

Quick Start Guide

HouseLinc™ - INSTEON® Software with Dual-Band Interface

Model: 2413UH, 2413SH

Introduction

HouseLinc is the ultimate INSTEON management software. From simple setup through complex scene creation and advanced automation, HouseLinc has you—and your entire home—covered.


System Requirements

Windows 2000/XP/7/Vista (32/64 bit); 15MB disk space; min. 128MB RAM; USB port (2413UH) or serial port (2413SH)

What's Included

- HouseLinc-enabled dual-band interface
- 6' USB cable (2413UH) or 6' DB9 serial cable (2413SH)
- FilterLinc powerline noise and attenuation filter

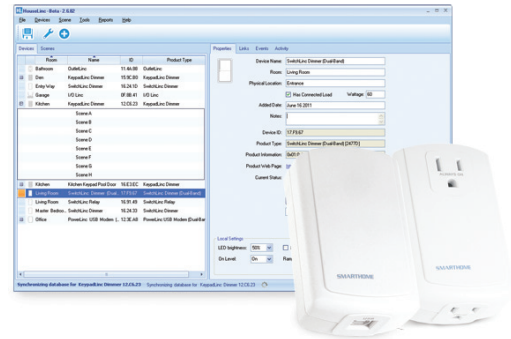
Installation

- 1) Shut down PC and related components that share a power strip (monitor, printer, fax, scanner, etc.)
- 2) Unplug power strip from wall and plug into the bottom outlet on FilterLinc
- 3) Plug FilterLinc directly into an unswitched wall outlet
- 4) Plug PLM into the pass-through outlet on the back of FilterLinc
- 5) Turn on PC
- 6) Open browser and go to www.smarthome.com/HL
- 7) Click DOWNLOAD button and follow onscreen instructions. (**Note:** do not launch HouseLinc yet.)
- 8) Connect cable to PLM and to PC
- 9) Launch HouseLinc
- 10) HouseLinc will automatically start looking for the PLM
- 11) Click on your PLM and click the Activate button
- 12) Select the Devices tab, click on the Add New Device Icon: 
- 13) Press and hold Set buttons on your INSTEON devices
- 14) Create Scenes
- 15) Create Events
- 16) Have fun!

Owner's Manual and Tech Support

Owner's Manual and current Quick Start Guide: <http://www.insteon.com/support>

Call: INSTEON Support Line at 800-762-7845



HouseLinc GUI, PLM and free FilterLinc

This device complies with FCC Rules and Industry Canada license-exempt RSS standard(s). Operation is subject to the following two conditions: (1) this device may not cause harmful interference, and (2) this device must accept any interference, including interference that may cause undesired operation of the device.

Le présent appareil est conforme aux CNR d'Industrie Canada applicables aux appareils radio exempts de licence. L'exploitation est autorisée aux deux conditions suivantes: (1) l'appareil ne doit pas produire de brouillage, et (2) l'utilisateur de l'appareil doit accepter tout brouillage radioélectrique subi, même si le brouillage est susceptible d'en compromettre le fonctionnement.