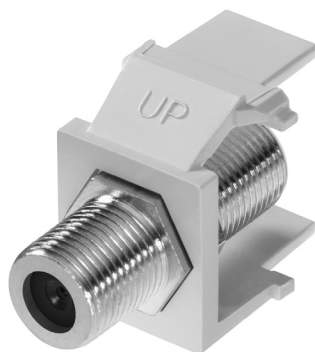


QuickPort® F-Type Adapters

APPLICATION

Nickel or gold-plated female-to-female connector features screw-on front and rear connections. Pass through design applications: TV, VCR, DVD, satellite, and home theater. Cable: coaxial cable terminated with "F" plugs. QuickPort F-Type Adapters snap into any QuickPort housing, including flush and surface mount outlets, Multimedia Outlet System (with adapter), Decora® Inserts, patch panels, and patch blocks.



SPECIFICATION

The modules for coaxial cable shall be individual QuickPort snap-in style female-to-female bulkhead adapters, and shall fit all other installed telecommunications wallplates, outlets and field-configurable patch panels and patch blocks. Bulkhead modules shall be available in multiple colors to match the housings or provide unique color-coding for port I.D. Modules shall be UL listed. All plastics used in construction of the module bodies shall be fire-retardant with a UL flammability rating of 94V-0.

FEATURES

- Female-female adapter for quick screw-on connections
- 360 degree gold plated seizing pin provides clearest signal transmission
- Works with all F-connectors and coax varieties

DESIGN CONSIDERATIONS

- F-type connector works for all coax applications
- QuickPort bulkhead modules snap into any QuickPort housing, including flush and surface mount outlets, Multimedia Outlet System (with adapter), patch panel, and patch blocks
- Check clearance behind proposed location of bulkhead module, to ensure space for proper bend-radius

STANDARDS COMPLIANCE

Meets or exceeds all applicable standards
Bulkhead Modules are cULus Listed
Society of Cable Telecommunications Engineers (SCTE) Compliant

PHYSICAL SPECIFICATIONS

Dimensions: .64"h x .58"w x 1.24"d
Materials: Zinc die cast body with machined threads
Insulation: Polypropylene

WARRANTY INFORMATION

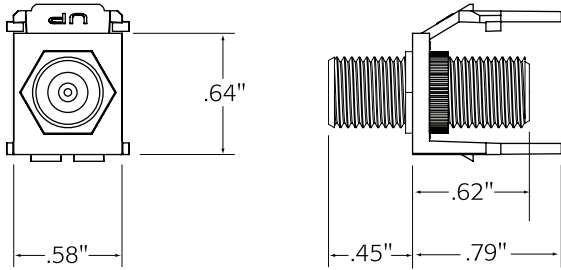
For a copy of Leviton product warranties, visit www.leviton.com.

PERFORMANCE SPECIFICATIONS

| | |
|--------------------|--|
| Frequency Range | DC - 1.0 GHz (Nickel) DC - 2.5 GHz (Gold) |
| Insertion Loss | ≤ 0.1 dB @ 1.0 GHz (Nickel) ≤ 0.2 dB @ 2.5 GHz (Gold) |
| Return Loss | ≥ 30 dB @ 1.0 GHz (Nickel) ≥ 26 dB @ 2.5 GHz (Gold) |
| Contact Resistance | < 4 Milliohms |
| Holding Force | > 160 Grams Initial > 120 Grams after Insertion |

ELECTRONIC FILES

For CAD files, Typical specs, or Dimensional Line Art. (.DXF, .DWG, MS-DOS.eps or .TXT), visit www.leviton.com.



41084-FxF 40831-0Bx

PART NUMBERS

| Description | Part No. |
|-------------------------------|-----------|
| F-Type Adapter, Nickel Plated | 41084-FxF |
| F-Type Adapter, Gold Plated | 40831-0Bx |

41084-FxF Color Choices: Ivory (I), White (W), Almond (A), Grey (G), Black (E), Light Almond (T)
40831-0Bx Color Choices: Ivory (I), White (W), Almond (A), Light Almond (T)

