



Ver. 1.0

## Quick Installation Guide

### Golden 150 Wireless Mini USB Adapter

Model # AWLL5077



#### Package Contents:

- Golden 150 Wireless Mini USB Adapter
- Driver & Utility CD
- Quick Installation Guide

## Section 1

### Install the Wireless USB Adapter

This Quick Installation Guide only provides the basic installation instructions. For detailed instructions of other advanced features, please refer to the User's Manual that can be found on the provided CD.

For Macintosh users, you can find the software and installation instructions for MAC 10.4, 10.5 under the **MAC** folder on the provided CD.

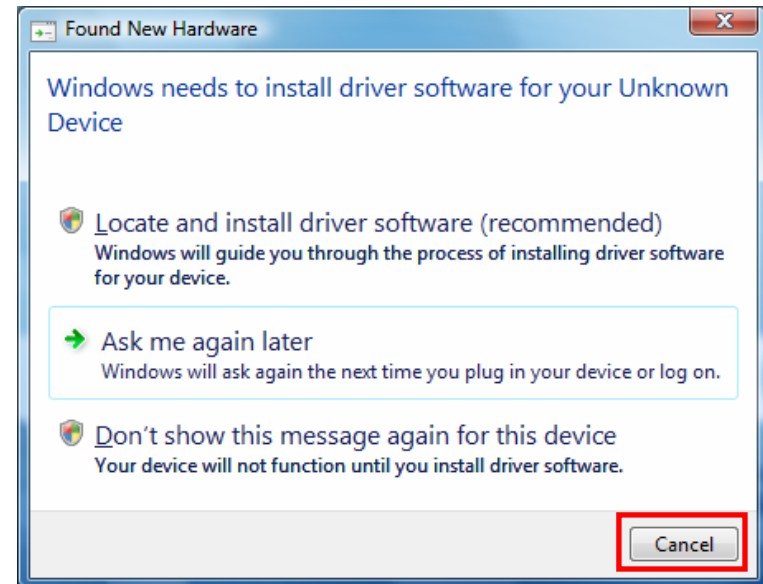
**Step 1.1** Insert the USB adapter into an available USB port of your computer.

**Step 1.2** Click **Cancel** when you see the **Found New Hardware Wizard**.

#### Windows XP/2000 Users:



#### Windows Vista Users:



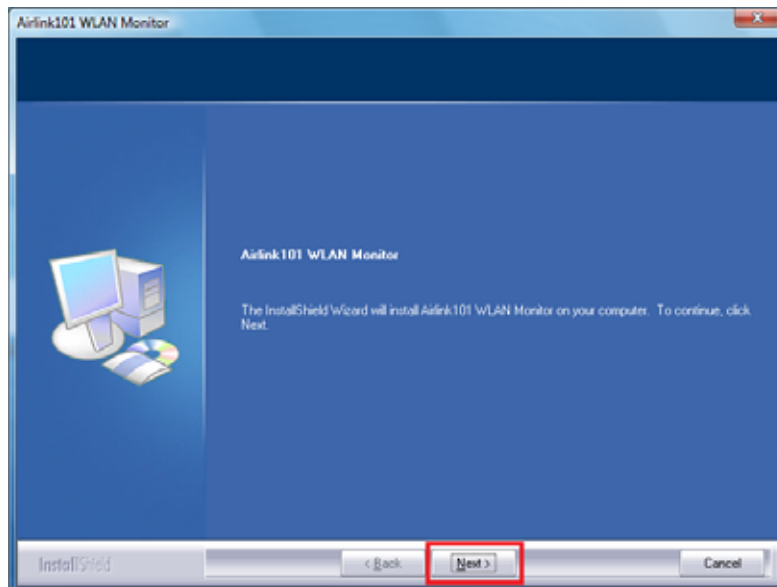
**Step 1.3** Insert the Installation CD in the CD drive. The Autorun screen will pop up. Select **Install Utility and Driver** from the menu.



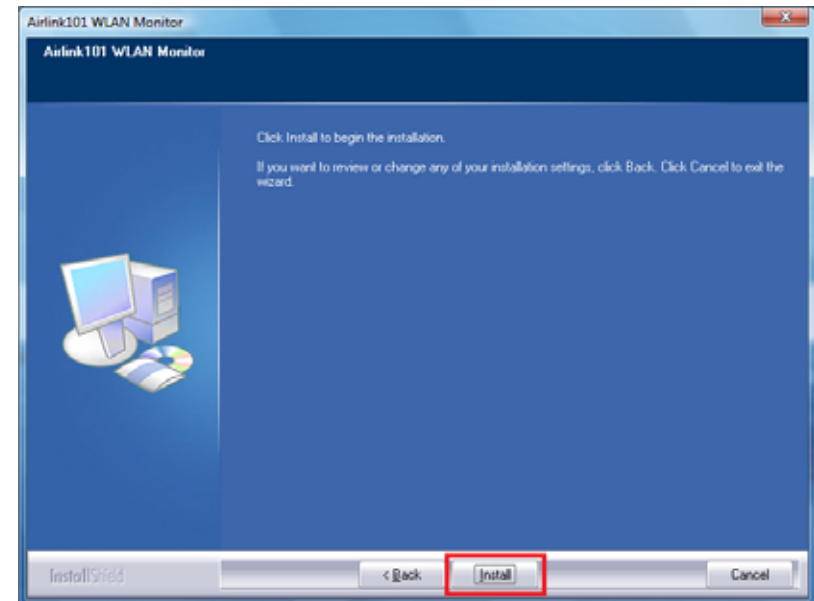
**Note:** If the Autorun screen doesn't appear automatically, go to **Start, Run,** and type **D:\Utility\Setup.exe** (where **D** is the letter of your CD drive) and click **OK**.

**Windows Vista Users:** When you get warning message(s), make sure that you **give permission** to continue with the installation of the driver software.

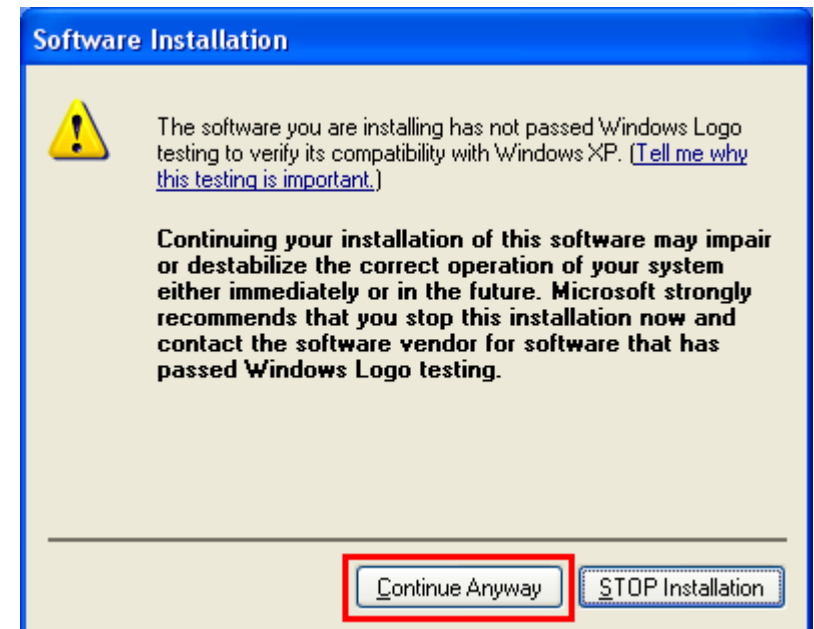
**Step 1.4** The Airlink101 WLAN Monitor screen will popup. Click **Next** at the screen.



**Step 1.5** Click **Install** to start the installation.

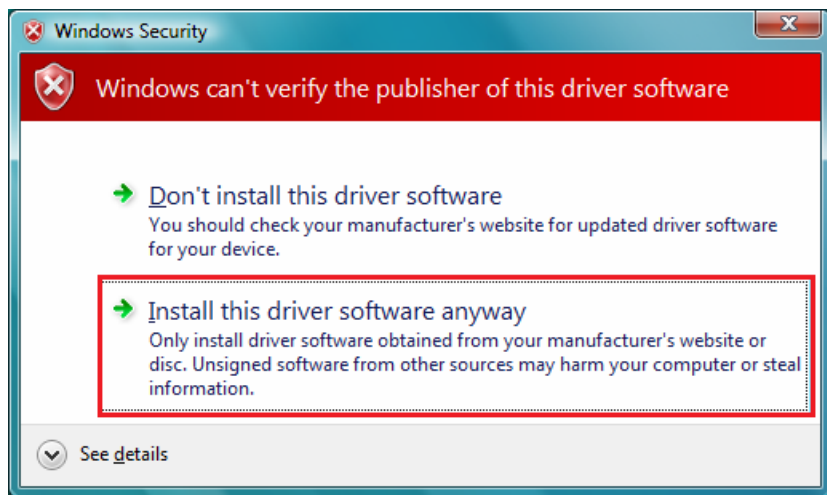


**Step 1.6** For Windows XP, click on **Continue Anyway**.

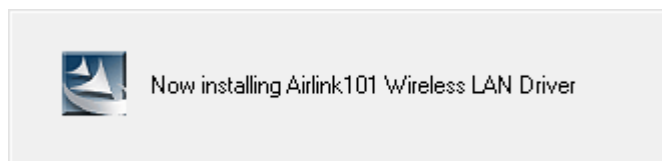




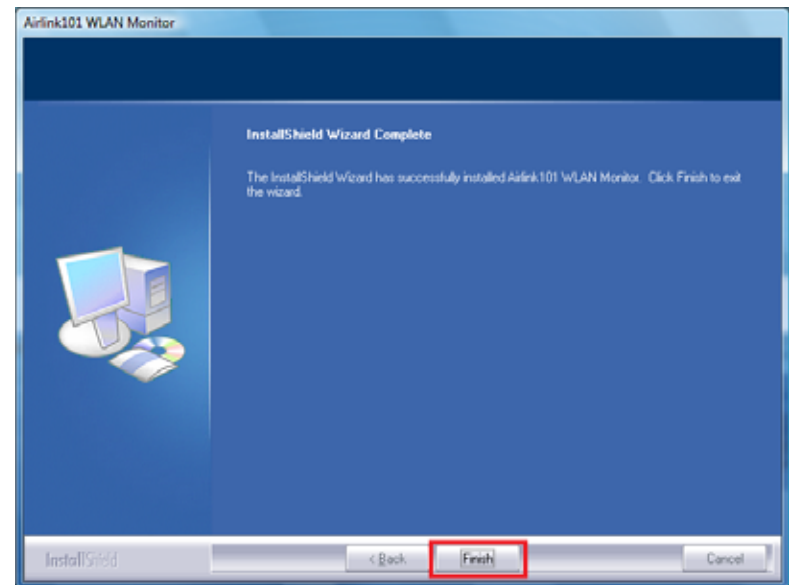
For Windows Vista: click on **Install this driver software anyway**.



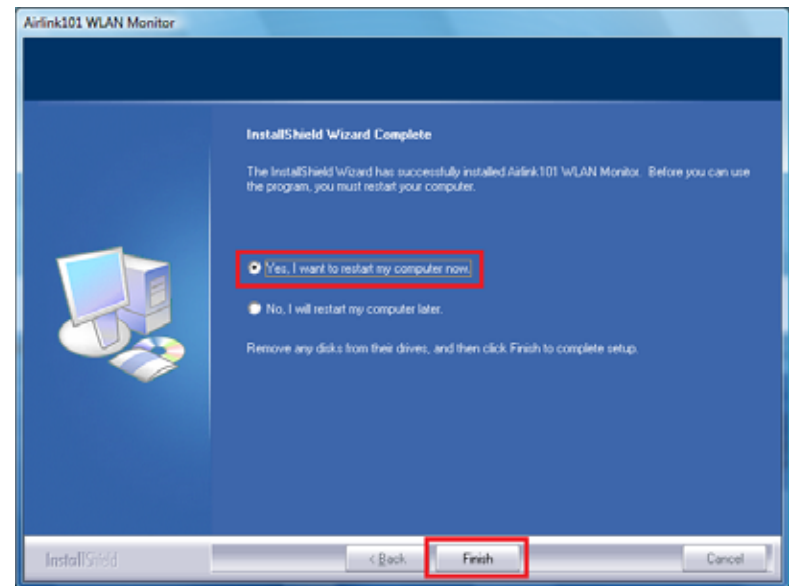
Please wait when Windows is installing the driver for Airlink101 Wireless Adapter and the utility, Airlink101 Wireless Monitor.



**Step 1.7** Click **Finish** to complete the installation.



**Step 1.8** Select **Yes, I will restart my computer now**. Click **Finish** to complete the installation.



The driver and utility have been installed. Please continue to Section 2.

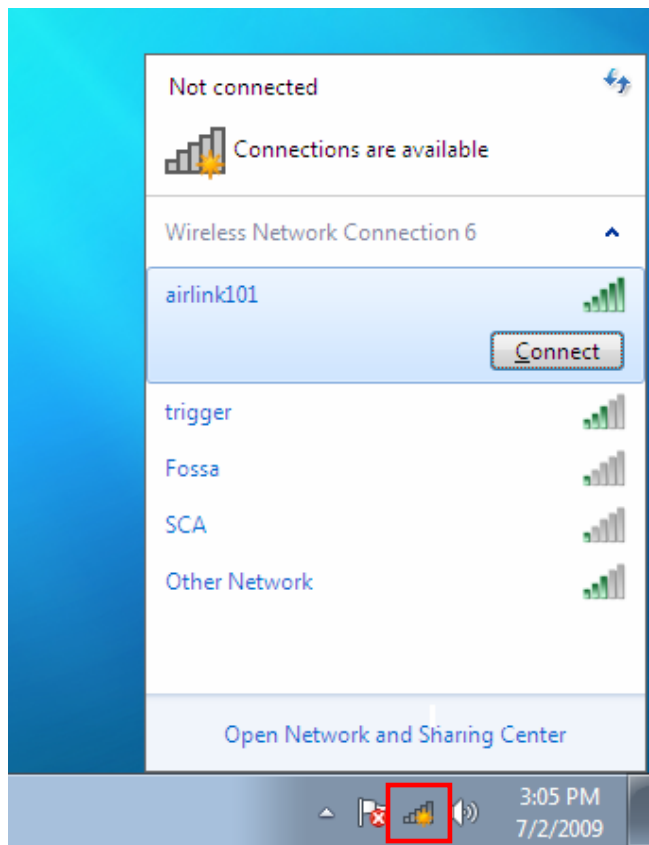
## Section 2

### Connect to Wireless Network

#### For Windows 7 Users:

You will need to use the utility built in Windows 7 to manage this wireless USB adapter. Currently, Airlink101 Wireless Monitor does not support Windows 7.

**Step 2.1** Click on the wireless icon in the system tray at the bottom right-hand corner of your screen. A list of available network will pop up. Select the one you want to connect to and click **Connect**.

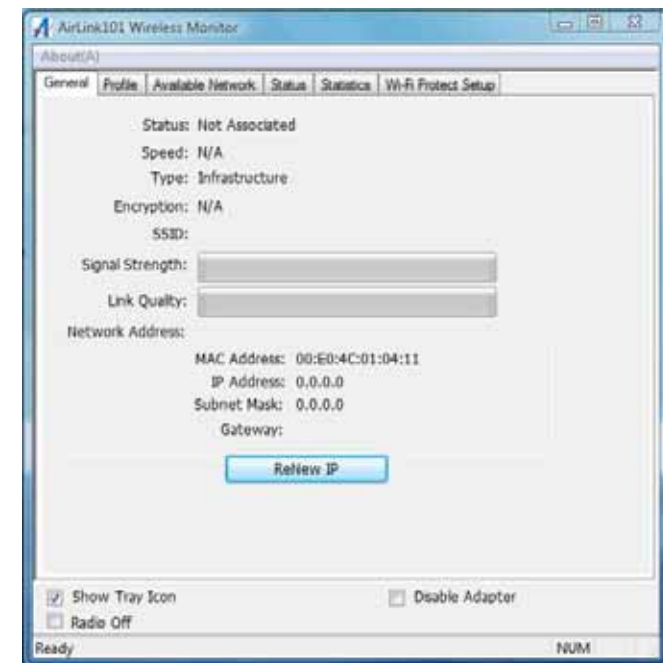


**Step 2.2** Enter the network security key if the wireless network you are attempting to connect to has wireless encryption enabled. Click **OK**. The connection should be now established.



#### For Windows Vista/XP/2000 Users:

**Step 2.1** Open the Airlink101 Wireless Monitor utility by double clicking on the icon in the system tray at the bottom right-hand corner of your screen.

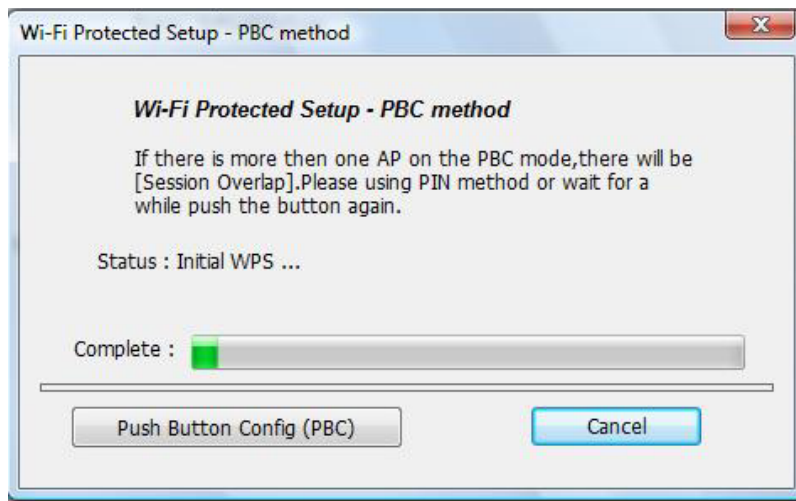


## Step 2.2

The Easy Setup Button (Wi-Fi Protected Setup) is a new and easy way to configure the encryption for your wireless network clients. In order to use it, you need to have a router that supports this feature.

**Note:** If your router doesn't support Easy Setup Button function (Wi-Fi Protected Setup), please go to **Step 2.3**.

1. Push the Easy Setup Button of the Adapter until you see the following window pops up on the monitor.



This window pops up to acknowledge you the wireless adapter is starting to establish a connection.

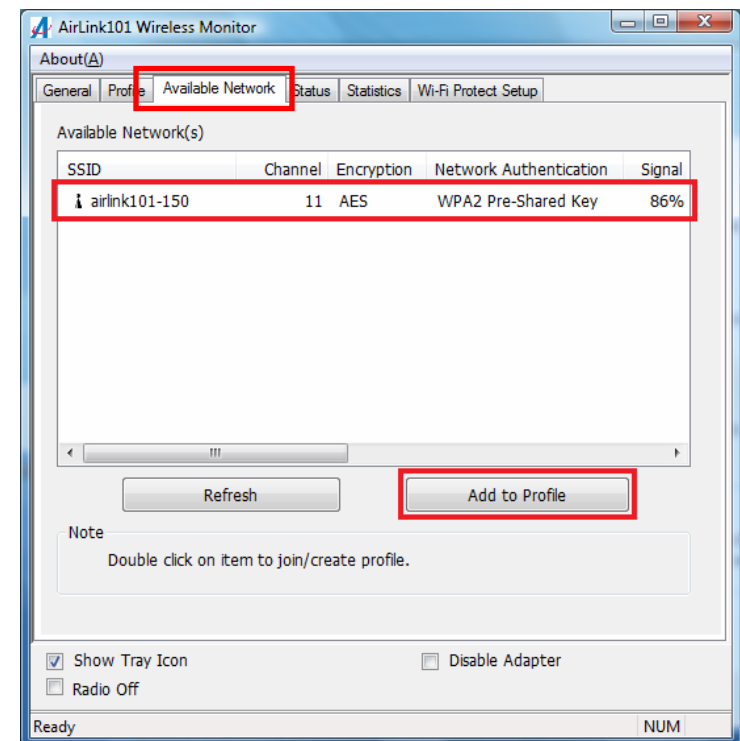
2. Within the following 2 minutes, push the Easy Setup Button (WPS Button) on the back of the Router. The picture shows Airlink101 AR570W Wireless 150 Router.



3. The router will now start to synchronize the encryption settings with the wireless adapter. The connection will be established in few seconds. Continue to Step 2.5.

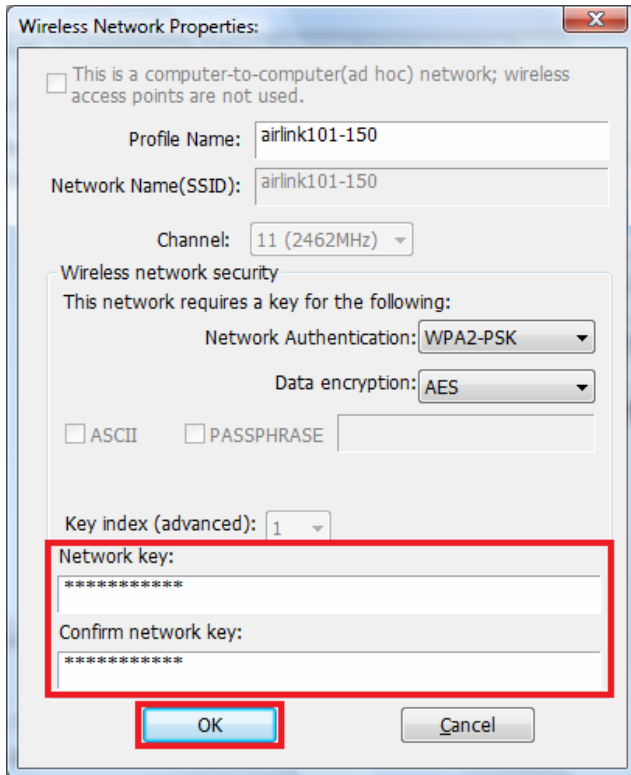
If the connection is unable to establish, continue to Step 2.3.

**Step 2.3** Click the **Available Network** tab of the Wireless Monitor, select the wireless network that you wish to connect to, and click **Add to Profile**.



If the network that you are attempting to connect does not have encryption enabled, you will receive a warning about connecting to an unsecured network. Click **OK** to complete the connection. Go to **Step 2.5**.

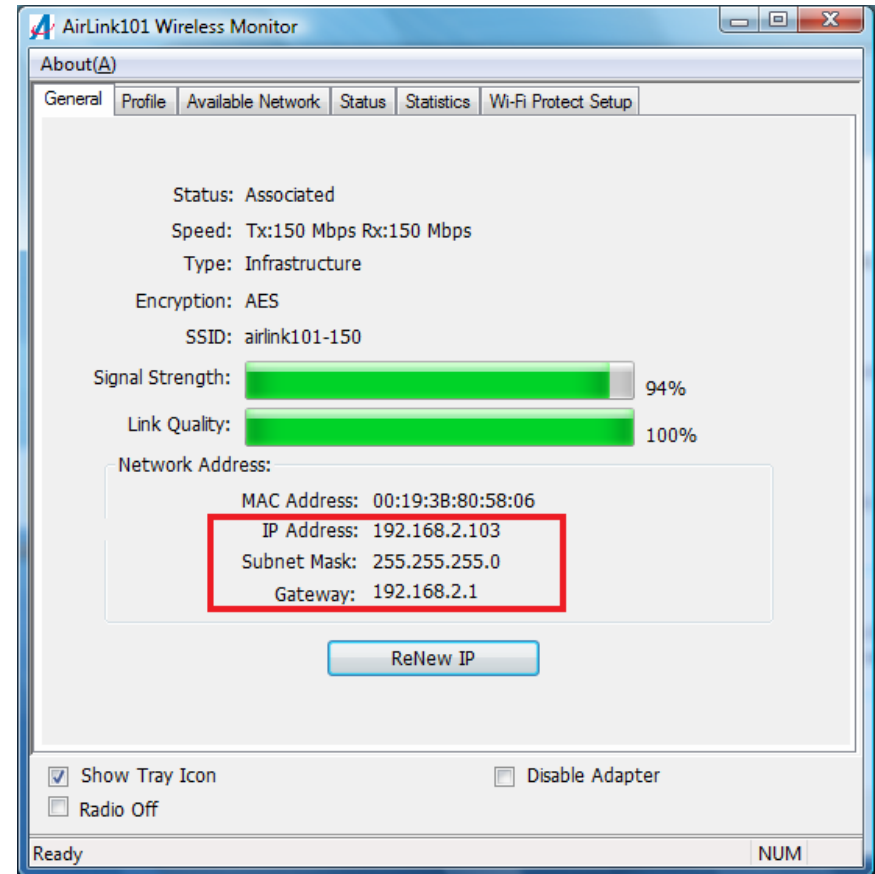
**Step 2.4** Enter the wireless security key into the **Network Key** and **Confirm Network Key** boxes. Click **OK**.



The 'Wireless Network Properties' dialog box is shown. It has a tabbed interface with 'General' selected. The 'Profile Name' is 'airlink101-150' and the 'Network Name (SSID)' is 'airlink101-150'. The 'Channel' is set to '11 (2462MHz)'. Under 'Wireless network security', it says 'This network requires a key for the following:'. 'Network Authentication' is set to 'WPA2-PSK' and 'Data encryption' is set to 'AES'. There are checkboxes for 'ASCII' and 'PASSPHRASE'. The 'Key index (advanced)' is set to '1'. The 'Network key' and 'Confirm network key' fields are highlighted with a red box, and the 'OK' button is also highlighted with a red box.

The wireless adapter will automatically detect the type of Network Authentication and the Data encryption. All you need to do is to enter the Network Key in the appropriate boxes according to the settings of the wireless router and click **OK** to connect.

**Step 2.5** The connection should be now established. Under the utility Airlink101 Wireless Monitor, go to General tab to check the status of the connection. Verify that **IP Address**, **Subnet Mask** and **Gateway** have valid numbers assigned to them (instead of all 0's). The Status should be Associated, and there should be green bars next to Signal Strength and Link Quality.



The 'AirLink101 Wireless Monitor' window is shown. It has a tabbed interface with 'General' selected. The 'Status' is 'Associated'. The 'Speed' is 'Tx:150 Mbps Rx:150 Mbps'. The 'Type' is 'Infrastructure'. The 'Encryption' is 'AES'. The 'SSID' is 'airlink101-150'. The 'Signal Strength' is 94% and the 'Link Quality' is 100%. The 'Network Address' section shows the 'MAC Address' as '00:19:3B:80:58:06', the 'IP Address' as '192.168.2.103', the 'Subnet Mask' as '255.255.255.0', and the 'Gateway' as '192.168.2.1'. The 'IP Address', 'Subnet Mask', and 'Gateway' fields are highlighted with a red box. There is a 'ReNew IP' button. At the bottom, there are checkboxes for 'Show Tray Icon' (checked), 'Radio Off' (unchecked), and 'Disable Adapter' (unchecked). The status bar shows 'Ready' and 'NUM'.

**Congratulations! You have now connected to the wireless network successfully.**



## Troubleshooting

1. If you cannot open the wireless monitor utility, make sure that the USB adapter is inserted firmly into the USB port.
2. If you cannot connect to the wireless router, you may want to double check the wireless security settings on the router. The network key you entered in Step 2.4 must match with the settings on the wireless router.
3. If you are experiencing problems with the connection such as low signal strength, slow connection speed, or unstable wireless connection, you can try to tune your router's signal by changing the channels on the router and/or by adjusting the direction of the antenna(s). You do not need to change the channel on the Adapter; it will automatically pick up the new channel after you reboot the router. Your router has 11 different channels to choose from. Keep going through the channels until you find one that gives you a stable connection. For instructions on changing channels, refer to the documentation that comes with the router.

## Section 3

### Technical Support

E-mail: [support@airlink101.com](mailto:support@airlink101.com)

Toll Free: 1-888-746-3238

Website: [www.airlink101.com](http://www.airlink101.com)

\*Theoretical maximum wireless signal rate derived from IEEE standard 802.11g and draft 802.11n specifications. Actual data throughput will vary. Network conditions and environmental factors, including volume of network traffic, building materials and construction, mix of wireless products used, radio frequency interference (e.g., cordless telephones and microwaves) as well as network overhead lower actual data throughput rate. This product is based on IEEE draft 802.11n specification and is not guaranteed to be compatible with future versions of IEEE 802.11n specification. Compatibility with draft 802.11n devices from other manufactures is not guaranteed. Specifications are subject to change without notice. Photo of product may not reflect actual content. All products and trademarks are the property of their respective owners. Copyright ©2009 Airlink101®