

FMW43PR1

Mini-Dock

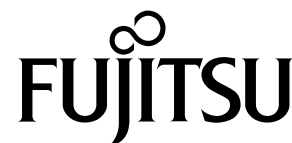
User's Guide

Stylistic LT Series

This mini-dock is designed to extend the connectivity of your pen tablet by providing a number of ports that are not available on the system. Refer to Figures 1, 2, and 3 for port locations. The mini-dock can also be used as a charging dock for periods when the pen tablet is not being used.

This mini-dock provides the following interfaces:

- **PS/2-style Mouse Port**
Used for connecting a mouse with a PS/2-style connector.
- **AC Adapter Port**
Used for connecting the AC adapter to supply power to the system.
- **Parallel Port**
Ordinarily used for connecting a printer.
- **Serial Port**
Used for connecting a serial device.



- **Video Port**
Used for connecting a video monitor for displaying the contents of the pen tablet screen.
 - **Floppy Disk Drive Port**
Used for connecting the optional floppy disk drive (FMWFD2).
 - **PS/2-style Keyboard Port**
Used for connecting a keyboard with a PS/2-style connector.
 - **LAN Port**
Used for connecting the pen tablet's optional internal LAN module to a LAN hub.
- Note:** The mini-dock is required in order to use the internal LAN module; there is no LAN port on the pen tablet.
- **USB Port**
Used for connecting Universal Serial Bus-compliant devices.

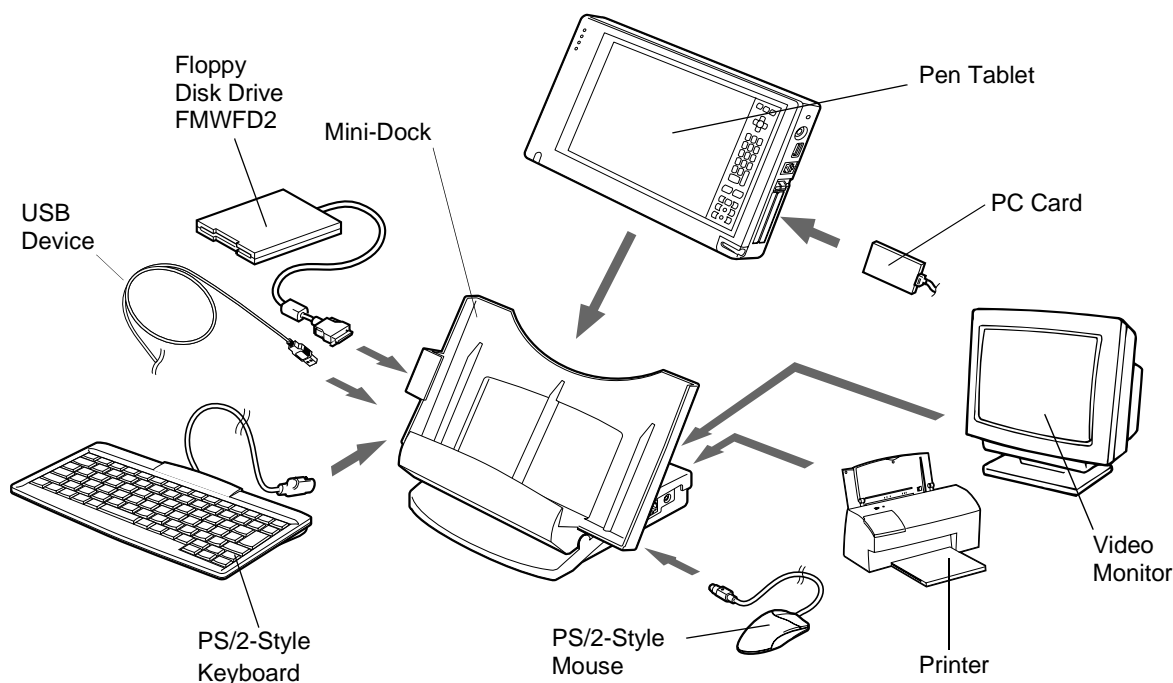


Figure 1. Mini-Dock peripheral Interfaces

The viewing angle of the mini-dock can be adjusted to four different positions. The bottom of the support bail on the rear of the support platform (see Figure 3). snaps into one of four slots. When storing the mini-dock, flip the bail up against the back of the support platform to allow the platform to lie flat.

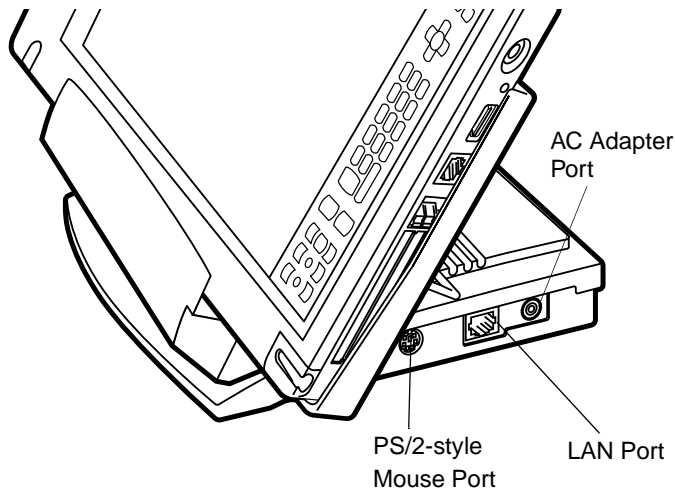


Figure 2. Right Side of Mini-Dock

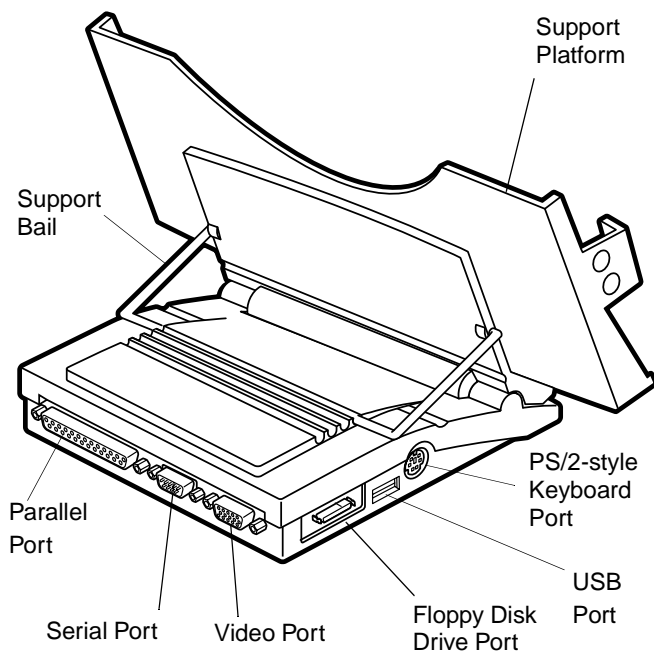


Figure 3. Rear and Left-Side of Mini-Dock

Installing the System into the Mini-Dock

Cautions

- Dropping conductive material onto the charging contacts could result in internal damage to the pen tablet circuitry.
- Prior to installing your pen tablet into the mini-dock, be sure to power down your system first. Failure to do so could result in damage to the system or the mini-dock.

1. Shut down the system by selecting Start> Shut Down> Shut Down.
2. Position the pen tablet against the positioning guide and the back of the mini-dock.
3. Slide the pen tablet into the tray at the bottom of the mini-dock and press it down firmly until it is seated, as shown in Figure 4. The alignment guide in the bottom of the tray ensures that the system is properly seated over the connector.
4. Re-start your system.

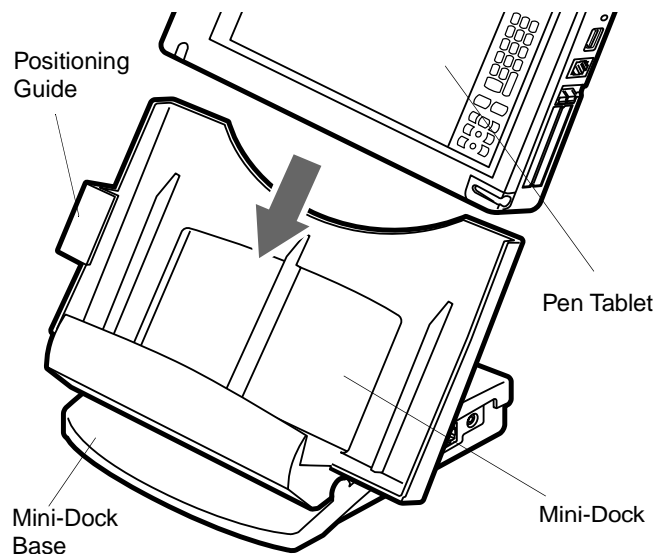


Figure 4. Installing the System in the Mini-Dock

Removing the System from the Mini-Dock

1. Shut down the system by selecting Start> Shut Down> Shut Down.
2. While holding the base of the mini-dock with one hand, grasp the pen tablet at the top and firmly pull it straight up from the base.
3. Restart your system.