

# FMWSP8

## Screen Protector

### Installation Instructions

#### Stylistic LT

The FMWSP8 screen protector can be installed on the Stylistic LT pen tablet display screen or on the display window of the FMWCC39 harsh environment case. Note the following:

- Before installing a new screen protector, remove any screen protector that is already installed. A notch in the corner of the screen protector allows you to slide your fingernail or a firm, pliable implement (such as a credit card) under the screen protector for removal. Do not use a metal implement; it could scratch the screen.
- To ensure good adhesion, clean the display screen with a soft cotton cloth dampened with denatured alcohol before installing the screen protector. When the alcohol dries, it may leave streaks on the screen. If streaking occurs, buff the screen gently with a clean, dry cloth to remove the streaks.

1. For installation on the **harsh environment case (HEC) only**: Remove edge from screen protector, as shown in Figure 1.

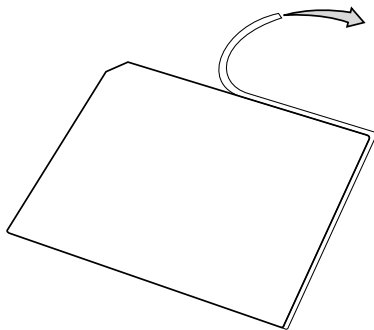


Figure 1. Removing Edge for HEC Installation

2. Peel the protective film from the adhesive side of the screen protector, as shown in Figure 2.

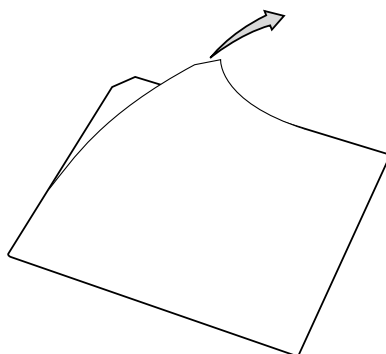


Figure 2. Peeling Protective Film

3. Install the screen protector on the pen tablet or harsh environment case. Apply the adhesive side to the screen with the notch in the lower left corner, as shown in Figure 3. **Apply pressure along the edges of the screen protector with your finger.** (Avoid lifting the screen protector from the screen after it is installed. The adhesive requires 48 hours to cure properly.)

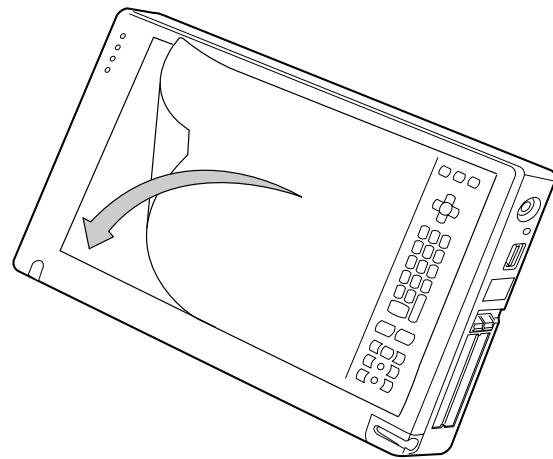


Figure 3. Installing the Screen Protector

4. Remove the protective film from the top of the screen protector, as shown in Figure 4.
5. Wipe the exposed surface of the screen protector with a clean dry cloth to remove any adhesive left behind by the protective film.

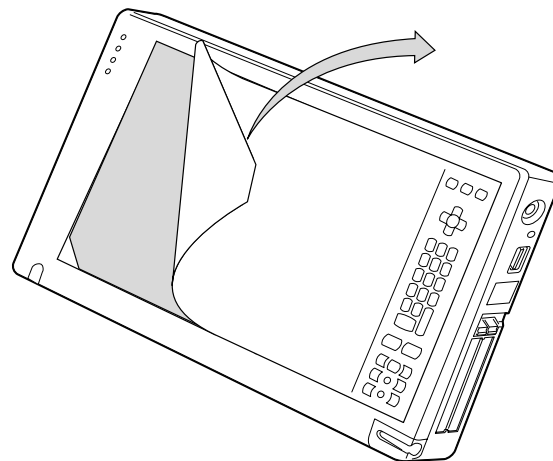


Figure 4. Removing the Protective Film