

# SMT Power Inductor

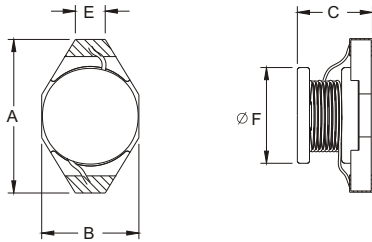
## SISN43 Type

### Features

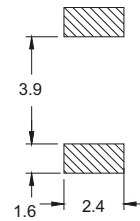
- RoHS compliant.
- Low profile (3.0mm max. height), SMD type.
- Unshielded, suitable for high density mounting.
- High energy storage and low DCR.
- Provided with embossed carrier tape packing.
- Ideal for power source circuits, DC-DC converter, DC-AC inverters inductor application.
- In addition to the standard versions shown here, customized inductors are available to meet your exact requirements.



### Mechanical Dimension:



### RECOMMENDED PAD PATTERNS



UNIT:mm/inch  
 A = 6.45±0.254 / 0.254±0.010  
 B = 4.00±0.254 / 0.157±0.010  
 C = 3.00 / 0.118Max.  
 D = 4.32 / 0.170 (TYP)  
 E = 1.23 / 0.048 (TYP)  
 F = 4.00±0.254 / 0.157±0.010

### Electrical Characteristics: 25°C: 100KHz, 0.1V

PART NO.	L <sup>1</sup> (μH)	DCR (Ω)MAX	Isat <sup>2</sup> (Amperes)
SISN43-1R0A	1.0	0.05	2.90
SISN43-1R5A	1.5	0.05	2.60
SISN43-2R2A	2.2	0.07	2.30
SISN43-3R3A	3.3	0.08	2.00
SISN43-4R7A	4.7	0.09	1.50
SISN43-6R8A	6.8	0.13	1.20
SISN43-100A	10.0	0.16	1.10
SISN43-150A	15.0	0.23	0.90
SISN43-220A	22.0	0.37	0.70
SISN43-330A	33.0	0.51	0.58
SISN43-470A	47.0	0.64	0.50
SISN43-680A	68.0	0.86	0.40
SISN43-101A	100.0	1.27	0.31
SISN43-151A	150.0	2.00	0.27
SISN43-221A	220.0	3.11	0.22
SISN43-331A	330.0	3.80	0.18
SISN43-471A	470.0	5.06	0.16
SISN43-681A	680.0	9.20	0.14
SISN43-102A	1000.0	13.80	0.10

1. Tolerance of inductance : ± 20%.
2. Isat is the DC current which cause the inductance drop less than 10% of its nominal inductance without current .
3. Operating temperature: -20°C to 105°C (including self-temperature rise).



DELTA ELECTRONICS, INC.

(TAOYUAN PLANT CPBG) 252, SAN YING ROAD, KUEISAN INDUSTRIAL ZONE, TAOYUAN SHIEN, 333, TAIWAN, R.O.C.

TEL: 886-3-3591968; FAX: 886-3-3591991

http://www.deltawww.com