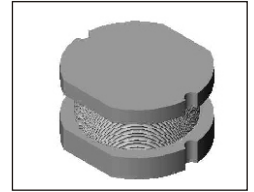


SMT Power Inductor

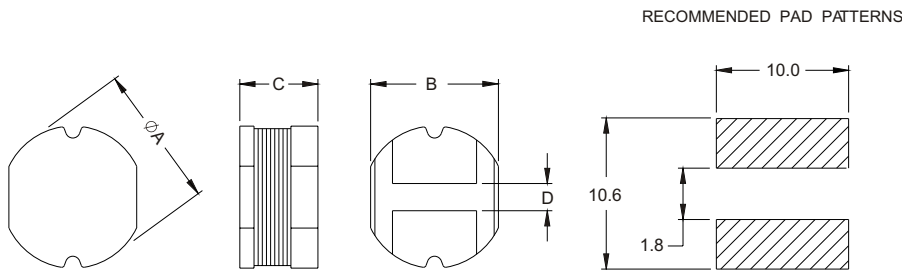
SI104 Type

Features

- RoHS compliant.
- Low profile (4.5mm max. height) SMD type.
- Unshielded.
- Self-leads, suitable for high density mounting.
- High energy storage and low DCR.
- Provided with embossed carrier tape packing.
- Ideal for power source circuits, DC-DC converter, DC-AC inverters inductor applications.
- In addition to the standard versions shown here, customized inductors are available to meet your exact requirements.



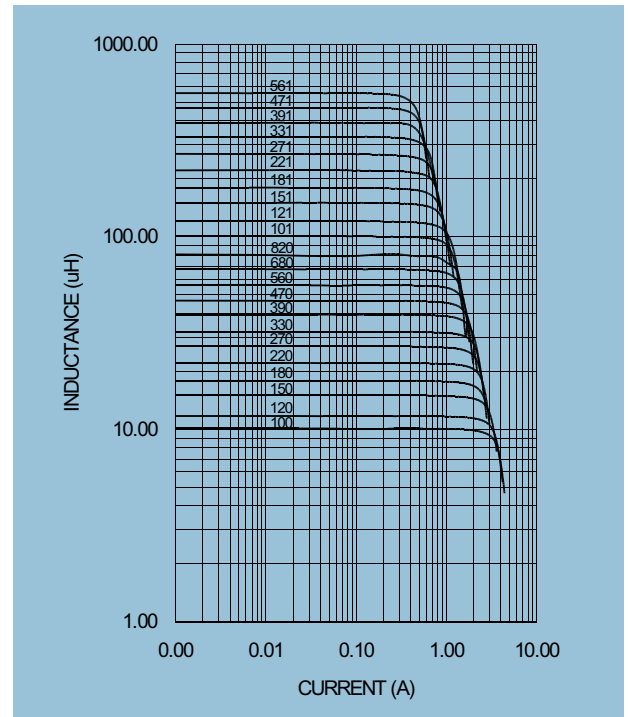
Mechanical Dimension:



UNIT:mm/inch
 A = 10.0 ± 0.4 / 0.394 ± 0.016
 B = 9.0 ± 0.2 / 0.354 ± 0.008
 C = 4.0 ± 0.5 / 0.157 ± 0.020
 D = 2.0 ± 0.2 / 0.079 ± 0.008

Electrical Characteristics: 25°C, 1KHz, 1V

PART NO.	L ¹ (μ H)	DCR (Ω) MAX	I _{rated} ² (A _{dc})
SI104 - 100	10	0.053	2.40
SI104 - 120	12	0.061	2.20
SI104 - 150	15	0.070	1.90
SI104 - 180	18	0.081	1.80
SI104 - 220	22	0.088	1.60
SI104 - 270	27	0.100	1.50
SI104 - 330	33	0.120	1.30
SI104 - 390	39	0.151	1.20
SI104 - 470	47	0.170	1.10
SI104 - 560	56	0.199	1.00
SI104 - 680	68	0.223	0.91
SI104 - 820	82	0.252	0.85
SI104 - 101	100	0.344	0.74
SI104 - 121	120	0.396	0.69
SI104 - 151	150	0.544	0.61
SI104 - 181	180	0.621	0.56
SI104 - 221	220	0.721	0.53
SI104 - 271	270	0.949	0.45
SI104 - 331	330	1.100	0.42
SI104 - 391	390	1.245	0.38
SI104 - 471	470	1.526	0.35
SI104 - 561	560	1.904	0.32



1. Tolerance of inductance : ± 10%.
2. I_{rated} is the DC current which cause the inductance drop less than 10% of its nominal inductance without current and the surface temperature of the part increase less than 45°C.
3. Operating temperature: -20°C to 105°C (including self-temperature rise).



DELTA ELECTRONICS, INC.

(TAOYUAN PLANT CPBG) 252, SAN YING ROAD, KUEISAN INDUSTRIAL ZONE, TAOYUAN SHIEN, 333, TAIWAN, R.O.C.

TEL: 886-3-3591968; FAX: 886-3-3591991

<http://www.deltawww.com>