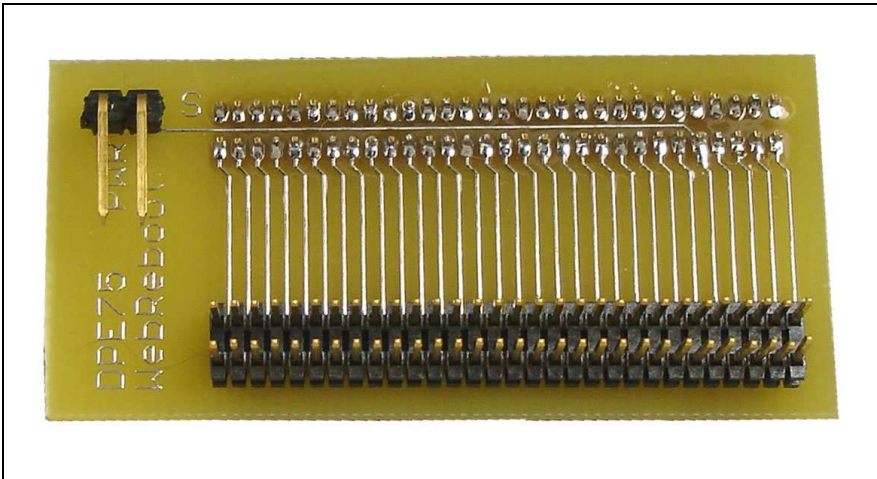




WebReboot™

Remote Reboot Without Pulling the Plug



Dell™ PowerEdge™ 750 Adapter Installation Guide

This adapter allows you to connect your WebReboot to the Dell™ PowerEdge™ 750 server, which does not contain standard power switch pins.

Part #: DPE750

WebReboot™

Dell™ PowerEdge™ 750 Adapter

Installation Guide

Copyright 2006. Servprise International, Inc. All rights reserved.

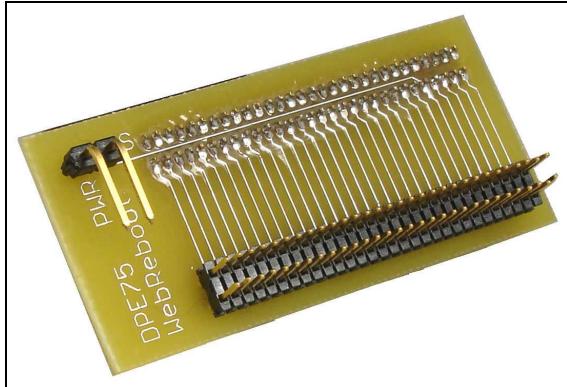
Dell™, PowerEdge™, and Dell PowerEdge™ are trademarks of Dell Inc.

Product Description

The Dell™ PowerEdge™ 750 Adapter allows you to connect your servers that don't contain power pins to the WebReboot. The adapter connects to the server's front panel board, and provides a connection for power switch pins.

This connector is known to work with the following Dell PowerEdge™ servers:

- PowerEdge 750



Caution: By installing and/or using the Dell™ PowerEdge™ 750 Adapter, you are accepting all risk of damage to yourself, your equipment, your data, and the WebReboot, and releasing Servprise International, Inc. and all of its personnel, agents, and officers of any and all liability. Failure to abide by static-safe practices and the maintenance instructions associated with your equipment significantly increases the chance of damage to your equipment. Check with your computer manufacturer before connecting the Dell™ PowerEdge™ 750 Adapter to your equipment to ensure you will not void the warranty on your equipment. Servprise International highly recommends having a trained computer repair technician perform all maintenance and upgrade work on computer equipment.

Customer Service

Online:

Additional information that may not be included in this guide can be found at <http://www.servprise.com>. Questions may be emailed to support@servprise.com.

Telephone:

1-800-832-3823 – United States

1-401-741-3295 – International

Mail:

Servprise International, Inc.
447 Rawson Street
Leicester, MA 01524
USA

Installation Preparation

1. Before proceeding with the installation, ground yourself with a suitable anti-static wrist strap to reduce the risk of damage to your equipment.
2. Open your server's chassis by following the maintenance instructions that came with your equipment.
3. You must first decide which type of WebReboot installation you would like to make with each server. Two options are available:
 - Installation using a PCI slot
 - Installation without using a PCI slot

An overview of each type of installation is provided on the following two pages.

Option 1 - Installation Using a PCI Slot (Recommended)

Servprise recommends using the External PCI Slot Cover Adapter to enable quick and easy connections at the rear of the server for the WebReboot. Of course, the drawback to this installation is that it requires an available PCI slot. To use this installation type, please continue to **Installation With PCI Slot** on page 6.

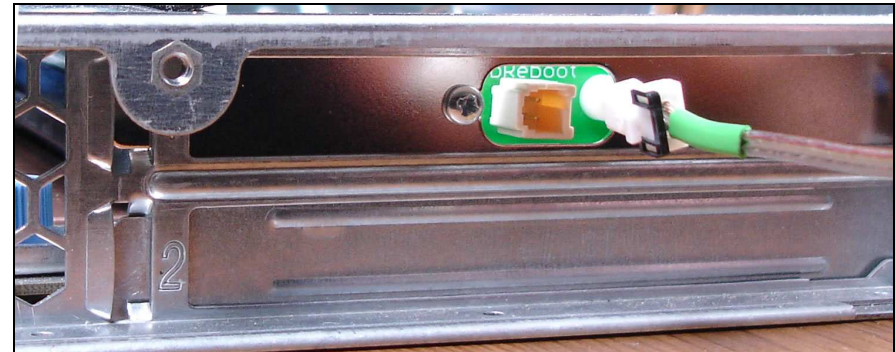


Figure 1 – Installation Using a PCI Slot (Recommended)

Option 2 - Installation Without Using a PCI Slot

The Direct Motherboard Cable can be used to connect the WebReboot to a server if no PCI slots are available. To use this installation type, please continue to **Installation Without PCI Slot** on page 8.

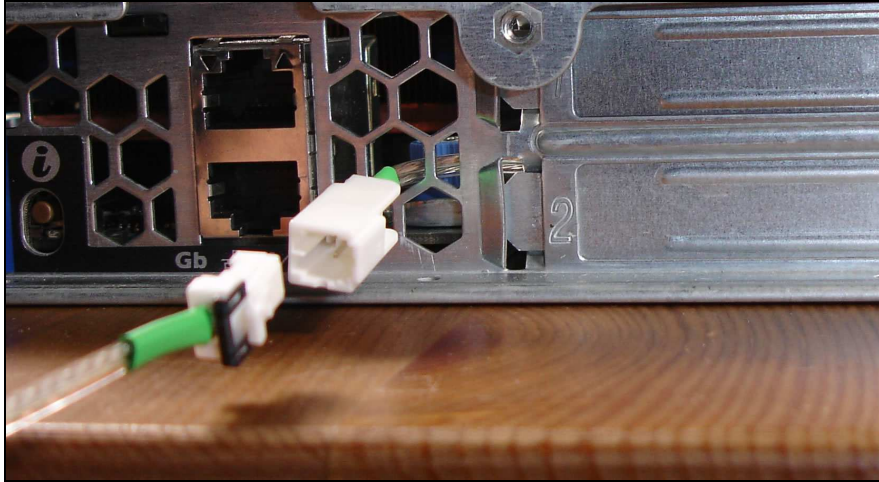


Figure 2 – Installation Without Using a PCI Slot

Installation With PCI Slot

1. This installation requires the following parts, as shown below in Figure 3:

- WebReboot Cable
- External PCI Slot Cover Adapter
- Motherboard Cable

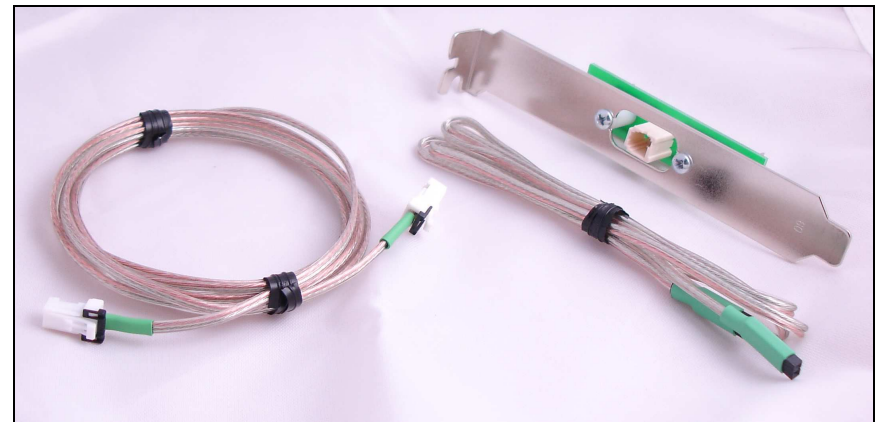


Figure 3 – Parts Required for PCI Slot Installation

2. First, install the External PCI Slot Cover Adapter in an available PCI slot in your server, as shown in Figure 4 and Figure 5.



Figure 4 – External View of PCI Slot Cover Adapter Installed

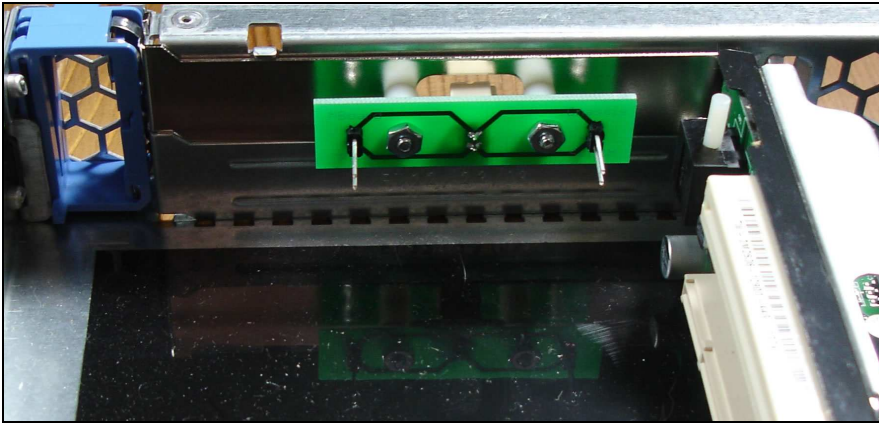


Figure 5 – Internal View of PCI Slot Cover Adapter

3. Connect one end of the Motherboard Cable to the *MBoard Pins* port on the External PCI Slot Cover Adapter, as shown in Figure 6.

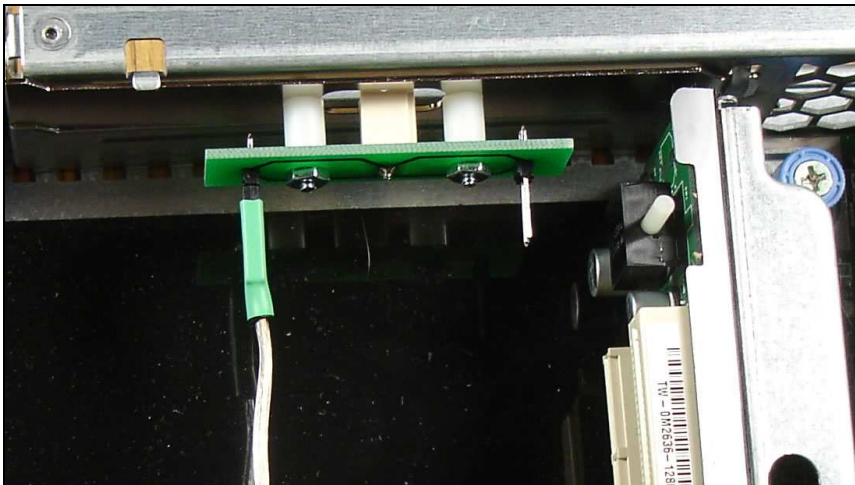


Figure 6 – Internal View of PCI Slot Cover Adapter with Motherboard Cable

4. Now that the External PCI Slot Cover Adapter installation is complete, you may continue installation of the Dell™ PowerEdge™ 750 Adapter on page 10.

Installation Without PCI Slot

1. This installation requires the following parts, as shown below in Figure 7:
 - WebReboot Cable
 - Direct Motherboard Cable

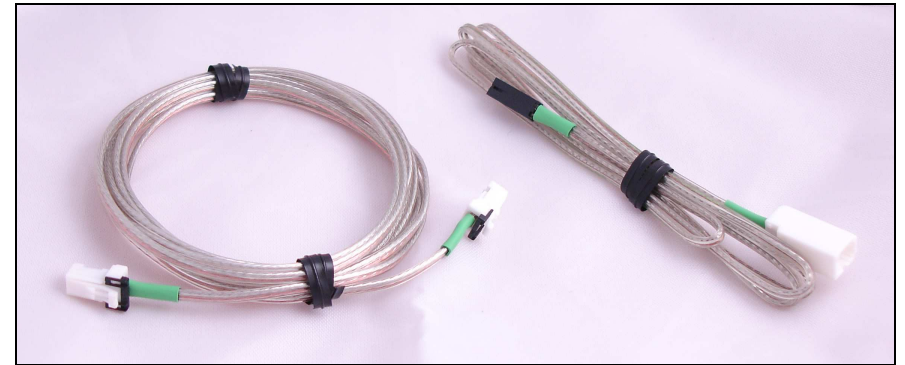


Figure 7 – Parts Required for Installation Without a PCI Slot

2. The Direct Motherboard Cable can be routed through any available location in the chassis.

3. To install the Direct Motherboard Cable, route the smaller black connector through one of the available holes, as shown in Figure 8.



Figure 8 – Installing the Direct Motherboard Cable

4. After carefully pulling the wire through (take caution to not twist the wire as you pull it and risk damaging the wire on the metal edges), neatly bend the wire as shown in Figure 9.

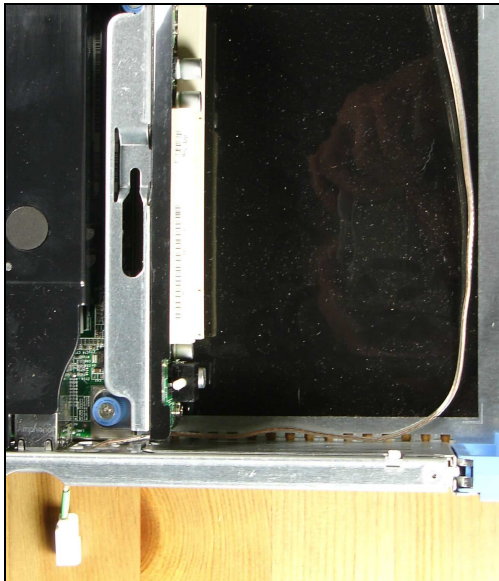


Figure 9 – Neatly Installed Direct Motherboard Cable (Top View)

5. Now that the Direct Motherboard Cable installation is complete, you may continue installation of the Dell™ PowerEdge™ 750 Adapter on page 10.

Installation

Continue this portion of the installation only after completing Installation With PCI Slot on page 6, OR Installation Without PCI Slot on page 8.

1. The other end of the Motherboard Cable will be routed through the server up to the front panel board. Pull sufficient cable through to reach the front panel board, highlighted in Figure 10.

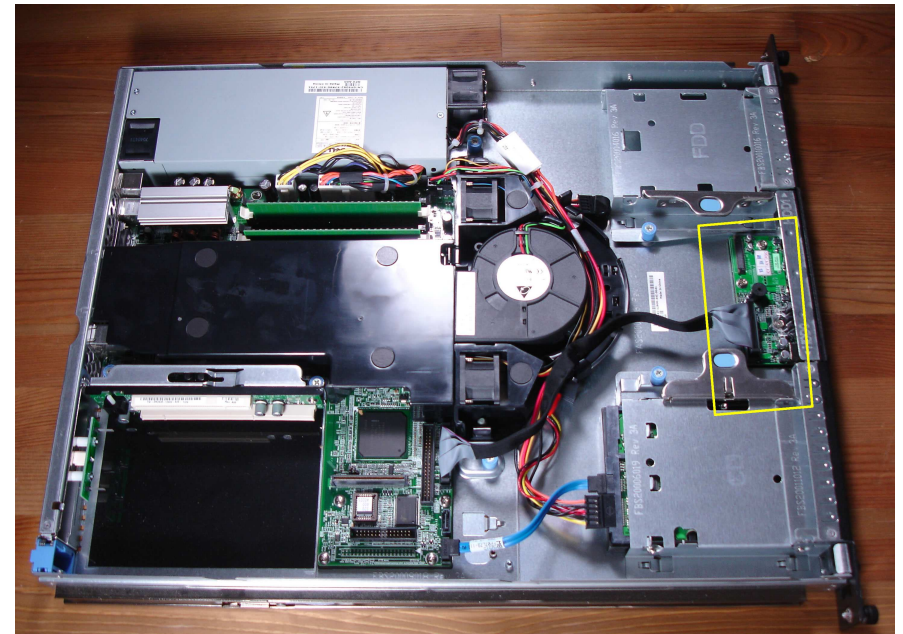


Figure 10 - Top View of PowerEdge 750 with Front Panel Board Highlighted

2. Remove the ribbon cable from the front panel board by gently pulling it.

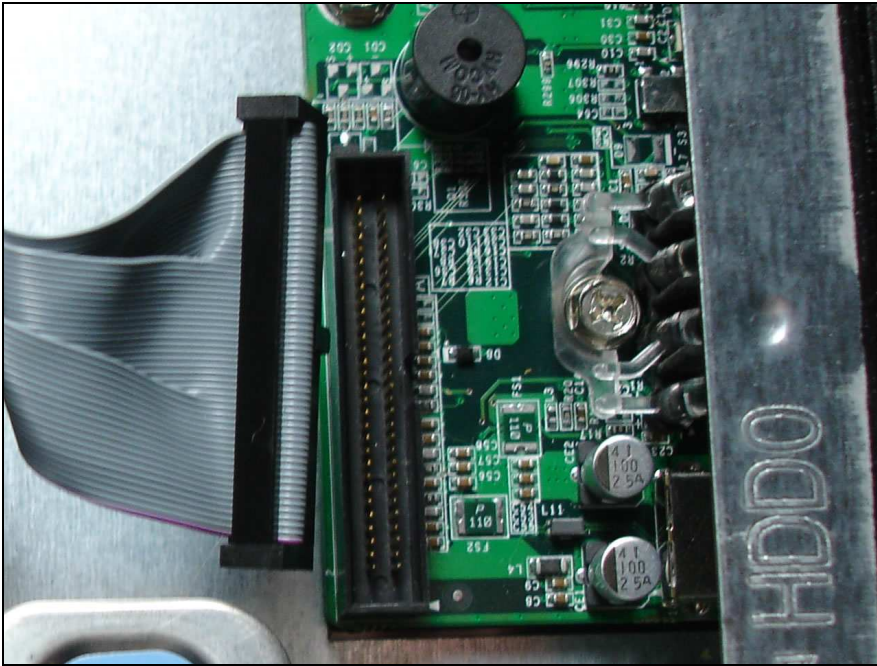


Figure 11 – Ribbon Cable Removed from Front Panel Board

3. Connect the ribbon cable to the Dell™ PowerEdge™ 750 Adapter as shown in Figure 12 and Figure 13. **Be very careful to properly align the pins when connecting the adapter to the ribbon cable and ensure that the notch on the ribbon cable is facing the proper direction as highlighted in Figure 13.**

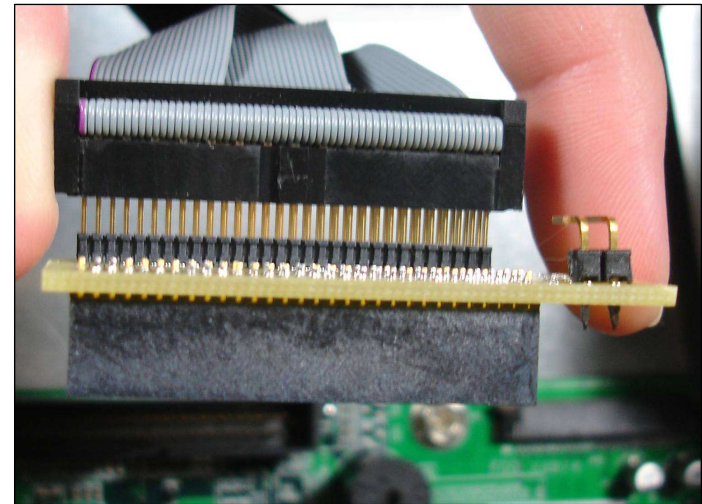


Figure 12 – Adapter Board Properly Aligned with Ribbon Cable

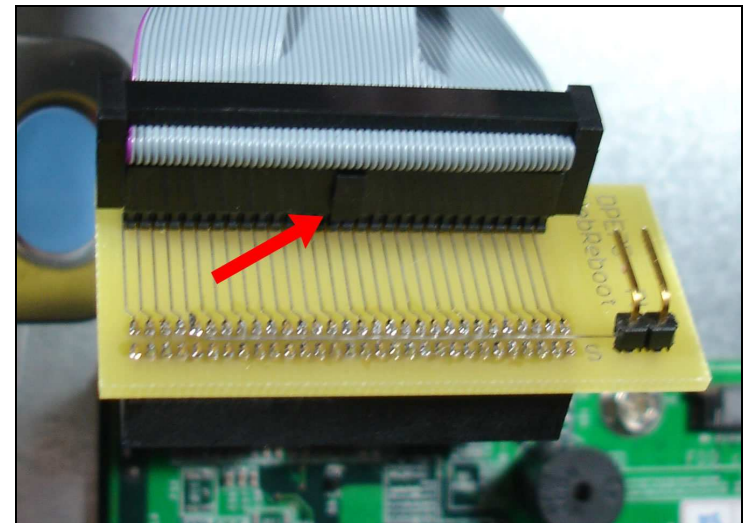


Figure 13 – Adapter Board Fully Connected to Ribbon Cable, Proper Configuration Highlighted

4. Attach the Motherboard Cable that was routed through the chassis to the *Power* port on the Dell™ PowerEdge™ 750 Adapter, as shown in Figure 14.

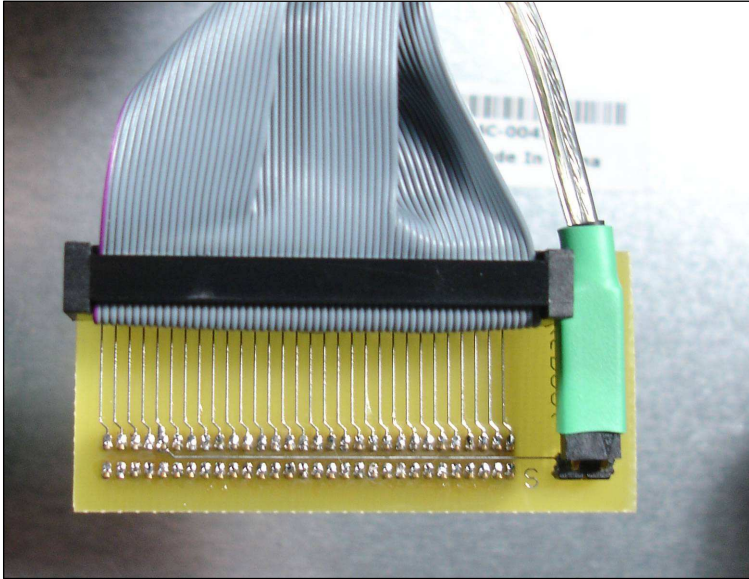


Figure 14 – Connecting the Motherboard Cable to the Adapter Board

5. Align the Dell™ PowerEdge™ 750 Adapter with the pins on the front panel connector,. **Be extremely careful to not misalign the pins.** Gently insert the board.
6. Your Dell™ PowerEdge™ 750 Adapter installation should resemble Figure 15.

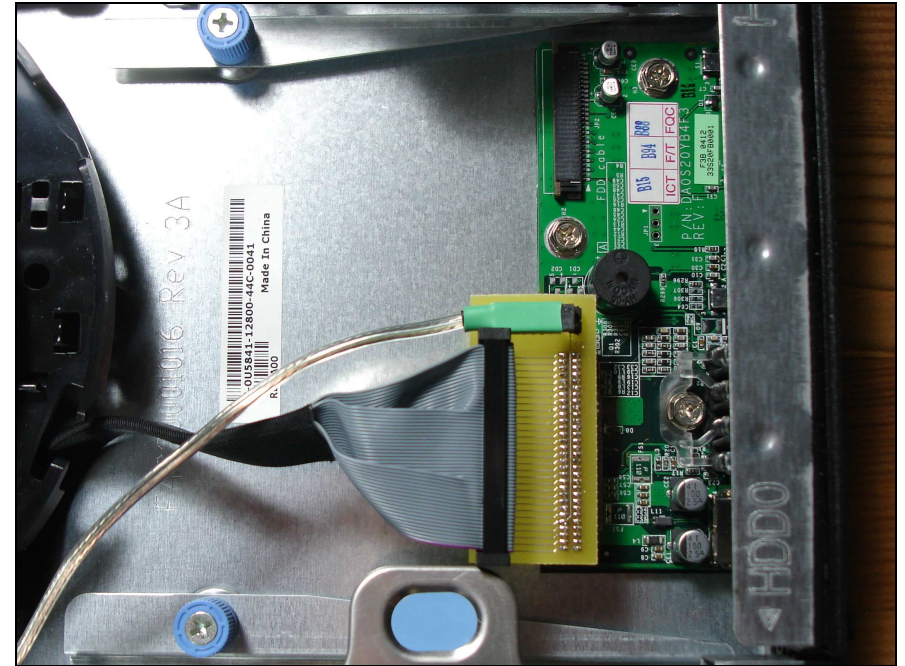


Figure 15 – Completed Adapter Board Installation Detail

7. Using a flashlight, ensure that the adapter has been properly connected to the front panel board by viewing the small space between the adapter's socket and the front panel board pins as highlighted in Figure 16. Also check the other side of the connector. In a proper install, there will be no unattached pins on either side.



Figure 16 - Ensuring that the Adapter Board is Properly Aligned with the Front Panel Board

8. If you have any surplus Motherboard Cable in the chassis, you may coil it to neaten the install, as shown Figure 17.

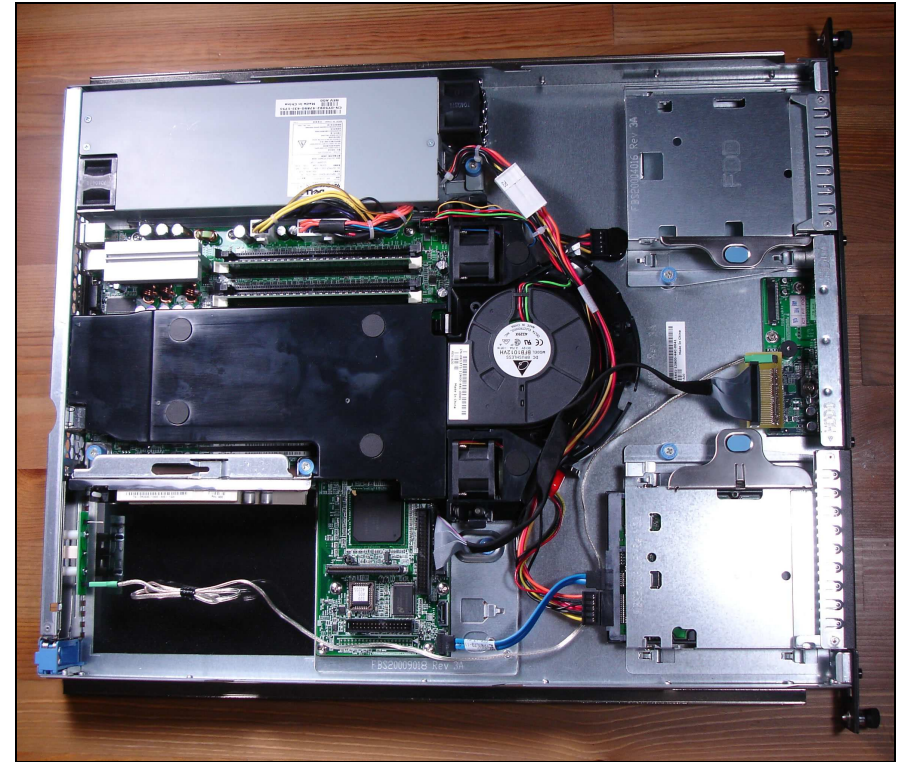


Figure 17 – Completed Adapter Board Installation

9. You may now close the lid to your server and reinsert it in your network rack.

Caution: When closing the lid, **MAKE SURE** the adapter and ribbon cable are safely **WITHIN CLEARANCE** of the lid. Failure to do so could cause the adapter and ribbon cable to become snagged on the closing the lid, the force of which may break your server's front panel board.

10. Be sure to test the front panel Power switch to verify that the Dell™ PowerEdge™ 750 Adapter is properly installed. If the switch does not operate as expected, then either the Dell™ PowerEdge™ 750 Adapter is not properly seated on the front panel board, the front panel cable is not properly seated on the Dell™ PowerEdge™ 750 Adapter, or the Dell™ PowerEdge™ 750 Adapter is not installed correctly.

11. Connect the server to your WebReboot using the instructions in the WebReboot User's Guide.
12. Configure the WebReboot ports for a Power switch connection. See the WebReboot User's Guide for more details.

What's the Difference Between Reset and Power?

The WebReboot supports two methods of interfacing to a server. The most common method is through the Reset switch pins, while a secondary method is through the Power switch pins. You need to configure the WebReboot for the proper connection type because of the different techniques used to perform a reboot.

For a Reset switch connection, the WebReboot connects the pins together for a brief amount of time, and then releases the pins, which causes the computer to reboot. For a Power switch connection, the WebReboot must first connect the pins together for several seconds (turning the computer off), release the pins and wait (allowing the components to “settle”), and then connect the Power switch pins together again for a brief moment (turning the computer back on).

13. Test the reboot and power-off/power-on functionality from the WebReboot before finishing. If the commands do not operate as expected, then either the ports are improperly configured, the Motherboard Cable or Direct Motherboard Cable is not properly installed on the Dell™ PowerEdge™ 750 Adapter, or the Dell™ PowerEdge™ 750 Adapter is not properly installed on the server's motherboard.



Servprise International, Inc.
447 Rawson Street
Leicester, MA 01524 USA

MANDPE75001