

BUFFALO[®]

AirStation G54

54Mbps Wireless Notebook Adapter-g
User Manual
WLI-CB-G54A

BUFFALO[®]

4030 W. Braker Ln. Suite 120
Austin, Texas 78759
Tel: 800-456-9799
Fax: 512-794-8606



Technical Support is available 24 hours a day, 7 days a week,
Toll-Free: 866-752-6210
email: info@buffalotech.com

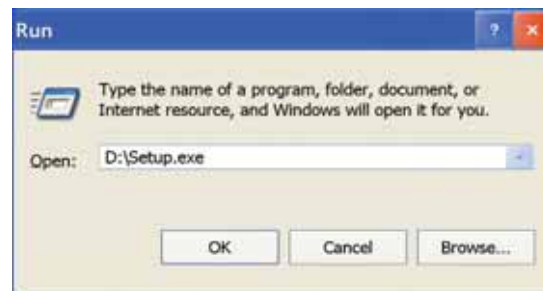
54 Mbps Wireless Notebook Adapter-g

Windows XP

Installation & Configuration

1. Installing the Wireless Notebook Adapter-g Drivers:

- a. Insert the **AirNavigator** CD into the CD-ROM drive of the notebook. The Air Navigator Setup Wizard launches automatically. If the Air Navigator Setup Wizard does not launch automatically, launch the wizard manually by selecting **Start>>Run** to open the **Run** dialog box. Enter **D:\Setup.exe** in the **Open** field. **D:** represents the letter assigned to the CD-ROM drive. If another letter is assigned to the CD-ROM drive, your command should reflect that difference. Click the **OK** button to launch the wizard.



- b. Select **Install Wireless Adapter**. Click the **OK** button to begin the installation process.



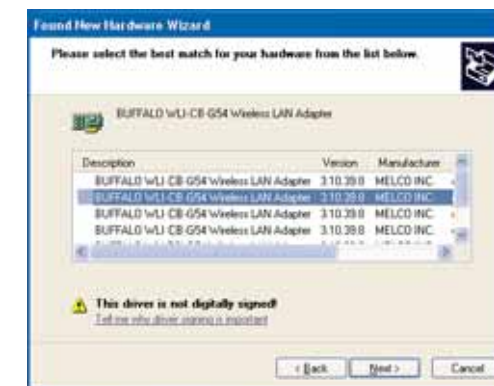
- c. Review the **Software License Agreement**. Click the **Yes** button to confirm your agreement with the terms and continue installing the Wireless Notebook Adapter drivers. Click the **No** button to abort the installation process.

2. Installing the Wireless Notebook Adapter-g:

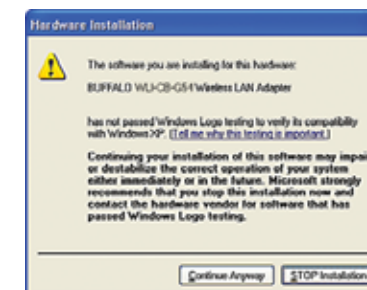
- a. Insert the Wireless Notebook Adapter, with the Buffalo logo facing up, into an available CardBus slot. CardBus slots are usually located on the left or right side of the notebook. Once the Wireless Notebook Adapter is installed correctly, the **Found New Hardware Wizard** will launch automatically. If the Found New Hardware Wizard does not launch, remove the Wireless Notebook Adapter and restart the notebook. Re-insert the Wireless Notebook Adapter once the notebook has rebooted.



- b. Select **Install the software automatically**. Click the **Next** button.
- c. Select the driver you want to install. If multiple drivers are listed, select the most recent driver version. Click the **Next** button.



- d. If a window opens, stating that your driver does not pass Windows Logo testing, click the **Continue Anyway** button. When the Wireless Notebook Adapter is successfully installed, click the **Finish** button. Restart your notebook if prompted.



3. *Configuring Wireless Zero Configuration Service:*

- a. If the Wireless Zero Configuration Service is activated, Windows will scan for available wireless access points once the Wireless Notebook Adapter is properly installed. If Windows detects one or more access points, a networking icon appears on the task bar. **One or more wireless networks are available** appears as a caption accompanying the icon.

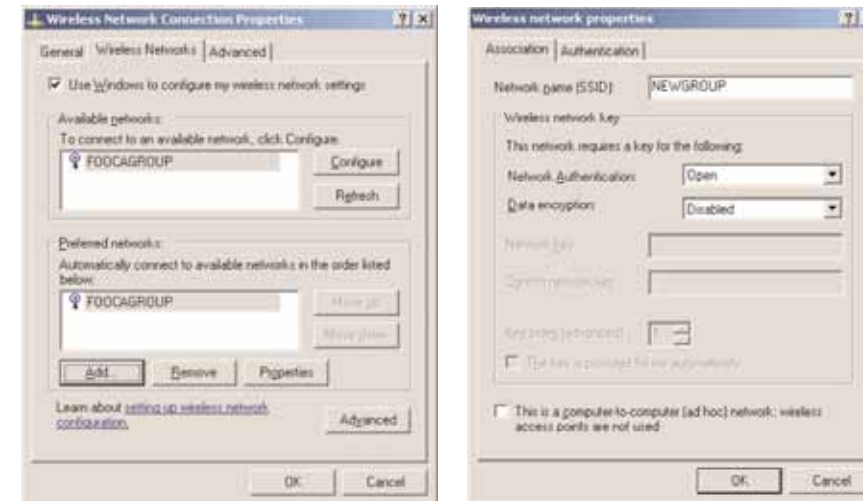


Note: If the Wireless Zero Configuration Service is not functioning, select **Start>Control Panel>Administrative Tools>Services**. Select **Automatic** in the **Startup Type** field of **Wireless Zero Configuration Service** to enable the Wireless Zero Configuration Service. The default value of **Wireless Zero Configuration Service** is **Automatic**.

- b. Right click the networking icon in the taskbar and select **View Available Wireless Networks** to display a list of available wireless networks. Select an access point network name or SSID and click the **Connect** button to establish a connection. You may need to check the box indicating you are connecting to an unsecured network. See step C if you need to enter an SSID network name or WEP/WPA encryption key.



- c. Click the **Advanced** button to enter an SSID network name or WEP/WPA encryption key, if either is necessary. To add an SSID network name that is not available, click the **Add** button.



- e. To configure a WEP/WPA encryption key, select the appropriate wireless network and click the **Configure** button.



- f. From the pull down menu, select the appropriate Network Authentication and Data Encryption for the wireless network. Enter and confirm the Network Key and Key Index. Click the **OK** button when finished.

Note: Buffalo Technology recommends that users of the Wireless Zero Configuration Service upgrade to the latest version freely available at:

<http://www.microsoft.com>.

For advanced support in using Window's XP's Wireless Zero Configuration Service, refer to the Buffalo Support Web Site:

<http://www.buffalotech.com/wireless/support>

Windows 98/ME/2000

Installation & Configuration

1. Installing the Wireless Notebook Adapter-g:

- a. Insert the Wireless Notebook Adapter, with the Buffalo logo facing up, into an available CardBus slot. CardBus slots are usually located on the left or right side of the notebook. Once the Wireless Notebook Adapter is installed correctly, the **Found New Hardware Wizard** will launch automatically. If the Found New Hardware Wizard does not launch, remove the Wireless Notebook Adapter and restart the notebook. Re-insert the Wireless Notebook Adapter once the notebook has rebooted.

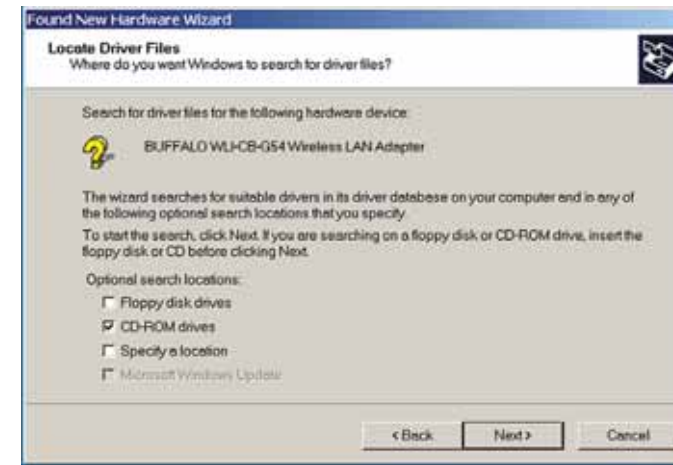


2. Installing the Wireless Notebook Adapter-g Drivers:

- a. Insert the **AirNavigator** CD. Click **Next** at the Welcome to the Found New Hardware Wizard. Select **Search for a suitable driver for my device**. Click the **Next** button to continue.



- b. Select only the **CD-ROM drives** checkbox, and clear any other checkboxes that are selected. Click the **Next** button to continue.



- c. Windows will display a driver you can use with the Wireless Desktop Notebook Adapter. Click the **Next** button to continue.

- d. **Windows 2000:** If the **Digital Signature Not Found** page opens, informing that no digital signature exists for the driver you are installing, click the **Yes** button to continue the installation process. When the Wireless Desktop Notebook Adapter is successfully installed, click the **Finish** button. Restart your computer if prompted.



See the *Installing Client Manager* section to install the Client Manager.

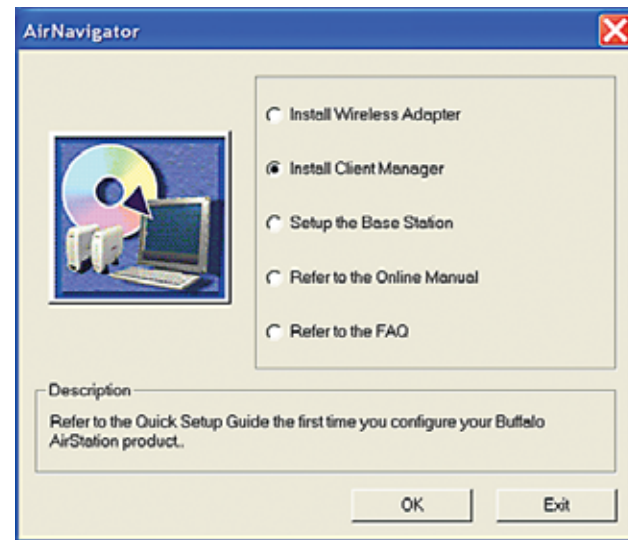
Client Manager

Use Client Manager to configure your wireless network. Use Client Manager to survey and connect to available access points, enable and use WEP encryption, and create connection profiles.

Note: Client Manager does not function properly if the Windows XP Wireless Zero Configuration Service is enabled.

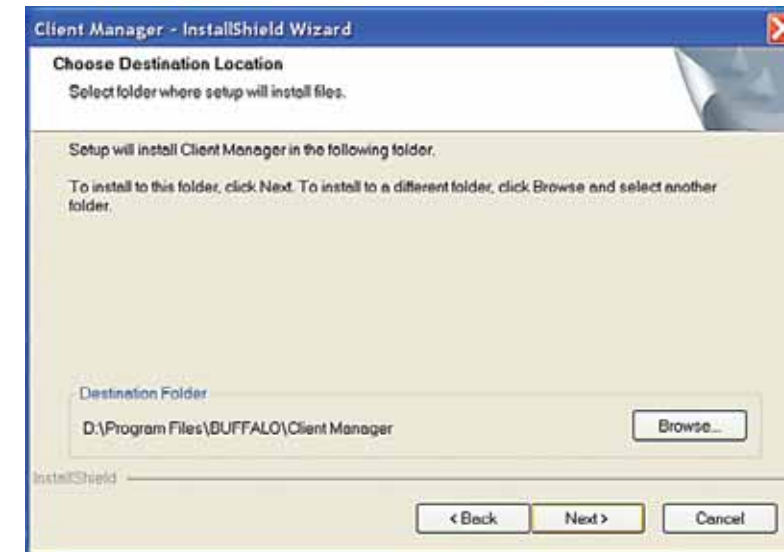
Installing Client Manager

1. Insert the **AirNavigator CD**. The **AirNavigator** dialog box will open automatically. If the **AirNavigator** dialog box does not open automatically, select **Start»Run** and enter **D:\Setup.exe** in the **Open** field to open the dialog box manually. **D:** represents the letter assigned to the CD-ROM drive. If another letter is assigned to the CD-ROM drive, your command should reflect that difference. Click the **OK** button. Select **Install Client Manager** to launch the InstallShield Wizard.



2. Once the InstallShield Wizard launches, click the **Next** button to begin the software installation.

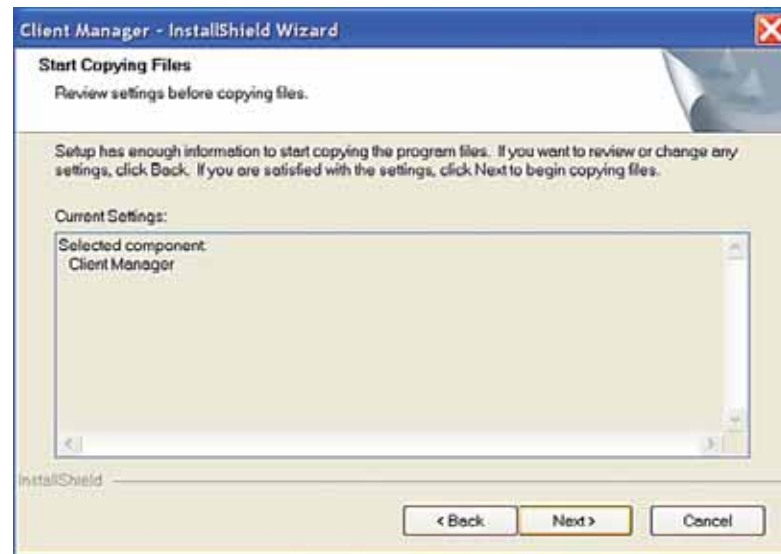
3. Confirm that the installation location for the software is acceptable. To select an alternate installation location, click the **Browse** button and select another location. Click the **Next** button to continue to the **Select Components** page.



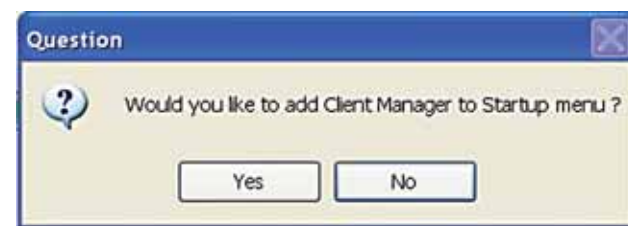
4. Select the components you want to install and click the **Next** button to continue to the **Start Copying Files** page.



5. Click the **Next** button to begin copying the necessary files to install Client Manager.



6. Click the **Yes** button, when prompted, to add a shortcut for Client Manager to your Windows Startup menu. If you click the **Yes** button, Client Manager will run at startup.



7. Click the Finish button to complete the installation of Client Manager. Restart your notebook.

Note: Client Manager and the wireless adapters will not function properly until you reboot the system.

Depending on the operating system, some screens may vary from those shown in this manual. However, by accepting default installation settings, Client Manager should properly install.

Client Manager Configuration

Use Client Manager to configure your wireless network. To assist in configuring your wireless network, Client Manager consists of the Status page, the Survey page, and the Profiles page. You can access each page by clicking the corresponding button on Client Manager. In addition to these pages, several dialog boxes are available to meet specialized configuration needs. You can access the Edit Profile dialog box, New Profile dialog box, IP Configuration dialog box, or WEP Configuration dialog box using the Client Manager pages.

Status Page

Click the **Status** button to open this page. By default, this page is displayed when you start Client Manager. This page displays the status of the connection between the wireless adapter and another wireless device. This page only displays connection information if the wireless adapter is connected to another wireless device.

This page includes the following components:

- **Status**—Displays the association status of the wireless network. Displays **Associated** if the wireless adapter is connected to another wireless device and can pass data through that device. Displays **Not Associated** if the wireless adapter is either not connected to another wireless device or is connected to another wireless device but cannot pass data through the device. If **Status** is **Not Associated**, the other components will not display any information.
- **Network Type**—Displays the mode of your network. Displays **Infrastructure** if your network consists of both wired and wireless devices that communicate through a central device, such as an access point. Displays **Ad-hoc** if your network consists of only wireless devices that communicate with each other directly.



- **Transfer Rate**—Displays the data transfer rate, the rate at which you can transmit and receive data across the wireless network, in Mbps. The data transfer rate can be up to 54 Mbps. A variety of factors, including distance from the router, the allowable data transfer rates of other devices, and the physical conditions of the wireless environment, can affect the data transfer rate.
- **SSID**—Displays the SSID of your network. The SSID is the unique network name that functions as an identifier for your wireless devices. All wireless devices on a network must use identical SSIDs to successfully associate with other devices on the network. **mysid** is an example of a valid SSID.
- **Channel**—Displays the channel your network is using. The channel indicates what range of frequencies the radio waves are occupying. Devices that meet 802.11b and 802.11g standards can use channels 1-11 within the 2.4 GHz spectrum.
- **WEP**—Displays whether WEP encryption is **Enabled** or **Disabled**. WEP encryption is a security method for wireless communications. If **WEP** is **Enabled**, a shared encryption key, also known as a WEP key, is necessary to access the network.
- **MAC Address**—Displays the MAC address of your network device. A MAC address is a unique network name for each device on a network. **00:11:22:33:44:55** is an example of a valid MAC address.
- **Signal Strength**—Displays the strength of the signal. **Signal Strength** is based on the peak signal level the wireless adapter receives from the wireless device to which it is connected.
- **Signal Quality**—Displays the quality of the signal. **Signal Quality** is a signal-to-noise ratio, which is a measurement comparing strength of the signal with the background noise on the wireless network.

Survey Page

Click the **Survey** button to open this page. Use this page to survey the area, display available access points, and connect to available access points.

This page includes the following components:

- **SSID**—Displays the SSID associated with each available access point. The SSID is the unique network name that functions as an identifier for your wireless devices. All wireless devices on a network must use identical SSIDs to successfully associate with other devices on the network. **mysid** is an example of a valid SSID.

- **Channel**—Displays the channel associated with each available access point. The channel indicates what range of frequencies the radio waves emitted by the wireless device are occupying. Devices that meet 802.11b and 802.11g standards can use channels 1-11 within the 2.4 GHz spectrum.
- **WEP**—Displays whether WEP encryption is enabled on each available access point. Displays **Yes** if encryption is enabled and **No** if encryption is not enabled. If WEP encryption is enabled, a shared encryption key, also known as a WEP key, is necessary to access the network.
- **Mode**—Displays the transfer mode associated with each available access point. **Mode** can be **11a**, **11b**, or **11g**.
- **Connect**—Select an available access point and click the **Connect** button to connect to that access point. If **No** is displayed in the **WEP** field and you click the **Connect** button, the wireless adapter will connect to the selected access point and the **Status** page will reopen. If **Yes** is displayed in the **WEP** field and you click the **Connect** button, the **WEP Configuration** dialog box will open.
- **Refresh**—Click the **Refresh** button to update the screen.
- **Signal Strength**—Displays the strength of the signal. **Signal Strength** is based on the peak signal level the wireless adapter receives from the wireless device to which it is connected.
- **Signal Quality**—Displays the quality of the signal. **Signal Quality** is a signal-to-noise ratio, which is a measurement comparing the strength of the signal with the background noise on the wireless network.



Profiles Page

Click the **Profiles** button to open this page. Use this page to access your profiles. Profiles allow you to save the information associated with a specific location so you can quickly and easily connect to your network when you are in that location. The **Profiles** page allows you to add, delete, and edit your profiles, as well as import and export data.

This page includes the following components:

- **Profiles**—Displays the name associated with the profile.
- **SSID**—Displays the SSID associated with the profile. The SSID is the unique network name that functions as an identifier for your wireless devices. All wireless devices on a network must use identical SSIDs to successfully associate with other devices on the network. **mysid** is an example of a valid SSID.
- **Network Type**—Displays the network mode associated with the profile. Displays **Infrastructure** if your network consists of both wired and wireless devices that communicate through a central device, such as an access point. Displays **Ad-hoc** if your network consists of only wireless devices that communicate with each other directly.
- **WEP**—Displays whether WEP encryption is enabled. Displays **Yes** if WEP encryption is enabled and **No** if WEP encryption is disabled. If WEP encryption is enabled, a shared encryption key, also known as a WEP key, is necessary to access the network.
- **Connect**—Click the **Connect** button to update your specifications and return to the **Status** page.
- **Add**—Click the **Add** button to open the **New Profile** dialog box and add a new profile.
- **Edit**—Click the **Edit** button to open the **Edit Profile** dialog box and edit an existing profile.
- **Delete**—Click the **Delete** button to delete a profile.
- **Import**—Click the **Import** button to import data.
- **Export**—Click the **Export** button to export data.
- **Signal Strength**—Displays the strength of the signal. **Signal Strength** is based on the peak signal level the wireless adapter receives from the wireless device to which it is connected.

- **Signal Quality**—Displays the quality of the signal. **Signal Quality** is a signal-to-noise ratio, which is a measurement comparing the strength of the signal with the background noise on the wireless network.



New Profile Dialog Box

Use this dialog box to create a new profile.

This page includes the following components:

- **Profile Name**—Enter the name you want to associate with the new profile.
- **Network Type**—Select the network mode you want to associate with the new profile. Select **Infrastructure** if your network consists of both wired and wireless devices that communicate through a central device, such as an access point. Select **Ad-hoc** if your network consists of only wireless devices that communicate with each other directly.
- **SSID**—Enter the SSID of your network. The SSID is the unique network name that functions as an identifier for your wireless devices. All wireless devices on a network must use identical SSIDs to successfully associate with other devices on the network. **mysid** is an example of a valid SSID.
- **Channel**—Displays the channel associated with the new profile. The channel indicates what range of frequencies the radio waves emitted by the wireless device are occupying. Devices that meet 802.11b and 802.11g standards can use channels 1-11 within the 2.4 GHz spectrum.
- **IP**—Select your preferred method of obtaining your IP address. Select **Automatically** to obtain your IP address automatically. Select **Manually** to manually enter your IP address. If you select **Manually** the **IP Configuration** dialog box will open when you click the **Okay** button.
- **WEP**—Select whether you want to enable WEP encryption. Select **Yes** to enable WEP encryption. Select **No** to disable WEP encryption. If you select **Yes** the **WEP Configuration** dialog box will open when you click the **Okay** button.

- **OK**—Click the **OK** button to save your specifications and return to the **Profiles** page.
- **Cancel**—Click the **Cancel** button to return to the **Profiles** page without saving your specifications.
- **Signal Strength**—Displays the strength of the signal. **Signal Strength** is based on the peak signal level the wireless adapter receives from the wireless device to which it is connected.
- **Signal Quality**—Displays the quality of the signal. **Signal Quality** is a signal-to-noise ratio, which is a measurement comparing strength of the signal with the background noise on the wireless network.



Edit Profile Dialog Box

Select **Profiles»Edit** to open this dialog box. Use this dialog box to edit the settings of an existing profile.

This page includes the following components:

- **Profile Name**—Displays the current name of the profile you are editing. Enter any changes to the name of the profile in this field.
- **Network Type**—Displays the current network mode of the profile you are editing. Select **Infrastructure** or **Ad-hoc** from the menu to change the network type of the profile. Select **Infrastructure** if your network consists of both wired and wireless devices that communicate through a central device, such as an access point. Select **Ad-hoc** if your network consists of only wireless devices that communicate with each other directly.
- **SSID**—Displays the current SSID of the profile you are editing. Enter any changes to your SSID in this field. The SSID is the unique network name that functions as an identifier for your wireless devices. All wireless devices on a network must use identical SSIDs to successfully associate with other devices on the network. is an example of a valid SSID.

- **IP**—Displays the current method of obtaining your IP address. Select **Automatically** or **Manually** from the menu to change the method affiliated with the profile. Select **Automatically** to obtain your IP address automatically. Select **Manually** to manually enter your IP address. If you select **Manually** from the **IP** menu, the **IP Configuration** dialog box will open when you click the **Okay** button.
- **WEP**—Displays whether WEP encryption is currently used by the profile you are editing. Select **Yes** or **No** from the menu to change whether WEP encryption is used with the profile. Select **Yes** to enable WEP encryption. Select **No** to disable WEP encryption. If you select **Yes** from the **WEP** menu, the **WEP Configuration** dialog box will open when you click the **Okay** button.
- **Okay**—Click the **Okay** button to save your changes and return to the **Profiles** page.
- **Cancel**—Click the **Cancel** button to return to the **Profiles** page without saving your changes.
- **Signal Strength**—Displays the strength of the signal. **Signal Strength** is based on the peak signal level the wireless adapter receives from the wireless device to which it is connected.
- **Signal Quality**—Displays the quality of the signal. **Signal Quality** is a signal-to-noise ratio, which is a measurement comparing strength of the signal with the background noise on the wireless network.

IP Configuration Dialog Box

Use this dialog box to manually set your Internet Protocol (IP) specifications.

This page includes the following components:

- **IP Address**—Enter the IP address of your network.
- **Subnet Mask**—Enter the subnet mask.
- **Okay**—Click the **Okay** button to save your specifications and return to the previous dialog box, either the **New Profile** dialog box or the **Edit Profile** dialog box.
- **Cancel**—Click the **Cancel** button to return to the previous dialog box, either the **New Profile** dialog box or the **Edit Profile** dialog box, without saving your specifications.


- **Signal Strength**—Displays the strength of the signal. **Signal Strength** is based on the peak signal level the wireless adapter receives from the wireless device to which it is connected.
- **Signal Quality**—Displays the quality of the signal. **Signal Quality** is a signal-to-noise ratio, which is a measurement comparing strength of the signal with the background noise on the wireless network.

WEP Configuration Dialog Box


Use this dialog box to configure the settings for WEP encryption.

This page includes the following components:

WEP Type—Select the WEP encryption format, **64-bit encryption** or **128-bit encryption**, from the menu. You must use the same WEP encryption format for all devices on your wireless network.

 **Note:** Some wireless products offer only 64-bit WEP encryption. If any products on your network offer only 64-bit WEP encryption, **WEP Type** must be **64-bit encryption**.

Key Format—Select the format for the WEP key, **ASCII** or **Hex**, from the menu. Select **ASCII** if you want to use alphanumeric characters. Select **Hex** if you want to use hexadecimal characters. You must use the same WEP key format for all devices on your wireless network.

 **Note:** Hexadecimal is a more common WEP key format than ASCII. If your network contains products from different vendors, select **Hex** to ensure WEP key compatibility.

WEP Key—Enter your WEP key. Your WEP key is the shared encryption key that is required before a device can access your network. The following table displays the appropriate length of the WEP key, which is based on the **WEP Type** and **Key Format** values.

WEP Type	Key Format	WEP Key
64-bit encryption	ASCII	5 characters
64-bit encryption	Hex	10 characters
128-bit encryption	ASCII	13 characters
128-bit encryption	Hex	26 characters

Okay—Click the Okay button to save your settings and return to the previous page.

Cancel—Click the Cancel button to cancel your action.

- **Signal Strength**—Displays the strength of the signal. **Signal Strength** is based on the peak signal level the wireless adapter receives from the wireless device to which it is connected.
- **Signal Quality**—Displays the quality of the signal. **Signal Quality** is a signal-to-noise ratio, which is a measurement comparing strength of the signal with the background noise on the wireless network.

Wireless Zero Configuration Service (Windows XP)

Windows XP offers the Wireless Zero Configuration Service to support 802.11b and 802.11g wireless networking. This service automatically polls the area for available wireless access points. If an available wireless access point is found, Windows attempts to connect to the access point. If no available wireless access points are found, you must manually add the access points.

Note: The Wireless Zero Configuration Service and Client Manager do not function properly together. If you want to use Client Manager, you must disable the Wireless Zero Configuration Service.

Enabling the Wireless Zero Configuration Service
Select Start»Control Panel»Administrative Tools»Services to open the Services window. Select Automatic in the Startup Type field of Wireless Zero Configuration Service to enable the Wireless Zero Configuration Service.

Note: The default Startup Type value of Wireless Zero Configuration Service is Automatic.

Disabling the Wireless Zero Configuration Service
Select Start»Control Panel»Administrative Tools»Services to open the Services window. Select Disabled in the Startup Type field of Wireless Zero Configuration Service to disable the Wireless Zero Configuration Service.

Specifications

Regulatory Information A

Wireless communication is often subject to local radio regulations. Although AirStation wireless networking products have been designed for operation in the license-free 2.4 GHz band, local radio regulations may impose limitations on the use of wireless communication equipment.

Networking Characteristics Compatibility

- IEEE 802.11g Standard for Wireless LANs (DSSS)
- Wi-Fi (Wireless Fidelity) certified by the Wi-Fi Alliance.

Host Operating System

Microsoft Windows(r) ME/98/NT4.0/2000/XP

Media Access Protocol

CSMA/CA (Collision Avoidance) with Acknowledgment (ACK)

Radio Characteristics (Typical Indoor Ranges)

R-F Frequency Band 2.4 GHz (2400-2483 MHz)
11 selectable sub-channels

Modulation Technique Direct Sequence Spread Spectrum

- OFDM for High Transmit Rate
- CCK for Medium Transmit Rate
- DQPSK for Standard Transmit Rate
- DBPSK for Low Transmit Rate

Spreading 11-chip Barker Sequence

Bit Error Rate (BER) Better than 10⁻⁵

Nominal Output Power 15 dBm (32mW)

Transmit Rate / Range

High Speed 54Mbps

Standard Speed 20 Mbps

Low Speed 1 Mbps

Open Office Environment

160 m (525 ft.)

270 m (885 ft.)

400 m (1300 ft.)

550 m (1750 ft.)

Semi-Open Office Environment

50 m (165 ft.)

70 m (230 ft.)

90 m (300 ft.)

115 m (375 ft.)

Closed Office

25 m (80 ft.)

35 m (115 ft.)

40 m (130 ft.)

50 m (165 ft.)

Receiver Sensitivity -69dBm, -72dBm, -77dBm, -81dBm, -85dBm, -88dBm -87dBm -90 dBm -92 dBm (depends on data rate)

Delay Spread (at FER of <1%) 65 ns 225 ns 400 ns 500 ns (depends on data rate)

• The range of wireless devices can be affected by metal surfaces, solid high-density materials and obstacles in the signal path.

• In Open Office environments, clients can “see” each other, i.e. there are no physical obstructions between them.

• In Semi-open Office environments, work space is separated by room dividers; client cards are at desktop level.

• In Closed Office environments, workspace is separated by floor-to-ceiling brick walls.

NOTE: The range values listed in Table “Radio Characteristics” are typical distances as measured at Buffalo Technology AirStation laboratories. These values are provided for your guidance but may vary according to the actual radio conditions at the location where the AirStation product is installed.

AirStation IEEE 802.11 Channel Sets

The range of the wireless signal is related to the Transmit Rate of the wireless communication. Communications at a lower Transmit range may travel longer distances.

Center Channel ID FCC

1 2412

2 2417

3 2422

4 2427

5 2432

6 2437

7 2442

8 2447

9 2452

10 2457

11 2462 1

1 default channel

External Antenna Connector

MC Card

Troubleshooting/FAQ

Use this section to locate answers to frequently asked questions. Check the Buffalo Wireless Support page for the most up to date information.

What should I do if I already have a version of Client Manager on my notebook?
Update your Client Manager to the version on the CD. If you do not update your Client Manager, there could be a loss of functionality, as some versions of Client Manager will not work properly with the G54 Wireless Notebook Adapter. To update your Client Manager, load the Air Navigator CD and select Install Client Manager. If an old version of Client Manager is on your notebook, the InstallShield Wizard prompts you to select Remove, Repair, or Cancel Operation. Select Repair to update your Client Manager to the version on the CD.

Why won't all my network clients work?

Some operating systems support only a limited number of network clients.

Windows 98/Me: These operating systems support only four network clients. If you install more than four network clients, only the first four clients you install will work.

Will Client Manager support all operating systems?

Client Manager and the G54 Wireless Notebook Adapter currently support only Windows 98/ME/2000/XP. They do not currently support Windows NT, Mac OS, or Linux. For more information, refer to the Mac OS and Linux page in the Troubleshooting section of this help file.

Apple Airport 3.1 with OS 10.2.6 will support the WLI-CB-G54A.

Where can I attach my external antenna?

Insert your external antenna into the antenna slot, located on the back of the G54 Wireless Notebook Adapter.

Why won't Client Manager function properly?

Windows XP—The Wireless Zero Configuration Service conflicts with Client Manager. Select Start»Control Panel»Administrative Tools»Services to open the Services window. Select Disabled in the Startup Type field of Wireless Zero Configuration Service to disable the Wireless Zero Configuration Service.

I have more than one Air Navigator CD. Do I need more than one CD?

No. You receive the same Air Navigator CD with each Buffalo Technology access point and wireless adapter. The CDs are identical and you only need one copy.

Glossary

802.11b—Standards set by IEEE for wireless networking hardware. 802.11 standards specify how wireless devices can interact with an access point or another wireless device. WLANs that meet 802.11b standards can transmit at speeds of 1, 2, 5.5, or 11 Mbps in a 2.4 GHz band. All products that adhere to these standards are compatible with each other, regardless of brand.

802.11g—New proposed standards for wireless networking hardware. 802.11 standards specify how wireless devices can interact with an access point or another wireless device. WLANs that meet 802.11g standards can transmit at speeds up to 54 Mbps in a 2.4 GHz band. All products that adhere to these standards are compatible with each other, regardless of brand.

Access Point—An access point (AP) is a hardware device or a computer's software that acts as a communication hub. APs enable wireless devices to connect to wired LANs. APs provide heightened wireless security and extend the physical range of service a wireless user can access.

Ad-hoc Mode—Networks that function in ad-hoc mode consist of devices that communicate with each other directly, without using an access point. Each device must have a wireless adapter so it can connect as an independent WLAN. Ad-hoc mode is also called peer-to-peer mode or an Independent Basis Service Set (IBSS). Networks that function in ad-hoc mode are most useful when no wireless infrastructure previously exists or external services are not required.

BSS—A Basic Service Set (BSS) consists of a wired network and wireless devices that use an access point to connect to each other.

Channel—A channel is a communications path between two computers or devices.
Digital Signature—A digital signature is an encrypted code that uniquely identifies the sender of electronically transmitted data. A digital signature functions as security device by authenticating the identity of the person sending the data.

DNS—The domain name system (DNS) translates domain names, also known as URLs, into IP addresses. DNS servers create and maintain these associations. There should be one or more DNS servers within close geographical proximity of your access provider.

ESS—An Extended Service Set (ESS) consists of two or more Basic Service Sets that form a single subnetwork.

IBSS—See Ad-hoc Mode.

IEEE—The Institute of Electrical Engineers (IEEE) develops standards for the computer and electronics industry. The IEEE is currently finalizing the draft standards for 802.11g technology.

Infrastructure Mode—Networks that function in infrastructure mode consist of devices that communicate with each other through an access point. Wireless devices can communicate with wired networks or other wireless devices by going through an access point. Infrastructure mode is also called a Basic Service Set (BSS), if it consists of wireless devices and a wired network. Networks that function in infrastructure mode are most useful when a WLAN requires access to a wired LAN for services such as file sharing and printing.

IP Address—An Internet Protocol (IP) address is an identifier for a device or computer on a TCP/IP network. An IP address is a 32-bit numeric address written as four numbers separated by decimal points. 0 to 255 is the available range for each number. 1.225.37.123 is an example of a valid IP address.

LAN—A local-area network (LAN) is a computer network that spans a relatively small area, such as one building or a small group of buildings. Each node in a LAN can access data and devices anywhere on the LAN. However, each node must have a separate CPU to execute programs.

MAC Address—A Media Access Control (MAC) address is an identifier for each node of a network. MAC addresses are unique hardware numbers assigned to each computer or device. A MAC address consists of twelve numbers written as six pairs separated by colons or dashes. 11:22:33:44:55:66 is an example of a valid MAC address.

Node—A node is any device or computer on a network.

SSID—A Service Set Identifier (SSID) is an alphanumeric identifier that acts as a password for devices on a WLAN. SSIDs are case-sensitive and consist of a minimum of two characters and a maximum of 32 characters. SSIDs can function as rudimentary security and can also be used for network segmenting. SSIDs differentiate between WLANs, so all access points and devices attempting to connect to a specific WLAN must use identical SSIDs. **myssid** is an example of a valid SSID.

TCP/IP—Transmission Control Protocol/Internet Protocol (TCP/IP) is a collection of communications protocols for connecting hosts to the Internet. TCP/IP is the industry standard for transmitting data over networks.

WEP—Wired Equivalent Privacy (WEP) is a security measure available for WLANs to help them be as secure as wired LANs. WEP provides security by encrypting data so it is protected as it is transmitted over radio waves. To read encrypted files you must have access to the password, or key, that decrypts the files.

WEP key—A WEP key is a decryption key, or password, that is required to access any WEP-encrypted data. To effectively enable WEP encryption, you must enter your WEP key.

Wi-Fi—Wireless Fidelity (Wi-Fi) refers to any wireless networking equipment that adheres to 802.11 standards.

Wireless Notebook Adapter—A wireless notebook adapter is a 32-bit wireless connection device that fits in the PC card slot of a notebook computer.

Wireless Zero Configuration Service—Windows XP offers the Wireless Zero Configuration Service to support 802.11b and 802.11g wireless networking. This service automatically polls the area for available wireless access points. If an available wireless access point is found, Windows attempts to connect to the access point. If no available wireless access points are found, you must manually add the access points.

WLAN—A wireless local-area network (WLAN) is a local-area network that uses high-frequency radio waves to communicate between nodes.

FCC/CE

Federal Communication Commission Interference Statement

This equipment has been tested and found to comply with the limits for a Class B digital device, pursuant to Part 15 of the FCC Rules. These limits are designed to provide reasonable protection against harmful interference in a residential installation. This equipment generates, uses and can radiate radio frequency energy and, if not installed and used in accordance with the instructions, may cause harmful interference to radio communications. However, there is no guarantee that interference will not occur in a particular installation. If this equipment does cause harmful interference to radio or television reception, which can be determined by turning the equipment off and on, the user is encouraged to try to correct the interference by one of the following measures:

- Reorient or relocate the receiving antenna.
- Increase the separation between the equipment and receiver.
- Connect the equipment into an outlet on a circuit different from that to which the receiver is connected.
- Consult the dealer or an experienced radio/TV technician for help.

FCC Caution: To assure continued compliance, (example - use only shielded interface cables when connecting to computer or peripheral devices). Any changes or modifications not expressly approved by the party responsible for compliance could void the user's authority to operate this equipment.

This device complies with Part 15 of the FCC Rules. Operation is subject to the following two conditions: (1) This device may not cause harmful interference, and (2) this device must accept any interference received, including interference that may cause undesired operation.

IMPORTANT NOTE:

FCC RF Radiation Exposure Statement:

This equipment complies with FCC RF radiation exposure limits set forth for an uncontrolled environment. This equipment should be installed and operated with a minimum distance of 20 centimeters between the radiator and your body.

This transmitter must not be co-located or operating in conjunction with any other antenna or transmitter.

R&TTE Compliance Statement

This equipment complies with all the requirements of the DIRECTIVE 1999/5/EC OF THE EUROPEAN PARLIAMENT AND THE COUNCIL of 9 March 1999 on radio equipment and telecommunication terminal Equipment and the mutual recognition of their conformity (R&TTE). The R&TTE Directive repeals and replaces in the directive 98/13/EEC (Telecommunications Terminal Equipment and Satellite Earth Station Equipment) As of April 8, 2000.

Safety

This equipment is designed with the utmost care for the safety of those who install and use it. However, special attention must be paid to the dangers of electric shock and static electricity when working with electrical equipment. All guidelines of this manual and of the computer manufacturer must therefore be allowed at all times to ensure the safe use of the equipment.

EU Countries intended for use

The ETSI version of this device is intended for home and office use in Austria, Belgium, Denmark, Finland, France (with Frequency channel restrictions), Germany, Greece, Iceland, Ireland, Italy, Luxembourg, Norway, The Netherlands, Portugal, Spain, Sweden, Switzerland and United Kingdom.

The ETSI version of this device is also authorized for use in EFTA member states Iceland, Liechtenstein, Norway and Switzerland.

EU Countries Not intended for use

None.

Potential restrictive use

France: Only channels 10,11,12, and13

Technical Support

Buffalo Technology offers toll-free technical support 24 hours a day, 7 days a week for this product. Customers in the United States and Canada can obtain technical support using the following information:

Online Help—Available on the AirNavigator CD enclosed with your purchase.

Website—www.buffalotech.com/wireless

E-mail—info@buffalotech.com

Telephone—866.752.6210

The constantly evolving state of wireless products and operating systems requires Buffalo Technology to occasionally release updated software to take advantage of new technologies and to comply with industry standards. For the most recent software, firmware, driver, and technical whitepaper releases available, please visit the Buffalo Technology website.