

# MI<sub>PORT</sub><sup>™</sup>

## Quick Start Guide

**Models: 3PCIU2, 3PCIU4, 3PCIU8  
3PCIOU1, 3PCIOU2, 3PCIOU4**

***NOTE:*** PDF versions of this Quick Start Guide and the product manual can be found on the accompanying CD or on B&B Electronics' website.



### International Headquarters

B&B Electronics Mfg. Co. Inc.  
707 Dayton Road  
Ottawa, IL 61350 USA

**Phone** (815) 433-5100 -- **General Fax** (815) 433-5105

Website: [www.bb-elec.com](http://www.bb-elec.com)

**Sales** e-mail: [orders@bb-elec.com](mailto:orders@bb-elec.com) -- **Fax** (815) 433-5109

**Technical Support** e-mail: [support@bb.elec.com](mailto:support@bb.elec.com) -- **Fax** (815) 433-5104

### European Headquarters

B&B Electronics Ltd.  
Westlink Commercial Park  
Oranmore, Co. Galway, Ireland

**Phone** +353 91-792444 -- **Fax** +353 91-792445

Website: [www.bb-europe.com](http://www.bb-europe.com)

**Sales** e-mail: [sales@bb-europe.com](mailto:sales@bb-europe.com)

**Technical Support** e-mail: [support@bb-europe.com](mailto:support@bb-europe.com)

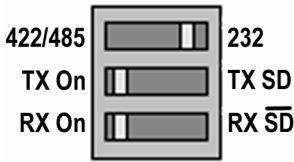
---

October 2004

Documentation Number: 3PCI-MIport-4004qsg

B&B Electronics Mfg Co Inc – 707 Dayton Rd - PO Box 1040 - Ottawa IL 61350 - Ph 815-433-5100 - Fax 815-433-5104 – [www.bb-elec.com](http://www.bb-elec.com)  
B&B Electronics Ltd – Westlink Commercial Park – Oranmore, Galway, Ireland – Ph +353 91-792444 – Fax +353 91-792445 – [www.bb-europe.com](http://www.bb-europe.com)

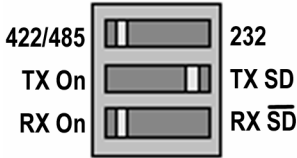
# MIport Serial Card Quick Start Guide



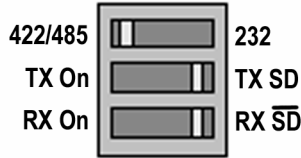
**RS-232 Mode**



**RS-422 Mode**



**4-wire RS-485 Mode**

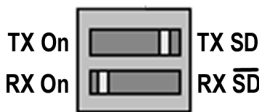


**2-wire RS-485 Mode**

*RS-232/422/485 DIP Switch Settings*



**RS-422 Mode**



**4-wire RS-485 Mode**



**2-wire RS-485 Mode**

*RS-422/485 DIP Switch Settings*

**CAUTION: Make sure computer is unplugged before installing the card.**

Name	Direction (DTE)	DB-9M Pin
DCD	Input	1
RD	Input	2
TD	Output	3
DTR	Output	4
GND	-----	5
DSR	Input	6
RTS	Output	7
CTS	Input	8
RI	Input	9

*RS-232 Pinout*

Name	Direction	DB-9M Pin
RD(A) -	Input	1
TD(B) +	Output	2
TD(A) -	Output	3
GND	-----	5
RD(B) +	Input	9

*RS-422/485 Pinout*

## Setting Send Data/RTS Control

1. From the Windows Desktop, click **Start** → **Settings** → **Control Panel** → **System**
2. On the **System Properties** dialogue box, (click the **Hardware** tab for Windows XP and 2000), click the **Device Manager** button. The **Device Manager** window will appear:
3. Click **Ports (COM & LPT)**

All installed ports should appear in the list. The COM port number assigned to each port will be shown.

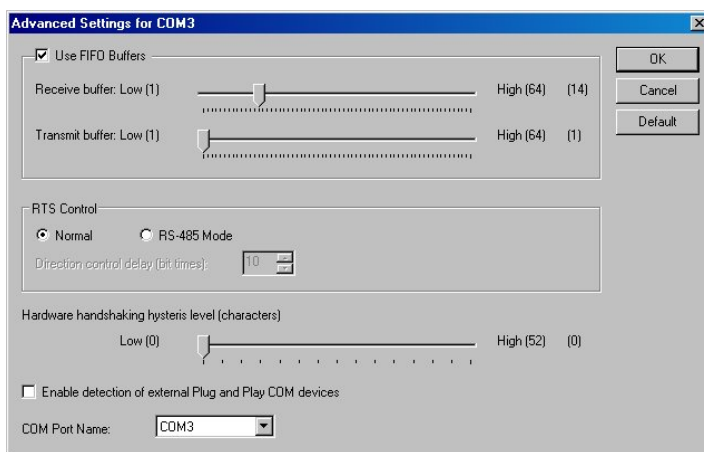
4. On the **Ports (COM & LPT)** list, double-click the name of the port to be configured.
5. On the **Port Properties** dialogue, click the **Port Settings** tab.

The dialogue will display the current settings for Bits per second, Data bits, Parity, Stop bits and Flow control.

6. Click **Advanced...**

The **Advanced Port Settings** dialogue will appear. This screen allows you to set the Receive and Transmit FIFO buffer thresholds, RTS Control parameters, Hardware handshaking hysteresis level and the COM port name.

7. In the **Advanced Port Settings** under **RTS Control** click **Normal** for RS-232 mode, and **RS-485 Mode** for RS-485 mode. **RTS Control** can be in either mode for RS-422.



### *Advanced Port Settings dialogue box for MIport Serial Cards*

Documentation Number: 3PCI-MIport-4004qsg

## DECIMAL TO HEX TO ASCII CONVERTER

DEC	HEX	ASCII	KEY	DEC	HEX	ASCII	DEC	HEX	ASCII	DEC	HEX	ASCII
0	00	NUL	ctrl @	32	20	SP	64	40	@	96	60	`
1	01	SOH	ctrl A	33	21	!	65	41	A	97	61	a
2	02	STX	ctrl B	34	22	"	66	42	B	98	62	b
3	03	ETX	ctrl C	35	23	#	67	43	C	99	63	c
4	04	EOT	ctrl D	36	24	\$	68	44	D	100	64	d
5	05	ENO	ctrl E	37	25	%	69	45	E	101	65	e
6	06	ACK	ctrl F	38	26	&	70	46	F	102	66	f
7	07	BEL	ctrl G	39	27	'	71	47	G	103	67	g
8	08	BS	ctrl H	40	28	(	72	48	H	104	68	h
9	09	HT	ctrl I	41	29	)	73	49	I	105	69	i
10	0A	LF	ctrl J	42	2A	[	74	4A	J	106	6A	j
11	0B	VT	ctrl K	43	2B	+	75	4B	K	107	6B	k
12	0C	FF	ctrl L	44	2C	,	76	4C	L	108	6C	l
13	0D	CR	ctrl M	45	2D	-	77	4D	M	109	6D	m
14	0E	SO	ctrl N	46	2E	.	78	4E	N	110	6E	n
15	0F	SI	ctrl O	47	2F	/	79	4F	O	111	6F	o
16	10	DLE	ctrl P	48	30	0	80	50	P	112	70	p
17	11	DC1	ctrl Q	49	31	1	81	51	Q	113	71	q
18	12	DC2	ctrl R	50	32	2	82	52	R	114	72	r
19	13	DC3	ctrl S	51	33	3	83	53	S	115	73	s
20	14	DC4	ctrl T	52	34	4	84	54	T	116	74	t
21	15	NAK	ctrl U	53	35	5	85	55	U	117	75	u
22	16	SYN	ctrl V	54	36	6	86	56	V	118	76	v
23	17	ETB	ctrl W	55	37	7	87	57	W	119	77	w
24	18	CAN	ctrl X	56	38	8	88	58	X	120	78	x
25	19	EM	ctrl Y	57	39	9	89	59	Y	121	79	y
26	1A	SUB	ctrl Z	58	3A	:	90	5A	Z	122	7A	z
27	1B	ESC	ctrl [	59	3B	;	91	5B	[	123	7B	{
28	1C	FS	ctrl \	60	3C	<	92	5C	\	124	7C	
29	1D	GS	ctrl ]	61	3D	=	93	5D	]	125	7D	}
30	1E	RS	ctrl ^	62	3E	>	94	5E	^	126	7E	~
31	1F	US	ctrl _	63	3F	?	95	5F	_	127	7F	DEL

EIA-232-E (RS-232) Function	PIN #		TO DTE	TO DCE
	DB-25	DB-9		
Shield	1			
Transmit Data (TD)	2	3		>
Receive Data (RD)	3	2	<	
Request To Send (RTS)	4	7		>
Clear To Send (CTS)	5	8	<	
DCE Ready (DSR)	6	6	<	
Signal Ground (SG)	7	5		
Received Line Signal Detector (DCD)	8	1	<	
DTE Ready (DTR)	20	4		>
Ring Indicator	22	9		----

SIGNAL STATE	THRESHOLD VOLTAGES		
	Signal with Respect to SG	Signal A with Respect to Signal B	Signal A with Respect to Signal B
	RS-232	RS-422	RS-485
"0", Asserted, ON, Space, Active	+3 to +25 VDC	+2 to +6 VDC (Transmitter) +0.2 to +7 VDC (Receiver)	+1.5 to +6 VDC (Transmitter) +0.2 to +12 VDC (Receiver)
"1", Disasserted, OFF, Mark, Inactive	-3 to -25 VDC	-2 to -6 VDC (Transmitter) -0.2 to -7 VDC (Receiver)	-1.5 to -6 VDC (Transmitter) -0.2 to -7 VDC (Receiver)
NOTE: Some RS-422 and RS-485 equipment use "+" and "-" descriptors. The "-" corresponds to "A" and the "+" corresponds to "B".			

Documentation Number: 3PCI-MIport-4004qsg