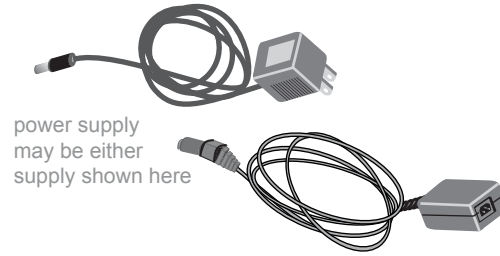


# Quick Start Guide

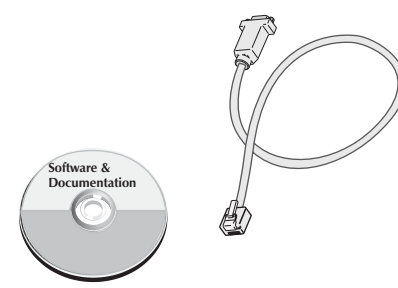
## Digi® TS W Family



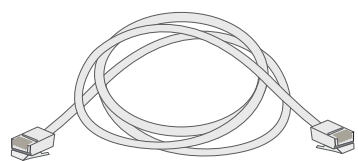
PortServer TS 4 W shown



power supply may be either supply shown here



Software & Documentation



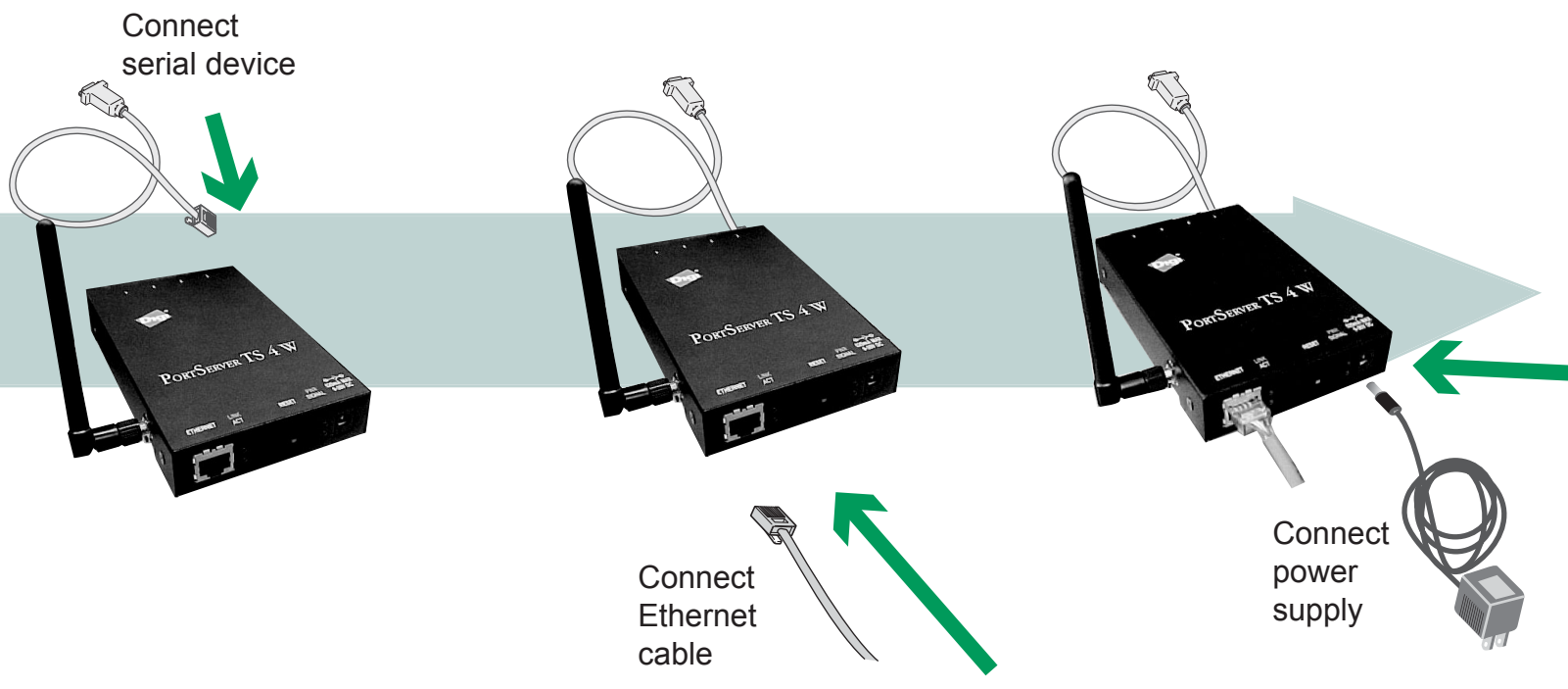
Ethernet cable not included



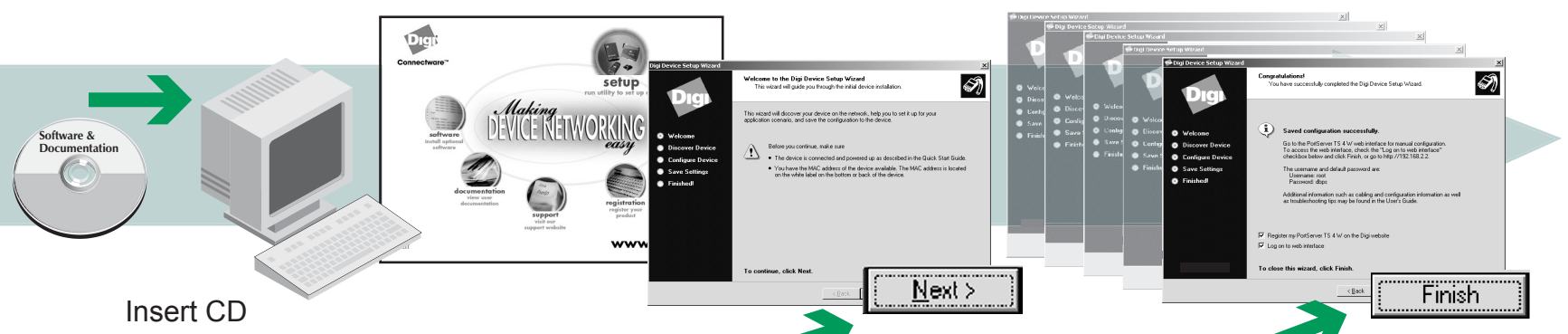
PN:(1P) 90000305 B

Digi One TS® W, PortServer TS® 2 W, PortServer TS® 4 W

### INSTALL



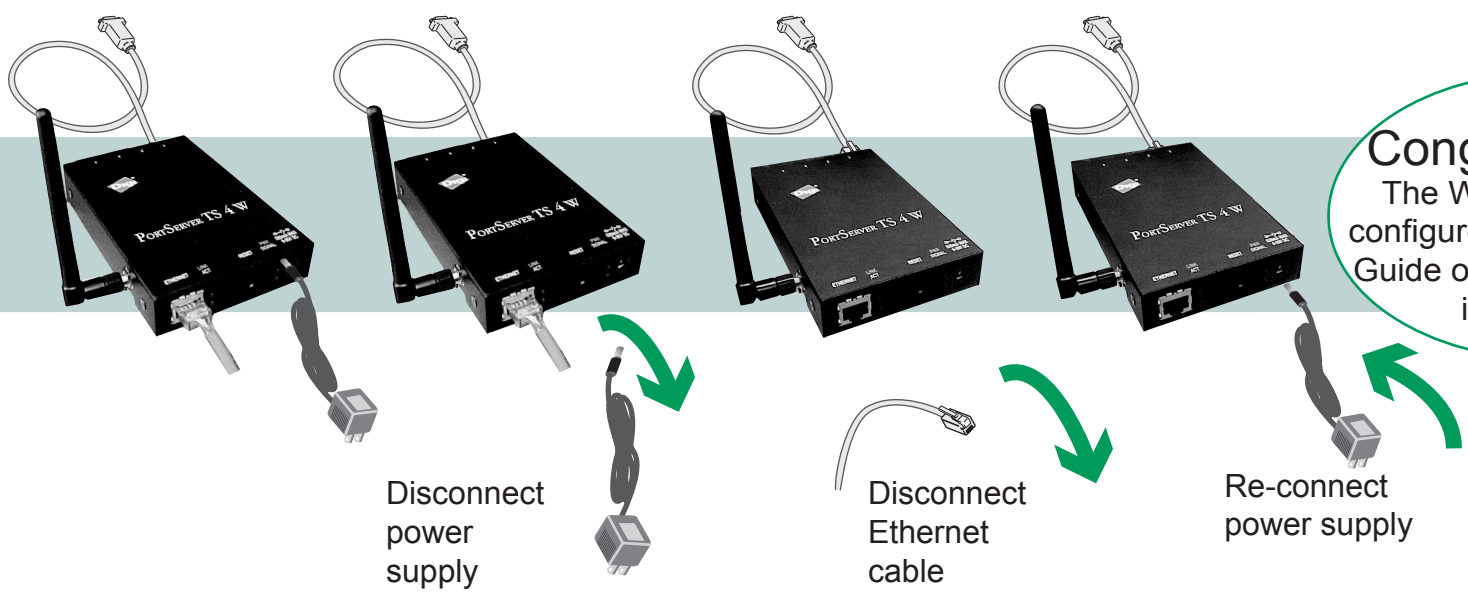
### RUN WIZARD



If you have a UNIX system and it does not use an auto-mounter, you will need to manually mount the CD. See the back of this guide for UNIX specific instructions.

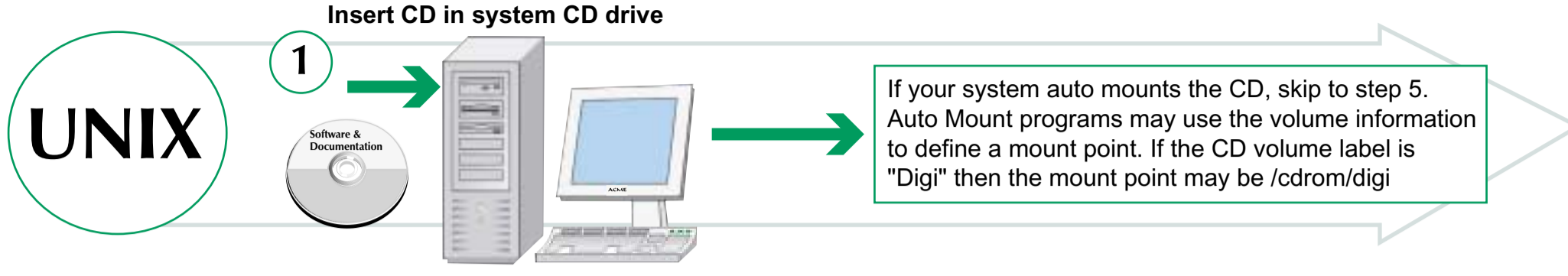
Follow wizard

### REBOOT



**Congratulations!**  
The Wireless device is configured. Go to the User Guide on the CD for more information.

# Accessing the CD from a UNIX System



**2** Determine your CD device

Common names for CD-ROM devices:

NAME	EXAMPLE
/dev/cdrom	/dev/cdrom
/dev/cdrom/cdromn	/dev/cdrom/cdrom1
/dev/cdn	/dev/cd0
/dev/dsk/cktmdn	/dev/clt2d0

To list descriptions of devices:  
 AIX: `lscfg`  
 HPUX: - Make sure you have administrator privileges and your PATH includes /usr/sbin  
`ioscan -funC disk`  
 Solaris: Most Solaris systems use an auto-mounter.  
 See the man page on vold: `man vold`

**3** Identify the mount-directory.

Some common pre-existing mount points:  
 /mnt/cdrom /cdrom  
 Or create your own: `mkdir /mnt/mycdrom`

HPUX - Check to see if pfs is running  
`ps -ef | grep pfs`  
 If not, start the daemons:  
`pfs_mountd& pfsd&`

**4** Mount the CD by entering one of the commands from the following table:

Operating System	Command
AIX	<code>mount -r -v cdrfs device mount-directory</code>
*HPUX	do not use mount, it will not operate correctly <code>pfs_mount device mount-directory</code> See man pages for pfs and pfs_mount for more information.
Linux	<code>mount device mount-directory</code>
SCO UnixWare	<code>mount -r -F cdrfs device mount-directory</code>
SCO OpenServer	<code>mount -r -f ISO9660 device mount-directory</code>
Solaris (Intel & SPARC)	<code>mount -F hsfs device mount-directory</code> Most systems use an auto-mounter. See the man page on vold: <code>man vold</code>

device is the path to the device file assigned to the cdrom drive, mount-directory is the directory where the Digi CD is mounted

\*HPUX When finished, leave the CD directory and `pfs_umount cd`  
`pfs_umount mount-directory`  
 (If you inadvertently use `umount` instead of `pfs_umount`, kill the pfs daemons to remove the CD-ROM.)

**5** Navigate to mounted CD directory, enter: `./setup`

If you see DISPLAY permission errors when running the CD, you may want to verify your DISPLAY variable is set. To set the DISPLAY variable:  
`DISPLAY=localhost:0.0; export DISPLAY`  
 AND/OR  
`xhost +localhost`