

Wireless USB Adapter

A02-UP-W54



Quick Start Guide
A02-UP-W54_GE02



WIRELESS USB ADAPTER

ENGLISH

This product is covered by Atlantis Land 3 years **Fast-Swap** warranty.

For more detailed informations please refer to the web site www.atlantis-land.com.

For more detailed instructions on configuring and using this product, please refer to the online manual.

ITALIANO

Questo prodotto è coperto da garanzia Atlantis Land **Fast-Swap** della durata di 3 anni. Per maggiori dettagli in merito o per accedere alla documentazione completa in Italiano fare riferimento al CD Rom o al sito www.atlantis-land.com.

FRANCAIS

Ce produit est couvert par une garantie Atlantis Land **Fast-Swap** de 3 ans. Pour des informations plus détaillées, référez-vous svp au site Web www.atlantis-land.com.

Le manuel complet en Francais est disponible dans le CD Rom ou sur le WEB.

DEUTSCH

Dieses Produkt ist durch die Atlantis Land 3 Jahre **Fast-Swap** Garantie gedeckt. Für weitere Informationen, beziehen Sie sich bitte auf Web Site www.atlantis-land.com.

ESPAÑOL

Este producto está cubierto de garantía Atlantis Land **Fast-Swap** por 3 años. Para una información más detallada, se refiera por favor al Web site www.atlantis-land.com.



WIRELESS USB ADAPTER



Register your product!

www.atlantis-land.com

Registration on the web site **www.atlantis-land.com** within 15 days from the purchase of the product dismiss the customer from showing a valid proof of purchase (Sale Receipt or Invoice) in case of the request of intervention. For further information we invite you to look at our web site at the section **WARRANTY**.



WIRELESS USB ADAPTER

Thank you for purchasing the IEEE 802.11g Wireless USB Adapter that provides the easiest way to wireless networking. **For more detailed instructions on configuring and using the Wireless USB Adapter, please refer to the online manual.**

1.1 System Requirements

Before installing the Adapter, your PC should meet the following:

- Desktop PC with available USB V2.0 or V1.1
- Intel® Pentium®III 600Mhz or compatible processor with 128MB RAM
- Windows 98SE/ME/2000/XP/VISTA Operating System
- Minimum 15 Mbytes free disk space for installing the driver and utilities
- CD-Rom drive



When plug the device in the USB 1.1/1.0 port, the real throughput will be up to 6Mbps only when running 11Mbps or higher speed

1.2 Package Contents

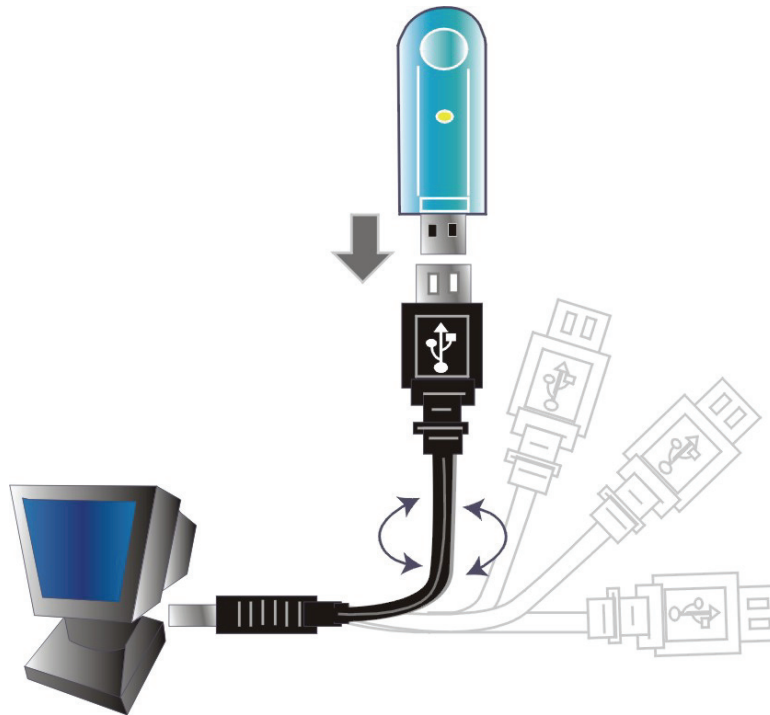
Unpack the package and check all the items carefully. If any item contained is damaged or missing, please contact your local dealer as soon as possible. Also, keep the box and packing materials in case you need to ship the unit in the future. The package should contain the following items:

- One IEEE802.11g Wireless USB Adapter
- One A-type USB male to female extension cable
- One Quick Start Guide
- One CD with driver/utilities and user's manual

1.3 Connecting the USB Extension Cable

The USB extension cable that comes with the Adapter has Type A connectors on both ends. One is a male Type A connector that plugs into the PC's USB port, and the other is a female Type A connector that plugs into the Adapter.

This USB extension cable have a special function, it can be twist to any direction to have the best connection in the air. It is recommended that the Pen Size Wireless USB Adapter was vertically plane with the ground.



1.4. Driver and Utility Installation

This section describes the procedures of installing the driver and utility. Follow the instruction step by step to finish the installation. If you use Windows® 98SE/ME, please prepare the Windows® Setup CD at hand before installing the driver; because the system will ask you to insert the Setup CD to copy files during the installation.

1.4.1 Installing on Windows 98SE/ME

- Start Windows. Insert the driver CD into your CD-Rom drive. After the opening banner, Windows will tell you that the new device has been detected. You will then see the following screen. Click **“Next >”**.
- In the next window, select **“Search for the best driver for your device”** and click **“Next >”**.
- Check **“Specify a location”**. Click **“Browse...”** to specify the driver directory such as **CDRom:\USB\Drivers\Windows98\ (or CDRom:\USB\Drivers\WindowsME)** for installing Wireless USB Adapter . Click **“OK”** and then **“Next>”** to continue.
- When the installation is completed, click **«Finish** button.

1.4.2 Installing on Windows 2000/XP

- Start Windows. Insert the driver CD into your CD-Rom drive. After the opening banner, Windows will tell you that the new device has been detected. You will then see the following screen. Click **“Next >”**.



WIRELESS USB ADAPTER

- Select “**Search for a suitable driver for my device**” (In Windows XP select “**Install from a list or specific location**”). Click “**Next>**”. In next window, check “**Specify a location**” and click “**Next>**”.
- Click “**Browse...**” to specify the driver directory such as **CDRom:\USB\Drivers\Windows2000** (or **CDRom:\USB\Drivers\WindowsXP**) for installing Wireless USB Adapter . Click “**OK**” and then “**Next>**” to continue.
- When windows titled “**Digital Signature Not Found**” appear, press “**Yes**” to continue the installation.
- When the installation is completed, click **Finish** button.

1.4.3 Installing on Windows Vista 32/64



Do not plug USB Wireless Adapter into PC before to install the Driver.

- Go to your Windows Start menu and choose Run, type “**CDRom:\USB\Drivers\Windows Vista\Vista_Setup.exe**” in the dialog box and click **OK**. Simply follow the instructions below which outline what you need to do.
- Click **Allow (An unidentified program wants accept to Your computer)**.
- Click **Next (Device Driver Installation Wizard)**.
- Click **Finish**.
- Please plug Wireless USB Adapter into USB Slot, it will be recognized and auto installed.

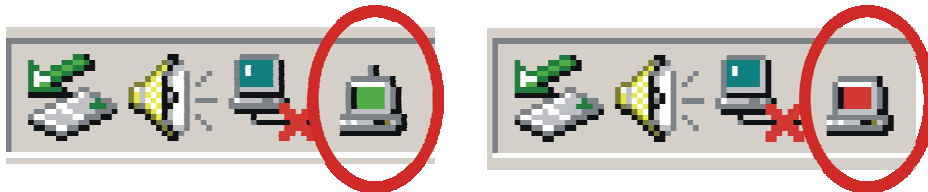
1.5 Utility(Only for Windows 98/2000/XP)

Go to your Windows Start menu and choose Run, type “**CDRom:\USB\Utility\Setup.exe**” in the dialog box and click **OK**. After finish the installation, plugged in the Wireless USB Adapter, you will see Wireless Configuration Utility Country Selector, select the country where you are using this Wireless device, users are responsible for ensuring that the channel set configuration is in compliance with the regulatory standards of these countries.



Be noted that selecting the incorrect region may result in a violation of applicable law; you will need to select the correct domain. You will see the icon on the Windows task bar when you finish the installation.

When the icon in the toolbar represents in green color, it is properly connected to the network and if it represents in red color, then it is not connected to the network.



1.6 Connecting to a Wireless Network

1.6.1 Using Utility (Only for Windows 98/2000/XP)

The IEEE802.11g WLAN Card Configuration Utility icon will appear in your computer’s system tray. Right-click the icon and select “**Open**” to bring up the utility. In the Configuration Utility, select “**Network**” tab, and click “**RESCAN**” button to search the available wireless network(s). Select the network you want. If you have not enabled wireless encryption on your network, then just click “**CONNECT**” button to activate wireless connection. If the wireless encryption is enabled please type the network security key(WPA-PSK or WEP). If the screen doesn’t show any available wireless network, click “**ADD PROFILE**” button to setup encryption or SSID.

1.6.2 Using ZCW(Only for Windows Vista 32/64)

Click **Start** button, then **Control Panel** (Classic View). Double click **Network and Sharing Center** icon. Double-click the Wireless LAN icon (**802.11 USB Wireless Lan Adapter**). Now the wireless NIC updates information on surrounding wireless network. Chose Your Wireless Network and click on **Connect**. Type the network security key or passphrase , click **Connect** then **Close**.



Atlantis Land S.p.A.
Viale De Gasperi, 122
Mazzo di Rho – MI – Italy
info@atlantis-land.com
sales@atlantis-land.com