

For more detailed installation and operating instructions, refer to the related MVP, CV7, and CV10 Instruction Manuals, available on-line at www.amx.com.



FIG. 1 NXA-WC80211GCF wireless card

Overview of the NXA-WC80211GCF Card

This interface card (**FG2255-07**) is a 2.4 GHz WiFi LAN CF Card which upgrades a Modero panel's wireless RF capabilities from 802.11b to 802.11g. This card also provides the end-user with several new methods of wireless encryption and data security such as WPA and WPA2. In addition to being backwards compatible with 802.11b networks, this card can be installed in all current MVP, CV7, and CV10 panels. To fully utilize these newer wireless security features, this card must be used in tandem with the latest Modero firmware upgrade available at www.amx.com.

Specifications

NXA-WC80211GCF Specifications	
Dimensions (HWD):	• 0.22" x 1.68" x 2.40" (5.6 mm x 42.80 mm x 61.0 mm)
Weight:	• 19.50 grams (0.043 lbs)
Description:	• Wireless LAN Compact Flash Card with external PIFA antenna. • Features enterprise-class security such as WPA and WPA2 security.
Features:	• Compact Flash Type I form factor • Enhanced range and throughput • Features wireless security such as: WPA, WPA2 and WEP • Field-installable • Incorporates DSSS and OFDM radio technology • Operates at ISM frequency bands of 2.4 GHz, while providing data transfer speeds of up to 54Mbps. • Support for IEEE 802.11b and 802.11g • Supports Advanced Encryption Standard (AES) 64-bit and 128-bit data encryption, along with an Re4 encryption cipher (64/128-bit) • Supports authentication methods such as: EAP-FAST, EAP-LEAP, EAP-PEAP, EAP-TLS, and EAP-TTLS • Supports Wired Equivalent Privacy (WEP) 64-bit and 128-bit data encryption (known to the on-board firmware as Static WEP)
Antenna Type:	• External PIFA antenna (factory-installed)
Bus Interface:	• Compact Flash Type I
Certifications:	• FCC Part 15 Class B, CE, IC, TELEC, and Wi-Fi
Media Access Control Technique:	• CSMA/CA with ACK
Media Access Control Techniques:	• Using 802.11b DSSS communication: DBPSK @ 1 Mbps DQPSK @ 2 Mbps CCK @ 5.5 Mbps • Using 802.11g OFDM communication: BPSK @ 6 and 9 Mbps QPSK @ 12 and 18 Mbps 16-QAM @ 24 and 36 Mbps 64-QAM @ 48 and 54 Mbps
Network Architecture:	• Infrastructure mode (Client-to-Access Point)
Operating Channels:	• Using 802.11b & g communication: - 04: (Ch 10 - 13) - France - 11: (Ch 1 - 11) - North America (USA) - 13: (Ch 1 - 13) - Europe ETSI - 13: (Ch 1 - 13) - Japan (802.11g) - 14: (Ch 1 - 14) - Japan (802.11b) Note: To alter the card's default country code (North America), please contact an AMX Technical Support representative for detailed procedures and information.
Operating Environment:	• Temperature: 0°C ~ 45°C (32°F to 113°F) (operating) and -20°C ~ 70°C (-4°F to 158°F) (storage) • Humidity: (non-condensing) 5% ~ 90% RH (operating) and (non-condensing) 5% ~ 95% RH (storage)
Operating Voltage:	• 3.3V + 5% I/O supply voltage

NXA-WC80211GCF Specifications (Cont.)	
Power Consumption:	• @ 802.11b communication: - RX: 270 mA - TX: 435 mA - Standby: 240 mA • @ 802.11g communication: - RX: 270 mA - TX: 460 mA - Standby: 240 mA
Radio Data Rate:	• 802.11g compliant: 1, 2, 5.5, 11 (DSSS/CCK); 6, 9, 12, 18, 24, 36, 48, and 54 (OFDM) Mbps data rates
Radio Technology:	• Using 802.11b communication: DSSS (Direct Sequence Spread Spectrum)/CCK (Complementary Code Keying) • Using 802.11g communication: DSSS/CCK, OFDM (Orthogonal Frequency Division Multiplexing)
Receiver Sensitivity:	• Using 802.11b communication @ FER<8%: 1 Mbps: -94 dBm (max) 2 Mbps: -93 dBm (max) 5.5 Mbps: -92 dBm (max) 11 Mbps: -90 dBm (max) • Using 802.11g communication @ PER <10%: 6 Mbps: -87 dBm (max) 9 Mbps: -86 dBm (max) 12 Mbps: -86 dBm (max) 18 Mbps: -84 dBm (max) 24 Mbps: -82 dBm (max) 36 Mbps: -78 dBm (max) 48 Mbps: -74 dBm (max) 54 Mbps: -72 dBm (max)
RF Frequency Ranges:	• Using 802.11b & g communication: Europe ETSI: 2.412 ~ 2.472 GHz France: 2.457 ~ 2.472 GHz Japan (802.11b): 2.412 ~ 2.484 GHz Japan (802.11g): 2.412 ~ 2.472 GHz North America: 2.412 ~ 2.462 GHz
Standard Conformance:	• IEEE 802.11b • IEEE 802.11g • IEEE 802.11e • IEEE 802.11i • Wi-Fi (WPA and WPA2)
Touch Panel Compatibility:	• MVP-7500 (FG5965-01) • MVP-8400 (FG5965-02) • MVP-8400i (FG5965-04) • NXD-CV10 (FG2259-02) • NXT-CV10 (FG2259-01/03) • NXD-CV7 (FG2258-02) • NXT-CV7 (FG2258-01)
Transmit Output Power:	• 802.11b communication: 12 +-1 dBm (1, 2, 5.5, 11 Mbps) • 802.11g communication: 12 +-1 dBm (6, 9, 12, 18, 24, 36, 48, and 54 Mbps)
Wireless LAN Security:	• EAP-FAST • EAP-LEAP • EAP-PEAP • EAP-TLS • EAP-TTLS • WEP 64 & 128 • WPA-PSK
Included Accessories:	• Double-sided adhesive tape • Mounting Template cutout (62-2255-04) • NXA-WC80211GCF Quick Start Guide • Two Alcohol cleaning pads • Wireless CF card with wireless antenna
Other AMX Equipment:	• NXA-WAP250G Modero Wireless Access Point (FG2255-50) • Upgrade Compact Flash memory (factory programmed with firmware). <i>These Compact Flash cards now come with panel-specific firmware for the MVP, CV7, and CV10 touch panels.</i>

Before You Begin - Upgrade the Firmware

1. Upload the **latest** panel-specific kit file to your existing MVP, CV7, or CV10 touch panel and then confirm the firmware file update was successful. Refer to your panel's instruction manual for detailed communication and Kit file upload procedures.

Note: Each panel should be updated using its associated panel-specific kit file (SW5965_01.kit for the MVP-7500, SW5965_02.kit for the MVP-8400, SW2258_02 for the CV7, and SW2259_02 for the CV10).

This new firmware file provides both backwards compatibility with the previous 802.11b cards and new security protocols for the new 802.11g wireless CF card.

Caution: If you don't first update the firmware file on the panel, before proceeding with the card upgrade process, you will be required to configure NetLinx Studio to communicate with the target panel via a direct USB connection. In this communication scenario, your PC acts as a Virtual NetLinx Master establishing a secure USB connection to the target panel and then uploading the new Kit file.

NXA-WC80211GCF Card and Antenna Overview

This upgrade kit requires that pre-existing panels first be removed from their current location (surface, wall or docking station) before an installer can access the internal circuit boards and upgrade a pre-existing 802.11b wireless CF card.

MVP panels require the use of a cardboard cutout (Mounting Template) to properly position the metal antenna plate onto the inner surface of the unit's rear plastic housing.

CV7 and CV10 panels only require locating the Compact Flash's metal cover plate on the main circuit board and then adhering the terminal antenna connector to that location using the included double-sided adhesive tape.

Note: If the CF metal cover plate is not present over the wireless card slot on a CV7 or CV10 panel, you can use the adhesive tape to secure the terminal antenna to the surface of the new card (atop the product label).

The procedures for upgrading a CF card on an MVP is identical for both MVP-7500 and MVP-8400 panels. The procedures for upgrading/installing the new CF card are also similar across all referenced NXT panels and NXD panels as a group (differences arise from their housing).

NXA-WC80211GCF Installation into MVP Panels

Upgrading the wireless CF card on an MVP involves opening the panel enclosure, removing the existing card, replacing it with the upgrade, and then closing the panel enclosure, as described below.

Note: Batteries should be removed prior to upgrading the card.

Step 1: Access the MVP's Internal Components

- Carefully detach any connectors from the touch panel and then gently place the MVP LCD facedown onto a soft cloth to expose the battery compartment. This step helps prevent scratching of the LCD.
- Slide the Battery Compartment cover (FIG. 2) away from the metal plate to expose the internal battery compartment (2 battery slots).

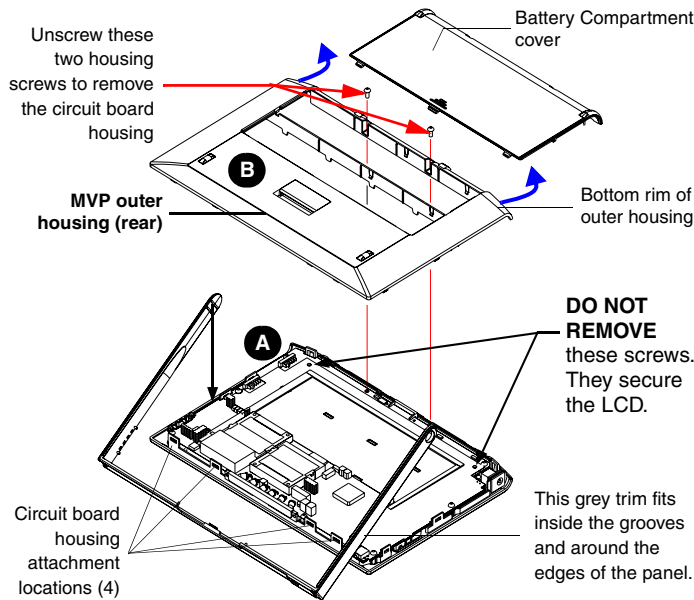


FIG. 2 Removing the MVP enclosure (housing)

- Remove any previously installed MVP-BP batteries prior to removing the outer housing.
- Use a grounded Phillips-head screwdriver to remove the two housing screws shown in FIG. 2. Once done, place these screws aside.
- Grasp the bottom rim of the outer housing (just above the MVP interface connector - Blue arrows in FIG. 2) and **in a single motion**, carefully pull the bottom rim up and then out (away from the IR Emitter) to expose the internal circuit board (A in FIG. 2). *It might be necessary to repeat this process along the bottom and sides of the housing as well.*
- Remove the dark grey trim from the top rim of the board (FIG. 2).
- After you have completed the upgrade process, complete the installation by continuing to Step 3: Close and Re-secure the MVP Panel Enclosure section on page 3.

Step 2: Install the new 802.11g CF Card and Antenna (MVPs)

- Discharge any static electricity from your body by touching a grounded metal object and then locate the wireless card slot on the main board (FIG. 3).
- Place the circuit board (A in FIG. 2) on a flat level surface so that the IR Emitters are pointing away from you.
- Insert the tip of a grounded flat-head screwdriver into one of the card removal grooves (located on either side of the existing CF card), and gently pry it out of the slot. Repeat this process on the opposite card removal groove. *This alternating action causes the pre-existing card to "wobble" away from the on-board connector pins.*
- Slip your finger into the gap (between the card and the circuit board), firmly grab the old card by its sides, and then carefully pull it up and out from the slot. An angular removal of the card is required because one of the housing's latch attachments blocks the slot opening. **USE CARE WHEN PULLING UP ON THE CARD.**
- Flip over the MVP's rear housing (B in FIG. 2) so that the internal support structures are visible and then lay it directly in front of the circuit board such that the battery compartment is furthest away from you. This placement provides contact of both top rims (FIG. 3).
- Remove one of the included alcohol pads and use it to thoroughly clean both the rear housing's inner surface (bottom right corner) and the underside of the terminal antenna's metal plate (FIG. 1). These surfaces must be properly cleaned to provide good adhesion for the later installation of the wireless antenna.
- Place the included Mounting Template cutout along the bottom right corner of the rear housing (FIG. 3). Use the housing's inner support structures to fix the template into place.

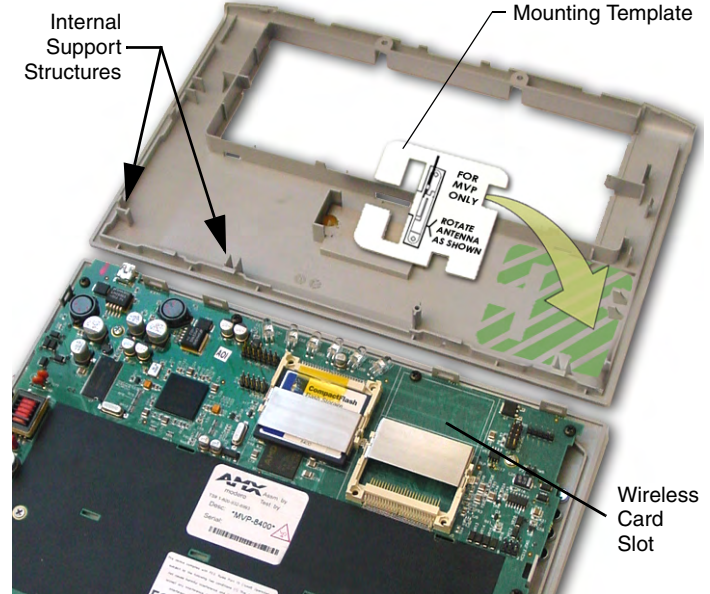


FIG. 3 Installing the Mounting Template in the correct location

- Remove the new NXA-WC80211G CF card from its anti-static bag.
- Grip the sides of the new wireless card and insert it firmly into the slot opening (at a downward angle) until the contact pins are completely inside the card and securely attached to the pin sockets.

Note: You must precisely align the double-sided tape to the surface of the terminal antenna's metal plate in order to later secure the antenna within the pre-defined installation area outlined by the included Mounting Template.

- Carefully peel-off one side of the included double-sided tape and adhere the adhesive side to the surface of the antenna's metal plate.
- Locate the T-shaped opening on the left of the cutout and make sure the antenna wire is located along the left side of the cutout (FIG. 4).
- Grip the antenna by its sides and carefully peel-off the remaining protective film on the double-sided tape.
- Align the antenna into the long vertical groove in the cutout and firmly adhere it to the inner surface of the housing. *Make sure the wire is threaded along the left side of the cutout, this helps in the removal of the cutout.*

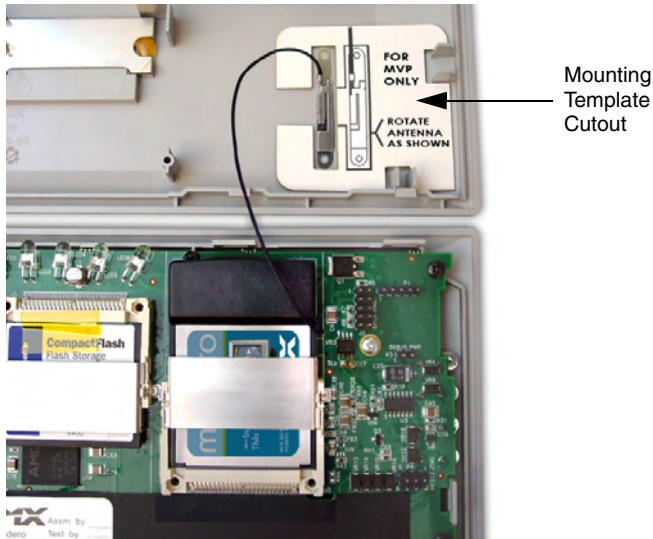


FIG. 4 Adhering the antenna plate to the MVP outer housing

14. With the antenna now securely attached to the MVP's inner housing, remove the cutout by carefully pulling up on the cutout and threading the antenna wire through the T-shaped opening.
15. To complete the upgrade process, close and re-secure the panel enclosure using the procedures in the following step.

Step 3: Close and Re-secure the MVP Panel Enclosure

Note: When re-securing the enclosure, care must be taken not to pinch the antenna wire in the housing.

1. Reinstall the dark grey trim along the top rim of the board (B in FIG. 5).
2. While angling the top rim of the MVP's rear outer housing (A in FIG. 5) down toward the IR Emitters, insert the four outer housing latches into their corresponding attachment locations along the top rim of the MVP panel (two on either side of the IR Emitters).

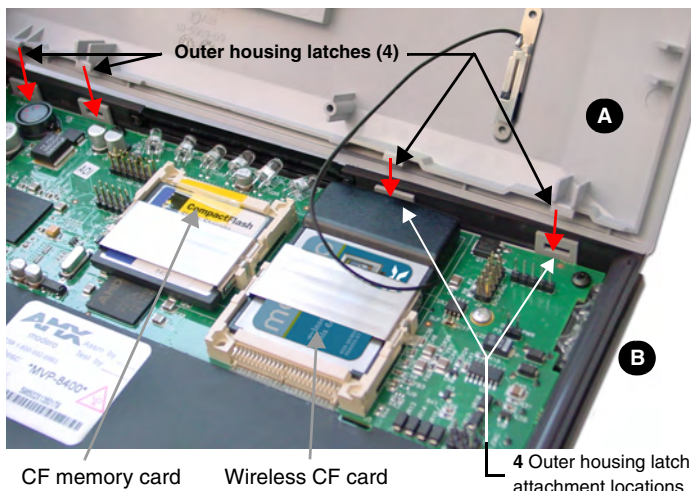


FIG. 5 Wireless CF card and outer housing latch attachment locations

3. While firmly holding the top rims together, gently press down on the bottom ridge of the outer housing (at the latch locations) and verify that each housing latch fits within its corresponding attachment location on the board. When done, complete the insertion of the remaining housing latches.
4. Verify that the notches along the bottom of the plastic battery slot separator strip also fit into the three provided alignment holes on the circuit board.
5. Firmly press down around the entire rim of the outer housing to snap the cover back into place (FIG. 5).
6. Use a grounded Phillips-head screwdriver to insert and re-secure the two housing screws removed in Step 1 (FIG. 2).
7. Insert any available batteries back into the battery compartment.

8. Grab the battery cover and align it over the edges of the battery compartment. Apply downward pressure to the traction grooves on the Battery Compartment cover and slide it back towards the metal plate to reinstall the cover (FIG. 5).

Note: Once the Wireless CF Card has been installed, be careful opening the MVP's housing so that the CF card's antenna (mounted to the inside of the bottom housing) is not accidentally damaged or disconnected.

NXA-WC80211GCF Installation into Modero NXT Panels

Upgrading the wireless CF card in NXT-CV7/10 Table Top Touch Panels involves removing the outer housing (with speaker plate), installing the new 802.11g wireless card, and then placing the outer housing back onto the NXT panel, as described below.

Step 1: Remove the Existing NXT Outer Housing

1. Carefully detach all connectors from the rear of the touch panel and then gently place the touch panel LCD facedown onto a soft cloth to expose the under-side of the base (FIG. 6). This step helps prevent scratching of the LCD.
2. Tilt the base forward so that both the bottom surface and Housing Screws are easily accessible and then carefully remove the four plastic adhesive feet.
3. While holding the outer housing and base plate at a 45° angle (to prevent it from sliding), use a grounded Phillips-head screwdriver to remove the four Housing Screws (FIG. 6).

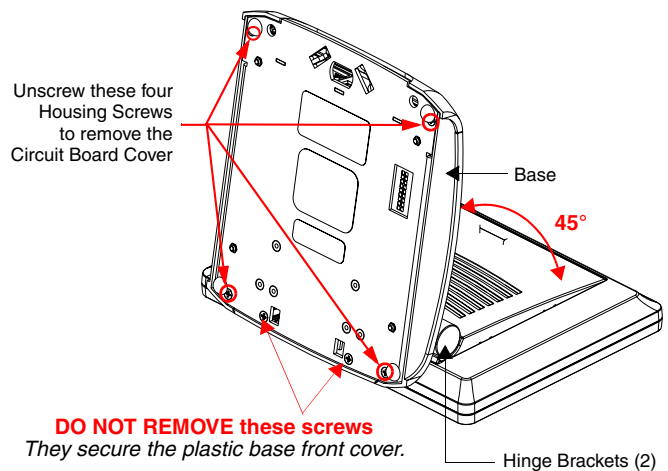


FIG. 6 Location of the attachment screws underneath an NXT panel base

Note: Reference the location of the four plastic adhesive "feet". Once the outer housing is placed back onto the panel, these "feet" must be placed back in their original locations so they can fit into their provided openings on a Battery Base.

4. Rotate the panel back over (while gripping the entire unit and outer housing) and rest the base back onto a flat surface.
5. Gently tilt the LCD panel backwards to expose the Tilt Bracket/Speaker assembly (FIG. 7).

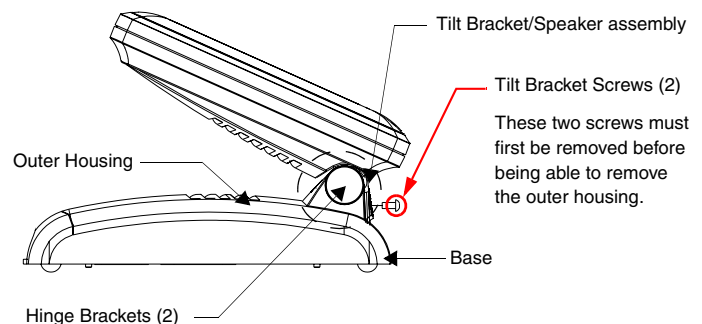


FIG. 7 Location of the attachment screws underneath an NXT panel base

6. Locate the two screw holes at either sides of the front speaker grill and then use a grounded Phillips-head screwdriver to remove the two Tilt Bracket Screws (FIG. 7).

This procedure both loosens the rear Tilt Bracket cover plate (*with the AMX logo and Hinge brackets*) and provides greater flexibility for the removal of the outer housing.

Without this step, the Hinge brackets (FIG. 7) present an obstacle to the removal of the outer housing and restrict access to the circuit board.

7. Tilt the LCD panel back up to gain better access to the Tilt Bracket cover plate.
8. **In a single motion**, carefully pull both the Tilt Bracket cover plate and outer housing up and then out (away from the LCD panel) to expose the internal circuit board.

Step 2: Install the new 802.11g CF Card and Antenna (NXT)

1. Discharge any static electricity from your body by touching a grounded metal object and then locate wireless card slot on the main board (FIG. 8).

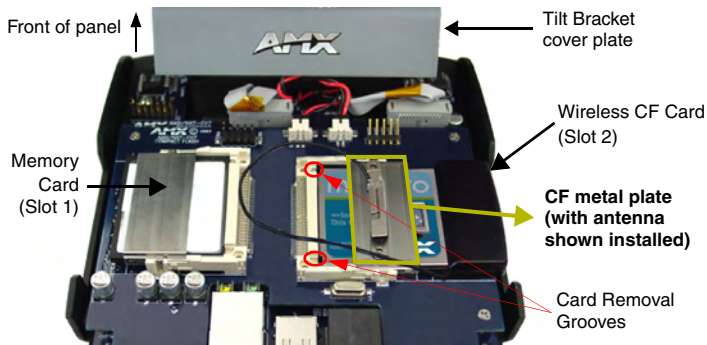


FIG. 8 Location and orientation of the card slots (on both CV7/CV10 panel types)

2. Insert the tip of a grounded flat-head screwdriver into one of the card removal grooves (located on either side of the existing CF card), and gently pry it out of the slot. Repeat this process on the opposite card removal groove. *This alternating action causes the pre-existing card to "wobble" away from the on-board connector pins.*
3. Grip the old card by its sides and then carefully pull it out of the slot.
4. Remove one of the included alcohol pads and use it to thoroughly clean both the CF metal cover (FIG. 8) and the metal plate on the underside of the terminal antenna (FIG. 1). These surfaces must be properly cleaned to provide good adhesion for the later installation of the wireless antenna.
5. Remove the new NXA-WC80211G CF card from its anti-static bag.
6. Grip the sides of the new wireless card and insert it firmly into the slot opening until the contact pins are completely inside the card and securely attached to the pin sockets.

Note: You must precisely align the double-sided tape to the surface of the antenna's metal plate in order to properly secure the antenna within to the CF metal cover plate.

7. Carefully peel-off one side of the included double-sided tape and adhere the adhesive side to the surface of the antenna's metal plate.
8. Grip the antenna by its sides and carefully peel-off the remaining protective film on the double-sided tape.
9. Align the antenna atop the CF metal cover plate and press down firmly to securely adhere it.

Note: If the CF metal cover plate is not present over the wireless card slot, you can use the adhesive tape to secure the terminal antenna to the surface of the new card (atop the product label).

10. To complete the upgrade process, close and re-secure the panel enclosure using the procedures in the following step.

Step 3: Close and Re-secure the NXT Panel Enclosure

1. **In a single motion**, gently slide the rear Tilt Bracket cover plate back over the tilt mechanism (*located below the LCD*) and (*while angling the housing downwards*) slide the outer housing below the Tilt Bracket and towards the LCD (at a downward angle).
2. Locate the two screw holes at either sides of the front speaker grill and then use a grounded Phillips-head screwdriver to both insert and secure the two Tilt Bracket Screws (FIG. 7). This procedure re-secures the rear Tilt Bracket cover plate (*with the AMX logo and Hinge brackets*).
3. Press the outer housing forwards until it is aligned over the outer housing installation holes. Once installed and secured, the tilt bracket prevents any further movement (FIG. 7).
4. Gently press down on the housing (toward the base) until it is securely positioned over the circuit board and base.

Caution: Use care when re-installing the outer housing. Improper re-installation can cause damage to the internal speakers.

5. While holding the circuit board cover in place, turn the panel back over until the LCD lies facedown on a soft cloth and the under-side of the base is exposed (FIG. 6).
6. Insert and secure the four Housing Screws (using a grounded Phillips-head screwdriver) in their respective locations (FIG. 6).
7. Replace any adhesive plastic "feet" that might have been removed during the removal process of the outer housing. These "feet" must be placed back onto their original locations so they can fit into their provided openings on the Battery Base.
8. Grasp both the LCD and housing and then gently rotate the entire unit back onto a flat surface.
9. Insert all connectors and apply power.

NXA-WC80211GCF Installation into Modero NXD Panels

Upgrading the wireless CF card in NXD-CV7/10 WallMount Touch Panels involves removing the rear plastic outer housing (back box), installing the new 802.11g wireless card, and then securely placing the back box back onto the NXD panel, as described below.

Step 1: Remove the Existing NXD Outer Housing

1. Carefully detach all connectors from the side of the touch panel and remove the faceplate from the front of the panel.
2. Place the LCD facedown on a soft cloth to expose the under-side of the unit (FIG. 9). This step helps prevent scratching of the LCD.

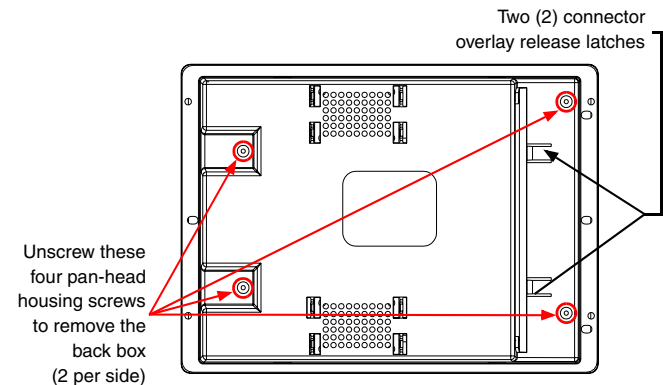


FIG. 9 Location of the securing screws and overlay on an NXD panel

3. Firmly press down on both connector overlay release latches (located in front of the connectors). Pressing down releases the connector overlay from atop the connectors.

Note: The overlay connector must first be released before the rear back box can be removed from the NXD panel.

4. Gently slide the connector overlay away from the back box housing.
5. Unscrew the outer housing (back box) by using a grounded Phillips-head screwdriver to remove the two sets of pan-head Housing Screws, located on both sides of the housing (FIG. 9).

Caution: The circuit board comes pre-wired to internal speakers located on the inside surface of the rear back box. If the back box is removed incorrectly, these speaker wires can become disconnected and damaged.

6. Carefully lift-off the back box housing and angle it over to the side of the unit where the wires are connected to the circuit board (FIG. 10).
7. Gently lay the back box to one side of the unit. This exposes the internal circuit board. Take care not to place undue strain on the speaker cables.

Step 2: Install the new 802.11g CF Card and Antenna (NXD)

1. Complete the procedures outline within *Step 2: Install the new 802.11g CF Card and Antenna (NXT)* section on page 4 and then continue with the following step.

Step 3: Close and Re-secure the NXD Panel Enclosure

1. Gently place the outer housing back onto the panel and align the four pan-head Housing Screws holes along the edges of the outer housing.
2. Insert and secure the four pan-head Housing Screws back into their pre-drilled holes by using a grounded Phillips-head screwdriver.
3. Slip the connector overlay back into the connector opening by inserting the top of the overlay into the connector opening in an upwards direction.
4. Align the connectors to their respective locations and secure the overlay by pushing it towards the connectors until the overlay securely snaps back into the overlay release latches.
5. Re-install the faceplate back onto the panel.

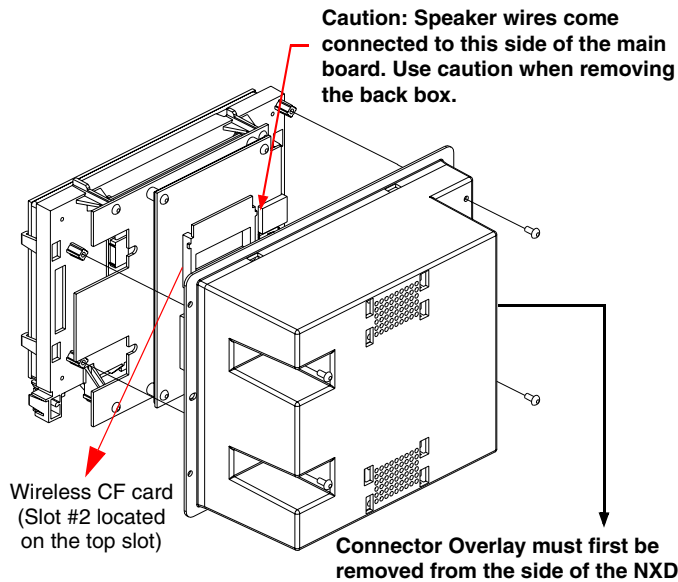


FIG. 10 Location of the wireless CF card connector on main board

Unsecured Panel Access using a DHCP Address

These installation procedures use an indirect communication method (via the wireless card communicating to the Wireless Access Point (WAP)).

In determining the method of communication, the panel (except for the MVP) always defaults first to direct Ethernet communication. If no direct connection is detected, the panel then checks to see if there is an installed wireless card and then communicates to the WAP using the Wireless Settings assigned within the Wireless Settings page. *The communication parameters of the wireless card (installed within the panel) must match those of the target WAP.*

1. Complete the previous firmware update and wireless card upgrade installation procedures.

Note: The previous 802.11b wireless card only supported Clear Text, WEP 64, and WEP 128 encryption. The new 802.11g wireless CF card (using the latest firmware) not only supports the previous formats but also now WPA and EAP security protocols.

2. Power-up the panel and navigate to **Protected Setup > Wireless Settings** to open the Wireless Settings page (FIG. 11).

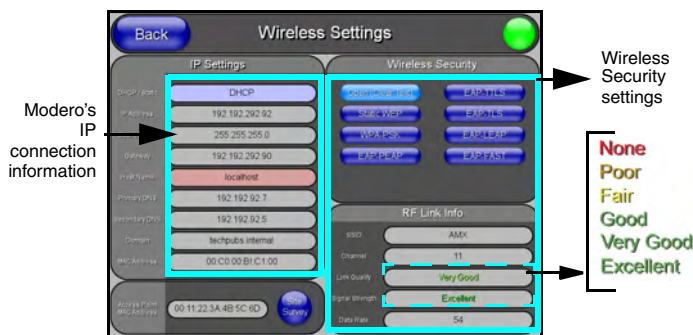


FIG. 11 Wireless Settings page

Note: Since the wireless card was replaced, all previous WAP security and communication parameters are no longer available and must be reset.

3. Toggle the **DHCP/Static** field (from the IP Settings section) until the choice cycles to **DHCP**. Except for the **Host Name**, all other fields are then greyed-out.
4. Press the optional **Host Name** field to open an on-screen Keyboard and enter the Host Name information.
5. Press **Done** after you're finished assigning the alpha-numeric string.
6. Do not alter any of the remaining greyed-out fields in the IP Settings section. Once the panel is rebooted, these values are obtained by the unit and displayed in the **DNS** fields after power-up.

Note: This information can be found in either the **Workspace - System name > Define Device** section of your code (that defines the properties for your panel), or in the **Device Addressing/Network Addresses** section of the **Tools > NetLinX Diagnostics** dialog.

7. From within the **Wireless Security** section, press/toggle On the **Open (Clear Text)** button. By default, this field displays an SSID entry of **AMX**.
8. From within the **Open (Clear Text) Settings** page, press the red **SSID** field to display the **Network Name (SSID)** keyboard and enter the SSID name assigned to the target WAP (**case sensitive**).
 - The card should be given the SSID used by the target WAP. If this field is left blank, the unit will attempt to connect to the first available WAP. By default, all WAP250Gs use **AMX** as their assigned SSID value.
 - One of the most common problems associated with connection to a WAP arise because the SSID was not entered properly. You must maintain the same case when entering this information. **ABC is not the same as Abc**.
9. Press the **Done** button when complete. **Do not leave this field blank**.
10. From the **Open (Clear Text) Settings** page, press the **Save** button to incorporate your new information into the panel and begin the communication process.
11. From within the **RF Link Info** section, verify the SSID name has properly been entered and stored.
12. Verify the **IP Settings** section fields have been properly set.
13. Press the **Back** button to navigate to the **Protected Setup** page.
14. Press the on-screen **Reboot** button to both save any changes and restart the panel. **Remember that you will need to navigate to the System Settings page and configure the connection to a target Master.**
15. After the panel restarts, return to the **Wireless/Secondary Connection** page to verify the **Link Quality** and **Signal Strength**:
 - The descriptions are: **None, Poor, Fair, Good, Very Good, and Excellent**.

Note: Use of the following encryption methods require the upload of a secured certificate to the target panel prior to usage: **EAP-PEAP, EAP-TTLS, EAP-TLS, EAP-FAST**.

Secure Panel Access using a Static IP Address

By default, wireless Modero panels are configured for unsecured communication to a WAP. To properly setup both a WAP250G and panel for secure communication, you must first prepare the Modero panel and then use the information given to fill out the fields within the WAP's browser-based **Basic Wireless Configuration** page. Although a **DHCP Address** can be used to configure a secure connection, it can become more difficult to connect to a WAP using a **Dynamic IP Address** if for some reason that device has lost its last address from the **DHCP Server**. Using a **pre-reserved IP Address (Static)** can provide the user with a consistent IP Address for connection to the target WAP.

These procedures outline the process of configuring a secure **Static** connection to a target **NXA-WAP250G** using a **WEP 128-bit encryption method (Static WEP)**. The new **NXA-WC80211GCF** card provides additional methods which are discussed in more detail within the specific panel's instruction manual.

Step 1: Setup a Static IP Connection

1. Cycle power to the panel (this allows a detection of the new internal wireless card).
2. Press the **Protected Setup** button (located on the lower-left of the panel page) to open the Protected Setup page and display an on-screen keypad.
3. Enter **1988** into the Keypad's password field and press **Done** when finished.
4. Press the **Wireless Settings** button (located on the lower-left) to open the Wireless Settings page.

Note: Check with your System Administrator for a pre-reserved **Static IP Address** assigned to the panel. This address must be obtained before **Static** assignment of the panel continues.

5. Toggle the **DHCP/Static** field (from the **IP Settings** section) until the choice cycles to **Static**. The **IP Address**, **Subnet Mask**, and **Gateway** fields then become user-editable (red).
6. Press the **IP Address** field to open an on-screen Keyboard and enter the **Static IP Address (provided by your System Administrator)**.
7. Press **Done** after you are finished entering the IP information.
8. Repeat the same process for the **Subnet Mask** and **Gateway** fields.

9. Press the optional *Host Name* field to open an on-screen Keyboard and enter the Host Name information.
10. Press **Done** after you are finished assigning the alpha-numeric string of the host name.
11. Press the *Primary DNS* field to open an on-screen Keyboard, enter the Primary DNS Address (*provided by your System Administrator*) and press **Done** when complete. Repeat this process for the *Secondary DNS* field.
12. Press the *Domain* field to open a Keyboard, enter the resolvable domain Address (*this is provided by your System Administrator and equates to a unique Internet name for the panel*), and press **Done** when complete.
13. Setup the security and communication parameters between the wireless card and the target WAP by configuring the Wireless Settings section on this page (Step 2).

Step 2: Configure a Secure Connection to your WAP250G

Since the code key generator on Modero panels use the same key generation formula, all panels generate identical keys for the same Passphrase. The generators used on WAPs will not produce the same key as the Modero generator even if you use the same Passphrase.

For this reason, we recommend FIRST creating the Current Key on the Modero and then entering that information into the appropriate WAP250G fields.

1. Repeat the first four actions from the preceding Step 1 to open the Wireless Settings page and then locate the Wireless Settings section (FIG. 12).

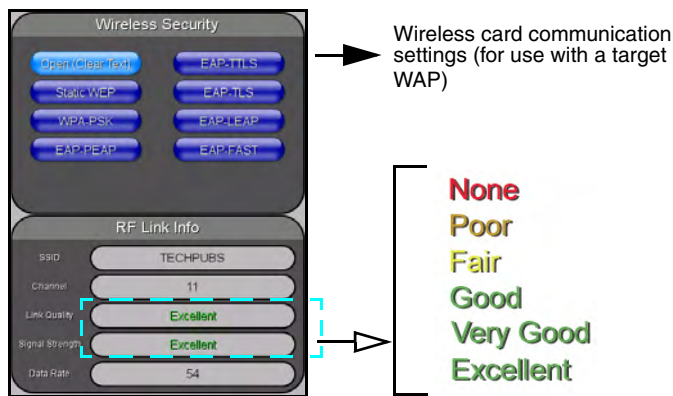


FIG. 12 Wireless Security section

Note: You must first take the SSID name, Current Key string value, and panel MAC Address information and then later enter it into the appropriate WAP dialog fields in order to "sync-up" the secure connection. These values must be identically reproduced on the target WAP.

2. From within the Wireless Security section, press the **Static WEP** button to open the on-screen Static WEP Settings window (FIG. 13).

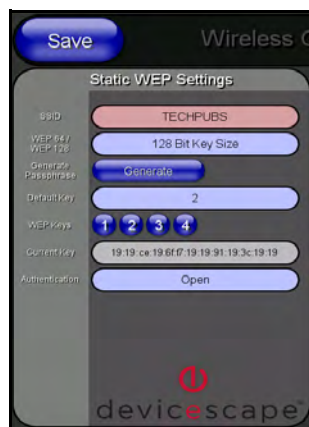


FIG. 13 Static WEP Settings window

3. Touch the red *SSID* field and from the Network Name (SSID) keyboard, enter the SSID name you are using on your target Wireless Access Point (**case sensitive**) and then press **Done**.

- The card should be given the SSID used by the target WAP. If this field is left blank, the unit will attempt to connect to the first available WAP. By default, all WAP250Gs use AMX as their assigned SSID value.
 - One of the most common problems associated with connection to a WAP arise because the SSID was not entered properly. You must maintain the same case when entering the SSID information. **ABC is not the same as Abc.**
4. Toggle the blue *WEP 64/WEP128* field until it reads **64 Bit Key Size** or **128 Bit Key Size**. The 64/128 selection reflects the bit-level of encryption security. This WEP encryption level must match the encryption level being used on the WAP.

Note: WEP will not work unless the same Default Key is set on both the panel and the Wireless Access Point.

For example: if you have your Wireless Access Point set to default key 4 (which was 01:02:03:04:05), you must set the panel's key 4 to 01:02:03:04:05.

5. Toggle the *Default Key* field until the you've chosen a WEP Key value (from **1- 4**) that matches what you'll be using on your target WAP250G. These WEP Key identifier values must match for both devices.
6. With the proper WEP Key value displayed, press the **Generate** button to launch the WEP Passphrase keyboard. This keyboard allows you to enter a Passphrase (such as **AMXPanel**) and then automatically generate a WEP key which is compatible only among all Modero panels.
7. Within this on-screen WEP Passphrase keyboard, enter a character string or word (such as **AMXPanel**) and press **Done** when you have finished.
 - As an example, enter the word **AMXPanel** using a 128-bit hex digit encryption. After pressing Done, the on-screen Current Key field displays a long string of characters (separated by colons) which represents the encryption key equivalent to the word **AMXPanel**.
8. Write down this Current Key string value for later entry into your WAP's WEP Key field (**typically entered without colons**) and into other communicating panel's Current Key field.
9. Leave the *Authentication* field reading **Open** (default).
10. Press the **Save** button to store this configuration and return to the previous Wireless Settings page.
11. Press the **Back** button to navigate to the Protected Setup page and press the on-screen **Reboot** button to both save any changes and restart the panel. Remember that you will need to navigate to the System Settings page and configure the connection to a target Master.