

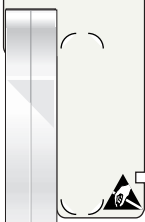
DS3 MODULE

CLEI: SLPOCD0C_



DS3
1200333L1

- ONLINE
- STATUS
- DS3



FRONT PANEL LEDs

- | | | |
|---------------|--|--|
| ONLINE | <input type="radio"/> Off | Blown fuse or no power supplied to the shelf |
| | <input checked="" type="radio"/> Green | Online |
| | * Flashing Green | Offline |
| | <input checked="" type="radio"/> Amber | Self-test in progress |
| | <input checked="" type="radio"/> Red | Module failure |
| | * Flashing Red | Self-test failure |
| STATUS | <input checked="" type="radio"/> Green | Active DS3 Module |
| | * Flashing Green | Standby DS3 - redundancy enabled |
| | * Flashing Red | Standby DS3 - cannot automatically become the active DS3 while the current active DS3 is installed |
| DS3 | <input type="radio"/> Off | DS3/DS1 not configured for use |
| | <input checked="" type="radio"/> Green | DS3/DS1 signal present and synchronized; channel is configured for use |
| | <input checked="" type="radio"/> Amber | DS3/DS1 test in progress (includes port self-test) |
| | <input checked="" type="radio"/> Red | DS3/DS1 alarm present |
| | * Flashing Red | DS3/DS1 error |

NOTE: The Total Access 4303 DS3 Module requires SCU firmware of C.02 or greater.

INSTALLATION

- Insert the module into the desired slot (1 through 4 only) (hot insertion permissible).
- The module connects to connectors on the backplane. Connecting the BNC Module (P/N 1200323L1) to the connectors provides two dual BNC connectors (see the BNC Module Job Aid, 61200323L1-22).
- The Total Access® 4303 SCU automatically detects the presence of the module. There is no need to reboot.
- Once installed, use the terminal menus to configure and control the module (see the SCU Job Aid, 61200334L1-22).
- Use the arrow keys on the VT100 terminal keyboard to move to the Modules menu; press ENTER in the Menu column of the appropriate module.

SPECIFICATIONS

Specifications	
Framing	M13 or C-Bit Parity
Line Coding	B3ZS (bipolar 3 zero substitution)
Line Build Out	0 to 50 feet (Short)
	51 to 450 feet (Long)
Tests	Self-test
	Local Line and Payload Loopbacks
	Remote Line and Payload Loopbacks
Line Rate	44.736 Mbps ± 895 bps
Terminating Impedance	75 ohms ± 5%, unbalanced
Power	12 watts
Compliance	FCC Part 15, UL 60950, NEBS Level 3
Temperature	Operation: 0°C to 50°C
	Storage: -40°C to 70°C
Relative Humidity	To 95% noncondensing

COMPLIANCE

The Total Access 4303 DS3 module is NRTL listed to the applicable UL standards. The Total Access DS3 is to be installed in a restricted access location and in a Type "B" or "E" enclosure only.

Code	Input	Output
Power Code (PC)	F	C
Telecommunication Code (TC)	-	-
Installation Code (IC)	A	-

This device complies with Part 15 of the FCC rules. Operation is subject to the following two conditions: (1) This device may not cause harmful interference, and (2) this device must accept any interference received, including interference that may cause undesired operation.

Changes or modifications not expressly approved by ADTRAN could void the user's authority to operate this equipment.

WARRANTY

ADTRAN will replace or repair this product within the warranty period if it does not meet its published specifications or fails while in service. Warranty information can be found at www.adtran.com/warranty. U.S. and Canada customer Faxback: 877-457-5007, Document 414.



MENU TREE FOR THE DS3 MODULE TERMINAL MENUS

