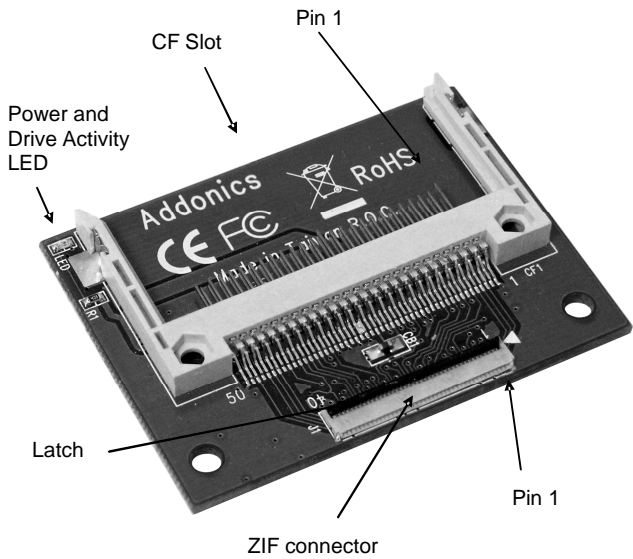


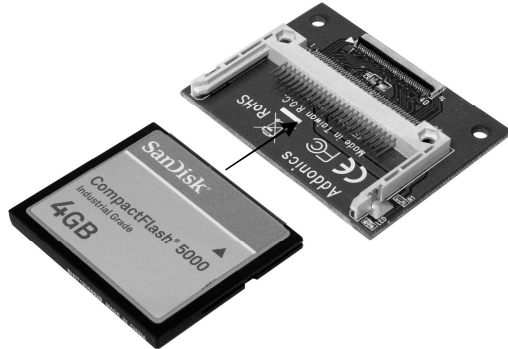
ADDONICS TECHNOLOGIES

Model: ADZIFCF

Installation Guide



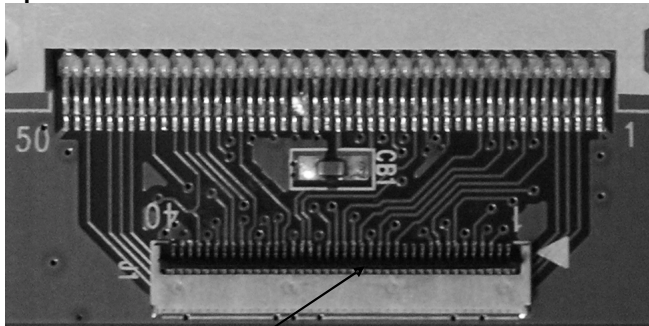
1. Insert the desired Compact Flash into the Addonics 1.8" ZIF - CF Adapter (ADZIFCF). The Compact Flash should be keyed to prevent the card from being incorrectly inserted.



2. Put the mechanism in the open position and slide the flat ribbon cable into the ZIF connector on the adapter.
3. Close the latch to secure the ribbon cable connection.

Locking Mechanism on ZIF Connector

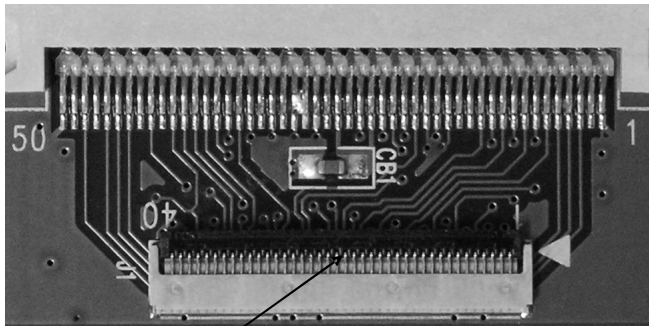
Open Position:



Latch

The locking mechanism on the ZIF connector is in the **open position** if the latch faces **vertical**.

Close Position:



Latch

The locking mechanism on the ZIF connector is in the **close position** if the latch faces **horizontal**.

Note: Instructions can be found on the FAQ section.

1.8" ZIF- CF adapter shown below attached to a 1.8" ZIF to 2.5" IDE converter



1.8" ZIF- CF adapter shown below connected to a 2.5" drive enclosure



TECHNICAL SUPPORT

Email: <http://www.addonics.com/sales/query/>
Internet: <http://www.addonics.com>

Technical Support (8:30 am to 6:00 pm PST)
Phone: 408 433-3855
Email: <http://www.addonics.com/support/query/>