

# **Web Tablet**

## **Getting Started**

# **What's in the Box?**

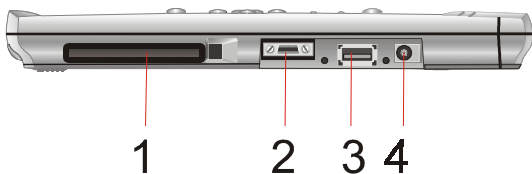
Congratulations on purchasing the Web Tablet. Before you start, check that your package contains the following items (items included vary by model number purchased):

1. Web Tablet
2. Battery Pack
3. AC Adapter
4. Power Cord
5. Synchronization Cable
6. Mini-VGA Cable
7. Stylus
8. Quick Guide
9. Utility CD
10. ActiveSync 3.1 CD (Optional)
11. Cradle (Optional)
12. USB Synchronization Cable (With Cradle)

# Features at a Glance

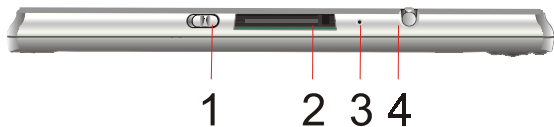
## Left Side

1. PCMCIA slot
2. Mini-VGA connector
3. USB connector
4. DC in



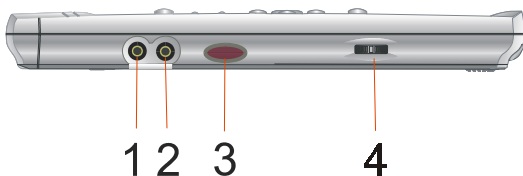
## Top

1. On/Suspend switch
2. CompactFlash card slot
3. Software reset button
4. Stylus storage



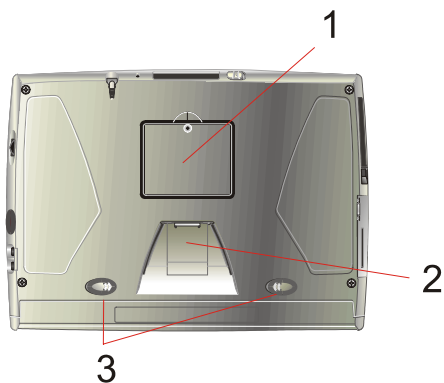
## Right Side

1. External microphone jack
2. External speaker jack
3. Infrared port
4. Page up/down dial



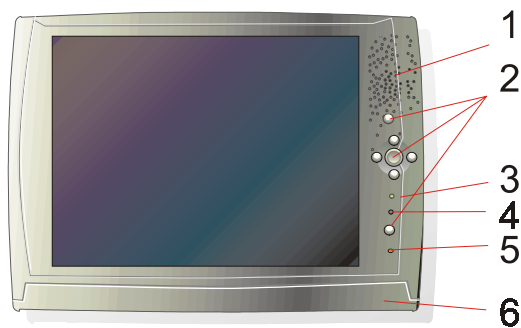
## Back

1. Cover to hardware reset button
2. Cradle dock / synchronize cable port
3. Battery latches



## Front

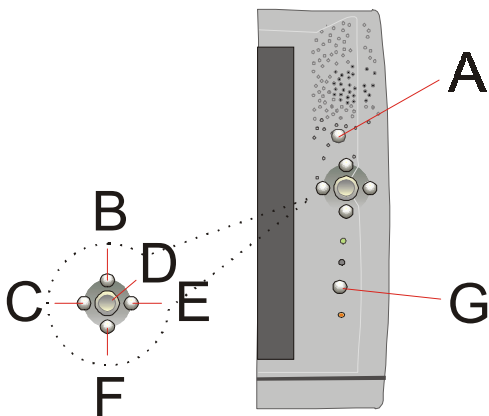
1. Speakers
2. Control Buttons
3. Power indicator
4. Battery indicator
5. Internal microphone
6. Battery pack



## Web Tablet Buttons

The buttons on the right of your web tablet's screen give you greater navigational control.

The BCEF buttons function as arrow keys, but can also be used as a mouse. The BCDEF buttons all resume the web tablet from 'Suspend' mode.



- A:** Launch Dial button – opens the Launch Dial Program
- B:** move cursor up or mouse function up
- C:** move cursor left or mouse function left
- D:** launches last program; acts as right click button or enter key

- E:** move cursor right or mouse function right
- F:** move cursor down or mouse function down
- G:** toggles between arrow key functions and mouse functions

The **Power On/Suspend switch** on the top of your web tablet, when in the “Suspend” position, ensures that the web tablet isn’t accidentally turned on. Sliding the switch to the “On” position resumes your web tablet.

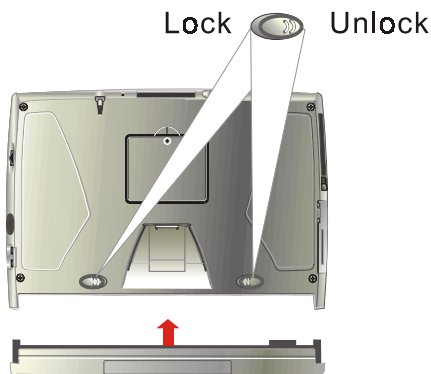
The **Page up/down switch** on the right side of your web tablet lets you easily scroll pages, including web sites and documents.



# Hardware Installation

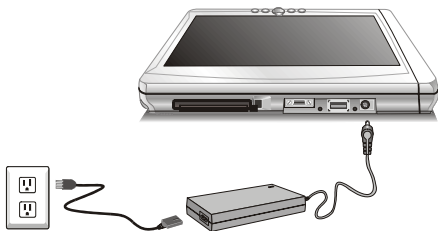
## Step1

Move the battery latch to Unlock and plug your battery pack to the system.

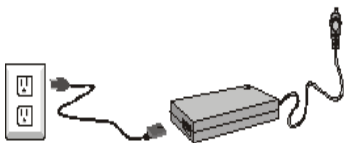


## Step2

Connect one end of the Power Cord to the AC adapter and the other end to a power outlet. Connect the AC adapter cable to the DC in port and charge the battery for at least 12 hours.



If you have the Cradle for Web Tablet, you could also plug your Tablet on the Cradle to charge.



### **Step3**

Press the power button and now you could enjoy the convenience brought by the Web Tablet.

# Synchronization

## Software Installation

Synchronization is the process of exchanging information between your desktop computer and your Web Tablet so that you have the latest information in both locations.

This guide will help direct you through the installation process for the Web Tablet synchronization software.

**Note:** Do not plug in the Web Tablet USB Sync cable into your host system prior to synchronization software installation. This guide will inform you of the proper point in the procedure to connect your USB cable.

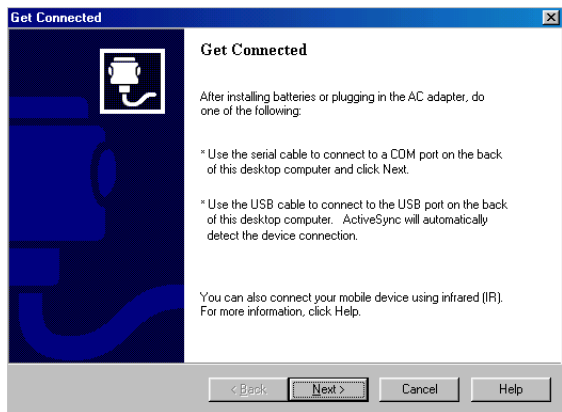
### Installing the ActiveSync Software

**Note:** If there is not the ActiveSync 3.1 CD in your accessory box, please download this software from [http://www.microsoft.com/mobile/downloads/active\\_sync.asp](http://www.microsoft.com/mobile/downloads/active_sync.asp) first.

Run the msasync.exe after downloading or insert the

Microsoft ActiveSync 3.1 CD-ROM into the CD-ROM drive of your host system. The Set Up Microsoft ActiveSync 3.1 screen will appear.

1. In the **Set Up Microsoft ActiveSync 3.1** screen, click **Next**. The **Select Installation Folder** screen will appear.
2. Click **Next** in the **Select Installation Folder** screen. ActiveSync will be placed into the Program Files on your host PC. The **get Connected** screen will then appear:



### 3. Connecting the Cable

- If using the Web Tablet USB Synchronization Cable – connect the cable into your Host PC and into your Web Tablet.
- If using the Web Tablet Cradle – connect the Type B USB connector to the back of the Cradle and connect the Type A USB connector to the Host PC.

4. After connecting the cable, click **Next** on the **Get Connected** screen. The **Get Connected** screen will disappear. After approximately 20 seconds, the ActiveSync utility will launch then the **Set Up a Partnership** screen will appear.
5. Click **Next** in the **Set Up a Partnership** screen. (**Setting up a Partnership** is the default configuration.) The **Select Synchronization Settings** screen will appear.
6. In the **Select Synchronization Settings** screen, Click **Next**. (There is no need to add checks to the boxes displayed here.) The **Setup Complete** screen will appear.
7. In the **Setup Complete** screen, click **Finish**.

The **Microsoft ActiveSync 3.1 synchronization** software has now been installed on the host PC.

## Installing Microsoft Outlook 2000

**Outlook 2000** is required on your host PC in order to transfer e-mail & PIM information to and from Web Pad.

Please make sure you have installed Microsoft Outlook 2000 before installing OnSchedule Sync.

## Installing the OnSchedule Sync

1. Insert the Utility CD into the CD-ROM drive of your host system. An installation menu will appear.
2. Click **Install Pocket OnSchedule Sync**. The **On-Schedule Sync** screen will appear.
3. In the **Welcome** screen, click **Next**. The **License Terms** screen will appear.
4. After reading the License Terms, check the checkbox then click **Next**. The **Choose Destination Location** screen will appear.
5. Default is the recommended option on the **Choose Destination Location** screen. Click **Next**. The **Select Components** screen will appear.
6. Select the defaults in the **Select Components** screen then click **Next**. The Start Installation notice will appear.
7. To start Installation, Click **Next**.
8. After a few seconds installation, the **Installation Complete** screen will appear.
9. In the **Installation Complete** screen, Click **Finish**.

The **Pocket OnSchedule Sync** has been installed on the host PC.