

SONY®

4-668-080-11 (1)

Wireless LAN Card

Operating Instructions

CLiÉ
GEAR

PEGA-WL100

© 2002 Sony Corporation

Owner's Record

The model number and serial number are located at the rear of the product. Record the model number and the serial number in the space provided below. Refer to them whenever you call upon your Sony dealer regarding this product.

Model Number : PEGA-WL100

Serial Number : _____

For the customers in USA and Canada :

NOTICE

This equipment has been tested and found to comply with the limits for a Class B digital device, pursuant to part 15 of the FCC Rules. These limits are designed to provide reasonable protection against harmful interference in a residential installation.

This equipment generates, uses and can radiate radio frequency energy and, if not installed and used in accordance with the instructions, may cause harmful interference to radio communications.

However, there is no guarantee that interference will not occur in a particular installation. If this equipment does cause harmful interference to radio or television reception, which can be determined by turning the equipment off and on, the user is encouraged to try to correct the interference by one or more of the following measures:

- Reorient or relocate the receiving antenna.
- Increase the separation between the equipment and receiver.
- Connect the equipment into an outlet on a circuit different from that to which the receiver is connected.
- Consult the dealer or an experienced radio/TV technician for help.

FCC WARNING

Changes or modifications not expressly approved by the party responsible for compliance could void the user's authority to operate the equipment.

Declaration of Conformity

Trade Name : SONY
Model No. : PEGA-WL100
Responsible Party : Sony Electronics Inc.
Address : 1 Sony Drive, Park Ridge, NJ 07656 USA
Telephone No. : 201-930-6972

This device complies with part 15 of the FCC Rules.

Operation is subject to the following two conditions:

- (1) This device may not cause harmful interference, and
- (2) this device must accept any interference received, including interference that may cause undesired operation.

FCC Radiation Exposure Statement:

This transmitter complies with FCC radiation exposure limits set forth for an uncontrolled environment. To comply with the FCC RF exposure compliance requirements, no change to the antenna or the device is permitted. Any change to the antenna or the device could result in the device exceeding the RF exposure requirements and void user. In addition, this transmitter must not be co-located or operating in conjunction with any other antenna or transmitter.

The term "IC:" before the radio certification number only signifies that Industry Canada technical specifications were met.

Operation is subject to the following two conditions: (1) this device may not cause interference, and (2) this device must accept any interference, including interference that may cause undesired operation of the device.

L'utilisation de ce dispositif est autorisée seulement aux conditions suivantes: (1) il ne doit pas produire de brouillage et (2) l'utilisateur du dispositif doit être prêt à accepter tout brouillage radioélectrique reçu, même si ce brouillage est susceptible de compromettre le fonctionnement du dispositif.

To prevent radio interference to the licensed service, this device is intended to be operated indoors and away from windows to provide maximum shielding. Equipment (or its transmit antenna) that is installed outdoors is subject to licensing.

Pour empêcher que cet appareil cause du brouillage au service faisant l'objet d'une licence, il doit être utilisé à l'intérieur et devrait être placé loin des fenêtres afin de fournir un écran de blindage maximal. Si le matériel (ou son antenne d'émission) est installé à l'extérieur, il doit faire l'objet d'une licence.

This Class B digital apparatus complies with Canadian ICES-003.

Cet appareil numérique de la classe B est conforme à la norme NMB-003 du Canada.

For the customers in European countries :

Sony hereby declares that this product is in compliance with the essential requirements and other relevant provisions of European Directive 1999/5/EC.

In some countries the use of the Wireless LAN Card is restricted. Before using it, make sure you read the regulation leaflet of this product.

Warnings

- In some situations or environments, the use of the IEEE 802.11b technology might be restricted by the proprietor of the building or responsible representatives of the organization, for example on board of airplanes, in hospitals or in any other environment where the risk of interference with other devices or services is perceived or identified as harmful.
- If you are uncertain about the policy applying to the use of IEEE 802.11b technology in a specific organization or environment, you are encouraged to first ask for authorization prior to switching it on.
- Consult your physician or the manufacturer of personal medical devices (pacemakers, hearing aids, etc.) regarding any restrictions on the use of IEEE 802.11b technology.

- Sony, **SONY**, CLIÉ, **CLIÉ**, CLIÉ GEAR, **CLIÉ GEAR**, **VAIO**, Jog Dial and Memory Stick are trademarks of Sony Corporation.
- Palm OS and HotSync are registered trademarks of Palm, Inc. or its subsidiaries. Palm Desktop and HotSync logo are trademarks of Palm, Inc. or its subsidiaries.
- Microsoft, Windows and Windows NT are registered trademarks of Microsoft Corporation in the United States and/or other countries.
- Adobe and Adobe Acrobat Reader are trademarks of Adobe Systems Incorporated.
- All other names of systems, products and services are trademarks of their respective owners. In the manual, the TM or ® marks are not specified.

Before using the PEGA-WL100, be sure to read the End User Software License Agreement that accompanies it.

- Copyright laws prohibit reproducing the software or the manual accompanying it in whole or in part, or renting the software without the permission of the copyright holder.
- In no event will SONY be liable for any financial damages, or loss of profits, including claims made by third parties, arising out of the use of the software supplied with this unit.
- If a problem occurs with this product as a result of defective manufacturing, SONY will replace it. However, SONY bears no other responsibility.
- The software provided with this unit cannot be used with other units.
- Please note that, due to continued efforts to improve quality, the software specifications may be changed without notice.
- Operation of this unit with software other than that provided is not covered by the warranty.

Table of Contents

Introduction	7
Names of Parts	9
Inserting/Removing the Wireless LAN Card	10
Installing the Software	12
Performing Communications via a Wireless LAN Access Point (Infrastructure Mode)	14
Basic Settings	14
Advanced Settings	20
Connecting your CLIÉ Handheld to a Wireless LAN	21
Performing Communications Directly between your CLIÉ Handheld and Another Device on a Wireless LAN (Ad-Hoc Mode)	23
Basic Settings	23
Connecting your CLIÉ Handheld to Another Device on a Wireless LAN	30
Performing a HotSync Operation via a Network with a Wireless LAN Card	32
Troubleshooting	34
Precautions on Use	37
Specifications	38

Introduction

This product is a Wireless LAN Card for the Sony Personal Entertainment Organizer (mentioned as CLIÉ handheld after this) of the Palm OS 5 (ver5.0).

This product complies with IEEE 802.11b* and allows you to access the Internet wirelessly in locations where there is a Wi-Fi certified wireless LAN access point.

* Wi-Fi certified.

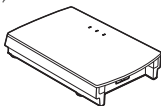
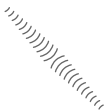
Performing a HotSync operation

You can perform a HotSync operation via a network (synchronize data wirelessly) between your CLIÉ handheld and a personal computer. For details on HotSync operation, see the Operating Instructions of your CLIÉ handheld.

PEGA-WL100 and CLIÉ handheld



Personal computer

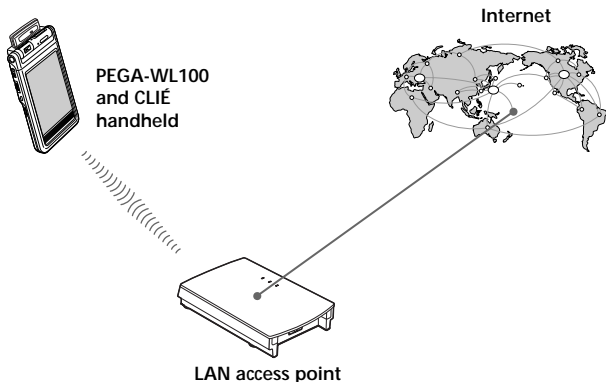


LAN access point

Continued on next page

Accessing the Internet

You can access the Internet from your CLIÉ handheld in which this Wireless LAN card is inserted through a LAN access point, and enjoy browsing various websites or sending/receiving email.



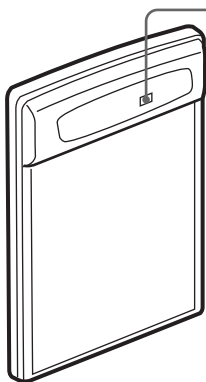
Notes

- To access the Internet through a LAN access point, you need to be a subscriber to a telecommunications company and an Internet Service Provider (ISP) in advance.
- You may need a personal computer to set a wireless LAN. For details, see the Operating Instructions of your wireless LAN access point.

Names of Parts

Wireless LAN Card

Front

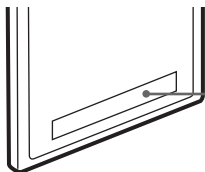


LED indicator

Blinks slowly while your CLIÉ handheld is connected to an access point, etc.

Blinks rapidly during data transfer. (Flashing speed varies depending on the amount of data being transferred). Does not blink when your CLIÉ handheld is not connected to an access point, etc.

Rear



MAC Address

This address may be used by your System Administrator.

Other items included

- CD-ROM (1)
- Hard case (1)
- Operating Instructions (1)
- Warranty card (1)
- End-User's License Agreement (1)

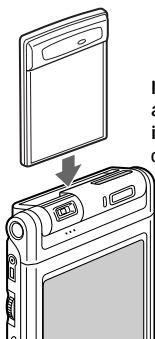
Inserting/Removing the Wireless LAN Card

Inserting the Wireless LAN card in your CLIÉ handheld

Insert the Wireless LAN card in Wireless Communication Slot of the CLIÉ handheld.

Notes

- Insert the Wireless LAN card straight in Wireless Communication Slot of the CLIÉ handheld.
- Do not insert the Wireless LAN card in the wrong way. Forcing it in the wrong way will damage it and cause a malfunction.
- You may be unable to use the Wireless LAN card when the remaining power of the battery in the CLIÉ handheld is low. Before using, charge the battery fully.



Insert the Wireless LAN card all the way into the slot until it fully mates with the connector.

Removing the Wireless LAN card from your CLIÉ handheld

After use, terminate communications. Then, pull the wireless LAN card up straight.

When using this Wireless LAN card with a Flip&Rotate style CLIÉ handheld

Do not rotate the display when the wireless LAN card is inserted in the Wireless Communication Slot of the CLIÉ handheld. This may press the display panel against the Wireless LAN card and cause a malfunction.

Note

During communication, do not remove the Wireless LAN card or subject the CLIÉ handheld to excessive shock.

Installing the Software

When you try to perform wireless LAN communications for the first time after inserting the Wireless LAN card in your CLIÉ handheld, you need to install the Wireless LAN utility in your CLIÉ handheld. You can install the Wireless LAN utility by using the supplied CD-ROM.

Note

Before installation, it is necessary to have Palm Desktop for CLIÉ installed and to perform a HotSync operation. Connect the CLIÉ handheld to a Windows computer, using a cradle, etc. For details on how to connect the CLIÉ handheld to the computer, see the Operating Instructions of your CLIÉ handheld.

1 Perform a soft reset on your CLIÉ handheld.

For details on how to perform a soft reset, see the Operating Instructions of your CLIÉ handheld.

2 Insert the supplied CD-ROM in the CD-ROM drive of your Windows computer.

The installer starts and the initial screen appears.

Tip

If the installer does not start automatically, double-click [setup] (setup.exe) which can be found in the CD-ROM.

3 Proceed with the installation, following the installer's instructions.

On the user name selection screen, select a user's name.

Note

If you want to use more than one CLIÉ handheld, you need to install this utility in each CLIÉ handheld.


4 Click [Done] when the installer-closing screen appears.

Your computer is ready to install the Wireless LAN utility to your CLIÉ handheld. In the next step, you will perform a HotSync operation to carry out the installation.

5 Click the icon on the task tray that is located in the lower right corner of the Windows display on your computer.

Check that [Local USB] is ticked in the shortcut menu on the display.

Tip

If you cannot find the  icon on the task tray, click [Programs] ([All Programs] in Windows® XP), [Sony Handheld], and then [HotSync Manager] to start up the HotSync manager, from the [Start] menu.

6 Execute a local HotSync operation on your CLIÉ handheld.

The Wireless LAN utility is installed into your CLIÉ handheld.

Note

Part of this software application extends into the system of CLIÉ handheld. Therefore, it cannot be uninstalled.

After you perform a hard reset

Be sure to reinstall this utility.

After a hard reset, normally, the backup data in a personal computer is automatically restored to your CLIÉ handheld through a HotSync operation. However, this utility restores only the setting file when a HotSync operation is performed, and it does not restore the utility itself. Therefore, it is necessary to reinstall this utility after a hard reset.

Performing Communications via a Wireless LAN Access Point (Infrastructure Mode)

You can wirelessly access the Internet or perform communications with other communication device through a wireless LAN access point.

Basic Settings

Before setting

You first need to input a couple of values to set the wireless LAN access point you use. Check the following values in advance.

[NetworkID (SSID)]: It is also called ESS-ID or Network Name.

[WEP (Wired Equivalent Privacy)]: It is also called Encryption.

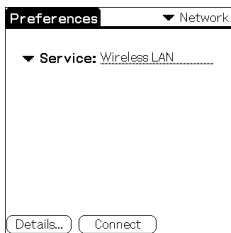
For details, ask your System Administrator. When you have a wireless LAN access point for your personal use, refer to the operating instructions of the wireless LAN access point.

Note

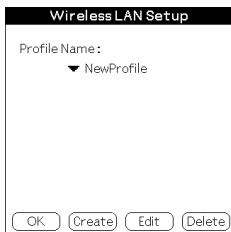
The Wireless LAN card uses the 1-11 channels (2.4 GHz band of frequencies). If your access point uses the 12-14 channels, it is impossible to perform communications using the Wireless LAN card.

- 1** Insert the Wireless LAN card in Wireless Communication Slot of your CLIÉ handheld.
- 2** Tap the [Prefs] icon on the home screen of your CLIÉ handheld.
The [Preferences] screen appears.
- 3** Tap ▼ in the upper right corner of the screen, and select [Network].
The [Network] screen appears.

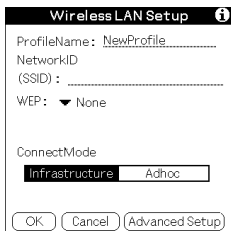
4 Tap ▼ of [Service], and select [Wireless LAN].



5 Tap [Details...] in the lower left corner of the screen.
The [Wireless LAN Setup] screen appears.



6 Tap [Create].
A new input screen of [Wireless LAN Setup] appears.



Check that [Infrastructure] is selected (highlighted) in [ConnectMode]. If it is not selected, tap [Infrastructure] to select it.

Continued on next page

Tip

Tapping the ⓘ mark in the upper right corner of the screen shows a brief explanation for the setting.

7 Enter a profile name in [ProfileName].

Specify a name freely according to the name of the other communication device, access point, etc.

Wireless LAN Setup ⓘ

ProfileName: Profile.1.....

NetworkID
(SSID):

WEP: ▼ None

ConnectMode

Infrastructure Adhoc

OK Cancel Advanced Setup

8 Enter a network ID in [NetworkID (SSID)].

Network ID (SSID) is fixed on the part of the access point you use. Be sure to enter the network ID (SSID) that is specified by your access point.

Wireless LAN Setup ⓘ

ProfileName: Profile.1.....

NetworkID
(SSID): Sony.....

WEP: ▼ None

ConnectMode

Infrastructure Adhoc

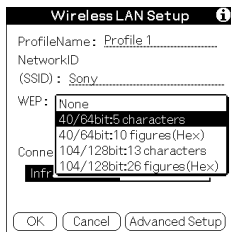
OK Cancel Advanced Setup

Note

Network ID is case-sensitive between capital letters and small letters. Be careful when entering a Network ID.

9 Select the encryption level in [WEP].

WEP (encryption level) is fixed depending on the access point you use. Be sure to select the encryption that is used by your access point.

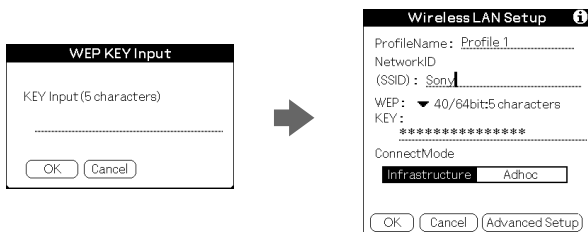


Tip

When you select [None] in [WEP], you do not need to enter a WEP key. In this case, skip the next step, and go to Step 11.

10 Enter a WEP key.

The WEP key is fixed, depending on the access point you use. Be sure to enter the WEP key that is specified by your access point.



When you select 40/64bit: alphanumeric string (5 characters)

Enter a 5-digit password using alphabet (a-z), numbers (0-9) and symbols.

When you select 40/64bit: hexadecimal notation (10 figures (Hex))

Enter a 10-digit password using alphabet (a-f) and numbers (0-9).

When you select 104/128bit: alphanumeric string (13 characters)

Enter a 13-digit password using alphabet (a-z), numbers (0-9) and symbols.

When you select 104/128bit: hexadecimal notation (26 figures (Hex))

Enter a 26-digit password using alphabet (a-f) and numbers (0-9).

Note

WEP key distinguishes between capital letters and small letters. Be careful when entering a WEP key.

Tips

- WEP key is the function that encrypts data that are to be sent by radio waves.
- Depending on the manufacturer, the above WEP keys may be assigned a different name.


11 Tap [OK].

The basic settings are completed by the profile name you set in Step 7.


12 Tap the  Home icon on your CLIÉ handheld.

The home screen appears.

Modifying the settings

- 1 Tap the [Prefs] icon on the home screen of your CLIE handheld.
The [Preferences] screen appears.
- 2 Tap ▼ in the upper right corner of the screen, and select [Network].
The [Network] screen appears.
- 3 Tap ▼ of [Service], and select [Wireless LAN].
- 4 Tap [Details...] in the lower left corner of the screen.
The [Wireless LAN Setup] screen appears.
- 5 Tap ▼ below [ProfileName], and select the profile name you want to modify.
- 6 Tap [Edit] at the bottom of the screen.
The [Wireless LAN Setup] input screen appears.
- 7 Modify the settings.
- 8 Tap [OK].
- 9 Tap the  Home icon.
The home screen appears.

Deleting the profile you have set

- 1 In Step 6 of "Modifying the settings" above, tap [Delete] at the bottom of the screen.
The selected profile is deleted.
- 2 Tap [OK].
- 3 Tap the  Home icon.
The home screen appears.

Note

Do not modify the settings while the Wireless LAN card is being connected to the wireless LAN access point.

Advanced Settings

Setting a network manually

When it is necessary to set a network IP address or DNS address, follow the procedure below.

- 1 Tap **[Advanced Setup]** in the lower right corner of the **[Wireless LAN Setup]** input screen.
- 2 Tap the checkbox of **[Auto]** in **[IP Address]** or **[DNS Address]**, and remove the tick.
The IP Address input screen or the DNS Address input screen appears.

Wireless LAN Setup

IP Address: Auto

SubnetMask

Gateway Address

DNS Address: Auto

PrimaryDNS

SecondaryDNS

PowerSaveMode: Enable

OK Cancel

- 3 Enter necessary addresses.
- 4 Tap **[OK]** when you complete the setting.

Disabling the power saving mode

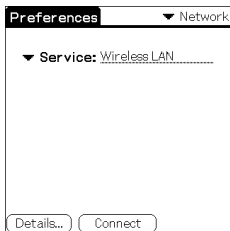
- 1 Tap **[Advanced Setup]** in the lower right corner of the **[Wireless LAN Setup]** input screen.
- 2 Tap the checkbox of **[Enable]** in **[PowerSaveMode]**, and remove the tick.
The power saving mode is disabled.

Tip

When the communication conditions are not good, you can disable the power saving mode to maximize the battery power and achieve better communications. However, it will make the battery life shorter. Normally, the power saving mode is recommended.

Connecting your CLIÉ Handheld to a Wireless LAN

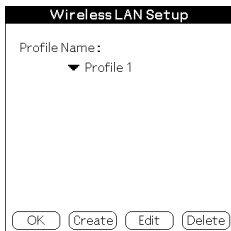
- 1** Insert the Wireless LAN card in Wireless Communication Slot of your CLIÉ handheld.
- 2** Tap the [Prefs] icon on the home screen of your CLIÉ handheld.
The [Preferences] screen appears.
- 3** Tap ▼ in the upper right corner of the screen, and select [Network].
The [Network] screen appears.
- 4** Tap ▼ of [Service], and select [Wireless LAN].



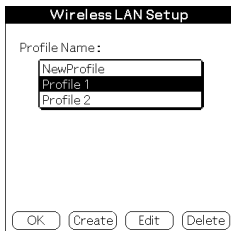
Tip

If you have set only one profile, go to Step 8.

- 5** Tap [Details...] in the lower left corner of the screen.
The [Wireless LAN Setup] screen appears.



- 6** Tap ▼ below [Profile Name], and select the profile name you want to use.



- 7** Tap [OK].
The [Preferences] screen appears again.

- 8** Tap [Connect] at the bottom of the screen.
Your CLIÉ handheld begins to connect to a wireless LAN.
When a connection is established, start up the application you like.

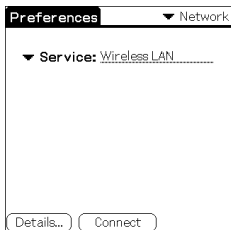
Performing Communications Directly between your CLIÉ Handheld and Another Device on a Wireless LAN (Ad-Hoc Mode)

Your CLIÉ handheld can communicate directly with another device on a wireless LAN without using a wireless LAN access point.

The Ad-hoc mode settings and communications require network knowledge.

Basic Settings

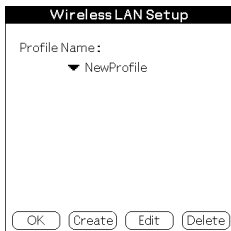
- 1** Insert the Wireless LAN card in Wireless Communication Slot of your CLIÉ handheld.
- 2** Tap the [Prefs] icon on the home screen of your CLIÉ handheld.
The [Preferences] screen appears.
- 3** Tap ▼ in the upper right corner of the screen, and select [Network].
The [Network] screen appears.
- 4** Tap ▼ of [Service], and select [Wireless LAN].



Continued on next page

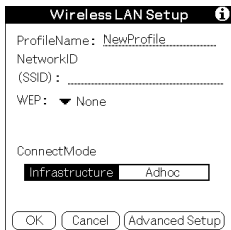
5 Tap [Details...] in the lower left corner of the screen.

The [Wireless LAN Setup] screen appears.



6 Tap [Create].

A new input screen of [Wireless LAN Setup] appears.

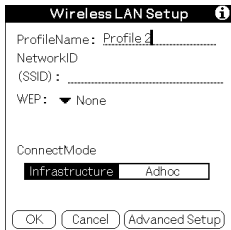


Tip

Tapping the **i** mark in the upper right corner of the screen shows a brief explanation for the setting.

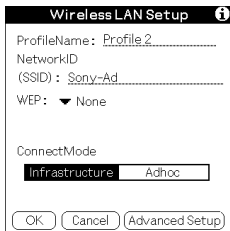
7 Enter a profile name in [ProfileName].

Specify a name freely according to the name of the other communication device, access point, etc.



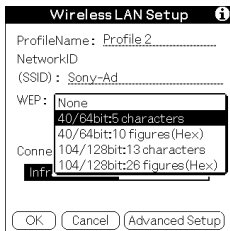
8 Enter a network ID in [NetworkID (SSID)].

Specify an alphanumeric string freely. The same network ID (SSID) needs to be entered in both your CLIÉ handheld and the other communication device.



9 Select the encryption level in [WEP].

Be sure to select the same encryption level for both your CLIÉ handheld and the other communication device.



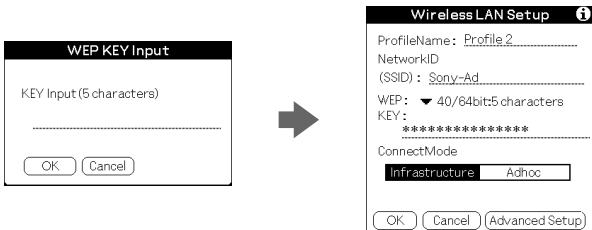
Tip

When you select [None] in [WEP], you do not need to enter a WEP key. In this case, skip the next step, and go to Step 11.

10 Enter a WEP key.

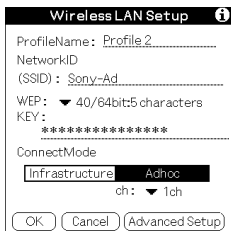
Be sure to enter the same WEP key in both your CLIÉ handheld and the other communication device.

For details on WEP key, see pages 17-18.



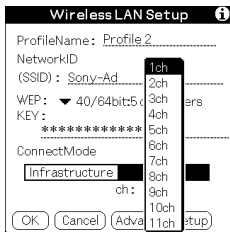
11 Tap [Adhoc] in [ConnectMode].

The Ad-hoc mode is selected as the connection type.



12 Tap ▼ of [ch] below [Adhoc], and select a channel.

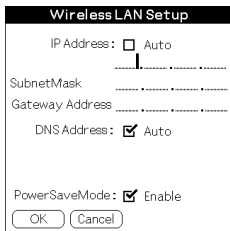
Be sure to select the same channel for both your CLIÉ handheld and the other communication device. Select a channel from 1 to 11.



13 Tap [Advanced Setup] in the lower right corner of the screen.

14 Tap the checkbox of [Auto] in [IP Address], and remove the tick.

The IP address input screen appears.



Note

Ad-hoc mode may not be established if "Auto" is checked.

The connection works only when both of the PC without DHCP and CLIÉ handheld select "Auto". Most of the time, user has to enter static IP on CLIÉ handheld for the Ad-hoc mode.

15 Enter an IP address and a sub-netmask.

Enter different IP addresses in your CLIÉ handheld and the other communication device.

Enter the same Subnet mask in your CLIÉ handheld and the other communication device.

(Eg.)

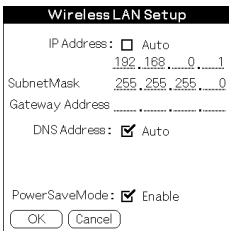
IP address

CLIÉ handheld: 192.168.0.1

Other device: 192.168.0.2

Subnet mask

CLIÉ handheld/other device:
255.255.255.0



Wireless LAN Setup

IP Address: Auto
192.168.0.1

SubnetMask 255.255.255.0

Gateway Address

DNS Address: Auto

PowerSaveMode: Enable

OK Cancel

Note

User has to find the Subnet mask from the PC that he/she wants to connect to. The following is referred to find Subnet mask on a PC.

Windows 98 and Windows ME:

From [Start] → [Run...] → type in 'winipcfg' → the [IP configuration] dialog box appears → check the IP address and Subnet mask.

Windows 2000 and Windows XP:

From [Start] → [Run...] → type in 'cmd' → type 'ipconfig/all' → check the IP address and Subnet mask.

Tip

Enter a gateway address if necessary. When it is necessary to enter a DNS address, tap and tick the checkbox of [Auto] in [DNS Address] before entering the DNS address.

16 Tap [OK].

The [Wireless LAN Setup] screen appears.


17 Tap [OK].

The settings are completed in the profile name you set in Step 7.


18 Tap the Home icon on your CLIÉ handheld.

The home screen appears.

Modifying the settings

- 1 Tap the [Prefs] icon on the home screen of your CLiE handheld.
The [Preferences] screen appears.
- 2 Tap ▼ in the upper right corner of the screen, and select [Network].
The [Network] screen appears.
- 3 Tap ▼ of [Service], and select [Wireless LAN].
- 4 Tap [Details...] in the lower left corner of the screen.
The [Wireless LAN Setup] screen appears.
- 5 Tap ▼ below [ProfileName], and select the profile name you want to modify.
- 6 Tap [Edit] at the bottom of the screen.
The [Wireless LAN Setup] input screen appears.
- 7 Modify the settings.
- 8 Tap [OK].
- 9 Tap the  Home icon.
The home screen appears.

Deleting the profile you have set

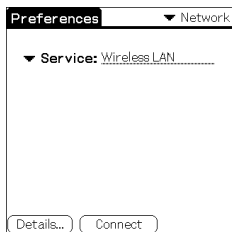
- 1 In Step 6 of "Modifying the settings" above, tap [Delete] at the bottom of the screen.
The [Delete Profile] confirmation dialog window appears.
- 2 Tap [OK] to confirm deletion or [Cancel] to cancel the deletion.
- 3 Tap the  Home icon.
The home screen appears.

Note

Do not modify the settings while the Wireless LAN card is being connected to the wireless LAN access point.

Connecting your CLIÉ Handheld to Another Device on a Wireless LAN

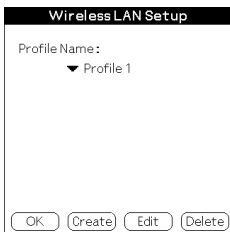
- 1** Insert the Wireless LAN card in Wireless Communication Slot of your compatible CLIÉ handheld.
- 2** Tap the [Prefs] icon on the home screen of your CLIÉ handheld.
The [Preferences] screen appears.
- 3** Tap ▼ in the upper right corner of the screen, and select [Network].
- 4** Tap ▼ of [Service], and select [Wireless LAN].



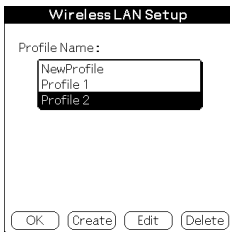
Tip

If you have set only one profile, go to Step 8.

- 5 Tap [Details...] in the lower left corner of the screen.**
The [Wireless LAN Setup] screen appears.



- 6 Tap ▼ below [Profile Name], and select the profile name you want to use.**





- 7 Tap [OK].**
The [Preferences] screen appears again.

- 8 Tap [Connect] at the bottom of the screen.**
Your CLIÉ handheld begins to connect to a wireless LAN.
When a connection is established, start up the application you like.

Performing a HotSync Operation via a Network with a Wireless LAN Card

This Wireless LAN card can be used in various ways. For example, you can perform a HotSync operation with a Windows computer via a wireless LAN. Follow the procedures below.



Preparing your computer

- 1 Click the  icon in the Windows task tray (bottom-right corner of the taskbar) and select [Network] from the shortcut menu.
- 2 Click the  icon in the Windows task tray again and select [Setup] from the shortcut menu.
The [Setup] screen is displayed.
- 3 Click the [Network] tab, then click the check box next to the user name for HotSync.
- 4 Click [TCP/IP Settings], and enter a Subnet Mask.
- 5 Click [OK].
- 6 Connect your CLIÉ handheld to your computer, and perform a HotSync operation.
The computer information is transferred to your CLIÉ handheld. When you perform a HotSync operation via a wireless LAN, your CLIÉ handheld identifies the computer based on the information transferred.

Preparing your CLIÉ handheld

Follow the steps below to set up your CLIÉ handheld for a HotSync operation via a wireless LAN.

- 1 Select [Wireless LAN] in [Service] on the [Network] screen of [Preferences], and select a profile name for a HotSync operation on the [Wireless LAN details] screen.
For details, see the Steps 1 to 6 of “Connecting your CLIÉ Handheld to a Wireless LAN” on pages 21 and 22.

- 2 Rotate the Jog Dial navigator to select HotSync and press the Jog Dial navigator on the Application Launcher screen.
The [HotSync] screen is displayed.
You can also tap the [HotSync] icon to display the HotSync screen.
- 3 Tap the  Menu icon, and tap [Primary PC Setup] from the [Option] menu.
- 4 Check that correct data is entered in [Primary PC Address] and [Subnet Mask(optional)], and tap [OK].
- 5 Tap the  Menu icon, and tap [Modem Sync Prefes] from the [Option] menu.
- 6 Tap [Network], and tap [OK].
- 7 When the HotSync screen appears, tap [Modem], and then tap [Select Service].
- 8 Tap ▼ of [Service], select [Wireless LAN], and tap [Done].

Tip

It is unnecessary to enter a telephone number in [Enter phone #].

Note

It is also necessary to select [Wireless LAN] in [Service] on the [Network] screen of the [Preferences] that can be started from the home screen.

Performing a HotSync operation

When you finish the preparation of your CLIÉ handheld and your computer, tap the [HotSync] icon on the [HotSync] screen. Your CLIÉ handheld automatically connects to the network and begins a HotSync operation.

When communication is not possible

Following the above Step 3, erase the [Primary PC Name].

Troubleshooting

If any problem occurs, for example, if communication is not possible, or if the unit does not operate normally, please check the points listed in this troubleshooting guide.

Visit Sony CLIÉ support website:

Customers in USA, Canada and Mexico:

<http://www.ita.sel.sony.com/support/clié/access/>

Customers in European Countries:

<http://www.clié-link.com/>

Customers in Asia-Pacific Countries:

<http://vaio-online.sony.com/clié/>

If the problem persists, contact the Sony dealer where you purchased this product or a Sony service representative serving your area.

Symptom	Cause/Remedy
Your CLIÉ handheld does not recognize this Wireless LAN card. (Although connection has started, the LED indicator on the Wireless LAN card does not flash.)	<ul style="list-style-type: none">• The Wireless LAN card is not installed correctly in your CLIÉ handheld. → Insert the Wireless LAN card into Wireless Communication Slot of your compatible CLIÉ handheld in the correct way until it fully mates with the connector.• A service other than [Wireless LAN] is selected in the [Network] of [Preferences]. → Select [Wireless LAN] in [Service].
You cannot connect your CLIÉ handheld to an access point.	<ul style="list-style-type: none">• A wrong profile is selected. → Check the [Profile Name] you have selected on the [Wireless LAN Setup] screen.• The settings for communications are not correct. → Check the settings of Network ID, WEP key, etc.

Symptom	Cause/Remedy
You cannot connect your CLIÉ handheld to an access point.	<ul style="list-style-type: none"> • Your CLIÉ handheld and the access point are placed too far apart. → Decrease the distance between them. • There is an obstacle that could block off radio waves (e.g., metal plate, concrete block) between your CLIÉ handheld and the access point. → Move your CLIÉ handheld and/or the access point to different places. → Disable the power saving mode. (This will increase the power consumption. Be careful of the remaining battery power). • The channels of the access point are not set at 1-11. → Change the channel setting of the access point.
You cannot access the Internet.	<ul style="list-style-type: none"> • The access point you are using is not configured for internet access. → Connect the access point to the Internet, following the operating instructions of the access point. • There is a mistake in the Network settings. → Ask your System Administrator about the settings.
The data transfer rate is slow.	<ul style="list-style-type: none"> • Some other access points are interfering with communication. → Change the channel number of the access point you are using. For details on how to change the setting, see the Operating Instructions of your access point. • The access point is being heavily used. → Wait a while and try access again.

Symptom	Cause/Remedy
The data transfer rate is slow.	<ul style="list-style-type: none"> • There is an obstacle that could block off radio waves (e.g., metal plate, concrete block) between your CLIÉ handheld and the access point. <ul style="list-style-type: none"> → Move your CLIÉ handheld and/or the access point to a different place. → Disable the power saving mode. (This will increase the power consumption. Be careful of the remaining battery power). • There is a device operating at the 2.4 GHz band of frequencies (microwave oven, Bluetooth-enabled device, etc.) around the CLIÉ handheld. <ul style="list-style-type: none"> → Increase the distance between the device and the CLIÉ handheld or turn off the power of the device.
You forget a WEP (encryption) key.	<ul style="list-style-type: none"> → After changing all the settings of the access point to its factory default setting, set the access point again. To restore the default settings, see the operating instructions of the access point.
You cannot send or receive email.	<ul style="list-style-type: none"> → Check the settings of the emailing software you are using. For details on how to set the emailing software, see its operating instructions.
You cannot perform a HotSync operation.	<ul style="list-style-type: none"> → Check the settings of HotSync. For details on how to set HotSync, see the operating instructions supplied with your CLIÉ handheld.
You cannot browse homepages.	<ul style="list-style-type: none"> → Check the settings of the web browser you are using. For details on how to set the web browser, see its operating instructions.

Tip

You can view the data of the communication preferences. While performing communications using your CLIÉ handheld in which this Wireless LAN card is inserted, show the [Network] screen of [Preferences]. Select [Option] on the menu, then select [View Log].

Precautions on Use

Handling this Wireless LAN Card

- Do not subject the card to excessive shock, and take care not to drop it to prevent malfunction.
- Do not use or store this unit in locations subject to:
 - extremely high temperature, such as in direct sunlight or near a heater.
 - excessive dust
 - high humidity
 - vibrations
 - poor ventilationIt may cause a malfunction.

- Do not use the card in a shaky, unstable place.
- Do not put a metal object such as a metal clip etc. inside the card.
- When inserting the card in the CLIÉ handheld, take care not to force it in the wrong way. It may cause a malfunction.
- When there is a device operating at the 2.4 GHz band of frequencies around the CLIÉ handheld, the card and the CLIÉ handheld may not work correctly.

Condensation

Condensation is a phenomenon that occurs when moisture in the air becomes water drops when it contacts a metal plate etc. Condensation may occur on the surface or inside of the Wireless LAN Card on occasions when you quickly move it from a cold place to a warm place, when you turn on the heater in the room on a cold, winter morning. Using the Wireless LAN Card with condensation on it may cause a malfunction. If condensation occurs on the Wireless LAN Card, leave it without turning on the power of the CLIÉ handheld until the condensation disappears.

Specifications

Power source

Powered by CLIÉ handheld

Power consumption

When transmitting: Approx. 560 – 920 mW (typ)*

Idle: Approx. 90 mW (typ)*

* At the default setting

(Note: The Wireless LAN card consumes no electricity when the LED indicator is off.)

Dimensions

Approx. $1 \frac{11}{16} \times 2 \frac{1}{4} \times \frac{1}{4}$ in. (width/length/thickness)

(42.8 × 55.4 × 5.9 mm)

Mass

Approx. 0.5 oz (14 g)

Maximum communication range¹⁾

Indoor: 300 ft. (90 m)

Outdoor: 1000 ft. (300 m)

Supported protocol

TCP/IP

Applied standard

IEEE 802.11b

Frequency band

2.4 GHz band (1 – 11 channels, ISM band)

WEP (data encryption)

128-bit/40-bit

Modulation method

DS-SS (in conformity to IEEE 802.11b)

Operating temperature

41 °F – 95 °F (5 °C – 35 °C)

¹⁾ Actual range will vary depending on factors such as obstacles between devices, magnetic fields around a microwave oven, static electricity, interference, radio wave conditions, reception sensitivity or antenna performance, or the operating system or software application, etc.

Design and specifications are subject to change without notice.

Customer Support

For the latest support information,
check our official Sony CLIE Web site

Customers in USA, Canada and Mexico:

<http://www.ita.sel.sony.com/support/clie/access/>

Customers in European Countries:

<http://www.clie-link.com/>

Customers in Asia-Pacific Countries

<http://vaio-online.sony.com/clie/>

<http://www.sony.net/>



Printed on 100% recycled paper using
VOC (Volatile Organic Compound)-free
vegetable oil based ink.