

## Locking Pin for TAA-Compliant 3-Series Patch Cables

### Lock down critical network ports on your 3-Series lockable patch cables.

Insert the optional Locking Pin into the patented locking boot to lock down ports.



#### Overview

Unlike traditional patch cables, TAA-compliant GigaTrue 3 CAT6 and CAT6A Patch Cables can provide a level of security directly at the port.

What's Included: (1) 10-Pack or 25-Pack Locking Pins

#### Installing the Pin

To lock the cable, first insert the cable into the port. Then insert the red Locking Pin all the way into the built-in locking tab on the cable boot. See Figure 1.

© Copyright 2013. Black Box Corporation. All rights reserved. Printed in U.S.A. Black Box® and the Double Diamond logo are registered trademarks of BB Technologies, Inc. Any third-party trademarks appearing in this publication are acknowledged to be the property of their respective owners.

Locking Pins for TAA-Compliant GigaTrue® 3 Patch Cables, Slimline, Lockable, version 2

Figure 1. Insert the red locking clip.



#### Removing the Pin

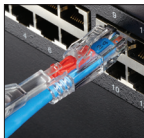
Figure 2. Insert tool tip under Locking.

Insert the tip of the Removal Tool under the Locking Pin.



Figure 3. Release the tool from the clip.

Gently pull back the Locking Pin. Lift up the Tool to release it from the Locking Pin.



#### Customer Support Information

Order toll-free in the U.S.: Call 877-877-BBOX (outside U.S. call 724-746-5500)  
FREE technical support 24 hours a day, 7 days a week: Call 724-746-5500  
or fax 724-746-0746, Mailing address: Black Box Corporation, 1000 Park Drive,  
Lawrence, PA 15055-1018, Web site: [www.blackbox.com](http://www.blackbox.com),  
E-mail: [info@blackbox.com](mailto:info@blackbox.com)