



UPort 1100 Series USB-to-Serial Adaptor Quick Installation Guide

Third Edition, January 2008

1. Overview

The UPort 1100 Series is part of Moxa's UPort Line of USB-to-Serial adaptors. The UPort product line provides a wide range of easy-to-use solutions for adding Windows COM ports and Linux tty ports through a PC's USB port. The UPort 1100 series includes the following models:

- UPort 1110: 1-port RS-232 USB-to-Serial Adaptor
- UPort 1130: 1-port RS-422/485 USB-to-Serial Adaptor
- UPort 1150: 1-port RS-232/422/485 USB-to-Serial Adaptor
- UPort 1150I: 1-port RS-232/422/485 USB-to-Serial Adaptor w/ Isolation Protection.

ATTENTION

Before plugging the adaptor into your computer's USB port, we recommend installing the driver first. Please refer to Section 3 for driver installation procedures.

After the driver is installed, the adaptor can be plugged into any upstream type A USB port, either on a PC host or on an upstream hub. The adaptor is hot-pluggable, so there is no need to power down your computer prior to installation. The **Found New Hardware** wizard will automatically locate the appropriate drivers, and various windows will appear as the adaptor is being installed.

After the **Found New Hardware** wizard finishes installing the adaptor, the Windows Device Manager may be used to modify the settings for the new COM port. The new COM port will be listed under Ports (COM & LPT) and the new adaptors will be listed under Multi-port serial adaptors. For more information about port configuration, please refer to the UPort 1100 Series user manual.

P/N: 1802011002010

2. Package Checklist

Before installing the adaptor, please verify that the package contains the following items:

- UPort 1100 Series USB-to-Serial Adaptor
- UPort Documentation and Software CD-ROM
- UPort 1100 Series Quick Installation Guide
- 5-year Warranty Statement

The UPort 1130/1150/1150I will also come with the following item:

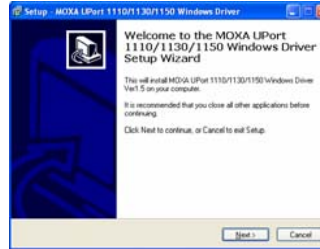
- Mini DB9F-to Terminal-Block Converter

NOTE: Please notify your sales representative if any of the above items are missing or damaged.

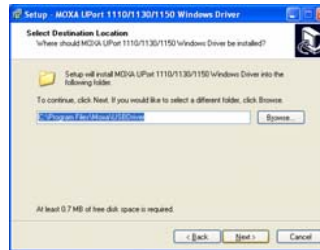
3. Hardware Introduction

The following instructions and screenshots are from a PC running Windows XP(32-bit), but the same instructions apply for Windows 98/ME/2000 and Windows XP/2003/Vista (32-bit and 64-bit).

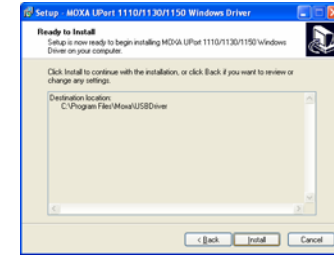
1. Run **Setup.exe**, located on the Documentation and Software CD-ROM. Click on **Next** to begin installing the driver.



2. Click on **Next** to install the driver in the indicated folder.



3. Click on **Install** to proceed with installation.



4. The next window cautions you that this software has not passed Windows logo testing. This is a standard warning, and Moxa has thoroughly tested the driver for safe Windows operation. Please click **Continue Anyway** to proceed.



5. A window will appear indicating that all files have been installed. Click **Finish**.

4. Installing the Hardware

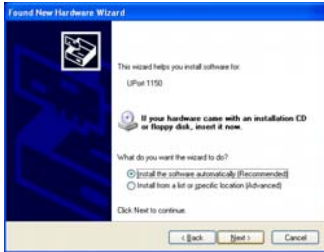
1. Plug the adaptor into any upstream USB port (e.g., a USB port on your computer). Windows are done with hardware installation at this point and may continue on to port configuration. Windows will auto-detect the UPort cable and show **Found New Hardware** in the System Tray.



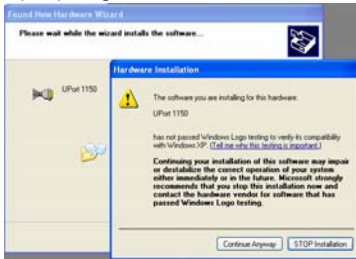
2. The following window will appear. Select **No, not this time** click **Next**.



3. Select **Install the software automatically (Recommended)**, and then click **Next** to proceed.



4. The next window cautions you that this software has not passed Windows logo testing. This is a standard warning, and Moxa has thoroughly tested the driver for safe Windows operation. Please click **Continue Anyway** to proceed.



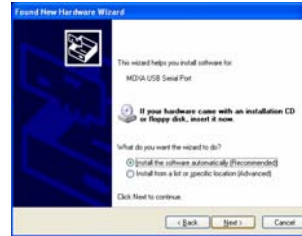
5. A window will appear showing the model name and indicating that Windows has completed the driver installation. Click **Finish**.

5. Installing the Port Driver

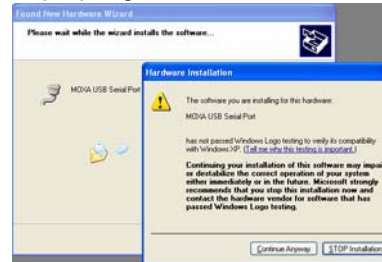
1. The **Found New Hardware Wizard** will automatically open to install the driver for the new serial port. Select **No**, **not this time**, then click **Next**.



2. Select **Install the software automatically (Recommended)**, and then click **Next** to proceed.



3. The next window cautions you that this software has not passed Windows logo testing. This is a standard warning, and Moxa has thoroughly tested the driver for safe Windows operation. Please click **Continue Anyway** to proceed.



4. After all files have been copied to the system, the **Completing the Found New Hardware Wizard** window will open to indicate that the wizard has finished installing the new COM port. Please click **Finish**.

6. Installing the Linux Driver for the UPort 1100 Series.

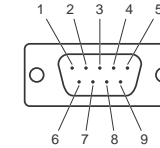
1. Execute the following commands from the Linux prompt:


```
#mount /dev/cdrom /mnt/cdrom
#cd /
#mkdir moxa
#cd moxa
#cp /mnt/cdrom/<driver
directory>/driv_linux2.6_uport1p_vx.x_build_xx.tgz
#tar xvfz driv_linux2.6_uport1p_vx.x_build_xx.tgz
2. #cd mxu11x0/driver
#make clean; make install
3. #modprobe mxu11x0
```

7. Serial Port Pin Assignments

The UPort 1100 series uses male DB9 connectors. Pin assignments are shown in the following diagram:

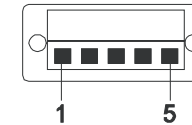
Male DB9



Pin	RS-232	RS-422/485 (4-wire)	RS-485 (2-wire)
1	DCD (in)	TxD-(A)	---
2	RxD (in)	TxD+(B)	---
3	TxD (out)	RxD+(B)	Data+(B)
4	DTR (out)	RxD-(A)	Data-(A)
5	GND	GND	GND
6	DSR (in)	---	---
7	RTS (out)	---	---
8	CTS (in)	---	---

The UPort 1130/1150/1150I comes with a DB9 to terminal block converter, with pin assignments as shown below:

Terminal Block



Pin	RS-422/485 (4-wire)	RS-485 (2-wire)
1	TxD+(B)	---
2	TxD-(A)	---
3	RxD+(B)	Data+(B)
4	RxD-(A)	Data-(A)
5	GND	GND

Note that the converter maps pin 1 on the DB9 connector to pin 2 on the terminal block, and pin 2 on the DB9 connector to pin 1 on the terminal block.

8. Certification



This product complies with Chinese RoHS (Restriction of Hazardous Substances) regulations for Electronic Information Products.

Copyright © 2008
Moxa Inc.
All rights reserved.
Reproduction without permission is prohibited.

MOXA[®]

Tel: +886-2-8919-1230 www.moxa.com
Fax: +886-2-8919-1231 support@moxa.com