

AgLogic™ SSI Adapter



JOHN DEERE

INSTALLATION INSTRUCTIONS

AgLogic™ SSI Adapter

PFP11260 08JUN11 (ENGLISH)

John Deere Ag Management Solutions
PFP11260 (08JUN11)

LITHO IN U.S.A.
COPYRIGHT © 2011
DEERE & COMPANY
Moline, Illinois

All rights reserved.
A John Deere ILLUSTRATION © Manual

PFP11260-19-08JUN11

Overview

This document is an installation instruction for the AgLogic™ SSI Adapter which allows data to come across from the Agvance® System from Software Solutions

Integrated, LLC (SSI) into the AgLogic™ System. It is to be used by IT personnel and Network Administrators. In general, the steps directly following will configure the SSI Adapter.

MM97743.000031B -19-13SEP10-1/1

Database Preparation

The AgLogic™ SSI Adapter requires MS SQL Server 2000 or greater.

The username and password of a “SQL Server Authentication Account” for the database will be needed during installation. If such a user does not yet exist, a new user should be created that has access to the Agvance® database and will need db_datareader and db_datawriter permissions. Additionally when installing the adapter

this user will need the db_ddladim permission. This additional permission can be removed when the setup is complete.

The “SQL Server Authentication Account” should be configured such that its password never expires and never needs to be changed. Sservername and database instance (if used) of the Microsoft SQL Server used to store the Agvance® data will be needed during installation. Please have this information readily available.

MM97743.000031C -19-08SEP10-1/1

AgLogic™ Web Application Setup

The screenshot shows the AgLogic™ web application interface. At the top, there is a header with the John Deere logo and the text "JOHN DEERE AgLogic™ Matt Moehn - Field Testing Org- Urbandale". Below the header is a navigation menu with tabs: Home, Schedule, Orders, Messages, Customer/Farm/Field, Equipment, Reports, and Management. The Management tab is selected. Below the navigation menu is a sub-menu with tabs: Users, B users, Landmarks, Locations, Regions, and Organization. The Users tab is selected. Below the sub-menu is a section with an "Add User" button and a checkbox labeled "Show Disabled Users". Below this is a table with columns: Edit, Username, and Name. The table contains three rows of user data.

Edit	Username	Name
Edit	B	Bridgit Keller
Edit	b1	Bridgit No Access
Edit	B2	Bridgit Sales

PC13099 -JUN-04MAR11

Add User

Ensure your Organization has been created in the AgLogic™ web application. Please refer to the email with subject line “Your John Deere AgLogic™ Order – Action Required” for further details.

A unique username and password (example: SSI_myOrg) created in the AgLogic web application will be needed during the installation. If such a user does not yet exist, please follow these instructions:

1. Log into the AgLogic™ System at <https://aglogic.deere.com>

2. Click on the “Management” tab
3. Click on the “Users” tab
4. Select “Add User”
5. Fill in the Username, Password, First Name, Last Name
6. Check the “Organization Admin” box
7. Click “Save”

Continued on next page

CZ76372.00002A1 -19-04MAR11-1/3



JOHN DEERE

AgLogic™

Matt Moehn - Field Testing Org- Urbandale

Home Schedule Orders Messages Customer/Farm/Field Equipment Reports Management

Users PDA Users Landmarks Locations Regions Organization

Field Testing Org- Urbandale
4140 114th Street
Urbandale, IA 50322
515-111-1236



Edit Organization Details



Edit Program Options

PC13101—UN—08DEC10

Edit Organization Detail

The Organization's Back Office will need to be set so that the Agvance/SSI adapter will be available to download.

1. Click on the "Management" tab
2. Click on the "Organization" tab

3. Select "Edit Organization Details"
4. In the Back Office drop down select "Agvance/SSI"
5. Click "Save"

CZ76372,00002A1 -19-04MAR11-2/3



JOHN DEERE

AgLogic™

John Deere - Field Testing

Home Schedule Orders Messages Customer/Farm/Field Equipment Reports Management

Users PDA Users Depots Location Region Organization

Field Testing
8472 Suffolk Dr
Rockford, IL 61108
770-238-5100

Edit Organization Details

Edit Program Options

Download Agvance/SSI Adapter



PC13100—UN—04MAR11

Download Agvance/SSI Adapter

A new link will become available on the Organization tab. This link will be used in the next section.

CZ76372,00002A1 -19-04MAR11-3/3

Installation

1. Log onto the Server which contains the Agvance® Program Files
2. Create a "SSI_Adapter" folder where a zip file will be placed. This folder will be referred to as <adapterFolder> in this doc from now on to avoid confusion with any SSI installation folders.
3. Download the AgLogic™ SSI Adapter from the link shown in the previous section.
4. Unzip the "AgLogic_SSIAdapter.zip" file into <adapterFolder> which was created in step 2.
5. Once the "AgLogic_SSIAdapter.zip" file has been unzipped, open the <adapterFolder>
6. If you plan to export Shape files from Agvance® into AgLogic™ please follow these additional steps: (If you do not plan to export shape files from Agvance® then please proceed to the **Configuration** step.)
 - a. Copy Agv2Shp.exe (this file is located in the <adapterFolder>) into the Program Files\AgVance on the same server
 - b. Once the Agv2Shp.exe is in the Program Files\AgVance folder, right click the file and select: create shortcut. Name the shortcut: Agv2Shp.exe and place the shortcut inside of the <adapterFolder> created in step 2.

- c. Right click the new shortcut for Agv2Shp.exe and select Properties, change the Target: to where the Agv2Shpe.exe was placed, in the Program Files of Agvance®. (Example: "E:\Program Files\AgVance\Agv2Shp.exe") Also change the Start In: to where the AgVance® Database resides.

*NOTE: This could be a Mapped drive.
(Example: "I:\AvData")*

NOTE: The information to setup the shortcut will match the properties of the AgVance® Icon properties.

- d. Once the Agv2Shp.exe shortcut has been setup, save the changes for the Properties of the shortcut.
- e. Double Click the New Agv2Shp.exe shortcut (the shortcut will be in the <adapterFolder>) and a "Map Export Type" pop-up will appear.
- f. Select the map export type for your AgVance® installation and click "Save".

NOTE: If you are unaware of the Map Export Type that the shapefiles are created in, please contact Agvance® for assistance.

CZ76372,00002A2 -19-04MAR11-1/1

Configuration:

Use the AgLogic™ SSI Adapter Wizard to complete the installation and configuration of the adapter. The wizard can be started by clicking on SSIWizard.bat in the <adapterFolder>.

Step 1: Welcome

- This document, and any updates made to it, can be found by clicking the "SSI Adapter Installation Document" link.
- Click Save & Exit at any time to save your changes and exit the installation wizard.



Welcome

Continued on next page

CZ76372,00002BE -19-05APR11-1/8

Step 2: Connecting to AgLogic™

- Enter in the Username/Password created above under “AgLogic™ Web Application Setup”
- The Username/Password will be validated against the AgLogic™ Web Application when the ‘Next’ button is clicked. An error will appear if the validation could not be completed or invalid data has been entered.
- Both fields are required



PC12809 —UN—24AUG10

CZ76372,00002BE -19-05APR11-2/8

Step 3: Connecting to your Database

- Enter in the information that connects to your MS SQL Server Database
- The Connection URL will automatically update as you enter in your information, but can be modified, if needed.
- 1433 is the default value for the Port in MS SQL Server.

NOTE: Instance is optional and should be supplied only if your MS SQL Server configuration requires it.

- The adapter will attempt to connect to your database when the ‘Next’ button is clicked. An error will appear if the adapter was unable to connect.

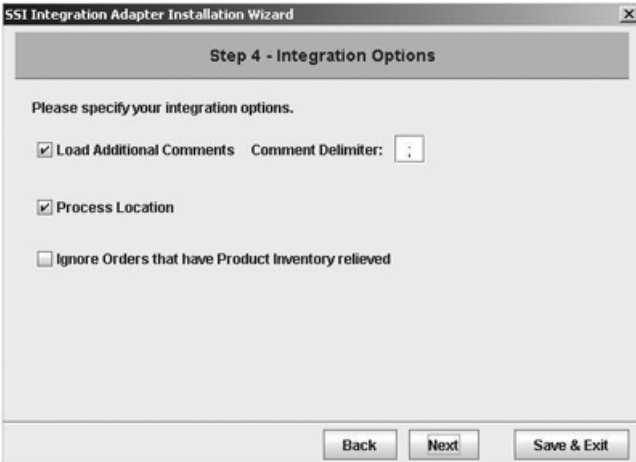


PC12810 —UN—24AUG10

CZ76372,00002BE -19-05APR11-3/8

Step 4: Integration Options

- Load Additional Comments is checked by default. This option instructs the adapter to load any additional Work Order comments from Agvance®.
- Comment Delimiter defaults to a semicolon (;).
- Process Location is checked by default. This indicates that the adapter should create a Location for a Work Order based on data in Agvance®. If your organization does not use Locations in AgLogic™ this option should be unchecked.
- Ignore Orders that have Product Inventory relieved is unchecked by default. This option should be checked if work orders that have been delivered on should not appear in AgLogic™.



PC13094 —UN—24JAN11

Continued on next page

CZ76372,00002BE -19-05APR11-4/8

Step 5: Fields to Ignore

- Agvance® may use placeholder fields to ensure data integrity. These placeholders are unnecessary in AgLogic™. If you wish to ignore those placeholders you can specify their names here. For example many work orders are created with Field Name “All”. Specify names of any Fields that you would like the adapter to ignore.
- To remove a field from the Ignored Fields List, highlight the field and click ‘Remove’
- These fields are not required

SSI Integration Adapter Installation Wizard

Step 5 - Fields To Ignore

Please specify the names of any fields you want ignored by the adapter.

Field Name: Add

Ignored Fields: Remove

Back Next Save & Exit

PC12812 —JUN—24AUG10

CZ76372,00002BE -19-05APR11-5/8

Step 6: UOM Mappings

- Configure the Unit Of Measure Mappings for Dry and Liquid Work Orders
- All fields have default values. Change these values to match the UOMs you wish to use in AgLogic™.

These fields are not required

SSI Integration Adapter Installation Wizard

Step 6 - UOM Mappings

Please supply the UOMs that the adapter should use for values that do not have a UOM in the SSI database.

Dry Quantity: Lbs Liquid Quantity: Gal

Dry Rate: Lbs/Acre Liquid Rate: Gall/Acre

Dry Density: Lbs/CuFt Liquid Density: Lbs/Gal

Back Next Save & Exit

PC12813 —JUN—24AUG10

Continued on next page

CZ76372,00002BE -19-05APR11-6/8

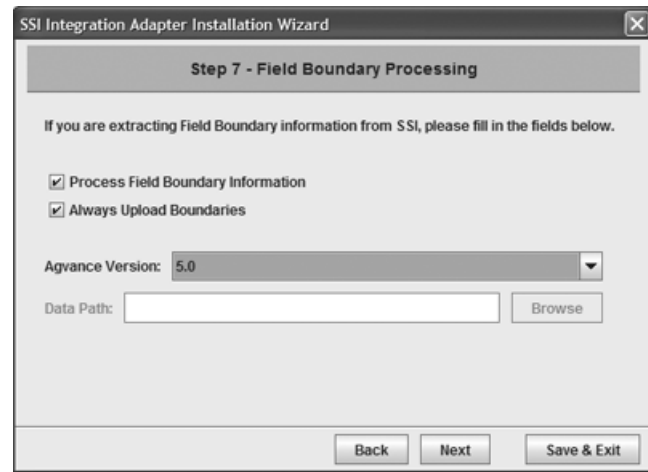
Step 7: Field Boundary Processing

If you plan to export Shape files from Agvance® into AgLogic™, check "Process Field Boundary Information".

"Always Upload Boundaries" is checked by default. If the boundary is available, this option will upload boundaries into AgLogic when a work order is changed for the associated field.

- In the Agvance® Version drop down select your current version of Agvance®.
 - If version 5.0 is selected, the Data Path entry becomes greyed out, because it is not required.
 - However, if version 4.X is selected, the Data Path is required.
- Enter or browse to the location of the Agvance® Database. This should be the same path provided in the "Start In" property of the Agv2Shp.exe.lnk.
- If "Process Field Boundary Information" is checked the "Next" Button will not be available until a valid Data Path has been entered.

NOTE: If needed, reference step 6 of the Installation section earlier in this instruction.



PC13229—UN—30MAR11

CZ76372.00002BE -19-05APR11-7/8

Step 8: Complete Installation

- Install Tables and Triggers will create the tables and triggers in the MS SQL Server database needed for integration.
- To associate SSI information with AgLogic, please check the synchronize box along with Customers, Farms, and Fields.
- Install Service will create the windows service that runs the adapter.
- Click Finish, to complete the install process. A pop-up window will appear, indicating "Install Successful".



PC12815—UN—24AUG10

CZ76372.00002BE -19-05APR11-8/8

Starting the Service

To start the aglogicintegrator service:

1. In windows click Start >> Settings >> Control Panel >> Administrative Tools >> Services

2. In the services dialog find aglogicintegrator, right-click and "Start" the service.
3. The service should already be set to automatic to ensure the service will still run if the machine is restarted.

MM97743.0000320 -19-25AUG10-1/1

Test

To ensure that the installation of the AgLogic SSI Adapter was successful, follow these steps:

1. Create orders in AgVance®. These orders need to be marked as “Custom Apply” in order to be displayed in AgLogic™
2. Validate on the AgLogic™ Schedule Page that open orders were transferred successfully.
 - a. Log into AgLogic™
 - b. Click on the Schedule tab
 - c. Verify that the new orders are available on the right-hand pane and on the map
3. Review the Customer/Farm/Field tab in AgLogic™ to ensure that information came in from AgVance®.
 - a. Log into AgLogic™

- b. Click on the Customer/Farm/Field tab
- c. Search for a Customer, Farm and/or Field
- d. View results

4. View the “Integration Errors” box to see if any open orders had errors when coming into the AgLogic™ System.

The “Integration Errors” box can be found on the AgLogic™ Home page. If the number in this box is “0,” there are no errors. If the number is greater than “0” please proceed through the following steps:

- a. Click on the hyperlinked number in the “Integration Errors” box.
- b. View the report describing the errors and troubleshoot as needed.

*NOTE: If you need additional information or help please see the **Additional Help** section*

MM97743,0000321 -19-08SEP10-1/1

FAQ's

Q: If I host multiple locations within my organization on one server, can I limit the work orders that come into the AgLogic™ System?

A: Yes, any work order marked as “Custom Apply” from AgVance® will come into the AgLogic™ System. Marking any work order as “Loaded” will not send the work order into the AgLogic™ System.

MM97743,0000322 -19-25AUG10-1/1

Additional Help

If you need more help in completing any of the steps, please contact our Customer Contact Center at 888-GRN-STAR or GreenStar@JohnDeere.com

For general use questions about the AgLogic™ Mobile and Web applications, a complete help library can be found in the upper right hand corner of any page in the AgLogic™ web application.

MM97743,0000323 -19-25AUG10-1/1

Upgrade Instructions

Upgrades to the AgLogic™ SSI Adapter will be automatic to your system. Notifications that the AgLogic™ SSI

Adapter has been updated will display in the “What's New” on the AgLogic™ System Home screen.

MM97743,0000324 -19-25AUG10-1/1

