

CYMBAL PAD

PCY60

SERVICE MANUAL



CONTENTS

SPECIFICATIONS	2
DISASSEMBLY PROCEDURE	3
CIRCUIT BOARD	4
CURCUIT DIAGRAM	4
PARTS LIST	

IMPORTANT NOTICE

This manual has been provided for the use of authorized Yamaha Retailers and their service personnel. It has been assumed that basic service procedures inherent to the industry, and more specifically Yamaha Products, are already known and understood by the users, and have therefore not been restated.

WARNING: Failure to follow appropriate service and safety procedures when servicing this product may result in personal injury, destruction of expensive components, and failure of the product to perform as specified. For these reasons, we advise all Yamaha product owners that all service required should be performed by an authorized Yamaha Retailer or the appointed service representative.

IMPORTANT: The presentation or sale of this manual to any individual or firm does not constitute authorization, certification or recognition of any applicable technical capabilities, or establish a principle-agent relationship of any form.

The data provided is believed to be accurate and applicable to the unit(s) indicated on the cover. The research, engineering, and service departments of Yamaha are continually striving to improve Yamaha products. Modifications are, therefore, inevitable and changes in specification are subject to change without notice or obligation to retrofit. Should any discrepancy appear to exist, please contact the distributor's Service Division.

WARNING: Static discharges can destroy expensive components. Discharge any static electricity your body may have accumulated by grounding yourself to the ground buss in the unit (heavy gauge black wires connect to this buss).

IMPORTANT: Turn the unit OFF during disassembly and part replacement. Recheck all work before you apply power to the unit.

WARNING: CHEMICAL CONTENT NOTICE!

The solder used in the production of this product contains LEAD. In addition, other electrical/electronic and /or plastic (where applicable) components may also contain traces of chemicals found by the California Health and Welfare Agency (and possibly other entities) to cause cancer and/or birth defects or other reproductive harm.

DO NOT PLACE SOLDER, ELECTRICAL/ELECTRONIC OR PLASTIC COMPONENTS IN YOUR MOUTH FOR ANY REASON WHATSOEVER!

Avoid prolonged, unprotected contact between solder and your skin! When soldering, do not inhale solder fumes or expose eyes to solder/flux vapor!

If you come in contact with solder or components located inside the enclosure of this product, wash your hands before handling food.

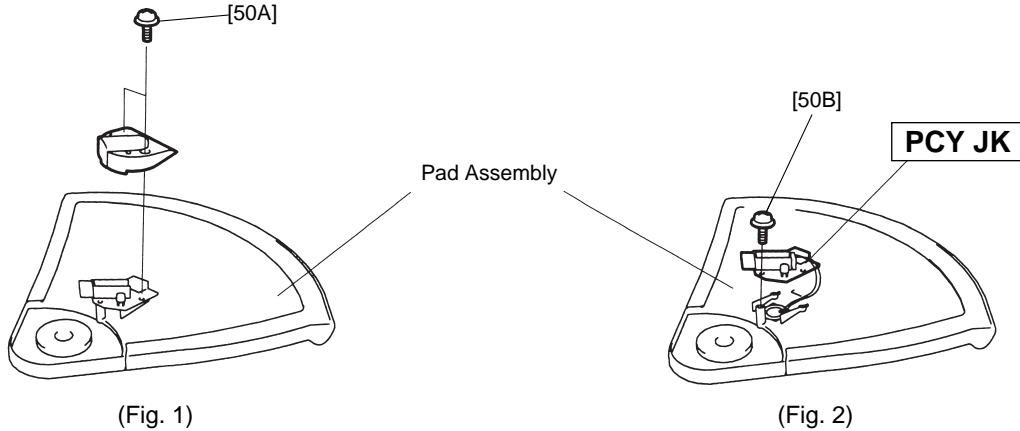
■ SPECIFICATIONS

External Dimensions	295 (W) x 234 (D) x 36 (H) mm
Weight	430 g
Controls	Output Level adjustment knob
Output connectors	Regular 0.25-inch phone jack (mono)
Accessories	3-meter phone cable(mono)

■ PCY60 DISASSEMBLY PROCEDURE

1. PCY JK Circuit Board

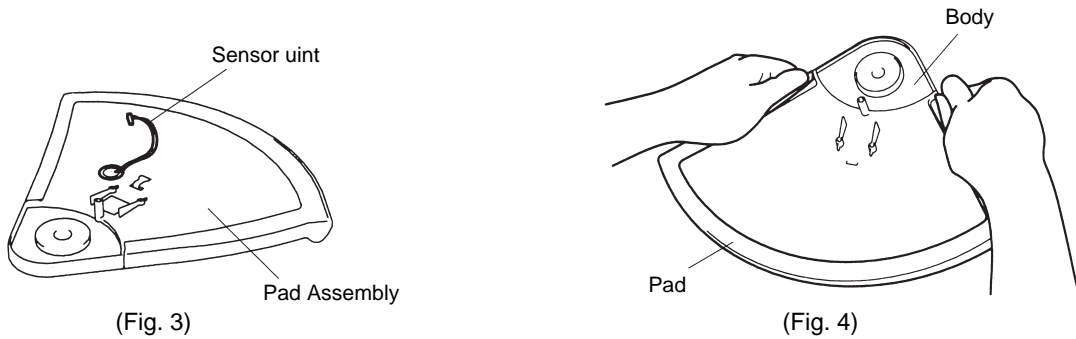
- 1-1 Remove the two (2) screws marked [A50]. The cover can then be removed. (Fig. 1)
- 1-2 Remove the screw marked [B50]. The PCY JK circuit board can then be removed. (Fig. 2)



[50]: Bind Head Tapping Screw-P 3.0x10 MFZN2BL (VU425500)

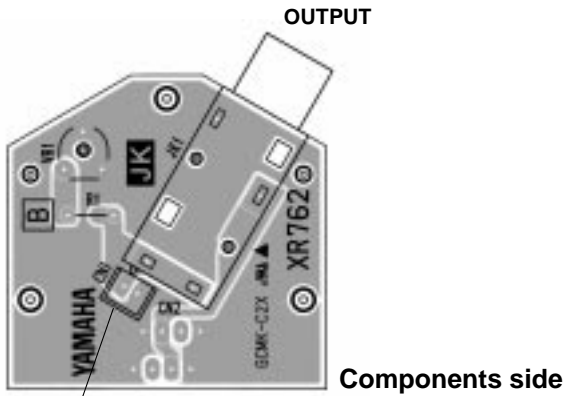
2. Sensor unit

- 2-1 Remove the PCY JK circuit board. (See Procedure 1.)
- 2-2 Peel the sensor unit off of the body. (Fig. 3)



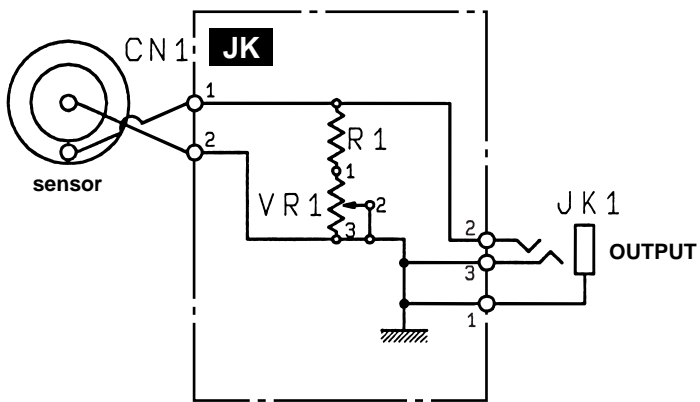
■ CIRCUIT BOARD

● PCY JK Circuit Board



CN1: to sensor unit

■ CIRCUIT DIAGRAM



CYMBAL PAD

PCY60

PARTS LIST

■ CONTENTS

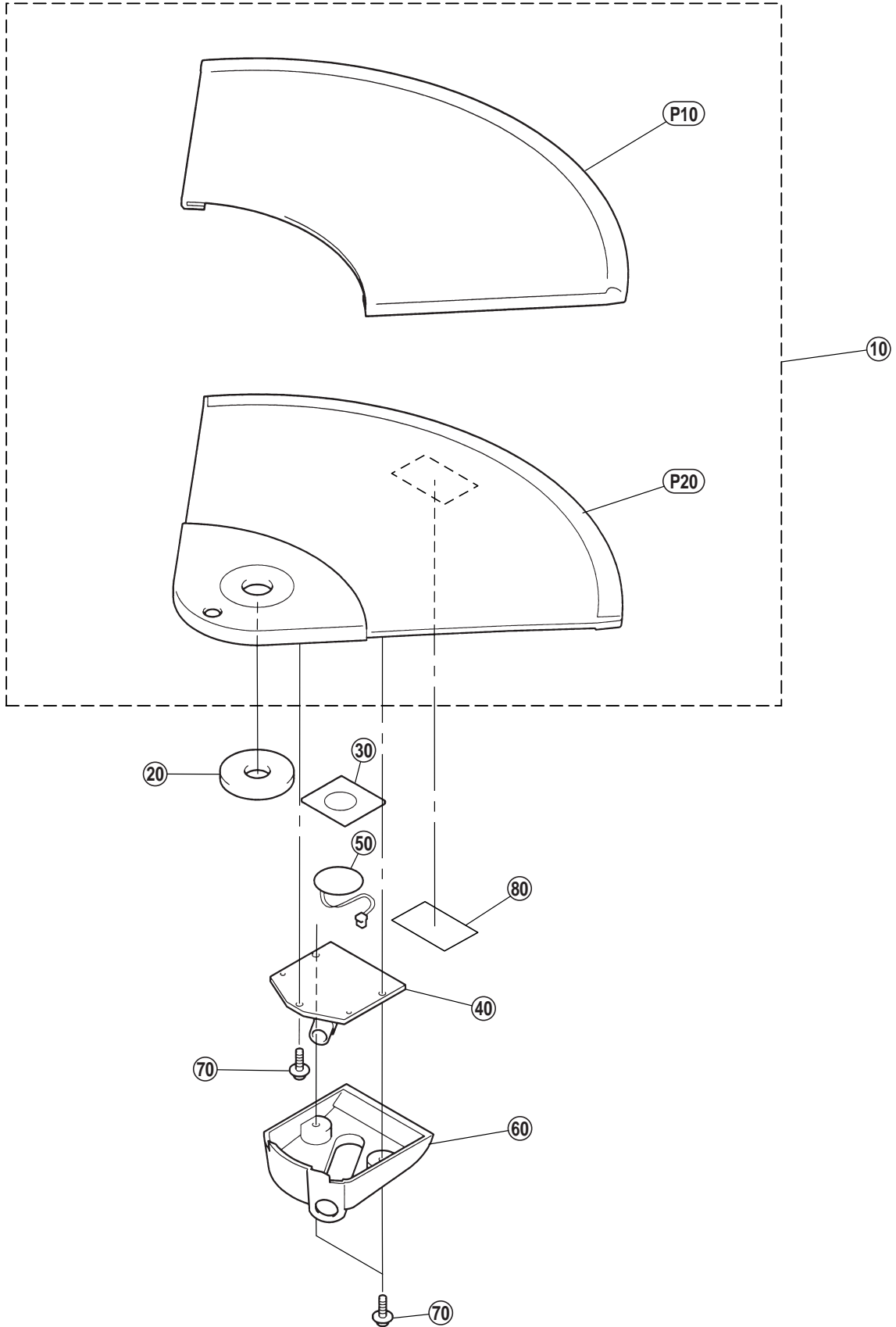
OVERALL ASSEMBLY..... 2
 ELECTRICAL PARTS..... 3

Notes: DESTINATION ABBREVIATIONS

A: Australian model	J: Japanese model
B: British model	U: U.S. model
C: Canadian model	V: General export model (110V)
E: European model	W: General export model (220V)
H: North European model	X: General export model
I: Indonesian model	Y: Export model

- The numbers in "QTY" shows quantities for each unit.
- The parts with "--" in "Parts No." are not available as spare parts.
- The mark " } " in the remarks column indicates that these parts are interchangeable.

OVERALL ASSEMBLY



OVERALL ASSEMBLY

REF NO.	PART NO.	DESCRIPTION		REMARKS	QTY	RANK
		OVERALL ASSEMBLY		PCY60		
10	--	Overall Assembly		(V353900)		
20	--	Pad Assembly		(V353950)		
30	VU424900	Ring Spacer				04
	VT807600	Rubber Tape	25X25			03
*	VU426750	Circuit Board	PCYJK	(XR762B0)		
40	VU425300	Sensor Unit				05
50	VU425400	Cover				06
60	VU425500	Bind Head Tapping Screw-P	PW 3.0X10 MFZN2BL		3	01
70	--	Name Plate				
80	--	Pad Assembly		(V353950)		
* P10	V3539600	Body				
* P20	V3539700	Pad				
		ACCESSORIES				
	V2638600	Phone Cable				07

*: New parts

RANK: Japan only

ELECTRICAL PARTS

REF NO.	PART NO.	DESCRIPTION		REMARKS	QTY	RANK
		ELECTRICAL PARTS		PCY60		
*	VU426750	Circuit Board	PCYJK	(XR762B0)		
R1	HF757100	Carbon Resistor	10.0K 1/4 J			01
JK1	VS056300	Phone Jack	JACK HLJ7001-01-			01
CN1	VB389800	Connector Base Post	PH- 2P TE			01
VR1	VA788500	Trimmer Potentiometer	B 220.0K 3P RHE			01

*: New parts

RANK: Japan only