

Philips GoGear audio player

SA9100
SA9200

User manual



PHILIPS

Need help?

Please visit

www.philips.com/support

where you can access to a full set of supporting materials such as user manual, flash tutorial, the latest software upgrades and answers to frequently asked questions.

Or call our Customer Care Helpline,

[0906 1010 017](tel:09061010017) (£0.15/min)

where our professional support team will be pleased to assist you in solving any issues you may have with your player.

Country	Helpdesk	Tariff / min	Keep ready
Europe			
Austria	0820 901115	€0.20	Das Kaufdatum, Modellnummer und Serial nummer
Belgium	070 253 010	€0.17	La date d'achat la référence et le numéro de série du produit
Czech Republic	800142100	Mistní tarif	Datum zakoupení, číslo modelu a sériové číslo
Denmark	3525 8761	Lokal tarif	Indkøbsdato, type-, model- og serienummer
Finland	09 2290 1908	Paikallinen hinta	Ostopaivä ja tarkka mallinnumero ja sarjanumero
France	08 9165 0006	€0.23	La date d'achat la référence et le numéro de série du produit
Germany	0180 5 007 532	€0,12	Das Kaufdatum, Modellnummer und Serial nummer
Greek	0 0800 3122 1223	1 αστική μονάδα	Την ημερομηνία αγοράς και τον ακριβή κωδικό μοντέλου και τον αριθμό σειράς του προϊόντος σας
Hungary	06 80 018544	Helyi tarifa	A vásárlás dátuma, modell szám és száriaszám
Ireland	01 601 1161	Local tariff	Date of Purchase, Model number and Serial number
Italy	199 404 042	€0.25	La data di acquisto, numero di modello e numero di serie
Luxemburg	26 84 30 00	Tarification locale	La date d'achat, la référence et le numéro de série du produit
Netherlands	0900 0400 063	€0.20	De datum van aankoop, modelnummer en serienummer
Norway	2270 8250	Lokal tariff	Datoen da du kjøpte produktet & modellnummeret
Poland	022 3491504	Cena połączenia lokalnego	Data zakupu, Numer modelu i numer seryjny
Portugal	2 1359 1440	Preço local	A data de compra, número do modelo e número de série
Russia	(495) 961-1111 8 800 200-0880	по России звонок бесплатный	Дата покупки, Номер модели и Серийный номер
Slovakia	0800004551	Miestna tarifa	Dátum zakúpenia, číslo modelu a sériové číslo
Spain	902 888 785	€0,15	Fecha de compra y número del modelo y número de serie
Sweden	08 632 0016	Lokal kostnad	Inköpsdatum, modellnummer och serienummer
Switzerland	02 2310 2116	Ortstarif	Das Kaufdatum, Modellnummer und Serial nummer
UK	0906 1010 017	£0.15	Date of Purchase, Model number and Serial number
North America			
Canada	0820 901115 (Francophone) 1-888-744-5477 (English / Spanish)	€0.20	Date of Purchase, Model number and Serial number
USA	1-888-744-5477	€0.17	Date of Purchase, Model number and Serial number
South America			
Argentina	11 4544 2047	Tarifa local	Fecha de compra y número del modelo y número de serie
Brazil	0800 701 02 03 (Except Sao Paulo) 2121 0203 (Sao Paulo)	Grátis	A data de compra, número do modelo e número de série
Chile	600 744 5477	Tarifa local	Fecha de compra y número del modelo y número de serie
Mexico	01 800 504 6200	Gratis	Fecha de compra y número del modelo y número de serie
Asia			
China	4008 800 008	本地费率	购买日期、型号及序号
Hong Kong	2619 9663	本地费率	購買日期、型號及序號
Korea	02 709 1200	관세	구매일자, 모델 번호, 시리얼 번호





Contents

- 2 Your new player
 - 2 Accessories
 - 3 Optional accessories
 - 3 Register your product

- 4 Getting started
 - 4 Overview of controls and connections
 - 5 Main menu
 - 6 Vertical touch strip navigation
 - 7 Install
 - 8 Connect and charge
 - 8 Use the supplied USB cable
 - 9 Battery level indication
 - 10 Transfer
 - 10 Enjoy
 - 10 Power on and off
 - 11 Demo mode

- 12 Organize and transfer photos and music with Windows Media Player 10
 - 12 Music transfer
 - 13 Add songs to Windows Media Player Library
 - 16 Synchronize Windows Media contents with your player
 - 20 Manage your Windows Media Player Playlist
 - 21 Manage your songs and playlists in Windows Media Player
 - 22 Photo transfer
 - 22 Enable photo support
 - 23 Add photos to Windows Media Player Library
 - 23 Transfer photos to your player

Contents

- 26 Detailed operation
- 26 Music mode 
- 26 Controls
- 27 Find your music
- 28 Album art
- 29 Play mode
- 30 Use the Sampler
- 31 Sound settings
- 31 Playlist on the go
 - 32 Add songs to playlist on the go
 - 32 Play back playlist on the go
 - 33 Save Playlist on the go
 - 33 Clear playlist on the go
 - 34 Remove songs from Playlist on the go
- 34 Most played
- 35 Other playlists
 - 35 Delete playlist from your player
 - 36 Rate your songs
 - 36 Now playing 
- 37 Photos 
- 37 Transfer photos from your computer to your player
- 38 Transfer photos from your player to your computer
- 38 Find photos on your player
- 39 Personal Image
- 39 Philips Photo Fixer
- 39 Slideshow
- 41 Settings 
- 44 Use your player to store and carry data files

Contents

- 45 Upgrade your player
 - 45 Manually verify whether your firmware is up to date
- 47 Troubleshooting
- 52 Important safety information
- 58 Technical data
- 60 Glossary

Your new player

With your newly purchased GoGear player, you can enjoy the following:

- MP3 and WMA playback
- Photo viewing

Accessories

The following accessories are included with your player:



Headphones



Protective
pouch



USB
cable



CD-ROM containing Windows Media Player 10, Philips Device Manager, Philips Device Plug-in, User Manual, Tutorials and Frequently Asked Questions



Quick start guide

Optional accessories

The following accessories are not included with your player, but can be bought separately. You can find them at www.philips.com/GoGearshop (Europe) or www.store.philips.com (US).

GoGear travel charger (PAC011)



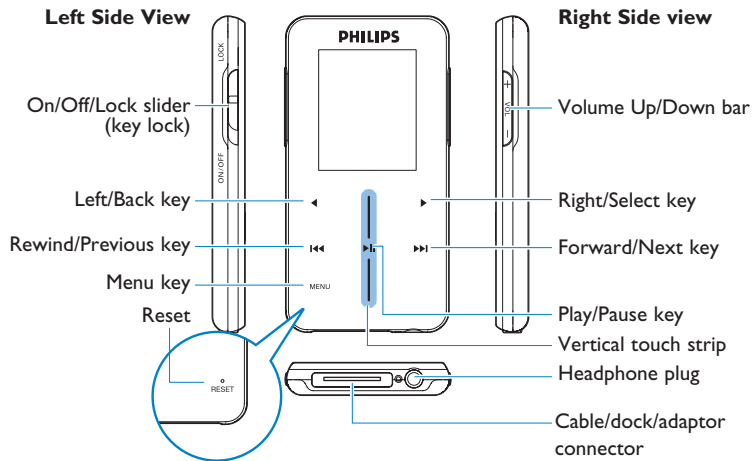
Multi voltage power adaptor /
charger with various plugs

Register your product

We strongly recommend that you register your product in order to gain access to free upgrades. To register your product, please log on to www.philips.com/register or www.philips.com/usasupport (for US residents) so that we can inform you as soon as new updates become available.





Getting started

Overview of controls and connections



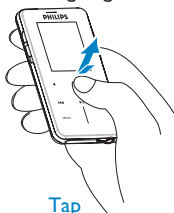
Press	To
ON/OFF LOCK	Power On/Off (slide down and hold for about 1 second) Lock all touch control keys (slide up)
▶	Play/Pause songs
◀◀	Move back to previous song Fast rewind
▶▶	Jump to next song Fast forward
+ VOLUME -	Control volume
◀	Return to previous menu/option
▶	Select option Go to next option
Vertical touch strip	Scroll through lists
MENU	Access list of menu options

Main menu

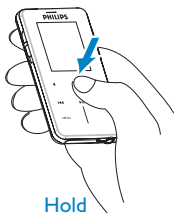
Menu	To
Music 	Play your digital music tracks
Picture 	View pictures
Settings 	Customize the settings of your player
Now Playing 	Go to the play screen

Vertical touch strip navigation

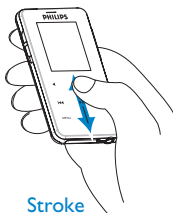
Your player has touch sensitive controls that respond to the touch of your fingers. The **VERTICAL TOUCH STRIP** (see picture) is used to scroll through lists. It responds to the following finger movements.



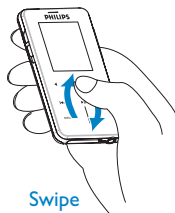
Tap



Hold



Stroke



Swipe

Action	Function
Tap the top or bottom of the strip	Move up or down step by step
Hold on the top or bottom of the strip	Scroll through a list at increasing speed
Stroke from top to bottom or bottom to top	Scroll through list
Swipe up or down	List will scroll quickly like a wheel (Fly wheel) and then slow down gradually
Tap in the middle	To stop list from spinning To Play/Pause music
Stroke and hold on the end of the strip	Scroll through list at constant speed and gradually increase the scroll speed. The scroll speed will decrease and stop when finger releases.
Continuous swipe	Add speed to the wheel or maintain the fast list scrolling speed if maximum scrolling speed is reached.

Install

IMPORTANT Make sure to install the software supplied in the by-packed CD for music and photo transfer.

System requirements:

- Windows XP (SP2 or above)
- Pentium Class 300MHz processor or higher
- 128MB RAM
- 500MB hard disk space
- Internet connection (preferable)
- Microsoft Internet Explorer 6.0 or later
- USB port

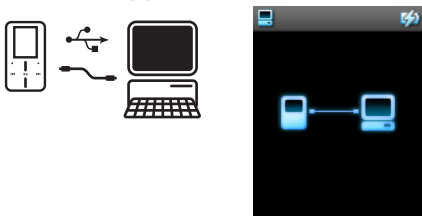
- 1 Insert the CD supplied with your product into the CD ROM drive of your PC.
- 2 Follow the on-screen instructions to complete the installation of Windows Media Player (including necessary plug-ins) and **Philips Device Manager**.
- 3 If the installation program does not start automatically, browse the CD contents via Windows Explorer and run the program by double clicking on the file ending with .exe.

Lost your CD? Don't worry, you can download the CD contents from www.philips.com/support or www.philips.com/usasupport (for U.S. residents).

Connect and charge

Your player will be charged when connected to the PC.

Use the supplied USB cable



Connect the supplied USB cable to PC for charging and data transfer. However, your PC must have hi-power capability in order to perform charging.

Charge your player for at least 5 hours before using it for the first time.

The battery** will be fully charged (100%) in 5 hours and 70% charged in one hour for quick charge.

The player is fully charged when the charging animation stops and  is displayed.

Your fully charged player will allow up to 14 hours** of music playback.

***Rechargeable batteries have a limited number of charge cycles and may eventually need to be replaced. Battery life and number of charge cycles vary by use and settings.*

Battery level indication

The approximate power levels of your battery are indicated as follows:



Battery is full



Battery is two-thirds full



Battery is half full



Battery is low



Battery is empty

When the battery is nearly empty, the following power low warning screen will blink and emit a beep tone. When you hear a double beep, your player will power down in less than 60 seconds.



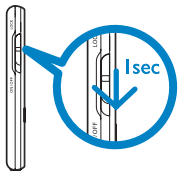
All settings will be saved before the player shuts down.

Transfer

You can transfer music and photos to your player using Windows Media Player. See **Organize and transfer photos and music with Windows Media Player 10** section of this user manual for more details.

Enjoy

Power on and off



To power on, slide down and hold **ON/OFF LOCK** slider to **ON/OFF** position until the player powers on.

To power off, slide down and hold **ON/OFF LOCK** slider to **ON/OFF** position until the player powers off.

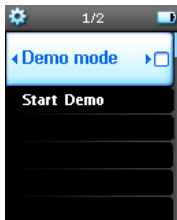
Your player automatically powers off if there is no operation or music played for 10 minutes. The last playback status and screen will be resumed the next time it is powered on unless the player has been powered off for a long period of time or the battery level was low when the player was powered off.

Demo mode

The Demo mode is a screensaver to give you a quick introduction to the product.

You may not need the demo mode after some use or you may prefer not to have the screensaver to increase your battery lifetime.

The Demo mode can be turned off by accessing the Demo mode under the Settings menu and unchecking the box as shown.



Organize and transfer photos and music with Windows Media Player 10

This chapter describes the steps that you need to follow to successfully transfer music and photos to your player. For more information, see **Windows Media Player (WMP) Help** on your computer.

IMPORTANT Make sure you have installed the software provided in the by-packed CD for music and photo transfer.

Music transfer

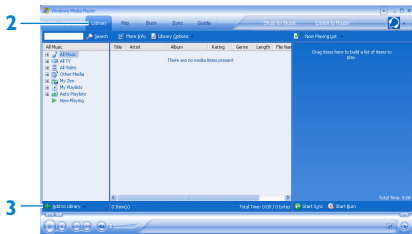
You can add songs, organize songs into your playlists and manage your playlist using **Windows Media Player 10**.

TIP We recommend that you always use **Windows Media Player** to transfer music to your player. However, if you prefer to use **Windows Explorer**, always make sure to copy your music into the **Media > Music** folder, otherwise the songs will neither show nor play on your player.

Add songs to Windows Media Player Library

Songs that are already on your computer

1 Start **Windows Media Player** by double clicking the following icon on your desktop.



2 Select **Library** tab to access media library

3 Click **Add to Library** on the bottom left of the screen.

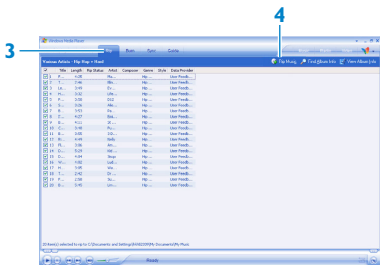
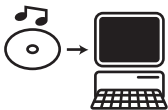
> You can choose to add files from folder, URL, by searching your computer, etc.

4 Select the desired files and add them to the library.

Rip songs from a CD

If you want to transfer music from a CD to your player, you need to create a digital copy of the music on your PC first. This is called ripping.

1 Start **Windows Media Player**.



2 Insert the Audio CD.

3 Select **Rip** tab to display a list of music tracks on your CD.

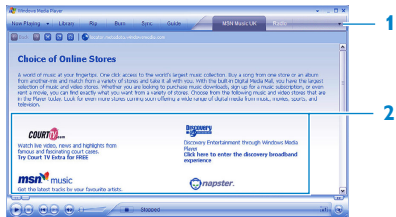
If your computer is connected to the Internet, the album information will be automatically obtained so that you don't have to enter the song titles and other information manually. If this does not happen, verify that you are connected to the Internet and click **Find Album Info**.

4 Select the songs that you would like to rip and click **Rip Music** on the top menu bar.

> The songs will be converted into digital copies and added to **Windows Media Player** library.

Buy songs online

If you want to buy music online, you need to select a music store.



1 Click the little triangle on the top right of the screen and select **Browse all Online Stores**.

2 Choose a store and follow the on-screen instructions.

> *After you have bought a song or an album, it will appear in **Windows Media Player** library.*

Synchronize Windows Media contents with your player

When you connect the player to your computer for the first time, **Windows Media Player** will start **Device Setup Wizard**. You can choose to synchronize your player with **Windows Media Player** library automatically or manually.

TIP

When your player is connected for the first time, WMP10 gives you this option.

Automatic Synchronization:

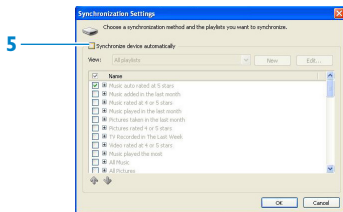
Choosing **Automatic** will automatically synchronize your player with your content each time you connect your GoGear to your computer. Be aware that this option allows you to auto sync with one PC only.

Manual Synchronization:

Choosing **Manual** allows you to select the content that you want to synchronize each time.

Set up automatic synchronization

- 1 Start **Windows Media Player**.
- 2 Connect the player to your computer using the supplied USB cable.



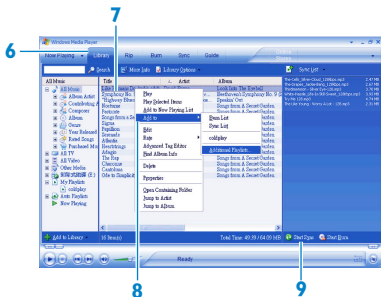
- 3 Select **Sync** tab
 - 4 Click **Set up Sync**.
- > **Synchronization settings** dialog box will be displayed.
- 5 Select **Synchronize device automatically** check box.
 - 6 Select the check boxes that correspond to the playlists you want to synchronize.
 - 7 Click **OK**.

IMPORTANT Do not disconnect your player while transferring is in progress.

Set up manual synchronization



- 1 Start **Windows Media Player**.
- 2 Connect the player to your computer using the supplied USB cable.
- 3 Select **Sync** tab.
- 4 In the pull-down menu on the right pane, select **Philips** or **Philips GoGear** as the destination.
- 5 If they are not in the list, press **F5** to refresh and try again.



6 Select the **Library** tab to access the media library.

7 Click to highlight the song you want to copy.

8 Right click on the song and select **Add to > Sync List**.

OR

Drag and drop the song into the **Sync List** on the right pane.

9 Click **Start Sync** button at the bottom of the screen to start synchronization.

> *The progress will be displayed just above the **Start Sync** button.*

Manage your Windows Media Player Playlist

Create a Playlist

- 1 Start **Windows Media Player**.
 - 2 Select the **Library** tab to access the media library.
 - 3 Click to highlight a song.
 - 4 Right click on the track and select **Add to > Additional Playlist...**
 - 5 In the **Add to Playlist** dialog box, select an existing playlist or click **New** to add a new playlist.
- > *The song you have selected will be added to the playlist.*

TIP To select more than one song, press and hold **Ctrl** of your keyboard, then click to select any number of songs.

To select consecutive songs in a list, click the first song, then press and hold **Shift** of your keyboard and click the last song in the list you want to select.

Transfer playlists

You can transfer playlists to your player via the automatic synchronization option of **Windows Media Player**. (See **Set up automatic synchronization** section in this user manual for step by step instructions.)

- 1 Select **Sync** tab.
- 2 Click **Sync settings** or **Setup Sync**, select **Synchronize device automatically** check box and select the playlists to be synchronized with the player.

Manage your songs and playlists in Windows Media Player

Delete songs and playlists from Windows Media Player library

- 1 Click to highlight an item.
- 2 Right click and select **Delete** to delete the item.

TIP It is not possible to delete playlists that are on your GoGear player via Windows Media Player. You can only delete the playlist via the player itself or via Windows Explorer.

Delete playlists via Windows Explorer

- 1 Connect the player to your computer.
- 2 Open **Windows Explorer**.
- 3 Select **Philips GoGear > Media > Music**.
- 4 Highlight the playlist you want to delete, right click and select **Delete**.

Edit song information via Windows Media Player

- 1 Select **Library** tab.
- 2 Highlight the song you want to edit, right click and select **Edit**.
- 3 Edit on the text box directly.

Search for songs via Windows Media Player

- 1 Select **Library** tab.
- 2 Type a search string in the search field.
- 3 Click **Search** to start searching.
- 4 A list of songs containing the search string will be displayed.
- 5 You can play, transfer, delete, add to sync list, etc.

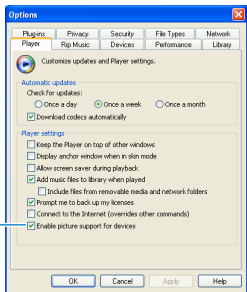
Photo transfer

IMPORTANT Make sure **Philips Device Plug-in** has been installed on your computer. This Plug-in is crucial to enable image support on your player. It is automatically installed from the supplied CD when you click **Install** in the **Install software** dialog box.

To check whether this Plug-in has been installed, go to **Control Panel > Add or Remove Programs** and verify if **Philips Device Plug-in** is listed.

Enable photo support

- 1 Start **Windows Media Player**.
- 2 Go to **Tools > Options > Player**.



- 3 Make sure the **Enable picture support for devices** check box is selected.

Add photos to Windows Media Player Library

- 1 Start **Windows Media Player**.
- 2 Select the **Library** tab to access the media library.
- 3 Click **Add to Library** on the bottom left corner of the screen.
- 4 Choose **Add Folder**.
- 5 Select the folder in which you have kept your photos and press **OK**.

Transfer photos to your player

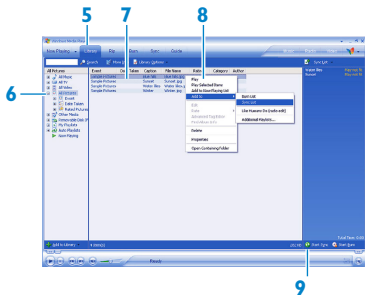
IMPORTANT Photos can only be transferred using **Windows Media Player**. You cannot transfer photos with **Windows Explorer**. Photos will not show on your player.

- 1 Connect the player to your computer.
- 2 Start **Windows Media Player**.



- 3 Select **Sync** tab.
- 4 In the pull-down menu on the right pane, select **Philips** or **Philips GoGear** as the destination.

If they are not in the list, click F5 to refresh and try again.

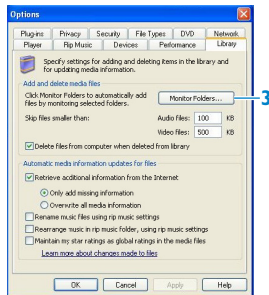
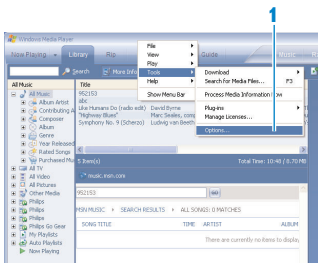


- 5 Select **Library** tab to access media library.
- 6 Click **All Pictures** on the left pane to display the list of photos.
- 7 Click to highlight a photo you want to copy to your player.

TIP To select multiple photos, you can highlight one of the photo you want first, press and hold CTRL key on your computer keyboard and highlight the other photos you want. To select all photos, you can highlight the first photo you want, press and hold SHIFT key on your computer keyboard and click the last photo you want.

- 8 Right click on the photo and select **Add to > Sync List**.
OR
Drag and drop the photo into the **Sync List** on the right pane.
- 9 Click **Start Sync** at the bottom of the screen to start synchronization.
> *The progress will be displayed just above the **Start Sync**.*
A pop-up message will be displayed, notifying you of the synchronization progress.

When the pop-up message disappears, the transfer is completed and you can disconnect your player.



To get the complete contents of your library for newly added content via WMP, you can perform:

- 1 Select **Tools > Options**.
- 2 Select **Library** tab.
- 3 Select **Monitor Folders** option.
- 4 Add folders that you usually keep your music and photos in.

Detailed operation

Music mode

Your player is preloaded with some songs. You can transfer your digital music and photo collection from your computer to your player using **Windows Media Player**. More information on music transfer can be found in **Organize and transfer photos and music with Windows Media Player 10** section in this user manual.

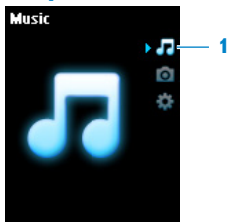
Controls

During music playback, you can do the following:

To	Do this
Play / Pause music	Press ►
Go to next song	Press ►►
Go to previous song	Press ◀◀
Forward search	Press and hold ►►
Backward search	Press and hold ◀◀
Access options menu	Press MENU key
Return to browsing	Press ◀
Increase volume	Press VOL +
Decrease volume	Press VOL -

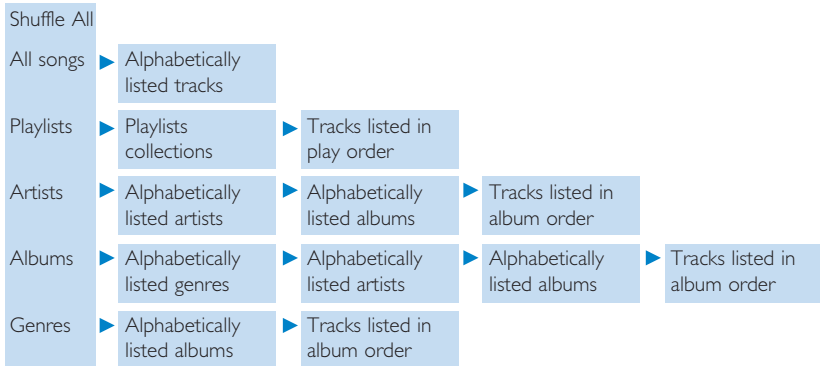
See **Vertical touch strip navigation** section for detailed instructions in accessing options menu.

Find your music



1 From the main menu, select **Music** to enter music mode.

You can search from the following music options:



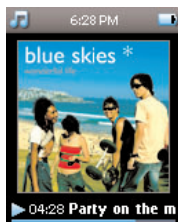
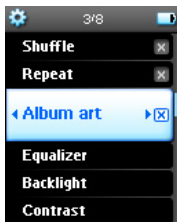
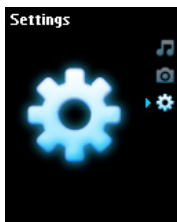
- 2 Use the [vertical touch strip](#) to scroll up or down the menu. (See **Vertical touch strip navigation** section in this user manual for details about how to access menu items by vertical touch strip.)
- 3 Press ▶ to select or press ◀ to return to previous level.
- 4 Press ▶|| to play your selection.

TIP Superplay™ allows you to playback the selected music or album immediately at any point by pressing ▶|| on the selection.

Album art

Your GoGear displays the album artwork for the song you are currently playing or when you are browsing through a list of songs or albums. You can choose to switch on / off the album art display feature in the Settings sub menu.

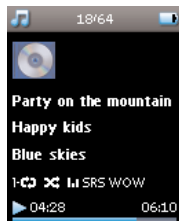
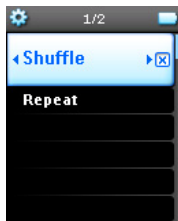
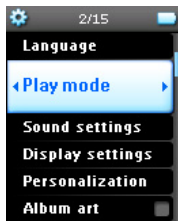
If no album artwork is available, it will show a standard CD cover icon.



Press ▶ to view album art in full screen mode or ◀ to return to normal play screen.

Play mode

You can set your player to play songs randomly (**Shuffle All** ) or repeatedly (**Repeat One**  or **Repeat All** ).



- 1 From the main menu, select **Settings > Play mode**.
- 2 Use the **vertical touch strip** to scroll up or down the options.
- 3 Press **▶** to select an option.
- 4 Press **▶** again to deselect an option.

While you are playing music, you can see the above active play mode screen.

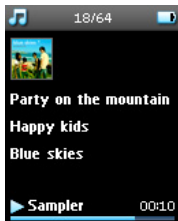
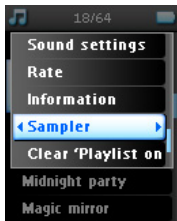
TIP You can also access the above play mode while you are playing music by pressing MENU key.

Digital Rights Management (DRM) Information

If you have songs that have been bought online stored on your player, from time to time you may see a message pop up "**Licence problem**". It is because the license for the song on the player may have expired and synchronizing with the computer will help to update this license with the latest information.

Use the Sampler

The Sampler is an exciting way of discovering music on your player. It can be started by accessing the contextual menu from the music library. This is available only from certain options.



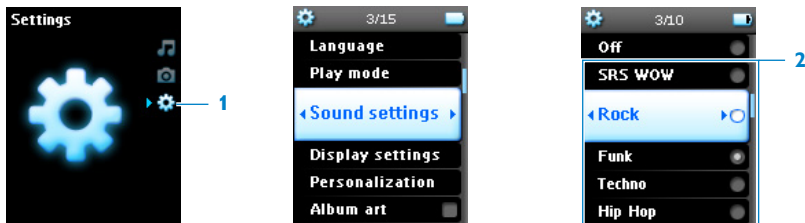
The Sampler can allow you to play all the items in your selection (Playlists, Albums, Artists, etc.) once. The playtime will be limited to 10 seconds. In case you have a licensed song with a limited playcount, using the sampler will reduce the available playcount for this song.

- 1 You can skip forwarding or replay a song by pressing **⏮** or **⏭** in the sampler.
- 2 Once you reach a song that you like, press **⏸** in Sampler mode will stop the Sampler function and start normal playback.
- 3 Press **⏪** to exit the Sampler mode.

Songs are played in the order from the level that you have entered the Sampler.

Sound settings

Set your player to play songs with different EQ (equalizers) settings.



- 1 From the main menu, select **Settings > Sound settings**.
- 2 Use the **vertical touch strip** to scroll through the list of options: **SRS WOW**, **Rock**, **Funk**, **Techno**, **HipHop**, **Classical**, **Jazz**, **Spoken Word**, **Custom**, or **Off**. You can select one of them.

Custom settings allow you to specify your desired equalizer settings by adjusting the individual settings for bass (B), low (L), mid (M), high (H) and treble (T).

- 3 Press **▶** to select.

TIP While you are playing the music, you can also change the **EQ settings** (except **Custom** settings) by pressing **MENU > Sound settings**.

Playlist on the go

Playlist on the go is a playlist that can be created on the player while on the move.

All songs will be displayed and listed in play order in the playlist. New songs are automatically added to the end of the playlist.

Add songs to playlist on the go

You can add your favorite songs, albums, artists and genres to **Playlist on the go** during music playback.



- 1 Press **MENU** key.
- 2 Select **Add to Playlist on the go**.
 - > A message *[item name] added to playlist on the go* will be displayed.

Alternatively, you can add songs, albums, artists and genres to **Playlist on the go** from the music library of your GoGear player.

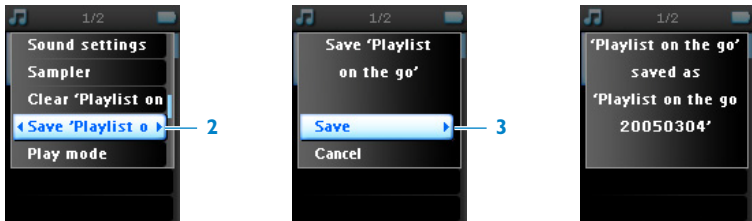
- 1 Press **MENU** key and select **Add to Playlist on the go**.
 - > A message *[item name] added to playlist on the go* will be displayed.

Play back playlist on the go

- 1 Select **Music > Playlists > Playlist on the go**.
- 2 Select your playlist and press **▶||**.

Save Playlist on the go

You can save Playlist on the go. It will be saved under a different name and **Playlist on the go** will be emptied.



- 1 During music playback, press **MENU** key.
- 2 Select **Save 'playlist on the go'**.
> A message **Save 'playlist on the go'?** will be displayed.
- 3 Select **Save** to confirm.
> A message **'Playlist on the go' saved as: 'Playlist-on-the-go'[date-number]!** will be displayed.

Clear playlist on the go

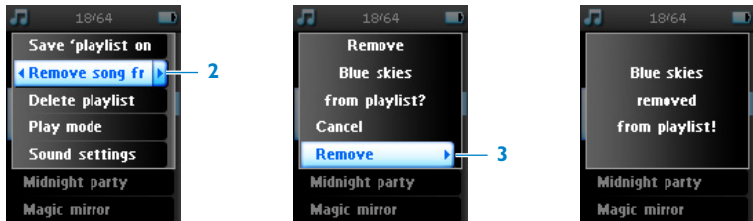
You can clear all the songs in **Playlist on the go**.

- 1 Select **Music > Playlists > Playlist on the go**.
- 2 Press **MENU** key and select **Clear 'Playlist on the go'**.
- 3 Select **Clear** to confirm clearing all the songs in the selected Playlist on the go, or select **Cancel** to return to the previous menu.

TIP This will empty **Playlist on the go** but will **NOT** delete those songs from your player.

Remove songs from Playlist on the go

You can delete specific songs from **Playlist on the go**.



1 Select the song from **Music > Playlists > Playlist on the go**.

2 Press **MENU** key and select **Remove song from list**.

> A message **Remove [song name] from playlist?** will be displayed.

3 Select **Remove** to delete the song from Playlist on the go.

> A message **[song name] removed from playlist** will be displayed.

The song is removed from the playlist only, it will not be deleted from the player.

Most played

You can playback your top 100 most played songs by selecting this playlist.

1 From the main menu, select **Music > Playlists > Most played**.

> The list shows the 100 most played songs on your player. The first song in the list is the most played song.

2 Reset the play count to 0 via **Settings > Music library settings > Reset play count**.

Other playlists

You can transfer playlists to the player using **Windows Media Player**. See **Manage your Windows Media Player playlist - Transfer playlists** section in this user manual for details.

Delete playlist from your player

You cannot delete the playlist on your player via **Windows Media Player**. You have to do it via the player itself.

- 1 Play the playlist you want to delete.
- 2 Press **MENU** key.
- 3 Select **Delete playlist**.
 - > A message **Delete [playlist name]?** will be displayed.
- 4 Select **Delete**.
 - > A message **[playlist name] deleted!** will be displayed.

Rate your songs

You can rate a song with 1 to 5 stars.

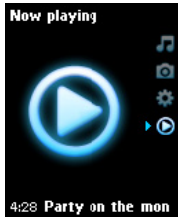


- 1 Select the song from the music library.
- 2 Press **MENU** key and select **Rate**.
- 3 Rate the song from ★ to ★★★★★ .

> Next time when you connect your player to your computer and start **Windows Media Player**, the rating of your songs in **Windows Media Player** will be updated with the information from your player.

Now playing

You can browse your music library or photos while you are listening to music.

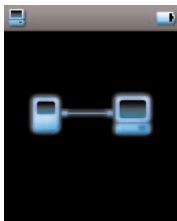


To go back to the play screen, press ◀ to navigate back to the main menu and select **Now playing**.

Photos

You can view your favorite photos on your player. While you are browsing your photos, you can listen to music at the same time.

Transfer photos from your computer to your player



You can transfer photos from your computer to your player using **Windows Media Player**. See **Organize and transfer photos and music with Windows Media Player 10** section in this user manual for details.

Transfer photos from your player to your computer

- 1 Connect the player to your computer.
> Your player will be identified as **Philips** or **Philips GoGear** in **Windows Explorer**.
- 2 Go to **Media > Pictures**.
- 3 Drag and drop your photos to any desired location on your computer.

Find photos on your player

Photos on your player are organized in albums which are similar to the way they are organized in **Windows Media Player**.



Fig1



Fig2

- 1 From the main menu, select **Photos**.
> You will see a list of all photo albums.
- 2 Select the photo album you wish to view.
> You will see a thumbnail view (Fig1) of all photos in that album.
- 3 Use the **vertical touch strip** to scroll and select a photo to see its full view (Fig2).
- 4 Tap on the top or the bottom end of the **VERTICAL TOUCH STRIP** to go to the next or previous photo.

Personal Image

When the personal image function is enabled in **Settings > Personalization > Personal image**, the currently highlighted photo in the photo album of your player will be set as the personal image.

Setting personal image is only available through the contextual menu.

Philips Photo Fixer

If you have checked that all the above but do still have problems in viewing your pictures on your player, you can use the **Philips Photo Fixer**.

On your computer:

- 1 Go to **Start > Programs > Philips > Philips Photo Fixer**.
- 2 Connect your player to the computer.
- 3 Follow the on-screen instructions.

Slideshow

A slideshow will display all photos inside an album in full view. It will automatically go to the next photo at a specified interval. Background music can be played from a specified playlist during a slideshow.

Start a slideshow

- 1 From the main menu, select **Photos**.
- 2 Select the photo album you wish to view.
- 3 Press **MENU** key and select **Start slideshow**.

You can start slideshow in album list, thumbnail view or full view.
You can stop the slideshow by pressing ◀.

Customize slideshow settings

Settings	Options	Descriptions
Slideshow music	Alphabetical playlists / None	Choose which playlist to play in the background while playing slideshow
Transitions	Off / Vertical wipe / Fade	Choose the transition effect between slides
Set time per slide	2 Seconds / 4 Seconds / 6 Seconds / 8 Seconds / 10 Seconds / 20 Seconds / 40 Seconds / 60 Seconds	Choose to set time between slides
Shuffle slideshow	On / Off	Choose to show slides at random or in album order
Repeat slideshow	On / Off	Choose to repeat slides

Slideshow music

You can play background music during a slideshow by assigning a playlist in **Slideshow settings**. You can choose to play any playlist during a slideshow.

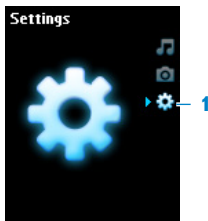
- 1 From the main menu, select **Photos**.
- 2 Press **MENU** key and select **Slideshow settings** > **Slideshow music** and choose one of the playlists.

During a slideshow, you cannot pause, skip or fast forward / rewind your music.

TIP The slideshow settings allow for timed slideshows. In case you would like to control your slideshow, we suggest that you view your images in full screens and move forward and backward as you like. The music you played earlier will continue to play.

Settings

The settings menu allows you to make adjustments and personal preferences on your GoGear player.



- 1 From the main menu, select **Settings**.
- 2 Use the [vertical touch strip](#) to select an option.
- 3 Press ► to go to the next level or ◀ to return to previous level.
- 4 Press ► to confirm your selection.
- 5 Press ◀ to exit the Settings menu.

In the **Settings** menu, the following options are available:

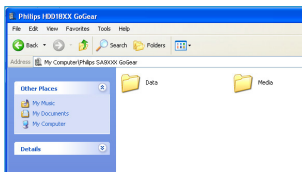
Settings	Options	More options	Description
Language	English, French, Italian, German, Spanish, Dutch, Swedish, Portuguese, Simplified Chinese, Traditional Chinese, Korean, Japanese		Choose the language for display on screen.

Settings	Options	More options	Description
Play mode	Shuffle All		Enable the checkbox to play selected songs at random.
	Repeat		Choose Repeat one or Repeat all to keep looping selected songs.
Sound settings	Off, SRS WOW, Rock, Funk, Techno, HipHop, Classical, Jazz, Spoken word, Custom		Choose the equalizer for best music experience.
Display settings	Backlight	10 Sec. / 30 Sec. / 45 Sec. / 60 Sec.	Choose the time for backlight display.
	Brightness	25 levels	Choose the contrast level to adjust the brightness.
Personalization	Skins	Skin 1 / Skin 2	Personalize your player with your favorite skin.
	Personal Image	On / Off	Display an image of your choice every time you switch on your player.
Album Art	On / Off		Enable the checkbox to display album art for the song that you are playing.
Sleep timer	Off / 15 Min / 30 Min / 1 Hour / 1.5 Hour / 2 Hours		Choose sleep timer to turn off your player automatically after 15, 30, 60, 90 or 120 minutes.

Settings	Options	More options	Description
Date and time	Set date	Day / Month / Year	Enter day, month and year to set the date in your player.
	Set time	Hour / Minute / Second	Enter hour, minute and second to set the time in your player.
	Show time in header		Enable the checkbox to display the time at the top of the screen.
Clicker sound	Device		Enable the checkbox to hear clicker sound from the player when you touch the touchpad or buttons.
	Headphones		Enable the checkbox to hear clicker sound via the headphones when you touch the touchpad or buttons.
Information	Information summary	Capacity, Available space, Device ID, FW version, Support site	Display information of your player.
	Call centers		Display call center contact numbers.
Reset play count	Reset / Cancel		Select Reset to reset play count for “Most played” playlist to zero.

Settings	Options	More options	Description
Demo mode	Demo mode	Start / Cancel	Uncheck this option to disable demo mode .
	Start demo		Press ► to start demo mode . You can simply touch any key on the front of the player to exit this mode.
Factory settings	Restore factory settings	Restore / Cancel	Choose Restore to clear your player's current settings and restore to default factory settings.

Use your player to store and carry data files



You can use your player to store and carry data files by copying data files into the **Data** folder of your player via **Windows Explorer**.

Data files stored in the Data folder cannot be read directly from your player. These data files can only be read in your computer after you transfer them from your player to your computer.

Upgrade your player

Your player is controlled by an internal program called firmware. New versions of the firmware may be released after you have purchased your player.

A software program called **Philips Device Manager** will monitor the firmware status of your player and notify you if new firmware is available. You need an Internet connection for this.

Install **Philips Device Manager** from the supplied CD or download the latest version from www.philips.com/support or www.philips.com/usasupport (for U.S. residents)

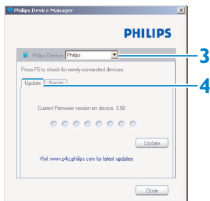
After the installation of **Philips Device Manager**, every time you connect your player to your computer, **Philips Device Manager** will automatically connect to the Internet and check for updates.

Manually verify whether your firmware is up to date

Make sure your player is charged fully.

- 1 Connect your player to the computer.
- 2 Launch **Philips Device Manager** from **Start > Programs > Philips Device Manager**.





3 Select your device.

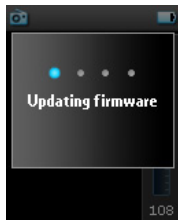
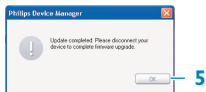
4 Click **Update**.

> **Philips Device Manager** will check whether a new firmware is available on the Internet and install it on your player.

5 When **Update completed** appears on the screen, click **OK** and disconnect the player.

> A message **Updating firmware** will be displayed.

The player will automatically restart after firmware is completely updated. Your player is now ready to use again.



Troubleshooting

My player skips songs.

The skipped song may be protected. You may not have sufficient rights to play the skipped song on your player. Check the music rights with the song provider.

My player is not recognized by Windows.

Make sure your computer is running **Windows XP** (SP2 or higher).

My player cannot power on.

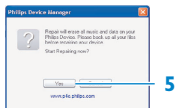
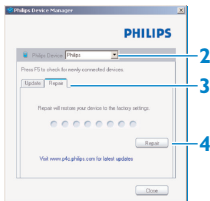
Your device battery may be out of power due to long period of non-usage. Please charge your player.

In case of device error, connect your player to the computer and use **Philips Device Manager** to restore your player.

IMPORTANT All your contents will be erased from your player after completion of repair process. Therefore, please backup your files before repairing. After repair, simply synchronize your player again to transfer music to your player.

1 Launch **Philips Device Manager** from **Start > Programs > Philips Device Manager**.





2 Select your device.

3 Select **Repair** tab.

4 Click **Repair**.

> *The repair process will start.*

5 Click **Yes** to proceed.

6 After the repair process is completed, click **OK** and disconnect your player.

> *The player will automatically restart after firmware is completely updated. Your player is now ready to use again.*

There is no music on my player after transfer.

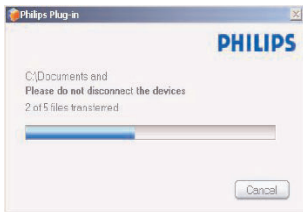
If you cannot find the songs that you have transferred to your player, check the following:

- Did you transfer using **Windows Media Player**? Files transferred via other means will only be recognized as data files. They will neither appear in the music library of your player nor can the songs be played.
- Are your songs in MP3 or WMA format? Other formats will not playback on the player.

There are no photos on my player after transfer.

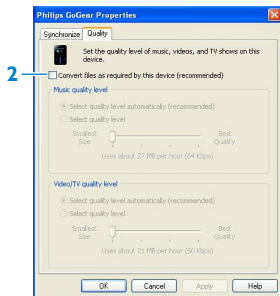
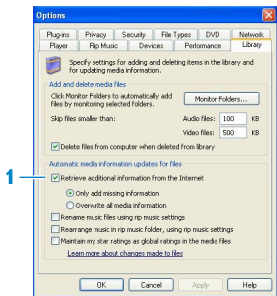
If you cannot find the photos that you have transferred to your player, check the following:

- Did you transfer your photos using **Windows Media Player**? Files transferred via other means will not appear on your device.



- Is the **Philips Device Plug-in** installed on your computer? Immediately after you have transferred your photos in **Windows Media Player**, you should see a **Philips** screen pop-up. If it does not appear, then the Plug-in is probably missing. To check whether this Plug-in is available on your computer, go to **Control Panel > Add or Remove Programs** and check if **Philips Device Plug-in** is listed. If not, re-install the software from the supplied CD.
- You may have disconnected your device too soon after the photo transfer in **Windows Media Player** was finished. Always wait for the **Philips** pop-up message to show and disappear before you disconnect your device.
- Are your photos in JPEG format? Photos in other formats cannot be transferred to your player.

I cannot see album art on my GoGear player.



- 1 Make sure **Retrieve additional information** from the Internet tab is selected. This will ensure that your songs have the album art information also updated.
- 2 Connect your device and in the device properties pane, select **Quality** tab and ensure that **Convert files as required by this device** checkbox is deselected.

My GoGear player hangs.

- 1 In the unlikely event that your player hangs, do not panic. Insert a small pin or other sharp object into the reset hole located at the back of the player. Hold until the player shuts down.

The existing contents on your player will not be erased.

- 2 If nothing happens, recharge the battery for at least 4 hours and try to power on or reset again. If this does not work, you might have to repair your player with **Philips Device Manager**. (See **Upgrade your player** section in this user manual for details.)

My player is full and I have fewer songs on my player than I expected.

Your player has an internal memory to store songs. Check your model number to see the actual memory size. You will be able to store more songs on your player if you use WMA formatted songs in 64kbps⁺ with variable bitrate.

⁺*Storage capacity based on 4 minutes per song and 64kbps WMA encoding.*

Important safety information

General maintenance

To avoid damage or malfunction:

- Do not expose the player to excessive heat caused by heating equipment or direct sunlight.
- Do not drop your player or allow objects to fall on your player.
- Do not allow your player to be submerged in water. Do not expose headphone socket or battery compartment to water, as water entering the set may cause major damage.
- Do not use any cleaning agents containing alcohol, ammonia, benzene, or abrasives as these may harm the set.
- Active mobile phones in the vicinity may cause interference.
- Backup your files. Please ensure that you retain the original files you have downloaded to your device. Philips is not responsible for any loss of data if the product becomes damaged or not readable / legible.
- Manage (transfer, delete, etc.) your music files only with the supplied music software to avoid problems!

About operating and storage temperatures

- Operate in a place where temperature is always between 0 and 35°C (32 to 95°F)
- Store in a place where temperature is always between -20 and 45°C (-4 to 113°F)
- Battery life may be shortened in low temperature conditions.

Hearing Safety

Listen at a moderate volume.

- Using headphones at a high volume can impair your hearing. This product can produce sounds in decibel ranges that may cause hearing loss for a normal person, even for exposure less than a minute. The higher decibel ranges are offered for those that may have already experienced some hearing loss.
- Sound can be deceiving. Over time your hearing “comfort level” adapts to higher volumes of sound. So after prolonged listening, what sounds “normal” can actually be loud and harmful to your hearing. To guard against this, set your volume to a safe level before your hearing adapts and leave it there.



To establish a safe volume level:

- Set your volume control at a low setting.
- Slowly increase the sound until you can hear it comfortably and clearly, without distortion.

Listen for reasonable periods of time:

- Prolonged exposure to sound, even at normally “safe” levels, can also cause hearing loss.
- Be sure to use your equipment reasonably and take appropriate breaks.

Be sure to observe the following guidelines when using your headphones.

- Listen at reasonable volumes for reasonable periods of time.
- Be careful not to adjust the volume as your hearing adapts.
- Do not turn up the volume so high that you can't hear what's around you.
- You should use caution or temporarily discontinue use in potentially hazardous situations.
- Do not use headphones while operating a motorized vehicle, cycling, skateboarding, etc.; it may create a traffic hazard and is illegal in many areas.

Important (for models supplied with headphones):

Philips guarantees compliance with the maximum sound power of its audio players as determined by relevant regulatory bodies only with the original model of provided headphones. In case this one needs replacement, we recommend that you contact your retailer to order a model identical to that of the original, provided by **Philips**.

Copyright information

All other brands and product names are trademarks of their respective companies or organizations.

Unauthorized duplication of any recordings whether downloaded from the Internet or made from audio CDs is a violation of copyright laws and international treaties.

The making of unauthorized copies of copy-protected material, including computer programmes, files, broadcasts and sound recordings, may be an infringement of copyrights and constitute a criminal offence. This equipment should not be used for such purposes.

This product is protected by certain intellectual property rights of Microsoft Corporation. Use or distribution of such technology outside of this product is prohibited without a license from Microsoft or an authorized Microsoft subsidiary.

Content providers are using the digital rights management technology for Windows Media contained in this device ("WM-DRM") to protect the integrity of their content ("Secure Content") so that their intellectual property, including copyright, in such content is not misappropriated. This device uses WM-DRM software to play Secure Content ("WM-DRM Software"). If the security of the WM-DRM Software in this device has been compromised, Microsoft may revoke (either on its own or upon the request of the owners of Secure Content ("Secure Content Owners")) the WM-DRM Software's right to acquire new licenses to copy, display and/or play Secure Content. Revocation may also prevent your device's ability to transfer, store, copy, display and/or play Secure Content which you have previously stored on your Device. Revocation does not alter the WM-DRM Software's ability to play unprotected content. A list of revoked WM-DRM Software is sent to your device whenever you download a license for Secure Content from the Internet or from a PC. Microsoft may, in conjunction with such license, also download revocation lists onto your device on behalf of Secure Content Owners, which may disable your device's ability to copy, display and/or play Secure Content.

In the event of revocation, Philips will attempt to make available software updates to restore some or all of your device's ability to transfer, store, access, copy, display and/or play Secure Content. However, the ability to make such updates available does not rest solely with Philips. Philips does not guarantee that, after revocation, such software updates will be available. If such updates are not available, your device will not have the ability to transfer, store, copy, display and/or play Secure Content - even Secure Content which you have previously stored on your

device.

In addition, even if such software updates are available, they may not enable your Device to transfer, store, copy, display, and/or play Secure Content which was previously stored on your Device. In some cases you may be able to transfer the content from the PC. In other cases, you may have to repurchase previously obtained Secure Content.

To summarize - Microsoft, Secure Content Owners, and Secure Content distributors may deny you access, or restrict your access, to Secure Content. They may also disable your device's ability to transfer, store, copy, display and/or play Secure Content even after you have paid for and obtained it. Neither your consent nor the consent or approval of Philips is necessary for any of them to deny, withhold or otherwise restrict your access to Secure Content or to disable your device's ability to transfer, store, access, copy, display, and/or play Secure Content. Philips does not guaranty that you will be able to transfer, store, access, copy, display, and/or play Secure Content.

The PlaysForSure, Windows Media and the Windows logo are registered trademarks of Microsoft Corporation in the United States and/or other countries.

Data logging

Philips is committed to improving the quality of your product and enhancing the Philips user experience. To understand the usage profile of this device, this device logs some info / data to the non-volatile memory region of the device. These data are used to identify and detect any failures or problems you as a user may experience while using the device. The data stored, for example, will be the duration of playback in music mode, duration of playback in turner mode, how many times battery low was encountered, etc. The data stored do not reveal the content or media used on the device or the source of downloads. The data stored on the device are retrieved and used ONLY if the user returns the device to the Philips service centre and ONLY to simplify error detection and prevention. The data stored shall be made available to user on user's first request.

Disposal of your old product

Your product is designed and manufactured with high quality materials and components, which can be recycled and reused.



When this crossed-out wheeled bin symbol is attached to a product, it means the product is covered by the European Directive 2002/96/EC.

Please be informed about the local separate collection system for electrical and electronic products.

Please act according to your local rules and do not dispose of your old product with your normal household waste. The correct disposal of your old product will help prevent potential negative consequences to the environment and human health.

Modifications

Modifications not authorized by the manufacturer may void user authority to operate this device.

Notice for USA



Note:

This equipment has been tested and found to comply with the limits for a Class B digital device, pursuant to part 15 of the FCC Rules. These limits are designed to provide reasonable protection against harmful interference in a residential installation. This equipment generates, uses, and can radiate radio frequency energy and, if not installed and used in accordance with the instruction manual, may cause harmful interference to radio communications.

However, there is no guarantee that interference will not occur in a particular installation. If this equipment does cause harmful interference to radio or television reception, which can be determined by turning the equipment off and on, the user is encouraged to try to correct the interference by one or more of the following measures:

- Relocate the receiving antenna.
- Increase the separation between the equipment and receiver.
- Connect the equipment into an outlet on a circuit different from that to which the receiver is connected.
- Consult the dealer or an experienced radio/ TV technician for help.

Notice for Canada

This Class B digital apparatus complies with Canadian ICES-003.

The set complies with the FCC-Rules, Part 15 and with 21 CFR 1040.10. Operation is subject to the following two conditions:

- This device may not cause harmful interference, and
- This device must accept any interference received, including interference that may cause undesired operation.

Notice for the European Union

This product complies with the radio interference requirements of the European Union.

Technical data

Power supply	600mAh Li-ion internal rechargeable battery**	
Multi-voltage charger / adaptor:	4 hours full charge; 1 hour fast charge	
Dimensions	90 x 46 x 9mm	
Weight	48g	
Picture / Display	White backlight LCD 128 x 160 pixels 65K colors	
Sound	Channel separation	35dB
	Equalizer settings	SRS WOW, Rock, Funk, Techno, HipHop, Classical, Jazz, Spoken word, Custom
	Frequency response	20-16000Hz
	Signal to noise ratio	> 82dB
	Output Power (RMS)	2x10mW

Audio Playback

Play time	20 hours**
Compression format	MP3 (8-320kbps and VBR) WAV WMA (32-192kbps; Sample rates: 8, 11.025, 16, 22.050, 24, 32, 44.1, 48kHz)
ID3-tag support	Album title, Genre title, Track title and artist name

Storage Media

Built-in memory capacity	SA9100 1GB NAND Flash ⁺ SA9200 2GB NAND Flash ⁺
Connectivity	Headphone 3.5mm, USB 2.0 ⁺⁺ , Philips dock connector, 5V DC
Music and photo transfer	Via Windows Media Player 10
Data transfer	Via Windows Explorer
System Requirements	Windows® XP (SP2 or above) Pentium Class 300MHz processor or higher 128MB RAM 500MB hard disk space Internet connection Microsoft Internet Explorer 6.0 or later Video display card Sound card USB port

****** Rechargeable batteries have a limited number of charge cycles and may eventually need to be replaced. Battery life and number of charge cycles vary by use and settings.

+ 1MB = 1 million bytes; available storage capacity will be less.
1GB = 1 billion bytes; available storage capacity will be less.
Full memory capacity may not be available as some memory will be reserved for the player.
Storage capacity based on 4 minutes per song and 64kbps WMA encoding.

++ Actual transfer speed may vary based on your operating system and software configuration.

Glossary

Album	A collection list of songs / photos.
Contextual menu	A menu consisting of executable action / feature with respect to current status.
Digital Rights Management (DRM)	A technology that provides a persistent level of protection to digital content by encrypting it with a cryptographic key. Authorized recipients (or end users) must acquire a license in order to unlock and consume the content.
Flywheel	A Superscroll™ concept using the metaphor and the physics of wheel, i.e. energy input defines speed, deceleration.
Genres	A particular style or type of music.
MP3	An audio compression format known as MPEG-1 Audio Layer 3.
Photo	Image, photo and picture in JPEG file format.
Playlist	A list of digital media contents.
Playlist on the go	A playlist that can be created on the player by adding favorite songs, albums, artists and genres during music playback.
Rip	To copy digital media content from an audio CD. Content may be converted to a different format during a ripping process.
Root menu	The main menu that sits on top of the user interface structure tree.
Sampler	Audio tracks preview mode that plays a short clips of different songs.
Skin	A user interface that provides an alternative appearance and customized functionality.

Songs	An individual track or a discrete piece of audio content.
Superscroll™	A Philips trademark user interface navigator feature to enhance the speed of browsing long list of content.
Synchronization	The process of maintaining digital media files on a portable device based on the rules specified by the users. This may require copying digital media files from a computer to a device, updating information on the device or deleting files from the device.
Thumbnail	A small version of the main image, used for indexing and browsing.
Title	The largest unit of digital media content. For CD, it may be the name of the CD.
Vertical touch strip	The control keys that are used to enable scrolling up/down a list.
WAV	A digital media file format for storing sound.
Windows Media Audio (WMA)	An audio file in Windows Media Format. The audio content of the file is encoded with one of the Windows Media Audio codecs.

PHILIPS reserves the right to make design and specification changes for product improvement without prior notice.



Be responsible
Respect copyrights

Specifications are subject to change without notice.
Trademarks are the property of Koninklijke Philips Electronics N.V.
or their respective owners

2006 © Koninklijke Philips Electronics N.V. All rights reserved.

www.philips.com

wk6241



Printed in China