

**User's Manual**  
**ver. 1.0 (EN)**



●  
**AUDIO<sub>6</sub>**

**B&W**  
Mach3Bass

**MP3**  
DIGITAL AUDIO

**Ogg**  
VOCAL MUSIC

**Windows Media**

**Mac OS**

**LDB**  
LIFE DATA BASE

**JetAudio**



## Legal Notice

- COWON is a registered trademark of COWON SYSTEMS, INC.
- This product is intended for personal use only and may not be used for any commercial purpose without the written consent of COWON SYSTEMS, INC.
- Information in this document is copyrighted by COWON SYSTEMS, INC. and no part of this manual may be reproduced or distributed without the written permission of COWON SYSTEMS, INC.
- The software described in this document including JetShell and JetAudio are copyrighted by COWON SYSTEMS, INC.
- JetShell and JetAudio may only be used in accordance with the terms of license agreement and cannot be used for any other purposes.
- The media conversion feature in JetShell and jetAudio may only be used for personal use only. Use of this feature for any other purposes may be considered a violation of the international copyright law.
- COWON SYSTEMS, INC. complies with the laws and regulations related to records, videos and games. Complying with all other laws and regulations regarding consumer use of such media is the responsibility of the users.
- Information in this manual including contents of product features and specifications is subject to change without notice as updates may be made.
- This product has been produced under the license of BBE Sound, Inc. (USP4638258, 5510752 and 5736897). BBE and the BBE symbol are the registered trademarks of BBE Sound, Inc.

## On-line registration and support

- Users are strongly encouraged to complete customer registration at <http://www.iAUDIO.com>. After filling out our customer registration form using the CD-Key and serial numbers, you can receive various benefits offered only to official members.
- Each CD-key is unique and will not be re-issued in case of loss.
- Further information regarding the product can be found on the web: <http://www.iAUDIO.com>
- Users will be able to find the latest information for other COWON products and download the latest updates for firmware and software.
- Frequently Asked Questions and Answers can be found on the website.

DIGITAL PRIDE™

**COWON**

All rights reserved by COWON SYSTEMS, Inc. 2006

**iAUDIO 6**

<b>Safety Tips</b>	<b>6</b>
<b>1) Introducing iAUDIO 6</b>	<b>8</b>
1.1 iAUDIO 6 at a Glance	
1.2 Package Contents	
1.3 Features and Specifications	
1.4 Identifying the Parts	
1.5 Description of OLED Display	
1.6 Charging iAUDIO 6	
1.7 Windows 98 Driver Installation	
1.8 Connecting to PC and Transferring Files	
1.9 Firmware Upgrade	
<b>2) Using iAUDIO 6</b>	<b>21</b>
2.1 Basic Controls	
2.2 Switching Between Modes	
2.3 Navigating through Files and Folders	
2.4 Changing Settings	
2.5 Using Pop-Up Window	
<b>3) Using Advanced Features</b>	<b>25</b>
3.1 Playing Audio and Video Files	
3.2 Listening to FM Radio	
3.3 Recording Using Built-In Microphone or Line-In Connection	
3.4 Viewing Images	
3.5 Reading Texts	
3.6 Transferring Files Using USB Host Mode	
3.7 Summary of Controls	

<b>4) Using Advanced Settings</b>	<b>37</b>
4.1 Settings Menu List	
4.2 JetEffect	
4.3 Play Mode	
4.4 Display	
4.5 Timer	
4.6 General	
4.7 Recording	
4.8 FM Radio	
4.9 Information	
<b>5) Additional Information</b>	<b>45</b>
5.1 Resetting to Factory Default Settings	
5.2 Installation CD Contents	
5.3 Converting Video Using jetAudio VX	
5.4 JetShell Software	
<b>Troubleshooting</b>	<b>60</b>

## Safety Tips

- Do not use this product for any purpose other than described in this document.
- Use caution opening the contents of the package to avoid injuries.
- Avoid any exposure to extreme moisture. Damage from moisture constitutes user's negligence and will not be covered by manufacturer's warranty.
- Disassembling or modifying the device will void any warranty.
- Make sure the USB connection is made correctly to avoid any damage to the device or the PC. Avoid extreme bending or pressuring the connection.
- Avoid any excessive force or impact. If there is an unusual odor such as burning smell or excessive heating during use, stop using the device immediately and contact us through [www.iAUDIO.com](http://www.iAUDIO.com).
- Do not use the player with wet hands as it may cause damage and malfunctions.
- Do not listen to the player at excessively high volume for long period of time.
- Avoid using the player at a location where static electricity is frequent.
- Before any repair service, you should back up all data from the player. COWON SYSTEMS, INC. shall not be liable for any loss of data or files during the repair.
- Only use the AC adapter and USB cable provided by COWON SYSTEMS, INC.
- During lightning or thunderstorms, disconnect the player from the PC or AC adapter to avoid a risk of power surge or fire hazard.
- Store the player away from direct sunlight, excessive heat, fire and extreme cold environments. Excessive temperature can damage the exterior, interior circuits or the display.
- When using the player as a portable storage device, important data should be backed up as frequently possible. COWON SYSTEMS, INC. shall not be responsible for any unexpected data loss.
- Price of the player may fluctuate depending on the market condition, COWON SYSTEMS, INC. shall not compensate for any loss caused by price fluctuation.

## 1.1 iAUDIO 6 at a Glance

iAUDIO 6 is a unique multimedia player developed and manufactured by COWON SYSTEMS, Inc. It is a portable compact digital audio/video device that plays media files such as MP3 audio and MPEG4 video files. iAUDIO 6 also offers FM radio listening/recording, voice recording, and direct encoding through a built-in microphone or Line-in input jack, viewing texts and images, and OTG(USB Host) capabilities.

### **Highly portable, stylish and super-slim design**

iAUDIO 6's ultra-slim size of 76.1 X 35.6 X 19 mm (projecting part excluded) provides high portability and convenience.

### **0.85 inch Hard Drive Storage MP3 Player**

As the world's first MP3 player using 0.85 inch hard drive, iAUDIO 6 can store up to 200 folders and 2000 files.

### **20 hours of continuous playback with the embedded lithium polymer battery**

The ultra power-saving circuit of iAUDIO 6 enables up to 20 hours of continuous playback with a fully charged battery. (Based on company test results.)

### **Audio playback**

It supports various popular digital audio formats including MP3, OGG, WMA, WAV and FLAC (Free Lossless Audio Codec).

### **Movie playback**

Video files of up to 15 frames per second can easily be converted and transferred with JetAudio VX. Transferred video files can be viewed in iAUDIO 6.

### **Text and image viewing**

Easily view text and image files with iAUDIO 6. Text files can also be viewed while listening to music.

### **USB Host (OTG)**

The USB Host capability of iAUDIO 6 allows direct downloading of images from digital cameras (\*Not all digital cameras are supported for this feature.)

### **Voice recording**

Voice recording available using the built-in microphone or connecting an external microphone. This feature is particularly convenient for recording meetings or lectures.

# Introducing iAUDIO 6

## **Direct encoding (Line-in recording)**

iAUDIO 6 provides a direct encoding feature that accepts an external audio source for 1:1 recording. iAUDIO can directly accept through its Line-In jack any music from an audio device such as a Walkman, MD (mini disk), old LP phonographs, or TV. iAUDIO can convert external analog audio signals and store in iAUDIO.

## **Listening/Recording of FM broadcasts**

You can listen to FM radio broadcasts and record them at the same time. You can also save Preset channels for easy selection of your favorite FM radio stations.

## **Wide and vivid color OLED**

With 1.3 inch and 260 thousand color OLED (Organic Light Emitting Diode), you can conveniently check the operational status of iAUDIO 6.

## **World's most powerful sound effects**

iAUDIO 6 provides the most unique, powerful and high quality sound, which is recognized worldwide. You can take advantage of the following sound effects to suit your favorite music:

BBE: Sound effects that provide the clearest music.

Mach3Bass: A bass booster that enhances super low-end bass.

MP Enhance: Sound effects that compensate for missing sound segments in MP3s.

3D Surround: Three-dimensional surround sound effect.

## **Upgradeable firmware**

We may occasionally release firmware upgrades to incorporate improvements to the device and suggestions that users provide to us. You can easily upgrade your iAUDIO 6 with the firmware download feature.

## **Portable Storage Device**

iAUDIO 6 is immediately recognized by a PC as a removable drive as soon as it is connected to a PC through a USB cable. No software installation is required to use it as a storage device.

## **JetAudio provided**

World famous integrated multimedia playback software, JetAudio Basic VX is included in your package. Without using any other additional program, you can easily convert videos for iAUDIO 6 using the conversion tool in JetAudio.



## 1.2. Package Contents



Quick Guide, Installation CD



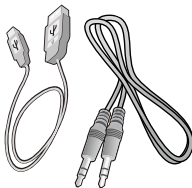
Earphone



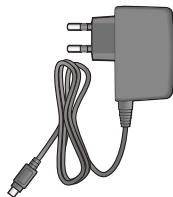
iAUDIO 6



USB Host Cable



USB Cable, Line-In Cable



AC Adapter (Optional)

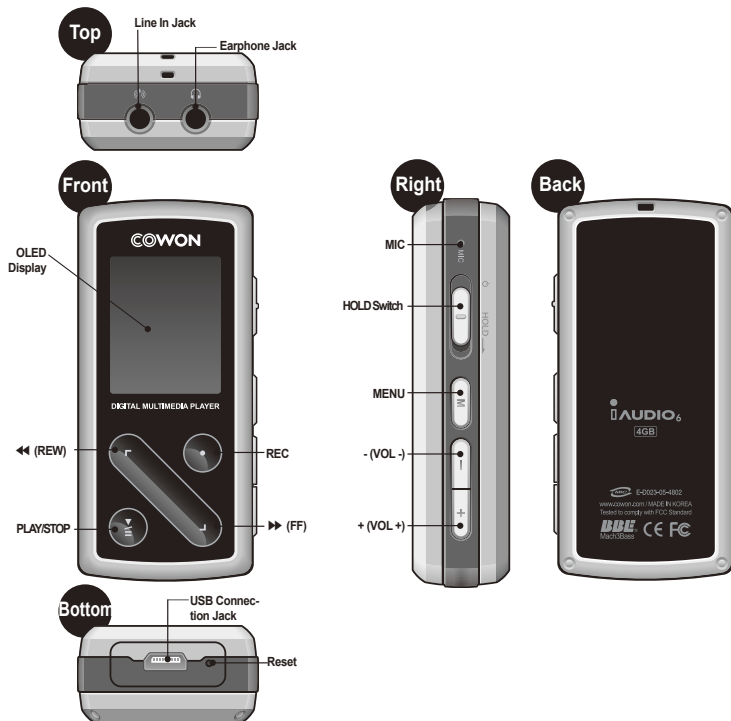
## 1.3. Features and Specifications

- MP3, OGG, WMA,, ASF, FLAC, WAV, MPEG4 (video) playback, FM Radio listening and recording, voice recording, Line-In recording
- TXT(Text), JPEG(Image) File Viewer (Image Zoom, Wallpaper)
- 0.85 inch HDD Storage(4GB), USB Host, File Copy/Delete
- USB 2.0 Interface
- 1.3 inch OLED display with 160x128 resolution and 260K colors
- Long Play Time: Up to 20hours (Based on company test result. Play time may be shortened if OLED is used often.)
- Multi-language Support
- Enhanced Integrated Navigator
- Play/Pause during Playback, Record/Pause during Recording
- Next Track/Previous Track, Fast Forward/Fast Rewind, Infinite Loop
- Resume, Fade In, Auto Play feature support
- Search Speed, Skip Speed Setting
- Digital Volume Control :40 levels
- Various EQ and Sound Effects (JetEffect)
  - User adjustable 5-band EQ
  - Normal, Rock, Pop, Jazz, Classic, Vocal, User
  - BBE, Mach3Bass, MP Enhance, 3D Surround Support
- Clock, Alarm, Scheduled Recording, Sleep Timer, Auto Power-Off
- Auto display off feature to save battery power
- Easy firmware download and upgrade
- Title Display with ID3Tag or File Name
- Display Product Info (Firmware version, Total Capacity, Total Usage)

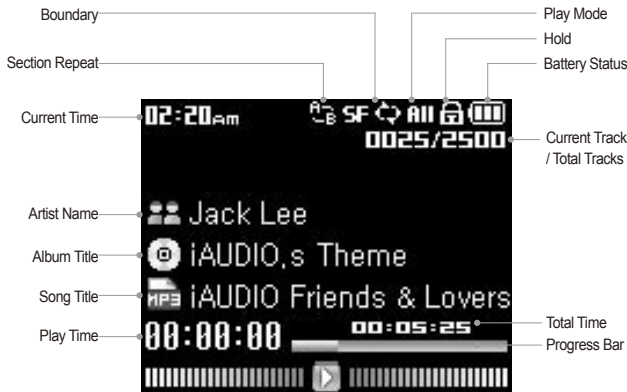
- USB Data Transfer Support for MAC OS (9.X, 10.X) and Linux (v2.2 and higher)
- Software
  - JetShell (File Transfer, MP3/WAV/WMA/AUDIO CD Playback)
  - JetAudio VX (Integrated multimedia player, music/video conversion feature)

Supported File Formats	MP3 : MPEG 1/2/2.5 Layer 3, ~320kbps, ~48khz, mono/stereo WMA : ~256kbps, ~48khz, mono/stereo OGG : ~q10, ~44.1khz, mono/stereo FLAC : compression level 0 ~ 8, ~44.1khz, mono/stereo WAV : ~48khz, 16bit, mono/stereo AVI : XviD MPEG4, 256 ~ 384 kbps CBR, up to 160x128, 15 fps JPEG(Except for Progressive JPG) TXT
Memory	0.85 inch - 4GB HDD
USB Interface	USB 2.0 (PC), USB 1.1 (Host)
File Transfer Rate	Max 30Mbps (Upload Max 40Mbps)
Power Supply	Built-in Rechargeable Lithium Polymer battery (Max. 20 hours of continuous playback based on company test)
Charging Time	About 3 hours
Buttons	Swing Touch(REC, <, >, PLAY), Power/Hold, VOL+, VOL-, MENU
Display	1.3 inch 160 x 128 dot, 260,000 color OLED
SNR	95dB (A-Weighted)
Output Frequency	20Hz~20KHz
Output	16 Ohm earphones : 30mW + 30mW
Dimension	35.6 X 76.1 X 19 mm (Width x Length x Thickness)
Weight	60g (includes lithium polymer battery)

## 1.4. Identifying the Parts



## 1.5. OLED Display



The battery status icon indicates how much battery is left. The number of segments in the icon decreases as the battery discharges. For some batteries or rechargeable batteries, the number of segments in the battery icon may increase or decrease irregularly when the remaining charge is being measured. This is normal.



When the battery runs out, the battery icon starts to blink. If this happens, the player will automatically power off after about 30 minutes.

## 1.6. Charging iAUDIO 6

- If your player is being used for the first time or if it has not been charged for a long time, make sure player is charged fully before using it.
- To charge iAUDIO 6, connect the player to a PC using a USB cable or connect to the AC provided adapter only.

### (a) Using a PC connection



- Connect the supplied USB cable to the USB jack of the player and directly to your computer. The connection to an external USB hub is not supported. The player must be directly connected to the PC via a USB cable.
- If the connection is made properly, the player will display an image showing charging status.
- To check the charging status, run 'Safely Remove Hardware' wizard on your PC. Then iAUDIO 6 will display charging status on its screen.
- Slow charging is recommended for notebooks and other devices that use battery power. See section 4.6 on changing the charging speed of iAUDIO.

**(b) Using a AC adapter (sold separately)**

- i. Connect the AC adapter to an electrical outlet and the USB jack of the player.
- ii. Once connected, the player will automatically turn on and start charging.
- iii. Once the player is fully charged, the charge complete screen will appear as shown.

- AC adapter is sold separately and works for both 110V and 220V.
- For your safety, use only the adapter supplied by the manufacturer.

## 1.7. Windows 98 Driver Setup

When using Windows 98 or 98 SE, you need to install hardware driver for the PC to recognize the player.

- Windows 2000 and later versions automatically recognize the player.

### ■ Installing the driver



1. Connect the player to your PC using the supplied USB cable.



2. "Add New Hardware Wizard" will appear as shown. Click "Next".



3. Click "Search for the best driver for your device (Recommended)", and then click "Next"





4. Click "Specify a location" and click "Browse" button.



5. Select "Win98" folder in the installation CD and then click "Next" button. Drivers are also available for download from [www.iAUDIO.com](http://www.iAUDIO.com).



6. Once the drivers are recognized, click "Next".

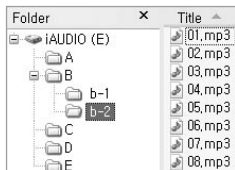



7. Continue to click "Next".

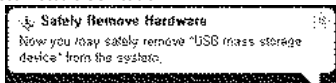
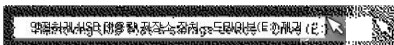


8. Click the "Finish" button to complete the driver installation. The newly added drive can be seen in Device Manager or Explorer.

## 1.8. Connection to PC and Transferring Files



1. Connect the player to a PC using the supplied USB cable.
2. When connected, the screen will show the following screen
3. The iAUDIO drive will appear as shown and can be accessed like a disk drive using Windows Explorer.
4. Launch Windows explorer or JetShell Pro while iAUDIO 6 is connected to the computer to access the iAUDIO drive.
5. You can copy any files including MP3, JPG, and transcoded video files encoded by JetAudio VX to and from "iAUDIO" Drive.
6. To disconnect the player from the PC, first make sure that file transfers are complete and then, single-click on .
7. Click on the following pop-up message when it appears.
8. When "Safe to remove hardware" message appears, you may disconnect the USB cable.



- The iAUDIO 6 can recognize up to 200 folders and 2000 files.
- If iAUDIO drive does not appear in either My Computer or Windows Explorer, check the connection and settings, and then re-connect (Separate driver installation is required for Windows 98).
- If the USB cable is connected after running 'Safely Remove Hardware' wizard from the steps listed above, the player stays in the battery-charging mode. To access its hard drive, iAUDIO must be disconnected first and reconnected.
- In Windows 98 and 98 SE, the icon for "Safely Remove Hardware" may not appear. Instead, close the JetShell after file transfers have been completed, after which the player can be disconnected safely from the PC.
- If the following message appears, run Safely Remove Hardware after a few minutes.



## 1.9. Upgrading Firmware

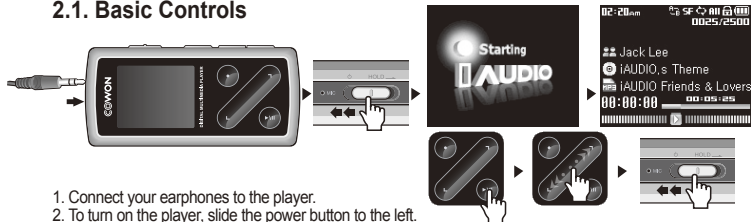
Firmware is a program embedded in the hardware. By upgrading firmware, features of the product can be enhanced and any bugs be fixed. Performance and menus may change after a firmware upgrade. Some beta versions of firmware may contain program bugs that will be fixed in the later versions.

You can find the current firmware version of your player by selecting Settings-Information.

Upon upgrading the firmware, any data stored in the player may be lost, so it is recommended that data be backed up before upgrading the firmware.

The method of installing firmware may vary with each version. Be sure to check out further information regarding firmware on our website: [www.iAUDIO.com](http://www.iAUDIO.com).

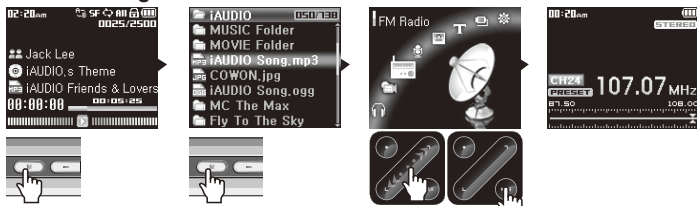
## 2.1. Basic Controls



1. Connect your earphones to the player.
2. To turn on the player, slide the power button to the left.
3. After the splash screen and logo is displayed, the standby screen appears.
4. Touch the "PLAY" button to play music. (if it is in Music mode)
5. Touch the "PLAY" button to pause music. (if it is in Music mode)
6. Touching the < > touch pad will allow selection of previous and next tracks as well as fast forward and rewind the current track.
7. To turn off the player, slide the power button to the left and hold it until shut down starts.

- The power will not turn off during the recording.
- The player can be used during charging with an adapter

## 2.2. Switching between Modes



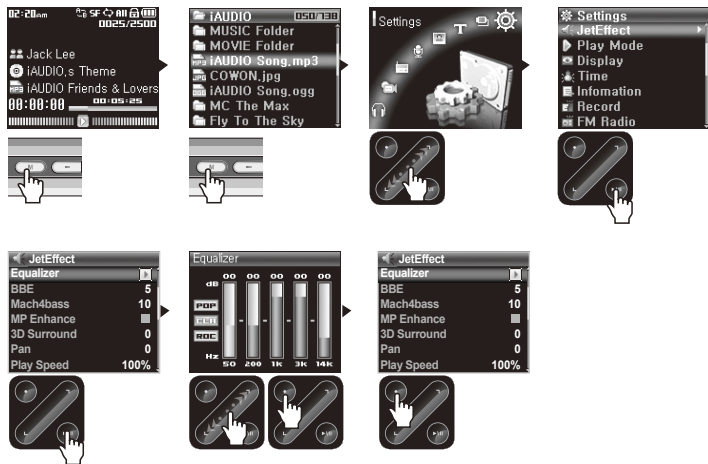
iAUDIO 6 has 7 modes of operation (Music, Video, FM Radio, Record, Picture, Text, USB Host) and Settings menu. To switch between these modes, Press "MENU" button twice. Mode selection screen will appear. (Pressing the "MENU" button once will switch the display to current folder view.)

Using the arrow touch buttons <, >, select one of the 7 modes or Settings icon.

Once a desired mode is selected, touch "PLAY" button to enter the selected mode.

To cancel a task in mode selection screen and return to the standby screen, press "MENU" button again or touch "REC" button.

## 2.3. Navigating through Files and Folders



### • How to Switch to Navigator mode

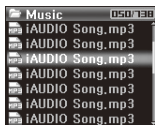
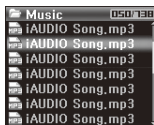
- Press "MENU" button once.
- If the player is in one of Music, Video, Record, Picture, Text modes, the Navigator will appear showing the current folder view.
- If the player is in FM Radio mode, radio frequency tuning screen appears.
- If the player is in USB Host, it will display a folder view.

### • How to Use the Navigator

- To move between files and folders, touch the <, > buttons.
- To open a selected folder, touch the "PLAY" button.
- To move to its parent folder, touch "REC" button. (In the root folder, the Navigator will close and return to the previous play mode screen).
- To play a selected file, touch "PLAY" button.

-To close the Navigator, either press "MENU" twice or touch "REC" button in the root folder.

## 2.4. Changing Settings



### • To Switch to Settings Mode

- Press "MENU" button twice. Mode selection screen will appear.
- Using the arrow touch buttons >, select Settings icon and touch "PLAY" button to switch to Settings mode.

### • Selecting items in Settings Mode

- Using the < and > touch buttons, select one of categories in Settings menu: JetEffect, Play Mode, Display, Timer, General, Recording, FM Radio, and Information.
- Touch "PLAY" button to view menu items in its Settings category.
- To move back to the parent menu, touch "REC" button.

### • Changing the values for items under Settings

- When a specific item is selected, a popup window will display setting values.
- Touch the < and > touch buttons to change values, and touch "PLAY" button to apply the values.
- To cancel the selection of settings item and return to previous menu screen, touch "REC" button.

### • Changing Equalizer Settings

- Navigate through the Settings menu to JetEffect -> Equalizer Menu.

Touch <, > buttons to switch between different EQ preset modes.

Touch "PLAY" button to select each EQ band.

Touch <, > buttons in the selected EQ band to adjust the dB level of the band (-12dB ~ 12dB).

To escape the Equalizer menu and return to previous menu screen, touch "REC" button.

## 2.5. Using Pop-Up window

- When the "PLAY" button is touched for extended time, a pop-up window will appear with its content as listed in the table.
- Using <, >, and "PLAY" buttons popup menu items can be selected.
- Touching "REC" button cancels and closes pop-up window.

Mode	Pop-Up Content
Music, Video	Lyrics(Music Only), DPLAdd, Bookmark
Radio (Preset List)	Listen Ch, Save Current Ch, Delete Ch
Navigator - General	Play Now, Add List
Navigator - Folder view	Expand, Play(Except for Video), Add List
Navigator-DynamicPlay List	Play, Delete, Delete All
Navigator-Bookmark Files	Play, Delete, Delete All
Navigator-Image Files	View, Wall Paper, Slide Show
USB Host-Files	Copy, Paste, Paste-In, Delete
USB Host-Folders	Copy, Paste-In, Delete



### 3.1. Playing Audio and Video Files

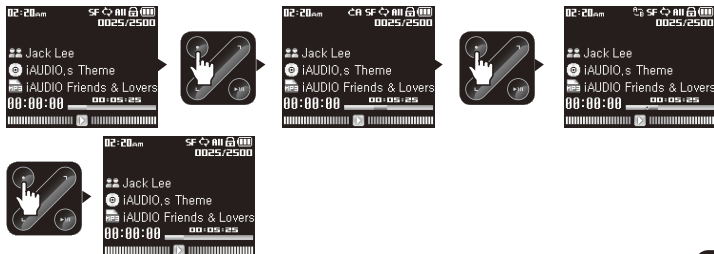
#### ■ Playing Audio and Video files



1. After turning on the power, change the player mode to either Music or Video.
2. Touch the “PLAY” button to play music files or encoded video files.
3. Touch the “PLAY” button during playback to pause the media files.
4. Touch the <, > buttons briefly to play previous or next tracks.
5. During the playback, touch and hold the <, > buttons or rub the finger along the <, > directions to rewind or fast-forward the current track.



- Video files that have not been converted by JetAudio VX will not play in iAUDIO 6.
- If the Auto Play option is enabled in the Settings menu, the player will automatically start playing media files upon power up.
- If Resume is enabled in the Settings menu, iAUDIO will resume playback from the position where it was previously turned off.
- The display format of track information during playback can be set in Settings - Display – Title menu.
- If a large number of files are stored in the player, it may take the player longer time to respond.
- The player can recognize maximum number of 2000 media files and 200 folders. (This limit refers to playable music and video files and does not include other file types)

#### ■ Using Section Repeat



## Using Advanced Features

Section Repeat allows you to set a specific part of a track to play repeatedly.

1. During a music playback, touch the "REC" button at the start of the section to repeat. An  will appear at the top of the status bar on the screen.
2. Touch the "REC" button again at the end of the section to repeat and the icon will change to the , and the specified section of music will be repeated.
3. To cancel Section Repeat, touch the "REC" button again.

- Minimum 1 second is required for section repeat to work.
- Section repeat function will be cancelled if another track is selected.
- Section repeat function only works with music files and does not apply to video files.

### ■ Using Dynamic Playlist (DPL)

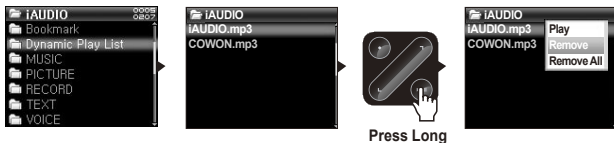
This function lets you edit a list of favorite music files. By using DPL user can access music files in various folders without navigating each folder.

iAUDIO 6 contains a virtual folder named "Dynamic Play List" in root folder, not recognized from a PC. Tracks that are added to DPL will be listed in the "Dynamic Play List" folder.

#### ■ Adding tracks to DPL



#### ■ Removing tracks from DPL



1. To add a track while playback, touch and hold the “PLAY” button to open a pop-up window. And then select the “Add to DPL” from the pop-up menu.
2. To add a track or folder to DPL, select a track or a folder in Navigator screen, touch and hold the “PLAY” button to open a pop-up window. And then select the “Add List” from the pop-up menu.
3. To remove a single track from DPL, select the file under “Dynamic Play List” folder. Then touch and hold the “PLAY” button to open a pop-up window. And then select the “Remove” from the pop-up menu.
4. To remove all tracks from DPL, select the file under “Dynamic Play List” folder. Then touch and hold the “PLAY” button to open a pop-up window. And then select the “Remove All” from the pop-up menu.

- Adding a folder to DPL will add all tracks within that folder to DPL.
- When tracks are removed from the DPL, only the link will be removed and the actual files are not deleted from the disk.
- To delete actual files, use USB Host mode or connect the player to a PC.
- If the actual file is deleted from the player, its entry is automatically removed from the DPL.
- Maximum 200 files can be added to DPL.

### ■ Using Bookmarks

The bookmark function allows users to set where to start playing in each desired track.

iAUDIO 6 contains a virtual folder named “Bookmark” in root folder, which is not recognized by a PC.

By setting a Bookmark at a desired location of a track, one can play the file starting from the preset location.

#### ■ Adding tracks to Bookmark



Press Long

#### ■ Removing tracks from Bookmark



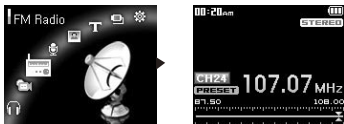
Press Long

1. During a music playback, touch and hold the “PLAY” button to open a pop-up window. Select the “Bookmark” in the pop-up menu.
2. If the file already has a Bookmark, its previous bookmark will be replaced with the new one.
3. To play a file with a Bookmark, select the file from the “Bookmark” folder.
4. To remove a Bookmark, display the pop-up menu from the entry in the “Bookmark” folder, and then select “Remove”.
5. To remove all Bookmarks, display the pop-up menu from any Bookmark entry in the “Bookmark” folder, and then select “Remove all”.

- When file entries are removed from the Bookmark, only their links are removed and the actual files are not deleted from the disk.
- To delete actual files, use USB Host mode or connect the player to a PC.
- If the actual file is deleted from the player, its entry is automatically removed from the Bookmark.
- Maximum 200 files can be added to Bookmark.

## 3.2. Listening to FM Radio

### ■ Listening to FM Radio

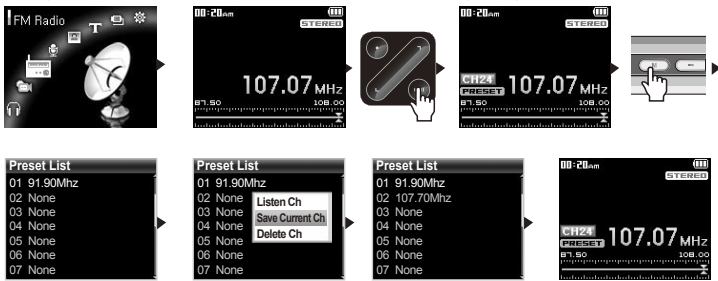


1. Turn on the player and then select the FM Radio mode.
2. Touch <, > buttons briefly to change the tuning frequency at 0.1Mhz step.
3. Touch and hold <, > buttons scan for the nearest FM radio station with good reception.

- If you were listening to FM Radio before turning off the player, the player will automatically start with the FM Radio when turned on.
- Earphone wire works as an antenna for FM Radio signals and thus improves the quality of reception when straightened.

### ■ Setting and Using Preset Channels

Setting preset channels to favorite stations avoids manual scanning through all frequencies.

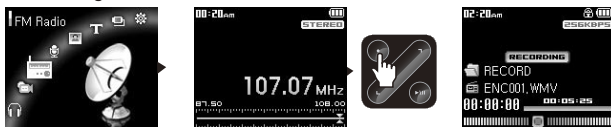


# Using Advanced Features

1. After the player is turned on, select the FM Radio mode.
2. Tune to the favorite station and touch "PLAY" button. A "PRESET" icon will appear on the status bar at the bottom of the screen, and the player switches to Preset mode.
3. Press "MENU" button to display Preset List screen.
4. Touch <, > buttons to the desired channel and then touch and hold "PLAY" button to open a pop-up window.
5. Select "Save current Ch" to add the current frequency to the preset channel.
6. Listen to the preset channels by selecting "Listen Ch" or delete preset channels by selecting "Delete Ch".
7. Touch "PLAY" button in the preset mode to return to a manual tuning mode. The "PRESET" icon will disappear from the screen and touching <, > buttons will allow tuning frequency at 0.1Mhz step.

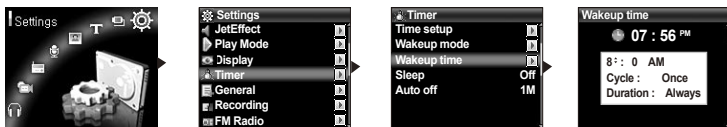
- If there are no frequencies in Preset mode, the tuning frequency will not change.
- Up to 24 frequencies can be stored in preset channels.

## ■ Recording FM Radio



1. After the player is turned on, select the FM Radio mode.
2. Set the tuning frequency to the desired radio station.
3. Touch "REC" button to start recording.
4. Touch "REC" button again to stop recording.

## ■ Scheduled Recording of FM Radio



1. Set the correct time on iAUDIO. (Refer to section 4.5)
2. In the Settings - Timer menu, select the Wakeup Mode and set it to FM Recording.
3. In the Settings - Timer menu, select the Wakeup Time and set it to desired time for recording.
4. The player will turn on automatically at the specified time and starts recording the FM Radio signal.

- Recorded files are stored in "RECORD" folder

- During recording, battery consumption is higher than other playback operation.

- Sound quality and capacity of recordings may vary according to reception quality and recording settings. See the section 4.7 for further information

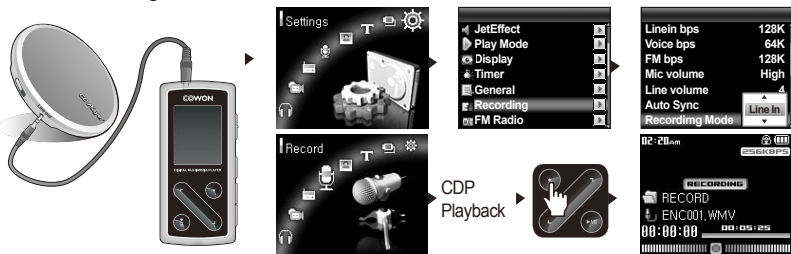
### 3.3. Recording Using Built-In Microphone or Line-In Connection

#### ■ Recording with Built-in Microphone



1. Make sure that the recording mode is set to Voice in Settings – Recording- Recording Mode menu.
2. Switch to the Record mode by pressing "MENU" button and then choose Record icon.
3. Touch "REC" button to start recording with the built-in microphone.
4. During recording, touch the "PLAY" button to pause or resume the recording.
5. Touch "REC" button to end recording.
6. To play recorded files, touch "PLAY" button.

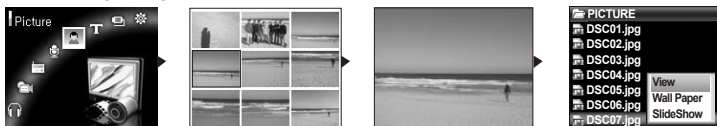
## ■ Recording with Line-In Connection



1. Use the Line-In cable to connect the headphone jack of your audio source device with the Line-In jack of iAUDIO.
2. Make sure the recording mode is set to Line-In in Settings – Recording – Recording Mode menu.
3. Switch to the Record mode by pressing "MENU" button and then choose Record icon.
4. Start the playback on your CDP and then press the "REC" button on iAUDIO to start recording.
5. During recording, touch the "PLAY" button to pause or resume the recording.
6. Touch "REC" button to end recording.
7. To play recorded files, touch "PLAY" button.

- Recorded files are stored in "VOICE" folder if recorded via built-in microphone, or in "RECORD" folder if recorded via Line-In cable.
- To use JetEffect, Fast-forward and rewinding capabilities, the recorded audio files should be played in Music mode.
- If the player was in Record mode before turning the player off, the player will start with the Record mode when turned on again.
- Sound quality and capacity of recordings may vary according to reception quality and recording settings. See the section 4.7 for further information

## 3.4. Viewing Images

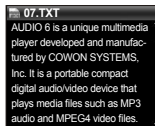
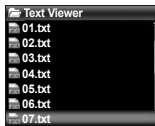




1. Connect iAUDIO and computer with the USB cable.
2. Transfer (copy) the image files from PC to iAUDIO.
3. Disconnect iAUDIO from PC.
4. After the player is turned on, select Picture mode by pressing "MENU" button then choosing Picture icon. Thumbnail view of images will appear on the screen.
5. images in single image view.
6. In single image view, touching "PLAY" button enlarges the image. In this zoom mode, the <, >, Record, and Play buttons can be used to move the image left, right, top and bottom. To escape the Zoom mode, press the "MENU" button.
7. screen. After selecting a file with <> buttons, touch and hold "PLAY" button to open a pop-up window.
8. Select "View" to view the selected image file; select "Wall Paper" to set the image as the background image in the screen; select "Slide Show" to view all the images in a slide show. (Refer to section 4.4).

- Only JPG (Progressive Type excluded) image files are supported and other image file formats cannot be viewed.
- Very large image files make take a while before viewing.

### 3.5. Reading Texts



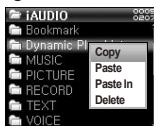
1. Connect iAUDIO and computer with the USB cable.
2. Transfer (copy) the text files from PC to iAUDIO.
3. Disconnect iAUDIO from PC.
4. After the player is turned on, select the Text mode by pressing "MENU" button then choosing Text icon. Select the text files by browsing with the Navigator in the TEXT folder.
5. Touch <, > buttons to move text by single line.
6. To move to a specific location within a text file, first specify a location by touching a "PLAY" button, choose a location using "PLAY" and <, > buttons, and then touch "REC" button to move.

- Text files can also be viewed during music playback.
- Text files up to 240KB can be recognized.

## 3.6. Transferring Files Using USB Host Mode

In USB mode, users can copy and delete, files and folders between iAUDIO 6 and compatible USB storage devices.

### ■ Managing iAUDIO using USB Host Mode



1. After the player is turned on, select the USB Host mode by pressing "MENU" button then choosing USB Host icon.

2. A Navigator screen will appear. Refer to section 2.3 for folder and file navigation.

3. To manage folders, touch and hold the "PLAY" button on a selected folder. This opens a pop-up folder with a menu:

Copy : Save the selected folder in the clipboard.

Paste : Copy the contents of the clipboard to the selected folder.

Paste In : Copy the contents of the clipboard to the inside of the selected folder.

Delete : deletes the selected folder.

4. To manage files, touch and hold the "PLAY" button on a selected file. This opens a pop-up folder with a menu:

Copy : Save the selected file in the clipboard.

Paste In : Copy the contents of the clipboard to the inside of the selected folder.

Delete : deletes the selected folder.

- The root folder for iAUDIO is "iAUDIO", and the root folder for USB device is "DEVICE".

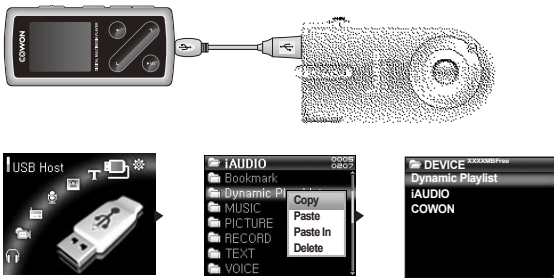
- Selection of multiple files are not supported. To select multiple files, a whole folder must be selected.

- The clipboard is temporary storage for files and folders for copying.

- There is a limit in the length of folder or file name for copying. Please do not copy folder or files with very long names.

- In USB Host mode, the maximum 200 folders and 2000 files can be recognized.








### ■ Managing a Compatible USB Device



1. Using a USB Host cable, connect the iAUDIO to a compatible USB device.
2. After the player is turned on, select the USB Host mode by pressing "MENU" button then choosing USB Host icon.
3. Folders and files in a connected USB device can be copied and deleted exactly the same way the iAUDIO is managed. To copy the files or folders from a compatible USB device to iAUDIO, first copy the selected folders and files, and then "Paste" or "Paste In" to "iAUDIO" folder.
4. After file transfer is complete, disconnect the USB cable.

- If it is the first time USB Host connection is made, it may take a while for iAUDIO to recognize the device.
- If the USB device is not recognized by iAUDIO, the USB Host Mode is cancelled.
- A list of compatible USB Devices can be found on our website (<http://www.iAUDIO.com>).
- There is a limit in the length of folder or file names for copying. Please do not copy folder or files with very long names.
- In USB Host mode, the maximum 200 folders and 2000 files can be recognized.

## 3.7. Summary of Button Controls

Button	Operation
	<ul style="list-style-type: none"> <li>· Press once to display File Navigator</li> <li>· Press twice to display Mode selection screen</li> <li>· Press third time to return to the standby screen</li> </ul>
	<ul style="list-style-type: none"> <li>· Increases the volume</li> </ul>
	<ul style="list-style-type: none"> <li>· Decreases the volume</li> </ul>
	<ul style="list-style-type: none"> <li>· During playback, sets the Section Repeat</li> <li>· In Record mode, starts/stops recording Line-In</li> <li>· In FM Radio mode, starts/stops recording FM Radio</li> <li>· In File Navigation mode, move to parent folder</li> <li>· In Settings menu, moves to parent menu</li> </ul>
	<ul style="list-style-type: none"> <li>· During playback, touch this briefly to play the previous track.</li> <li>· During playback, touch and hold this to rewind the current track</li> <li>· In File Navigator, moves the highlight down.</li> <li>· In Settings menu, moves the highlight down or left</li> </ul>
	<ul style="list-style-type: none"> <li>· During playback, touch this briefly to play the next track.</li> <li>· During playback, touch and hold this to fast-forward the current track</li> <li>· In File Navigator, moves the highlight up.</li> <li>· In Settings menu, moves the highlight up or right.</li> </ul>
	<ul style="list-style-type: none"> <li>· During playback, touch this briefly to pause or resume.</li> <li>· During playback, touch and hold this to open a pop-up window</li> <li>· In FM Radio mode, touch to switch to PRESET mode</li> <li>· In File Navigator, touch briefly to select and open a folder or a file</li> <li>· In File Navigator, touch and hold to open a pop-up window</li> <li>· In Settings menu, selects an item or apply values to a selected item.</li> </ul>

## 4.1. Settings Menu List

Menu	Music
	Video
	FM Radio
	Record
	Picture
	Text Viewer
	USB Host
	Settings ▶
JetEffect	Equalizer
	BBE
	Mach3Bass
	MP Enhance
	3D Surround
	Pan
	Play Speed
	JetEffect Preset
Play Mode	Boundary
	Repeat
	Shuffle
Display	Language
	Title
	Play Time
	Album Scroll
	Title Scroll
	Scrollspeed
	Wallpaper
	Lyrics
	Auto Display Off
	Brightness
Timer	Time Setup
	Wakeup Mode
	Wakeup Time
	Sleep
	Auto Off
General	Skip Length
	Scan Speed
	Silent Scan
	Resume
	Auto Play
	Fade in
	USB Charging
	Beep
	User defined button
	Load Default
Recording	LineIn bps
	Voice bps
	FM bps
	Mic volume
	Line volume
	Auto Sync
	Recording Mode
FM Radio	Stereo
	Auto Scan
	Region
Information	

- Settings menu may change after a firmware upgrade.
- Display language in the Setting menu is described in section 4.4
- Settings menu operation is described in section 2.4.

## Menu



## 4.2. JetEffect

### 1. Equalizer

- Use the preset settings or manually set 5 Band Equalizers(EQ). Preset EQ settings include Normal, Rock, Jazz, Classic, Pop, and Vocal. Each preset EQ can be edited to match user's preference.

### 2. BBE

- BBE is the sound effect that provides clear music.

### 3. Mach3Bass

- Mach3Bass is the base booster that enhances super low-end bass.

### 4. MP Enhance

- MP Enhance: Sound effect that compensate for missing sound segments.

### 5. 3D Surround

- 3D Surround provides three dimensional sound effects.

### 6. Pan

- Pan adjusts the left and right volume balance.

#### 7. Play Speed

- Controls the speed of music playback in the range of 70%–110% (does not support for files with sampling rate less than 44kHz).

#### 8. JetEffect Preset

- To save current JetEffect settings or load the previous settings, touch and hold “PLAY” button to open pop-up window and select SAVE or LOAD.

- Excessive JetEffect settings may strain sound and generate noise.

- For further information regarding JetEffect, refer to BBE MP at our website: [www.iAUDIO.com](http://www.iAUDIO.com)

### 4.3. Play Mode

#### 1. Boundary

- Function that sets the playback section of files and folders. Various playback ranges can be set. Boundary function is not available for recorded MP3 files.
- All: Plays all tracks in all folders.
- Single: Plays only one track.
- Folder: Plays files in the current folder.
- Subfolder: Plays files in the current folder including its subfolders.
- If tracks in DPL or Bookmark are played, boundary will automatically be set to the list. When a track in a general folder is played while tracks in DPL or Bookmark are being played, it automatically changes to normal boundary settings.

#### 2. Repeat

- Within the range specified in the boundary, repeat playback can be set.

#### 3. Shuffle

- Within the range specified in Boundary, random playback can be set.
- If enabled, files within the range are randomly played.

## 4.4. Display

### 1. Language

- Set the display language to use in iAUDIO 6.

### 2. Title

- Sets how the player displays file names on the screen.
- Choose ID3 tag to display tag information (artist, title) while playback.

### 3. Play Time

- Sets how it displays time information of current file.
- Play time shows elapsed playback time and Remaining shows the remaining playback time.

### 4. Album Scroll

- Sets how it scrolls album names displayed on the screen.
- If set to OFF, scrolling will be disabled and if set to One Way, text will scroll starting from the left side.

### 5. Title Scroll

- Sets how it scrolls titles displayed on the screen.
- If set to OFF, scrolling will be disabled and if set to One Way, text will scroll starting from the left side.

### 6. Scrollspeed

- Sets the scrolling speed for text displayed on the screen.
- Larger the number, faster the scrolling speed.

### 7. Wallpaper

- Sets the wallpaper for Music mode.
- If None is selected, wallpaper is not displayed.
- If Defaults is selected, default wallpaper will be displayed.
- If Custom is selected, the image set as Wallpaper in Picture mode will appear as the wallpaper.

### 8. Lyrics

- iAUDIO can display lyrics of music files that contain lyric information.
- When enabled, lyrics of the music file being played is displayed on the screen.
- Music files without lyrics will not display lyrics even if this feature enabled.
- For more information on using lyrics, see LDB manager Guide at our website ([www.iAUDIO.com](http://www.iAUDIO.com)).



#### 9. Auto Display Off

- Sets how long the screen stays on before it turns off.
- If there is no operation for a specified period of time, the screen will automatically turn off.

#### 10. Brightness

- Sets the screen brightness.

### 4.5. Timer

#### 1. Time Setup

- Sets the current time
- Sets the correct time setting for alarm and scheduled recording.

#### 2. Wakeup Mode

- Automatically turns on the player at the specified wakeup time.
- Music Alarm plays music and for FM Alarm settings, the last station to be listened to will run in Radio mode.
- For FM recording, it records the last radio frequency from the preset time during the specified time.

- FM Scheduled Recording uses more power than other features. Always make sure that the player is fully charged before using this feature.

#### 3. Wakeup Time

- Sets the time to automatically turn the player on.
- Once sets the alarm for one time use, Daily sets the alarm for daily use.
- Duration is the period of time during which the alarm will stay on.

#### 4. Sleep

- Automatically turns off the power after a specified time.
- After the preset time has passed, the player will automatically turn off even if a file is being played at the time.

#### 5. Auto Off

- When the player is stopped and no action is taken after a specified time has elapsed, this feature will automatically turn off the player.
- This function does not operate during playback.

## 4.6. General

### 1. Skip Length

- Sets the length of playback time skipped when the <, > buttons are touched shortly.

### 2. Scan Speed

- Sets the speed of Fast Forward/Rewind when the <, > buttons are touched and held.
- The faster the speed, the quicker scanning is possible.

### 3. Silent Scan

- Sets the sound during Fast Forward/Rewind operation. When selected, there is no sound during scanning.

### 4. Resume

- Saves the location of the music file played at the last power off.
- If enabled, when the player is turned on, it automatically plays from the last position where it was turned off.

### 5. Auto play

- Automatically plays files after the player is turned on.
- When enabled, the track last played will automatically start.
- When Resume is enabled, the player automatically plays from the last position.

### 6. Fade in

- Gradually increases volume when resuming playback after stop or pause.
- Sets how long it takes to increase the volume.

### 7. USB Charging

- Sets the charging mode.
- When set to Normal, the built-in battery will be charged in normal speed. When set to Slow, battery charge will be slower. When set to Off, battery will not be charged.
- Slow charging is recommended for notebooks and other devices that run on battery power.

### 8. Beep

- Turns on or off the Beep when operating iAUDIO.

### 9. User defined button

- Users can specify desired actions to "MENU" and "REC" buttons when they are pressed and held.
- The "MENU" button can be assigned to function for JetEffect, Boundary/Shuffle, Equalizer, DPL, Bookmark or Lyrics.
- The "REC" button can be assigned for Record, Boundary/Shuffle, Equalizer, DPL, Bookmark or Lyrics.

#### 10. Load Default

- Resets all the settings to default values except language setting.

### 4.7. Recording

#### 1. Line-In bps

- Sets the audio quality of the file being recorded through Line-In.
- The higher Kbps, the better the recording quality is, but file size also becomes larger.

#### 2. Voice bps

- Sets the audio quality of the file recorded with the built-in microphone.
- Files recording through the microphone are set to Mono by default.
- The higher Kbps, the better the recording quality is, but file size also becomes larger.

#### 3. FM bps

- Sets the quality of the file being recorded from FM Radio.
- Also sets the quality of scheduled FM recording file.
- The higher Kbps, the better the recording quality is, but file size also becomes larger.

#### 4. Mic volume

- Adjusts the volume level of audio recorded through the built-in microphone

#### 5. Line volume

- Adjusts the volume level of audio recorded through the Line-In.

#### 6. Auto Sync

- Recognizes input sound through the Line-In and generates a new file automatically.
- If there is no sound input during a specified time period, a new file is created when recording is resumed.

#### 7. Recording Mode

- Selects between Line-In or Built-In Microphone as the source of audio recording.

## 4.8. FM Radio

### 1. Stereo

- Select from Stereo and Mono when listening to FM Radio.
- Radio broadcasts that only support Mono will not support the Stereo feature.

### 2. Auto Scan

- Automatically scans for FM frequency channels and sets to preset channels.

### 3. Region

- Selects the country in which you are listening to FM radio.

## 4.9. Information

- Version : The current version of Firmware
- Total Space : Total memory capacity
- Free Space : Currently available memory capacity

### 5.1. Resetting the Player to Factory Default Settings

- When initialized, all setting values will be deleted and changed to Factory default settings.
- If the player operates improperly, press the "RESET" button at the bottom of the player and then restart the player. If malfunction continues, please initialize the player to Factory Default setting.

1. After the player is turned on, select the Music mode.
2. If a music file plays, pause at the playback screen and do as shown below.



3. When, initialized, the Language setting screen will appear when the player is turned on.

## 5.2. Installation CD-ROM Contents

Inside iAUDIO Installation CD, you will find JetAudio VX, the world famous multimedia playback and video conversion software, and JetShell, a manager program for iAUDIO. Additional driver files for Windows 98 and 98 SE are also included)



### 5.3. Converting Video Files Using JetAudio VX

1. Install and then run JetAudio VX.



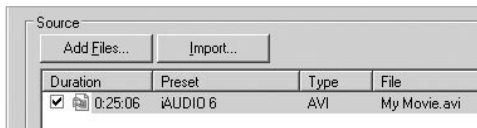
2. Click "Convert Video" on the top to convert the video file.



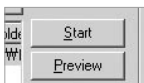
3. From the Convert Video window, click "Add File" to select the files to convert.



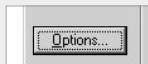
4. Check the selected video files in the list.



5. After checking the target folder location to save the converted files and other settings, click on "Start" to start the video conversion process.



- Movie files that have not been converted by jetAudio VX will not play in iAUDIO.
- Make sure that the movie files play properly on the PC.
- Not all video files can be converted. Files already damaged before conversion may not work on iAUDIO 6 even if the conversion process is successful.
- Conversion time may vary depending on PC performance, source file size and codec types.
- "Preview" allows checking the converted video before starting conversion.
- To convert a file with subtitles or to change settings on subtitles, click on "Convert Options".



- SMI files for subtitles must have the same file name as its video file.
- The file specifications for video files playable in iAUDIO 6 are as follow:  
 Video : Xvid, 1-pass, 256 ~ 384kbps  
 Audio : MP3 128kbps CBR  
 Size : 160 x 128  
 Frame Rate : 15 fps or less  
 Interleaving time : 66ms or less



## What is JetShell?

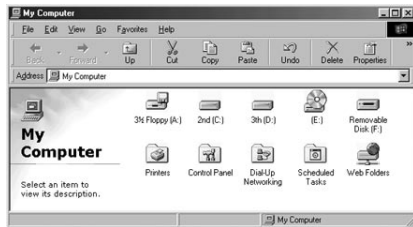
**JetShell is the iAUDIO manager program providing the following features:**

- Downloading/Uploading files from/to iAUDIO.
- File management similar to Windows Explorer
- Playing MP3, MP2, WAV, WMA, ASF, Audio CD, and Playlist (m3u)
- Copying (ripping) MP3 files from Audio CD
- Converting between WAV/MP3/WMA
- Changing bitrate of MP3 files
- Convenient file transfer using Download List
- A wide selection of spectrums, equalizers, and sound effects
- Editing ID3 tags
- Downloading iAUDIO logo
- Formatting the flash memory

### **Running Environment for JetShell**

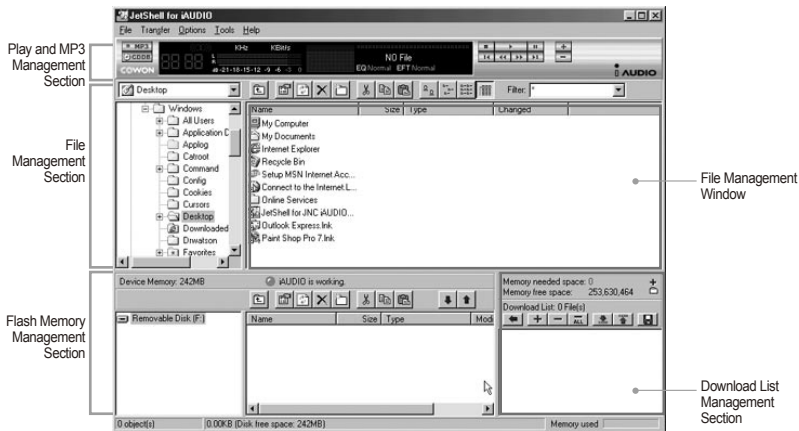
- Pentium 200 Mhz or higher
- 32 MB or more memory
- 20 MB or more hard disk space
- 256 Color or higher display
- Windows 98/ME/2000/XP (NT is not supported)
- USB Port 1.1 or higher
- CD-ROM drive
- Sound Card, Speaker or Headphone

1. When you insert iAUDIO installation CD in the CD-ROM drive, the installation program starts automatically. It may not start automatically depending on the settings of Windows. In this case, run `x:\setup.exe` or `x:\JetShell\setup.exe`. (where x is the letter of your CD-ROM drive)
2. When the installation finishes, Start -> Program -> COWON -> iAUDIO 6 program group is created.
3. You are now ready to connect iAUDIO to PC (Don't run JetShell at this time).  
Connect the USB ports of iAUDIO to your PC using the provided USB cable.  
**(We recommend to connect iAUDIO to the PC directly, not using USB hub)**
4. As soon as the cable is connected, the message "Found New Hardware" appears and the USB driver for iAUDIO is installed automatically. The driver installation message may not appear on the screen depending on the status of Windows. To make sure that the installation was completed normally, check for the device "iAUDIO" in My Computer as shown below, or "Control Panel -> System -> Hardware -> Device Manager".



5. Now you can transfer files by using JetShell or Window Explorer.

## The Whole View



When JetShell is running, it controls the iAUDIO. Make sure to exit JetShell before performing the following tasks:

- Installing iAUDIO's USB driver
- Formatting iAUDIO in Windows Explorer
- Upgrading iAUDIO's firmware

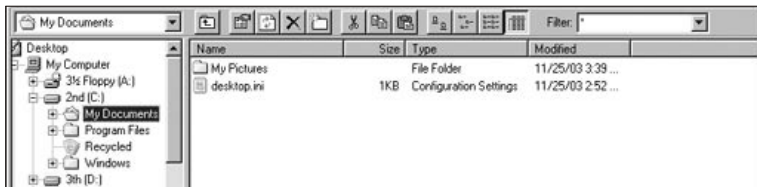
## Player Section



Double click an MP3, MP2, WAV, WMA, ASF, Audio CD track, or Playlist (m3u) file in the "File Management Window", or drag and drop files on the "Player Window" shown above. You can also select multiple files and then press the Play button. On the black screen in the middle, various information of current file is displayed, and two types of spectrum screens appear.

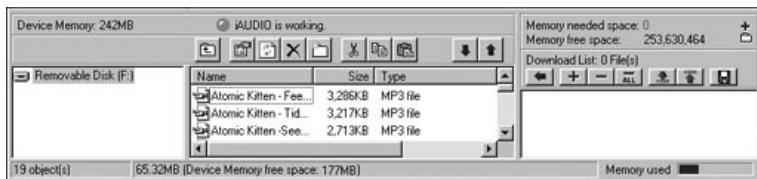
You can start and stop playing the file with the buttons at the right, and adjust the volume with the + and - buttons. To skip instantly to a specific position of the track being played, click on the position bar.

## File Management Section



The File Management Section of JetShell looks just like Windows Explorer. The left window shows folders, disks, and CD-ROM drives in a tree structure, and the right window shows the files in current folder.

## Flash Memory Management Section



The bottom part of JetShell consists of "Flash Memory Management Window" and "Download List Window". When iAUDIO is working normally, the red lamp is turned on with the message "iAUDIO is working" as shown in the figure. The files in iAUDIO displayed in the middle window. The "Memory used" bar shown at the bottom right indicates the used memory size of the total flash memory of iAUDIO. If this bar is almost full, it means that there is almost no free space available in iAUDIO.

Button	Function	Explanation
	Up	Move to the upper folder.
	Properties	Display the properties of the selected file.
	Refresh	Refresh the contents of flash memory.
	Delete	Delete the selected file or folder.
	New folder	Create a new folder.
	Cut	Cut the selected file or folder.
	Copy	Copy the selected file or folder.
	Paste	Paste the cut or copied file.
	Transfer to Flash Memory	Transfer the selected files or folder from PC to iAUDIO.
	Transfer to PC	Transfer the selected files or folder from iAUDIO to PC.

JetShell displays visually cool spectrums. When you click on the spectrum display area, the screen changes as follows.



You can also enjoy various equalizers and sound effects.



Various Equalizers



Various Sound Effects

## Downloading Music files to iAUDIO

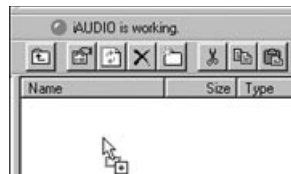
If you want to download secure WMA files (WMA files from online music store) to iAUDIO, please refer to "Downloading secure WMA files to iAUDIO". JetShell does not support downloading secure WMA files.

You can use Windows Explorer or other file management programs to download music files to iAUDIO.

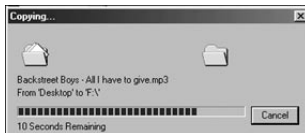
1. Downloading music files to iAUDIO is very simple. Select files to download from the "File Management Window" and click down arrow.



2. Or you can also drag and drop the selected files from the "File Management Window" to the "Flash Memory Management Window".

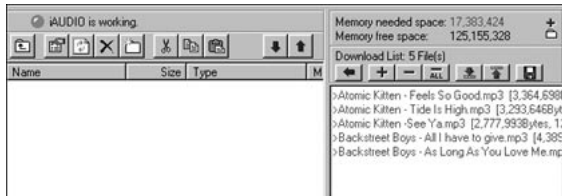


3. The following window shows the file downloading process. Never disconnect the USB cable while downloading.  
Make sure that the LCD status is READY before disconnecting USB cable.

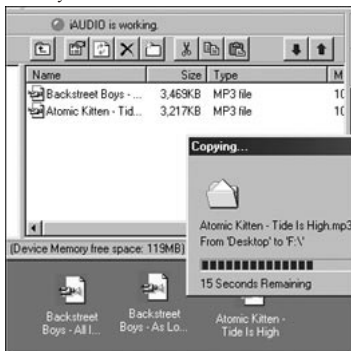


4. Another method is to put the files in the "Download List Window" first, and transfer them later.

This is useful when you wish to download files in different folders.



5. You can also download the files existing outside of JetShell by dragging and dropping them onto the "Flash Memory Window".





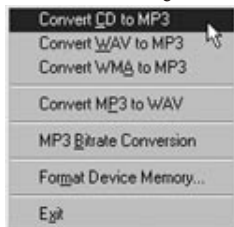
## Converting Audio CD Tracks to MP3 Files and Downloading Them to iAUDIO

With JetShell, you can easily convert your Audio CD into MP3 files and download them to iAUDIO.

1. Before getting started, you must choose the quality of the MP3 files to create. Click [Setup] –[MP3 Encoder Option] to set the desired bitrate of the MP3 files. (The files compressed in a high bitrate have a higher sound



2. From the File Management section, select the CD-ROM drive in which the Audio CD is inserted. Select the audio tracks from the right window and click  or [File] – [Convert CD to MP3] from the menu.

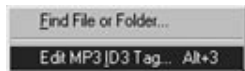


3. Specify the path to save the MP3 files in. Choose a folder in iAUDIO to directly download MP3 files onto iAUDIO.



### 3. Editing ID3 Tag

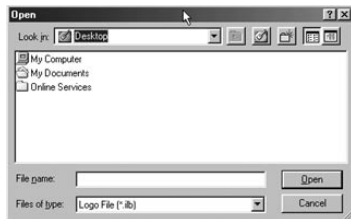
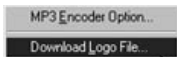
You can edit the ID3 tag of a MP3 file by selecting [Tools] – [Edit MP3 ID3 Tag] from the JetShell menu.



### 4. Downloading Logo File

You can download a logo file to change the logo screen that appears when iAUDIO powers on.

Select [Download Logo File] from the menu. When the "Open" window appears, select the desired logo file and click Open. Then the logo file is downloaded and applied.



## Using Advanced Settings

### **I am still confused even after reading the manual.**

Our website [www.iAUDIO.com](http://www.iAUDIO.com) provides support for users of iAUDIO products with FAQ and beginner's guide for most of our products. Users are strongly encouraged to check out our website for further information regarding product usages and software upgrades and patches.

For individual inquiries, please contact us on-line as we will try to help you best we can.

### **I cannot turn on the player.**

Charge the battery fully in case the battery charge has been drained. If the battery is weak it may take a few seconds to power on. If the player does not respond at all, press the RESET button located at the bottom of the player as the RESET button simply powers off the player.

### **Buttons do not respond.**

Check if the power switch is set to HOLD.

### **The player is on but there is no sound.**

Check if the volume is set to 0

Check if the player has any music file stored in its disk. Damaged music files may not play or play improperly.

Check the connection of the earphones to the iAUDIO. Loose or blocked connection can cause inadequate contact between earphone jack and the iAUDIO.

### **Video won't play.**

It is recommended that all video files are converted with JetAudio VX for use in iAUDIO. Any video file that has not been encoded with JetAudio VX may not play in iAUDIO.

### **FM Radio does not work.**

iAUDIO does not have a separate antenna. Instead it uses earphone wire to receive FM Radio signals.

Stretching the wires may enhance the reception quality. FM radio reception may be poor at locations where FM radio transmissions are shielded. If FM radio does not work where reception should be possible, please contact our service center (Note that reception quality of iAUDIO may differ from other FM radio receivers.)

### **There is too much noise in my recordings.**

iAUDIO 6 uses hard disk drive, which may interfere with the recording, thus adding noise to recorded audio.

### **Characters on the display are corrupted.**

Reset the language using Settings-Display-Language menu and set display format to File name using Settings-Display-Title menu.

If the problem continues, reset the player to its Factory Default setting. Some special fonts may not display perfectly.

**Computer cannot recognize the player when connected.**

When connecting to the PC with a USB cable, please turn the player on before connecting USB cable. If it is still not recognized by the PC, press RESET button next to the USB jack on the bottom of the player.

Connection to an external USB Hub may not be stable due to its low power. iAUDIO should be connected directly to a PC's USB port.

iAUDIO may require additional driver installation for Windows 98 users. See section 1.7

**Player is not recognized by JetShell and "No iAUDIO found" message appears.**

Check to see if the player is recognized in Windows Explorer when it is properly connected to PC. iAUDIO must be recognized in the Windows for it to work with JetShell.

Additional driver installation is required for Windows 98 and 98 SE users. See section 1.7.

Within JetShell, set Settings-Device to match your iAUDIO model.

**Memory capacity of the player is different or smaller than specified.**

The hard drive capacity indicated by Windows Explorer may be different from that indicated by the hard drive manufacturer. Typically for a 4GB hard drive will display 3828MB as its full capacity.

iAUDIO uses some area in the drive for system operation. Therefore, the actual available capacity is somewhat reduced after excluding system area.

**iAUDIO does not play properly when memory is full.**

For iAUDIO to function properly, it requires at least 5 MB of space for saving settings and other system files.

DIGITAL PRIDE.

**COWON**