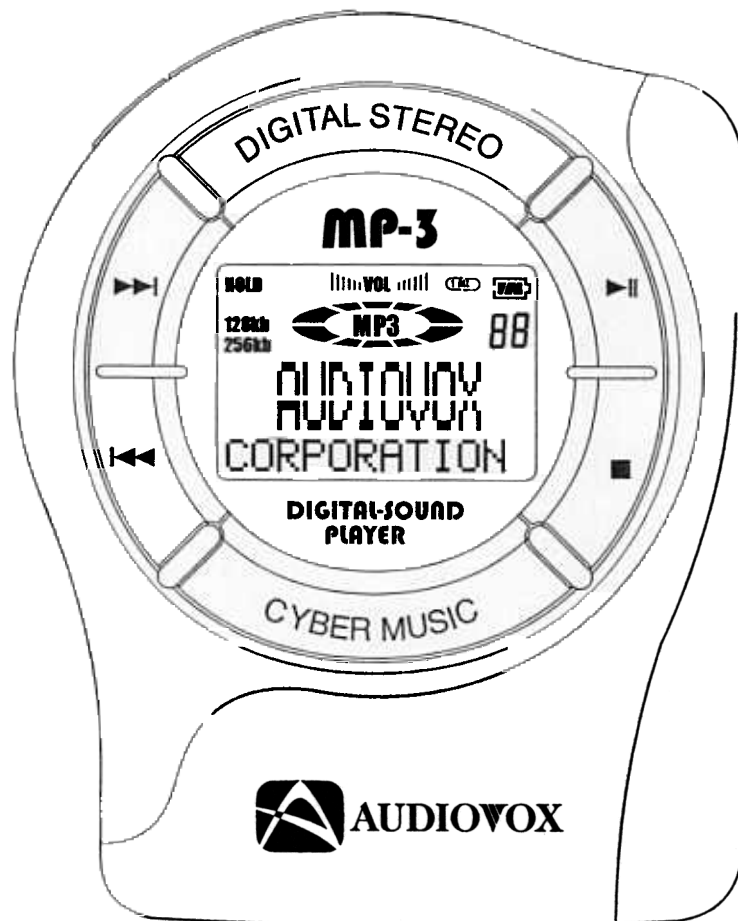


# MPDJ



**MP-1000**

**AUDIOVOX**  
CORPORATION

## CONTENTS

● WHAT IS MP3? .....	1
● THE MPDJ/ MP-1000 .....	1
● MPDJ KIT CONTENTS .....	2
● BEFORE USING MP-1000 .....	3
● MP-1000 CONTROL BUTTONS .....	4
● MP-1000 LCD DISPLAY .....	5
● EXTERNAL MEMORY CARD [MMC] .....	6
● CONNECTING THE MP-1000 TO YOUR PC .....	7
● SOFTWARE INSTALLATION .....	8
● OBTAINING & MANAGING MP3 FILES .....	9
● MPDJ PLAYER .....	10
● ENCODER .....	12
● THE DOWNLOADER PROGRAM .....	17
● HOW TO USE THE MP-1000 .....	19
● TROUBLESHOOTING .....	36
● CAUTION IN USING AND STORING MP-1000 .....	37
● MP-1000 SPECIFICATIONS .....	38

## WHAT IS MP3?

- MP3 is a file format that compresses audio files with little or no loss of sound quality. It allows you to store them on a computer in such a way that the file size is relatively small. Typically, a 1 MB file is equal to one minute of music.
- MP3 stands for MPEG 1, LAYER-3. It is an efficient way to store music or other audio content on your computer. MP3 files can be anywhere from 1/4 to 1/20 the size of a commercial CD audio file, while retaining a high sound quality. These files have the extension \*.mp3 and can be downloaded from the Internet or can be converted for personal use from your favorite CD's in your collection.

## THE MPDJ/ MP-1000

- The MPDJ player stores your favorite MP3 files in its flash memory so that they can be played anywhere you want, on the go. The MP-1000's solid-state design makes it impervious to the skipping and jitter experienced with portable CD players. The MP-1000 is extremely light weight and about the size of a pager, which makes it perfect for use during jogging, walking, hiking, and just about any activity you like to do.

**Warning! - It is illegal to encode MP3 files for trade or sale, unless you have the expressed and explicit permission of the Copyright holder(s).**

## MPDJ KIT CONTENTS

2

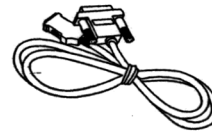
- Take a moment to examine the components provided with your MPDJ kit.



MP-1000 PLAYER



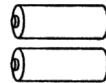
OWNER'S MANUAL



PARALLEL PC  
CONNECTING CABLE



EARPHONES



BATTERIES(2 x AAA)



LEATHER CASE



INSTALLATION CD



HAND STRAP

## BEFORE USING MP-1000

### ■ Minimum System Requirements

- Microsoft Windows 95/98
- 16 MB RAM or higher
- 30MB available hard disc space or larger
- Intel® Pentium or compatible Processor
- 1 External Parallel Port
- CDROM Drive
- Installed sound card & speakers
- Internet access for the download of MP3 files  
(Recommended modem speed is 56K)

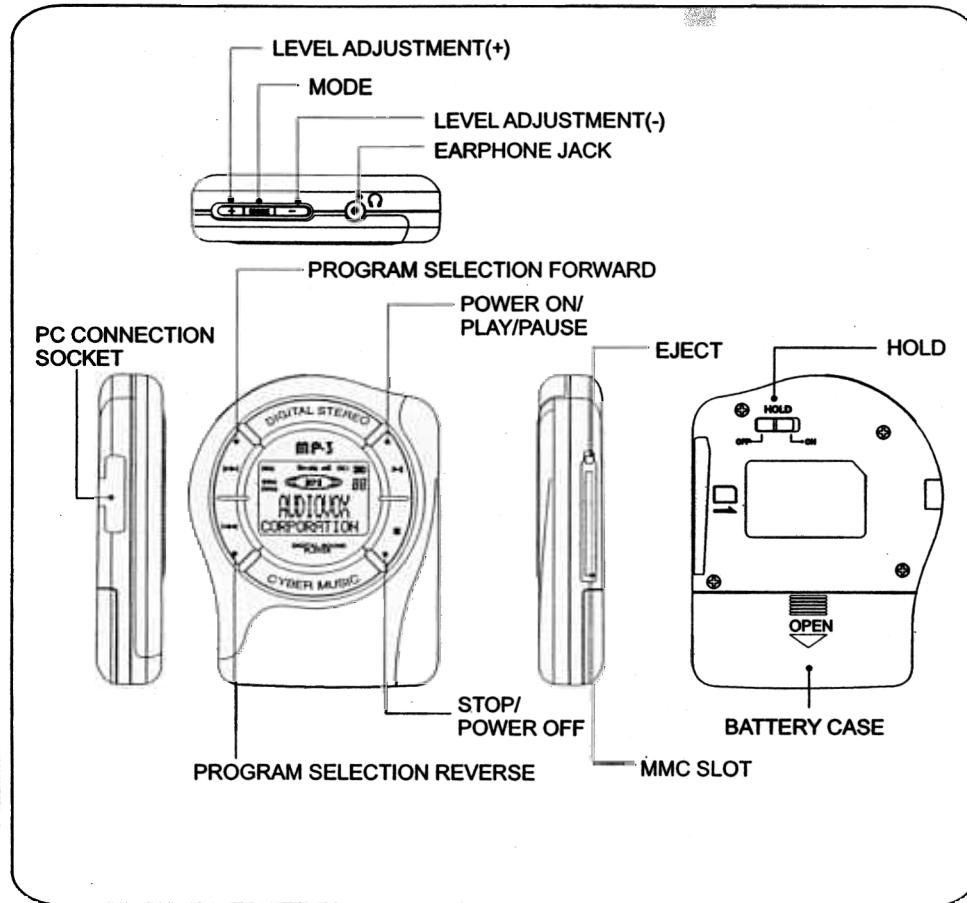
### ■ MP3 Internet Sites

- You can obtain MP3 files and the latest information on MP3 technology from a growing number of Internet sites. The following are some sites you might want to explore:

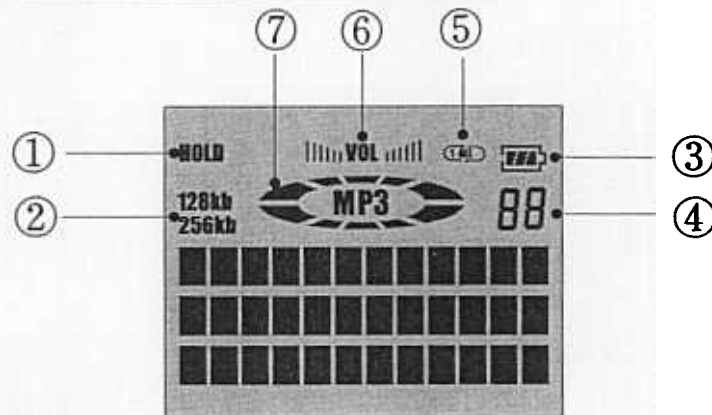
<http://www.audiovox.com>  
<http://www.mcy.com>  
<http://www.mp3.com>  
<http://www.mp3now.com>  
<http://www.goodnoise.com>  
<http://www.mp3-2000.com>  
<http://www.nordicdms.com>  
<http://www.lycos.com>  
<http://www.mp3site.com>  
<http://mp3.lycos.com>

## MP-1000 CONTROL BUTTONS

4



## MP-1000 LCD DISPLAY

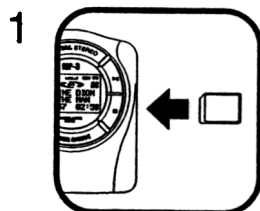


1	<b>HOLD</b>	Indicates that the hold switch has been turned on. Prevents accidental or unintended operation of any button.
2	<b>128kb</b> <b>256kb</b>	Indicates the bit rate at which the MP3 file was created. The higher number equals higher quality audio output. (Measured in kilobits per second (Kbps))
3		Indicates current battery status. Three bars indicates a fully charged battery. This icon is always on while the unit is operating.
4	<b>88</b>	Displays track number
5		Indicates repeat function is activated
6		Indicates volume level
7		Indicates MP3 file is playing

## OPTIONAL FLASH MEMORY MULTIMEDIA CARD [MMC]

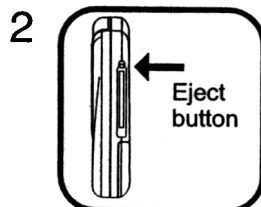
6

- The MP-1000 player can store and play additional MP3 files by inserting an optional flash memory card into the MMC slot.



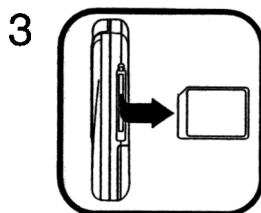
### Inserting The Flash Memory Card

Turn off power by pressing and holding the Stop button (■) for 2 seconds. Insert multimedia card into slot. (fig. 1)



### Ejecting The Flash Memory Card

If you have a flash memory card inserted into the MP-1000 player, remove it by pressing the Eject button. (fig. 2,3)

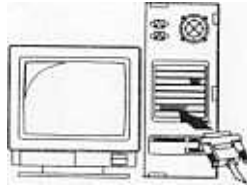


Note : Do not remove the Flash Memory Card while unit is on.



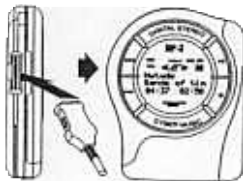
## CONNECTING THE MP-1000 TO YOUR PC

First, please make sure your parallel port is set to ECP mode in the system BIOS. See below for more information on how to set ECP mode. To transfer MP3 files to your MP Player, a connection between your PC (personal computer) and the MP-1000 is necessary:



Connect the supplied PC connecting cable to your computer's parallel printer port.

2



Turn on the MP-1000 by pressing the Play button (▶) and connect the PC connecting cable as shown.



### How to set ECP mode:

Enter the system BIOS by pressing <F2> or <Del> when prompted at startup. Set the LPT (serial/parallel) port to ECP mode. For more details, please refer to the PC manual or consult with your computer's technical support group.

## SOFTWARE INSTALLATION

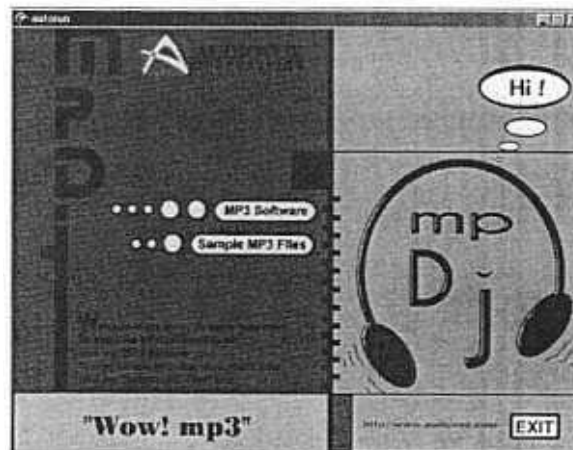
8

There are three components to the MPDJ Software Suite:

- **Player** : Allows you to play the MP3 files stored on your computer.
- **Encoder** : Converts CD Audio (Pre-recorded CDs) into MP3 files. Once in the MP3 format, you can use the Downloader to copy the files onto the MP-1000.
- **Downloader** : Transfers files between your PC and the MP-1000.

Before you can use the above programs, you must install them using the CD that came in your MPDJ package. Follow the steps below:

1. Turn on your computer.
2. After Windows 95/98 has finished its startup, insert the MPDJ Installation CD into your computer's CD-ROM Drive. This is usually your D-Drive.
3. The following install screen will appear on your display:



4. Click the "MP3 Software" icon to install the MPDJ Software Package. Follow the Installation prompts accordingly.
5. To copy sample MP3 files onto your computer, click the "Sample MP3 Files"

If the above screen does not appear, run setup manually by doing the following:

- Click the "START" button on the Windows Taskbar
- Click "RUN" and type: D:\INSTALL\SETUP.EXE  
(Assuming "D" is the letter of your CD-ROM Drive)
- Click "NEXT" to continue, and follow the installation prompts accordingly.

## OBTAINING & MANAGING MP3 FILES

You may obtain MP3 files from the Internet (see list of web sites on page 3) or convert them from the audio tracks of the CDs in your collection. Converting using the "Encoder Software" is discussed later in the manual on page 12-15.

It is recommended that you keep all of your MP3 files in one directory on your computer (i.e.-C:\ My MP3 Files).

### Downloading from the Internet

The following will show you an example of how to download an MP3 file from the internet. Ensure that you have a valid internet connection (i.e.-America Online or CompuServe). Connect to the internet and use your web browser (Internet Explorer or Netscape) to go to the following web site:

[www.mp3.com](http://www.mp3.com)

- To learn more about MP3, click the "Getting Started" on the above web page. This will guide you in the fundamentals of MP3.
- Otherwise, select a genre from the list on the right side of the page (i.e.-CLASSICAL)
- Within that genre, choose a subcategory (i.e.-CHAMBER MUSIC)



- You will now see a list of songs within that category. Click on one that interests you.
- Click "Download" as shown in the sample above. You will then be asked where you want to download the file. Specify the directory where your MP3 files are located:



## MPDJ PLAYER

10

### ■ Using The MPDJ Player

The MPDJ Player allows you to play different music formats (i.e.-MP3 Files) that are located on your computer. It can be accessed by clicking its icon in the Windows Start Menu.

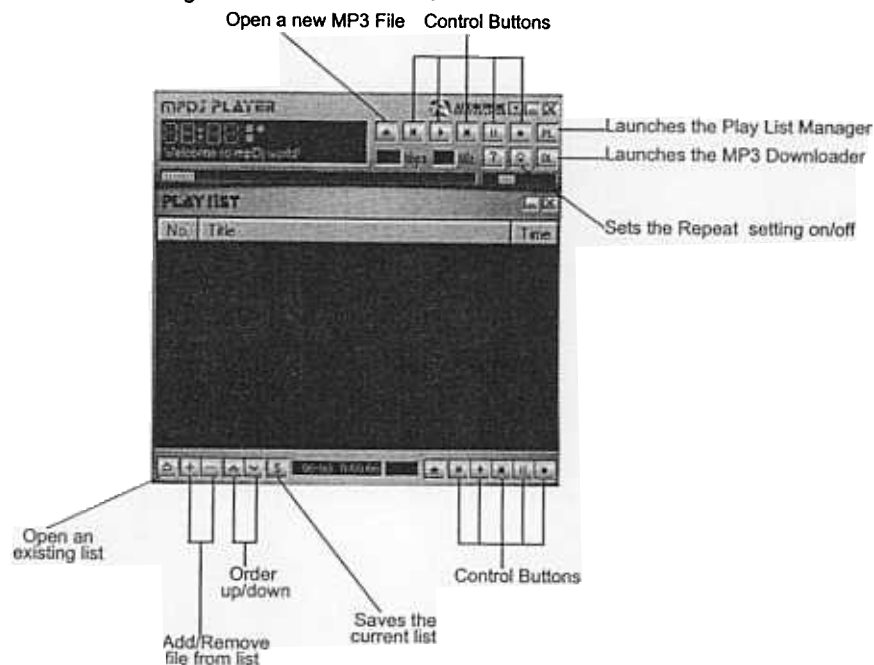
START → PROGRAMS → MPDJ SOFTWARE → MP3 PLAYER

You will be asked whether you wish to register the player as your default MP3 player. If you click yes, the MPDJ Player will be used to open all MP3 files.

There are two components to the player:

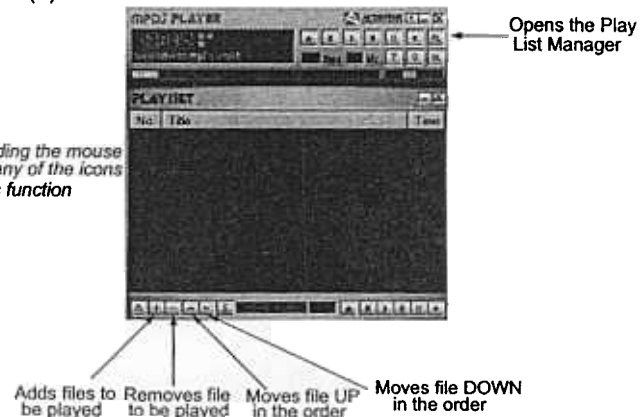
- **Player** : Graphical Interface that holds control buttons (i.e.-PLAY, STOP, VOLUME)
- **Play List** : Manages the playing of selected files you wish to listen to on your computer

Below is a listing of the function buttons



1. Start the MP3 Player from the Windows Start Menu.
2. Click the "PL" button in the upper right corner to open the Play list window as below
3. Click the (+) icon to add a track to the list.

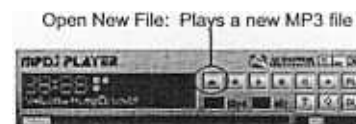
*Note that holding the mouse pointer over any of the icons will display its function*



4. Choose the directory that contains your MP3 files, then double click on the selected file you wish to play.
5. The selected file will now be displayed on the Playlist. You may add more files by repeating Step #4. Click the Play button (▶) to begin playback.
6. To remove files from the Playlist, click the (⊞) button on the bottom of

## ■ Playing A Single MP3 File

You may wish to play one file at a time. To do so, simply click the "OPEN NEW FILE" button on the player. You will be then prompted to select a file from the directory where your MP3 files are stored.



## ENCODER

12

### ■ Using The MP3 Encoder

The second component of the MPDJ Software is the "MP3 Encoder." The encoder takes a CD-Audio track and converts it to MP3 in two ways:

1. CD-Audio to MP3
2. CD-Audio → WAV → MP3

Launch the MP3 Encoder by clicking its icon in the Windows Start Menu:

START → PROGRAMS → MPDJ SOFTWARE → MP3 ENCODER



Rec : Converts CD-Audio or WAV to MP3

1. WAV : WAV to MP3
2. CD : CD-Audio to MP3

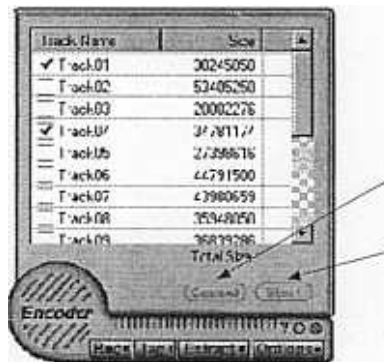
Tag : Changes the "Tag" of an MP3. The tag is the information of an MP3 file (I.e.-Artist, Song Title)

Extract : Converts CD-Audio Tracks to WAV

Option : Sets miscellaneous options for recording

Follow the steps below once you have launched the MP3 Encoder:

1. Insert a pre-recorded Audio CD into your CD-ROM drive.
2. Exit from any program that attempts to play the above CD.
3. On the MP3 Encoder, click "REC" to display the window of 'Rec; Wav → MP3'.
4. Click the "CD" icon to display the following window :



Returns to Main Window

Starts conversion to MP3

5. Mark the check boxes of the tracks you wish to convert by clicking them. You may select as many as you like.
6. Click "START" to begin the encoding process.
7. You will then be prompted where to store the new MP3 files. Select a directory in which you want to store the new MP3 files. Use your existing MP3 folder.
8. Conversion will then start.

Follow the steps below once you have launched the MP3 Encoder:

1. Insert a pre-recorded Audio CD into your CD-ROM drive.
2. Exit from any program that attempts to play the above CD.
3. On the MP3 Encoder, click "EXTRACT" to display the following window:



Returns to Main Window  
Starts conversion to WAV

4. Mark the "Check Boxes" of the tracks you wish to convert by clicking them. You may select as many as you like.
5. Click the "START" button to begin the encoding process.
6. You will then be prompted where to store the new WAV files. Just as you have created a directory for MP3 files, you may wish to create a directory for temporary WAV files. Note this directory for the next few steps.



Browse Buttons

7. When finished, click "OK" to return to the main encoder view. You must now convert the new WAV file(s) to MP3. Do so by clicking "REC".
8. Click the "BROWSE" button (as shown on the left) to select the source WAV file you created in step #6.
9. Then click the "BROWSE" button (for Target File) to select the location of the new MP3 file. Use your existing MP3 folder.
10. Click "START" to begin the conversion.



The MPDJ Encoder is set at the factory level for optimum sound quality and speed. However, fine changes can be made to the encoding process. If you click the "OPTIONS" button on the main view, you will see the following window:



#### Some notes on encoding options:

**Diff Block** : Allows channels to have different block types in MS stereo channel.

**Bit Rate** : Sets the bit rate. As the bit rate is set higher, the file size gets larger and sound quality gets better.

**VBR (Variable Bit Rate)** : Variable Bit Rate encoding will ensure a consistently high audio quality by making intelligent bit allocation decisions. The VBR-0 setting will yield the best quality (but a larger file size) while VBR-9 will have less sound quality but with a smaller size file. The recommended option is VBR-4.

#### **Channel Modes :**

**STEREO** : Stereo includes two independent channels. The total bit rate remains constant, but the split between the channels can vary. The encoder uses this flexibility to improve quality by allocating more bits to the channel with the more dynamic signal. Use the stereo setting for best quality stereo audio at higher bit rates.

**DUAL CHANNEL** : Dual channel includes two completely independent channels (left/right), each with half the total bit rate. Dual Channel is generally used for multi-lingual audio programs.

**JOINT STEREO** : Joint Stereo shares certain bits between high frequency left and right channels. Some frequencies will be recorded in monophonic at this setting. This improves compression efficiency at a slight loss of stereo separation. Use Joint Stereo to obtain the best overall quality at mid-to-lower bit rates.

**MS STEREO** : A method of exploiting stereo irrelevance or redundancy in stereophonic audio programs based on coding the sum and difference signal instead of the left and right channels.

**MONO** : Mono is a single channel of audio. Use the Mono setting with monophonic sources or when you need the lowest possible bit rates.

As stated earlier, the "Tag" of an MP3 lists its information. This is an optional step but if filled out, will appear in the MP-1000 LCD when it is played. To edit the tag of an MP3 file:

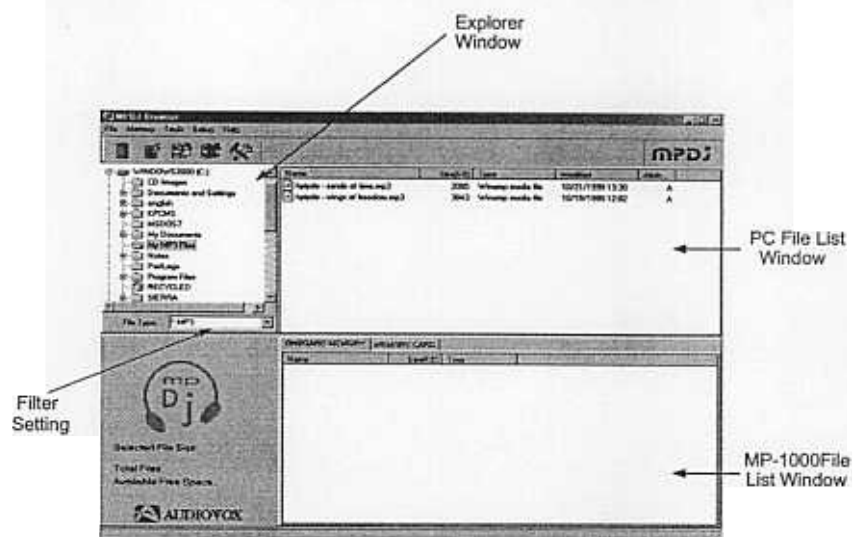
1. Click the "TAG" button on the Main Encoder View.
2. You will be prompted to select an MP3 file to edit. Select the desired file from your MP3 folder.
3. The following window will appear. Enter any information you wish, then click "OK" to finish.

The screenshot shows a 'TAG' dialog box for editing MP3 metadata. The 'Year' field is set to 1999. The 'Title' field contains 'Sands of Time', 'Artist' contains 'Hytyde', and 'Album' contains 'The Best of Hytyde'. The 'Genre' is set to 'Pop/Rock' via a dropdown menu. There is an empty 'Comment' text area. At the bottom right are 'Open', 'Cancel', and 'OK' buttons. On the left side, there is a sidebar with a circular 'Encoder' icon, a progress bar, and buttons for 'Rec', 'Tag', 'Extract', and 'Options'.

### ■ Using The MP3 Downloader

The MPDJ Downloader is used for transferring MP3 files between your computer and the MP-1000. In addition, this software also manages the order of stored files on the MP-1000. Start the program by clicking its icon in the Windows Start Menu:

START → PROGRAMS → MPDJ SOFTWARE → MP3 DOWNLOADER



If an error message appears stating, "Device Not Connected," please make sure of the following:

1. MP-1000 is connected to the PC Printer Port through the supplied accessory Cable
2. The unit is powered on (Press the Play button (▶) on the MP-1000)
3. The MP-1000 is in normal mode (Not 'Shuffle' or 'Intro')
4. Your PC's parallel port is working correctly (Are you able to print to a printer?)
5. Pressing the [F5] button on your keyboard will refresh the program display. Use the [F5] button once you have powered on the unit and connected it properly.

### MP3 Downloader Functions & Windows:

18

**Directory Browser :** This window indicates the directory where your MP3 files are stored. Browse through the directories on your hard drive and select the folder where your MP3 files are located.

**PC File List Window :** Displays the contents of the folder selected in the Directory Browser. You may transfer the files in this window to and from the MP-1000.

**MP-1000 File List Window :** Displays the contents of the MP-1000. The two tabs show the files located on the "ONBOARD MEMORY" as well as the files on the "MEMORY CARD" if one is installed. You may purchase this optional card through Audiovox Customer Service at (800) 290-6650

**Filter Setting :** Sets which files are displayed in the PC File List Windows. You may wish to keep this set to \*.MP3 so that only MP3 files are shown. If you change this setting to \*.\* (All Files), all files will be displayed.

#### **Transferring files to the MP-1000 from your computer :**

1. Ensure that your MP-1000 is connected and powered on.
2. Display the selected files you wish to download in the PC File List Window.
3. Either Right-Click on the selected file and click DOWNLOAD or simply click the Download icon on the toolbar. A confirmation will appear stating the download status.

#### **Transferring files to the computer from the MP-1000 :**

1. Ensure that your MP-1000 is connected and powered on.
2. Display the selected files you wish to upload in the MP-1000 FileList Window
3. Either Right-Click on the selected file and click "DOWNLOAD" or simply click the Download icon on the toolbar. A confirmation will appear stating the download status.

#### **Changing the order of files on the MP-1000 :**

1. Select the file you wish to re-order from the MP-1000 File List Window.
2. Click, hold, and drag the file to its new position. Let go of the mouse button.
3. Your selected file should now be in its new position.

#### **Deleting Files :**

1. Select the file you wish to delete from either File List Window.
2. Click the Trash icon on the toolbar to delete it.

#### **Reformatting the MP-1000 Memory :**

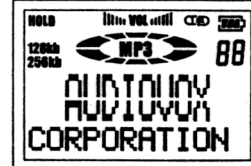
Due to normal usage, some portions of space are lost in the onboard and MMC memory of your MP-1000. Use the Reformat icon (which deletes ALL data on the MP-1000) from time to time as a maintenance measure to reclaim all available free space on your MP-1000.

## HOW TO USE THE MP-1000

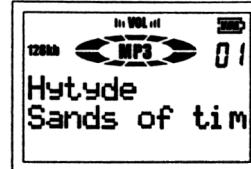
## ■ Power On/Off

1

Press the Play/Pause button (▶||) once. Audiovox Corporation will appear on the display.



- Your MP-1000 has been pre-loaded with music for demonstrational purposes. The artist, song title and total number of files will be shown on the display.

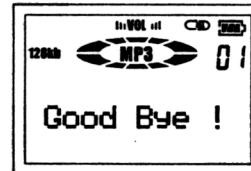


- If no music files are available in the MP-1000 a "No Music Please Download" message will blink on the display.



2

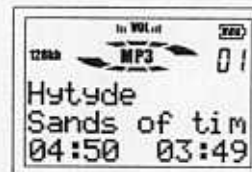
Pressing the Stop button (■) momentarily will end play of the current selection. Pressing and holding the Stop button for 2 seconds will turn the MP-1000 off.



## 3

## ● LOW BATTERY/ AUTO POWER OFF

The MP-1000 will automatically turn itself off when battery voltage is low.



Prior to automatic shut down, the MP-1000 will display the "Check Batt" message.



"Good Bye!" message will be displayed just before powering off.



## 4

## ● HOLD ON/ AUTO POWER OFF

If Hold switch is "ON" and power button is pressed, the MP-1000 will turn itself off automatically.



Prior to automatic shut down, the MP-1000 will display the "Check Hold" message.





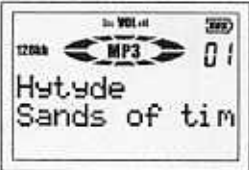
"Good Bye!" message will be displayed just before powering off.



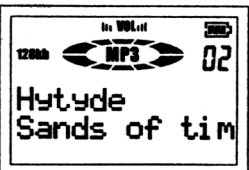
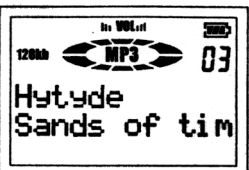
## ■ Downloading

22

- After stopping play of the music, you can delete or store the music files by using the downloader program on your computer.

1	Select music files and execute downloading. The music files will transfer to the MP-1000.	
2	When downloading is completed, the total number of downloaded music files will be displayed.	
3	If no music files were stored in MP-1000 before downloading, the first new music file will be ready to play and be displayed on the LCD. If some music files were previously stored prior to downloading, the first selected music file will be ready to play and be displayed on LCD.	

## ■ How To Select The Music

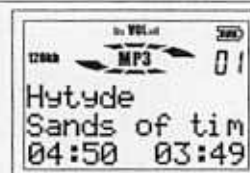
1	<ul style="list-style-type: none"> <li>● The current music selection information will be display on the LCD in the following format:  1st line : artist name  2nd line : title of music</li> </ul> <p>Press the (▶▶,◀◀) buttons to select the music files stored on the MP-1000.</p>	 
---	--	--



## ■ Play(▶||)

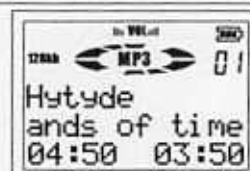
1

Once a music file selection has been made, press the Play button (▶||) to begin play. The Play icon will rotate clock wise. Artists' name will be displayed on the 1st line, and the music title on the 2nd line. Its playing time and total duration time are shown on the 3rd line.



2

Music title will scroll and the play time will increment.



## ■ Pause(▶||)

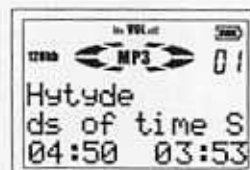
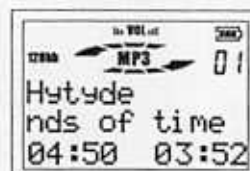
1

Press the Pause button(▶||) to temporarily stop playing music. Pause will appear and the Play icon will blink on the display.



2

To resume play, press the Pause button(▶||) again.

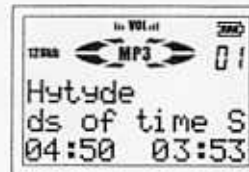
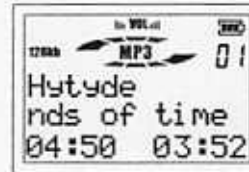


- The Cue/Review enables you to select the position of play in the current music file.

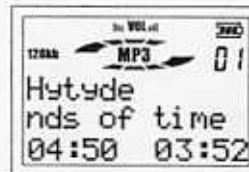
1

While playing the music selection, press and hold the (⏭) button to advance rapidly in the forward direction or the (⏮) button to advance rapidly in the reverse direction. The elapsed time will be shown on the display.

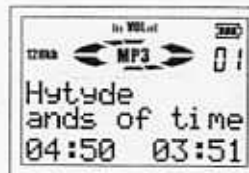
Press and hold the (⏮) button



keep holding (⏮)



keep holding (⏮)



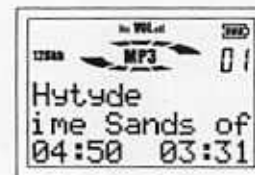
keep holding (⏮)

⋮



Release the key

Release the button when the desired position in the music file is located. Play will resume from the new position.



1

While the music is being played, press the <+> or <-> buttons on the top of the MP-1000 to adjust the volume level. The volume level will be displayed.

The default volume setting is 10.

Maximum setting is 20.

Minimum setting is 01.

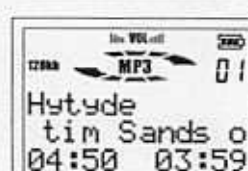
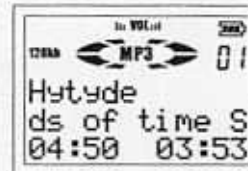
If no button is pressed within 3 seconds, the MP-1000 will return to play mode with the new settings.

(+)

(+)

(-)

(3 sec)



1

Pressing the mode button once will display the current volume level. The (+) and (-) buttons can be used to adjust the volume level at this time.

A second press of the mode button will display the wide (surround sound) effect.

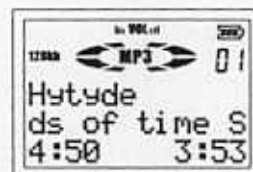
Default setting for WIDE is OFF.

Press the (+) button to turn WIDE: ON.

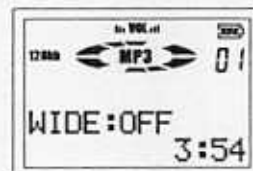
Press the (-) button to turn WIDE: OFF.

If no buttons are pressed within 3 seconds, the MP-1000 will return to play mode with the new settings.

(M)



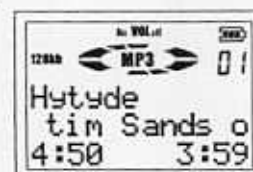
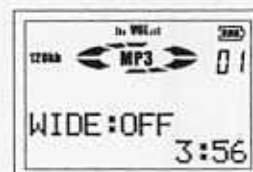
(+)



(-)



(3 sec)



## 2

## ●BASS

A third press of the mode button will display the bass level.

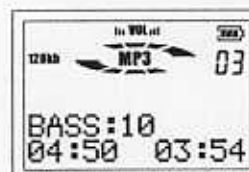
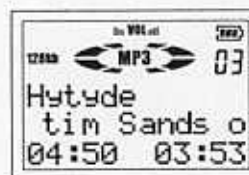
The (+) and (-) buttons can be used to adjust the bass level at this time.

Default setting for bass is 10.

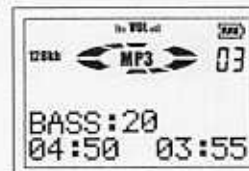
Maximum setting is 20.

Minimum setting is 01.

If no buttons are pressed within 3 seconds, the MP-1000 will return to play mode with the new settings.



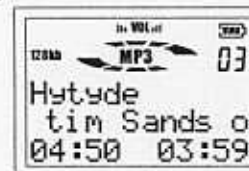
(+)



(+)



(3 sec)



## 3

## ●TREBLE

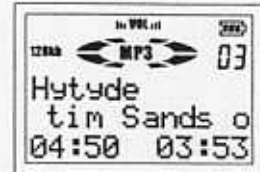
Pressing the mode button four times will display the treble level. The (+) and (-) buttons can be used to adjust the treble level settings at this time.

Default for treble setting is 10.

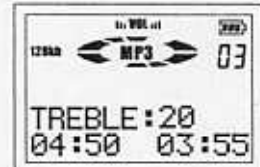
Maximum setting is 20.

Minimum setting is 01.

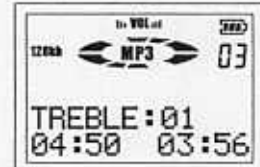
If no buttons are pressed within 3 seconds, the MP-1000 will return to play mode with the new settings.



(+)



(+)



(3 sec)



# INTRO SCAN

Pressing the mode button five times will display the Intro Scan feature.

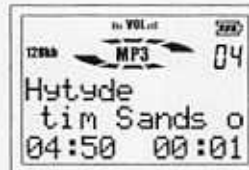
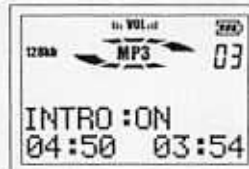
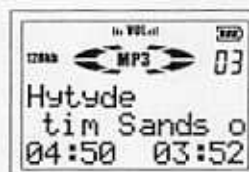
Intro Scan will play the first 10 seconds of each music file stored on the MP-1000.

After entering the Intro Scan through the mode button, you can press either the (+) or (-) button to activate the feature.

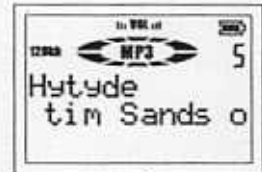
(+) or (-)

When the desired selection is reached, press the Play button (▶) to cancel the Intro Scan and normal play will continue.

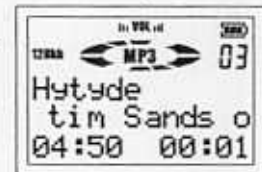
(10 sec)







...



Setting the Repeat mode to ALL, will allow the unit to Intro Scan play every music file for 10 seconds repeatedly in a loop.

- Users can change the music to be intro scanned by using the (▶▶) or (◀◀) button while the unit is scanning. In this case, intro scanning stops right before the last selected music.

## 5

## ● REPEAT 1 &amp; REPEAT ALL

Pressing the mode button six times will display the Repeat play feature. There are two Repeat Play modes.

Repeat 1: Will repeatedly play the current music selection.

Repeat ALL: Will repeatedly play all the music selections stored in the MP-1000.

After entering the Repeat feature through the mode button, use either the (+) or (-) buttons to select Repeat 1 or Repeat ALL.

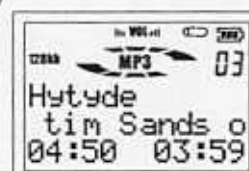
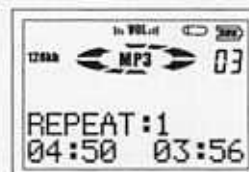
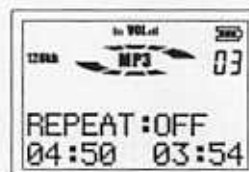
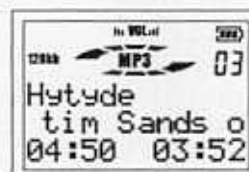
Default setting for Repeat is OFF.

(+)

(+)

(3 sec)

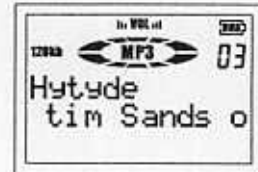
If no buttons are pressed within 3 seconds, the MP-1000 will return to play mode with the new settings.



## 6

## ● SHUFFLE

Pressing the mode button seven times will display the Shuffle feature. The Shuffle feature will play the stored music files in random order.

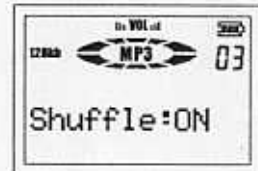


The default setting for Shuffle is OFF.



(+)

Press the (+) button to turn Shuffle: ON.  
Press the (-) button to turn Shuffle: OFF.



7

# ●CONTRAST

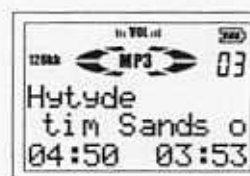
Adjust LCD light.  
Pressing mode adjust the (+) and (-)  
buttons.

Default for contrast setting is 05.

Maximum setting is 10.

Minimum setting is 01.

If no buttons are pressed within  
3 seconds, the MP-1000 will return  
to play or ready mode with the new  
settings.



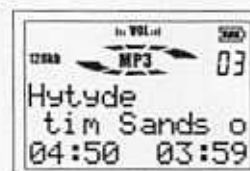
(+)



(-)



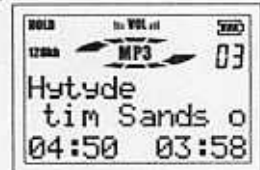
(3 sec)



1

The Hold switch on the back of the MP-1000 can be used to prevent accidental or unintentional operation of the unit by locking the buttons.

With the Hold switch in the ON position, all buttons will be locked. (HOLD →)  
Be sure to set the Hold Switch to OFF to resume normal operation of the MP-1000 feature/functions.



(HOLD ←)



## ■ Other

- LCD backlighting is on for 2 seconds when any button is pressed.

## TROUBLESHOOTING

36

- The following is a Basic Troubleshooting Guide for the MP-1000. Should you have difficulty determining a problem with your unit, call 800-290-6650

1	Unit will not turn on and nothing is displayed on the LCD	Check that the batteries are properly installed.
2	Buttons are not working	Check the position of HOLD switch. HOLD switch must be OFF for buttons to work.
3	Music will not play	Check that MP3 music files have been loaded into internal and/ or external memory via MPDJ Downloader Software.
4	Cannot recognize files on the MMC.	Use the reformat function from the MPDJ Downloader Software.
5	Cannot insert the MMC	Ensure that there is nothing in the MMC slot.

## CAUTIONS IN USING AND STORING THE MP-1000

1	Avoid strong shock	Normal shock when in use during normal activities will not affect the MP-1000's performance. Dropping the unit from a high position or subjecting it to severe shock may damage the unit.
2	Avoid water	Do not expose the MP-1000 to water. This will damage the unit.
3	Temperature extremes	Avoid exposure to high moisture, very strong sunlight & extreme hot/cold temperatures.

## MP-1000 SPECIFICATION

38

### ■ MP-1000 Player

Processor	20MHz, 8bit MCU
Memory	32MB Built-in (expandable to 64MB)
Voltage Input	3VDC
Battery	2 x 'AAA' size alkaline battery
LCD Display	Alphanumeric 12 characters x 3 lines
Dimension (W*H*D)	63.4mm x 83mm x 18.3mm
Weight	56g (Without batteries)
Case	Aluminum, Poly Carbonate
File Transfer Speed (from PC to MP-1000)	~40sec/4Mb File
Memory Socket	Multimedia Card (MMC)
S/N Ratio	95dB
Output of Earphone	14mW (Max)
Frequency Range	20hz~20Khz (±1dB)

### ■ Accessories

Earphones	Hand Strap
Parallel PC Connecting Cable	Home Stereo Adapter
32MB Flash Memory Card (MMC)	Leather Carry Case



## FCC NOTICE

This device complies with part 15 of the FCC Rules. Operation is subject to the condition that this device does not cause harmful interference.

- NOTE: This unit was tested with shielded cables on the peripheral devices. Shielded cables must be used with the unit to insure compliance.
- NOTE: The manufacturer is not responsible for any radio or TV interference caused by unauthorized modifications to this equipment. Such modifications could void the user's authority to operate the equipment.



150 Marcus Blvd, Hauppauge, NY 11788, USA  
<http://www.audiovox.com>  
(800) 290-6650

FORM No. 128-5652  
Printed in Korea