

# Manual



**AVOX | Jukebox**

movie :: music :: photo :: storage

# Contents

<b>Introduction.....</b>	<b>3</b>
Specifications .....	3
Precautions.....	4
System Requirements.....	4
Package Content .....	4
Product Overview.....	5
<b>1. Use as External USB HDD.....</b>	<b>6</b>
<b>1.1 Insert Hard Disk.....</b>	<b>6</b>
<b>1.2 Format Built-in HDD via USB .....</b>	<b>7</b>
1.2.1 Windows 98SE, ME.....	7
1.2.2 Windows 2000.....	9
1.2.3 Windows XP .....	11
<b>1.3 Copy Data via USB .....</b>	<b>13</b>
1.3.1 Windows 98SE.....	13
1.3.2 Windows ME.....	14
1.3.3 Windows 2000, XP .....	15
1.3.4 Linux .....	16
1.3.5 Mac .....	16
<b>2. Use as Multimedia Player .....</b>	<b>17</b>
<b>2.1 Connect to External AV Device .....</b>	<b>17</b>
2.1.1 Connect Video Cable .....	17
2.1.2 Connect Audio Cable .....	18
2.1.3 Connect External IR Receiver.....	18
<b>2.2 Basic Setup .....</b>	<b>19</b>
2.2.1 Video Setup .....	19
2.2.2 Audio Setup .....	21
2.2.3 Other Setup .....	22
2.2.3.1 TV Type Setup .....	22

2.2.3.2 Jpeg File Preview Setup .....	22
2.2.3.3 Language Selection Setup.....	22
2.2.3.4 Check Firmware Version.....	22
<b>2.3 Basic Screen Menu .....</b>	<b>23</b>
2.3.1 Media Type Selection .....	23
2.3.2 File Selection.....	23
<b>2.4 Play Video Files .....</b>	<b>24</b>
<b>2.5 Play DVD Files.....</b>	<b>27</b>
<b>2.6 Play Music Files.....</b>	<b>29</b>
<b>2.7 Play Photo Files.....</b>	<b>31</b>
<b>2.8 Make a Play-List.....</b>	<b>33</b>
<b>2.9 Remote Controls.....</b>	<b>34</b>
<b>2.10 Others .....</b>	<b>35</b>
2.10.1 Music Slide Show.....	35
2.10.2 MP3 Quick Play .....	35
2.10.3 Change Background Image .....	35
2.10.4 Change OSD Text Color .....	35
2.10.5 Firmware Upgrade .....	35
<b><i>Technical Support.....</i></b>	<b><i>35</i></b>

# Introduction

The AVOXJukebox is easiest way to turn your 2.5" notebook hard drive into a portable audio/video player. With a simple to use interface, the AVOXJukebox can play movies, music, or a slideshow of your pictures when connected to AV inputs on any television. Also, since it utilizes high speed USB 2.0, you can get your data from your computer to your 2.5" hard drive up to 40 times faster than USB 1.1. And since it also doubles as a portable enclosure, you can store your documents, programs, or any other data on the AVOXJukebox as well.

- Digital Multimedia Player via Home TV or Car TV
- USB 2.0 External Storage via PC(NTFS, FAT32)
- Audio - Stereo, Digital Coaxial 5.1ch. Sound
- Video - Composite, HD Component 480p, 720p, 1080i
- DVD Manager - Playback of DVD File same as Original DVD Title
- Easy Firmware Upgrade.

## Specifications

Product Name		AVOXJukebox
Power		DC 5V / 2A
Weight		160g (without HDD) approx.
Dimension		80 x 148 x 24 mm approx.
Available OS		Windows 98SE/ME/2000/XP, Mac OS 9.0 Higher, Linux 2.4 Higher
USB Interface		480Mbps USB 2.0 (USB 1.1 Compatible) / Slave
HDD Type		2.5" IDE HDD
HDD File System		NTFS / FAT32
TV Type		NTSC / PAL
Supported Format	Movie	MPEG 1, 2, 4 (MPG, MPEG, AVI, M2V, DAT, VOB, IFO etc.) DivX, XviD (except GMC, Qpel option applied)
	Music	MP3, OGG Vorbis, WAV, WMA (except WMA9 pro.lossless)
	Photo	JPG(JPEG)
Video Output		COMPOSITE COMPONENT Y, Pb, Pr (480p, 720p, 1080i Progressive Scan)
Audio Output		STEREO L-R DIGITAL COAXIAL (DTS Pass-Through Only)
External IR		Support (Optional)
Working Temperature		0°C ~ 60°C
Working Humidity		10% ~ 50%

## Precautions

- ❑ We do not recommend storing sensitive or critical data on the AVOX|Jukebox. Due to the portable nature of the enclosure/media player, there is a greater likelihood of mishandling which may cause damage. We are responsible for the AVOX|Jukebox only and are at no point liable for data loss or any hard drive problems.
- ❑ In a car, we recommend you use a cigarette lighter adaptor that provides DV 5V/2A. We are not responsible for the damage or loss of data by using an incorrect cigarette lighter jack.
- ❑ Unplug all cables from the AVOX|Jukebox when it is not in use. Do not leave the power adaptor plugged in when not in use.
- ❑ Always handle the AVOX|Jukebox by its sides. The top & bottom aluminum cover may become warm/hot from hard drive activity.
- ❑ The AVOX|Jukebox does not support DivX/XviD encodings of video files that has GMC, Qpel option.
- ❑ The AVOX|Jukebox supports only pass-through for DTS Audio.
- ❑ Do not turn off power while a file is in use.
- ❑ If the length of USB cable is too long, connection issues may arise (Recommended : up to 3 meters maximum)
- ❑ A USB 2.0 Host Adaptor is required for the AVOX|Jukebox to operate at USB 2.0 speeds.
- ❑ **[IMPORTANT]** : If an unformatted HDD is inserted into the AVOX|Jukebox, a PC cannot detect the Mpeg4 Player. Make sure that the HDD is formatted. For "How to format a HDD, contact HDD manufacturer or the seller.
- ❑ Do not drop the unit or subject it to impact, especially during use. Doing so may cause damage to the unit or the hard drive. Please note that any problems with the hard drive must be dealt with by the hard drive manufacturer.
- ❑ We recommend you only use the supplied cables or accessories that are made specifically for use with the AVOX|Jukebox. Using other cables or accessories may inhibit the ability of the unit to perform properly, or cause damage.
- ❑ **[IMPORTANT]** : Store and operate the unit away from water and heavy moisture. If the AVOX|Player should become wet, unplug all cables from the unit immediately. Continued use under this condition may result in shock, physical damage to the unit and to any device it is connected to and damage or loss of data on the HDD.
- ❑ Do not touch the unit if your hands are wet. There may be a risk of shock and possible damage to the unit and to data on the HDD.
- ❑ Keep unit away from direct sunlight.
- ❑ Keep unit away from devices that transmit strong magnetic signal. It may cause data damage or loss on HDD.
- ❑ Any attempt to disassemble or reverse engineer any part of the AVOX|Jukebox is strictly prohibited. It will result in the voidance of the product warranty and possible damage to the unit and loss of data.

## System Requirements

- Interface : 480Mbps USB 2.0 High-Speed (USB 1.1 compatible)
- Power Supply : USB Bus Power or DC Power
- Available OS : Windows 98SE/ME/2000/XP, MAC 9.0 higher, Linux 2.4 higher
- Available System : Desktop / Laptop PC that has USB port(s)

## Package Content

### Primary Package

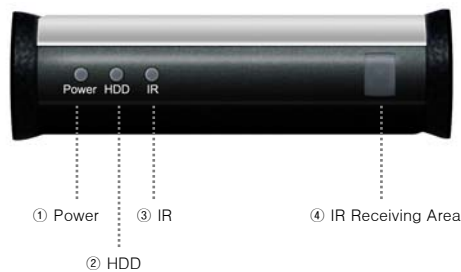
- AVOX|Jukebox ▪ Remote Control & Battery ▪ USB Cable, AV Cable( Composite + Stereo L-R),
- Component Video Cable ▪ Coaxial Audio Cable ▪ Power Adapter ▪ Windows 98 Driver CD ▪ User Manual

### Optional Package

- External Remote Control IR Receiver ▪ Cigar Jack Lighter

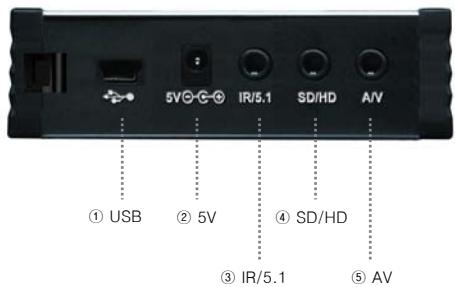
# Product Overview

- Front View -



Front View	① Power	Power LED
	② HDD	HDD LED
	③ IR	IR LED
	④ IR Receiving Area	IR receiving area for remote signals

- Back View -



Back View	① USB	Connect USB cable
	② 5V	Connect power Cable
	③ IR/5.1	Connect coaxial cable for 5.1 ch. digital audio output (or Connect external remote control IR receiver)
	④ SD/HD	Connect component Y, Pb, Pr cable for video output
	⑤ AV	Connect AV cable for composite video and(or) Stereo audio output

# 1. Use as External USB HDD

## 1.1 Insert Hard Disk

- ✓ Only compatible with 2.5" IDE Hard Disk for Laptop(or Notebook) PCs.
- ✓ Hard Disk should be "Master". However, if the Hard Disk supports "Single" mode, you need to try to set "Single" mode. You should not need to change the setting under most conditions.



① Grip the handles on the front panel and pull back to remove, then open the top cover.



② Pull the PCB out.



③ Grip HDD and insert it into the pins of PCB (be sure to align the 44 pins)



④ Secure HDD onto PCB by using the supplied screws.



⑤ Insert the PCB into the case, and then close the top cover and secure the front panel.

## 1.2 Format Built-in HDD via USB

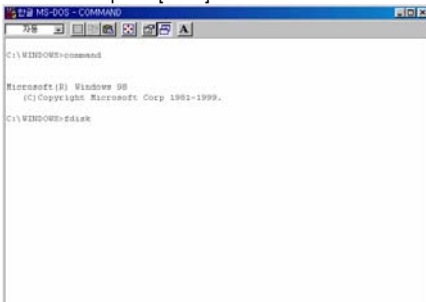
If the built-in HDD is not formatted, the PC cannot detect the hard disk drive. If this is the case, format the hard disk first by referring to the following guide. If the hard disk drive is already formatted, skip to “1.3 Copy Data via USB”.

### 1.2.1 Windows 98SE, ME

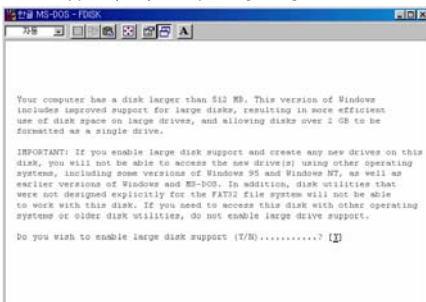
1) Install Windows 98 Driver. Find the driver at Windows 98 CD→ Windows 98 Driver Directory. After finishing installation, Connect the AVOX to your PC via USB cable.  
(If not detected, plug in the power cable)

2) Select [Start→Program→Accessories→MS-DOS Prompt] on Windows.

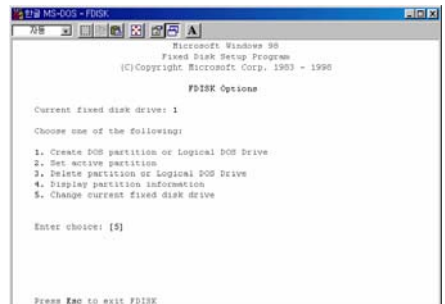
3) Type “fdisk” command at Command Prompt and press [Enter].



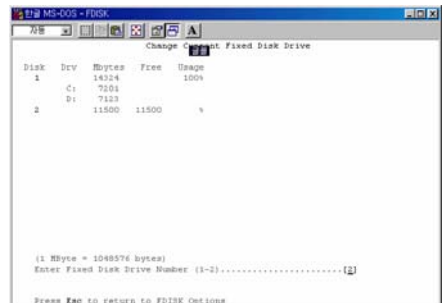
4) Type the “Y” at the “Do you wish to enable large disk support (Y/N)” and press [Enter].



5) Select “5. Change current fixed disk drive” and press [Enter].

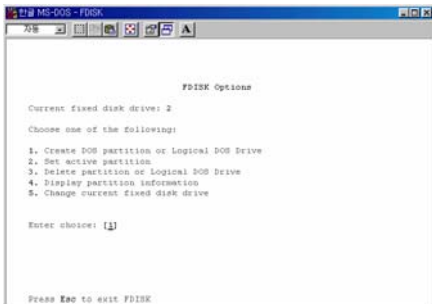


6) Type the last Disk number in 0% usage.

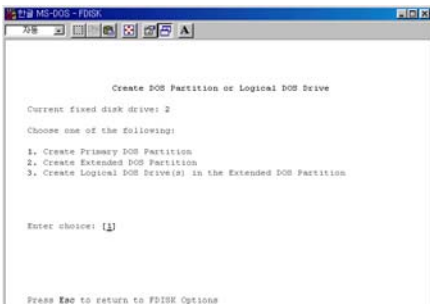


7) Select “1. Create DOS partition or Logical DOS Drive” and press [Enter].

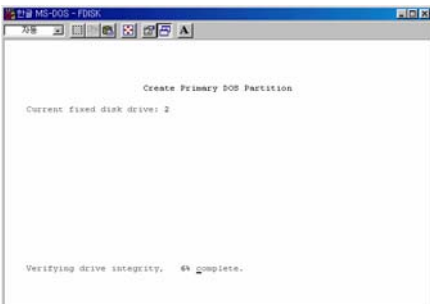




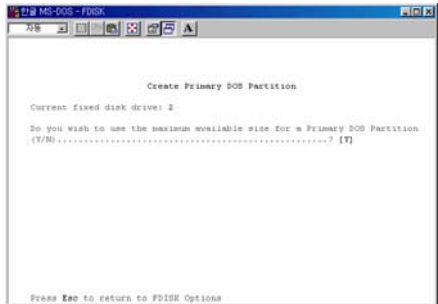
8) Select “ 1. Create Primary DOS Partition ” and press [Enter].



9) Wait until finishing verifying the drive integrity.

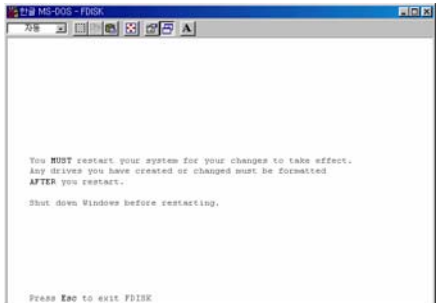


10) After finishing drive integrity verification, type “Y” at “Do you wish to use the maximum available size for a Primary DOS Partition (Y/N)”.

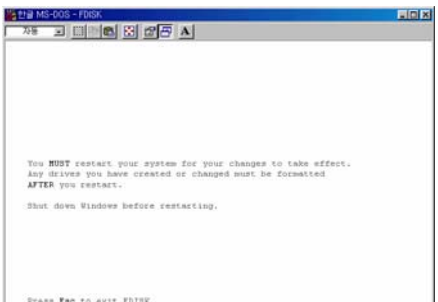


11) Type the capacity or % which you want to use and press [Enter].

12) Drive integrity verification will start again. After finishing that, press [ESC] key when the “Primary DOS Partition created, drive letters changed or added” message displays.

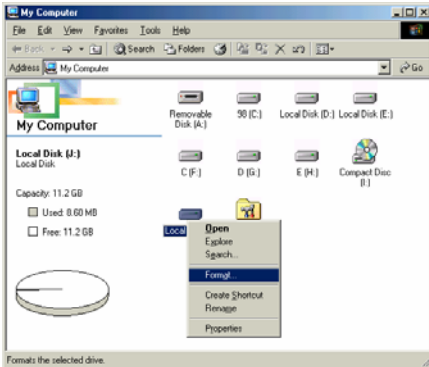


13) Press [ESC] key again. “ Shut down Windows before restarting” message will be displayed. Press [ESC] key finally for exiting FDISK.



14) Type " exit " command at " C:\WINDOWS> " and press [Enter] to return to your Windows screen.

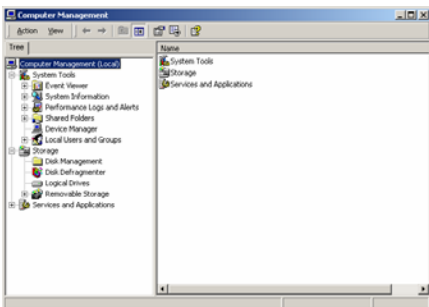
15) Unplug the AVOX and connect it again. New volume will appear in [My Computer]. Click the right mouse button on the new volume and select [Format].



## 1.2.2 Windows 2000

1) Connect the AVOX to your PC via USB cable.  
(If not detected, plug in the power cable)

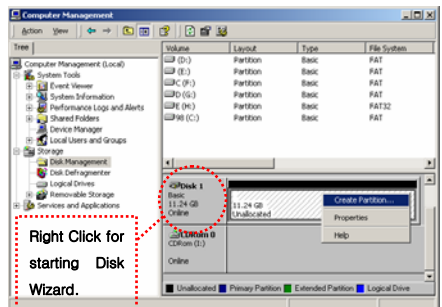
2) Select [Start → Settings → Control Panel → Administrative Tools → Computer Management → Disk Management] on Windows.



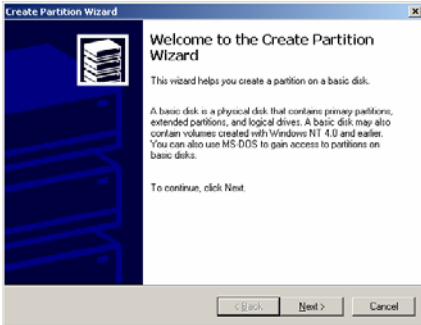
3) If the [Disk Signature and Upgrade Disk Wizard] is started, click Next to progress for finishing the wizard. If this wizard not started, right click the left area of unallocated drive at no. 4 figure, and start the wizard.

**WARNING:** Look for the unallocated drive. DO NOT assume it is disk 1.

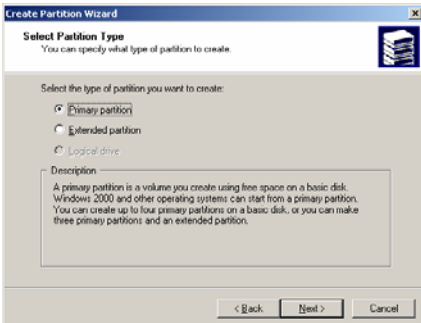
4) After finishing the [Disk Signature and Upgrade Disk Wizard], Right-click the Unallocated Drive. And then, click [Create Partition].



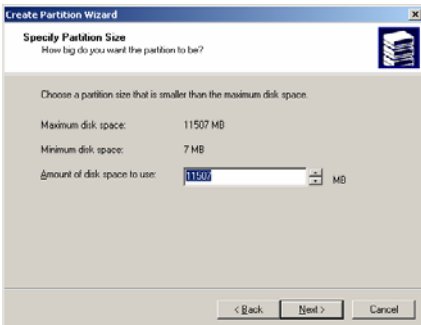
5) Click [Next] at the Create Partition Wizard Windows.



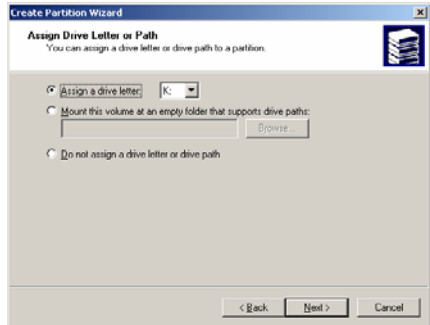
6) Check [Primary Partition] and click [Next].



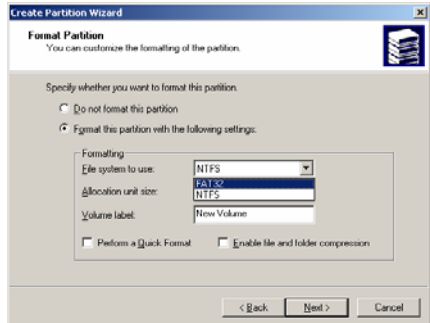
7) Type number that you want to use and click [Next].



8) Assign a drive letter and click [Next].



9) Choose FAT32 or NTFS at File system to use and click [Next].



- ✓ FAT 32 system is available on windows 98SE/ME/2000/XP, but NTFS system is available on windows 2000/XP only.
- ✓ If you choose FAT32 system on Windows 2000/XP, one drive letter's maximum size will be limited to 32GB. If you want to use one drive letter of 32GB more in FAT32, you have to format on windows 98SE/ME.
- ✓ If you want to create two or more partition with one disk drive, it will be recommended "Primary Partition"

10) After finishing Wizard setup, formatting will be progressed automatically.

## 1.2.3 Windows XP

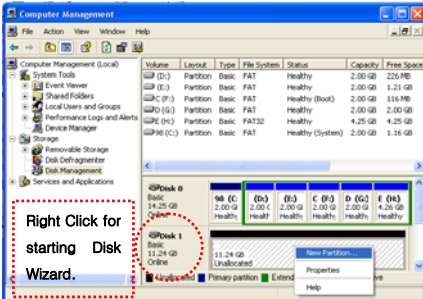
1) Connect the AVOX to your PC via USB cable.  
(If not detected, plug in the power cable)

2) Click [Settings→Control Panel→ Administrative Tools→Computer Management→Disk Management] on Windows. If you cannot find Administrative Tools at Control Panel, click “ switch to classic view” in the top left corner of the screen.

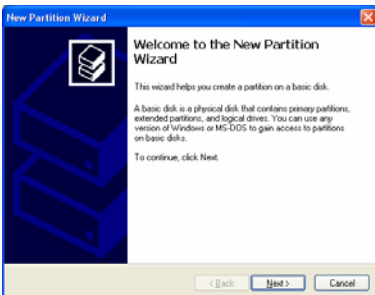
3) If the [Disk Signature and Upgrade Disk Wizard] starts, click [Next] to progress for finishing the wizard. If this wizard does not start, right click the marked left area of unallocated drive at figure no. 4 to start the wizard.

**WARNING:** Look for the unallocated drive. DO NOT assume it is disk 1.

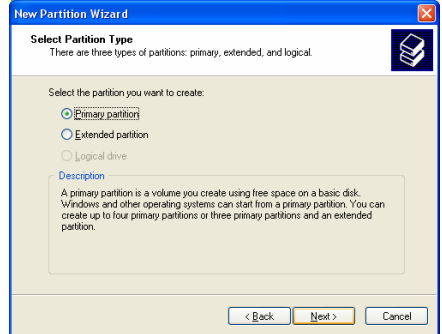
4) After finishing the [Disk Signature and Upgrade Disk Wizard], Right-click the 'Unallocated' Drive. And then, click [Create Partition].



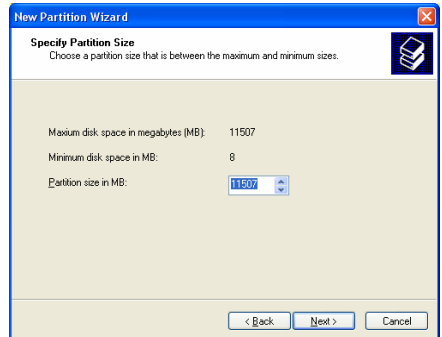
5) Click [Next] at the New Partition Wizard.



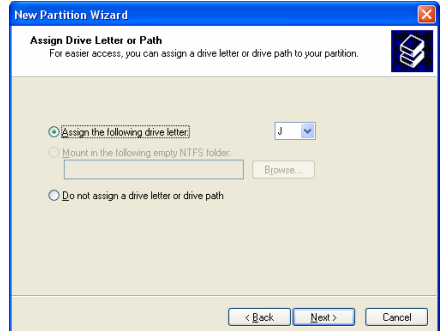
6) Check [Primary Partition] and click [Next].



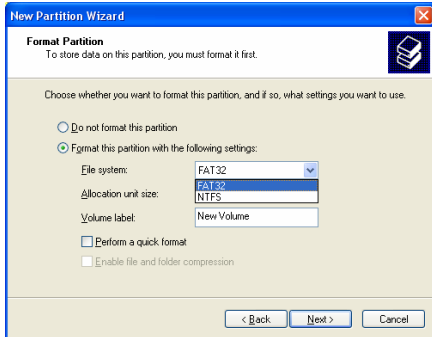
7) Type number that you want to use and click [Next].



8) Assign a drive letter and click [Next].



9) Choose FAT32 or NTFS at File system to use and click [Next].



- ✓ FAT 32 system is available on Windows 98SE/ME/2000/XP, but NTFS system is available on windows 2000/XP only.
- ✓ If you choose FAT32 system on Windows 2000/XP, one drive letter's maximum size will be limited to 32GB. If you want to use one drive letter of 32GB more in FAT32, you have to format on windows 98SE/ME.
- ✓ If you want to create two or more partition with one disk drive, it will be recommended "Primary Partition"

10) After finishing Wizard setup, formatting will progress automatically.

## 1.3 Copy Data via USB

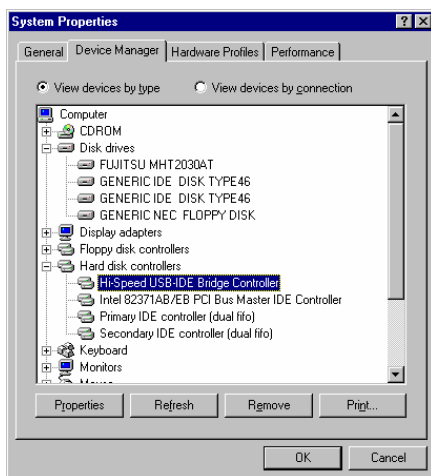
It is possible to use the AVOX|Jukebox as an external USB hard disk drive. You can copy data from your PC to the HDD in the AVOX via USB. However, the main use is to play media files from the hard disk on a TV set.

**\* When connecting to a PC, we recommend connecting the power cable to the AVOX.**

### 1.3.1 Windows 98SE

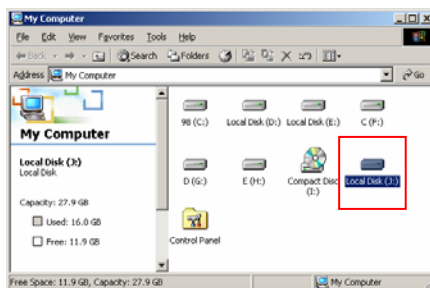
✓First, you have to install Windows 98 Driver before connecting PC. The driver is located at Windows 98 driver CD→Windows 98 Driver Directory. After finishing the driver installation, connect the AVOX to your PC via USB cable. If it is not detected, plug in the AVOX power cable.


1) After installing the driver, connect the AVOX. And then, check the driver installation at Windows [Start→Settings→Control Panel→System→Device Manager→Hard disk controllers→Hi-Speed USB-IDE Bridge Controller].

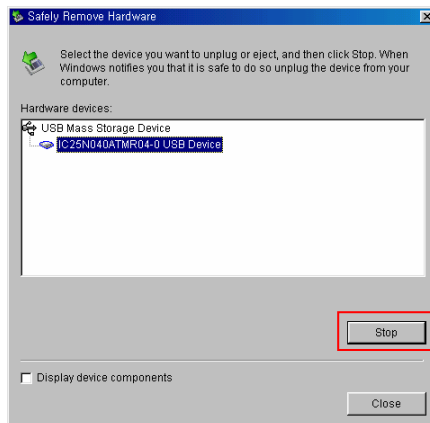


2) Check 'My Computer' or 'Explorer', there should be a new volume. You can copy any data to this volume.

✓If a new volume does not appear, make sure the HDD is formatted as FAT32. Windows 98SE only detects FAT32. You may also need to connect the power cable.

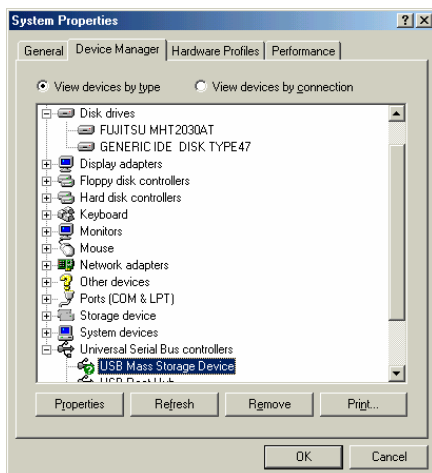



3) After copying your data, remove the AVOX by using the remove icon  at Windows' right-bottom corner. Be sure to do this before removing the AVOX to ensure that it is safe to remove the AVOX.

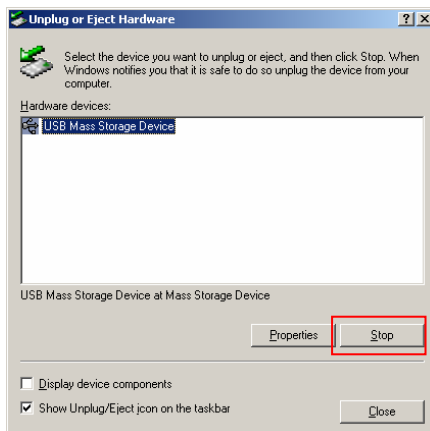


## 1.3.2 Windows ME

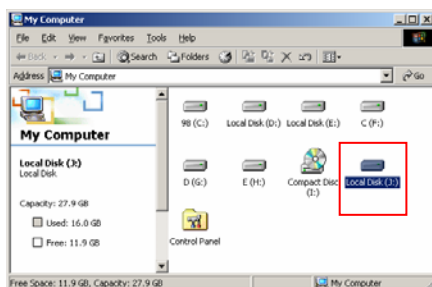
1) After connecting the AVOX, Windows itself will install the driver automatically. Then, check the driver installation at Windows [Start > Settings > Control Panel > (view all Control Panel options) > System > Device Manager > Universal Serial Bus controllers > USB Mass Storage Device]



3) After copying data, remove the AVOX by using the remove icon  at Windows' right-bottom corner. Be sure to do this before removing the AVOX to ensure that it is safe to remove the AVOX.



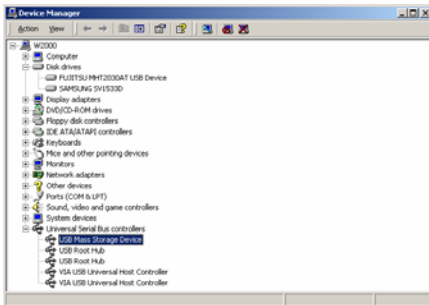
2) Check 'My Computer' or 'Explorer', there should be a new volume. You can copy any data to this volume.




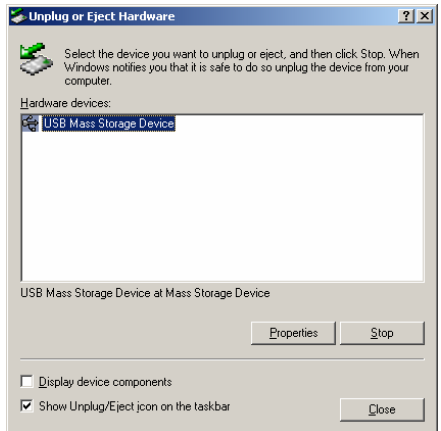
✓ If a new volume does not appear, make sure the HDD is formatted as FAT32. Windows ME only detects FAT32. You may also need to connect the power cable.

### 1.3.3 Windows 2000, XP

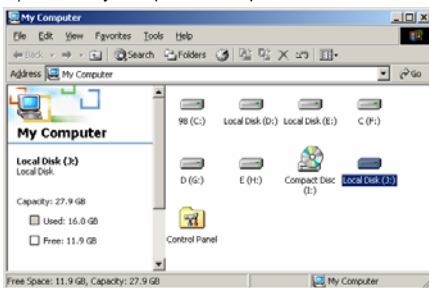
1) After connecting the AVOX, Windows will automatically install its own driver. And then, check the driver installation at Windows [Start > Settings > Control panel > (switch to classic View on Windows XP) > system > Hardware > Device manager > Universal Serial Bus controllers > USB Mass Storage Device ].



3) After copying data, remove the AVOX by using the remove icon  at Windows' right-bottom corner. Be sure to do this before removing the AVOX to ensure that it is safe to remove the AVOX.



2) Check 'My Computer' or 'Explorer', there should be



✓If a new volume does not appear, check if the HDD is formatted as FAT32 or NTFS. Windows XP/2000 only works with FAT, FAT32 and NTFS. You may also need to connect the power cable of the AVOX.

✓If you only have USB 1.1, you may see 'High-Speed USB Device connected to non High-Speed USB Hub.' The unit will still operate correctly, though at a reduced speed. You will need a USB 2.0 adaptor or port to operate it at full speed.



## 1.3.4 Linux

✓The AVOX will work with Linux 2.4 higher.

### [Automatic Mount]

After booting, do log-in.

Connect the AVOX -> Power On AVOX -> Check the detection with [fdisk] -> make Mount Pointer (ex. mediatest) at Folder Mount(/mnt) -> Edit [/etc/fstab] -> add the following;

/dev/sda /mnt/mediatest vfat noauto, user 0 0 (in case of FAT32 HDD)

/dev/sda /mnt/mediatest ntfs noauto, user 0 0 (in case of NTFS HDD)

Do Log-in again.

✓above example "sda" is assumed that the AVOX will be detected as "sda" on your system. If not, you have to write the drive name which is detected as "USB Mass Storage", not "sda"

### [Manual Mount]

Connect the AVOX -> Power On AVOX -> Check the detection with [fdisk] -> make Mount Pointer (ex. mediatest) at Folder Mount(/mnt) -> Edit [/etc/fstab] -> add the following;

mount -t vfat /dev/sda /mnt/mediatest (in case of FAT32 HDD)

mount -t ntfs /dev/sda /mnt/mediatest (in case of FAT32 HDD)

✓above example "sda" is assumed that the AVOX will be detected as "sda" on your system. If not, you have to write the drive name which is detected as "USB Mass Storage", not "sda"

### [How to stop using]

Do [umount] at Device Control.

## 1.3.5 Mac

✓The AVOX will work on Mac 9.0 higher.

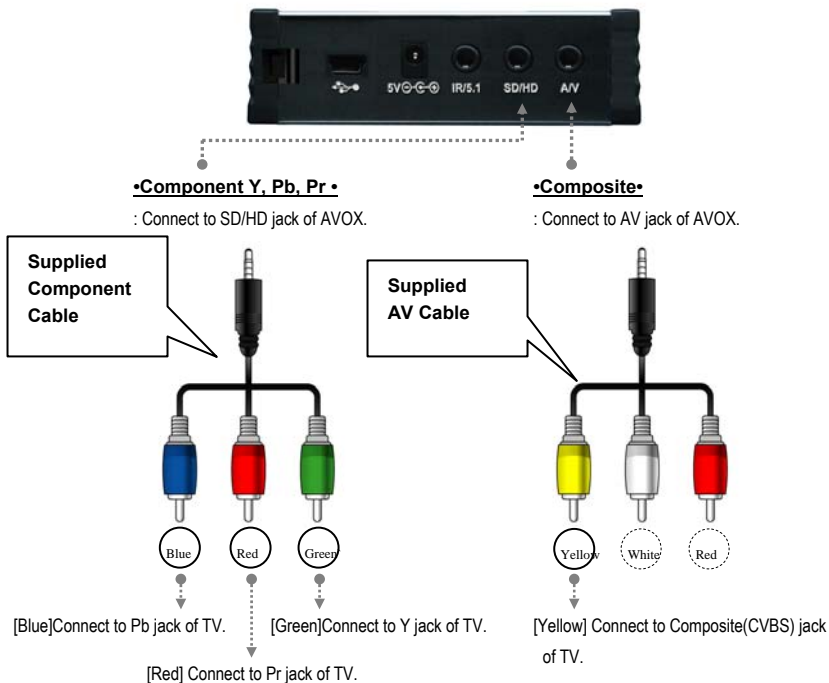
There is no need to install the additional drivers with Mac OS 9.x. The AVOX will be detected automatically. If the AVOX is detected correctly, an icon will appear on the desktop. If not, make sure the disk is not formatted as NTFS. To removing the AVOX safely, drag the icon to a trash and unplug the AVOX.

## 2. Use as Multimedia Player

### 2.1 Connect to External AV Device

#### 2.1.1 Connect Video Cable

The AVOX supports 2 type of video output; "Composite" and "Component". Use the video connection that your TV supports. Most TVs support composite video connection. **Do not connect the USB cable when connected to a TV.**

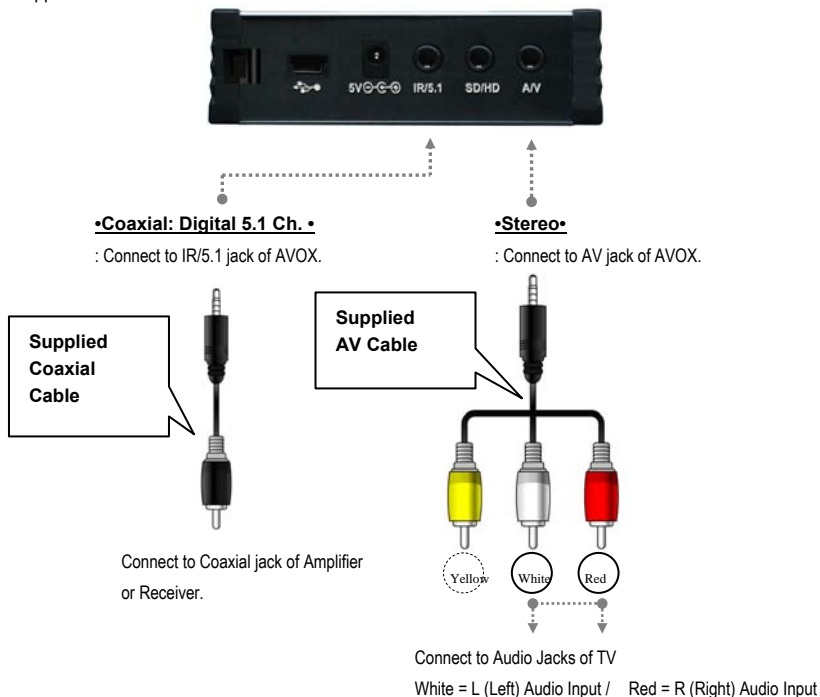


✓ If you cannot see anything after connecting video cable, check followings,

1. "TV" – Switch to Video Input Mode: Turn on TV, and switch to video input mode same as video connection. See TV user manual.
2. "AVOX" – Switch to Video Output Mode: Press [VIDEO] button repeatedly. Whenever press [VIDEO], video output signal is changed.
3. Once you see a normal screen, you must save your video configuration on the AVOX. See "2.2.1 Video Setup".

## 2.1.2 Connect Audio Cable

The AVOX supports 2 type of audio output; "Stereo" and "Coaxial". Use the audio connection that your TV or Audio system supports. **Do not connect the USB cable when connected to a TV.**



✓If you cannot hear sound after connecting the Coaxial Cable, you have to change the audio setup of the AVOX to Encoded Digital. See "2.2.2 Audio Setup"

## 2.1.3 Connect External IR Receiver

External IR Receiver is an optional package and is not included with the primary AVOX package.

Connect the external IR receiver to IR/5.1 jack of the AVOX instead of Coaxial cable. External IR Receiver and Coaxial cable are not used at the same time.

## 2.2 Basic Setup

### 2.2.1 Video Setup

This is guide for setting video output of the AVOX. You have to setup the AVOX's video output mode same as TV set's video input mode.

✓ If you cannot see anything after connecting video cable, check followings,

1. "TV" – "TV" – Switch to Video Input Mode: Turn on TV, and switch to video input mode same as video connection. See TV user manual.
2. "AVOX" – Switch to Video Output Mode: Press [VIDEO] button repeatedly. Whenever press [VIDEO], video output signal is changed.
3. Once you see a normal screen, you must save your video configuration on the AVOX. See "2.2.1 Video Setup"..

TV Video Input Mode	AVOX Video Output Mode	Connection Jack of TV, AVOX	Video Cable Type
Normal Video	TV Out: NTSC C/S-Video (HD Component OFF)	CVBS or Composite Jack (Generally Yellow Jack)	Supplied AV Cable
	TV Out: PAL C/S-Video (HD Component OFF)		
S-Video	Not supported	-	-
	Not supported		
Component 480i	TV Out: NTSC C/YPbPr (HD Component OFF)	Component 3 Jack  * Y(Green), Pb(Blue), Pr(Red)	Supplied Component Cable  * Y(Green), Pb(Blue), Pr(Red)
	TV Out: PAL C/YPbPr (HD Component OFF)		
Component 480p	HD Component Out On 480p		
Component 720p	HD Component Out On 720p		
Component 1080i	HD Component Out On 1080i		
✔NTSC, PAL : Standard of TV Output. Select a proper one for using in your country.			

## < Setup Procedure >



① Turn on the AVOX and press [SETUP] on MediaType Selection screen.

② Move to 'Video Setup' icon and press [ENTER].

③ Move to Video Output Mode that you want and press [ENTER].

④ Finally, press [SETUP] again for saving configurations.



Example of component video output settings.

## 2.2.2 Audio Setup

This is guide for setting up the audio output the AVOX. You can use Stereo or Digital 5.1 ch..

- ✓Analogue/DCPM: Select when you connect the supplied AV cables (Red / White) to TV or Audio set directly.
- ✓Encoded Digital: Select when you want to listen through 5.1Ch by connecting receiver (or amplifier) with supplied coaxial cable.

### <Setup Procedure>



① Turn on the AVOX and press [SETUP] in MediaType Selection screen.

② Move to 'Audio Setup' icon and press [ENTER].

③ Move to Audio Output Mode that you want and press [ENTER].

④ Finally, press [SETUP] again for saving configurations.

## 2.2.3 Other Setup

This is guide for setting TV Type, JPEG File Preview, Language Selection. In addition, current firmware version shows.

### <Setup Procedure>



① Turn on the AVOS and press [SETUP] in Media Type Selection Screen.

▢ Move to 'Other Setup' icon and press [ENTER].

▢ Move to settings that you want and press [ENTER].

▢ Finally, press [SETUP] again for saving configurations.

### 2.2.3.1 TV Type Setup

Select one among 4:3 Letter Box, 4:3 Pan Scan, or 16:9.

### 2.2.3.2 Jpeg File Preview Setup

It is possible to enable or disable preview the photo file as a thumbnail image before playing.

### 2.2.3.3 Language Selection Setup

Select one language among English, German, Spanish, French, Italian, Portuguese, Danish, Swedish, or Dutch. User interface language will be changed according to the language.

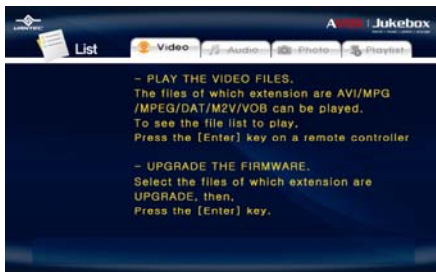
### 2.2.3.4 Check Firmware Version

Current Firmware version will be displayed on the Other Setup screen.

## 2.3 Basic Screen Menu

### 2.3.1 Media Type Selection

After turning on the AVOX, you can see MediaType Selection screen. In this screen, you can select "Video", "Audio", "Photo" or make "Play-List" with the arrow button. Press [ENTER]. Select one media type that you want to play.



### 2.3.2 File Selection

After selecting a Media type, 'File Selection' screen will be displayed. Move to a file that you want to play and press [ENTER] or [PLAY/PAUSE].



- ☞ **[ENTER] button** Play one file that you select. After finishing playback, return to 'file selection screen'.
- ☞ **[PLAY/PAUSE] button** After playing the file that you select, play next all files continuously.
- ☞ **▲ ▼ button** Move to files with pressing ▲ ▼ arrow buttons.
- ☞ **⏮ button** Move to left icon with pressing ⏮ arrow button. Press ⏭ button in order to return to file selection screen.
- ☞ **NEXT<I, PREV I> button** Move to Next or Previous page when there is too many files to list on one screen.

#### ☞ Left Icon Descriptions

Play All	After the file that you select, play next all files continuously. It is same as [PLAY/PAUSE] button.
Media Select	Go to Media Type Selection directly.



## 2.4 Play Video Files

It is possible to play video files like AVI, MPG, MPEG, DAT, M2V, and VOB.  
Select 'Video' icon in Media Type Selection screen. Video file list will be displayed. Just move to a file and press [ENTER] or [PLAY/PAUSE] button.



Select 'Video' icon in Media Type Selection screen.

Move to a file and press [ENTER] or [PLAY/PAUSE] button. Press [ENTER] for playing just the file or [PLAY/PAUSE] for playing all files from the selected file.



### < Function and Button Descriptions>

Remote Control	Function	Descriptions
AUDIO	Dual Audio	It is possible to switch each audio language when the audio format is dual-audio, for example, including a local language and English.
SUBTITLE	Subtitle Move& Size	It is possible to change subtitle size and location. ◀▶ button changes size and ▼▲ arrow button changes location. After doing, press [ENTER].
	Subtitle Select or Hide	The subtitle name same as video file is displayed on screen automatically. However, it is possible to open the other preferable subtitle files or hide.

	<b>Subtitle Language Select</b>	It is possible to switch each subtitle language when the subtitle is dual language format, for example, including a local language and English. * When selecting 'Discriminating subtitle language', first subtitle language will be displayed.
	<b>Subtitle Sync.</b>	It is possible to set the subtitle sync. with ◀▶ (one second) ▼▲ (60 second) when motion and subtitle sync is not matched.
<b>4, 5, 6 Number Button</b>	<b>Subtitle Color Change</b>	Subtitle color is changed when pressing number 4, 6 button. In order to return default color (white), press number 5.
<b>Scr. SIZE</b>	<b>Zoom Vertical</b>	Zoom screen vertically.
	<b>Zoom Full</b>	Enlarge the overall screen.
	<b>Custom</b>	Enlarge or reduce the screen by ▲▼ ◀▶ arrow buttons.
	<b>Default</b>	Return to original screen size and position.
	<b>Screen Position</b>	Move the screen to the direction with ▼▲ ◀▶ arrow buttons. Press [Brt.Cont] key for returning to the original screen position when applying Screen position.
<b>TIME SEARCH</b>	<b>Jump to Preferable Playback Time</b>	Move to a selected time of a file.
<b>CANCEL</b>	<b>Delete Input Numbers</b>	In time search box, this button deletes all numbers in 0.
<b>Brt. CONT</b>	<b>Control luminosity, color depth, brightness</b>	When pressing this button, 3 modes switch. After selecting a mode, change settings with ◀▶ arrow buttons.
<b>FILE INFO</b>	<b>Show File Information</b>	Show the file information which is being played. In order to hide the information, press this button again.
<b>FF</b> [ ]	<b>Fast Forward</b>	Whenever pressing this button, play speed is changed with 8x, 16x, 32x in forward.
[ ] <b>arrow button</b>		
<b>REW</b> [ ]	<b>Rewind</b>	Whenever pressing this button, play speed is changed with 8x, 16x, 32x in backward.
[ ] <b>arrow button</b>		
<b>VOLUME +</b>	<b>Volume Up</b>	Volume up.
<b>▲ arrow button</b>		
<b>VOLUME -</b>	<b>Volume Down</b>	Volume down.
<b>▼ arrow button</b>		
<b>MUTE</b>	<b>Sound Off</b>	Mute the sound. In order to hear sound, press this button again.
<b>ENTER</b>	<b>Playback a File</b>	Play a file. After finishing playback, return to file selections screen.

<b>PLAY / PAUSE</b> ⏮	<b>Playback</b> <b>Next All Files</b>	After the file that you select, play next all files continuously. It is same as [PLAY/PAUSE] button.
<b>PLAY / PAUSE</b> ⏮	<b>Pause</b>	Pause playback, if pressing this button when a file is being played. In order to play again, press this button again.
<b>PREV</b> ⏮	<b>Playback</b> <b>Previous File</b>	Play a previous file before a current playback file. If you used [ENTER] for playback, you can not use this function. This is available in playing all files as using [PLAY/PAUSE] button or 'Play All' icon.
<b>NEXT</b> ⏭	<b>Playback</b> <b>Next File</b>	Play a next file after a current playback file. If you used [ENTER] for playback, you can not use this function. This is available in playing all files as using [PLAY/PAUSE] button or 'Play All' icon.
<b>0</b> <b>Number button</b>	<b>Screen Reset</b>	If a frame of a video file is broken, green color runs on a overall screen. Press number [0 "Zero"] for screen reset.

## 2.5 Play DVD Files

DVD manager function supports playing a ripped DVD file the same as an original DVD.

Make a folder and then save all ripped files into the folder. After connecting to a TV(or Monitor), select VIDEO\_TS.IFO file at the folder. Make sure that all the ripped files including VIDEO\_TS.IFO from one DVD title will be located at one folder.

✓If you cannot find VIDEO\_TS.IFO file among all the ripping files from an original DVD title, the DVD manager function will not work.



Select 'Video' icon in Media Type Selection screen.

Move to the folder including DVD ripping files and select 'video\_ts.ifo' file and press [ENTER] button.



### < Function and Button Descriptions >

Remote Control	Function	Description
<b>AUDIO</b>	Select Audio Type	Audio type will be changed whenever pressing this button.
<b>SUBTITLE</b>	Select Subtitle Type	Subtitle type will be changed whenever pressing this button.
<b>Scr. SIZE</b>	Screen Size	Screen size will be changed when press the button.
<b>MENU</b>	Go to Menu	Move to main menu while playing DVD.
<b>SLOW</b>	Playback Slow	Play slowly 1/2x, 1/4x, and 1/8x whenever pressing this button.
<b>REPEAT</b>	Chapter, Title Repeat	Set chapter, title repeat.

<b>A-B REPEAT</b>	A-B repeat	Set the A-B repeat.
<b>TITLE</b>	Go to Title Menu	Move to title menu while playing DVD.
<b>ANGLE</b>	Angle	Apply angle function.
<b>FILE INFO</b>	Show File Information	Show the file information which is being played. In order to hide the information, press this button again.
<b>TIME SEARCH</b>	Jump to Preferable Playback Time	Move to a selected time of a file.
<b>CANCEL</b>	Delete Input Numbers	In time search box, this button deletes all numbers in 0.
<b>Brt. CONT</b>	Control luminosity, color depth, brightness	When pressing this button, 3 modes switch. After selecting a mode, change settings with ◀▶ arrow buttons.
<b>PREV</b> ⏮	Playback Previous Chapter	Play a previous chapter.
<b>NEXT</b> ⏭	Playback Next Chapter	Play a next chapter.
<b>FF</b> ⏩	Fast Forward	Whenever pressing this button, play speed is changed with 8x, 16x, 32x, 48x in forward.
<b>REW</b> ⏮	Rewind	Whenever pressing this button, play speed is changed with 8x, 16x, 32x, 48x in backward.
<b>ENTER</b>	Playback	Play 'Video_ts.ifo' file.
<b>PLAY / PAUSE</b> ⏸	Pause	Pause playback, if pressing this button when a file is being played. In order to play again, press this button again.
<b>VOLUME +</b>	Volume Up	Volume up.
<b>VOLUME -</b>	Volume Down	Volume down.
<b>MUTE</b>	Sound Off	Mute the sound. In order to hear sound, press this button again.

## 2.6 Play Music Files

It is possible to play music files like MP3, OGG, WAV, WMA.

Select Audio icon in Media Type Selection screen. Music file list will be displayed. Just move to a file and press [ENTER] or [PLAY/PAUSE] button.



Select 'Audio' icon in Media Type Selection screen.



Move to a file and press [ENTER] or [PLAY/PAUSE] button. Press [ENTER] for playing just the file or [PLAY/PAUSE] for playing all files from the selected file.



### < Function and Button Descriptions >

Remote Control	Function	Description
FILE INFO	Show File Information	Show the file information which is being played. In order to hide the information, press this button again.
TIME SEARCH	Jump to Preferable Playback Time	Move to a selected time of a file.
CANCEL	Delete Input Numbers	In time search box, this button deletes all numbers in 0.
Brt. CONT	Control luminosity, color depth, brightness	When pressing this button, 3 modes switch. After selecting a mode, change settings with ◀ ▶ arrow buttons.
PREV ⏮	Playback Previous File	Play a previous file before a current playback file. If you used [ENTER] for playback, you can not use this function. This is available in playing all files as using [PLAY/PAUSE] button or 'Play All' icon.

<b>NEXT</b> ⏮	Playback Next File	Play a next file after a current playback file. If you used [ENTER] for playback, you can not use this function. This is available in playing all files as using [PLAY/PAUSE] button or 'Play All' icon.
<b>FF</b> ⏮	Go to 10 Sec. in Forward	Go to 10 sec. in forward and play when a file is being played.
<b>REW</b> ⏮	Go to 10 Sec. in Backward	Go to 10 sec. in backward and play when a file is being played.
<b>ENTER</b>	Playback a File	Play a file. After finishing playback, return to file selections screen.
<b>PLAY / PAUSE</b> ⏮	Playback Next All Files	After the file that you select, play next all files continuously. It is same as [PLAY/PAUSE] button.
<b>PLAY / PAUSE</b> ⏮	Pause	Pause playback, if pressing this button when a file is being played. In order to play again, press this button again.
<b>VOLUME +</b>	Volume Up	Volume up.
<b>VOLUME -</b>	Volume Down	Volume down.
<b>MUTE</b>	Sound Off	Mute the sound. In order to hear sound, press this button again.
<b>SUBTITLE</b>	Hide Mp3 Subtitle	It is possible to show mp3 subtitle which the mp3 file supports subtitle. In that case, this button will hide the subtitle.  * mp3 subtitle supported file must be made by iriver caption editor program, not support LDB program.

#### ✓How to Play MP3 without TV set. MP3 Quick Play

Make a 'music' folder (in small letters not capital letters) at root directory of HDD and save MP3 files in the folder. If the HDD is divided into two or more partitions, make a 'music' folder at first partition.

Turn on the AVOX and just press [PLAY/PAUSE] button. MP3 files at 'music' folder will be played automatically. Additionally, after rebooting the AVOX, the last played file will be continued playing.

#### ✓How to See MP3 Subtitle

It is possible to show MP3 subtitles when the MP3 file supports subtitles. A MP3 subtitle supported file must be made by 'iriver caption editor' program.

## 2.7 Play Photo Files

It is possible to play photo files like JPG(JPEG).

Select Photo icon in Media Type Selection screen. Photo file list will be displayed. Just move to a file and press [ENTER] or [PLAY/PAUSE] button.



Select Picture icon in Media Type Selection screen.



Move to a file and press [ENTER] or [PLAY/PAUSE] button. Press [ENTER] for playing just the file or [PLAY/PAUSE] for playing all files from the selected file.



### < Function and Button Descriptions >

Remote Control	Function	Description
FILE INFO	Show File Information	Show the file information which is being played. In order to hide the information, press this button again.
PREV ⏮	Playback Previous File	Play a previous file before a current playback file. If you used [ENTER] for playback, you can not use this function. This is available in playing all files as using [PLAY/PAUSE] button or 'Play All' icon.
NEXT ⏭	Playback Next File	Play a next file after a current playback file. If you used [ENTER] for playback, you can not use this function. This is available in playing all files as using [PLAY/PAUSE] button or 'Play All' icon.
ENTER	Playback a File	Play a file. After finishing playback, return to file selections screen.



<b>PLAY / PAUSE</b> ⏮	Playback Next All Files	After the file that you select, play next all files continuously. It is same as [PLAY/PAUSE] button.
<b>PLAY / PAUSE</b> ⏮	Pause	Pause playback, if pressing this button when a file is being played. In order to play again, press this button again.
<b>FF</b> ⏭	Zoom In	Enlarge a photo.
<b>REW</b> ⏮	Zoom Out	Reduce a photo.
<b>ANGLE</b>	Rotation	Rotate a photo.
<b>방향키</b> ▲ ▼ ▢	Panning	Move the position of photo.
<b>ENTER</b>	Return to Original Photo	Return to original photo.
<b>Brt. CONT</b>	Control luminosity, color depth, brightness	When pressing this button, 3 modes switch. After selecting a mode, change settings with ▲ ▼ arrow buttons.

#### ✓ Photo Slide Show

If you play all files with 'Play All' icon or [PLAY/PAUSE], photo slide shows will be started.

#### ✓ Music Slide Show

Make a 'music' folder (in small letters not capital letters) at root directory of HDD and save MP3 files at the folder. If the HDD is divided into two or more partitions, make a 'music' folder at first partition.

When you play one or all photo files, you can listen to mp3s and see photo slide show together.

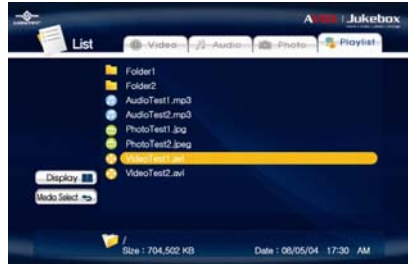
#### ✓Photo Preview On, Off

It is possible to enable or disable preview the photo file as a thumbnail image before playing at Other Setup screen.

## 2.8 Make a Play-List

User can register all media type of files like video, music, and photo to play-list. The registered media files to play-list will be played without discriminating media type.

✓It is not possible to play each registered files independently. Use 'Play All, Random Play' icon or [PLAY/PAUSE] button. Additionally, registered play-list will be deleted after rebooting.



① Select Play List icon in Media Type Selection screen.

② Move to a file and press [ENTER] for adding to Play-List. After adding, press ◀ for moving to Left Icon. Move to 'Display' icon and press [ENTER].



③ Play-List screen appears. You can see just added files. Play as followings,

- Play All icon: play in order from selected file.
- Random Play icon: play in random.
- Play/Pause button: play in order from selected file.

\* In order to move up to Left Icon, press [◀] button.

\* Delete All icon means to delete all the added files.

\* In order to delete a added file, move to a file on Play-List screen and press [ENTER] twice.

\* In order to change location among added files, move to a file which you want to move and press [ENTER] and then move to the other file where you want to add and press [ENTER].

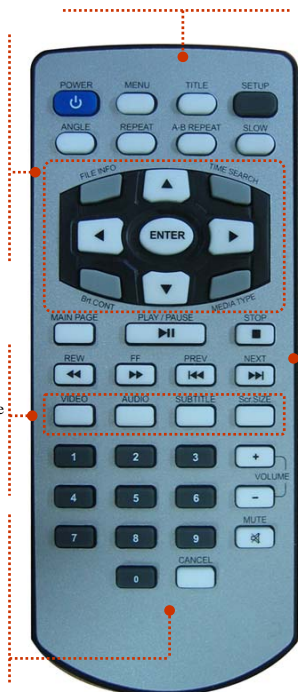
## 2.9 Remote Controls

This is guide for basic use of remote control. For more details, '2.3 Basic Screen Menu', '2.4 Play Video Files', '2.5 Play DVD Files', '2.6 Play Music Files', '2.7 Play Photo Files', '2.8 Make a Play-List'.

<b>POWER</b>	Turn On / Off	<b>SETUP</b>	Go to Setup Screen.
<b>MENU</b>	Go to DVD Main Menu		
<b>TITLE</b>	Go to DVD Title Menu	<b>ANGLE</b>	DVD Angle, Photo Rotation
<b>REPEAT</b>	Set DVD Chapter, Title Repeat	<b>A-B REPEAT</b>	Set DVD A-B Repeat
<b>SLOW</b>	Play DVD Slowly		

<b>ENTER</b>	Play a File
<b>▲▼▶◀</b>	Arrow Key
<b>FILE INFO</b>	Show File Info
<b>TIME SEARCH</b>	Jump to Specific play time
<b>Brt. CONT</b>	Set Luminosity, Color Depth, Brightness
<b>MEDIA TYPE</b>	Go to Media Type Selection Screen

<b>VIDEO</b>	Change Video Output Mode
<b>AUDIO</b>	Change Audio Type of Video, DVD file
<b>SUBTITLE</b>	Subtitle Settings
<b>Scr. SIZE</b>	Screen Size Settings



<b>MAIN PAGE</b>	Go to Media Type Selection Screen.
<b>PLAY/PAUSE</b>	Play next all files Pause
<b>STOP</b>	Stop Play
<b>REW</b>	Play Faster in Backward
<b>FF</b>	Play Faster in Forward
<b>PREV</b>	Go to Previous Page Play Previous File in Play All
<b>NEXT</b>	Go to Next Page Play Next File in Play All

### How to Insert/Change Battery

- ① Pull off the battery tray from remote controller's body completely.
- ② Put the enclosed battery on the tray.
- ③ Insert the tray into remote controller's body completely.



## 2.10 Others

### 2.10.1 Music Slide Show

Make a 'music' folder (in small letters not capital letters) at root directory of HDD and save MP3s files in the folder. If the HDD is divided into two or more partitions, make a 'music' folder at first partition.

When you play one or all photo files, you can listen to mp3s and see photo slide show together.

### 2.10.2 MP3 Quick Play

This is for listening to MP3 files without a TV set.

Make a 'music' folder (in small letters not capital letters) at root directory of HDD and save MP3s files in the folder. If the HDD is divided into two or more partitions, make a 'music' folder at first partition.

Turn on the AVOX and just press [PLAY/PAUSE] button. MP3 files at 'music' folder will be played automatically.

Additionally, after rebooting the AVOX, the last played file will continue playing.

### 2.10.3 Change Background Image

It is possible to change a background image on the AVOX. Save 'mybg.jpg' at root directory of the HDD. Background image will be set to whatever the 'mybg.jpg' image is.

\* Recommend to use 720x480 pixels image.

### 2.10.4 Change OSD Text Color

Press number 1 button before playing a file, OSD text color will be changed in dark or white. When you change background image in dark or white, this function will allow reading the text easily.

### 2.10.5 Firmware Upgrade

You can check for firmware upgrades at the Download section of [www.vantecusa.com](http://www.vantecusa.com).

After connecting to a TV set, move to the upgrade file and press [ENTER]. The upgrade will progress automatically.

After finishing the upgrade, you can check firmware version on Setup screen. Press [SETUP] button.

## Technical Support/Contact Info

### Vantec USA

43951 Boscell Rd

Freemont, CA 94538

Tech Support: 510-668-0368

Website: [www.vantecusa.com](http://www.vantecusa.com)

Email: [support@vantecusa.com](mailto:support@vantecusa.com)