

Quick Start

Riō

S10

For detailed instructions and descriptions please see the User's Guide located on the software CDs.

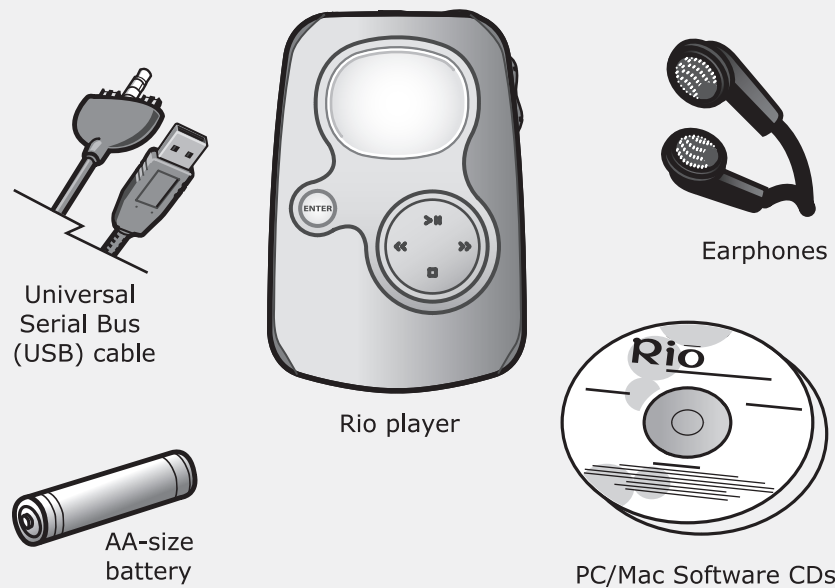
If you want to learn how to use the player before installing, refer to "Using the Player" on the back of this poster.

P/N 41000710-001

Welcome to the Rio S10, your portable solution for MP3/WMA digital audio playback. The S10 comes with 64MB memory built-in, and supports external memory expansion cards. Follow these steps to get started:

1 Unpack

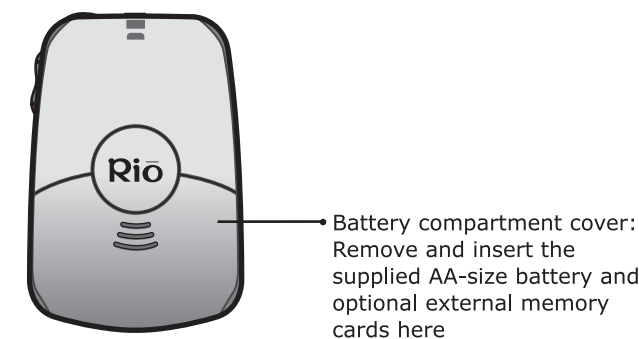
Make sure your package includes the following:



2 Install Battery

- Slide open the battery compartment cover on the back of the Rio player.
- Insert the supplied 1.5 volt AA-size alkaline battery. Ensure the battery is inserted properly by matching the + and - on the battery with the symbols on the Rio player inside the battery compartment.
- Replace the battery compartment cover.

Tip: Insert optional external memory cards into the Rio player while the battery cover is off, before inserting the battery.



3 Install Software

- Insert the appropriate software CD (PC or Mac) label side up into your computer's CD-ROM drive. After a few seconds, the install screen will display.
- Follow the instructions on the screen to install the audio management software. You can also choose to view the User's Guide, get support or register online.
 - Click the "View Manual" link on the software CD install screen to see the User's Guide.
 - To complete online registration, you must have an Internet connection.
- Reboot your computer when software installation is complete or if you are prompted to do so.

PC ONLY: If the install screen does not display automatically, follow these steps to start the installation manually:

- Click the Start button in bottom left corner of the computer screen and choose Run...
- Type d:\install.exe in the field labeled Open. If your computer's CD-ROM drive uses a letter other than "d", substitute that letter for "d".
- Click the OK button, and follow the on-screen instructions.



System Requirements

PC

- Microsoft Windows 98, 98 SE, 2000, Me or XP
- 233Mhz Pentium II processor or higher with 64 MB RAM
- USB port
- CD-ROM drive
- Internet connection recommended

Mac

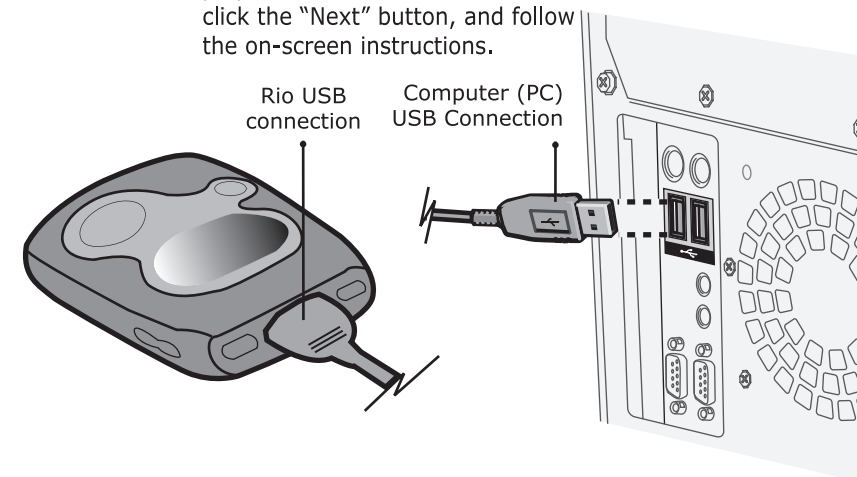
- Mac OS 9.0.4, OS 9.1 or later recommended or OS X, version 10.1 or later recommended
- 32 MB RAM
- Powered USB port
- CD-ROM drive
- Internet connection recommended



For detailed instructions and descriptions please see the User's Guide located on the software CDs

4 Connect USB

- Insert the supplied USB cable into the MULTIFUNCTION port on top of the Rio player. The Rio USB connection only fits one way. Do not try to force the connection.
- Connect the other end of the USB cable to the USB port on your computer.
- Turn the Rio player ON.
- PC ONLY:** Follow these instructions if the Windows Device Driver wizard displays on the computer screen: Make sure that the software CD is in your computer's CD-ROM drive. When the wizard prompts you for the location of the Rio player drivers, select the "CD-ROM Drives" check box, then click the "Next" button, and follow the on-screen instructions.



5 Rip / Load Music

Use the software included on the CDs to take music from your audio CDs and convert it into MP3 or WMA format. (This process is commonly known as ripping and encoding). You can also use the software to get music from the Internet, or download music to your Rio player. For detailed instructions on using the software, please refer to the online help within each application.

Encoding a CD with RealOne (PC)

- Start the RealOne software.
- Put an audio CD in your computer's CD-ROM drive. If the Prompt To Save CD preference is enabled (under Preferences > CD), RealOne displays a dialog box asking if you wish to save the CD. If you select YES, RealOne starts saving (encoding) all tracks on the CD. If this preference is not enabled, continue with Step 3.
- After a few seconds, CD and track information are displayed.
- Click SAVE TRACKS at the bottom of the window. A dialog box displays, from which you can select individual tracks, or select all tracks by clicking the CHECK ALL button. Click OK when you are done.
- RealOne starts saving (encoding) the selected tracks.

Loading music with Rio Music Manager (PC)

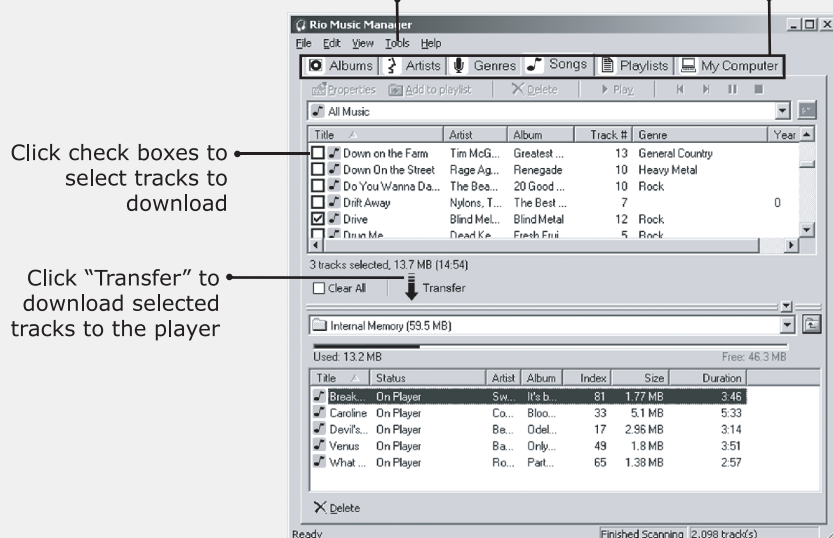
- Start the Rio Music Manager software.
- Make sure that your Rio player is connected to your computer with the USB cable and turned ON.
- Use the tabs located in the top part of the Rio Music Manager software screen to locate music to transfer. Select music by clicking the check box to the left of the artist/album/track title. By default, the software shows the player's internal memory in the bottom part of the screen. You can choose internal or external memory (if an

external memory card is installed) from the drop-down list located in the center part of the Rio Music Manager software screen.

- Click "Transfer" in the center of the software screen to start copying the selected music files to your Rio player.

Select "Format Portable" on the Tools menu to erase all tracks from the player

Use Tabs to search for music



Rio Music Manager software

Note: If you are using Rio Music Manager on a PC running Windows 98 or 98 SE operating systems, you must download and install Windows Media Player if you wish to use the Rio Music Manager playback feature.

Encoding a CD with iTunes (Mac)

- Start the iTunes software.
- Put an audio CD in your Mac's CD-ROM drive.
- After a few seconds, the CD automatically opens in iTunes showing the names of each track.
- Click the check box next to each track you wish to encode. All tracks are selected by default.
- Click the IMPORT button at the top left of the iTunes window. iTunes starts encoding the selected tracks.

Loading music with iTunes (Mac)

- Start the iTunes software.
- Make sure your Rio player is connected to your computer with the USB cable.
- Turn your Rio player ON.
- The Rio player shows up in the iTunes window.
- Click and drag music files from the desktop to the iTunes window. Progress bars display while the music copies.

Optional Accessories

visit our e-store at
store.sonicblue.com