

SAMSUNG



YP-U2

For Your Safety

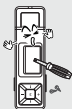
Read this manual carefully to ensure proper use of the product and to avoid any danger or physical damage.



WARNING Failing to heed the product instructions may cause serious injury.

Product Use

Improper use can result in explosion, fire or electric shock.



Do not disassemble, repair or modify this product on your own.



Do not get the product wet or drop it in water.
If the product gets wet, do not switch it on. Contact a Service Center.



Do not place the product in damp, dusty or sooty areas, as it could result in fire or electric shock.



Do not leave the product in areas above 35°C(95°F) (such as a sauna or inside a parked car).
During the summer the temperature inside a car may rise up to 80°C(176°F).

To avoid your hearing damage

Using the earphone or headphone for an extended time can cause a serious damage to your hearing. If you are exposed to a sound in higher than 85db for an extended time, you will be adversely affected on your hearing. The higher the sound is, the more seriously damaged your hearing is (an ordinary conversation is made in 50 to 60 db and the noise level on the road is approximately 80 db). You are strongly advised to set the volume level to medium (the medium level is usually less than 2/3 of the maximum).

If you feel a ringing in the ear(s), lower the volume or stop using the earphone or headphone.

To avoid a risk of traffic accident

Do not use the earphone while you are driving a bicycle, automobile or motorcycle.
Otherwise it can cause a serious accident and, furthermore, it is prohibited by the law in some areas.
Using the earphone on the way, in particular, on the crosswalk can lead to a serious accident.

For your safety, make sure the earphone cable should not get in the way of your arm or other surrounding objects while you are taking exercise or a walk.



CAUTION Failure to follow all instructions lead to physical injuries or damage to the product.

Product Use

Take care to avoid product malfunction and physical damage.



When wearing the product around your neck, take care not to exert excessive force on the neck string.



Be careful when using it as the USB cover is removed. Sharp metallic USB connection Plug may cause injury.

Management of Important Data



Be sure to backup important data. Please be aware that we claim no responsibility for damage from data loss due to breakdown, repair or other causes.

Avoid malfunction



Do not cause excessive impact on the product by dropping it. Do not place heavy objects on top of the product.



Prevent any foreign particles or dust from entering into the product.



Do not spray water on the product. Never clean the product with chemical substances such as benzene or thinner, as it may cause fire, electric shock or deteriorate the surface.



Do not place the product near magnetic objects, as it may cause a malfunction.

Contents

Safety Precautions	2
Contents	4

Chapter 1. | Preparation

Checking the Product and Accessories	7
Checking the Accessories	7
Components	8
Screen Display Information	10
Button Functions	11
Charging the battery	12
Basic Use	13

Chapter 2. | Importing Music Files

Importing Music Files	18
Transferring Music Files	18
Installing Media Studio	19
Connecting to your PC	21
Adding Files/Folders in Media Studio	22
Adding Files/Folders in Media Studio with Autoscans	24
Transferring Files with Media Studio	26
Using as a Removable Disk	28
Disconnecting from your PC	29

Chapter 3. | Listening to Music/FM Radio

Listening to Music	31
Listening to Music	31
To Play a Playlist	34
User Button Custom Function	36
Listening to FM Radio	39
Listening to FM Radio	39
Searching for Frequencies	40
Setting a Frequency	41
To Delete Presets	44
Setting FM Radio	45
Recording	47
Voice Recording	47

Chapter 4. Settings

Settings	49
Setting Music	49
Setting Time	51
Setting the Display	52
Setting Language	53
Setting the system	54

Chapter 5. Troubleshooting

System Reset	58
Troubleshooting	59

Chapter 6. Appendix

Menu Tree	63
Manual USB Driver Installation	64
Product Specifications	67
License	68
Contact SAMSUNG WORLD WIDE	70

Chapter 1. | Preparation

Checking the Product and Accessories	7
Checking the Accessories	7
Components	8
Screen Display Information	10
Button Functions	11
Charging the battery	12
Basic Use	13

Checking the Accessories

The following diagrams are a guide and may differ slightly from the actual product appearance.



Player



Earphones

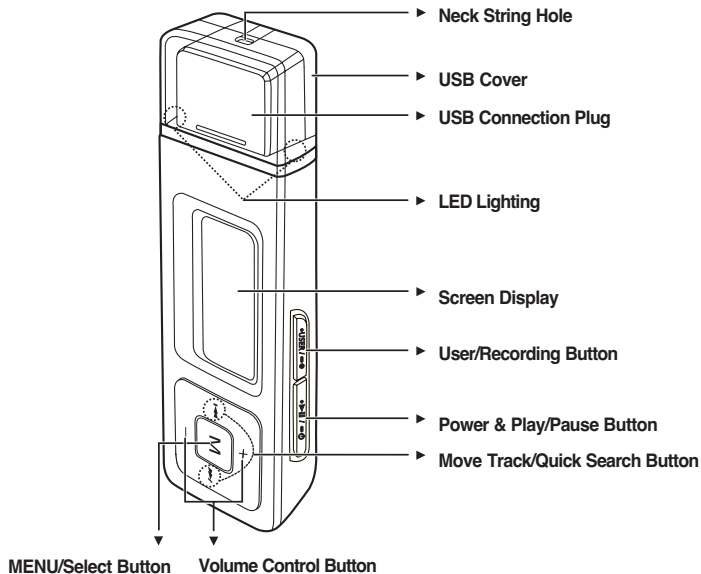


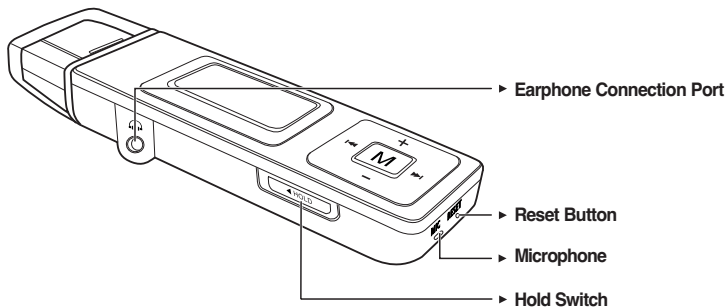
Installation CD

- Design of accessories is subject to change for the purpose of improvement, without notice.

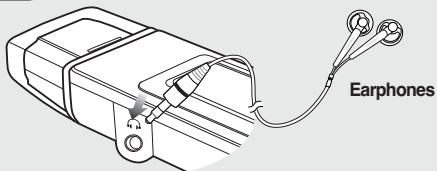
Components

Front, Right Side and Top



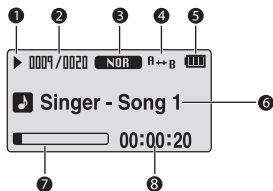
Bottom**Earphone Connection**

▶ Left Side



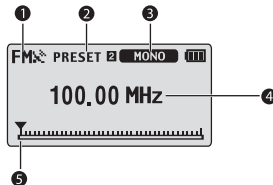
Screen Display Information

Music












- 1 Play/Pause/Stop indicator
- 2 Current Music Number/
Total Number indicator
- 3 Sound Mode indicator
- 4 Repeat Play indicator
- 5 Battery indicator
- 6 Music Title indicator
- 7 Play Status Bar
- 8 Play Time indicator

FM Radio



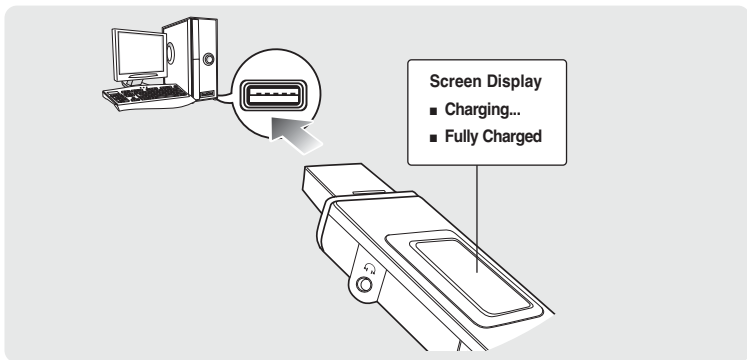
- 1 FM Reception Indicator
- 2 Channel Number Indicator
- 3 Mono/Stereo & MUTE Indicator
- 4 Frequency Indicator
- 5 Frequency Location Indicator


Button Functions

Buttons	Functions and Use
	<ul style="list-style-type: none"> ■ Long press for power on & off. ■ Short press for play/pause.
	<ul style="list-style-type: none"> ■ Long press to start voice recording. ■ Short press to use user setting functions – Repeat AB/DNSe /Play Speed/Play Mode
	<ul style="list-style-type: none"> ■ Long press to move to the menu screen. ■ Short press to move to the navigation list.
	<ul style="list-style-type: none"> ■ Long press to quickly scan tracks. ■ Short press to move to the previous track or play the current track from the beginning.
	<ul style="list-style-type: none"> ■ Long press to quickly scan tracks. ■ Short press to move to next track.
	<ul style="list-style-type: none"> ■ Short press to increase the volume or move to an upper item/menu.
	<ul style="list-style-type: none"> ■ Short press to reduce the volume or move to a lower item/menu.
	<ul style="list-style-type: none"> ■ Push in the direction of the arrow to lock the button functions.
	<ul style="list-style-type: none"> ■ Press with a pointed object to reset.

Charging the battery

Fully charge the battery before using the player for the first time or when the it has not been used for a while.



Remove the USB Cover and then connect the USB Connection Plug to the USB port () on your PC.

- It takes about two and a half hours for a full charge although this may vary depending on the PC environment.

Battery Use

- Recharge and store within the temperature range of 5°C~35°C(40°F~95°F).
- Do not overcharge (longer than 12 hours). Excessive charging or discharging may shorten the battery's life.
- Battery life naturally shortens slowly over time as it is a consumable item.
- The USB connection may be unstable if you are using a USB hub. Directly connect to the USB port on your PC.

Basic Use

Turning the Power On & Off



Turning the Power On

Press and hold the [•▶|| / -⊖] button.

- Power is turned on.

Turning the Power Off

Press and hold the [•▶|| / -⊖] button.

- Power is turned off.




NOTE

- Power is automatically turned off when none of the buttons have been pressed for a preset period of time (Default: 10 seconds) in the pause mode. ▶ Page 51

Playing Music



- 1 Press and hold the [M] button to move to the menu screen.
- 2 Press the [+ , -] button to select <Music> .
- 3 Press the [M] button.
 - Music starts to play.

Basic Use (Continued)

Volume Control



Press the [+ , -] button on the front of the player.

- The Volume Status Bar will appear.
- Press the [+] button to increase the volume or the [-] button to decrease it.

Lock Function




In Hold mode, all buttons are disabled. This function is useful when you are walking or jogging.

- 1** Push the [HOLD] switch on the player in the direction of the arrow.
- 2** Push the [HOLD] switch in the opposite direction of the arrow to release the Lock function.

Searching for Files with <Navigation>

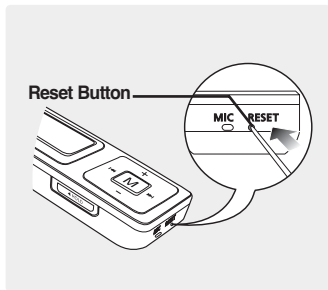
Search easily for files using the <Navigation> function.



- 1 Press and hold the **[M]** button to move to the menu screen.
- 2 Press the **[+ , -]** button to select <Navigation> .
- 3 Press the **[M]** button.
 - The <Navigation> folder list will appear.
- 4 Press the **[+ , -]** button to select a folder of your choice.
- 5 Use the **[>>>]** button to move to the file list in the selected folder.
 - Use the **[>>>]** button to move to the lower step, the **[<<<]** button to the upper step.
- 6 Press the **[+ , -]** button to select a file of your choice.
- 7 Press the **[M]** button.
 - The selected file will start playing.

Basic Use (Continued)

Reset Function



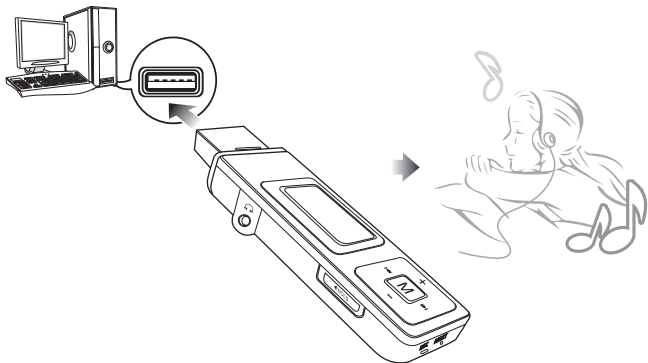
If a product malfunction occurs, you can re-initialize the system by pressing the Reset button. ► P58

Chapter 2. | Importing Music Files

Importing Music Files	18
Transferring Music Files	18
Installing Media Studio	19
Connecting to your PC	21
Adding Files/Folders in Media Studio	22
Adding Files/Folders in Media Studio with Autoscans	24
Transferring Files with Media Studio	26
Using as a Removable Disk	28
Disconnecting from your PC	29

Transferring Music Files

To play music files in the player, first transfer music files in MP3, WMA, Audio ASF, Ogg and other supported formats from your PC.



Follow the steps below to transfer files.

Transferring Music Files

- Transfer files on your PC to the player using Media Studio ► Page 26
- Transfer files on your PC to the player using the “Copy” and “Paste” functions (removable disk) ► Page 28

Installing Media Studio

Use Media Studio to transfer music files from your PC to the player.



If Media Studio is not installed automatically

CAUTION

- Install the program on PCs running Windows 2000 or Windows XP after logging on with the Administrator account. Please refer to the PC user manual on how to log on with the Administrator account.

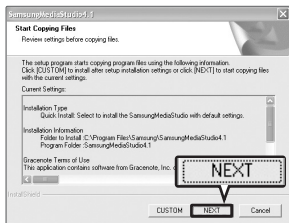
Before you start!

Insert the installation CD provided with the player into the CD-ROM drive.

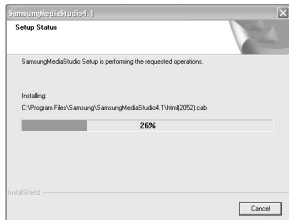


1 Click <Install now>.

Installing Media Studio (Continued)

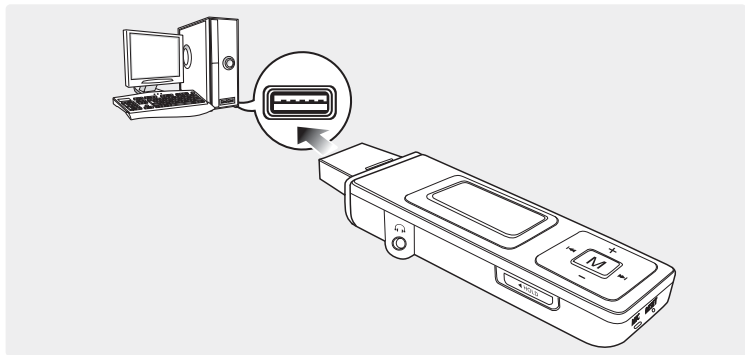


- 2** Click <NEXT>.
- Media Studio installation starts.



- 3** After installation is complete, click <Exit>.
- An icon is created on the desktop after installation is complete and Media Studio starts.
 - If the Autoscan Confirm window appears, refer to page 25 and customize settings.

Connecting to your PC



Remove the USB Cover then connect the USB Connection Plug to the USB port () on your PC.

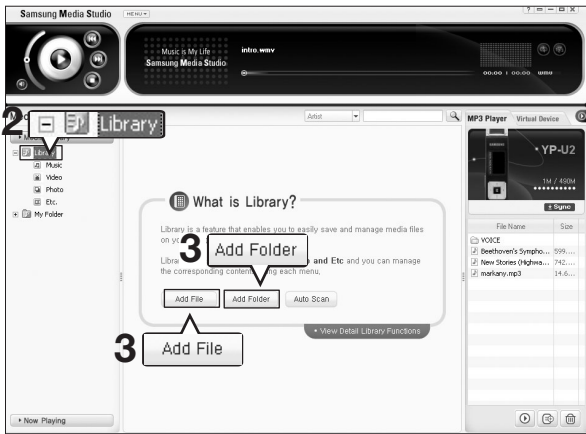
- All functions are disabled during connection.

PC Requirements

For use in conjunction with a PC, the following is required:

- Pentium 300MHz or higher
- Windows 98SE/ME/2000/XP
- 100MB of free hard disc space
- CD Rom Drive (2X or higher)
- USB Port 2.0
- DirectX 9.0 or higher

Adding Files/Folders in Media Studio



Please refer to Help for more information on how to use Media Studio.

- Click <MENU> → <Help> → <Help> from the menu on the top of the Media Studio program.



NOTE

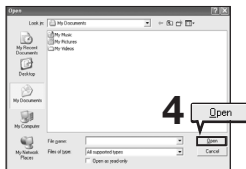
- Files already added to the library will not be added again.

- Before you start!**
- Connect the player to your PC.
 - Media Studio must be installed on your PC.

- 1** Media Studio will automatically start when the player is connected to your PC.
 - If the program does not start automatically, double Click the Media Studio icon on the desktop.
- 2** Click the <Media Library> → <Library> tab on the left of the Media Studio window.
 - The <Add File>/<Add Folder>/<Auto Scan> taps will appear.

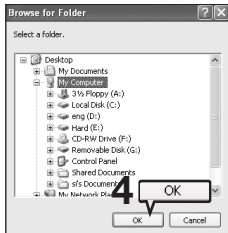
To add files

- 3** Click <Add File>.
 - The Open window will appear.
- 4** Select the files to add and click <Open>.
 - The selected files are added to the list.

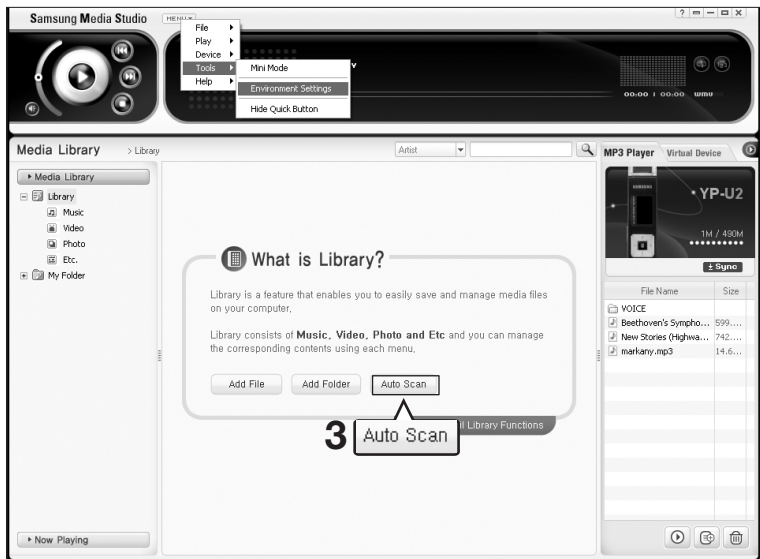


To add folders

- 3** Click <Add Folder>.
 - The Browse folder is window will appear.
- 4** Select the folder to add and click <OK>.
 - The selected folder is added to the list.



Adding Files/Folders in Media Studio with Autoscans



Before you start!

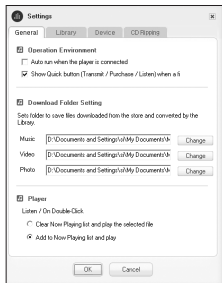
- Connect the player to your PC.
- Media Studio must be installed on your PC.

- 1** Media Studio will automatically start when the player is connected to your PC.
 - If the program does not start automatically, double Click the Media Studio icon on the desktop.
- 2** Click the <Media Library> → <Library> tab on the left of the Media Studio window.
 - The <Add File>/<Add Folder>/<Auto Scan> taps will appear.
- 3** Click <Auto Scan>.
 - The Autoscan window will appear.
- 4** Click <OK>.
 - Automatically scans files and adds them to the library.
 - The first time you use Media Studio, the Autoscan Confirm window and Options window appear accordingly. Set the options, then click <OK> to start Autoscan.

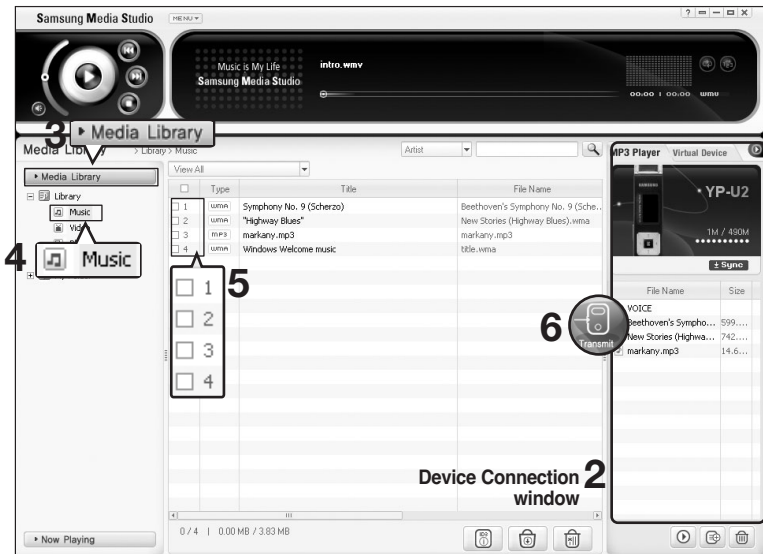
**How to setup Autoscan Options**

Click <MENU> → <Tools> → <Environment Settings> from the top of the Media Studio Window and then click the <Library> tab.

- Select the range and file type to autoscan.



Transferring Files with Media Studio



NOTE

- Music recognition technology and related data are provided by Gracenote and Gracenote CDDB® Music Recognition ServiceSM.
- CDDB is a registered trademark of Gracenote. The Gracenote logo and logotype, the Gracenote CDDB logo and logotype, and the "Powered by Gracenote CDDB" logo are trademarks of Gracenote. Music Recognition Service and MRS are service marks of Gracenote.

Before you start!

- Connect the player to your PC.
- Media Studio must be installed on your PC.

- 1** Media Studio will automatically start when the player is connected to your PC.
 - If the program does not start automatically, double click the Media Studio icon on the desktop.
- 2** Double Click a folder of your choice from the Device Connection window on the right of the Media Studio window.
 - Files in the folder will be displayed.
- 3** Click the <Media Library> tab on the left of the Media Studio window.
- 4** Click <Music>.
 - A file list will appear in the window in the center.
- 5** Click the checkbox in the list in the center window to select the music files to transfer.
 - The Transmit icon will appear.
- 6** Click <Transmit>.
 - The selected files are transferred to the player.



CAUTION

- Do not disconnect the USB Connection Plug during file transfer. This may cause damage to the player or your PC.



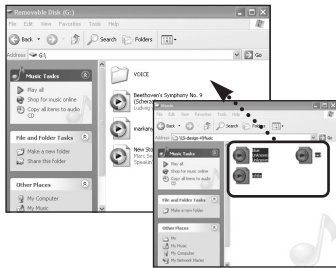
NOTE

- Files on your PC will not be deleted even if files are transferred to the player.

Using as a Removable Disk

You can use the player as a removable storage device.

Before you start! ■ Connect the player to your PC.



1 Open files/folders to transfer from your PC.

2 Open <My Computer> → <Removable Disk> from the desktop.

3 Select the files/folders to transfer from your PC and drag and drop them to a folder of your choice in the <Removable Disk>.

- The selected folders or files are transferred to the player.



CAUTION

- The <USB Transferring> message will appear during file download or upload. Disconnecting the USB Connection Plug while <USB Transferring> is displayed may cause malfunction of the player.
- The order of music files displayed in Windows Explorer may differ from the play order on your device.
- If you move a DRM file(charged file) to the removable disk, the file will not be played.



NOTE

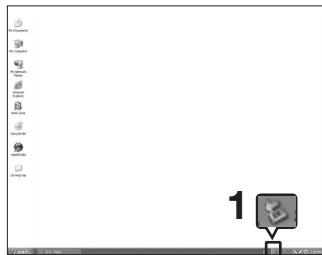
- Select the file to save and drag-and-drop it into the removable disk icon.(In numerical, alphabetical order)
If you change the name of music files in Windows Explorer like 001***, 002***..., music files will be played in the order of number indicated.


■ What is DRM?

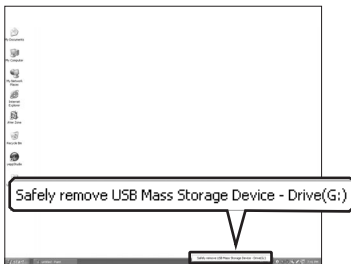
DRM (Digital Rights Management) is a technology and service to prevent the illegal use of digital contents and protect the profit and rights of copyright holders. DRM files are charged music files applied with the illegal copy protection technology of legally purchased MP3 music.

Disconnecting from your PC

Follow the steps below to prevent damage to the player and data when disconnecting from your PC.



- 1 Place the mouse cursor on top of the  icon on the taskbar at the bottom right corner of the desktop and click the left mouse button.



- 2 Click the <Safely Remove USB Mass Storage Device Drive> message.
 - Once you clicked <Safely Remove USB Mass Storage Device Drive>, the player could not be recharged with power even if it is connected to the PC.

- 3 Disconnect the player from your PC.



- Do not disconnect the player from the PC during file transfer. This may cause damage to data and the player.
- You cannot remove the hardware while files within the player are being played on your PC. Please retry after file playback is finished.

Chapter 3 | Listening to Music/FM Radio

Listening to Music	31
Listening to Music.....	31
To Play a Playlist.....	34
Listening to Music	36
Customising Button Functions.....	36
Listening to FM Radio	39
Listening to FM Radio.....	39
Searching for Frequencies.....	40
Setting a Frequency.....	41
To Delete Presets.....	44
Setting FM Radio.....	45
Recording	47
Voice Recording.....	47

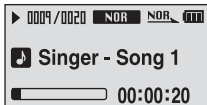
■ **Before you start!**


Transfer the music file of your choice from your PC to the player.

Listening to Music

Before you start!

Connect your earphones to the player and turn the power on and check the battery status.



- 1 Press and hold the **[M]** button to move to the menu screen.
- 2 Press the **[+ , -]** button to select **<Music>** .
- 3 Press the **[M]** button.
 - Music starts to play.



NOTE

- The music files compatible with the player are MP3, WMA, Ogg, Audio ASF
- MP1 or MP2 files which only have a changed extension to MP3, may not play on the player.

To Pause



- 1 Press the **[▶|| / ◀◻]** button while the music is playing.
 - The music playback will be paused.
- 2 Press the **[▶|| / ◀◻]** button again.
 - The music will play from the point where it stopped.



NOTE

- Power is automatically turned off when none of the buttons have been pressed for a preset period of time (Default: 10 seconds) in the pause mode. ▶ Page 51

Listening to Music (Continued)

To search within a track

- 1** Press and hold the [|◀◀] or [▶▶ |] button while the selected track is playing.
 - It searches to the beginning or the end of the track.
- 2** Release the button at the point you wish to start.
 - It starts playing from the point you release the button.

To Play from the beginning of the current track

Press the [|◀◀] button after 5 seconds of play.

- The current track starts playing from the beginning.

To play the previous/next track

Press the [|◀◀] button within 5 seconds of play.

- The previous track will start playing.

Press the [▶▶ |] button.

- The next track will start playing.

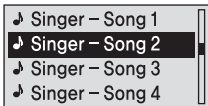


- When playing VBR files, the previous track may not play even if you press the [|◀◀] button within 5 seconds of the play.



- Press the [|◀◀] button within 5 seconds of play to move to the previous track.

To search a music

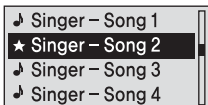


- 1** Press the [**M**] button while the selected music is playing.
 - The file list of the folder will appear.
- 2** Press the [**⏪**] button to move to the upper folder.
- 3** Press the [**+ , -**] button to select a folder of your choice.
- 4** Use the [**▶|**] button to move to the file list on the selected folder.
 - Use the [**▶|**] button to move to the lower level, the [**⏪**] button to the upper level.
- 5** Press the [**+ , -**] button to select a file of your choice.
- 6** Press the [**M**] button.
 - The selected file will start playing.

To Play a Playlist

You can easily listen to your favorite music by adding it to a Playlist.

To make your own Playlist



1 Press the [M] button while a music is playing.

- The file list of the folder will appear.

2 Press the [|◀◀, ▶▶|, +, -,] buttons to add files to the playlist and then press the [●USER/ ●●] button.

- ★ is displayed in front of the selected files and the files are added to the playlist.




NOTE

- To delete files from a Playlist, select the ★ files to delete and press the [●USER/ ●●] button again.
-

To Play a Playlist

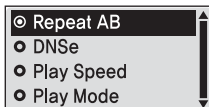


- 1** Press and hold the **[M]** button to move to the Menu screen.
- 2** Press the **[+ , -]** button to select the **<Playlist>**  and then press the **[M]** button.
 - The playlist you set will be displayed.
- 3** Press the **[+ , -]** button to select the list to play and then press the **[M]** button.
 - The files in the playlist will start playing.

User Button Custom Function

Customize the user button with the frequently used function for convenience.

To set User Button Mode



Use the [● USER/ ●●] button during playback for simple mode change.

- 1 Press and hold the [M] button to move to the menu screen.
- 2 Press the [+ , -] button to select <Settings> and then Press the [M] button.
 - The Settings menu will appear.
- 3 Press the [+ , -] button to select the <User Button Mode> and then press the [M] button.
 - The User Button Mode menu will appear.
- 4 Press the [+ , -] button to select the desired user button mode and then press the [M] button.

- <Repeat AB> : Sets section repeat.
- <DNSe> : Selects the sound mode.
- <Play Speed> : Adjusts the playback speed between fast and slow.
- <Play Mode> : Selects the repeat playback mode.

To set Section Repeat



This function enables you to listen to specific parts of a track repeatedly. Recommended for language learning.

- 1 Set the User Button Mode to <Repeat AB> and play a file of your choice.
- 2 Press the [●USER/ ●●] button at the beginning of the section you want to repeat.
 - The starting point is set and <A → > will appear in the screen display window.
- 3 Press the [●USER/ ●●] button again to set the ending of the section you want to repeat.
 - <A → B> will appear on the screen and the specified section starts to play repeatedly.

To cancel Section Repeat

Press the [●USER/ ●●] button again during Section Repeat.

- Section Repeat will be canceled.



NOTE

- Section Repeat will be automatically canceled in the following cases.
 - When the [◀◀] or [▶▶] button is pressed, moving to the previous or next track.
 - The starting point of the section repeat is set but the ending point is not set until the current track ends.

User Button Custom Function (Continued)

To use the DNSe button

Set the User Button Mode to <DNSe> and press the [● USER/ ●●] button.

- DNSe mode changes in the following order each time the button is pressed <NORMAL> <ROCK> <HOUSE> <JAZZ> <DANCE> <BALLAD> <R&B> <CLASSICAL> <USER EQ> <3D USER> <3D STUDIO> <3D STAGE> <3D CLUB>.

To use the Play Speed button

Set the User Button Mode to <Play Speed> and press the [● USER/ ●●] button.

- Playback speed changes in the following order each time the button is pressed <x0.7> <x0.8> <x0.9> <x1.0> <x1.1> <x1.2> <x1.3>.

To use the Play Mode Mode button

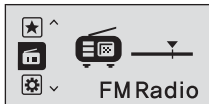
Set the User Button Mode to <Play Mode> and press the [● USER/ ●●] button.

- Playback mode changes in the following order each time the button is pressed <Normal> <Repeat All> <Repeat One> <Shuffle All>.

Listening to FM Radio

Before you start!

- Connect your earphones to the player and turn the power on and check the battery status.



1 Press and hold the [M] button to move to the menu screen.

2 Press the [+ , -] button to select <FM Radio>  and then press the [M] button.

- FM radio reception will start.

To use the mute function

Press the [•▶|| / ◀◊] button while listening to FM radio.

- The MUTE message will appear and no sound is emitted.
- To turn the sound back on, press the [•▶|| / ◀◊] button again.

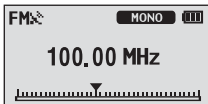
Searching for Frequencies

To automatically search for frequencies



- 1** Press the [**M**] button and select <Manual Mode>.
 - The <PRESET> message will disappear from the screen display and go into manual mode.
- 2** Press and hold the [**◀◀**] or [**▶▶**] button and then release.
 - The frequency nearest from the point the button is released will be searched.

To manually search for frequencies



- 1** Press the [**M**] button and select <Manual Mode>.
 - The <PRESET> message will disappear from the screen display and go into manual mode.
- 2** Press the [**◀◀**] or [**▶▶**] button.
 - Moves to frequencies whenever the button is pressed.

Setting a Frequency

Up to 20 frequencies can be stored.

To automatically set frequencies



- 1 Press and hold the **[M]** button to move to the menu screen.
- 2 Press the **[+ , -]** button to select **<Settings>** and then press the **[M]** button.
 - The Settings menu appears.
- 3 Press the **[+ , -]** button to select the **<FM Radio>** and then press the **[M]** button.
 - The FM Radio menu appears.
- 4 Press the **[+ , -]** button to select the **<Auto Preset>** and then press the **[M]** button.
 - The Auto Preset Confirm window will appear.
- 5 Press the **[+ , -]** button to select the **<Yes>** and then press the **[M]** button.
 - The **<AUTO>** message will appear and frequencies are automatically set between 1~20.

Setting a Frequency (Continued)

To cancel during setting

To cancel setting during <Auto Preset> setting, press the [|◀◀] or [▶▶|] button.

- The auto preset setting is canceled and frequencies set up to then are stored.



NOTE

- To set <Auto Preset> again after setting preset, existing frequencies are deleted entirely and you can reset from start.



CAUTION

- Always connect your earphones to the player when searching or setting frequencies. The earphones are used as antennas to receive FM radio reception.
-

To manually set frequencies



- 1 Press the [**M**] button and select <Manual Mode>.
 - The <PRESET> message will disappear from the screen display and go into manual mode.
- 2 Press the [**◀◀**] or [**▶▶**] button to search for frequencies to set in preset.
- 3 Press the [**●USER/●**] button.
 - The <Save?> message will appear.
- 4 Press the [**◀◀**] or [**▶▶**] button to specify numbers and then press the [**M**] button.
 - The <SAVED!> message will appear and the selected frequency is set to the specified preset number.

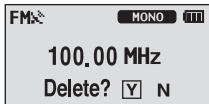
To search for frequencies in PRESET mode



- 1 Press the [**M**] button and select <Preset Mode>.
 - The <PRESET> message will appear on the screen display and go into preset mode.
- 2 Press the [**◀◀**] or [**▶▶**] button.
 - The preset number is selected and you can listen to the stored radio frequency.

To Delete Presets

Before you start! ■ Follow the steps below to delete frequencies while listening to FM radio.



1 Press the [**M**] button and select <Preset Mode>.

- The <PRESET> message will appear on the screen display and go into the preset mode.

2 Press the [◀◀] or [▶▶] button to search for frequencies to delete in preset.

3 Press the [●USER/●] button.

- The <Delete?> message will appear.

4 Press the [◀◀] or [▶▶] button to select <Y> and then press the [**M**] button.

- The <DELETED!!> message will appear and the selected preset number is deleted.
- To cancel preset number delete, select <N>.

Setting FM Radio

To set FM region

- Korea/USA
- Japan
- Other Countries

- 1** Press and hold the **[M]** button to move to the menu screen.
- 2** Press the **[+ , -]** button to select **<Settings>** and then press the **[M]** button.
 - The Settings menu appears.
- 3** Press the **[+ , -]** button to select the **<FM Radio>** and then press the **[M]** button.
 - The FM Radio menu appears.
- 4** Press the **[+ , -]** button to select the **<FM Region>** and then press the **[M]** button.
 - The FM Region menu appears.
- 5** Press the **[+ , -]** button to select the FM region and then press the **[M]** button.
 - You can select from **<Korea/USA>** **<Japan>** **<Other Countries>**.

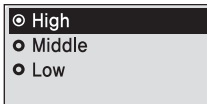


NOTE

- Frequency range by region
 - Korea/USA: Search for FM frequencies in 100 kHz players between 87.5 MHz~108.0 MHz.
 - Japan: Search for FM frequencies in 100 kHz players between 76.0 MHz~108.0 MHz.
 - Other Countries: Search for FM frequencies in 50 kHz players between 87.5 MHz~108.00 MHz.
- FM region can be deleted or changed according to the target region of the player.
- If you change the FM region, the previously stored radio frequencies are removed.

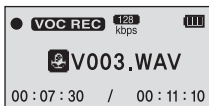
Setting FM Radio (Continued)

To set FM reception



- 1** Press and hold the **[M]** button to move to the menu screen.
- 2** Press the **[+ , -]** button to select **<Settings>** and then press the **[M]** button.
 - The Settings menu appears.
- 3** Press the **[+ , -]** button to select the **<FM Radio>** and then press the **[M]** button.
 - The FM Radio menu appears.
- 4** Press the **[+ , -]** button to select the **<FM Search Level>** and then press the **[M]** button.
 - The FM Search Level menu appears.
- 5** Press the **[+ , -]** button to select the search level and then press the **[M]** button.
 - You can select from **<High>** **<Middle>** and **<Low>**.
 - The higher FM search level is, the more frequencies can be received.

Voice Recording



- 1 Press and hold the [**●USER/●●**] button.
 - Voice recording will start as soon as the file name is displayed

- 2 Press the [**●USER/●●**] button again to end recording.
 - After the confirmation message of recording completion appears, the recording is automatically stored in <VOICE> folder.

File names during recording

Recording files are specified as "VNNN.WAV" during recording.

V means it is a voice-recording file, NNN defines the recording number, and WAV is the file format.

For example, file name V003.WAV is the third voice-recording file to be saved.



NOTE

- To listen to saved recording files, use the Navigation (Search) function. ▶ Page 15.
- FM radio stations cannot be recorded.



CAUTION

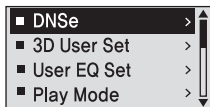
- Do not place the microphone too close or too far away during recording, as this can affect the recording quality.
- Voice recording does not perform properly when the battery is low.

Chapter 4. | Settings

Setting Music.....	49
Setting Time.....	51
Setting the Display	52
Setting Language.....	53
Setting the system.....	54

Setting Music

You can set detailed settings for music playback.



- 1 Press and hold the **[M]** button to move to the menu screen.
- 2 Press the **[+ , -]** button to select **<Settings>** and then press the **[M]** button.
 - The Settings menu appears.
- 3 Press the **[+ , -]** button to select the **<Music>** and then press the **[M]** button.
 - The Music menu appears.
- 4 Use the **[+ , -]** and **[M]** buttons to set necessary functions.



NOTE

- Button functions to use during setting.
 - Press the **[◀◀]** button to move to the previous item.
 - Press the **[▶▶]** button to move to the next item.
 - Press the **[+ , -]** button to move up or down through the current menu.
 - Press the **[M]** button to select or save the menu.
- If there is no button operation during about 30 seconds in the Settings screen, settings will be canceled and returned to through previous function.

Setting Music (Continued)

- **DNSE** : You can select a suitable sound for each music genre. Select either <3D-User> <3D-Studio> <3D-Stage> <3D-Club> <Normal> <Rock> <House> <Jazz> <Dance> <Ballad> <R&B> <Classical> or <User EQ>.
- **3D User Set** : Sets 3D sound effect and bass enhancement. 3D can be set between 00~05 levels, and Bass Enhance between 00~03 levels. To use 3D User Set, select <3D User> from <DNSe>.
- **User EQ Set** : Directly select a sound effect (EQ). To use User EQ, select <User EQ> from <DNSe>.
- **Play Mode** : Select playback mode such as repeat settings. Select from <Normal> <Repeat All> <Repeat One> <Shuffle All> and <Intro>.
- **Play Speed** : Adjust the playback speed of music/voice recording. Select either <x0.7> <x0.8> <x0.9> <x1.0> <x1.1> <x1.2> or <x1.3>. (The higher the number is, the faster the playback speed is.)
- **Skip Interval** : Set the playback interval when you press the [◀◀] or [▶▶] button during playback. Select either <1 Track> <03 Sec> <05 Sec> <07 Sec> <10 Sec> <30 Sec> or <01 Min>.
- **Search Speed** : Set the search speed when you press and hold the [◀◀] or [▶▶] button during playback. Select either <01 Sec> <03 Sec> <05 Sec> <10 Sec> <15 Sec> <20 Sec> <30 Sec> or <01 Min>.
- **Intro Time** : When you select the Intro function from <Play Mode>, the beginning of all files will be played back for the seconds you set. Select either <10 Sec> <20 Sec> <30 Sec> or <60 Sec>.


NOTE

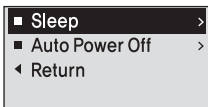
- For a VBR or Ogg file, the Skip Interval and Search Speed may not be exact.

- **What is DNSe?**

DNSe is a sound effect function for MP3 players developed by Samsung and consists of 3D. The 3D adds a stereophonic sound effect to the music.

Setting Time

You can set functions related to the Sleep Timer and Auto Power Off.

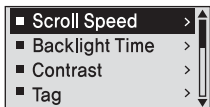


- 1 Press and hold the **[M]** button to move to the menu screen.
- 2 Press the [+ , -] button to select <Settings> and then press the **[M]** button.
 - The Settings menu appears.
- 3 Press the [+ , -] button to select the <Time> and then press the **[M]** button.
 - The Time menu appears.
- 4 Use the [+ , -] and **[M]** buttons to set necessary functions.

- <Sleep> : Turns off power automatically after the preset time. Select either <Off> <15 Min > <30 Min> <60 Min> <90 Min> or <120 Min>.
- <Auto Power Off> : Automatically turns power off when there is no button operation after the preset time in the pause mode. Select either <Off> <05 Sec> <10 Sec> <15 Sec> <30 Sec> <01 Min> or <03 Min>.

Setting the Display

You can set functions related to scrolling, backlight and other screen display.

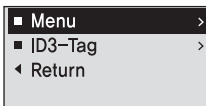


- 1 Press and hold the [M] button to move to the menu screen.
- 2 Press the [+ , -] button to select <Settings> and then press the [M] button.
 - The Settings menu appears.
- 3 Press the [+ , -] button to select the <Display> and then press the [M] button.
 - The Display menu appears.
- 4 Use the [+ , -] and [M] buttons to set necessary functions.

- <Scroll Speed> : Sets the scroll speed to adjust the speed of the track title movement. Select from <Slow> <Normal> and <Fast>.
- <Backlight Time> : Sets to automatically turn off the backlight after there is no button operation during the preset time. Select either <05 Sec> <15 Sec> <30 Sec> <60 Sec> or <Always On>.
- <Contrast> : Adjusts the brightness of the screen display window. Select from 00 to 10.
- <Tag> : View track information for music files with the ID3 Tag. Select either <On> or <Off>.
- <Display Time> : Check the time in the desired format during music playback. Select either <Play Time> <Remain Time> or <Total Time>.
- <LED Effect> : Select LED backlight effect. Select either <Off> <Button> (turns on when a button is pressed) <Random> or <Always on>.

Setting Language

Set the language for the menu and track information (ID3-Tag).



- 1 Press and hold the **[M]** button to move to the menu screen.
- 2 Press the [+ , -] button to select <Settings> and then press the **[M]** button.
 - The Settings menu appears.
- 3 Press the [+ , -] button to select the <Language> and then press the **[M]** button.
 - The Language menu appears.
- 4 Use the [+ , -] and **[M]** buttons to set necessary functions.

- <Menu> : Set the menu language. Select from <Chinese(S)> <Chinese(T)> <Dutch> <English> <French> <German> <Hungarian> <Italian> <Japanese> <Korean> <Polish> <Portuguese> <Russian> <Spanish> and <Swedish>.
- <ID3-Tag> : Set the track information language. Select from <Afrikaans> <Basque> <Catalan> <Chinese(S)> <Chinese(T)> <Czech> <Danish> <Dutch> <English> <Estonian> <Finnish> <French> <German> <Greek> <Hrvatski> <Hungarian> <Icelandic> <Italian> <Japanese> <Korean> <Norwegian> <Polish> <Portuguese> <Romany> <Russian> <Slovak> <Slovene> <Spanish> <Swedish> <Thai> <Turkish> and <Vietnamese>.



NOTE

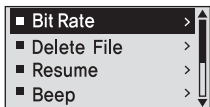
- The supported languages can be changed or added.

■ What is ID3-Tag?

This is what is attached to an MP3 to carry information relevant to the file, such as the title, artist, album, year, genre and a comment field.

Setting the System

You can set the Default Volume, Resume and Beep Sound functions.



- 1** Press and hold the **[M]** button to move to the menu screen.
- 2** Press the **[+ , -]** button to select **<Settings>** and then press the **[M]** button.
 - The Settings menu appears.
- 3** Press the **[+ , -]** button to select the **<System>** and then press the **[M]** button.
 - The System menu appears.
- 4** Use the **[+ , -]** and **[M]** buttons to set necessary functions.

- <Bit Rate> : Selects the recording quality. Select either <32kbps> <64kbps> or <128kbps> (the higher the number is, the larger the file size becomes).
- <Delete File> : Search and delete files in the Navigation screen. ► Page 56
- <Resume> : Specifies the starting point to restart playback after the music you are listening to is stopped. If set to <Off>, the last file listened to will play from the beginning. If set to <On>, the last file listened to will play from the point where last played.
- <Beep> : Sets the beep sound for button operations to on or off. Select either <On> or <Off>.
- <Default Vol> : The default volume can be set 00 to 30(Max). If the power is turned on again after adjusting the volume above the default volume, music is played at default volume. If the power is turned on again after the volume was set within the default volume, the music is played at the previously played volume.
- <Default Set> : Returns all settings to the default value. ► Page 56
- <About> : Checks the firmware version, number of stored files, remaining memory.

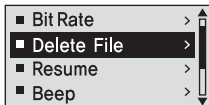


■ Regarding the Built-In Memory

NOTE The actual built-in memory available is slightly less than indicated as the internal firmware uses a portion of the memory.

Setting the system (Continued)

To Delete a File

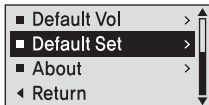


- 1 Press the [**⏪**] button to move to the upper folder.
- 2 Press the [**+, -**] button to select a folder of your choice.
- 3 Use the [**▶▶**] button to move to the file list of selected folder.
 - Use the [**▶▶**] button to move to the lower level, the [**⏪**] button to the upper level.
- 4 Press the [**+, -**] button to select a file to delete and then press the [**M**] button.
- 5 Press the [**+, -**] button to select <Confirm> and then press the [**M**] button.
 - The selected file will be deleted.



- Files cannot be restored after they are deleted. Please check before deleting files.

Default Settings



Press the [**+, -**] button to select either <Yes> or <No> and then press the [**M**] button.

- <Yes> : Initializes all settings to default.
- <No> : Cancels default settings.

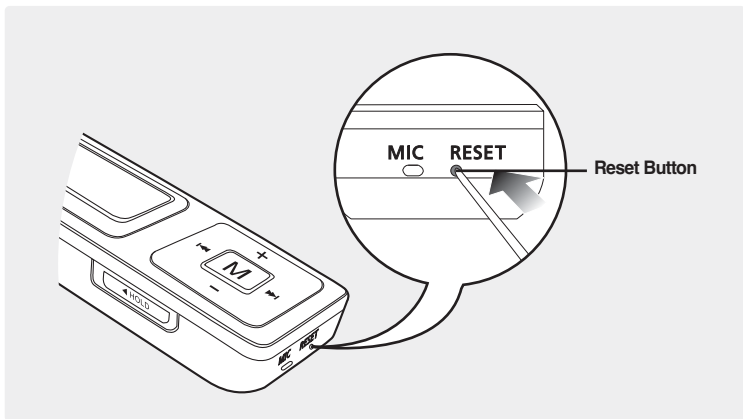


Chapter 5. | Troubleshooting

System Reset.....	58
Troubleshooting.....	59

System Reset

If a product malfunction occurs, you can re-initialize the system by pressing the Reset button.



Press the Reset Button at the bottom of the product with a pointed object such as a safety clip.

- The system will be initialized.
- The Reset function will not delete data stored in the built-in memory.

Troubleshooting

If a malfunction is experienced, check the following.

If the problem persists, contact a Samsung Service Center near you.

Problem	Check points & Troubleshooting
Power will not turn on.	<ul style="list-style-type: none">■ Power will not turn on if the battery is fully discharged. Recharge the battery and turn the power on again.■ Press the Reset Button.
Buttons do not work.	<ul style="list-style-type: none">■ Check if the [HOLD] switch is in the direction of the arrow position.■ Check if you pressed the right button, then press again.■ Press the Reset Button.
The screen will not turn on.	<ul style="list-style-type: none">■ If set to <Backlight Time> in <Settings> → <Display> the screen may be turned off. Press any button to turn the screen back on.■ The screen may not be visible under direct sunlight.
Power is turning off.	The power is automatically turned off when the battery is fully discharged. Recharge the battery.
Battery life differs from the Manual.	<ul style="list-style-type: none">■ The battery life may vary, depending on the settings of EQ and LED effects.■ Product life may be shortened when left for extended periods in low or high temperatures.

Troubleshooting (Continued)

Problem	Check points & Troubleshooting
Playing is disabled.	<ul style="list-style-type: none">■ Check if the available file has been saved in the memory.■ Check if the music file is damaged.■ Check if there is enough battery power.
File upload is disabled.	<ul style="list-style-type: none">■ Check to see if the USB connection plug is properly connected and reconnect it.■ Check if the memory is full.■ Press the Reset button.
Files or Data are Missing.	Check if the USB connection plug has been disconnected during file or data transmission. If this is the case, it may cause serious damage not only to files/data but also to the product. You have to be extra cautious as Samsung is not held responsible for data loss.
Abnormal Play Time Display during Play.	Check if the file is in VBR (Variable Bit Rate) format.
Abnormal Display of File Name.	Move to <Settings> → <Language> → <ID3-Tag> in the Menu screen and set an appropriate language.

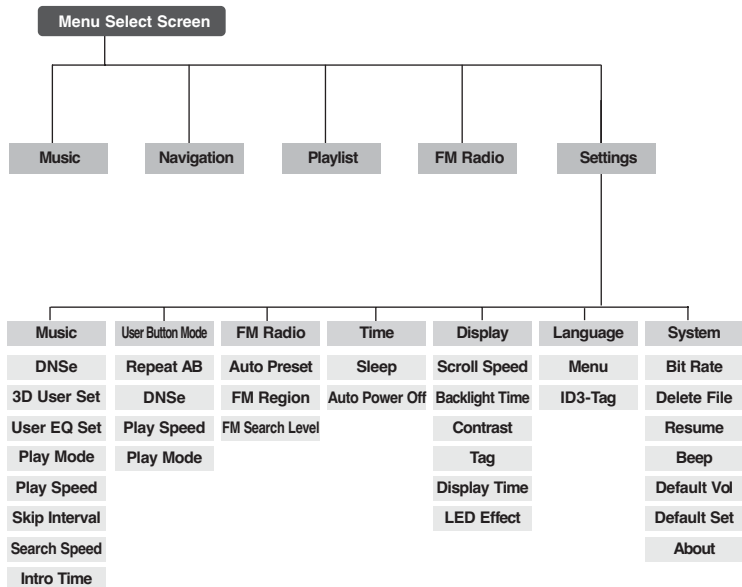
Problem	Check points & Troubleshooting
Program Malfunction	Please check if the PC requirements are met.
Connection to a PC is disabled.	<ul style="list-style-type: none">■ (For Windows 98SE) Check if the USB driver is installed and install the driver if the program is not installed.■ (For Windows ME/2000/XP) Press <Start> on the desktop and run Windows Update. Select critical updates and service packs and start update. Restart your PC and reconnect the player.
The backlight does not turn on.	<ul style="list-style-type: none">■ Check the backlight time.■ Check the battery.
The product is hot.	Heat may be generated during recharging. This has no effect on the product life or functions.

Chapter 6. | Appendix

Menu Tree.....	63
Manual USB Driver Installation.....	64
Product Specifications	67
License.....	68
Contact SAMSUNG WORLD WIDE.....	70

Menu Tree

You can quickly view the menu structure.



Manual USB Driver Installation

Install the USB driver manually if it could not be installed automatically or an error occurred during installation.

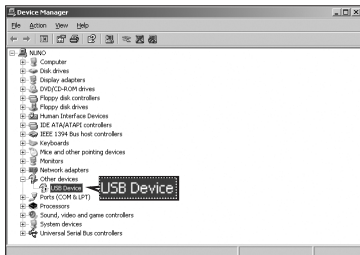
Before you start! ■ Insert the installation CD in the CD-ROM drive.

If an error occurs during installation of the USB driver

1 Check the device manager.
Windows 98SE/ME: Control Panel → System → Device Manager
Windows 2000 / XP: Control Panel → System → Hardware → Device Manager

2 Check if there is a device listed with an exclamation point or a question mark (displayed as unknown device or USB device).

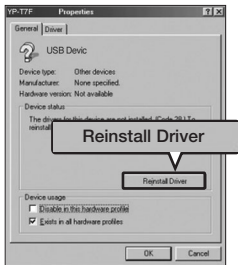
3 Double click on the device listed with an exclamation point or a question mark.



NOTE

- If you are using Windows 2000 and your version of Windows does not recognize the USB driver please download and install the latest service pack from windowsupdate.microsoft.com
- The installation method may vary depending on the type of PC or operating system. Contact your PC dealer or service center for installation information.
- If errors occur continuously when you install the USB driver, reconnect the USB Connection Plug after rebooting your system.

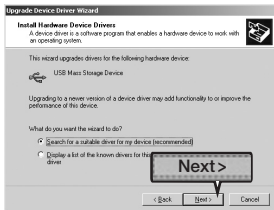
- 4** After selecting the driver, click [Reinstall Driver].



- 5** Click [Next].



- 6** Select [Search for a suitable driver for my device] and then click [Next].



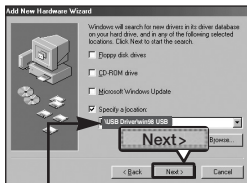
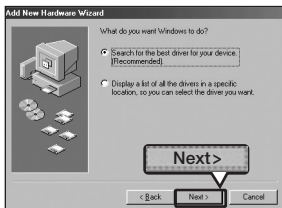
- 7** Click [Next] to finish.



Manual USB Driver Installation (Continued)

In Windows 98SE

Follow the instructions in the window to complete the installation.



USB driver location
[CD-ROM] USB Driver\win98 USB

You must reboot your computer to complete the installation.



NOTE

- You cannot use it as a removable disc in Windows 98SE if the player program is not installed. Make sure to install the USB driver file first.

Product Specifications

Model Name		YP-U2
Power		3.7V (Li-Polymer Rechargeable)
Built-in Battery Power		280mAh
Built-in Memory capacity		512MB(YP-U2 X), 1GB(YP-U2 Z), 2GB(YP-U2 Q)
File	Compatibility	MPEG1/2/2.5 Layer3(8kbps~320kbps, 8kHz~48kHz) WMA, ASF(48kbps~192kbps,8kHz~48kHz), Ogg(Q0~Q9)
Supported Number of Files and folders		File: Max. 2000 Folder: Max. 200
Earphone Output		20mW(France 5mW/CH)(16Ω)
Output Frequency Range		20Hz~20KHz
Noise Ratio		88dB with 20KHz LPF(based on 1KHz 0dB)
Play Time		13 hours of music play (MP3 128kbps, Volume 20, Normal sound mode)
Temperature Range for Operation		- 5~35°C (23~95°F)
Case		Plastic
Weight		28g
Dimension(WxHxD)		24.4X87.5X12.6 mm

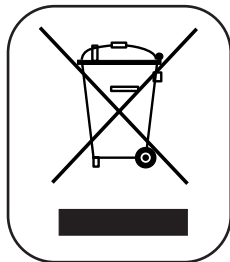
- The contents of this Manual are subject to change without prior notice for further improvement.

License

The product player accompanying this user manual is licensed under certain intellectual property rights of certain third parties. This license is limited to private non-commercial use by end-user consumers for licensed contents. No rights are granted for commercial use. The license does not cover any product player other than this product player and the license does not extend to any unlicensed product player or process conforming to ISO/IEC 11172-3 or ISO/IEC 13818-3 used or sold in combination with this product player. The license only covers the use of this product player to encode and/or decode audio files conforming to the ISO/IEC 11172-3 or ISO/IEC 13818-3. No rights are granted under this license for product features or functions that do not conform to the ISO/IEC 11172-3 or ISO/IEC 13818-3.

— EUROPE ONLY —

This marking shown on the product or its literature, indicates that it should not be disposed with other household wastes at the end of its working life. To prevent possible harm to the environment or human health from uncontrolled waste disposal, please separate this from other types of wastes and recycle it responsibly to promote the sustainable reuse of material resources. Household users should contact either the retailer where they purchased this product, or their local government office, for details of where and how they can take this item for environmentally safe recycling. Business users should contact their supplier and check the terms and conditions of the purchase contract. This product should not be mixed with other commercial wastes for disposal.



Contact SAMSUNG WORLD WIDE

If you have any questions or comments relating to Samsung products, please contact the SAMSUNG customer care center.

Country	Customer Care Center	Web Site
CANADA	1-800-SAMSUNG (7267864)	www.samsung.ca
MEXICO	01-800-SAMSUNG (7267864)	www.samsung.com/mx
U.S.A	1-800-SAMSUNG (7267864)	www.samsung.com
ARGENTINE	0800-333-3733	www.samsung.com/ar
BRAZIL	0800-124-421	www.samsung.com/br
CHILE	800-726-7864(SAMSUNG)	www.samsung.com/cl
COSTA RICA	0-800-507-7267	www.samsung.com/latin
ECUADOR	1-800-10-7267	www.samsung.com/latin
EL SALVADOR	800-6225	www.samsung.com/latin
GUATEMALA	1-800-299-0013	www.samsung.com/latin
JAMAICA	1-800-234-7267	www.samsung.com/latin
PANAMA	800-7267	www.samsung.com/latin
PUERTO RICO	1-800-682-3180	www.samsung.com/latin
REP. DOMINICA	1-800-751-2676	www.samsung.com/latin
TRINIDAD & TOBAGO	1-800-7267-864	www.samsung.com/latin
VENEZUELA	1-800-100-5303	www.samsung.com/latin
BELGIUM	02 201 2418	www.samsung.com/be
CZECH REPUBLIC	844 000 844	www.samsung.com/cz
DENMARK	38 322 887	www.samsung.com/dk
FINLAND	09 693 79 554	www.samsung.com/fi
FRANCE	08 25 08 65 65 (0,15€/min)	www.samsung.fr
GERMANY	01805 - 121213 (€ 0,12/Min)	www.samsung.de

Country	Customer Care Center	Web Site
HUNGARY	06 40 985 985	www.samsung.com/hu
ITALIA	199 153 153	www.samsung.com/it
LUXEMBURG	02 261 03 710	www.samsung.lu
NETHERLANDS	0900 20 200 88	www.samsung.com/nl
NORWAY	231 627 22	www.samsung.com/no
POLAND	0 801 801 881	www.samsung.com/pl
PORTUGAL	808 200 128	www.samsung.com/pt
SLOVAKIA	0850 123 989	www.samsung.com/sk
SPAIN	902 10 11 30	www.samsung.com/es
SWEDEN	08 585 367 87	www.samsung.com/se
U.K	0870 242 0303	www.samsung.co.uk
RUSSIA	8-800-200-0400	www.samsung.ru
UKRAINE	8-800-502-0000	www.samsung.com/ur
AUSTRALIA	1300 362 603	www.samsung.com/au
CHINA	800-810-5858 , 010- 6475 1880	www.samsung.com/cn
HONG KONG	2862 6001	www.samsung.com/hk
INDIA	3030 82821600 1100 11	www.samsung.com/in
INDONESIA	0800-112-8888	www.samsung.com/id
JAPAN	0120-327-527	www.samsung.com/jp
MALAYSIA	1800-88-9999	www.samsung.com/my
PHILIPPINES	1800-10-SAMSUNG (7267864)	www.samsung.com/ph
SINGAPORE	1800-SAMSUNG (7267864)	www.samsung.com/sg
THAILAND	1800-29-3232 / 02-689-3232	www.samsung.com/th
TAIWAN	0800-329-999	www.samsung.com/tw
VIETNAM	1 800 588 889	www.samsung.com/vn
SOUTH AFRICA	0860 726786 (SAMSUNG)	www.samsung.com/za
U.A.E	800SAMSUNG (7267864)	www.samsung.com/mea

SAMSUNG

REV 0.0