

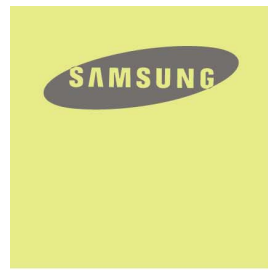


HongKong Only

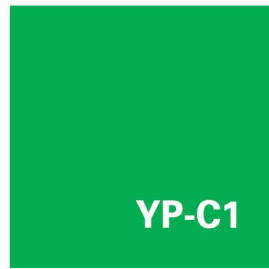
<http://www.samsungelectronics.com.hk>

AH68-01694N (Rev 0.0)

YP-C1



- MP3, WMA , Audio ASF and Ogg Playback
- Removable Storage Device
- Direct MP3 Recording
- FM Reception
- SRS WOW Surround Sound
- USB 2.0 Support
- Upgradable
- 42 Hours of Continuous Play
- Voice Recording Function



YP-C1

Preparations

Safety Instructions	4
Features	6
Components	8
Location of Controls	9

Connection to Computer

Connecting the player to PC	11
Manual Installation of USB Driver	15
Using the removable storage(PC)	18
● Downloading/Uploading files	18
● Disconnecting the USB cable	18
● Formatting	19
Installing Music Studio	20
To View Help on Music Studio	21

Basic Usage

Playing Music and Turning Off the Device	22
Hold Function	23
Recording Voice	23
Recording MP3s	24
Searching for Music/Voice Files	26
Setting Bookmark	27
Listening to FM Radio	28
FM Recording	30

Additional Usage

Loop Repeating	30
MENU Options	31
Using Navigation	32
Setting Playlist	35
Setting the Advanced Functions	36
Selecting the Playmode	37
Setting the EQ mode	38
● Preset EQ	38
● Bass Booster	38
● WOW Set	39
● User EQ Set	40
Display Settings	41
● Scroll / Display Time	41
● Backlight / Contrast	42
● Tag / Bitrate	43
Language Settings	44
Setting the System	45
Recording Settings	48
Time Settings	49
Managing Files	50

Appendix

MENU Table	51
------------------	----

Customer Support

Troubleshooting	52
Specifications	54

Read and understand all the instructions to avoid injury to yourself and damage to the equipment.

<p>Do not expose to extreme temperatures (above 95°F or below 23°F). Do not expose to moisture.</p> 	<p>Do not subject the unit to severe impact, or place heavy objects on it.</p> 	<p>Do not let any foreign matter spill into the device.</p> 
<p>Be careful not to subject the player to excessive pressure when wearing it round your neck.</p> 	<p>Do not expose to chemicals such as benzene and thinners.</p> 	<p>Remove batteries when the device is left unused for a long period of time.</p> 
<p>Do not expose to direct sunlight or heat sources.</p> 	<p>Do not store in dusty areas.</p> 	<p>Do not try to disassemble and repair the device yourself.</p> 

* Please be aware that we claim no responsibility for damage from data loss due to breakdown, repair or other causes.

Earphones

Follow Traffic Safety Instructions

- Do not use the earphones while driving an automobile or riding a bicycle. It's not only dangerous, but also against the law.
- It may cause an accident if you turn up the volume of the earphones while walking, especially when crossing intersections.

Protect your ears

- Do not turn up the volume too high. Doctors warn against prolonged exposure to high volume.
- Stop using the device or turn the volume down if you have ringing in your ears.

Ambient operating conditions

- Ambient temperature : 5°C ~ 35°C (41°F ~ 95°F)
Humidity : 10 ~ 75%

Environmental Information

- Follow local guidelines for waste disposal when discarding packages, batteries, and old electronic appliances.
- Your player is packaged with cardboard, polyethylene etc., and does not use any unnecessary materials.

MP3, WMA , Audio ASF and Ogg Playback

- The player supports playback of MP3, WMA, Audio ASF and Ogg.

Removable Storage Device

- You can easily copy and paste files to the player using Windows Explorer.

Direct MP3 Recording

- You can convert music from CDs, cassettes, and radio into MP3 files without a PC.

FM Reception

- Listening to an FM program is made easy with Auto Search and Frequency Memory functions.

SRS WOW Surround Sound

- The 3D surround feature adds spaciousness to the sound.

USB 2.0 Support

- Maximum data speed transfer of 18 Mbps.

Upgradable

- You can upgrade the built-in programs when available.
Please check the home page (www.samsungelectronics.com.hk) for upgrades.

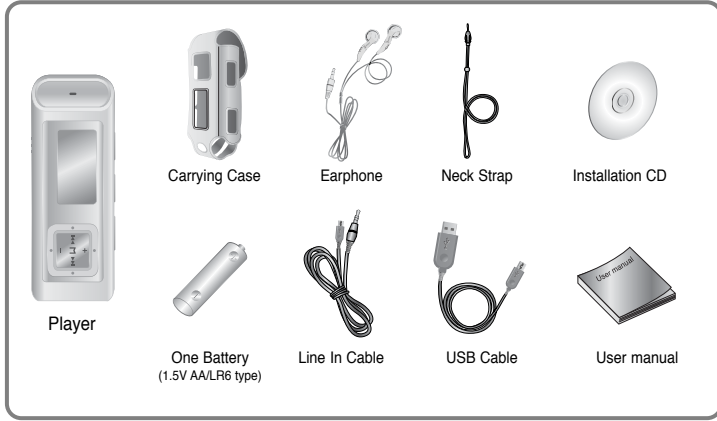
42 Hours of Continuous Play

- This player uses one AA/LR6 alkaline battery. Operation can last up to 42hours.
Actual playing time may vary according to the type and capacity of the battery.

Voice Recording Function

- You can make high quality voice recordings.

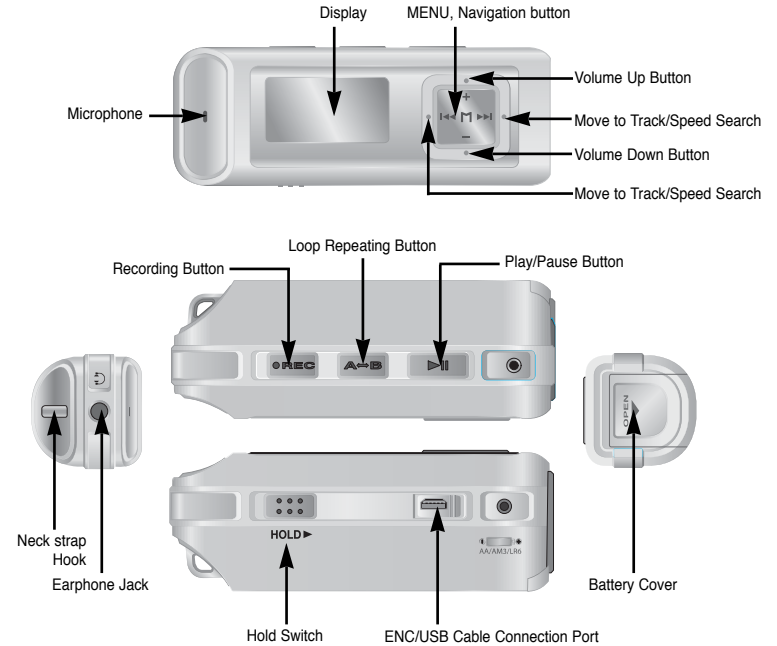
Components



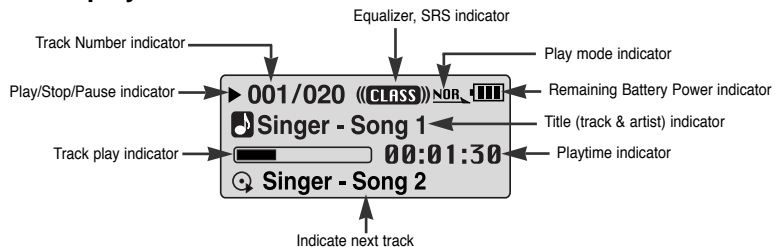
Model	YP-C1 H	YP-C1 V	YP-C1 X	YP-C1 Z
Built-in memory	128MB	256MB	512MB	1GB

- The capacity of the useable built-in memory is less than indicated as the internal firmware uses a part of the memory as well.
- Design of accessories is subject to change for the purposes of improvement, without notice.

Location of Controls



Display



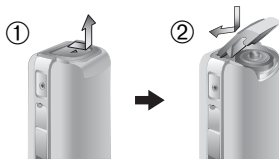
Note

- The screen pictures are for illustration purposes only. The actual screen may differ.

Inserting a Battery

1 Slide the cover in the direction of the arrow to open.

2 Insert a battery to the right poles + , - and push-close the cover in the direction of the arrow as indicated.



Note

- Do not place heavy objects on the cover.

System Requirements.

The PC system must meet the following specifications:

- Pentium 200MHz or greater
- Windows 98 SE/ME/2000/XP
- 40MB of available hard disk space
- CD-ROM drive
- CD-ROM drive (double speed or greater)
- USB port (2.0) supported
- VGA graphic



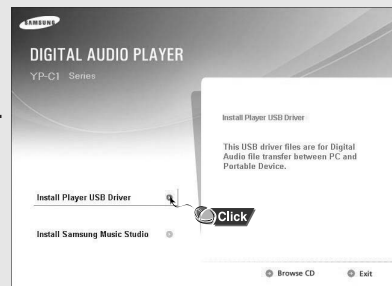
Note

- Install the operating system in Administrator Account (main user) for Windows 2000 or XP. Otherwise, installation will not be completed.
- Windows ME, 2000 and XP can recognize the driver without installing the provided program. However, you must install the program in order to format the player and upgrade firmware.
- If the YP-C1 program has not been installed in Windows 98, then it will not communicate with your removable disc. You must install the USB driver file first.

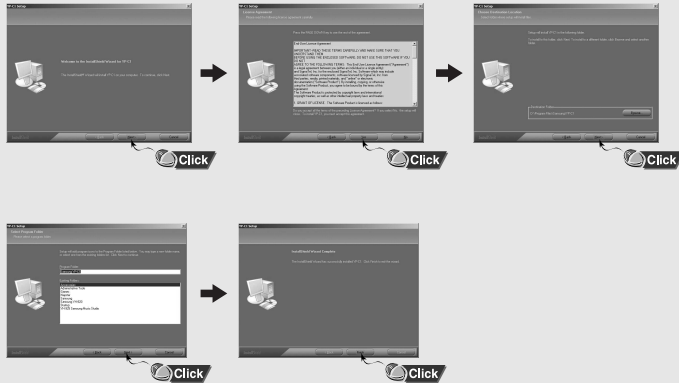
Before connecting the player to PC, make sure to install USB driver. If "Add New Hardware Wizard" appears, press the [Cancel] button and install the USB driver.

Installing software

1 Insert the Installation CD into the CD-ROM drive. Select [Install Player USB Driver].

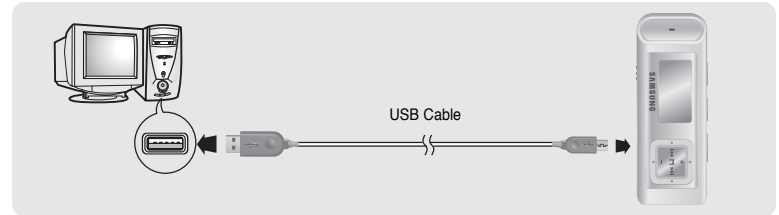


2 Follow the instructions in the window to complete the installation.



| Connecting the player to PC with the USB cable

- 1 Connect the USB cable to the USB port on the computer.
- 2 Connect the other end of the USB cable to the USB cable connection port on the bottom of the player.
 - If you disconnect the USB cable from your PC while implementing a command or initializing during USB driver installation, your PC may not function correctly.
- 3 The USB driver is installed with a message saying that it is searching for a new device. You may not see the display screen during installation. Go to the device manager to check that installation has been successfully completed.
- 4 Upon installation of the USB driver "Samsung YP-C1 USB Device" will appear in the [System Properties] → [Device Manager].



How to check USB driver

Windows 98:

Control Panel → System → Device Manager → Disk Drives → Samsung YP-C1

Windows 2000:

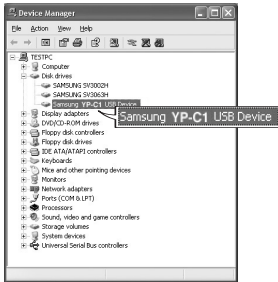
Control Panel → System → Hardware → Device Manager → Disk Drives →

Samsung YP-C1 USB Device

Windows XP:

Control Panel → System → Hardware → Device Manager → Universal Serial Bus controllers →

Disk Drives → Samsung YP-C1 USB Device



5 When the USB driver is not installed automatically, refer to the next page.

Go to "Downloading/Uploading files" if the USB driver is installed.

Follow these steps if the USB driver is not installed :

When an error occurs installation of the USB driver

1 Check the device manager.

Windows 98,ME:

Control Panel → System → Device Manager

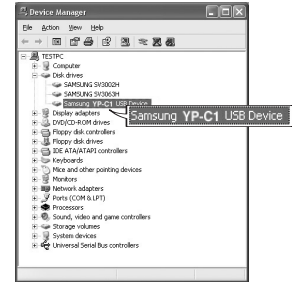
Windows 2000 / XP:

Control Panel → System → Hardware →

Device Manager

2 Check if there is a device listed with an exclamation point or a question mark (displayed as unknown device or USB device).

3 Double click on the device listed with an exclamation point or a question mark.



Note

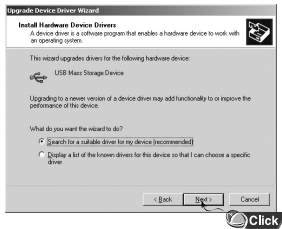
- If you are using Windows 2000 and your version of Windows does not recognize the USB driver please download and install the latest service pack from windowsupdate.microsoft.com
- The installation method may vary depending on the type of PC or operating system. Contact your PC dealer or service center for installation information.
- If errors occur continuously when you install the USB driver, reconnect the USB cable after rebooting your system.

Manual Installation of USB Driver

4 After selecting the driver, click [Update Driver].



6 Select [Search for a suitable driver for my device] and then click [Next].



5 Click [Next].



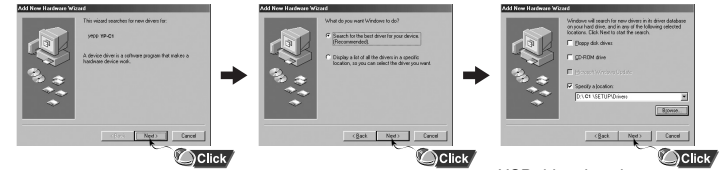
7 Click [Next] to finish.



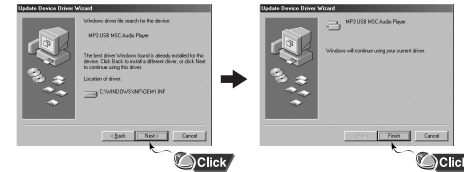
Manual Installation of USB Driver

In Windows 98

Follow the instructions in the window to complete the installation.



USB driver location
[CD ROM]setup\Drivers



: You must reboot your computer to complete the installation.

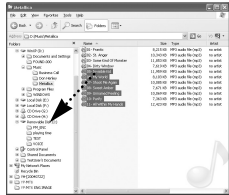
Note

- You cannot use it as a removable disc in Windows 98 if the YP-C1 program is not installed. Make sure to install the USB driver file first.

Using the removable storage(PC)

Downloading/Uploading files

- 1 Connect the player to your PC with the supplied USB cable.
- 2 Open Windows Explorer on PC.
 - Removable Disc is displayed in Windows Explorer.
- 3 Select the file to save and drag-and-drop it into the removable disk icon.
(In numerical, alphabetical order)
 - If you change the name of music files in Windows Explorer like 001* ** , 002* ** *, music files will be played in the order of number indicated.



Notice

- The "WRITING/READING" message will appear during file download or upload. Disconnecting the USB cable while "WRITING/READING" is displayed may cause malfunction of the unit.
- The order of music files is not relative to the replay order when you select a Removable Disc in Windows Explorer.

Disconnecting the USB cable

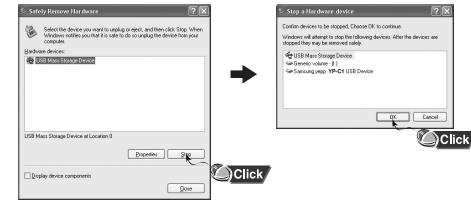
After completing the file transfer, you must disconnect the cable in the following way:

- 1 Double-click on the green arrow in the taskbar on the bottom right of the window.



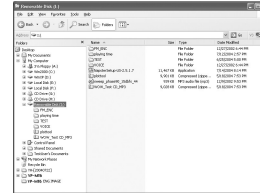
Using the removable storage(PC)

- 2 When the [Stop a Hardware device] message appears, press the [OK] button and disconnect the USB cable.



Formatting

- 1 Select the removable disc icon and click the right mouse button to select [Format].
- 2 Press the [Start] button.
 - All saved files will be formatted.
 - You can change the name of removable disc by selecting [Volume label].



Note

- By formatting, all previously preset menus will be initialized.
- Care must be taken as formatted files can not be recovered.

Installing Music Studio

Music Studio is a program that enables you to play back music files on your PC.

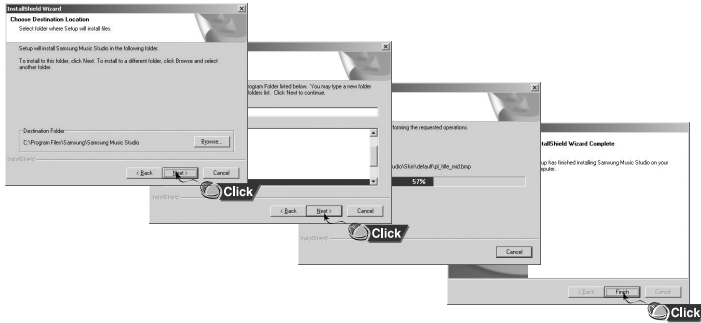
1 Insert the Installation CD into CD-ROM drive.
Select **[Install Samsung Music Studio]**.



2 Select language



3 Follow the instructions in the window to complete the installation.
● Please refer to Help for more information on how to use Music Studio.



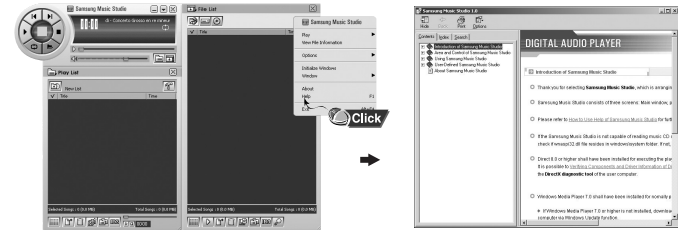
To View Help on Music Studio

Run Music Studio and press F1.

● Help will appear.

Move the arrow to the top of Music Studio and right click on the mouse. The following selection window will appear.

● Click on Help and the Help window will appear.



Note

- Music recognition technology and related data are provided by Gracenote and Gracenote CDDB® Music Recognition ServiceSM.
- CDDB is a registered trademark of Gracenote. The Gracenote logo and logotype, the Gracenote CDDB logo and logotype, and the "Powered by Gracenote CDDB" logo are trademarks of Gracenote. Music Recognition Service and MRS are service marks of Gracenote.

Turning Power On and Off

Power On : Press the **▶||** button to turn on the power.

Power Off : Press and hold the **▶||** button to turn off the power.

Playing Music (Power On)

Press the **▶||** button.

- Playback starts.

Pausing Music (Power Off)

Press the **▶||** button to pause playback.

- If no buttons are pressed within 10 seconds (changes depending on settings), the player automatically powers off.
- While in Pause mode, press the **▶||** button again to resume playback.


Adjusting the Volume

Press **-**, **+** to adjust the volume from 00 to 30.

Note

- If the file name is not displayed correctly, move to **[Settings] → [Language] → [Menu]** and then change the language setting. When the language setting changes, the language in the menu screen changes accordingly.
- WMA files can only be played as music files with a compression rate of 48Kbps-192Kbps.
- The power off time can be set in the menu.

In Hold mode, all buttons are disabled.

Slide the  switch in the direction of the arrow.

- When the button is pressed, the “ HOLD!” message will appear on the display.

Recording Voice

* *To move to other modes from the Voice mode, refer to “Changing Mode”.*

- 1 Press and hold the **REC** button to start voice recording.
- 2 Press the **REC** button again to stop the recording and save the voice file.

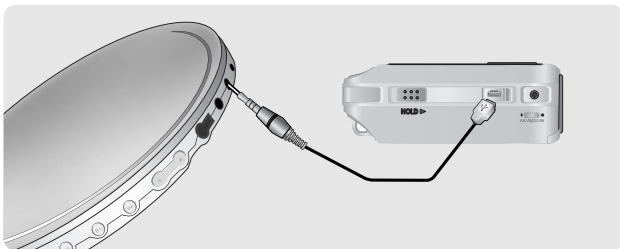


Note

- The files are recorded in the order of V001,V002....., and saved as WAV file in the VOICE folder after recording.
- If the Memory is full, Voice Recording is stopped automatically.
- Voice Recording does not work in FM Mode or when the Line In cable is connected.

* To move to other modes from LINE_ENC mode, refer to “Changing Mode”.

1 Connect the Audio Output port on the external audio source (or the Line Out port) to the ENC port on the device with the Line cable.



2 Press and hold the REC button to start MP3 recording.

- If the ►|| button is pressed, recording is paused and if the ►|| button is pressed again, the recording resumes.

3 If the REC button is pressed during recording, the recording stops and an MP3 file is created.

- The files are recorded in the order of L001, L002... and saved as MP3 file in LINE_REC folder after recording.

Note

- Bit Rates can be set within the range of 32Kbps~128Kbps.
- Volume can be adjusted while monitoring the recording.

Notice

- Do not disconnect the Line cable during recording.
- If the battery is not sufficiently charged, the player will not completely record the file.
- Adjust the volume of the external audio source to a suitable level and record it. If the volume level is too high, the sound quality may be poor.

▶ To search for specific parts during play

- Press and hold **I◀◀, ▶▶I** during playback to search for the part you want to listen to.
- Release **I◀◀, ▶▶I** to resume play normally.

▶ To change tracks during play

- Press **▶▶I** briefly during playback to play the next track.
- Press **I◀◀** briefly within 5 seconds after playback starts, to move to and play the previous track. Press **I◀◀** briefly after five seconds to play the current track from the beginning.

▶ To change tracks when stopped

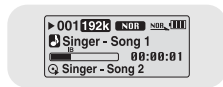
- Press **I◀◀, ▶▶I** in stop mode to move to the previous/next track.

Note

- VBR(Variable Bit Rate) file: A file that constantly changes the compression rate according to the type of sounds, such as their pitch, in the file.
- In the case of a VBR file, you cannot move to and play the previous track even if you press **I◀◀** within 5 seconds after playback starts.
- Files that were downloaded in MP2 or MP1 and had their file extension changed to MP3 may not play.

1 Press the REC button briefly during playback.

- "IB" mark will be displayed.
- Press **I◀◀, ▶▶I** within the bookmarked file to move to the bookmarked locations.
- If the bookmark is set, "B" mark is displayed when playing files that are not bookmarked.



2 To remove the bookmark, press the REC button once again at the bookmarked.

- "IB" mark will disappear.

First, press the "M" button to display the menu screen and select FM Radio.

Manual Search for a Frequency

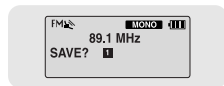
- Press **◀▶** briefly to search manually for the frequency you want.

Automatic Search for a Frequency

- Press and hold **◀▶** to search for and stop at frequencies with reception.

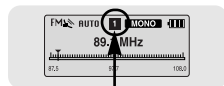
Manual Storage of a Frequency

- After searching manually for the frequency you want, press the **A↔B** button to display the save screen.
- Press **◀▶** to select the number you want to assign to save the frequency and then press the **A↔B** button.



Automatic Storage of a Frequency

- Press and hold the **A↔B** button while in FM Mode.
- Frequencies within the range of 87.5MHz to 108.0MHz are automatically selected and stored.
- Frequencies are automatically stored, starting from 1.



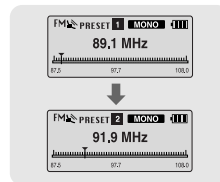
Number of channels saved.

Note

- To exit from FM Mode, press the "M" button.
- Mono (MO) or Stereo (ST) is automatically selected.

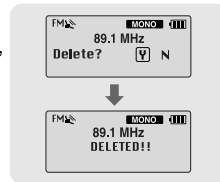
Searching Stored Frequencies

- 1 Press the "M" button in FM Mode.
 - PRESET screen will appear.
- 2 Use **◀▶** to move to the frequency you want.



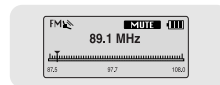
Deleting Stored Frequencies

- 1 After moving to the PRESET number you want to delete, press and hold the **A↔B** button.
 - 'Delete?' screen will appear.
- 2 After selecting the "Y", press the "M" button.
 - The saved PRESET number will be deleted.



Mute Function

- 1 Press the **▶||** button in FM mode.
 - "MUTE" is displayed and no sound is heard.
- 2 Press the **▶||** button again.
 - Mute function is released.

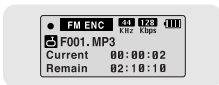


Note

- You can store up to 20 frequencies.
- Press the "M" button in the PRESET screen to exit the PRESET mode.

1 Press and hold the **REC** button during FM reception.

- Recording of the currently transmitted FM broadcast begins.



2 Press the **REC** button again.

- A file is created and the recording stops.
- Files are recording in the order F001, F002, F003...and saved as MP3 files in FM_ENC folder.

Notice

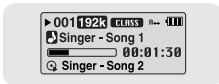
- If the battery is not sufficiently charged, the player will not completely record the file.

Loop Repeating

Starting Point

While playing music files, press the **A↔B** button briefly at the beginning of the loop you want to set.

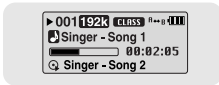
A↔ appears in the display.



Ending Point

Press the **A↔B** button briefly again to set the end of the loop.

A↔B appears in the display.
The loop is played repeatedly.



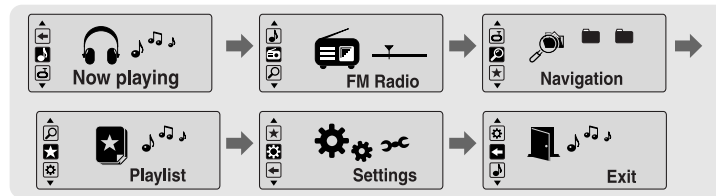
Note

- Press the **A↔B** button briefly to cancel the loop.
- Loop Repeat is automatically released if you Speed Search with **⏮**, **⏭**.

Press and hold the "M" button to switch to MENU mode.

Use **←**, **→** to move and press the "M" button briefly to select the menu you want.

Press and hold the "M" button to exit the MENU mode.



- Now playing : To check the file currently playing.
- FM Radio : To listen to FM radio
- Navigation : To move to Navigation Mode and browse files and folders
- Playlist : To play back only the files you want
- Settings : To set the functions
- Exit : To exit MENU

Note

- Menu mode will be cancelled if no buttons are pressed within 15 seconds
- Language in the menu screen can be changed in [Settings] → [Language] → [Menu].

You can easily search for files or switch modes using the Navigation function.

1 Press the "M" button to enter Navigation mode.
or press and hold the "M" button to move to Menu and then select Navigation in Menu.

2 Select the file or folder that you want to play.

- **⏪**: When moving to a higher-level folder.
- **⏩**: When moving to a lower-level folder.
- **←, →**: When moving to a file or folder in the same directory.
- "M": Move to the next folder down. When there is not a lower folder, the selected file will be designated as part of the playlist.

3 Press the **▶||** button.

- The selected file will be played.



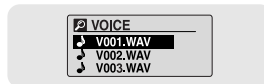
- Press and hold the "M" button in Navigation mode to exit the Navigation mode.

Changing Mode

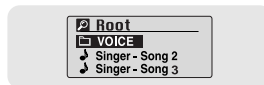
You can change the mode in the following method.

Ex) To change from the Voice mode to the Music mode

1 Press the "M" button in the Voice mode.

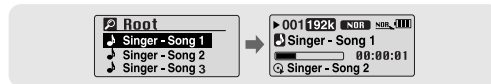


2 Use **⏪** to move to the upper folder.



3 Use **←, →** to move to the music file you want and press the **▶||** button.

- As it is changed to the Music mode, the selected file will be played.




- To change to the FM mode, refer to "Menu Options".

Playing/Exiting Folder

▶ Playing Folder

1 Press the "M" button to move to the Navigation mode.

2 Use **-**, **+** to move to the folder you want and press the **▶||** button.


- When "  " appears, the selected file will be played.



▶ Exiting Folder Play

1 Press the "M" button during folder playback to move to the Navigation mode.

2 Use **-**, **+** to move to the file you want and press the **▶||** button.

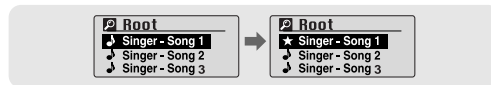
- After folder play is released, "  " mark will appear and the selected file will be played.



Setting Playlist

- Move to the file you want in Navigation mode and press the "M" button.

- The selected file will be marked.
- To exit the playlist setting, move to the marked file in Navigation mode and press the "M" button again.




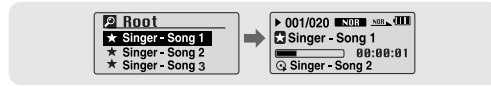
Playing Playlist

1 Press and hold the A↔B button in music mode or select Playlist in Menu.

- The playlist you set will be displayed.

2 Move to the file you want to play and press the **▶||** button.

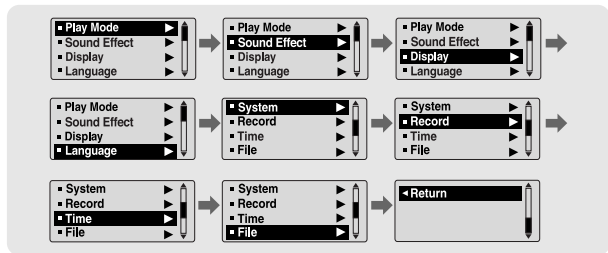
- "  " mark appears and the selected file will be played.



1 Select **Settings** in the MENU. (refer to “MENU Options”)

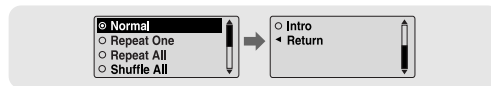
2 In Settings, use **-,+** to move to the function you want and press the “M” button to select.

- To move to a previous menu, use **⏪** or select Return.



1 Select **Play Mode** in Settings.

2 In Play mode, use **-,+** to move to the mode you want and press the “M” button to select.

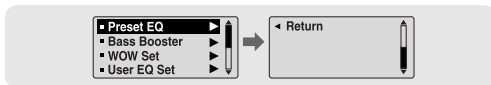


- Normal: To play all the tracks in order one time.
- Repeat One: To repeat one track.
- Repeat All: To repeat all tracks.
- Shuffle All: To play tracks at random.
- Intro: To listen to the first part of all saved tracks for 10 seconds.
- Return: To move to a previous menu

Setting the EQ mode

1 Select **Sound Effect** in Settings.

2 In **Sound Effect**, use **←, +** to move to the sound mode you want and press the "M" button.



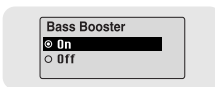
Preset EQ

- Use **←, +** to move to the sound mode you want and then press the "M" button.
- **SRS** → **TruBass** → **WOW** → **Normal** → **Classic** → **Jazz** → **Rock** → **User EQ**
- Select User EQ Set to set the EQ as desired.



Bass Booster

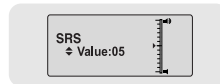
- Use **←, +** to select Bass Booster On or Off and then press the "M" button.
- Bass Booster function is applied only when you select Normal, Classic, Jazz or Rock in the Preset EQ.
- **On**: When the music is played back, the bass is enhanced in the preset sound.
- **Off**: Music is played back in the preset sound.



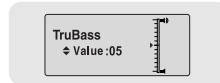
Setting the EQ mode

WOW Set

- Use **←, +** to select the SRS function you want and then press the "M" button.
- The SRS function is applied only when you select the SRS, TruBass or WOW in the Preset EQ.

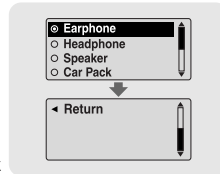


- **SRS** : You will hear 3D Stereo sound.
Use **←, +** to adjust SRS from 0 to 10.
- **TruBass** : This is a bass boost feature that adds fullness to the sound.
Use **←, +** to adjust TruBass from 0 to 10.
- **Focus** : You can enjoy clearer tone during playback.
Use **←, +** to set Focus and then press the "M" button.



High → **Middle** → **Low**

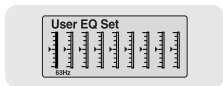
- **Optimum** : Optimize the SRS function according to the device connected to the main unit.
Use **←, +** to move to the connected device and then press the "M" button.



Earphone → **Headphone** → **Speaker** → **Car Pack**

User EQ Set

- If User EQ is selected in Preset EQ, EQ can be set to your preference in the User EQ Set.
- Use **◀▶** to move to right or left and use **- +** to adjust the level.
Press the "M" button after completing the setting.



Note

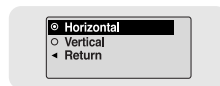
- SRS is a trademark of SRS Labs, Inc.
- WOW technology is incorporated under license from SRS labs, Inc..
- Please adjust the volume to a suitable level, as the volume may increase in the SRS setting.
- This unit supports sampling frequencies of 32KHz, 44.1KHz or 48KHz.
- The SRS function is not set for voice recording files.

Select **Display** in Settings.

Scroll

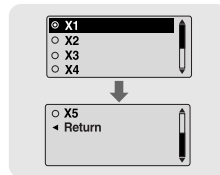
[Type]

- Use **- +** to select the scroll type.
- **Horizontal** : Music title moves horizontally.
- **Vertical** : Music title moves vertically.



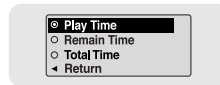
[Speed]

- Use **- +** to set the scroll speed from X1 to X5 to adjust the speed of the track title movement.




Display Time

- Use **- +** to select the display time.
- **Play Time**: Current playback time is displayed.
- **Remain Time**: Remaining time from total playback time is displayed.
- **Total Time**: Total playback time is displayed.



Backlight

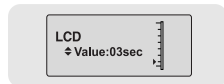
[Jog]

- Use **←**, **→** to set the  Light-On time from Off to 60 seconds.
- When set to On, the Light stays on continuously.



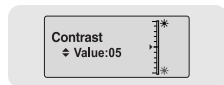
[LCD]

- Use **←**, **→** to set the LCD Light-Off time from Off to 60 seconds
- When set to On, the Light stays on continuously.



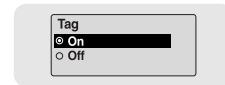
Contrast

- Use **←**, **→** to set the contrast from 0 to 10 to adjust the brightness of the screen.



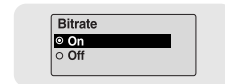
Tag

- Use **←**, **→** to select Tag On or Off.
- **On**: Display the Tag information if the music file has Tag information. Display the file name if the music file has no Tag information.
- **Off**: Display the name of music file.



Bitrate

- Use **←**, **→** to select Bitrate On or Off.
- **On**: Bit rate is displayed at the top of the screen.
- **Off**: The total number of tracks is displayed at the top of the screen.



Select **Language** in Settings.

Menu

- Use **-**, **+** to select the language for displaying menu.
- **Chinese(S)** → **Chinese(T)** → **Dutch** → **English** → **French** → **German** → **Hungarian** → **Italian** → **Japanese** → **Korean** → **Polish** → **Portuguese** → **Russian** → **Spanish** → **Swedish**



ID3-Tag

- Use **-**, **+** to select the language for displaying Tag information.
- **Afrikaans** → **Basque** → **Catalan** → **Chinese(S)** → **Chinese(T)** → **Czech** → **Danish** → **Dutch** → **English** → **Estonian** → **Finnish** → **French** → **German** → **Greek** → **Hrvatski** → **Hungarian** → **Icelandic** → **Italian** → **Japanese** → **Korean** → **Norwegian** → **Polish** → **Portuguese** → **Romany** → **Russian** → **Slovak** → **Slovene** → **Spanish** → **Swedish** → **Turkish** → **Vietnamese** → **Return**



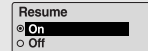
Note

- What is an ID3 Tag ?
This is what is attached to an MP3 to carry information relevant to the file, such as the title, artist, album, year, genre and a comment field.
- Supported languages can be changed or added.

Select **System** in Settings.

Resume

- Use **-**, **+** to select Resume On or Off.
- **On**: Play back music from the part of music you listened last if you play it back again after stopping.
- **Off**: Play back music from the beginning of music if you play it back again after stopping.



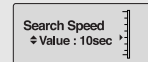
Default vol

- Use **-**, **+** to set the default volume from 0 to 30(Max).
- If the power is turned on again after having adjusted the volume above the default value, music is played at the default volume.
- If the power is turned on again after the volume was set to within the default value, the music is replayed at the previously played volume.



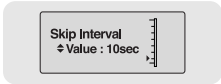
Search Speed

- Use **-**, **+** to set the Search Speed from 1sec to 1min.
- When you press and hold **⏮**, **⏭** to scan a track, you can adjust the scanning speed.



Skip Interval

- Use **-**, **+** to set the skip interval from 5sec to 10min.
- If you press **⏮**, **⏭** in music mode, you can search a track by a set time.
- In 1 Track setting, you can move to the previous track or the next track by pressing **⏮**, **⏭**.



Skip Interval
Value : 10sec

FM Region

- Use **-**, **+** to select FM Region.
- **Other Country** : Search FM frequency between 87.5MHz to 108.00MHz in the increase of 50 KHz.
- **Korea/US** : Search FM frequency between 87.5MHz to 108.0MHz in the increase of 100 KHz.
- **Japan** : Search FM frequency between 76.0MHz to 108.0MHz in the increase of 100 KHz.



Other Country
Korea/US
Japan
Return

FM Search Level

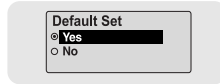
- Use **-**, **+** to select FM Search Level.
- The higher the FM Tuner Sensitivity, the more frequency it can receive.
- **High** → **Middle** → **Low**



High
Middle
Low
Return

Default Set

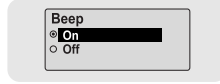
- Use **-**, **+** to select Default Set Yes or No.
- **Yes** : All settings selected will be initialized.
- **No** : All settings selected will remain as they are.



Default Set
Yes
No

Beep

- Use **-**, **+** to select Beep On or Off.
- **On**: Beep sounds whenever you press the button.
- **Off**: No beep sounds when you press the button.



Beep
On
Off

About

- If you select About, you can check version information, total number of tracks and remaining capacity.

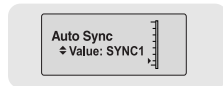
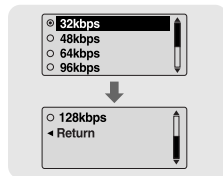


Ver. 1.000
010 Tracks
051MB Free

Select **Record** in Settings.

Bit Rate

- Use **←, →** to set the recording bit rate.
- When recording music into an MP3 file, you can select one of the following bit rates: 32Kbps, 48Kbps, 64Kbps, 96Kbps and 128Kbps.



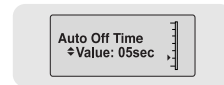
Auto Sync

- Use **←, →** to set the Auto Sync Time from 1 to 5 seconds.
- AutoSync Time is a function for separating and saving MP3 files when there is no sound for a set time during MP3 recording.
- In SYNC 1 setting, recording stops and it moves to Music Mode when there is no sound for over 1 second during recording.
- If AutoSync Time is set to Off, recording keeps going even if there is no sound, and then it is saved as one file.

Select **Time** in Settings.

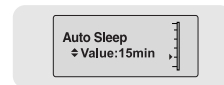
Auto Off Time

- Use **←, →** to set the Power-Off time from 0 to 3 minutes.
- If no button is pressed after play stops, the player will automatically turn off after the time you set.
- When set to Off, it will not turn off automatically.



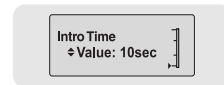
Auto Sleep

- Use **←, →** to set the Sleep time to 15, 30, 60, 90, or 120. The player will automatically turn off after the time you set.
- 15, 30, 60, 90 and 120 minutes are available for sleep time, and it will automatically turn off after the time you set.
- When set to Off, it does not turn off automatically.



Intro Time

- Use **←, →** to set the Intro time to 10, 20, 30, or 60 seconds.
- When you select the Intro function, the beginning of all files will be played back for the seconds you set.



Select **File** in Settings.

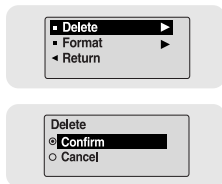
Deleting

1 Select **Delete** in File.

2 Use **←**, **→** to move to the file you want to delete and then press the “M” button.

3 Use **←**, **→** to move to Confirm and then press the “M” button.

- The selected file will be deleted.

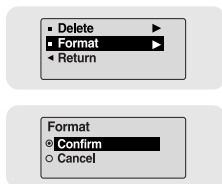


Formatting

1 Select **Format** in File.

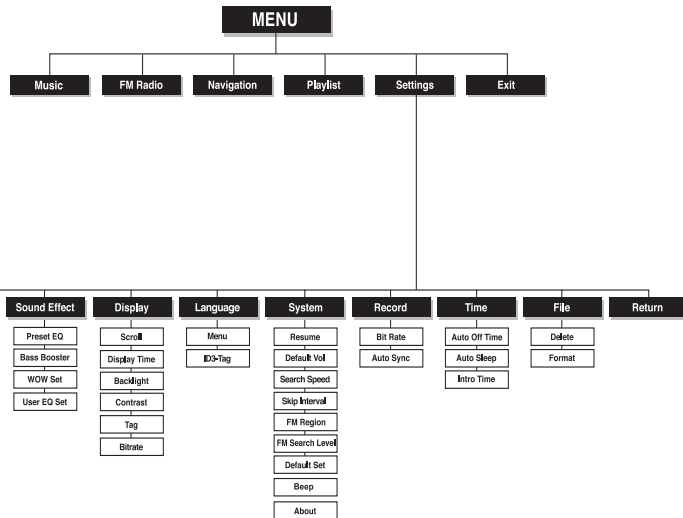
2 Use **←**, **→** to move to Confirm and then press the “M” button.

- The player will be formatted.



Note

- All files will be deleted when formatting the built-in memory.
- It is recommended that formatting be carried out on a PC that has the provided program installed as formatting in the Menu may take a long time.



- Use the “M” button to move and select.

The software doesn't work

- Refer to the System Requirements

The player does not work and the LCD displays nothing.

- Check the battery capacity
- Check to see if the battery is inserted to the right poles (+ , -)
- After connecting it to PC, execute YP-C1 Updater in the desktop to update the product.

In PLAY mode, music is not played after pressing the ►|| button

- Check to see if MP3 or WMA files are saved in the built-in memory.
- Check to see if the HOLD button is locked.

Files cannot be downloaded.

- Check to see if the driver is installed correctly in the computer.
- Check the connection between the player and PC.
- Check and/or replace the battery, turn on the play's power.
- Operating system limits the number of files you can save.
Please save your music files by creating a subfolder.
- Check if the memory is full.

Backlight does not work.

- Check the backlight setup.
- When the battery power is low, the backlight will go out.

The buttons do not work.

- Check setting of Hold switch.
- Remove the battery once and then insert it again.

The player keeps being turned off.

- In Stop mode, the power is automatically turned off after ten seconds (changes depending on settings).
- Check to see if there are files saved in it.

Something's wrong with play time displayed during Play mode.

- "VBR SONG" message is displayed while VBR (Variable Bit Rate) file is playing.

LCD window is dark

- Check Contrast

The file name is not displayed correctly.

- Move to [Settings] → [Language] → [ID3-Tag] in the Menu and then change the language setting.

There is a file saved in the player, but "No File" appears in the screen.

- After checking whether the folder is played, use the Navigation function to change the folder.
- After connecting it to PC, execute YP-C1 Updater in the desktop to update the product.

I cannot properly connect it to PC.

- Win98 : Try to connect again after installing the driver.
- WinME : Remove the driver program and press the Start in the desktop to execute Windows Update. After selecting important update and service pack, execute update all.
- Win2000/XP : Try to connect it again after rebooting PC.

Model	YP-C1
Built-in Memory capacity	128MB(YP-C1 H), 256MB(YP-C1 V), 512MB(YP-C1 X), 1GB(YP-C1 Z)
Voltage	1.5V X 1 (AA/LR6 size alkaline battery)
Playing time	lasts up to 42hours (Alkaline battery, MP3 128Kbps, Vol level 20)
Dimensions/Weight	26 X 71 X 26 mm / 34 g (without battery)
Case	Plastic
Noise Ratio	85dB with A FILTER
Earphones Jack Output Power	10mW/CH (16Ω)
Output Frequency Range	20Hz~20KHz
Operating Temperature Range	-5 ~ +35°C(23~95°F)
FM Frequency	87.50 ~ 108.00 MHz
FM Signal to Noise Ratio	60dB
FM T.H.D	1%
FM Useable Sensitivity	10dB
File Support	MPEG1/2/2.5 Layer3(8Kbps ~ 320Kbps, 8KHz ~ 48KHz) WMA, Audio ASF (8Kbps ~ 192Kbps, 8KHz ~ 48KHz), Ogg

The product unit accompanying this user manual is licensed under certain intellectual property rights of certain third parties. This license is limited to private non-commercial use by end-user consumers for licensed contents. No rights are granted for commercial use. The license does not cover any product unit other than this product unit and the license does not extend to any unlicensed product unit or process conforming to ISO/IEC 11172-3 or ISO/IEC 13818-3 used or sold in combination with this product unit. The license only covers the use of this product unit to encode and/or decode audio files conforming to the ISO/IEC 11172-3 or ISO/IEC 13818-3. No rights are granted under this license for product features or functions that do not conform to the ISO/IEC 11172-3 or ISO/IEC 13818-3.