

**SAMSUNG**

**YP-780**

**SAMSUNG ELECTRONICS CANADA, INC.**

**HEADQUARTERS**

7037 Financial Drive, Mississauga, Ontario, Canada L5N 6R3

TEL: 1-905-542-3535

[www.samsung.ca](http://www.samsung.ca)

**SERVICE DIVISION**

7037 Financial Drive, Mississauga, Ontario, Canada L5N 6R3

1-800-SAMSUNG (1-800-726-7864)

**SAMSUNG**

**ELECTRONICS**

DIGITAL AUDIO PLAYER

**yepp**™



- 2xMP3 support
- Touchpad operation
- MP3 and WMA playback
- Encoding function
- 3D sound
- 20 hours of continuous play
- Voice recording
- FM reception

AH68-01510S (Rev 0.0)

# Contents

## Preparations

Safety Instructions .....	4
Features .....	6
Components .....	9
Location of Controls (yepp) .....	10

## Connection to Computer

Connecting yepp to PC .....	12
Manual Installation of USB Driver .....	16
Using yepp Studio .....	22
● Downloading Files .....	22
● Creating 2xMP3 Files .....	24
● Downloading Albums .....	25
● Creating Folders .....	26
● Uploading Files .....	27
● Deleting Files .....	28
● Formatting .....	29
To View Help on yepp Studio .....	30

## Basic Usage

Playing Music and Turning Off the Device .....	32
Adjusting the Volume/Hold Function .....	33
Changing Modes .....	34
Recording Voice .....	35
Encoding MP3s .....	36
Searching for Music/Voice Files .....	38
Listening to FM Radio .....	40
Encoding From FM Radio .....	42

## Additional Usage

Loop Repeating .....	43
Setting SRS .....	44
MENU Mode .....	45
Selecting the Play Mode .....	46
Selecting the EQ Mode .....	47
Selecting the Play Folder .....	48
Managing Files .....	49
● Deleting .....	49
● Formatting .....	50
Setting the Advanced Functions .....	51
DISPLAY .....	52
● INFORMATION / BACK LIGHT .....	52
● CONTRAST / SCROLL SPEED .....	53
SOUND CONTROL .....	53
● WOW LEVEL / OPTIMIZATION .....	53
● ENCODE BIT RATE .....	54
● BEEP ON/OFF .....	55
● DEFAULT VOLUME .....	55
TIME CONTROL .....	56
● INTRO TIME / POWER OFF TIME / SLEEP TIME .....	56
Setting the FM Frequency Unit .....	57

## Appendix










MENU Table .....	58
------------------	----

## Customer Support

Troubleshooting .....	60
Specifications .....	62
Warranty .....	66

# Safety Instructions

Read and understand all the instructions to avoid injury to yourself and damage to the equipment.

<p>Do not expose to extreme temperatures (above 95°F or below 23°F). Do not expose to moisture.</p> 	<p>Do not apply excessive pressure to the device.</p> 	<p>Do not let any foreign matter spill into the device.</p> 
<p>Do not place heavy objects on top of the device.</p> 	<p>Do not expose to chemicals such as benzene and thinners.</p> 	<p>Remove batteries when the device is left unused for a long period of time.</p> 
<p>Do not expose to direct sunlight or heat sources.</p> 	<p>Do not store in dusty areas.</p> 	<p>Do not try to disassemble and repair the device yourself.</p> 

## Earphones

Follow Traffic Safety Instructions

- Do not use the earphones while driving an automobile or riding a bicycle. It's not only dangerous, but also against the law.
- It may cause an accident if you turn up the volume of the earphones while walking down the street, especially crossing at intersections.

Protect your ears

- Do not turn up the volume too high. Doctors warn against prolonged exposure to high volume.
- Stop using the device or turn the volume down if you have ringing in your ears.

## Ambient operating conditions

- Ambient temperature : 5°C ~ 35°C (41°F ~ 95°F)  
Humidity : 10 ~ 75%

## Environmental Information


- Follow local guidelines for waste disposal when discarding packages, batteries, and old electronic appliances.
- Yepp packages use cardboard, polyethylene etc., and do not use any unnecessary materials.

## DIGITAL SOUND Yepp'

### Featuring an Encoding Function

- You can make a MP3 file out of an source using the ENC jack on the main unit.
- You can also convert an FM radio program into an MP3 file in real time.

### Supports 3D surround sound

- You can feel the deep base and 3D surround sound.
-  is a trademark of SRS Labs, Inc.  
technology is incorporated under license from SRS labs, Inc.

### How to Operate the Touchpad

- You can easily operate the functions you want by using the touchpad.

## DIGITAL SOUND Yepp'

### MP3 & WMA Playback

- MP3 is an MPEG1 Layer3 audio format.
- WMA is a Microsoft Windows Media audio format.

### Supports 2xMP3

- In order to save more MP3 files, you can reduce the size of MP3 files by using 2xMP3 technology.

### FM Reception

- Listening to an FM program is made easy with Auto Search and Frequency Memory functions.

# DIGITAL SOUND Y'epP'

## Voice Recording Function

- You can do a Voice Recording with high quality and use it for a conference.

## Sound

- You can adjust equalizer manually.

## 20-Hour Continuous Play

- This unit uses one AAA/LR03 alkaline battery. Operation can last up to 20 hours.  
Actual playing time may vary according to the type and capacity of the battery.

## Components



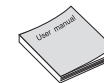
Player



Earphones  
AH30-00063C



USB Cable  
AH39-00498A



User manual  
AH68-01369F



Battery  
(AAA/LR03 type)  
4301-000115



Neck Strap  
AH61-01414A



Carrying case  
AH59-01266A



Line Cable  
AH39-00488A



Installation CD  
AH80-00054B

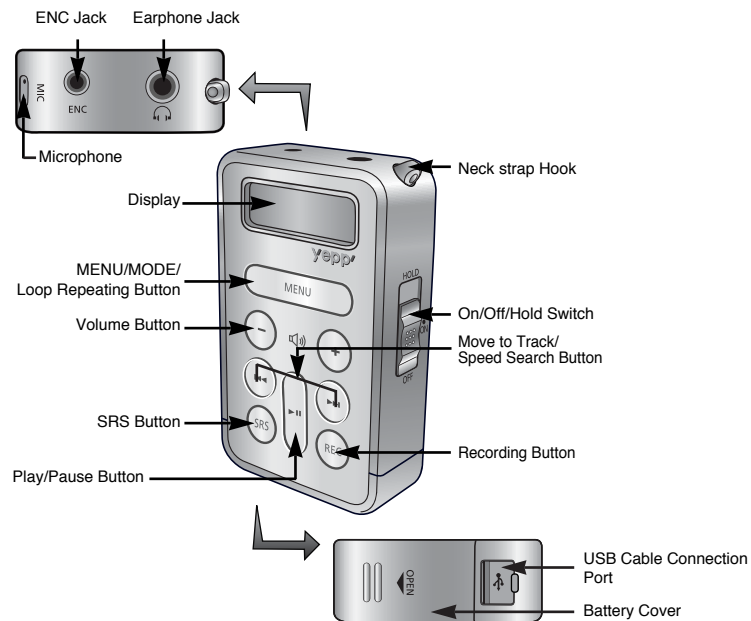
Model	YP-780 H	YP-780 V	YP-780 X	YP-780 Z
Built-in memory	128MB	256MB	512MB	1GB

- The capacity of the useable built-in memory is less than indicated as the internal firmware uses a part of the memory as well.
- Design of accessories is subject to change for improvement without notice.

### Notice :

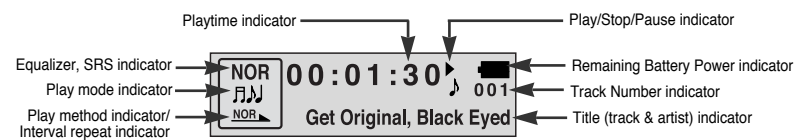
- Do not mix rechargeable and nonrechargeable batteries, alkaline or Ni-MH types of batteries, or different grades or brands of batteries.

## Location of Controls (yopp)

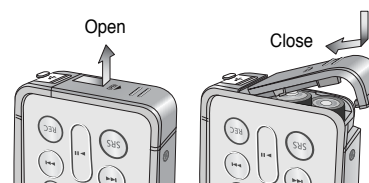


10

## Display



## Inserting a Battery



- 1 Slide the cover in the direction of the arrow to open.
- 2 Insert a battery to the right poles +, - and push-close the cover in the direction the arrow as indicated.

### Note :

- Do not place heavy objects on the cover.

11

# Connecting yepp to PC

## System Requirements.

The PC system must meet the following specifications:

- Pentium 133MHz or greater
- Windows 98 SE/ME/2000/XP
- 40MB of available hard disk space
- CD-ROM drive (double speed or greater)
- USB port (1.1) supported
- VGA graphic
- DirectX 8.0 or above

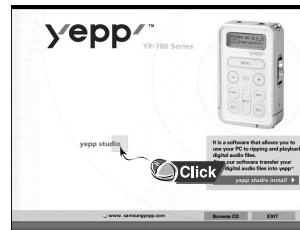
### Note :

- Windows ME, 2000 and XP can recognize the driver without installing the provided program. However, you must install the program in order to format yepp and upgrade firmware.

Before connecting yepp to PC, make sure to install USB driver. If "Add New Hardware Wizard" appears, press the [Cancel] button and install USB driver.

### Installing software

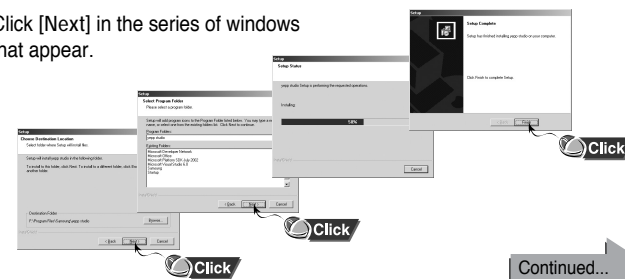
- 1 Insert the Installation CD into CD-ROM drive. The picture shown below appears. Select [yepp Studio].



- 2 Choose the language you wish to use.

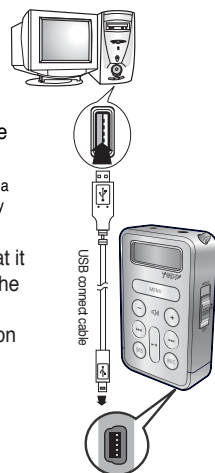


- 3 Click [Next] in the series of windows that appear.



## Connecting yepp to PC with USB cable

- 4 Plug one end of the USB cable into the USB port on the back of the PC.
- 5 Connect the opposite end of the USB cable to the USB cable port on the bottom of the yepp.
  - If you disconnect the USB cable from your PC while implementing a command or initializing during USB driver installation, your PC may not function correctly.
- 6 USB driver is installed with a message saying that it is searching for a new device. You may not see the display screen during installation. Go to the device manager to check that installation has been successfully completed.
- 7 Upon installation of the USB driver "SAMSUNG YP-780" will appear in the [System Properties] → [Device Manager].



## How to check USB driver

Windows 98:

Control Panel → System → Device Manager →

Universal Serial Bus controllers/Samsung YP-780 Class

Windows 2000:

Control Panel → System → Hardware →

Device Manager → Universal Serial Bus controllers →

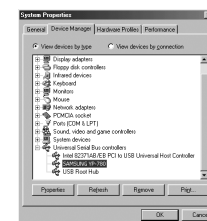
USB Mass Storage Device

Windows XP:

Control Panel → System → Hardware →

Device Manager → Universal Serial Bus controllers →

USB Mass Storage Device



- 8 When USB driver is not Installed automatically, refer to next page.

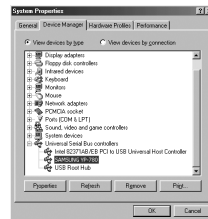


# Manual Installation of USB Driver

Go to "Using yepp Studio" if the USB driver is in place.  
Follow these steps if the USB driver is not in place :

## 1 Check the device manager.

Windows 98,ME:  
Control Panel → System → Device Manager  
Windows 2000:  
Control Panel → System → Hardware →  
Device Manager  
Windows XP:  
Control Panel → System → Hardware →  
Device Manager



## 2 Check if there is a device listed with an exclamation point or a question mark (displayed as unknown device or USB device).

## 3 Double click on the device listed with an exclamation point or a question mark.

## 4 After selecting the driver, click on [Update Driver].



## 5 Select a compatible driver, click on [Next] to finish.



Continued...

## In Windows XP

- 1 Select [Install from a list or specific location] and click the [Next] button.



- 2 Select [Include this location in the search] and designate [CDROM]/Drivers /win2k\_winxp or select [Search removable media].



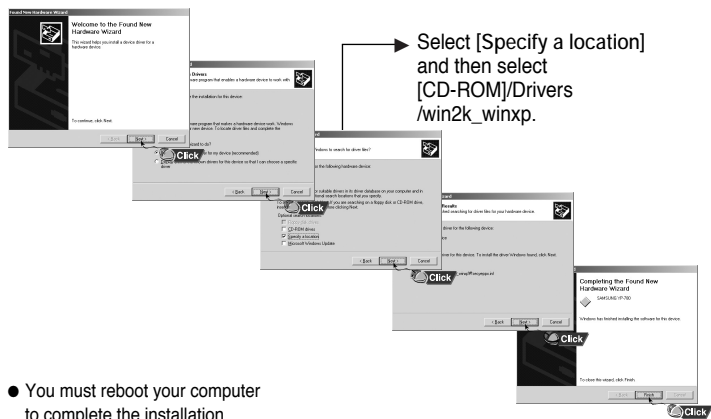
- 3 Click the [Finish] button when installation is complete.



- You must reboot your computer to complete the installation.

## In Windows 2000

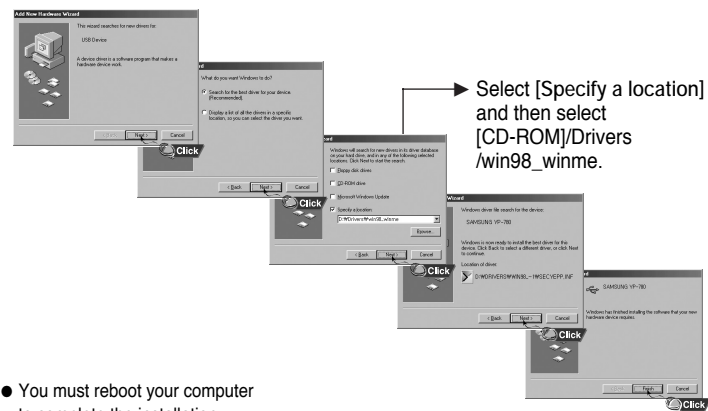
Click [Next] in the series of windows that appear.



- You must reboot your computer to complete the installation.

## In Windows 98

Click [Next] button in the series of windows that appear.



- You must reboot your computer to complete the installation.

# Using yepp Studio

## Downloading Files

- 1 Turn on the yepp and connect yepp to PC.
- 2 Select the file you wish to download from the Play List Window or File List Window.
  - If the Play List Window is empty, use the [Open Files] button on the main window or drag-and-drop the desired files from the File List Window to the Play List Window.
- 3 Drag-and-drop the selected files to the yepp folder in the yepp window or click the [Transmit to yepp] button to move the files.



- 4 When the Download List Window appears, click the **yepp Copy** button.

- The selected files are sent to yepp.
- You can change to the desired font when downloading.

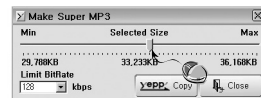


### Note :

- Refer to Help for more detailed information about using yepp Studio.
- When running yepp Studio for the first time, input the serial number listed on the back of the yepp when the Product Number Registration Window appears.

## Creating 2xMP3 Files

- 1 Click the **MP3** button on the Download List Window.
- 2 After selecting the Limit BitRate first, adjust the file size according to the sound quality.



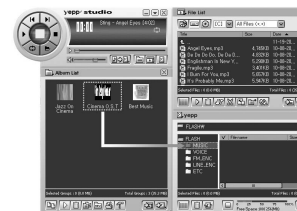
- 3 Click the **yepp Copy** button.  
● Files converted to 2xMP3 are sent to yepp.

### Note :

- Refer to Help for more detailed information about using yepp Studio.

## Downloading an Album

- 1 Turn on the yepp and connect it to the PC.
- 2 After selecting the album that you wish to download from the Album List Window, drag-and-drop the album to the Music folder in the yepp window.
- 3 When the Download List Window appears, click the **yepp Copy** button.  
● The selected album is sent to yepp.



### Note :

- Refer to Help for more detailed information about using yepp Studio.
- Albums can only be downloaded to the Music folder.

## Creating a Folder

- 1 Turn on the yepp and connect it to the PC.
- 2 After clicking in the Music folder using the right mouse button, select [Make Folder].
- 3 When the Making New Folder Window appears, click [OK] after entering the folder name.
  - A new sub-folder is created under the Music folder.

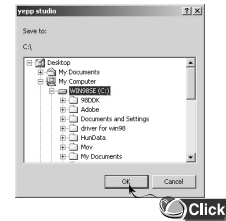


### Note :

- Refer to Help for more detailed information about using yepp Studio.
- A folder can only be created in the Music folder.
- Only sub-folders of the Music folder can be deleted.

## Uploading Files

- 1 Turn on the yepp and connect yepp to PC.
- 2 After selecting the files to upload in the yepp window, click the [Transmit to yepp] button at the bottom of the window.
- 3 After selecting the folder in which to save the files when the Folder Setting Window appears, click the [OK] button.



- 4 If you want to listen on the PC to a file that you sent, convert the VOC file to a WAV file.

- The VOC file and the newly created WAV file are saved together.



### Note :

- Refer to Help for more detailed information about using yepp Studio.
- MP3 and WMA formatted files that are in the Music folder are not uploaded to the PC.

## Deleting a File

- 1 Turn on the yepp and connect it to the PC.
- 2 After selecting the file that you want to delete in the yepp window, click the [Delete] button.
- 3 Click [Yes] when the confirm window appears.
  - The selected file is deleted.

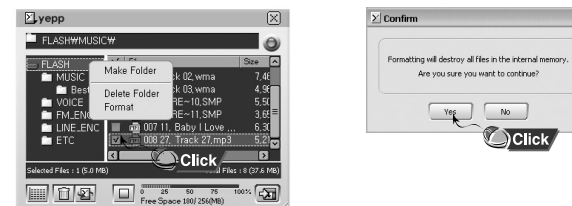


### Note :

- Refer to Help for more detailed information about using yepp Studio.

## Formatting

- 1 Turn on the yepp and connect it to the PC.
- 2 After clicking in the yepp window with the right mouse button, select [Format].
- 3 Click [Yes] when the confirm window appears.



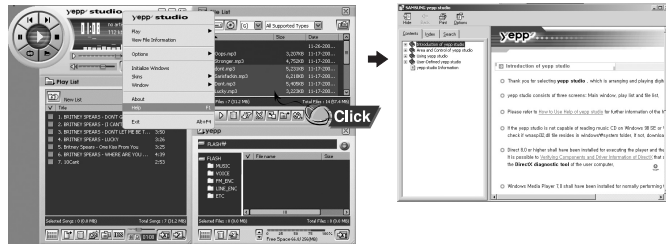
### Note :

- Refer to Help for more detailed information about using yepp Studio.

## To View Help on yepp Studio

Run yepp Studio and press F1.

- Help will appear.  
Move the arrow to the top of yepp Studio and right click on the mouse.  
The following selection window will appear.
- Click on Help and the Help window will appear.



### Note :

- Music recognition technology and related data are provided by Gracenote and Gracenote CDDB® Music Recognition Service<sup>SM</sup>.
- CDDB is a registered trademark of Gracenote. The Gracenote logo and logotype, the Gracenote CDDB logo and logotype, and the "Powered by Gracenote CDDB" logo are trademarks of Gracenote. Music Recognition Service and MRS are service marks of Gracenote.
- If a firewall is installed on the PC, it may not be possible to import CDDB information.



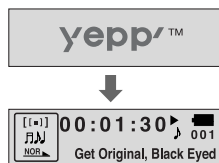
## Playing Music and Turning Off the Device

First insert batteries and connect the earphone correctly.

### Playing Music (Power On)

Turn on the power by pushing up the power switch on the side of the device.

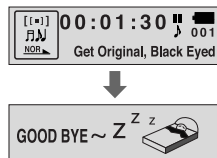
- Music and voice files can be played.



### Pausing Music (Power Off)

Pause playback by pressing the button.

- Turn off the power by pushing down the power switch on the side of the device.



#### Note :

- WMA files can be played only as music files with a compression rate of 64Kbps-192Kbps that can be created in Windows Media Player (Version 8.0).
- The power off time can be set in the menu.

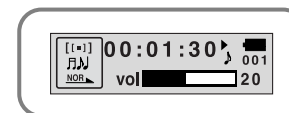
## Adjusting the Volume/Hold Function

### Adjusting the Volume

Move the , buttons to adjust the volume.

#### Note :

- The volume can be adjusted in increments between 0 and 40.
- Press once to adjust the volume by one level.  
Press and hold to increase or decrease the volume in greater increments.



### HOLD Function

Under Hold mode, buttons will not work.

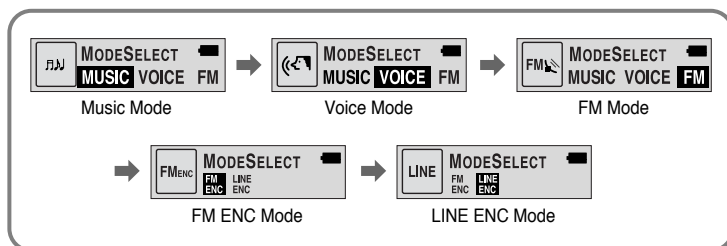
Slide the switch on the player in the direction of the arrow.

- When a button is pressed, " HOLD!" message will appear on the display.



## Changing Modes

- 1 Press the **MENU** button briefly while the player is stopped.
- 2 Move to the mode you want by using the **-**, **+** buttons, and then press the **MENU** button.

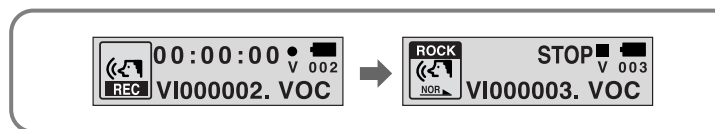


### Note :

- You will exit from the Mode Switching function if no action is taken for 5 seconds or if another button is pressed during mode switching.

## Recording Voice

- 1 Press the **REC** button to start voice recording while the player is stopped.
- 2 If the **REC** button is pressed again, the recording is stopped and the voice file is saved.
  - If the **PAUSE** button is pressed, the recording is paused and if the **PAUSE** button is pressed again, the recording resumes.

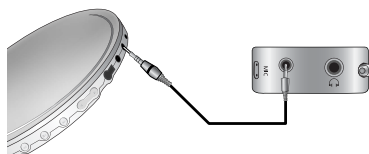





### Note :


- Recording is performed in order (VI000001, VI000002, etc.) and files are saved in the VOC format after recording.
- If the Memory is full, voice recording is stopped automatically.
- During voice recording, there is no beeping sound and the button lights and backlight do not illuminate.
- Voice Recording does not work in FM Mode or when the Line cable is connected.

# Encoding MP3s

- 1** Connect the Audio Output port on the external audio source (or the Line Out port) to the ENC port on the device with the Line in cable.



- 2** If the  button is pressed, MP3 encoding begins.
- If the  button is pressed, encoding is paused and if the  button is pressed again, the encoding resumes.

- 3** If the  button is pressed during encoding, the encoding stops and an encoding file is created.

- Encoding is performed in order (ENC000001, ENC000002, etc.) and files are saved in the MP3 format after encoding.

## Note :


- The bit rate can be set to 64Kbps, 96Kbps and 128Kbps.
- During encoding, there is no beeping sound and the button lights and backlight do not illuminate.

## Notice :



- Do not disconnect the Line cable during Encoding.
- If the battery is not charged enough, encoding will not be done.
- Adjust the volume of the external audio source to a suitable level and encode it. If the volume level is extremely high, the sound quality may not be good.

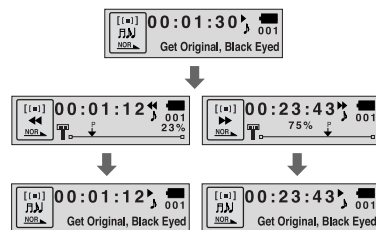
# Searching for Music/Voice Files

## Note :




- VBR(Variable Bit Rate) file: MP3 file whose compression rate changes when played.
- With VBR files, pressing the  button within 5 seconds. From the start of the track may not result in the previous track playing.
- This player may not play back MPEG1 LAYER1 files.

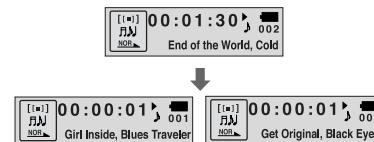
## To search for specific parts during play :

- A desired part can be searched for by pressing and holding down the ,  buttons during play.





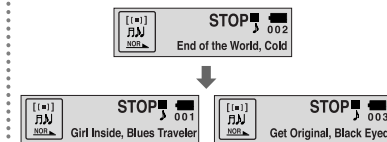
## To change tracks during play:

- If the  button is pressed during play, the next track is played.
- If the  button is pressed before five seconds have passed since starting to play a track, the previous track is played and if the  is pressed after five seconds, the current track is replayed from the beginning.



## To change tracks when stopped:

- If the ,  buttons are pressed when stopped, the yepp moves to the previous or next track, respectively.

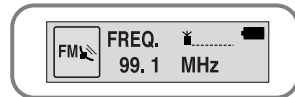


# Listening to FM Radio

While the player is stopped, select FM Mode by using the **MENU** button.

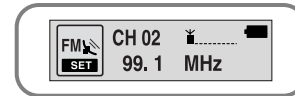
## Manual Search for a Frequency

- Press the **◀**, **▶** buttons to search manually for the desired frequency.



## Manual Storage of a Frequency

- After searching manually for a desired frequency, press the **SRS** button to select the channel in which to save the frequency.
- When the CH channel flashes, press the **▶ II** button to save the selected frequency.

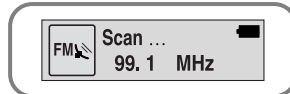


### Note :

- To exit from FM Mode, press the **MENU** button.

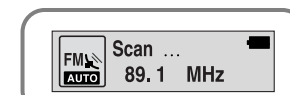
## Automatic Search for a Frequency

- Press and hold the **◀**, **▶** buttons in order to search for and stop at frequencies for which there is reception.



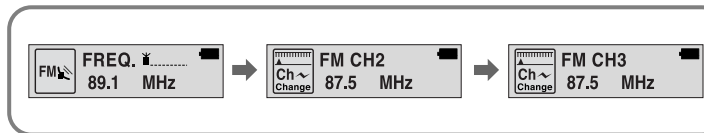
## Automatic Storage of a Frequency

- Press and hold the **SRS** button while in FM Mode.
- Frequencies within the range of 87.5MHz to 108MHz are automatically selected and stored.
- Frequencies are automatically stored, starting from 1.



## Searching Stored Frequencies

- 1 Press and hold the **MENU** button in FM mode.
- 2 Press the **MENU** button after using the **-**, **+** buttons to move to the desired channel.

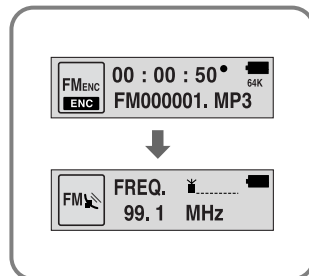


### Note :

- You can store up to 20 frequencies.
- You can replace an existing frequency with a new one but you cannot delete a stored frequency.

## Encoding From FM Radio

- 1 Press the **REC** button during FM reception.
  - Encoding of the currently transmitted FM broadcast begins.
- 2 Press the **REC** button again.
  - A file is created and the encoding stops.
  - Files are saved in order of F000001, F000002...and stop automatically when the memory is full.



### Note :

- During encoding, there is no beeping sound and the button lights and back light do not illuminate.
- Encoded file will become 64Kbps file after it is encoded to FM.

## Loop Repeating

### Starting Point

While playing music files, press the **MENU** button briefly at the beginning of the loop you want to set.

**A B** appears in the display.



### Ending Point

Press the **MENU** button briefly again to set the end of the loop.

**A B** appears in the display.  
The loop is played repeatedly.

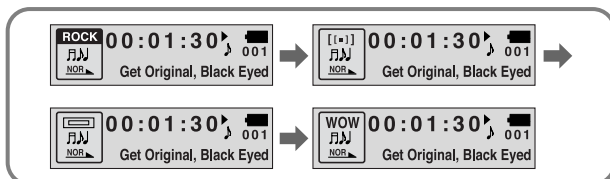


### Note :

- Press the **MENU** button briefly to cancel the loop.
- Loop Repeat is automatically released if you Speed Search with the **←**, **→** buttons.

## Setting SRS

Press the **SRS** button in Music mode to select the desired SRS mode.



- **SRS** (Speaker icon): You will hear 3D Stereo sound.
- **TRUBASS** (Bass icon): This is a bass boost feature that adds fullness to the sound.
- **WOW**: This feature allows you to enjoy the SRS and Trubass features simultaneously.

### Note :

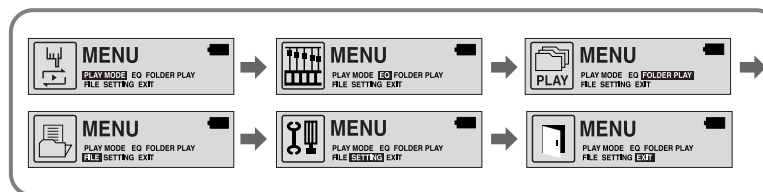
- Please adjust the volume to a suitable level, as the volume may increase in the SRS setting.
- This unit supports sampling frequencies of 32KHz, 44.1KHz or 48KHz.
- You can set SRS functions only in Music Mode. (Except for 2xMP3 files)
- When not in folder playback mode, press and hold **SRS** to skip the next 10 songs.

Example) To move to Track 42 while Track 15 is being played, press and hold the **SRS** button three times and then press the **Next** button twice.

15 → 20 → 30 → 40 → 41 → 42

## MENU Mode

To switch to Menu Mode, press and hold the **MENU** button while in Music/Voice Mode. After moving with the **-**, **+** buttons, press the **MENU** button to select the desired menu. Menu mode is cancelled if the **Pause** button is pressed.



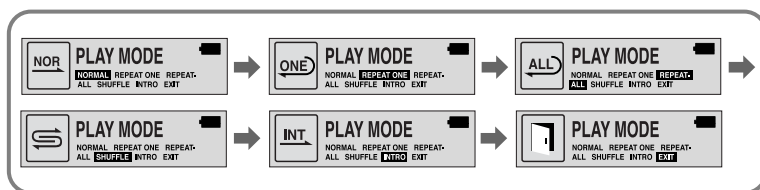
- **PLAY MODE** : To select track repeating mode.
- **EQ** : To select the desired music tones.
- **FOLDER PLAY** : To play only the music in the selected folder.
- **FILE** : To delete or format music files.
- **SETTING** : To change the advanced yepp functions.
- **EXIT** : To exit MENU.

### Note :

- In MENU mode, no input for 30 seconds will cancel the MENU mode.

## Selecting the Play mode

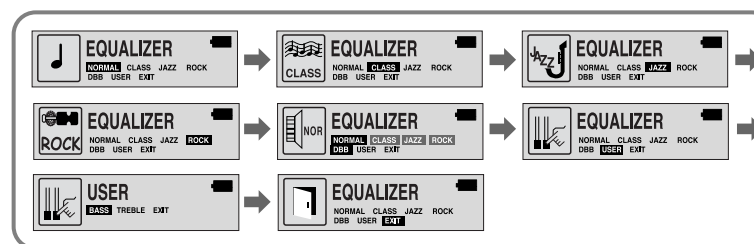
- 1 Select PLAY MODE in the MENU. (refer to "MENU Mode")
- 2 Use the  $\ominus$ ,  $\oplus$  buttons to move to the mode you want and press the **MENU** button to select.



- **NORMAL** : To play all the tracks in order one time.
- **REPEAT ONE** : To repeat one track.
- **REPEAT ALL** : To repeat all tracks.
- **SHUFFLE** : To play tracks at random.
- **INTRO** : To play the first 10 seconds of each track.
- **EXIT** : To move to the upper menu.

## Selecting the EQ mode

- 1 Select EQUALIZER in the MENU. (refer to "MENU Mode")
- 2 Use the  $\ominus$ ,  $\oplus$  buttons to move to the setting you want (out of the 4 settings) and press the **MENU** button to select.
  - Select the DBB Mode if you want to fine-tune the sound.
- 3 If you want to manually adjust the equalizer, select User and Bass/Treble.
  - Bass and treble can each be adjusted from 0 to 10.








### Note :

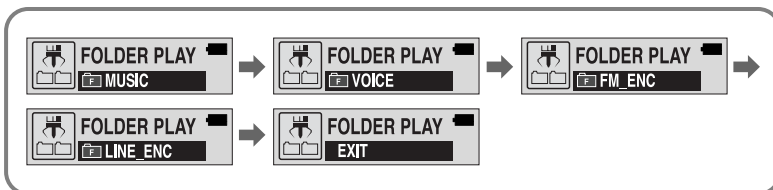
- DBB is for Dynamic Bass Booster, which enhances bass response.




## Selecting the Play Folder

- 1 Select Folder Play in the MENU. (refer to "MENU Mode")
  -  : This signifies the root folder; the files in the folder are played if the Menu button is pressed.
  -  : This signifies the sub-folders of the Music folder; only the files in the selected sub-folder are played when the Menu button is pressed.

- 2 Use the ,  buttons to move to the desired folder and press the  button to select.
  - Only the files in the selected folder are played.




### Note :

- You can only create sub-folders in the Music folder and folder creation is only possible in yepp Studio.
- You can move to the next folder by pressing and holding down the  button when playing a folder.

## Managing Files

### Deleting

- 1 Select FILE in the MENU. (refer to "MENU Mode")
- 2 Select DELETE and then move to the file you wish to delete.
  - If GO UP is selected, files in other folders can also be selected.
- 3 Select YES in the Delete Confirm Window after pressing the  button.
  - The selected file is deleted.



Continued...

# Setting Advanced Functions

## Formatting

- 1 Select FILE in the MENU. (refer to "MENU Mode")
- 2 Select FORMAT.
  - Formatting is performed if CONFIRM is selected.

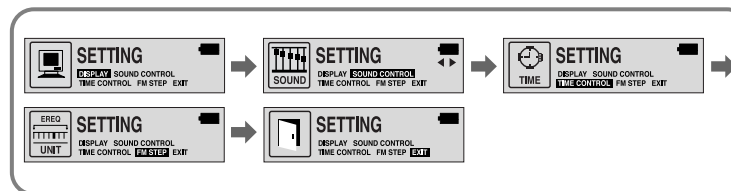


### Note :

- All files are deleted if yepp is fomatted.

- 1 Select SETTING in the MENU. (refer to "MENU Mode")

- 2 Use the  $\ominus$ ,  $\oplus$  buttons to move to the function you want to change and select the function by using the **MENU** button.



Continued...

# DISPLAY

Select DISPLAY in the MENU.

## INFORMATION

- Use the  $\ominus$ ,  $\oplus$  buttons to select the music mode and select the content to be displayed at the top of the Screen Display Window.
- Play time: Displays the current play time
- Remain time: Displays the remaining play time
- Free memory: Displays the remaining memory
- Bit rate: Displays the wave bit rate that is being played



## BACK LIGHT

- Use the  $\ominus$ ,  $\oplus$  buttons to set the Backlight "ON" time.
- The setting range of Backlight-On Time is 0 to 30 seconds.
- When set to Always On, the backlight stays on continuously.



### Note :

- The backlight does not illuminate when the residual battery level is insufficient.

## CONTRAST

- Use the  $\ominus$ ,  $\oplus$  buttons to set the Contrast.
- The setting range of the contrast, which adjusts the brightness of the screen, is 0 to 20.



## SCROLL SPEED

- Use the  $\ominus$ ,  $\oplus$  buttons to set the Scroll Speed.
- The setting range of the scroll speed, which adjusts the speed of the track title flow, is 0 to 10.

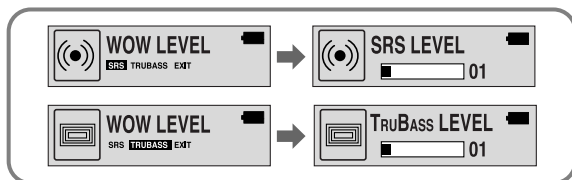


# SOUND CONTROL

Select SOUND CONTROL in the MENU.

## WOW LEVEL

- The levels of SRS and TRUBASS can be adjusted.
  - Use the  $\ominus$ ,  $\oplus$  buttons to select the level you want.
- \*The level for SRS and TRUBASS can each be set within the range of 0 to 10.



## OPTIMIZATION

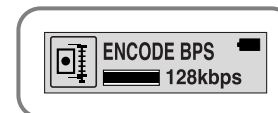
- Optimizes the SRS function to the device that's connected.
- Set the desired device to earphone, headphone, speaker or carpack by using the  $\ominus$ ,  $\oplus$  buttons.



54

## ENCODE BIT RATE

- Use the  $\ominus$ ,  $\oplus$  buttons to sel the desired MP3 encoding bit rate.
- You can set the desired bit rate to 64kbps, 96kbps or 128kbps when doing MP3 encoding.



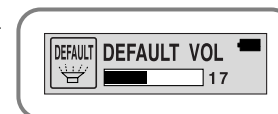
## BEEP ON/OFF

- Use the  $\ominus$ ,  $\oplus$  buttons to set the BEEP mode.
- BEEP ON: A beep sounds each time a button is pressed.
- BEEP OFF: No beep sounds when a button is pressed.



## DEFAULT VOLUME

- Use the  $\ominus$ ,  $\oplus$  buttons to set the DEFAULT VOLUME.
- It is possible to set the default volume to a value between 0 and 40. If the power is turned on again after having adjusted the volume above the default value, music is played at the default volume.
- If the power is turned on again after the volume was set to within the default value, the music is replayed at the previously played volume.



55

## TIME CONTROL

Select TIME CONTROL in the Menu.

### INTRO TIME

- Use the  $\ominus$ ,  $\oplus$  buttons to set the INTRO TIME.
- The intro play time can be set from 10 to 50 seconds.  
The first section of each track is played for the set time.



### POWER OFF TIME

- Use the  $\ominus$ ,  $\oplus$  buttons to set the POWER OFF TIME.
- The power off time can be set from 3 to 180 seconds.  
After stopping playback, the power is turned off automatically if no buttons have been pressed during the set time.
- When set to No Power Off, the power does not turn off even when the device is stopped.



### SLEEP TIME

- Use the  $\ominus$ ,  $\oplus$  buttons to set the SLEEP TIME.
- The sleep time can be set from 3 to 180 minutes.  
The power turns off automatically after the set time has passed.



#### Note :

- When the device is turned off automatically, the power can be turned on again by pushing the power switch down to the Off position and then pushing it back up to the On position.

## Setting the FM Frequency Unit

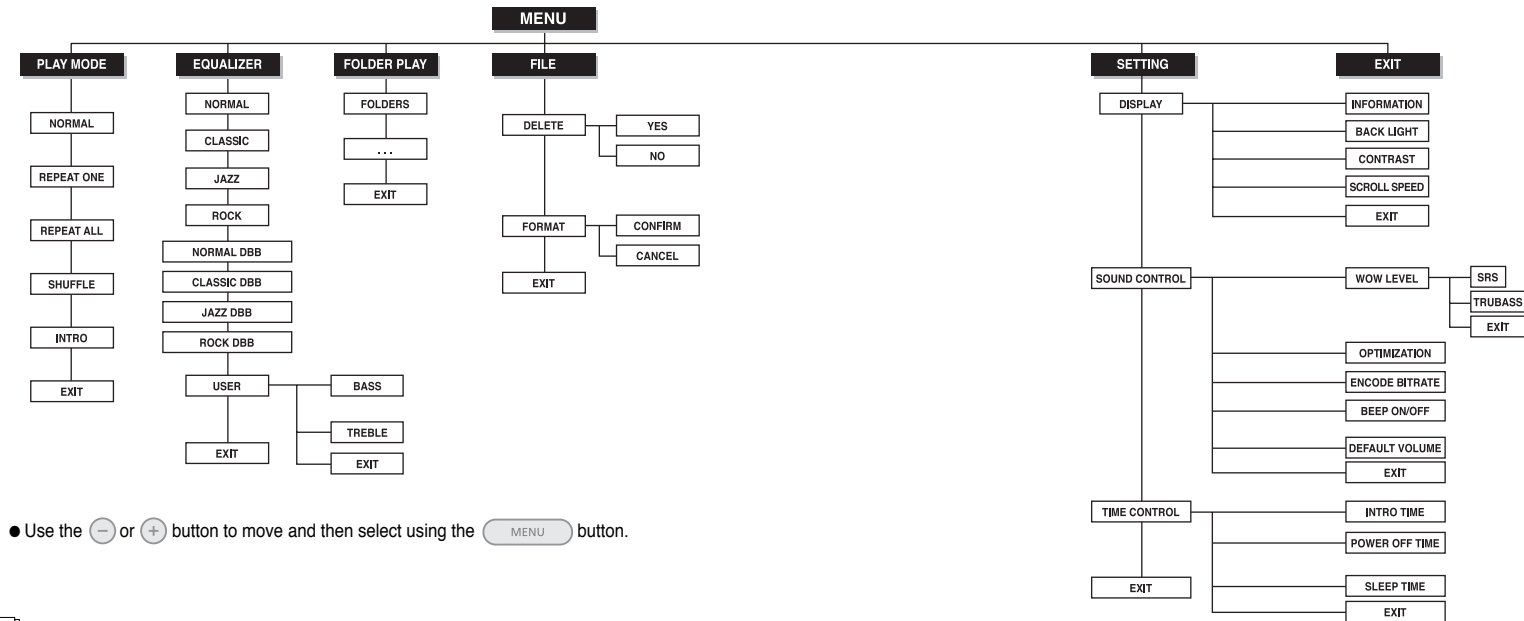
You can set the unit of frequency movement in FM mode.




1 Select FM STEP in the MENU.

2 Use the  $\ominus$ ,  $\oplus$  buttons to move FM step to 100KHz or 50KHz and press the  $\text{MENU}$  button to select.



# MENU Table



● Use the  or  button to move and then select using the  button.

# Troubleshooting

## The software doesn't work

- Refer to the recommended PC specifications.

## yepp does not work and the LCD displays nothing.

- Check the battery capacity
- Check to see if the battery is inserted to the right poles —, +

## In PLAY mode, music is not played after pressing the button

- Verify that the device is currently set to Music mode.
- Check to see if MP3 or WMA files are saved in the built-in memory.
- Check to see if the HOLD switch is locked.
- Check if the REC button is on.

## Files cannot be downloaded.

- Check to see if the driver is installed correctly in the computer.
- Check the connection between yepp and computer.
- Check and/or replace the battery, turn on the yepp's power.

## Backlight does not work.

- Check the backlight setup.
- When the battery power is low, the backlight will go out.

## The buttons do not work.

- Check setting of Hold switch.

## yepp keeps being turned off.

- In Stop mode, the power is automatically turned off after ten seconds (changes depending on settings).
- Check to see if there are files saved in it.

## Something's wrong with play time displayed during Play mode.

- "VBR SONG" message is displayed while VBR (Variable Bit Rate) file is playing.

## LCD window is dark

- Check Contrast

## Yepp doesn't work even though the power switch is set to On.

- Try pushing the power switch down to Off and then pushing it back up to On.

## Strange characters are displayed on the screen during playback.

- Change the font settings in the Download List Window to the correct font.

# Specifications

Model	YP-780
Built-in Memory capacity	1GB(YP-780 Z)/512MB(YP-780 X)/256MB(YP-780 V)/128MB(YP-780 H)
Voltage	1.5V x 2 (AAA/LR03 size alkaline battery)
Playing time	lasts up to 20hours (Alkaline battery, MP3 128Kbps, Vol level 30)
Dimensions/Weight	45 x 73 x 17.5mm/45g (without battery)
Case	Plastic/Aluminum
Noise Ratio	80dB with 20KHz LPF
Earphones Jack Output Power	6mW(Max 10mW)/CH (16 $\Omega$ )
Output Frequency Range	20Hz~20KHz
Operating Temperature Range	-5 ~ +35°C(23~95°F)
FM Frequency	87.5 ~ 108.0 MHz
FM Signal to Noise Ratio	45dB
FM T.H.D	1%
FM Useable Sensitivity	10dB
File Support	MPEG1/2/2.5 Layer3(8Kbps ~ 320Kbps, 8KHz ~ 48KHz) WMA (64Kbps ~ 192Kbps, 32KHz, 44.1KHz, 48KHz)



## Samsung Limited Warranty

Samsung Electronics Canada Inc. (SECA), warrants that this product is free from defective material and workmanship.

SECA further warrants that if this product fails to operate properly within the specified warranty period and the failure is due to improper workmanship or defective material SECA will repair or replace the product at its option.

All warranty repairs must be performed by a SECA authorized service centre. (The name and address of the location nearest you can be obtained by calling toll free 1-800-726-7864 or visiting our web site at [www.samsung.ca](http://www.samsung.ca))

Labour  
one (1) year (carry-in)

Parts  
one (1) year

On carry-in models, transportation to and from the service centre is the customer's responsibility.

The original dated sales receipt must be retained by the customer and is the only acceptable proof of purchase. It must be presented to the authorized service centre at the time service is requested.

### Exclusions

This warranty does not cover damage due to accident, fire flood and/or other acts of God; misuse, incorrect line voltage, improper installation, improper or unauthorized repairs, commercial use, or damage that occurs in shipping. Exterior and interior finish, lamps and glass are not covered under this warranty. Customer adjustments which are explained in the instruction manual are not covered under the terms of this warranty. This warranty will automatically be voided for any unit found with a missing or altered serial number. This warranty is valid only on products purchased and used in Canada.



