



Samsung Electronics America Inc.
105 Challenger Road, Ridgefield Park, N.J. 07660

SERVICE DIVISION
400 Valley Road, Suite 201
Mount Arlington, NJ 07856
TEL: 1-800-SAMSUNG (1-800-726-7864)

AH68-01616L(REV 0.0)

SAMSUNG

YP-ST5

DIGITAL AUDIO PLAYER

yepTM

- MP3,WMA,ASF,Secure WMA Playback
- Removable Storage Device
- Direct MP3 Recording
- FM Reception
- 3D Sound
- USB 2.0 Support
- Upgradable
- 20 Hours of Continuous Play
- Voice Recording Function

Contents

Contents

Preparations

Safety Instructions	4
Features	6
Components	8
Location of Controls	9

Connection to Computer

Connecting the player to PC	11
Manual Installation of USB Driver	15
Using the removable storage(PC)	18
● Downloading/Uploading files	18
● Disconnecting the USB cable	18
● Formatting	19
● Downloading Secure WMA Files	20
Installing yepp Studio	22
● To View Help on yepp Studio	23

Basic Usage

Playing Music and Turning Off the Device	24
Adjusting the Volume/Hold Function	25
Recording Voice	26
MP3 Encoding	27
Searching for Music/Voice Files	28
Listening to FM Radio	29
FM Encoding	30

Additional Usage

Loop Repeating	32
MENU options	33
Using Navigation	34
Setting Playlist	37
Setting the Advanced Functions	38
Selecting the Play mode	39
Setting the EQ mode	40
Managing Files	41
● Deleting	41
● Formatting	41
Display	42
● Scroll Speed	42
● Information	42
● Backlight	42
● Contrast	43
Time	44
● Auto Off / Sleep	44
REC Settings	45
● Bitrate / AutoSync Time	45
WOW Level	46
● Adjusting SRS and TruBass LEVEL	46
● WOW Optimum	46
Default Volume	46

Appendix

MENU Table	47
------------------	----


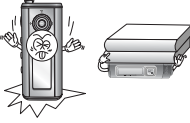



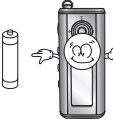
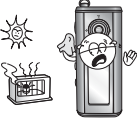


Customer Support

Troubleshooting	48
Specifications	50
Communications Regulation Information	52
Warranty	54

Safety Instructions

Safety Instructions

Read and understand all the instructions to avoid injury to yourself and damage to the equipment.

<p>Do not expose to extreme temperatures (above 95°F or below 23°F). Do not expose to moisture.</p> 	<p>Do not subject the unit to severe impact, or place heavy objects on it.</p> 	<p>Do not let any foreign matter spill into the device.</p> 
<p>Be careful not to subject the player to excessive pressure when wearing it round your neck.</p> 	<p>Do not expose to chemicals such as benzene and thinners.</p> 	<p>Remove batteries when the device is left unused for a long period of time.</p> 
<p>Do not expose to direct sunlight or heat sources.</p> 	<p>Do not store in dusty areas.</p> 	<p>Do not try to disassemble and repair the device yourself.</p> 

* Please be aware that we claim no responsibility for damage from data loss due to breakdown, repair or other causes.

Earphones

Follow Traffic Safety Instructions

- Do not use the earphones while driving an automobile or riding a bicycle. It's not only dangerous, but also against the law.
- It may cause an accident if you turn up the volume of the earphones while walking, especially when crossing intersections.

Protect your ears

- Do not turn up the volume too high. Doctors warn against prolonged exposure to high volume.
- Stop using the device or turn the volume down if you have ringing in your ears.

Ambient operating conditions

- Ambient temperature : 5°C ~ 35°C (41°F ~ 95°F)
Humidity : 10 ~ 75%

Environmental Information

- Follow local guidelines for waste disposal when discarding packages, batteries, and old electronic appliances.
- Your player is packaged with cardboard, polyethylene etc., and does not use any unnecessary materials.

Features

Features

MP3, WMA, ASF, Secure WMA Playback

- MP3 is an MPEG1 Layer3 audio format.
- WMA is a Microsoft Windows Media audio format.
- ASF is a file format used in Windows Media player.
This player can also play back ASF audio.

Removable Storage Device

- You can easily copy and paste files to the player using Windows Explorer.

Direct MP3 Recording

- You can convert music from CDs, cassettes, and radio into MP3 files without a PC.

FM Reception

- Listening to an FM program is made easy with Auto Search and Frequency Memory functions.

3D Sound

- The 3D surround feature adds spaciousness to the sound.

USB 2.0 Support

- Maximum data speed transfer of 18 Mbps.

Upgradable

- You can upgrade the built-in programs when available.
Add functions, CODEC, etc. Please check the home page (www.samsungusa.com) for upgrades.

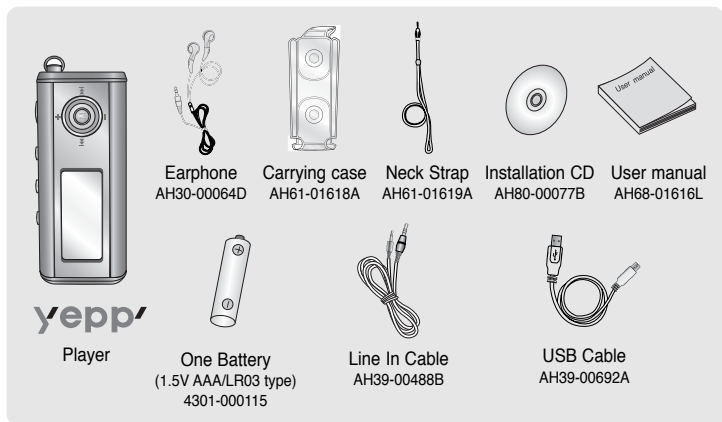
20 Hours of Continuous Play

- This player uses one AAA/LR03 alkaline battery. Operation can last up to 20hours.
Actual playing time may vary according to the type and capacity of the battery.

Voice Recording Function

- You can make high quality voice recordings.

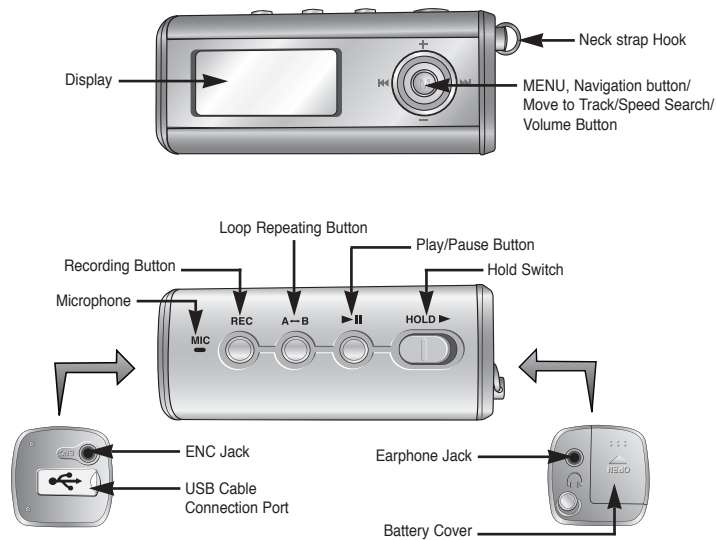
Components



Model	YP-ST5 X	YP-ST5 Z
Built-in memory	512MB	1GB

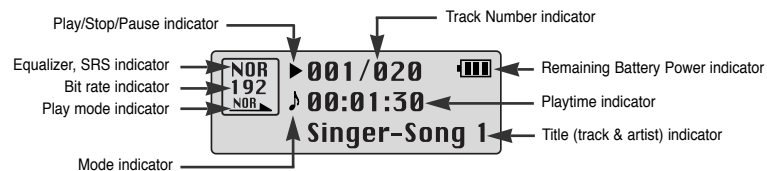
- The capacity of the useable built-in memory is less than indicated as the internal firmware uses a part of the memory as well.
- Design of accessories is subject to change for the purposes of improvement, without notice.

Location of Controls (yepp)



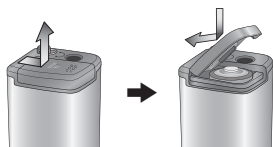
Location of Controls (yepp)

Display



Inserting a Battery

- 1 Slide the cover in the direction of the arrow to open.
- 2 Insert a AAA battery to the right poles +, - and push-close the cover in the direction of the arrow as indicated.



Note

- Do not place heavy objects on the cover.

Connecting yepp to PC

System Requirements.

The PC system must meet the following specifications:

- Pentium 133MHz or greater
- Windows 98 SE/ME/2000/XP
- Memory 128MB of RAM minimum
- 40MB of available hard disc space
- CD-ROM drive
- USB port (2.0) supported
- Monitor

Note

- Install the operating system in Administrator Account mode for Windows 2000 or XP. Otherwise, installation will not be completed.
- Windows ME, 2000 and XP can recognize the driver without installing the provided program. However, you must install the program in order to format yepp and upgrade firmware.
- If the YP-ST5 program has not been installed in Windows 98, then it will not communicate with your removable disc. You must install the USB driver file first.

Before connecting yepp to PC, make sure to install USB driver. If "Add New Hardware Wizard" appears, press the [Cancel] button and install the USB driver from the Installation CD.

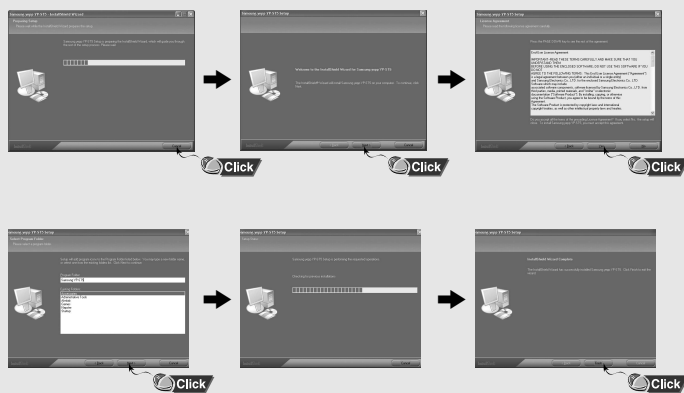
Installing software

- 1 Insert the Installation CD into the CD-ROM drive. Select [Install yepp USB Driver].



Connecting yepp to PC

2 Click [Next] in the series of windows that appear.



Connecting yepp to PC

1 Connecting yepp to PC with USB cable

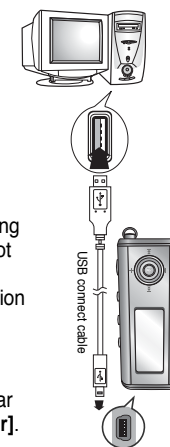
1 Connect the USB cable to the USB port on the computer.

2 Connect the other end of the USB cable to the USB cable connection port on the bottom of the player.

- If you disconnect the USB cable from your PC while implementing a command or initializing during USB driver installation, your PC may not function correctly.

3 The USB driver is installed with a message saying that it is searching for a new device. You may not see the display screen during installation. Go to the device manager to check that installation has been successfully completed.

4 Upon installation of the USB driver "Samsung yepp YP-ST5 USB Device" will appear in the [System Properties] → [Device Manager].



Connecting yepp to PC

Manual Installation of USB Driver

How to check if USB driver is installed correctly

Windows 98:

Control Panel → **System** → **Device Manager** → **Disk Drives** → **Samsung yepp YP-ST5**

Windows 2000:

Control Panel → **System** → **Hardware** → **Device Manager** → **Disc Drives** →

Samsung yepp YP-ST5 USB Device

Windows XP:

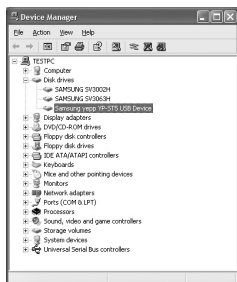
Control Panel → **System** → **Hardware** → **Device Manager** → **Universal Serial Bus controllers** →

Disk Drives → **Samsung yepp YP-ST5 USB Device**



Note

- Driver should appear as shown in the picture.



5 If the USB driver is not installed automatically, refer to the next page.

Go to "Downloading/Uploading files"(p18) if the USB driver is installed.

Follow these steps if the USB driver is not installed :

Installing software

1 Check the device manager.

Windows 98,ME:

Control Panel → **System** → **Device Manager**

Windows 2000:

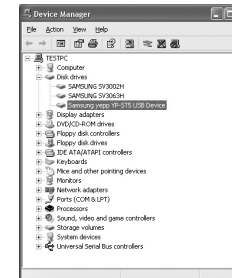
Control Panel → **System** → **Hardware** →

Device Manager

Windows XP:

Control Panel → **System** → **Hardware** →

Device Manager



2 Check if there is a device listed with an exclamation point or a question mark (displayed as unknown device or USB device).

3 Double click on the device listed with an exclamation point or a question mark.



Note

- If you are using Windows 2000 and your version of Windows does not recognize the USB driver please download and install the latest service pack from windowsupdate.microsoft.com
- The installation method may vary depending on the type of PC or operating system. Contact your PC dealer or service center for installation information.
- If errors occur continuously when you install the USB driver, reconnect the USB cable after rebooting your system.

Manual Installation of USB Driver

Manual Installation of USB Driver

4 After selecting the driver, click [Update Driver].



5 Click [Next].



6 Select [Search for a suitable driver for my device] and then click [Next].

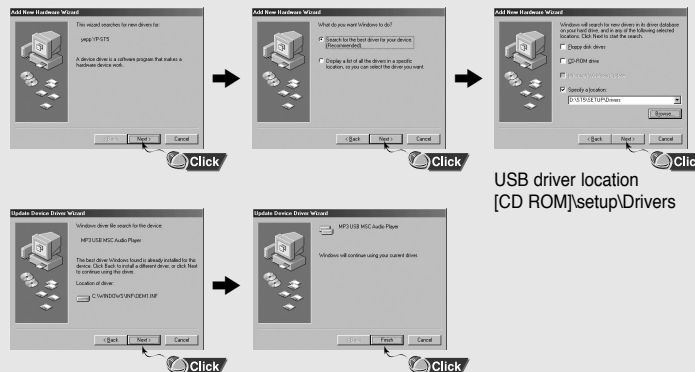


7 Click [Next] to finish.



In Windows 98

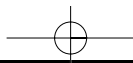
Click [Next] button in the series of windows that appear.



: You must reboot your computer to complete the installation.

Note

- You cannot use the yepp player as a removable disc in Windows 98 if the YP-ST5 program is not installed. Make sure to install the USB driver file first.

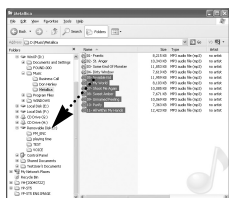


Using the removable storage(PC)

Using the removable storage(PC)

Downloading/Uploading files

- 1 Connect the player to your PC with the supplied USB cable.
- 2 Open Windows Explorer on PC.
 - Removable Disc is displayed in Windows Explorer.
- 3 Select the file to save and drag-and-drop it into the removable disc icon. (Files will appear in numerical, alphabetical order)



Notice

- The "WRITING/READING" message will appear during file download or upload. Disconnecting the USB cable while "WRITING/READING" is displayed may cause malfunction of the unit.
- The order of music files is not relative to the replay order when you select a Removable Disc in Windows Explorer.

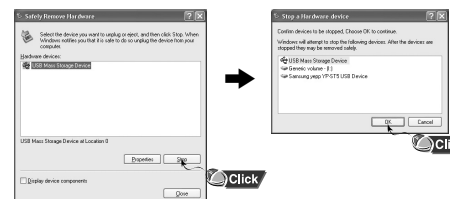
Disconnecting the USB cable

After completing the file transfer, you must disconnect the cable in the following way:

- 1 Double-click on the green arrow in the taskbar on the bottom right of the window.

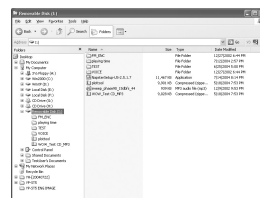


- 2 When the [Stop a Hardware device] message appears, press the [OK] button and disconnect the USB cable.



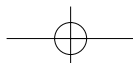
Formatting

- 1 Select the removable disc icon and click the right mouse button to select [Format].
- 2 Press the [Start] button.
 - All saved files will be formatted.
 - You can change the name of removable disc by selecting [Volume label].



Note

- By formatting, all previously preset menus will be initialized.
- Care must be taken as formatted files can not be recovered.



Using the removable storage(PC)

Using the removable storage(PC)

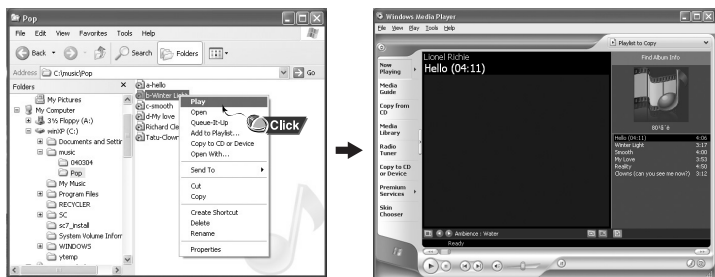
1 Downloading Secure WMA Files

Make sure to download the Secure WMA file you purchased from a *pay site through Windows Media Player Version 9 or higher.

*pay site :

www.walmart.com, www.buymusic.com, www.musicnow.com, www.napster.com, etc.

1 Select the Secure WMA file and right-click to select [Play] or [Play with Media Player].



2 Click [Copy to CD or Device] from the left menu.

The list of songs selected in step 1 will appear in the left window.

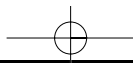
Click the down arrow under [Items on Device] in the right window to change it to [Removable Disk] and then press the **Copy** button on the upper part to download the selected file.



3 Make sure to use Media Player 9.0 or higher to play the Secure WMA files downloaded from the pay site.

Click the [Check for Player Updates] button in the Help menu to update the player to the latest version.

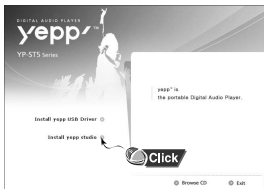




Installing yepp Studio

To View Help on yepp Studio

1 Insert the Installation CD into CD-ROM drive.
Select [Install yepp Studio].

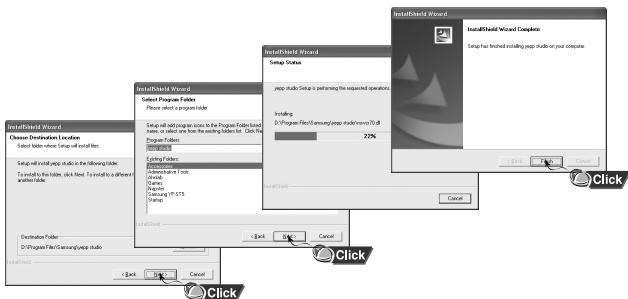


2 Select language



3 Click [Next] in the series of windows that appear.

● Please refer to Help for more information on how to use yepp Studio.

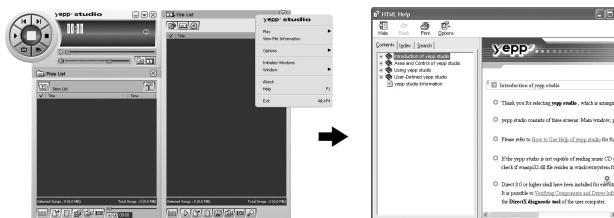


Run yepp Studio and press F1.

● Help will appear.

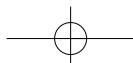
Move the arrow to the top of yepp Studio and right click on the mouse. The following selection window will appear.

● Click on Help and the Help window will appear.



Note

- Music recognition technology and related data are provided by Gracenote and Gracenote CDDB® Music Recognition ServiceSM.
- CDDB is a registered trademark of Gracenote. The Gracenote logo and logotype, the Gracenote CDDB logo and logotype, and the "Powered by Gracenote CDDB" logo are trademarks of Gracenote. Music Recognition Service and MRS are service marks of Gracenote.



Playing Music and Turning Off the Device

Turning Power On and Off

Power On : Press the ►|| button to turn on the power.

Power Off : Press and hold the ►|| button to turn off the power.

Playing Music

Press the ►|| button.

- Playback starts automatically.



Pausing Music

Press the ►|| button to pause playback.

- If no buttons are pressed within 10 seconds (or custom settings), the player automatically powers off.
- While in Pause mode, press the ►|| button again to resume playback.



Note

- WMA files can only be played as music files with a compression rate of 48Kbps-192Kbps.
- The power off time can be set in the menu. (refer to page 44)

Adjusting the Volume/Hold Function


Adjusting the Volume

Press the joystick up or down to adjust the volume from level 00 to 30.



HOLD Function

In Hold mode, all buttons are disabled.

Slide the  switch in the direction of the arrow.

- ⚙ When the button is pressed, the "🔒 HOLD!" message will appear on the display.



Recording Voice

* To move to other modes from the Voice mode, refer to page 33 "Changing Mode"

1 Press and hold the REC button to start voice recording.

2 Press the REC button again to stop the recording and save the voice file.



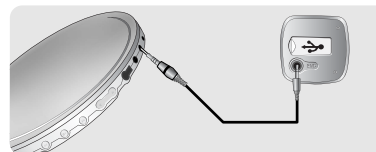
Note

- The files are recorded in the order of V001, V002....., and saved as WAV file in the VOICE folder after recording.
- If the Memory is full, Voice Recording will be disabled automatically.
- Voice Recording does not work in FM Mode or when the Line In cable is connected.

MP3 Encoding

* To move to other modes from the LINE_ENC mode, refer to page 33 "Changing Mode"

1 Connect the Audio Output port on the external audio source (or the Line Out port) to the ENC port on the device with the Line cable.



2 Press and hold the REC button to start MP3 encoding.

3 If the REC button is pressed during encoding, the encoding stops and an encoding file is created.

- The files are encoded in the order of L001, L002.... and saved as MP3 file in LINE_ENC folder after encoding.

Note

- Bit Rates can be set within the range of 32Kbps~128Kbps.
- Volume can be adjusted while monitoring the Encoding.

Note

- Do not disconnect the Line cable during Encoding.
- If the battery is not sufficiently charged, the player will not completely encode the file.
- Adjust the volume of the external audio source to a suitable level and encode it. If the volume level is too high, the sound quality may be poor.

Searching for Music/Voice Files

► To search for specific parts during play

- Press and hold the joystick left or right during playback to search for the part you want to listen to.
- Release the joystick to resume play normally.

► To change tracks during play

- Press the joystick to the ►► position briefly during playback to play the next track.
- Press the joystick to the ◀◀ position briefly within 5 seconds after playback starts, to move to and play the previous track. Press the joystick to the ◀◀ position briefly after five seconds to play the current track from the beginning.

► To change tracks when stopped

- Press the joystick left or right in stop mode to move to the previous/next track.

Note

- VBR(Variable Bit Rate) file: A file that constantly changes the compression rate according to the type of sounds, such as their pitch, in the file.
- When playing a VBR file, you cannot move to and play the previous track even if you push the ◀◀ key within 5 seconds after playback starts.
- Files that were downloaded in MP2 or MP1 and had their file extension changed to MP3 may not play.

Listening to FM Radio

Press the "M" button to display the menu screen.

Press the joystick down to select FM Radio and press the "M" button again.

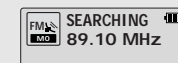
Manual Search for a Frequency

- Press the joystick left or right briefly to search manually for the frequency you want.



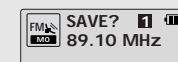
Automatic Search for a Frequency

- Press and hold the joystick left or right to search for and stop at frequencies with reception.



Manual Storage of a Frequency

- After searching manually for the frequency you want, press and hold the "M" button in the center to display the Save screen.
- Use ◀◀, ►► to select the number you want to assign to save the frequency and then press the "M" button.



Automatic Storage of a Frequency

- Press and hold the A↔B button while in FM Mode.
- Frequencies within the range of 87.5MHz to 108.0MHz are automatically selected and stored.
- Frequencies are automatically stored, starting from 1.



Number of channels saved.

Note

- To exit from FM Mode press the "M" button in the center.
- Mono (MO) or Stereo (ST) is automatically selected.
- Up to 20 frequencies can be stored.

Listening to FM Radio

FM Encoding

Searching Stored Frequencies

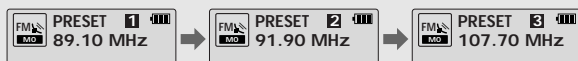
1 Press the **▶||** button in FM Mode.

- PRESET screen will appear.

2 Use **◀▶** to move to the frequency you want.

Note

- You can store up to 20 frequencies.
- Press the **▶||** button in the PRESET screen to exit the PRESET mode.



Deleting Stored Frequencies

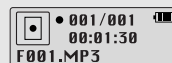
- After moving to the PRESET number you want to delete, press and hold the "M" button.

- The saved PRESET number will be deleted.



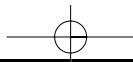
1 Press and hold the REC button during FM reception.

- Encoding of the currently transmitted FM broadcast begins.



2 Press the REC button again.

- A file is created and the encoding stops.
- Files are encoded in the order F001, F002, F003...and saved as MP3 files in FM_ENC folder.



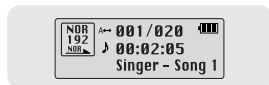
Loop Repeating

MENU options

Starting Point

While playing music files, press the A↔B button briefly at the beginning of the loop you want to set.

A↔ appears in the display.



Ending Point

Press the A↔B button briefly again to set the end of the loop.

A↔B appears in the display.

The loop is played repeatedly.



Note

- Press the A↔B button briefly to cancel the loop.
- Loop Repeat is automatically released if you Speed Search with ⏮, ⏭.

Press the "M" button to switch to MENU mode.

Use **←**, **→** to move and press the "M" button briefly to select the menu you want.

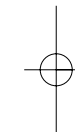
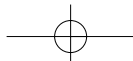
Press and hold the "M" button to exit the MENU mode.



- Now playing : To check the file currently playing.
- Navigation : To move to Navigation Mode
- FM Radio : To listen to FM radio
- Playlist : To play back only the files you want
- Settings : To set the yepp functions (Refer to page 36).
- Exit : To exit MENU

Note

- Menu mode will be cancelled if no buttons are pressed within 15 seconds








Using Navigation

You can easily search for files or switch modes using the Navigation function.

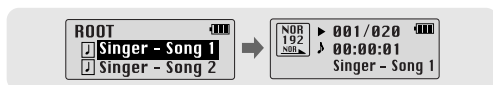
1 Press and hold the "M" button to enter Navigation mode (except if you are in FM radio mode).
or press the "M" button to move to Menu and then select Navigation in Menu.

2 Select the file or folder that you want to play.

- : When moving to a higher-level folder.
- : When moving to a lower-level folder.
- : When moving to a file or folder in the same directory.
- : Move to the next folder down. When there is not a lower folder, the selected file will be designated as part of the playlist.

3 Press the  button.

- The selected file will be played.



Note

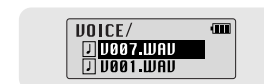
- Press and hold the "M" button in Navigation mode to exit the Navigation mode.


Using Navigation

Changing Mode


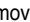
You can change the mode in the following method.
Ex) To change from the Voice mode to the Music mode

1 Press and hold the "M" button in the Voice mode.

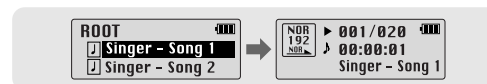


2 Use  to move to the upper folder.



3 Use  to move to the music file you want and press the  button.

- As it is changed to the Music mode, the selected file will be played.



Note

- To change to the FM mode, refer to "Setting up Menu".

Using Navigation


Setting Playlist

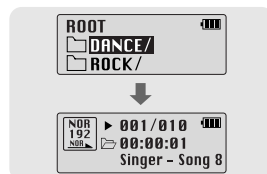
Playing/Exiting Folder

▶ Playing Folder

1 Press and hold the "M" button to move to the Navigation mode.

2 Use **-**, **+** to move to the folder you want and press the **▶||** button.


- When "  " appears, the selected file will be played.

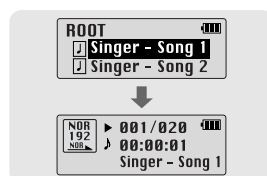


▶ Exiting Folder Play

1 Press and hold the "M" button during folder playback to move to the Navigation mode.

2 Use **-**, **+** to move to the file you want and press the **▶||** button.

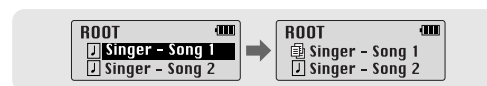
- After folder play is released, "  " mark will appear and the selected file will be played.



Setting Playlist

- Move to the file you want in Navigation mode and press the "M" button.

- The selected file will be marked.
- To exit the playlist setting, move to the marked file in Navigation mode and press the "M" button again.



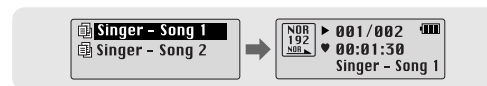
Playing Playlist

1 Press and hold the A↔B button in music mode or select Playlist in Menu.

- The playlist you set will be displayed.

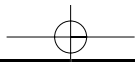
2 Move to the file you want to play and press the **▶||** button.

- "♥" mark appears and the selected file will be played.



Note

- Select PLAYLIST in File Delete (see "Deleting", p41) to release the playlist you set.

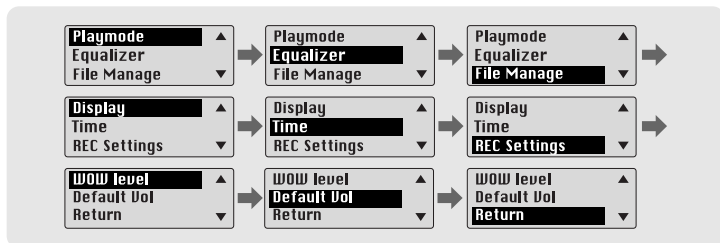


Setting the Advanced Functions

1 Select Settings in the MENU. (refer to "MENU Options")

2 In Settings, use **-**, **+** to move to the function you want and press the "M" button to select.

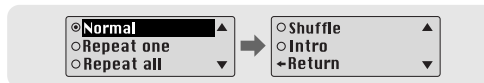
- To move to a previous menu, use **◀** or select Return.



Selecting the Playmode

1 Press the "M" Button. Select Settings → Playmode

2 In Playmode, use **-**, **+** to move to the mode you want and press the "M" button to select.

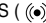
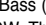


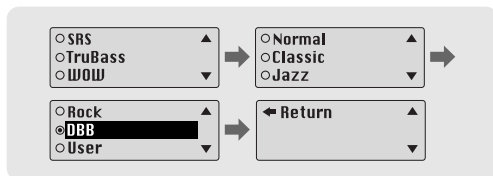
- Normal: To play all the tracks in order one time.
- Repeat one: To repeat one track.
- Repeat all: To repeat all tracks.
- Shuffle: To play tracks at random.
- Intro: To listen to the first part of all saved tracks for 10 seconds.
- Return: To move to a previous menu

Setting the EQ mode

1 Press the "M" button. Select Settings → Equalizer.

2 In Equalizer, use **-**, **+** to move to the sound mode you want and press the "M" button.


- SRS (): You will hear 3D Stereo sound.
- TruBass (): This is a bass boost feature that adds fullness to the sound.
- WOW: This feature allows you to enjoy the SRS and Trubass features simultaneously.
- If you want bass boost, select DBB.



3 Select User and set the Bass/Treble as desired.

- Bass/Treble can be adjusted from 0 to 10 with **-**, **+**.

Note

- SRS  is a trademark of SRS Labs, Inc. WOW technology is incorporated under license from SRS labs, Inc..
- Please adjust the volume to a suitable level, as the volume may increase in the SRS setting.
- This unit supports sampling frequencies of 32KHz, 44.1KHz or 48KHz.
- The SRS function is not set for voice recording files.

Managing Files

Deleting

1 Press the "M" button. Select Settings → File Manage → File Delete.

2 Select the file mode.

3 Use **-**, **+** to move to the file you want to delete, press the "M" button and select CONFIRM. Use **⏪** to exit the setting.

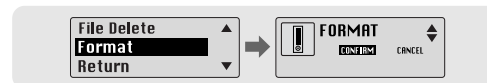


Formatting

1 Press the "M" button. Select → Settings → File Manage → Format.

2 Select CONFIRM in Format.

- Formatting is performed if CONFIRM is selected.



Note

- All files will be deleted when formatting the built-in memory.
- It is recommended that formatting be carried out on a PC that has the provided program installed as formatting in the Menu may take a long time.

Display

Display

Press the "M" button. Select Settings → Display → Scroll

▶ Scroll Speed

- Use **-**, **+** to set the scroll speed from level 0 to 10 to adjust the speed of the track title movement.



Press the "M" button. Select Settings → Display


▶ Information

- Play time: Indicates current play time
- Remain time: Indicates remaining play time
- Used size: Indicates used memory
- Free size: Indicates remaining memory



▶ Backlight

[Light Time - Jog]

- Use **-**, **+** to set the  Light-On time from 0 to 10 seconds.
- When set to On, the Light stays on continuously.



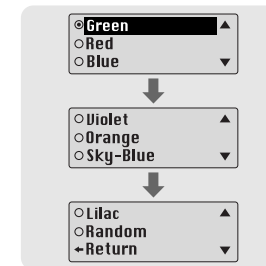
[Light Time - LCD]

- Use **-**, **+** to set the LCD Light-Off time from 0 to 10 seconds.
- When set to On, the Light stays on continuously.



[LCD color]

- Use **-**, **+** to select the LCD backlight color



Note

- The light does not illuminate when the residual battery level is low.

▶ Contrast

- Use **-**, **+** to set the contrast level from 0 to 10.



Time

REC Settings

Press the "M" button. Select Settings → Time.

▶ Auto Off

- Use **-**, **+** to set the Power-Off time from 0 to 1 minute.
- If no button is pressed after play stops, the player will automatically turn off after the time you set.
- If you set it to OFF, it will not turn off automatically.



▶ Sleep

- Use **-**, **+** to set the Sleep time to 15, 30, 60, 90 or 120 minutes. The player will turn off automatically after the time you set is reached.
- When set to OFF, it does not turn off automatically.



Press the "M" button. Select Settings → REC Settings.

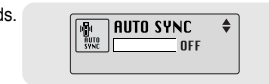
▶ Bitrate

- Use **-**, **+** to set the encoding bit rate.
- When encoding music into an MP3 file, you can select one of the following bit rates: 32Kbps, 48Kbps, 64Kbps, 96Kbps and 128Kbps.



▶ AutoSync Time

- Use **-**, **+** to set the AutoSync Time from 1 to 5 seconds.
- AutoSync Time is a function for separating and saving MP3 files when there is no sound for a set time during MP3 encoding.
- Autosync allows you to set the time no audio is present before recording is stopped and the file is saved.
- If AutoSync Time is set to OFF, encoding keeps going even if there is no sound, and then it is saved as one file.



 Note

- Auto Sync function can support from 64Kbps to 128Kbps.

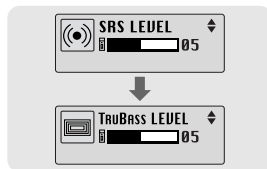
WOW Level

MENU Table

Press the "M" button. Select Settings → WOW level

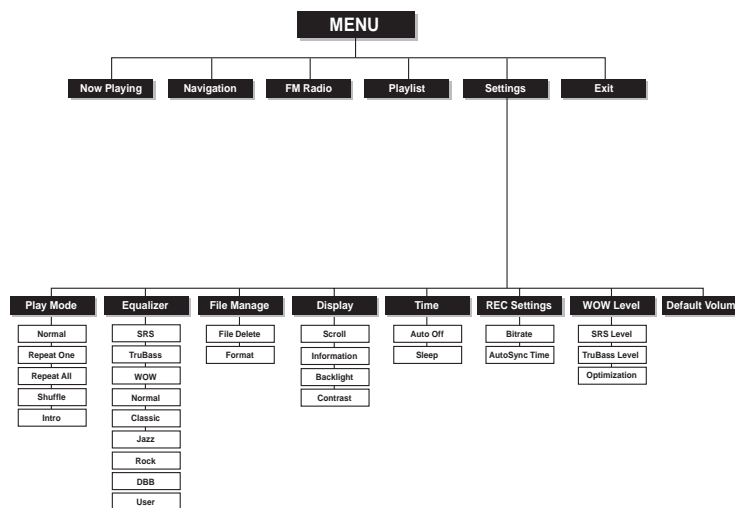
▶ Adjusting SRS and TruBass LEVEL

- If you select SRS or TruBass in the WOW level menu, you can adjust the SRS and TruBass level.
- Use **-**, **+** set the SRS and TruBass level between 0 and 10



▶ Optimization

- If you select Optimization, it optimizes the SRS function according to the device connected.
- Use **-**, **+** to select Speaker, Headphone, Earphone or Carpack(car cassette adapter).



Default Volume

Press the "M" button. Select Settings → Default vol

- Use **-**, **+** to set the default volume to a level between 0 and 30.
- If the power is turned on again after having adjusted the volume to a level above the default volume (for example: 20) music is played at the default volume level.
- If the power is turned on again after having adjusted the volume at or below the default volume (for example: 20 or lower), the music is replayed at the previous volume.



- Use the button to move and select.

Troubleshooting

The software doesn't work

- Refer to the System Requirements

The player does not work and the LCD displays nothing.

- Check the battery capacity
- Check to see if the battery is inserted properly
- After connecting it to PC, execute YP-ST5 Updater in the desktop to update the product.

In PLAY mode, music is not played after pressing the ►|| button

- Check to see if MP3 or WMA files are saved in the built-in memory.
- Check to see if the HOLD button is locked.

Files cannot be downloaded.

- Check to see if the driver is installed correctly in the computer.
- Check the connection between the player and PC.
- Check and/or replace the battery, turn on the player's power.
- Operating system limits the number of files you can save.
Please save your music files by creating a subfolder.
- Check if the memory is full.

The Backlight does not work.

- Check the backlight setup.
- When the battery power is low, the backlight will go out.

The buttons do not work.

- Check setting of Hold switch.
- Remove the battery once and then insert it again.

Troubleshooting

The player turns off repeatedly

- In Stop mode, the power is automatically turned off after ten seconds (changes depending on settings).
- Check to see if there are files saved in it.

Something's wrong with the play time displayed during Play mode.

- "VBR SONG" message is displayed while VBR (Variable Bit Rate) file is playing.

The LCD window is dark

- Check Contrast

There is a file saved in yepp, but "No File" appears in the screen.

- After checking whether the folder is played, use the Navigation function to change the folder.
- After connecting it to PC, execute YP-ST5 Updater in the desktop to update the product.

I cannot properly connect to my PC.

- Win98 : try to connect again after installing yepp Driver.
- WinME : remove the yepp Driver program and press the Start in the desktop to execute Windows Update. After selecting important update and service pack, execute update all.
- Win2000/XP : Try to connect it again after rebooting PC.

Specifications

MEMO

Model	YP-ST5
Built-in Memory capacity	256MB(YP-ST5 V), 512MB(YP-ST5 X), 1GB(YP-ST5 Z)
Voltage	1.5V X 1 (AAA/LR03 size alkaline battery)
Playing time	lasts up to 20hours (Alkaline battery, MP3 128Kbps, Vol level 20)
Dimensions/Weight	0.91X2.13X0.91 inch/0.85 oz (without battery)
Case	Plastic/Aluminum
Noise Ratio	89dB with 20KHz LPF
Earphones Jack Output Power	10mW/CH (16Ω)
Output Frequency Range	20Hz~20KHz
Operating Temperature Range	-5 ~ +35°C(23~95°F)
FM Frequency	87.5 ~ 108.0 MHz
FM Signal to Noise Ratio	45dB
FM T.H.D	1%
FM Useable Sensitivity	10dB
File Support	MPEG1/2/2.5 Layer3(8Kbps ~ 320Kbps, 8KHz ~ 48KHz) WMA, ASF (8Kbps ~ 192Kbps, 8KHz ~ 48KHz)

Communications Regulation Information

Communications Regulation Information

FCC

This device complies with part 15 of the FCC Rules. Operation is subject to the following two conditions: (1) This device may not cause harmful interference, and (2) this device must accept any interference received, including interference that may cause undesired operation.

Caution: Any changes or modifications in construction of this device which are not expressly approved by the party responsible for compliance could void the user's authority to operate the equipment

Note: This equipment has been tested and found to comply with the limits for a Class B digital device, pursuant to part 15 of the FCC Rules. These limits are designed to provide reasonable protection against harmful interference in a residential installation. This equipment generates, uses and can radiate radio frequency energy and, if not installed and used in accordance with the instructions, may cause harmful interference to radio communications. However, there is no guarantee that interference will not occur in a particular installation.

If this equipment does cause harmful interference to radio or television reception, which can be determined by turning the equipment off and on, the user is encouraged to try to correct the interference by one or more of the following measures:

- Reorient or relocate the receiving antenna.
- Increase the separation between the equipment and receiver.
- Connect the equipment to an outlet on a circuit different from that to which the receiver is connected.
- Consult the dealer or an experienced radio/TV technician for help.

Modifications

Any changes or modifications not expressly approved by the grantee of this device could void the user's authority to operate the device.

Compliance

This product conforms to the following Council Directive:

- Directive 89/336/EEC, 92/31/EEC(EMC)

Declaration of Conformity

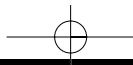
Name: Samsung Electronics Co., Ltd
 Address: 416, Maetan-3Dong, Paldal-Gu, Suwon City, Kyungki-Do, Korea 442-742
 declares under its sole responsibility that the product
 Trade Name: Samsung Electronics Co., Ltd
 Model Number: YP-ST5
 has been tested according to the FCC/CISPR22/95 requirements for Class B devices and found compliant with the following standards

EMI/EMC: AnSI C63.4 1992, FCC Part 15 Subpart B
 This device complies with part 15 of the FCC Rules. Operation is subject to the following two conditions:

1. This device may not cause harmful interference, and
2. This device must accept any interference received, including interference that may cause undesirable operation.

Party Responsible for Product Compliance

Samsung Electronics America
 QA Lab.
 3351 Michelson Dr. Suite #290
 Irvine, CA92612



Warranty

Warranty

Samsung warrants this product as free of defects in material, design and workmanship for a period of twelve(12) months from the original date of purchase.

If during the period of warranty this product proves defective under normal use and service, you should return the product to the retailer from whom it was originally purchased. The liability of Samsung and its appointed maintenance company is limited to the cost of repair and/or replacement of the unit under warranty. Return of the product for defective reasons should be to the original purchaser; however, Samsung Authorized Dealers and Authorized Service Centers will comply with the warranty on the terms issued to purchasers in the country concerned. For further information relating to the Authorized Service Centers contact; 1-800-SAMSUNG (1-800-726-7864) www.samsungyep.com

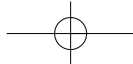
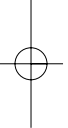
WARRANTY CONDITIONS:

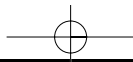
1. The warranty is only valid when the warranty card is properly completed, and upon presentation of the proof of purchase consisting of original invoice or sales slip confirmation, indicating the date of purchase, dealer's name, model, serial No. and product number.
2. Samsung reserves the right to refuse warranty service if this information has been removed or changed after the original purchase of the product from the dealer.
3. Samsung's obligations are to the repair of the defective part, and at its discretion, replacement of the product (service exchange unit).
4. Warranty repairs must be carried out by an Authorized Samsung Dealer/Service Center. No reimbursement will be made for repairs carried out by non Samsung Centers, and warranty coverage will not be valid for any repairs or damage caused by such repairs.
5. Repair or replacement under the terms of this warranty does not give right to extension to or a new starting of the period of warranty. Repair or direct replacement under the terms of this warranty may be fulfilled with functionally equivalent service exchange units.

5. The warranty is not applicable in cases other than defects in material, design and workmanship. The warranty does not cover the following:

- ◆ Periodic checks, maintenance, repair and replacement of parts due to normal wear and tear.
- ◆ Abuse or misuse, including but not solely limited to the failure to use this product for its normal purposed or in accordance with Samsung's instructions usage and maintenance.
- ◆ Use of the product in conjunction with accessories not approved by Samsung for use with this product.
- ◆ Failure of the product arising from incorrect installation or use not consistent with technical or safety standards in current force, or failure to comply with product manual instructions.
- ◆ Accidents, Acts of God or any cause beyond the control of Samsung caused by lightning, water, fire, public disturbances and improper ventilation.

- ◆ Unauthorized modifications carried out for the product to comply with local or national technical standards in countries for which the Samsung product was not originally designed.
- ◆ Repairs performed by non-authorized service centers such as opening of the product by a non-authorized person.
- ◆ The model, serial No. and product number on the product has been altered, deleted, removed or made illegible.
- 6. This warranty does not affect the consumer's statutory rights nor the consumers rights against the dealer from their purchase/sales agreement.





Warranty

Warranty

THERE ARE NO EXPRESS WARRANTIES OTHER THAN THOSE LISTED AND DESCRIBED ABOVE, AND NO WARRANTIES WHETHER EXPRESS OR IMPLIED, INCLUDING, BUT NOT LIMITED TO, ANY IMPLIED WARRANTIES OF MERCHANTABILITY OR FITNESS FOR A PARTICULAR PURPOSE, SHALL APPLY AFTER THE EXPRESS WARRANTY PERIODS STATED ABOVE, AND NO OTHER EXPRESS WARRANTY OR GUARANTY GIVEN BY ANY PERSON, FIRM OR CORPORATION WITH RESPECT TO THIS PRODUCT SHALL BE BINDING ON SAMSUNG, SAMSUNG SHALL NOT BE LIABLE FOR LOSS OF REVENUE OR PROFITS, FAILURE TO REALIZE SAVINGS OR OTHER BENEFITS, OR ANY OTHER SPECIAL, INCIDENTAL OR CONSEQUENTIAL DAMAGES CAUSED BY THE USE, MISUSE OR INABILITY TO USE THIS PRODUCT, REGARDLESS OF THE LEGAL THEORY ON WHICH THE CLAIM IS BASED, AND EVEN IF SAMSUNG HAS BEEN ADVISED OF THE POSSIBILITY OF SUCH DAMAGES. NOR SHALL RECOVERY OF ANY KIND AGAINST SAMSUNG BE GREATER IN AMOUNT THAN THE PURCHASE PRICE OF THE PRODUCT SOLD BY SAMSUNG AND CAUSING THE ALLEGED DAMAGE. WITHOUT LIMITING THE FOREGOING, PURCHASER

• ASSUMES ALL RISK AND LIABILITY FOR LOSS, DAMAGE OR INJURY TO PURCHASER AND PURCHASER'S PROPERTY AND TO OTHERS AND THEIR PROPERTY ARISING OUT OF THE USE, MISUSE OR INABILITY TO USE THIS PRODUCT SOLD BY SAMSUNG NOT CAUSED DIRECTLY BY THE NEGLIGENCE OF SAMSUNG. THIS LIMITED WARRANTY SHALL NOT EXTEND TO ANYONE OTHER THAN THE ORIGINAL PURCHASER OF THIS PRODUCT, IS NONTRANSFERABLE AND STATES YOUR EXCLUSIVE REMEDY.

• Some states do not allow limitations on how long an implied warranty lasts, or the exclusion or limitation of incidental or consequential damages, so the above limitations or exclusions may not apply to you. This warranty gives you specific legal rights, and you may also have other rights which vary from state to state.
 • This product is for personal use only, and is only for use in compliance with the limitations of copyright and other laws.

To obtain warranty service, please contact SAMSUNG at:
 Samsung Electronics America, Inc.
 400 Valley Road, Suite 201 Mount Arlington, NJ 07856
 Tel: (973) 601-6000, Fax: (973) 601-6001
 1-800-SAMSUNG (1-800-726-7864)
 www.samsung.com / www.napster.com
 081299

