

Y P - 6 0

SAMSUNG

D I G I T A L A U D I O P L A Y E R

SAMSUNG ELECTRONICS CANADA, INC.

HEADQUARTERS

7037 Financial Drive, Mississauga, Ontario, Canada L5N 6R3
TEL: 1-905-542-3535
www.samsung.ca

SERVICE DIVISION

7037 Financial Drive, Mississauga, Ontario, Canada L5N 6R3
1-800-SAMSUNG (1-800-726-7864)

SAMSUNG

ELECTRONICS

yepp
Sports™

- Sports Function Support
- 2xMP3 support
- 3D surround sound
- FM reception
- MP3 and WMA playback
- Encoding function
- 15 hours of continuous play



Contents

Preparations

Safety Instructions	4
Battery Charger Safety	6
Cautions for Recharging	7
Features	8
Accessories	11
Location of Controls (yepp)	12

Connection to Computer

Connecting yepp to PC	14
Manual Installation of USB Driver	18
Using yepp Studio	24
● Downloading Files	24
● Creating 2xMP3 Files	26
● Downloading Albums	27
● Creating Folders	28
● Uploading Files	29
● Deleting Files	30
● Formatting	31
● To View Help on yepp Studio	32
Installing Fitness Manager	34
Using Fitness Manager	36

Basic Usage

Playing Music and Turning Off the Device	40
Adjusting the Volume / Hold Function	41
Searching for Music/Voice Files	42
Encoding MP3s	43
Listening to FM Radio	44
Encoding From FM Radio	45

Additional Usage

Loop Repeating	46
MENU Mode	47
Changing Modes	48
Setting the Advanced Functions	49
Playing Folders	50
Selecting the Play Mode	51
Selecting Sound Effects	52
Managing Files	52
● Deleting	54
● Formatting	54
TIME CONTROL	55
● WATCH TIME SET / POWER OFF TIME	55
● SLEEP TIME / BACKLIGHT	56
Setting the Environment	57
● DISPLAY	57
- INFORMATION / CONTRAST	57
● SOUND CONTROL	58
- WOW LEVEL	58
- ENCODE BIT RATE	59
- BEEP ON/OFF / DEFAULT VOLUME	59
● Setting Additional Regional Functions	60
- LANGUAGE / UNIT	60
Using Navigation	61
Setting FM	62
Using Sports Function	63

Appendix










MENU Table	68
------------	----

Customer Support

Troubleshooting	70
Specifications	72
Safety Information	74
Warranty	76

Safety Instructions

Read and understand all the instructions to avoid injury to yourself and damage to the equipment.

<p>Do not expose to extreme temperatures (above 95°F or below 23°F). Do not expose to moisture.</p> 	<p>Do not apply excessive pressure to the device.</p> 	<p>Do not let any foreign matter spill into the device.</p> 
<p>Do not place heavy objects on top of the device.</p> 	<p>Do not expose to chemicals such as benzene and thinners.</p> 	<p>Do not use the unit near any appliance that generates a strong magnetic field.</p> 
<p>Do not expose to direct sunlight or heat sources.</p> 	<p>Do not store in dusty areas.</p> 	<p>Do not try to disassemble and repair the device yourself.</p> 

* Please be aware that we claim no responsibility for damage from data loss due to breakdown, repair or other causes.

Earphones

Follow Traffic Safety Instructions

- Do not use the earphones while driving an automobile or riding a bicycle. It's not only dangerous, but also against the law.
- An accident may result if you turn up the volume of the earphones too high while walking down the street, especially when crossing at intersections.

Protect your ears

- Do not turn the volume up too high. Doctors warn against prolonged exposure to high volumes.
- Stop using the device or turn the volume down if you get ringing in your ears.

Ambient operating conditions

- Ambient temperature : 5°C ~ 35°C (41°F ~ 95°F)
- Humidity : 10 ~ 75%

Environmental Information

- Follow local guidelines for waste disposal when discarding packaging, batteries, and old electronic appliances.
- yepp packaging uses cardboard, polyethylene etc., and does not use any unnecessary materials.

Battery Charger Safety



CAUTION

RISK OF ELECTRIC SHOCK. DO NOT OPEN



The uninsulated parts inside the charger can cause electric shock. For your safety, do not open the charger's case.



Read this User Manual to prevent any problems that may occur while using the charger.

Warning

- Use the charger away from water sources to avoid fire or electric shock.

Caution

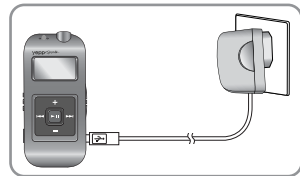
- To avoid electric shock, Use the charger only with a power outlet that matches the converter's plug.
- Make sure that the charger's plug is inserted all the way into the outlet.

Cautions for Recharging

A charger is provided with the YP-60. Please be sure to only use the provided adapter.

Plug the charger into a wall outlet.

- * When recharging is complete, "FULLY CHARGED" is shown in the display window.
- * Recharging continues to take place even when the USB cable is connected.



Caution

- Do not charge longer than the specified charge time to avoid risk of fire.
- Do not plug several devices into the same outlet.
- Do not use a damaged internal rechargeable battery or recharge adapter.
- When using the rechargeable battery for the first time or after several months of non-use, fully charge it first.
- Do not charge the rechargeable battery for more than 6 hours.
- Overcharging or overdischarging will reduce battery life.
- You should check the recharging time and switch to a new internal rechargeable battery when the battery life becomes low.
- The rechargeable battery is a consumable item and its capacity will decrease gradually.
- To prolong the life of your battery, use the fully charged battery until it is completely discharged, and then fully charge it again before use. If you charge a battery that is not completely drained, the battery operating time will decrease. In this case, repeat the full charge/discharge cycle several times.
- Do not let metallic objects, such as necklaces or coins, come into contact with the terminals (metallic parts) of the charger and the built-in rechargeable battery. A fire or electric shock may result.
- Be careful not to touch the recharge adapter with wet hands.


Sports Function Support

- Using the Consumed Calories, Heartrate and Stopwatch functions will help you exercise much more efficiently and scientifically.

Encoding Function

- You can make an MP3 file from an external source using the ENC jack on the main unit.
- You can also convert an FM radio program into an MP3 file in real time.

3D surround sound

- You will hear deep bass and 3D surround sound.
-  is a trademark of SRS Labs, Inc.
WOW technology is incorporated under license from SRS labs, Inc.

MP3 & WMA Playback

- MP3 is an MPEG1 Layer3 audio format.
- WMA is a Microsoft Windows Media audio format.

DIGITAL SOUND yepp'

FM Reception

- Listening to an FM program is made easy with Auto Search and Frequency Memory functions.

Sound

- You can adjust the equalizer manually.

15-Hour Continuous Play

- Use a lithium polymer rechargeable battery in order to play continuously for up to 15 hours.

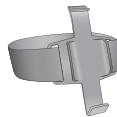
Accessories



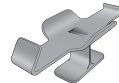
Player



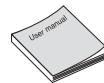
Earphones



Arm band



Finger Clip



User manual



Earphone extension cable



Line in cable



USB cable



Charger

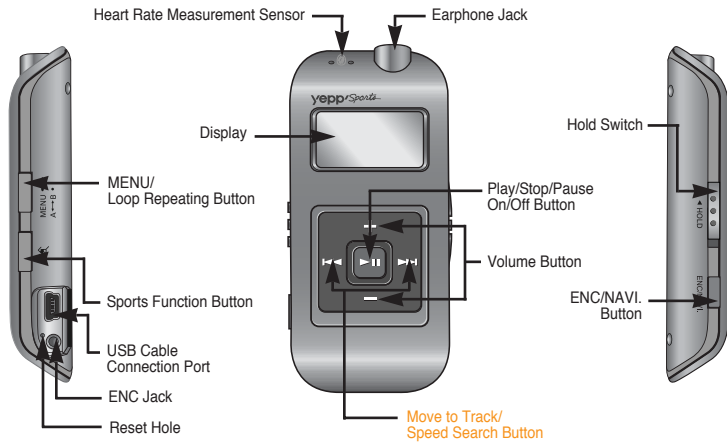


Installation CD

Model	YP-60 H	YP-60 V	YP-60 X	YP-60 Z
Built-in memory	128MB	256MB	512MB	1GB

- The capacity of the useable built-in memory is less than indicated as the internal firmware uses a part of the memory as well.
- Design of accessories is subject to change, for the purposes of improvement, without notice.

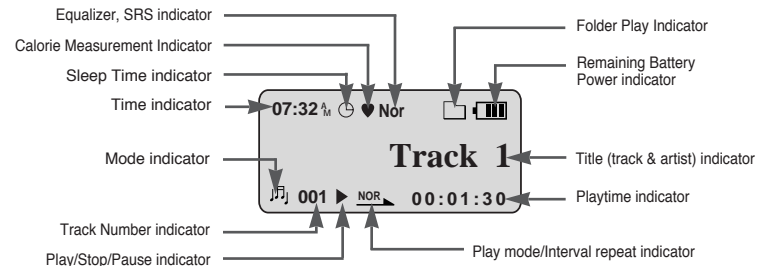
Location of Controls (yeppl)



Note

- If the device won't respond even after pressing the buttons, reboot it by pressing the Reset Hole with a pin.

Display



Connecting the yepp to a PC

System Requirements.

The PC system must meet the following specifications:

- Pentium 133MHz or greater.
- Windows 98 SE/ME/2000/XP.
- 40MB of available hard disk space
- CD-ROM drive.
(double speed or greater)
- USB port (1.1) supported.
- VGA graphics.
- DirectX 8.0 or above.

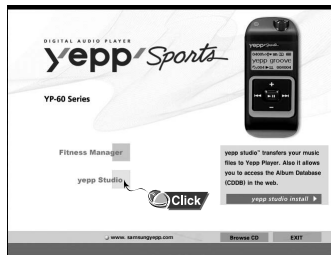
Note

- Windows ME, 2000 and XP can recognize the driver without installing the provided program. However, you must install the program in order to format the yepp and upgrade the firmware.

Before connecting yepp to PC, make sure to install yepp Studio. If "Add New Hardware Wizard" appears, press the [Cancel] button and install yepp Studio.

Installing software

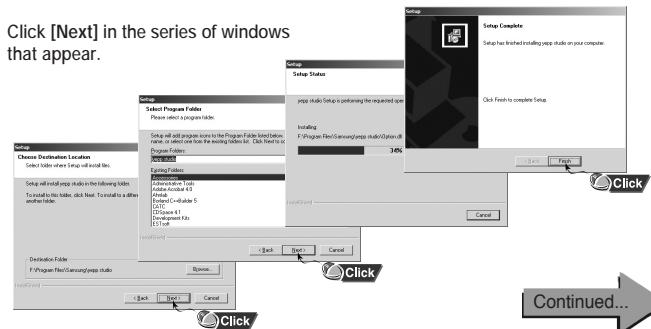
- 1 Insert the Installation CD into the CD-ROM drive. The picture shown below appears. Select [yepp Studio].



- 2 Choose the language you wish to use.



- 3 Click [Next] in the series of windows that appear.



Connecting the yepp to a PC

Connecting the yepp to a PC with a USB cable

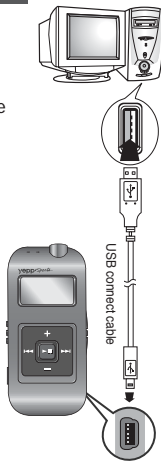
4 Connect a USB cable to the USB port on the computer.

5 Connect the opposite end of the USB cable to the USB cable port on the right side of the yepp.

- If you disconnect the USB cable from your PC while implementing a command or initializing during USB driver installation, your PC may not function correctly.

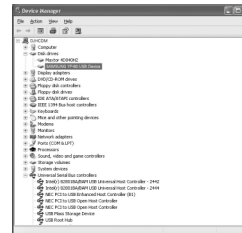
6 The USB driver is installed with a message saying that it is searching for a new device. You may not see the display screen during installation. Go to the device manager to check that installation has been successfully completed.

7 Upon installation of the USB driver "SAMSUNG YP-60" will appear in the [Start] → [Settings] → [Control Panel] → [System Properties] → [Device Manager].



How to check the USB driver

- Windows 98/ME:
Control Panel → System → Device Manager → Disk drives → SAMSUNG YP-60
- Windows 2000:
Control Panel → System → Hardware → Device Manager → Disk drives → SAMSUNG YP-60 USB Device
- Windows XP:
Control Panel → System → Hardware → Device Manager → Disk drives → SAMSUNG YP-60 USB Device



8 When the USB driver is not installed automatically, refer to the next page.

Manual Installation of the USB Driver

Go to "Using yepp Studio" on page 24 if the USB driver is in place.
Follow these steps if the USB driver is not in place.

When an error occurs during installation of the USB driver

1 Check the device manager.

- Windows 98, ME:
Control Panel → System → Device Manager
- Windows 2000:
Control Panel → System → Hardware → Device Manager
- Windows XP:
Control Panel → System → Hardware → Device Manager



2 Check if there is a device listed with an exclamation point or a question mark (displayed as unknown device or USB device).

3 Double click on the device listed with an exclamation point or a question mark.

4 After selecting the driver, click on [Update Driver].



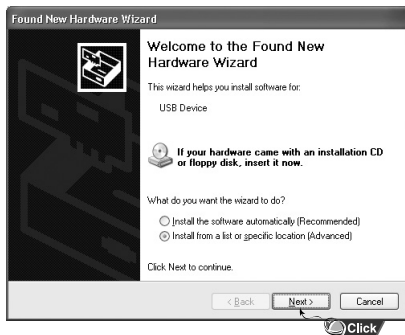
5 Select a compatible driver, click on [Next] to finish.



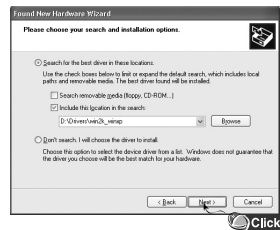
Manual Installation of the USB Driver

In Windows XP

- 1 Select [Install from a list or specific location] and click the [Next] button.



- 2 Select [Search removable media] or select [Include this location in the search] and designate [CDROM]\Drivers\win2k_winxp. For example E:\Driver\win2k_winxp.



- 3 Click the [Finish] button when installation is complete.

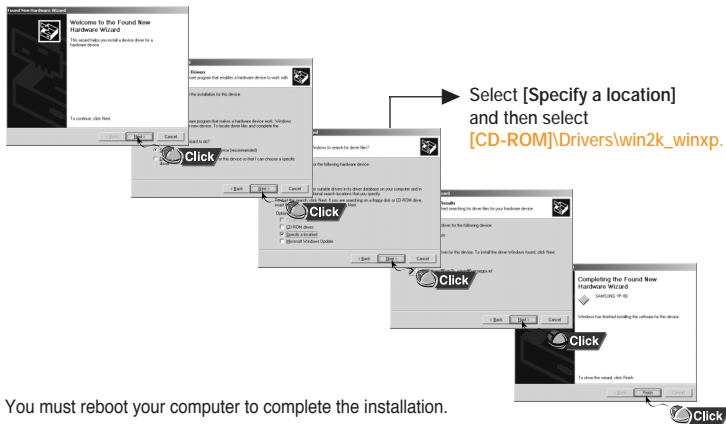


- You must reboot your computer to complete the installation.

Manual Installation of the USB Driver

In Windows 2000

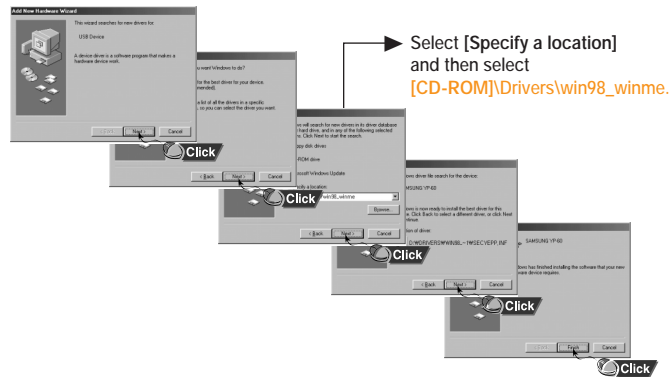
Click [Next] in the series of windows that appear.



- You must reboot your computer to complete the installation.

In Windows 98

Click [Next] in the series of windows that appear.



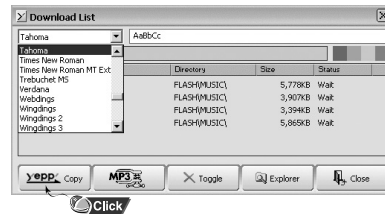
- You must reboot your computer to complete the installation.

Using yepp Studio

Downloading Files

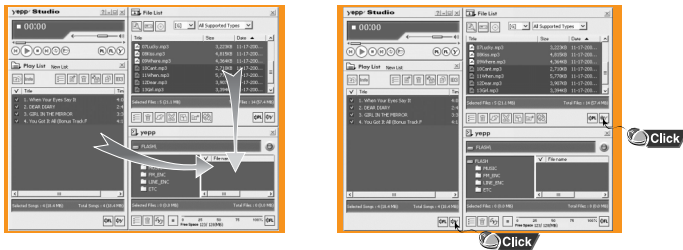
- 1 Turn on the yepp and connect it to your PC.
- 2 Click [yepp Studio] on the desktop.
- 3 Select the file you wish to download from the Play List Window or File List Window.
 - If the Play List Window is empty, use the [Open Files] button on the main window or drag-and-drop the desired files from the File List Window to the Play List Window.
- 4 Drag-and-drop the selected files to the Music folder in the yepp window or click the [Transmit to yepp] button to move the files.

- 5 When the Download List Window appears, click the **yepp Copy** button.
 - The selected files are sent to the yepp.
 - You can change to the desired font when downloading.



Note

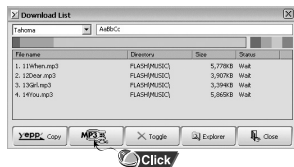
- Refer to Help for more detailed information about using yepp Studio.
- When running the yepp Studio for the first time, input the serial number listed on the back of the yepp when the Product Number Registration Window appears.
- You cannot use yepp Studio while Fitness Manager is running.



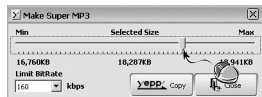
Using yepp Studio

Creating 2xMP3 Files

- 1 Click the **MP3** button on the Download List Window.



- 2 After selecting the Limit BitRate first, move scroll bar with mouse to adjust the file size.



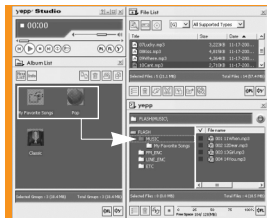
- 3 Click the **yEPP Copy** button.
 - Files converted to 2xMP3 are sent to the yepp.

Note

- Refer to Help for more detailed information about using yepp Studio.
- Limit Bitrate means the minimum sound quality(Bitrate) when transferring to 2xMP3. By selecting the level of LimitBitrate, you can change the level of sound quality.

Downloading an Album

- 1 Turn on the yepp and connect it to your PC.
- 2 After selecting the album that you wish to download from the Album List Window, drag-and-drop the album to the Music folder in the yepp window.
- 3 When the Download List Window appears, click the **yEPP Copy** button.
 - The selected album is sent to the yepp.



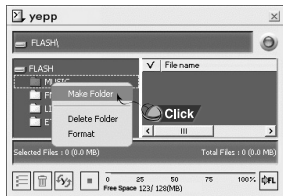
Note

- Refer to Help for more detailed information about using yepp Studio.
- Albums can only be downloaded to the Music folder.

Using yepp Studio

Creating a Folder

- 1 Turn on the yepp and connect it to your PC.
- 2 Click [yepp Studio] on the desktop.
- 3 After clicking in the Music folder using the right mouse button, select [Make Folder].



- 4 When the Making New Folder Window appears, click [OK] after entering the folder name.

- A new sub-folder is created under the Music folder.

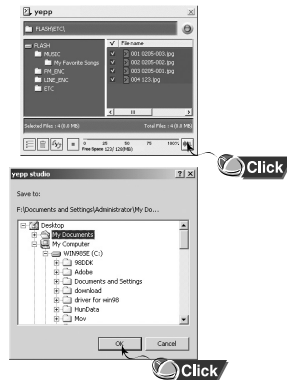


Note

- Refer to Help for more detailed information about using yepp Studio.
- Up to 100 folders can be created in the Music folder.
- Only subfolders of the Music folder can be deleted.

Uploading Files

- 1 Turn on the yepp and connect it to your PC.
- 2 Click [yepp Studio] on the desktop.
- 3 After selecting the files to upload in the yepp window, click the [Transmit to yepp] button at the bottom of the window.
- 4 After selecting the folder to save the files to when the Folder Setting Window appears, click the [OK] button.



Note

- Refer to Help for more detailed information about using yepp Studio.
- MP3 and WMA formatted files that are in the Music folder are not uploaded to the PC.

Using yepp Studio

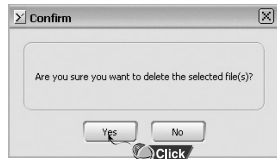
Deleting a File

- 1 Turn on the yepp and connect it to your PC.
- 2 Click [yepp Studio] on the desktop.
- 3 After selecting the file that you want to delete in the yepp window, click the [Delete] button.



- 4 Click [Yes] when the confirm window appears.

- The selected file is deleted.

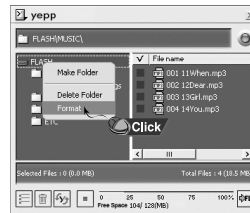


Note

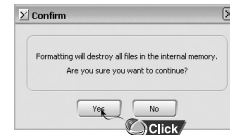
- Refer to Help for more detailed information about using yepp Studio.

Formatting

- 1 Turn on the yepp and connect it to your PC.
- 2 Click [yepp Studio] on the desktop.
- 3 After clicking in the yepp window with the right mouse button, select [Format].



- 4 Click [Yes] when the confirm window appears.



Note

- Refer to Help for more detailed information about using yepp Studio.

Using yepp Studio

To View Help on yepp Studio

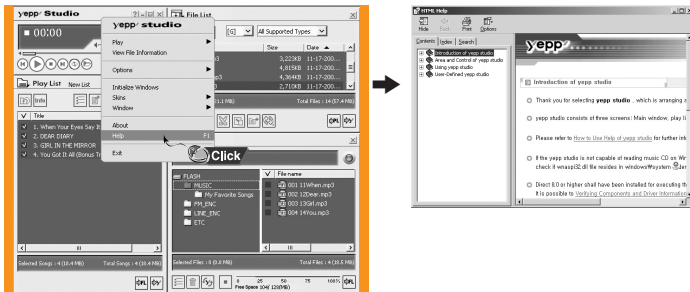
Run yepp Studio and press F1.

- Help will appear.

Move the arrow to the top of yepp Studio and right click on the mouse.

The following selection window will appear.

- Click on Help and the Help window will appear.

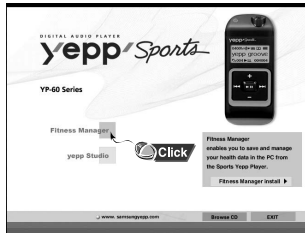


Note

- Music recognition technology and related data are provided by Gracenote and Gracenote CDDB® Music Recognition ServiceSM.
- CDDB is a registered trademark of Gracenote. The Gracenote logo and logotype, the Gracenote CDDB logo and logotype, and the "Powered by Gracenote CDDB" logo are trademarks of Gracenote. Music Recognition Service and MRS are service marks of Gracenote.
- If a firewall is installed on the PC, it may not be possible to import CDDB information.

Installing Fitness Manager

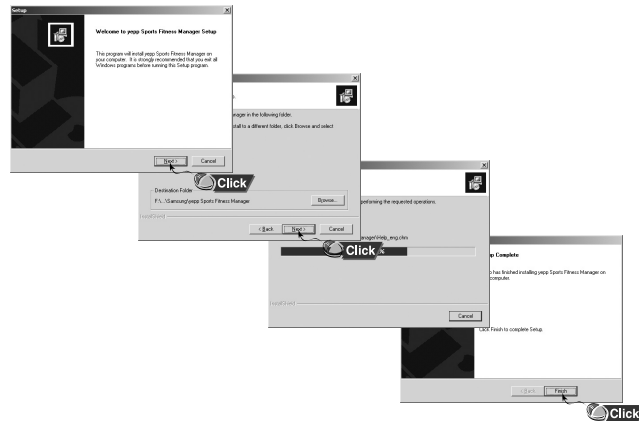
- 1 Insert the Installation CD into your PC's CD-ROM drive. Select [Fitness Manager].



- 2 Choose the language you wish to use.



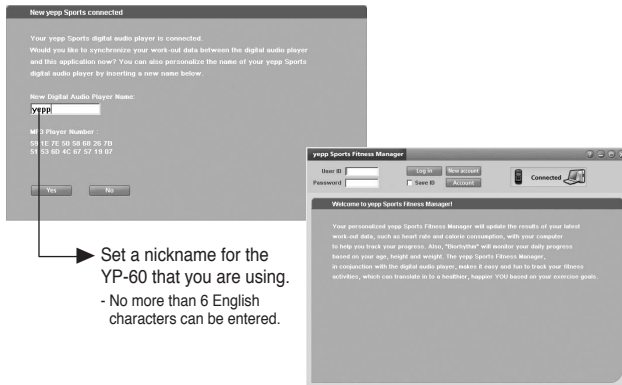
- 3 Click [Next] in the series of windows that appear.



Using Fitness Manager

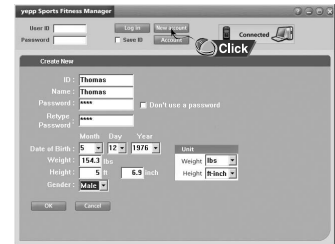
Log In

- 1 Turn on the yepp and connect it to your PC.
- 2 Click [yepp Sports Fitness Manager] on the desktop.



Set a nickname for the YP-60 that you are using.
- No more than 6 English characters can be entered.

- 3 When connecting to Fitness Manager for the first time, click [New Account] and create a new username of 6 letters or less.



- 4 Press the [OK] button after entering your personal information.



- 5 After entering a username and password, log in by clicking [Login].



Note

- Input up to six English letters.
In order to upload the measured data that was saved on the device to a PC, yepp Studio must be installed.
- If Fitness Manager is run after connecting the device to the PC, the measured data saved on the device will be updated automatically to the PC and then deleted.
- Fitness Manager cannot be used while yepp Studio is running.

Using Fitness Manager

Setting Up a User

- You can change user information or delete a user.

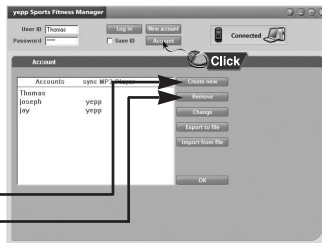
1 Turn on the yepp and connect it to your PC.

2 Click [Account] after selecting Fitness Manager.

3 After setting up the user, click the [OK] button.

Setting Up a New User

Deleting a User



Using Fitness Manager

[Calorie List]

- Click [Calorie List].

- You can see the measured data that has been saved.

- Data : Displays the data and time when a user takes exercise.
- Exercise time : Displays the exercise in Hour and Minute.
- Starting HR : Displays Heart rate(bmp) before exercise.
- Final HR : Displays Heart rate(bmp) after exercise.
- Calorie Data : Displays the calorie consumption(kcal).
- Remark : Displays the contents that a user enters.

Date	Time	Starting HR	Final HR	Calorie Data	Remark
11-19-2003	11:30	75.0	102.0	370	Jogging
11-16-2003	11:30	75.0	102.0	450	Jogging
11-14-2003	12:00	81:00	75.0	220	baseball
11-05-2003	6:00	80:00	75.0	400	Jogging
11-03-2003	17:00	80:00	75.0	120	tennis
11-02-2003	17:00	81:00	75.0	425	tennis
11-01-2003	9:10	81:10	75.0	300	Jogging

[Calorie Chart]

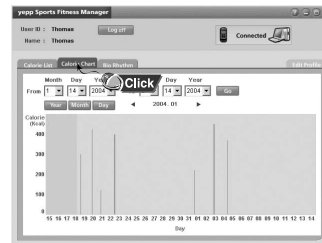
- Click [Calorie Chart].

- You can check the calories consumed as a result of exercise in units of years, months and days.

Year : Displays calorie data for one year based on the current point.

Month : Displays calorie data for one month based on the current point.

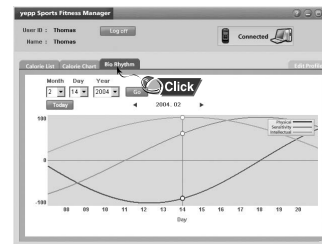
Day : Displays calorie data by time as of today.



[Biorhythm]

- Click [Biorhythm].

- You can check the biorhythm of the selected user.



Note

- If [Edit Profile] is clicked, personal information can be changed.
- The resulting graph of the biorhythm reflects the statistical values of the measured data and so may be different from the actual values.
- Refer to Help for more detailed information about using yepp Studio.

Playing Music and Turning Off the Device

Turning Power On and Off

- Power On : Press and hold the ►|| button to turn on the power.
- Power Off : Press and hold the ►|| button to turn off the power.

Playing Music

Press the ►|| button.

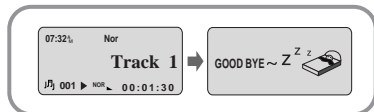
- Playback starts.



Pausing Music

Press the ►|| button to pause playback.

- While in Pause mode, briefly press ►|| again to resume playback.



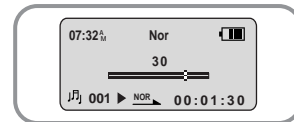
Note

- WMA files can be played only as music files with a compression rate of 64Kbps-192Kbps, that can be created in Windows Media Player (Version 8.0).
- The power off time can be set in the menu.

Adjusting the Volume/Hold Function

Adjusting the Volume

Press the -,+ buttons to adjust the volume.




Note

- The volume can be adjusted in increments between 0 and 40.
- Press once to adjust the volume by one step.
Press and hold to increase or decrease the volume in greater increments.

HOLD Function

In Hold mode, all buttons are disabled.

Slide the  switch on the player in the direction of the arrow.

- When the button is pressed, the "🔒 HOLD!" message will appear on the display.



Searching for Music/Voice Files

To search for specific parts during play

- A desired passage can be searched for by pressing and holding down the **⏮**, **⏭** buttons during play.

To change tracks during play

- If the **⏭** button is pressed during play, the next track is played.
- If the **⏮** button is pressed before five seconds have passed since starting to play a track, the previous track is played and if the **⏮** button is pressed after five seconds, the current track is replayed from the beginning.

To change tracks when stopped

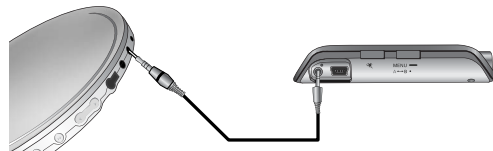
- If the **⏮**, **⏭** buttons are pressed when stopped, the yepp moves to the previous or next track, respectively.

Note

- VBR(Variable Bit Rate) file: A file that constantly changes the compression rate according to the type of sounds, such as their pitch, in the file.
- With VBR files, pressing the **⏮** button within 5 seconds from the start of the track may not result in the previous track playing.
- Files that were downloaded in MP2 or MP1 and had their file extension changed to MP3 may not play.

Encoding MP3s

- 1 Connect the Audio Output port on the external audio source (or the Line Out port) to the ENC port on the device with the Line in cable.



- 2 If the ENC button is pressed, MP3 encoding begins.
 - If the **⏭** button is pressed, encoding is paused and if the **⏭** button is pressed again, the encoding resumes.
- 3 If the ENC button is pressed during encoding, the encoding stops and an encoding file is created.
 - Encoding is performed in order (ENC001, ENC002, etc.) and files are saved in the MP3 format after encoding.

Note

- The bit rate can be set to 64Kbps, 96Kbps and 128Kbps.
- During encoding, there is no beeping sound and the button lights and backlight do not illuminate.

Caution

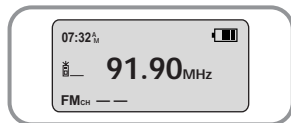
- Do not disconnect the Line cable during Encoding.
- If the battery is not sufficiently charged, encoding will not be done.
- Adjust the volume of the external audio source to a suitable level and encode it. If the volume level is extremely high, the sound quality may not be good.

Listening to FM Radio

Select FM mode first. (Refer to "Changing Modes" on page 48)

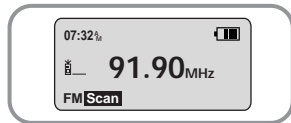
Manual Search for a Frequency

- Press the **◀▶** buttons to search manually for the desired frequency.



Automatic Search for a Frequency

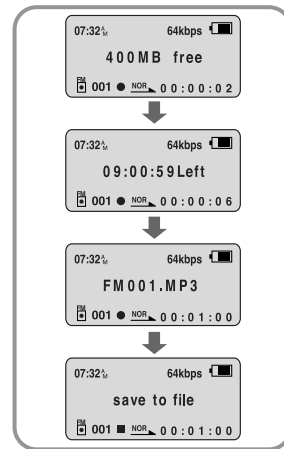
- Press and hold the **◀▶** buttons in order to search for and stop at frequencies with reception.



Encoding From FM Radio

Doing FM encoding

- 1 Press the ENC button during FM reception.
 - Encoding of the currently transmitted FM broadcast begins.
- 2 Press the ENC button again.
 - A file is created and the encoding stops.
 - Files are saved in order, starting FM001, FM002...etc., and stop automatically when the memory is full.



Note

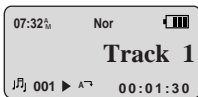
- During encoding, there is no beeping sound and the button lights and back light do not illuminate.
- Encoded files will become 64Kbps files after they are encoded from FM.

Loop Repeating

Starting Point

While playing music files, press the **A↔B** button briefly at the beginning of the loop you want to set.

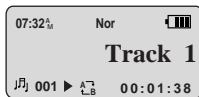
A↔ appears in the display.



Ending Point

Press the **A↔B** button briefly again to set the end of the loop.

A↔B appears in the display.
The loop is played repeatedly.



Note

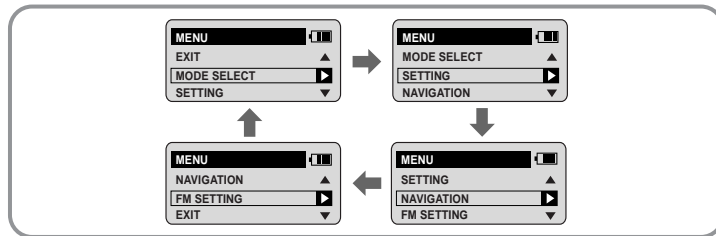
- Press the **A↔B** button briefly to cancel the loop.
- Loop Repeat is automatically released if you Speed Search with the **◀▶** buttons.

MENU Mode

Press and hold the **MENU** button while in Music/Voice Mode.

After navigating with the **←**, **→** buttons, press the **MENU** button to select the desired menu.

Menu mode is cancelled if the **▶||** button is pressed.



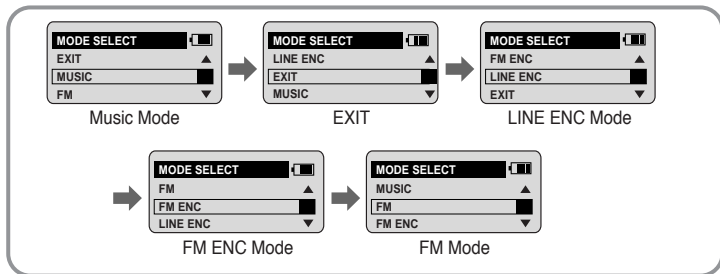
- **MODE SELECT** : When changing modes.
- **SETTING** : When changing the yep's advanced functions.
- **NAVIGATION** : When performing a simple search for saved music files.
- **FM SETTING** : When saving frequencies automatically or checking saved frequencies.
- **EXIT** : To exit MENU.

Note

- In MENU mode, no input for 30 seconds will cancel the MENU mode.

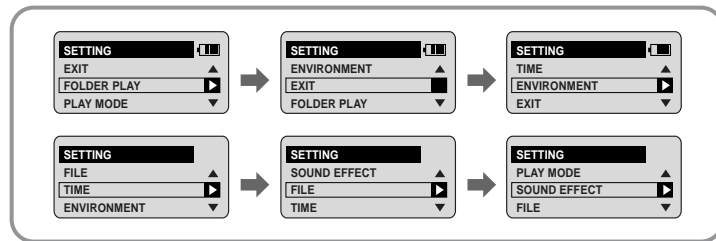
Changing Modes

- 1 Press and hold the **MENU** button.
- 2 After using the **-**, **+** button to move to MODE SELECT, press the **▶||** button.
- 3 Move to the mode you want by using the **-**, **+** button, and then press the **▶||** button.



Setting Advanced Functions

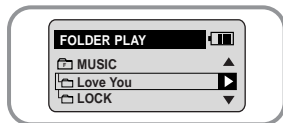
- 1 Select **SETTING** in the MENU. (Refer to "MENU Mode")
- 2 In **SETTING**, after moving to the desired function with the **-**, **+** button, press the **▶||** button.



Playing Folders

1 Select FOLDER PLAY in SETTING.

- The saved folders are shown.



2 In PLAY MODE, after moving to the desired folder with the **-**, **+** button press the **▶||** button.

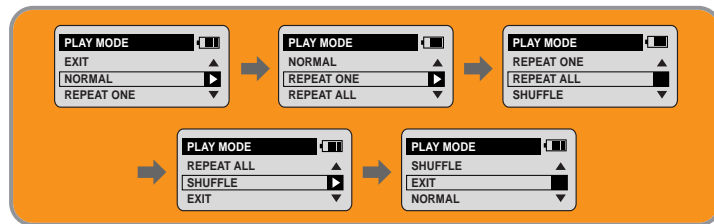
- The files in the selected folder are played.
- FOLDER PLAY does not work when there aren't any files in the folder.
- Move to each respective mode by selecting MUSIC, FM ENC or LINE ENC.



Selecting the Play mode

1 Select PLAY MODE in SETTING.

2 In PLAY MODE, after moving to the desired mode with the **-**, **+** button, press the **▶||** button.

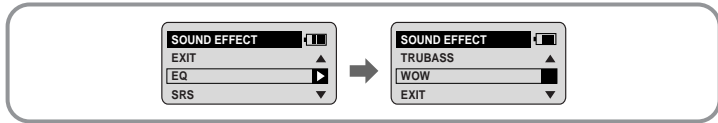


- NORMAL : To play all the tracks in order one time.
- REPEAT ONE : To repeat one track.
- REPEAT ALL : To repeat all tracks.
- SHUFFLE : To play tracks at random.
- EXIT : To move to the higher-level menu.

Setting Sound Effects

1 Select **SOUND EFFECT** in **SETTING**.

2 In **SOUND EFFECT**, after moving to the desired sound mode with the **-**, **+** button, press the **▶||** button.



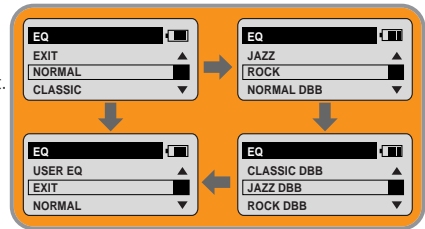
- **EQ** : You can adjust the equalizer manually.
- **SRS** (⊕) : You will hear 3D Stereo sound.
- **TRUBASS** (≡) : This is a bass boost feature that adds fullness to the sound.
- **WOW** : This feature allows you to enjoy the SRS and Trubass features simultaneously.
- **EXIT** : To move to the higher-level menu

Note

- Please adjust the volume to a suitable level, as the volume may increase in the SRS setting.
- This unit supports sampling frequencies of 32KHz, 44.1KHz or 48KHz.
- You can only set SRS functions in Music Mode. (Except for 2xMP3 files)

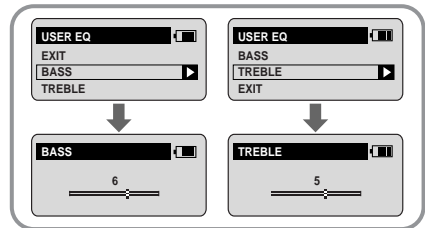
EQ

1 Use the **-**, **+** buttons to move to the setting you want (out of the 4 settings available) and press the **▶||** button to select.



2 If you want to manually adjust the equalizer, select **User EQ** and **Bass/Treble**.

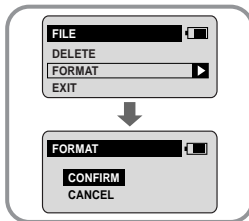
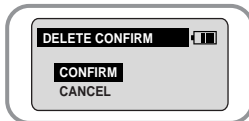
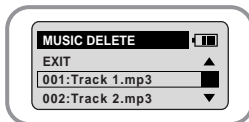
- **BASS/TREBLE** can each be adjusted from 0 to 10 with the **-**, **+** button.



Managing Files

Deleting

- 1 Select FILE in SETTING.
- 2 Select DELETE and then move to the file you wish to delete.
 - If EXIT is selected, files in other folders can also be selected.
- 3 Select CONFIRM in the DELETE CONFIRM Window after pressing the ► button.
 - The selected file is deleted.



Formatting

- 1 Select FILE in SETTING.
- 2 Select FORMAT in FILE.
 - Formatting is performed if CONFIRM is selected.

Note

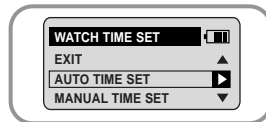
- All files are deleted if the yepp is formatted.

TIME CONTROL

Select TIME in SETTING.

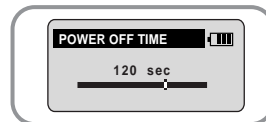
WATCH TIME SET

- Select the method of setting the clock time using the **←**, **+** button.
- AUTO TIME SET : Automatically sets the clock time when connected and sending data to a PC.
- MANUAL TIME SET : The clock time can be set manually.
- Select CONFIRM to finish setting the time after setting manually.



POWER OFF TIME

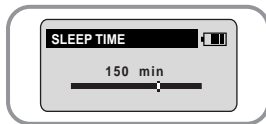
- Use the **←**, **+** buttons to set the POWER OFF TIME.
- The power off time can be set from 3 to 180 seconds. After stopping playback, the power is turned off automatically if no buttons have been pressed during the set time.
- When set to NO POWER OFF, the power does not turn off even when the device is stopped.



TIME CONTROL

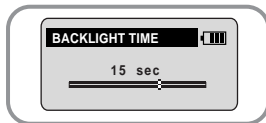
SLEEP TIME

- Use the **-**, **+** buttons to set the SLEEP TIME.
- The sleep time can be set from 3 to 180 minutes.
The power turns off automatically after the set time has passed.
- When set to NO SLEEP, the power does not turn off automatically.



BACKLIGHT TIME

- Use the **-**, **+** buttons to set the Backlight "ON" time.
- The setting range for Backlight-On Time is 0 to 30 seconds.
- When set to Always On, the backlight stays on continuously.



Note

- The backlight does not illuminate when the residual battery level is insufficient.

Setting the Environment

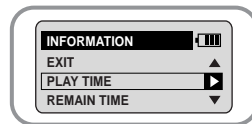
Select ENVIRONMENT in SETTING.

DISPLAY

Select DISPLAY in the ENVIRONMENT.

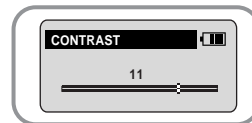
INFORMATION

- Use the **-**, **+** buttons to select the music mode and select the content to be displayed at the top of the Screen Display Window.
- PLAY TIME : Displays the current play time
- REMAIN TIME : Displays the remaining play time
- REMAIN MEMORY : Displays the remaining memory
- BIT RATE : Displays the wave bit rate that is being played



CONTRAST

- Use the **-**, **+** buttons to set the Contrast.
- The setting range for the contrast, which adjusts the brightness of the screen, is from 0 to 15.



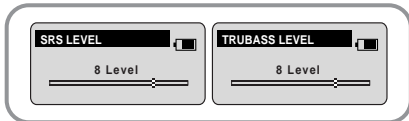
Setting the Environment

SOUND CONTROL

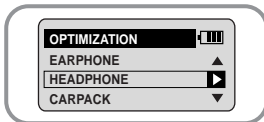
Select SOUND in ENVIRONMENT.

WOW LEVEL

- The levels of SRS and TRUBASS can be adjusted.
- Use the **-**, **+** buttons to select the level you want.
- The level for SRS and TRUBASS can each be set within the range of 0 to 10.

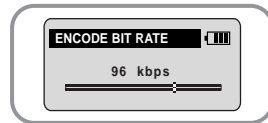


- If OPTIMIZATION is selected, the SRS function is optimized to the connected device.
- Set the desired device to earphone, headphone, speaker or carpack (car cassette adapter) by using the **-**, **+** buttons.



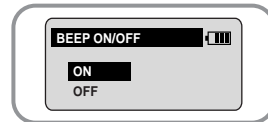
ENCODE BIT RATE

- Use the **-**, **+** buttons to set the desired MP3 encoding bit rate.
- You can set the desired bit rate to 64kbps, 96kbps or 128kbps when doing MP3 encoding.



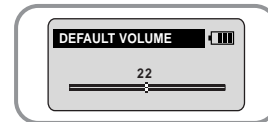
BEEP ON/OFF

- Use the **-**, **+** buttons to set the BEEP mode.
- BEEP ON : A beep sounds each time a button is pressed.
- BEEP OFF : No beep sounds when a button is pressed.



DEFAULT VOLUME

- Use the **-**, **+** buttons to set the DEFAULT VOLUME.
- It is possible to set the default volume to a value between 0 and 40. If the power is turned on again after having adjusted the volume above the default value, music is played at the default volume.
- If the power is turned on again after the volume was set to within the default value, the music is replayed at the previously played volume.



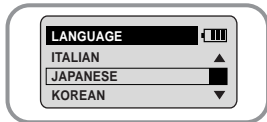
Setting the Environment

Setting Additional Regional Functions

Select COUNTRY in ENVIRONMENT in **SETTING**.

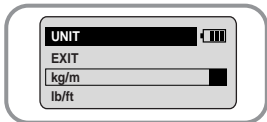
LANGUAGE

- Use the **←**, **+** button to select the desired menu language from among nine languages.
- The menu is shown in the selected language.
- **SETTING**, **ENVIRONMENT**, **COUNTRY** and **LANGUAGE** are shown only in English.



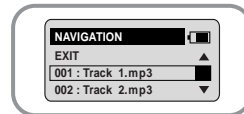
UNITS

- Use the **←**, **+** button to select kg/m or lb/ft as the measurement units.

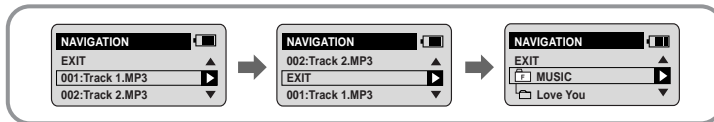


Using Navigation

- 1 Press and hold the **ENC/NAVI.** button.
 - The file that is currently being played is shown.



- 2 After using the **←**, **+** button to move to **NAVIGATION**, press the **▶▶** button.
 - If **EXIT** is selected, you can move to another folder.

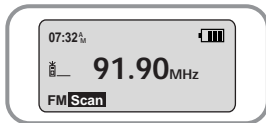


- 3 Select the file or folder that you want to play.
 - **▶▶, ▶▶▶** : When entering a folder or when playing a file.
 - **◀◀** : When moving to a higher-level folder. When leaving **NAVIGATION** mode.
 - **←, +** : When moving to a file or folder in the same directory.

Setting FM

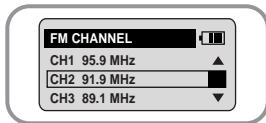
Automatic Storage of a Frequency

- 1 Press and hold the **MENU** button while in FM Mode.
 - FM SETTING is shown.
- 2 After moving to AUTO PRESET using the **-**, **+** button, press the **▶** button.
 - Frequencies within the range of 87.5MHz to 108MHz are automatically selected and stored.
 - Frequencies are automatically stored, starting from 1.



Searching Stored Frequencies

- 1 Press and hold the **MENU** button while in FM Mode.
 - FM SETTING is shown.
- 2 Press the **▶** button after using the **-**, **+** buttons to move to the desired FM CHANNEL.



Note

- You can store up to 20 frequencies.

Using Sports Function

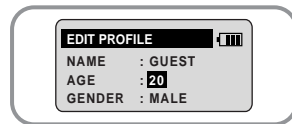
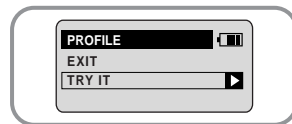
* Caution when measuring your heart rate

- Don't press too hard when placing your finger on the sensor.
- Don't move your finger during measurement.

Setting the User

Before using the sports functions select the user.

- 1 Press the Sports Function Select button.
- 2 Select PROFILE in SPORTS FUNCTION.
- 3 Select a user ID registered on the PC or TRY IT and set the age, sex, height and weight of the user.
- 4 Select CREATE after the setting is complete.





Note

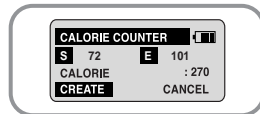
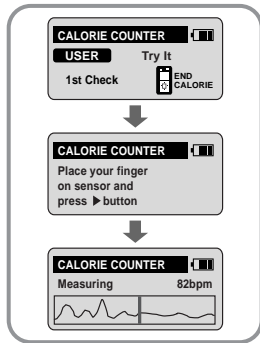
- When measuring after selecting TRY IT, data is not saved.

Using Sports Function




Measuring Calories Consumed

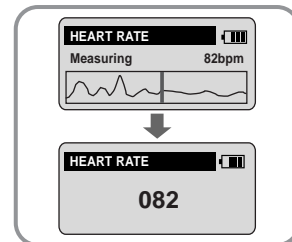
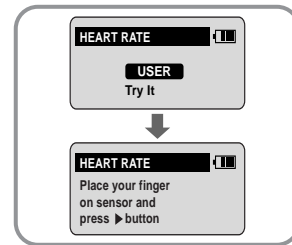
Measure your heart rate before and after exercise in order to find out the calories burned.

- 1 Before starting exercise, press the Sports Function Select  button.
- 2 Select CALORIE COUNTER in SPORTS FUNCTION.
 - Shows the selected user and whether or not measurement has started.
- 3 After placing your finger on the sensor on the top of the device, press the  button.
 - Measurement of heart rate starts.
 - When the heart rate measurement finishes, the heartrate that was measured is saved automatically and a "♥" indicator is shown in the display window.
- 4 Measure your heart rate one more time after finishing your exercise as in #2 and #3 above.
 - Shows the calories consumed by your exercise.
 - The calories are shown in kcal units.
- 5 If you want to save the data, select CREATE.
 - The measured data is saved.




Measuring Heartrate

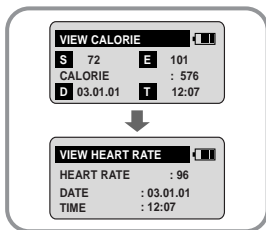
- 1 Press the Sports Function Select  button.
- 2 Press the  button in SPORTS FUNCTION and select HEART RATE MONITOR.
 - The selected user and whether a measurement has started will be shown.
- 3 After putting your finger on the sensor on the top of the device, press the  button.
 - Heart rate measurement starts.
 - When measurement is complete, the heart rate is shown on the screen.




Using Sports Function

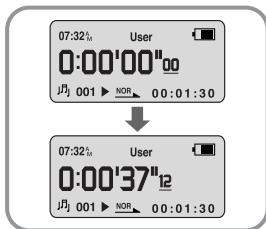
Checking the Database

- 1 Press the Sports Function Select  button.
- 2 Select DATABASE in SPORTS FUNCTION.
- 3 To see the consumed calories measured, select VIEW CALORIES. To see the heart rate, select VIEW HEART RATE.
 - Shows the most recently measured data.




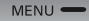


STOP WATCH function

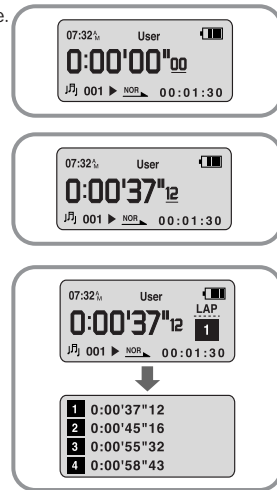
- 1 Press the Sports Function Select  button twice.
 - Shows the STOP WATCH.
- 2 Press the ENC/NAVI. button.
 - Time measurement starts.
- 3 Press the ENC/NAVI. button one more time.
 - The time measurement finishes.



Measuring Lap Time

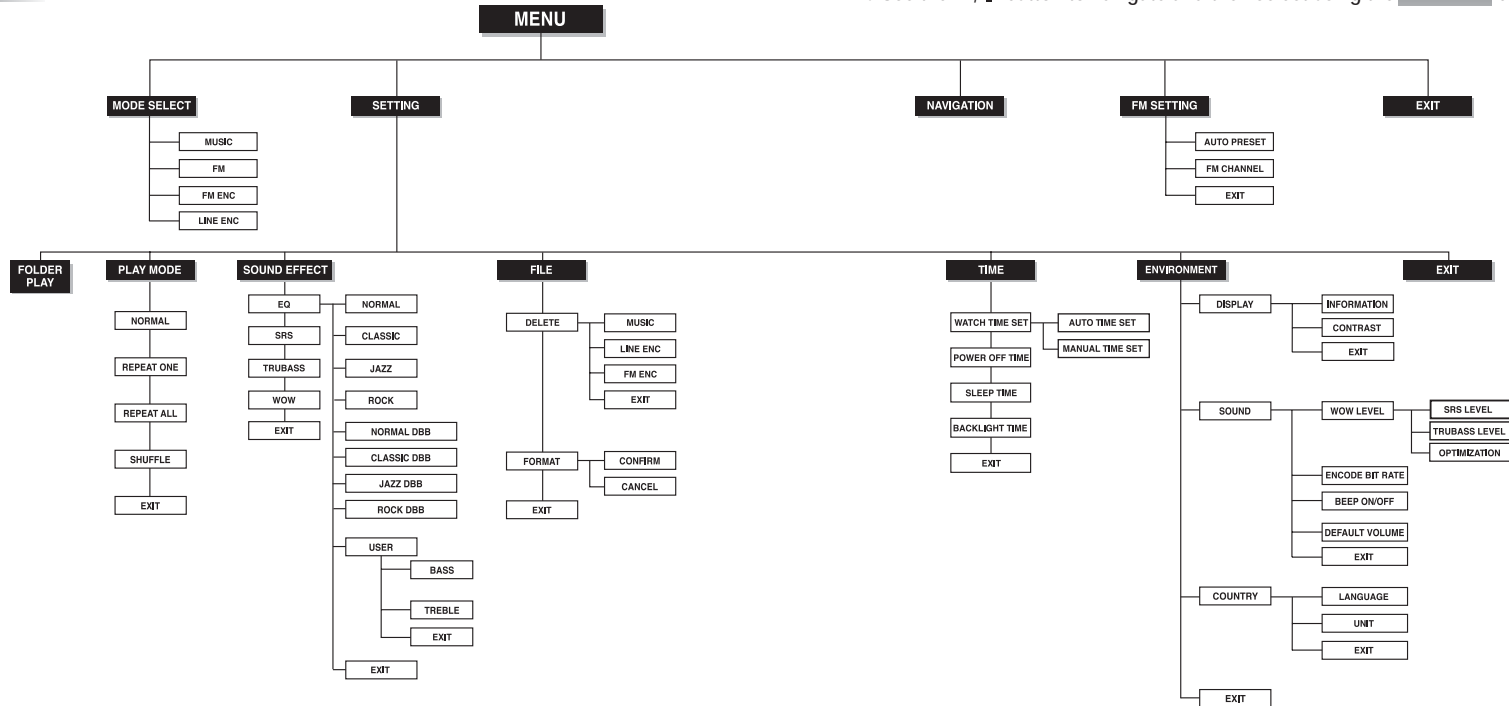
You can measure the user's interval time when exercising, such as when jogging or running a marathon.

- 1 Press the Sports Function Select  button twice.
 - Shows the STOP WATCH.
- 2 Press the ENC/NAVI. button.
 - Time measurement starts.
- 3 Press the **MENU**  button during time measurement.
 - "LAP" is shown and the lap time is recorded every time the **MENU**  button is pressed.
 - A maximum of three lap times can be recorded.
 - Press the **MENU**  button to record up to three lap times and then press the **ENC/NAVI.** button to stop. The three lap times and ending time are shown.



MENU Table

● Use the **-**, **+** button to navigate and then select using the **MENU** button.



Troubleshooting

The software doesn't work

- Refer to the recommended PC specifications.

The yepp does not work and the LCD displays nothing.

- Check the condition of the rechargeable battery.
- Press the RESET hole on the side of the main unit with a pin.

In PLAY mode, music is not played after pressing the ►|| button

- Verify that the device is currently set to Music mode.
- Check to see if MP3 or WMA files are saved in the built-in memory.
- Check to see if the HOLD switch is locked.
- Check if the REC button is on.

Files cannot be downloaded.

- Check the condition of the rechargeable battery.
- Check the connection between yepp and computer.
- Check and/or replace the battery, turn on the yepp's power.

Backlight does not work.

- Check the backlight setup.
- When the current and voltage of the rechargeable battery are low, the backlight automatically stays off in order to play longer.

The buttons do not work.

- Check the Hold switch setting.
- Press the RESET hole on the side of the main unit with a pin.

The yepp keeps turning off.

- In Stop mode, the power is automatically turned off after ten seconds (changes depending on settings).
- Check to see if there are files saved in it. The yepp will be turned off if no files are saved in it

Something is wrong with the play time displayed during Play mode.

- "VBR SONG" message is displayed instead of play time while VBR (Variable Bit Rate) file is playing.

LCD window is dark

- Check Contrast.

Strange characters are displayed on the screen during playback.

- Change the font settings in the Download List Window to the correct font.

Specifications

Model	YP-60
Built-in Memory capacity	128MB(YP-60 H)/256MB(YP-60 V)/512MB(YP-60 X)/1GB(YP-60 Z)
Voltage	3.7V (Li-polymer battery)
Playing time	Lasts up to 15hours (MP3 128Kbps, Vol level 20)
Recharge time	Approximately three hours.
Maximum number of files that can be saved	Up to 256 files (per folder).
Dimensions/Weight	1.53X3.66X0.66 inch/1.6 oz (Battery included)
Case	Plastic
Noise Ratio	80dB with 20KHz LPF
Earphones Jack Output Power	6mW(Max 10mW)/CH (16 Ω)
Output Frequency Range	20Hz~20KHz
Operating Temperature Range	-5 ~ +35°C(23~95°F)
FM Frequency	87.5 ~ 108.0 MHz
FM Signal to Noise Ratio	50dB
FM T.H.D	1%
FM Useable Sensitivity	10dB
File Support	MPEG1/2/2.5 Layer3(8Kbps ~ 320Kbps, 8KHz ~ 48KHz) WMA (64Kbps ~ 192Kbps, 32KHz, 44.1KHz, 48KHz)

SAMSUNG
ELECTRONICS

Samsung Limited Warranty

Samsung Electronics Canada Inc. (SECA), warrants that this product is free from defective material and workmanship.

SECA further warrants that if this product fails to operate properly within the specified warranty period and the failure is due to improper workmanship or defective material SECA will repair or replace the product at its option.

All warranty repairs must be performed by a SECA authorized service centre. (The name and address of the location nearest you can be obtained by calling toll free 1-800-726-7864 or visiting our web site at www.samsung.ca)

Labour
one (1) year (carry-in)

Parts
one (1) year

On carry-in models, transportation to and from the service centre is the customer's responsibility.

The original dated sales receipt must be retained by the customer and is the only acceptable proof of purchase. It must be presented to the authorized service centre at the time service is requested.

Exclusions

This warranty does not cover damage due to accident, fire flood and/or other acts of God; misuse, incorrect line voltage, improper installation, improper or unauthorized repairs, commercial use, or damage that occurs in shipping. Exterior and interior finish, lamps and glass are not covered under this warranty. Customer adjustments which are explained in the instruction manual are not covered under the terms of this warranty. This warranty will automatically be voided for any unit found with a missing or altered serial number. This warranty is valid only on products purchased and used in Canada.



MEMO



MEMO
