

44090

MUSICAM

Digital Camera and MP3 Player

Owner's Manual



© 2007 Sakar International, Inc. All rights reserved.
Windows and the Windows logo are registered trademarks of
Microsoft Corporation.
All other trademarks are the property of their respective
companies.

Table of Contents

Table of Contents.....	2
Introduction	2
Key Features.....	3
What your camera includes.....	3
Computer System Requirements for Windows	3
A Quick Look at Your Camera	4
Charging Your Musicam for Use	5
Starting Your Camera	6
Camera Mode	7
Capturing Photos	11
Capturing Video	12
Webcam Mode.....	13
MP3 Mode.....	13
Installing SD Memory Card	13
Software Installation.....	16
Everything you need to get the most from your photos	20
Download photos to your PC	22
Viewing Videos	25
Using your Camera as a Webcam	25
Music Express Software installation.....	28
Using "Music Express" software.....	35
My Music Player Mode.....	41
Maintenance of Your Digital Camera	43
Sakar Warranty Card	43
Appendix A: Technical Specifications	43
Appendix B: Troubleshooting	44

Introduction

Thank you for purchasing the 44090 Digital Camera and MP3 Player. Everything you need to take quality digital photos is included with your device. Please read this manual carefully FIRST in order to get the most out of your digital camera.

Key Features

- 1.3 MegaPixel Digital and Video Camera 320 x 240
- 1.1 Inch Color LCD monitor
- SD Memory Card Slot only for MP3 device which accepts SD and MMC compatible memory cards from 32MB up to 1GB.
- **PhoTags Express** software for downloading photos and videos from your Digital Camera, managing and enhancing your photos, printing, sending photos by e-mails and much more
- **WebCam Express** software to use your Digital Camera as a webcam for live chat or creating videos and taking snapshots
- **Music Express** software to move your favorite songs from your computer to your MP3 for you to listen to wherever you are and whenever you want.

What your camera includes

- Digital Camera and MP3 Player (2 in 1)
- PhoTags Express, WebCam Express, Music Express and driver installation CD
- USB cable
- User's Manual
- Earphones
- Necklace
- Warranty card

Computer System Requirements for Windows

To be able to download photos and videos to your PC you will need the following minimum configuration:

- Pentium processor or above with Windows 2000 or XP.
- 130 MB free disk space, 128 MB RAM,
- Available USB Interface
- CD-ROM Drive
- Recommended screen resolution 1024 X 768 pixels or higher.
- 16-bit color or higher display adaptor.

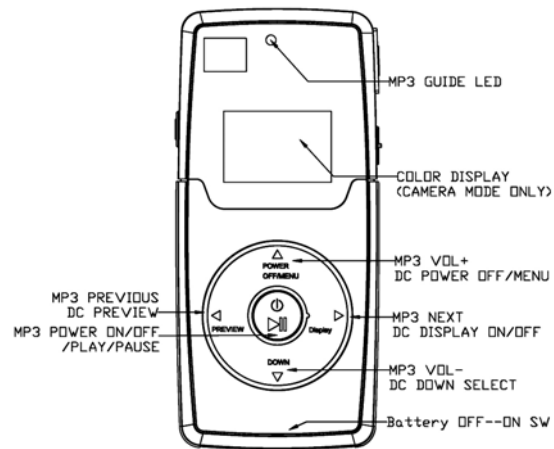
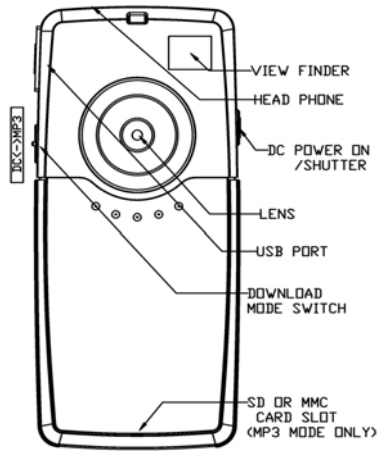
Caution:

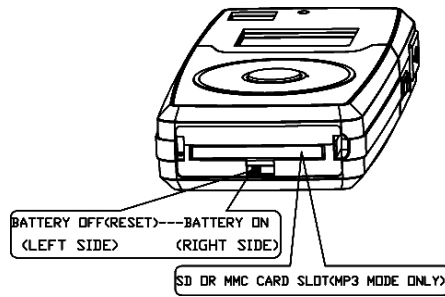
- Formatting will delete all the data on the SD Memory Card.
- Do not remove the SD Memory Card during formatting as this may damage the card and render it unusable.
- Formatting will delete protected data too.
- SD Memory Cards formatted on a PC or device other than the camera cannot be used. Be sure to format the card with

the camera.

- When you switch off the battery OFF-ON switch all the data in the built-in memory will be deleted.
- After taken photos, we recommend always downloading your photos to your computer as soon as possible to prevent unintentional data loss.
- We strongly suggest not to use mp3 player and camera at one time, as this will lead to unstable power supply.

A Quick Look at Your Camera

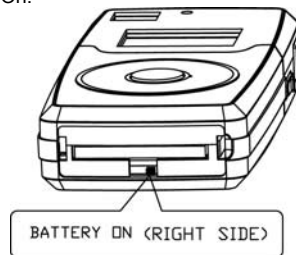




Charging Your Musicam for Use

Built-in Battery

Your camera uses a built-in Lithium battery. When the Battery On/Off switch is On.



the USB port serves as a charger for the battery. To charge the battery, simply connect the device via the USB cable to your PC, the camera screen will light up. In the charging period the screen will continue to light up. Please note that you can not power off the screen while the camera is connected to the USB port. Once unplugged, the camera will power off automatically, simply press the Power/Shutter button on the left side of the camera to start the camera.

If the battery power is low, the LED light will flicker (MP3 mode) or low battery will display on the screen (camera mode) and the device will power off. Should this occur, download your photos to your PC as soon as possible, and then charge the device. Charging time is around 3-4 hours.

WARNING:

- Before starting to take photos, please test the device's functioning in order to avoid disappointing results. Should the device fail to work, please contact us immediately.
- Static Electricity may affect your device by powering it off. To restart, simply power on again.
- Shifting the Battery On/Off switch to Off will cause any photos saved in the camera to be deleted from memory.

NOTE: If you do not intend to use your musicam for an extended

period, leave the switch in the Off position, this will save the energy left in the battery.

Battery Capacity Icons:

An icon will appear on the top right corner of your LCD screen, showing the amount of battery power available.



more than 70% power



35%-70% power



5%-35% power

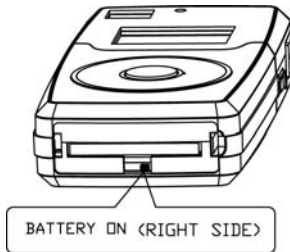


less than 5% power

1. the surface of the camera.

Starting Your Camera

1. Shift the Battery On/Off switch to On.



2. Hold the Camera with the LCD screen facing you and press the Power/Shutter button on the left side of the camera to start the camera. Press the power Off/ menu button for more than 3 seconds to turn the camera off. When the device is on, you can take photos.

When your device is connected to your PC, there are two modes available.

The switch to move between the 2 modes is found on the right side of the camera: DC Camera or MP3.

DC Camera mode:

When the mode switch is set to Camera mode (down), you can

take photos and videos, download them to your PC, or use the device as a webcam. All MP3 functions will be disabled in this mode.

MP3 mode:

When the mode switch is set to MP3 (up), the device enters Mass Storage (MSDC) mode. All Digital Camera functions except for taking photos will be disabled, and you can now download music or other files onto your SD card.

Note: When you pull out the USB cable, the device will power off.

Reset Function

If your device does not function properly, you can use the Battery On/Off button at the base of the camera next to the SD Card slot, to reset it. Simply switch the Battery off and then on again. Please note that resetting will cause any photos stored in the device's memory to be deleted.

Important note: Please download all photos before resetting your device.

Camera Mode

In order to download the photos and videos captured with this camera you need to install the PhoTags Express, WebCam Express and camera specific driver for this device. The instructions to install this software are explained further on in this manual.

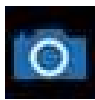
Now that your device is powered on you can enter the Main Menu by pressing the Menu button (top arrow on the dial). You can navigate this menu by pressing the Down button to flip through the various menu items.

Press the Power/Shutter button on the left side of the camera in order to select an item and enter the sub-menu for that item.

Pressing the Menu button leads you to this Main Menu screen:



Below is an explanation for each of the Submenus on the Main Menu.



Camera Submenu

Press the Menu button to enter the Main Menu, and press the Power/Shutter button to select the Camera Submenus. Upon entering the Camera Submenu, you can choose between the following options:



Take Photo



Self-Timer



AVI (Video)



Continuous Capture

Press the Shutter button to toggle through the various options within this submenu, and the Menu button to select the mode of your choice. The LCD screen will show your choice with a symbol in the upper left corner.



Camera



Self-Timer



Video (AVI)



Continuous Capture



Resolution Modification Submenu

Press the Menu button to enter the Main Menu, press the Down button until the Resolution Modification icon is selected and then press the Power/Shutter button to select this submenu.

Press the Power/Shutter button to toggle between the different resolution options, and press the Menu button again to select and save the desired resolution. Options within the Resolution Modification Submenu are as follows:



SVGA (1280x1024)



VGA (640x480)



QVGA (320x240)

Note: Clearer photos will be taken at higher resolution, however low resolution will allow you to take many photos at one time.



Compression Rate Submenu

Press the Menu button to enter the Main Menu, press the Down button until the Compression Rate icon is selected and then press the Power/Shutter button to select this submenu. Press the Power/Shutter button to toggle between the different compression rate options, and the press the Menu button again to select and save the desired compression. Options within the Compression Rate Submenu are as follows:



Non-Compression Mode



Compression Mode



Frequency (Anti-Flicker) Submenu

Press the Menu button to enter the Main Menu, press the Down button until the Frequency icon is selected and then press the Power/Shutter button to select this submenu. Press the

Power/Shutter button to toggle between the frequency options, and the Menu button to select the desired frequency. Options within the Frequency Submenu are as follows:



50Hz



60Hz

Note: 60Hz is suitable for the U.S. and Asia, and 50Hz for Europe and Japan.



Delete All Submenu

Press the Menu button to enter the Main Menu, press the Down button until the Delete All icon is selected and then press the Power/Shutter button to select this submenu. Upon entering this submenu, you will be shown the following screen, asking if you wish to Delete All of the photos in the camera. Press the Down button to move between options, select Yes to Delete All, or No to Cancel. Press the Power/Shutter button to confirm your choice.



Delete Individual Photos

When the camera is in the Camera Playback Mode, you can delete the last photo taken.

Press the Shutter button on the left side of the camera.
Press the "Preview" left dial arrow for the last photo taken to appear on the LCD screen.
Now press the "Power Off/Menu" (up arrow on dial) mode button and the following screen will appear:



Use the Down arrow to toggle between the Yes or No choices - Yes to delete the photo currently viewed, or No to cancel.
Press the Shutter button to activate your choice.

Capturing Photos

TAKING INDIVIDUAL PHOTOS



You can compose your shot using the LCD screen. Hold the camera steady and press and hold the shutter button. A beep will sound indicating that the photo has been taken.

After each photo is taken the numbers of photos left to shoot at this resolution is displayed at the bottom left of the LCD screen. If the level of brightness is too low, the message "Too Dark" will appear on the LCD screen and two quick beeps will sound, indicating that the photo cannot be taken.

CONTINUOUS SHOT



Your camera can be set up to take 3 photos in one continuous shot.
Select the Continuous shot mode from the camera menu options on the LCD screen.
Select the Menu (up arrow) mode. When the continuous shot icon appears in the top left corner you can now take your shots.
Press the Shutter button once and the camera will take 3 consecutive shots saved in jpeg format.

TIMER



Your camera can be set up with the timer mode to take a photo after 10 seconds.
Select the Timer shot mode from the camera menu options on the LCD screen.
Select the Menu (up arrow) mode. When the timer icon appears in the top left corner you can now prepare your shot.
Press the Shutter button once and the timer will be activated to take the photo after 10 seconds.

Sleep Mode (Automatic Power-Saving)

The digital device will go into Sleep Mode automatically after approximately 30 seconds of inactivity. This mode uses low energy consumption in order to prolong the device's battery life. To reactivate the device, simply press the Power/Shutter button.

For information on how to work with your photos, please see the Software Installation section in this manual.

Capturing Video

In order to capture Videos with this Camera the camera has to be set to the Video mode as explained above.



Once in the Video mode, press the shutter button for the camera to start capturing an AVI video. A clock counter on the bottom right corner of the LCD screen will begin to count. The video is now being captured. To end the video capture press the shutter button again. The Video has now been captured and is ready to be downloaded from the camera to your computer.

See the "Get Photos" section of the software installation for using your Photags Express software application to download photos in JPEG format and videos in AVI format from your camera to your PC.

Note: When downloading Photos or videos from your camera the switch on the right hand side of the camera needs to be down in the Camera position.

Webcam Mode

In order to use your device as a webcam, you first need to install the WebCam Express software on your PC. Please see the Software Installation section in this manual for further instructions.

Once the software has been installed, connect your device to your PC and ensure the Mode switch is set to DC.

MP3 Mode

In order to use your device as a MP3 Player, you first need to install the Music Express software on your PC. Please see the Software Installation section in this manual for further instructions.

Installing SD Memory Card

This Musicam device uses an SD Card to store music. The music can be moved from your computer to the SD Card by using the Music Express application installed from the CD installation disk. For further details on how to move music from your computer to the SD Card in your MP3 Player see the

"Music Express" section of this manual.
The MP3 Player has a memory card slot that enables you to insert any "SD" compatible memory card.
The amount of music that can be enjoyed while using this device depends on the capacity of the card inserted. The greater the memory of the card the more songs you can add.
Adding a memory card will allow you to increase the capacity of your music.

NOTE: SD memory card is required for normal use.

Installing the SD Memory Card:

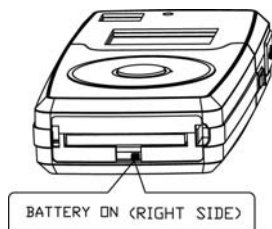
1. Locate the Memory card slot (on the bottom of the camera).
2. Insert the memory card into the slot, label side up and metal contacts down.
3. Push the card in until you feel it "click" into position. The top of the card should be flushed with the surface of the camera.



Connecting and Using the MP3 Player with the Music Express application for the first time

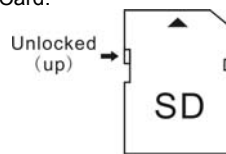
When using the MP3 Player for the first time, follow these instructions carefully.

1. Make sure that Music Express software has been installed to your desktop
2. Make sure that the device is NOT connected to the computer
3. Make sure that the switch on the bottom is in the ON position.



4. Make sure that the mode button on the right side is in the MP3 (up) position
5. Make sure that you have unlocked your SD/MMC

memory Card.



6. After unlocking your memory card insert your SD/MMC memory card into the SD slot at the base of the device.
7. Press the On/Play/Pause button in the center of the dial for 4-5 seconds
8. A red LED light will begin to flash
9. You are now in MP3 mode and if you have music on the SD Card you should be able to hear it
10. Now open the "iConcepts Music Express" icon on the desktop
11. Carefully follow the instructions on the registration screens that appear on your desktop
12. Only connect the device to the computer when the application on the desktop tells you. Please make sure the red LED light is still on before connecting. If it is not, repeat step 7 and 8.
13. Once registered the "Music Express" application will open with the picture of the device appearing on the top right
14. Music may now be added to or removed from the MP3 Player using this application.

Using your MP3 Player

Press and hold down the Power On/Off/ Play button in the center of the dial for 4-5 seconds to turn on your MP3 player. A red indicator light will light up. When this red light appears this is the indication that you are in the MP3 Player mode.

The music that is now stored on the SD Card will automatically begin to play. Plug in the earphones or attach the device to speakers to hear your music.

Click the Power On/Off/Play again to Pause music (the indicator light will keep flashing), and then press the same button to continue playing.

Use the Previous (left arrow) or Next (right arrow) buttons to select the next song.

To switch your MP3 player off, click the Power On/Off/ Play button to enter into Pause music or press and hold down the Power On/Off/ Play for more than 3 seconds to enter into Sleep Mode , and press the Power On/Off/ Play button again for 4-5 seconds. The indicator light will switch off.

When there is no card in the slot, power on the MP3 player, the red indicator light will flash quickly. To power off the MP3 player, press and hold down Power On/Off/Play button for 4-5

seconds.

Volume control

To increase the volume press the up arrow on the dial, and to lower the volume press the down arrow on the dial.

Sleep Mode (Power-Saving)

The sleep mode uses low energy consumption in order to prolong the device's battery life.

In order to enter this mode while the MP3 player is playing music, simply press and hold down the Power/On/Off/Play button for 3 seconds. The red indicator LED will change from a flashing light to constant. When this happens release the button immediately.

In order to reactivate the device, simply press the Power/On/Off/Play button again. The device will then continue to play the music from where it was previously paused.

Card Compatibility

Please ensure the card inserted into your MP3 player is in FAT32 format in order to allow for compatibility with the device.

Software Installation

NOTE: Before attempting to install the software, make sure that you do not have the camera's USB cable attached to your computer. This will affect the install process and can cause a failed installation of the camera software and drivers.

This Musicam device can be used as a Digital Camera as well as a MP3 Player.

In order to install the Software and drivers to download and edit the photos and music for this device, you need to install the CD installation disk.

Insert the installation CD into your CD-ROM drive. A Menu screen will automatically appear.



To Install the Software and Driver for the Digital Camera select the "Install PhoTags and WebCam Express software" button. This will begin the installation of the software. Please follow the instructions carefully to install this software to your computer.

DO NOT PLUG YOUR CAMERA INTO THE USB PORT UNTIL THE SOFTWARE INSTALLATION HAS BEEN COMPLETELY INSTALLED.

PHOTAGS EXPRESS

Software & Camera Driver Installation

After choosing the "Install PhoTags and WebCam Express software" button the PhoTags Express software will begin to install.

On the "Install your camera software" screen, select your camera model from the drop down list and click the "Install" button to install PhoTags Express followed by the installation of PhoTags WebCam Express and your camera driver.



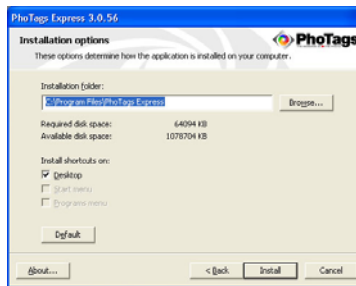
On the “PhoTags Express” screen, click the “Next” button.



Please review the license terms and click the “Agree” button to continue.



Let the “PhoTags Express” installer create the folder where the program will be installed to, and then click “Install”.



Click “Finish” to let the “PhoTags Express” installer finish the installation program.



This will automatically launch the Install shield for the camera driver. Click “Next” to continue.



Follow the Setup screens that appear to install the driver for this camera .

Once the program has finished installing you will be asked to restart your computer. Please do so.



Congratulations!! You have successfully installed the “PhoTags Express”, “WebCam Express” software and the Camera Driver.

To use the WebCam Express software see the “Using your Camera as a Webcam” section.

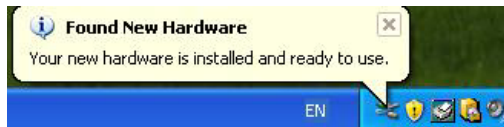
To install the Music Express software see the “Installing Music Express software” section

Everything you need to get the most from your photos

The “PhoTags Express” software that is installed on your computer allows you to edit existing photos that you have on your computer as well as the photos that you have captured with your camera.

Make Sure that the camera is in the Digital Camera Mode (button on the right hand side must be in the down position). Plug one end of the USB cable into the USB port of the camera. Plug the other end of the USB cable into a USB port on your computer.

Important: For WinXP users - Do not open the software until you see the “Your new hardware is installed and ready to use” pop-up box on the toolbar. If you do not see this message before you plug in your camera, the camera will not function properly.



If the Camera is off it will automatically be turned on when the USB cable is properly connected and the Transfer mode icons will appear on the LCD screen.

Click the “PhoTags Express” icon that appears on your desktop to open the “PhoTags Express” Software.



From the Main Menu screen that appears, select the “**Select Photos**”, “**Enhance Photos**” or “**Add Captions**” buttons. You can use these features to edit your photos:



Manage your photos by creating countless unique photo collections without duplicating any photos. Burn CD's of any folders for backup and storage.

Enhance your photos; Auto Enhance, Crop, Correct Red Eye, Manually Adjust and add Special Effects.

Add Active Captions- add Text Captions, Frames, Shapes, Keywords... and more that can be viewed or hidden any time.

Locate and Organize your photos and collections- Search by Captions, Category, Keyword or Date - directly from the operating system of your computer.

Share your photos via E-mail, Local Printing and Create HTML web pages for uploading online.

Create Calendars, two-sided **Greeting Cards and**

Postcards on standard photo paper... You can purchase **Albums and Video CD**, two additional workshop projects online at anytime and these will be automatically activated in "PhoTags Express".

Create **Photo Albums and Slide Shows** on CDs that can be viewed on your PC and VCD's for viewing on your TV using your DVD player. Add background music to your slideshow.



How to purchase additional "Workshop" projects

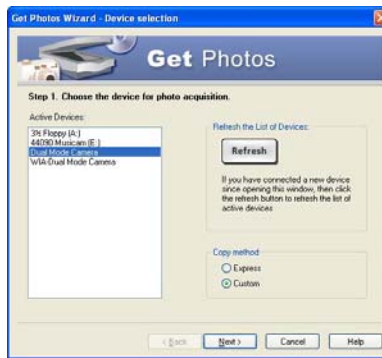
In addition to the free Calendars, two-sided Greeting Cards and Postcards Workshop projects, you have the ability to purchase two additional Workshop projects: "Albums" and "Video CD" online, at anytime.

1. To purchase the "Workshop Project" simply click the one you want and you will be referred to an online website where you can purchase them.
2. Once you purchase the "Workshop projects" they will be automatically activated in the software.

Download photos to your PC

Transfer Photos and video images from your camera to your PC using PhoTags Express.

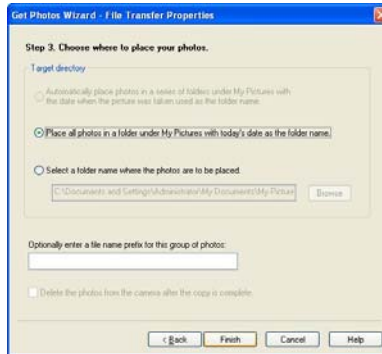
Select the "Get Photos" button from the top of the PhoTags Express Main Menu screen.
The Get Photos Wizard opens.



Select the “Dual Mode Camera” option in the Active Devices window on the left, and select the “Custom” copy radial button in the Copy methods box. Click the “Next” button.

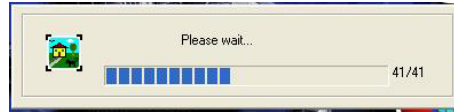


Add Active Captions to your pictures. You can add a date, keywords, categories and more. Click “Next” to continue.



Choose where to place your photos and videos. The default is to place all photos and video into a folder under the C:\My Documents\ My Pictures folder with the date the photos were taken as the folder name.

Click the “Finish” button to start the download process.



A photos download progress bar appears showing the number of media (videos included) downloading to your computer.

All the media – Photos and Videos on your camera are now downloaded to your computer. Open the “Select Photos” mode of Photags Express to view the thumbnails for all the media.



You may now use PhoTags Express to edit your photos, create collections and Burn CD's.

To learn more of how to get the most out of your PhoTags application select the “Show Me How” or the “Help” Quick Start Guide button found on the top right of the screen.

Express Copy Method

Select this option if you want to have all the images transferred to the PC without the option to select which photos you want to transfer. In this mode you will not see a preview of the images

transferred. For more information please refer to the Quick Start guide in PhoTags Express.

Viewing Videos

Make sure that your camera is connected to your computer with the USB cable. Open any application that will enable you to view video files (for example Windows Media Player).

Videos created and downloaded should be sitting in the C:\My Documents\My Pictures\{date} folder. Videos are saved in AVI format. Double click on a video with the avi extension. The video will appear in the "Main Window" in the actual size and will begin to play automatically. To replay the video, use the video controls. Once all the Photos and Videos have been downloaded to the computer you may delete them from the camera thereby preparing your camera to take more photos and videos to be downloaded

Using your Camera as a Webcam

Connect your camera to your computer using the USB cable attached. Please make sure the button on the right hand side of the camera is in the Camera (down) position.

Capturing AVI with WebCam Express

Now that you have WebCam Express software installed, you can use it to capture short movies called AVI video files or take JPEG snapshots. The length of time you can record an AVI while the camera is connected to your computer will vary, depending on how much hard drive space you will use to save the file. This is done through the PhoTags WebCam Express program. Please note that these AVI video files take up a lot of hard drive space. This next section will walk you through capturing an AVI file.

1. Double-click the "**WebCam Express**" icon that is on your desktop to launch the "**WebCam Express**" program. A webcam icon will appear on the LCD screen of your camera.



2. Your camera now begins to function as a webcam

3. Adjust your Camera/Webcam to the desired position.
The computer screen will display what the Webcam "sees".
4. To add audio to your video, plug a microphone into your computer.



5. Click the "**Capture**" button to start recording the video.
The recording elapse time will appear under the video.



6. Click the "**Pause**" button to hold the recording. To continue recording click the "**Capture**" button again.
7. To finish recording click the "**Stop**" button.
8. The videos will be automatically saved into a default directory (My Documents/ My Pictures/ My WebCam).



Capturing Photos:

You can also take snapshots with your Webcam.
Your Webcam **NEEDS** to be connected at all times to the computer in order to capture the photos.

There are 2 methods to capture and save photos taken with your WebCam Express software.

Method 1 – Capture Mode:

1. Position the Webcam so that it is pointing in the direction of the object you wish to photograph.
2. The “image” appears in the application’s view screen.
3. Select the “**Capture**” mode button at the top of the application screen
4. Click the “**Snapshot**” button on the top left of the view screen.
5. The photo will be saved automatically as a jpeg picture in the My Documents/ My Pictures/ My WebCam folder on your computer.
6. You may now edit this photo by opening the Photags Express application.
From the Main Menu, select the “Select Photos” mode, and from the directory tree on the left of the thumbnails screen, select the My WebCam folder where the photo has been saved.



Method 2 – Playback Mode:

1. After capturing an AVI video with your Webcam as explained above, select the “Playback” mode button at the top of the application screen.
2. You can now select the AVI video that appears on the left of the view screen.
3. Run the video by pressing the “**Play Video**” button.
4. While the video is running select the “**Snapshot**” button to take photo snapshots that are now saved as jpeg pictures.
5. The photo will be saved automatically as a jpeg picture in the My Documents/ My Pictures/ My WebCam folder on your computer.
6. You may now edit your photos with the “Photags Express” software application by selecting the Photags Express icon on the desktop, and from Main Menu that appears select the “Select Photos” mode.
7. From the directory tree on the left of the thumbnails screen open the “My WebCam” folder and select the photos you wish to edit using the software.

To learn more on how to capture JPEG snapshots from your Webcam or from your existing AVI movies, go to the “Take Snapshots” section in the Quick Start Help guide in the application.

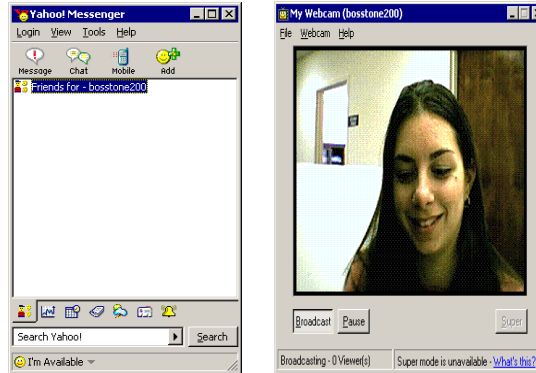
To learn how to change the User Settings, go to the “Set User Preferences” section in the Quick Start Help.

Webcam:

You can use this Webcam to chat with friends and family, sending live video feeds straight to them.

NOTE: In order to use this Webcam you must make sure that you have **YAHOO MESSENGER Ver 5.5 or later**.

1. Start Yahoo messenger.



2. Select the “Tools” listing on the top of the toolbar. Go to the drop down menu and select the listing for “Start My Webcam”.
3. You will see a window appear with your video that you are playing. Now people who have your Yahoo login name will be able to see your video.

Music Express Software installation

Your Musicam Device is also an MP3 Player. Music Express allows you to copy songs in an organized and user friendly way from your computer to the SD Card that sits in the SD Card slot of your device.

Note: Before you install the software please make sure that the device is NOT connected to the computer by the USB cord. If your camera is connected please DISCONNECT it now.

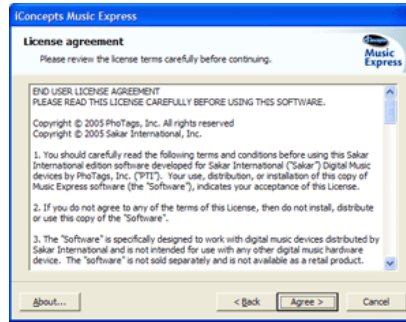
1. Insert the Software CD that came with your Musicam Digital Camera and MP3 Player into the CD-ROM drive. Make sure that your Digital Music Player is NOT connected to the computer.
2. A menu screen will automatically appear.



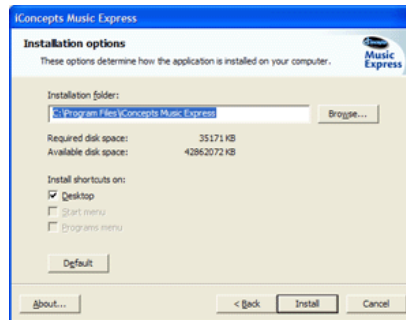
3. Select the "Install Music Express software" button to install the Music Express software.
4. On the "Music Express" screen, click the "Next" button.



5. Please review the license agreement and click the “Agree” button



6. Let the “Music Express” installer create the folder where the program will be installed to, and then click “Install”



7. Click “Finish” to let the “Music Express” installer finish the installation program.



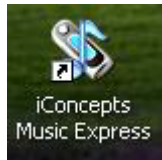
8. Congratulations!! You have successfully installed the "Music Express" software.

Digital Music Player Registration

Make sure that your Digital Music Player is NOT connected to the computer.

Note: The first time you open "Music Express" the wizard will open automatically requesting device installation.

1. To launch "Music Express", double click on the program icon on your desktop.



2. On the "Digital music player installation wizard" screen, click the "Next" button



3. Select your Digital Music Player model from the drop down list and click the "Next" button.



4. Insert a name for the Digital Music Player device and click the "Next" button.



5. Make sure that the button on the right side of the device is in the MP3 (up) position, and press and hold down the Power/On/Off/Play button for 4-5 seconds to power on the MP3 player, and then plug your Digital Music Player to the USB port.



6. Once the computer recognizes that you plugged your device, an "Install now" button will show, press it.




7. When the installation is done, a message will come up saying that the device has been successfully registered. You are now ready to use Music Express and all its features!

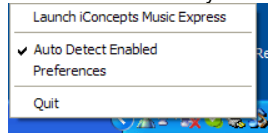


The next time you plug in your Digital Music Player device, it will automatically open "Music Express" and display its contents in "My music player" mode. (For more information please refer to the help file in the software.)

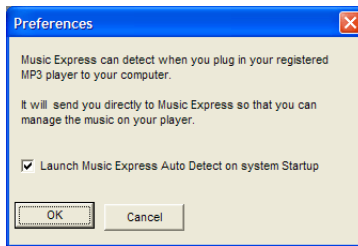
Device Auto-Detect

The Device Auto-Detect detects your Digital Music Player as soon as you plug it into the USB port. The "Music Express" software opens in "My music player" mode, displaying the contents of your Digital Music Player and allowing for upload of new songs. (Only Content that was uploaded through "Music Express").

The "Music Express" Auto-Detect icon  appears in the notification area on system startup.



To disable the Auto-Detect on startup, right click on the Auto-Detect icon in the notification area and press "Preferences" or press the "Preferences" button in "Music Express" main window and uncheck the check box.



To reset the Auto-Detect to launch at system start up do one of the following:

Right click on the Auto-Detect icon in the notification area, press "Preferences" and check the check box.

Click the "Preferences" button on the "Music Express" main window, choose the Auto-Detect tab and check the check box.

Press the "iConcepts Music Express" from the programs menu and choose "Launch Auto Detect".

Using "Music Express" software

Get Music Mode

Click the "Get Music" button on the "Main Menu" window or in any other mode to rip an audio or MP3 CD, to find music on your computer or to copy music from any removable drive.





Rip an Audio

This feature requires Windows XP.

Rip music from a music CD, copy it to your computer and add it to your music library.

1. Click the "Rip CD" button in the "Get music" mode.
2. Click the "Load CD" button to load the CD from the CD drive.

Note: The default name of the CD can be changed.

3. Mark the songs you want to rip (to choose all of the songs on the CD press the "Select all" button)
4. Press the "Browse" button to choose the folder you want to copy the songs to.
5. Choose a playlist to save the ripped songs in:
 - a. Create a new playlist.
 - b. Choose from an existing playlist.
 - c. Don't add songs to any playlist.
6. Press the "Rip CD" button to start the ripping process.



Find music on your computer

Scan your computer for music files and add them to your music library.

1. Click the "Find music" button in the "Get music" mode.
2. Select a search type:
 - a. Quick search- Search in "My music" folder. This is recommended.
 - b. Full search- Search all hard drives on this computer.
 - c. Custom search- Search a selected folder.
3. Add songs to a playlist:
 - a. Create new playlist.
 - b. Choose from an existing playlist.
 - c. Don't add songs to any playlist.
4. Click the "Begin search" button.
5. When the search is finished, the songs added will be listed in the text box.



Copy music from removable drive

Copy music files from any removable drive connected to your computer and add them to your music library.

1. Make sure the removable drive is connected to your computer.
2. Click the “Copy music from removable driver” button in the “Get music” mode.
3. Select the removable drive from the drives list.
4. Choose a playlist to add the songs to:
 - a. Create a new playlist.
 - b. Choose from an existing playlist.
 - c. Don't add songs to any playlist.
5. Click the “Begin search” button.
6. When the search is finished, the songs added will be listed in the text box.

My Music Mode

Listen, view and organize all of your music files in playlists using the My Music Mode.




Playlist

Click the “All music” playlist in the “My playlists” window to view all of the songs on your computer in the “View playlists” window on the right.

Create a new Playlist



1. Click the  Create button to create a new playlist
2. A dialogue box will appear; Insert a playlist name and press OK.

3. The new playlist will now be listed in the “My playlists” window.

Add music files to a Playlist

1. Select the music file/files you wish to add from the “All music” playlist or another existing playlist.



2. Click on the “Add music to playlist” button and choose the playlist you want the song to be in or drag the selected music file/files onto the playlist in the “My playlists” window you want the song to be in.

(In order to select more than one song press the CTRL button and select the songs you wish to add to the playlist.)

View songs in a playlist

View an existing playlist by clicking the playlist name from the “My playlists” window. The playlist will open on the right side in the “View playlist” window.

Play music file from playlist

Play a song from a playlist by double clicking on the song in the “View playlist” window or by choosing the song from the “View playlist” window and pressing the play button in the “Music player controls”. Once the song ends, the next song on the list will play.

Music Player Controls:



1. Play- play a selected song. When the song is playing, the Play button becomes a Pause button.



2. Pause- pause a selected song. To continue playing the song, click the Play button.




3. Stop- stop playing a song.




4. Playback slider– play a song from a specific point. The Playback slider indicates the playback progress of the selected item. You can move the slider and determine where to start playback.




5. Volume slider- control the volume level by moving the slider right to increase the volume or left to decrease the volume.


6.  Previous- play the previous song on the playlist.

7.  Next- play the next song on the playlist.

Change the order of songs in your playlist

Change the order of the songs by using the arrows:

1.  Move song up- move a selected song up in the playlist.

2.  Move song down- move a selected song down in the playlist.

Remove songs from playlist

Remove a selected song or a group of songs from the playlist.

1. Choose the song you wish to remove from the playlist.


(In order to select more than one song, press the CTRL button and select the songs you wish to remove.)

2. Press the  "Remove song" button.

Note: The song is removed from the playlist but not from your computer.

Song Properties


Modify song properties by adding Artist/Album/Genre information.

1. Click the  "Song properties" button, the properties window will open.

2. Add any information you wish to add or modify and press the OK button.


Rename an existing playlist

1. Choose the playlist you wish to rename.

2. Click the  "Rename playlist" button.

3. A dialogue box will appear; Insert the new name you wish to give the playlist and press OK.

Delete a playlist

1. Choose the playlist you wish to remove.
2. Click the  "Delete playlist" button.
3. A window will appear asking you to confirm your wish to permanently delete the playlist. If you wish to delete the playlist press "Yes", if not press "Cancel".

The "All Music" Playlist

The top playlist in the "My playlists" window is a default playlist called "All Music". It contains all the music on your computer, and cannot be deleted.

Note: The "All music" playlist can be sorted by Title/Artist/Length/File name. Click on the column header you wish to sort by.

To update it go to the "Get Music" mode and click the "Find Music" button.



Create MP3 CDs. This feature requires Windows XP.

Burn an MP3 music CD from a playlist you created in "My music" mode.

1. Choose the "Create MP3 CD" button in the main menu or in any mode on the bottom left.
2. Choose a playlist from the playlists list and press the "Next" button.
3. Mark the songs you want to burn from the playlist.
4. Make sure you have a blank CD in the drive before pressing the "Begin burn" button.
5. Once CD is ready a message will come up saying "Your CD has been successfully created".



Create Audio CDs This feature

requires Windows XP.

Burn an audio music CD from a playlist you created in "My music" mode.

1. Choose the "Create audio CD" button in the main menu or in any mode on the bottom left.
2. Choose a playlist from the playlists list and press the "Next" button.
3. Mark the songs you want to burn from the playlist.

4. Make sure you have a blank CD in the drive before pressing the "Begin burn" button.
5. Once CD is ready a message will come up saying "Your CD has been successfully created".

My Music Player Mode

The "My Music Player" mode lets you view, listen, upload, download and remove music files and playlists from and to your Digital Music Player.

As soon as you plug your Digital Music Player to the computer, the "My music player" mode will appear, displaying the contents of your Digital Music Player and allowing for upload of new songs. (Only the content that was uploaded through "Music Express" will be displayed.)



Add music files to your Digital Music Player portable device

In order to choose music to upload onto your Digital Music Player you need to drag the music from the "My playlists" window onto the "View playlist" window.

You can either upload a whole playlist by dragging the playlist from the "My playlists" window onto the "View playlist" window; Or you can upload a single song by opening the playlist in the "My playlists" window by clicking on the "plus" sign on the left of the playlist and dragging the specific song from the "My playlists" window onto the "View playlist" window.

Save songs as Playlist

After you transferred the selected songs to the Digital Music Player you can save the songs as a new playlist.

1. Press the "Save as playlist" button.



2. Insert a new playlist name.
3. The new playlist will appear in the "My playlists" window.

Play songs transferred to your Digital Music Player

Play a song that has been transferred to your digital music player by double clicking the song in the "View playlist" window or by choosing the song from the "View playlist" window and pressing the "Play" button in the "Music player controls". Once the song ends, the next song on the playlist will play.

Set compression

To increase the number of songs on your digital music player can store, set the compression rate before you start uploading your music files.

The lower the compression, the higher the music quality but fewer music files will fit on the digital music player.

The higher the compression, the lower the music quality but more files will fit on the digital music player.

Note: When using compression, copying the files to the MP3 player will be slower.

1. **No compression**- the music file is copied straight from your computer without compression.
2. **Low compression**- the music file is less than half its original size allowing for more than double the amount of music.
3. **Medium compression**- the music file is a third its original size allowing for three times the amount of music.
4. **High compression**- the music file is a quarter of its original size allowing for four times the amount of music.

Clear songs from Digital Music Player device

In order to clear (delete) all songs on the digital music player,



press the "Clear songs from music player" button.

Maintenance of Your Digital Camera

Your 2 in 1 Digital Camera and MP3 Player is a delicate instrument- please handle it with care.

Sakar Warranty Card

This warranty covers for the original consumer purchaser only and is not transferable. Products that fail to function properly **UNDER NORMAL USAGE**, due to defects in material or workmanship. Your product will be repaired at no charge for parts or labor for a period of one year.

What Is Not Covered By Warranty:

Damages or malfunctions not resulting from defects in material or workmanship and damages or malfunctions from other than normal use, including but limited to, repair by unauthorized parties, tampering, modification or accident.

What To Do When Service Is Required:

When returning your defective product (postage pre-paid) for service, your package should include:

Copy of **original** bill of sale

A detailed written description of the problem.

Your return address and telephone number (Daytime)

MAIL TO ADDRESS BELOW:

Sakar International
Attention: Service Department
195 Carter Drive
Edison, NJ 08817
Tel: 732-248-1306

You may also visit www.sakar.com for further assistance if necessary or call our tech support department toll free at (877) 397-8200.

Appendix A: Technical Specifications

Image Sensor	1.3Mega Pixels CMOS Sensor
Image Resolution	1280x1024, 640x480, 320x240
LCD Display	Color LCD
Aperture	F=3.0
External Memory	SD / MMC card
Lens	f=8.3mm
File Storage	DC: 64M bit SDRAM (8MB), MP3: SD or MMC Card

Shooting Mode	Single Shot, Self-timer Shot, Movie (QVGA 320x240): AVI format, 6 frame/sec		
Exposure	Automatic		
White Balance	Automatic		
Shutter Speed	Electronic Shutter, 1/6-1/8,000 sec		
File Format	DC: JPEG/AVI MP3: MP3, WMA, ASF		
Storage capability	Resolution	Hi	Lo
	L (1280x1024)	15	30
	M (640x480)	46	92
	S (320x240)	138	276
PC-Camera	640x480: 8 frame/sec, 320x240: 6-15 frame/sec		
Interface	DC: USB 1.1, MP3: USB2.0		
Depth of field	60cm ~infinity		
Operating Systems	WIN2000/XP		

Appendix B: Troubleshooting

Q: I have taken photos, but my computer says "No photos in camera." What do I do?

First, ensure that you have taken photos with your camera. Press the shutter button a few times to take some sample photos and try again. If you still get a no photos error, this indicates that the software was not installed correctly or your computer may not meet the minimum system requirements.

System Requirements:

First, ensure that you have at least a Pentium II 300 MHz, AMD

Athlon 300 MHz, or a Celeron 400 MHz or higher as well as at least 128MB of RAM. Please note that the older AMD K6 processors will not work. More information about determining your computer's specifications can be found in the General Computer Information section. If you have determined that you have pictures in your camera and you meet the system requirements, follow the steps below to reinstall the software.

Software Re-installation

First install the software. Click on Start, Settings, Control Panel and Add/Remove programs.

You will need to remove PhoTags Express. After removing it, restart your computer. If your camera is connected, disconnect it.

Now reinstall the software. Insert the CD that came with your camera. It should automatically run the installation.

Restart the computer.

Once your computer is back up, plug the camera into your computer's USB port.

Right-click on the "My Computer" icon. Select Properties. Click on hardware and then Device Manager.

If the camera is installed correctly, there will be a category listed for "Imaging Devices" and clicking on the "+" next to it should reveal your camera. If not, you will likely see "Digital Still Camera" under "Other Devices" with a brightly colored marking next to it indicating it is not functioning correctly.

If you are running Windows 2000 or XP: Right click on the non-functioning device and select uninstall. If a warning pops up, press OK.

Restart your computer again. Your camera is now successfully installed.

Q: How do I make sure I don't lose important pictures?

Your camera uses SDRAM memory, which requires a constant electric current to store your photos.

Should your camera lose power (for instance if the battery dies or run out of power) all stored pictures will be lost. We recommend always downloading your photos to your computer as soon as possible to prevent unintentional data loss. Photos and videos stored on an SD memory card will not be lost regardless of any change in battery power.

Q: If I have a MAC, will the device work?

Unfortunately, the system requirements for our digital cameras and webcams require a Windows operating system. There is no Mac driver available and no current plan to develop

Q: If the webcam does not work:

Make sure you have connected the webcam correctly into an available USB port or hub.