

RCA

u s e r
m a n u a l



MC2601
MC2602

It is important to read this instruction book prior to using your new product for the first time.

FCC Information

EN

FCC Information

This device complies with Part 15 of the FCC Rules. Operation is subject to the following two conditions: (1) This device may not cause harmful interference, and (2) this device must accept any interference received, including interference that may cause undesired operation.

In accordance with FCC requirements, changes or modifications not expressly approved by Thomson Inc. could void the user's authority to operate this product.



This equipment has been tested and found to comply with the limits for a Class B digital device, pursuant to Part 15 of FCC Rules. These limits are designed to provide reasonable protection against harmful interference in a residential installation. This equipment generates, uses, and can radiate radio frequency energy and, if not installed and used in accordance with the instructions, may cause harmful interference to radio communications. However, there is no guarantee that interference will not occur in a particular installation. If this equipment does cause harmful interference to radio or television reception, which can be determined by turning the equipment off and on, the user is encouraged to try to correct the interference by one or more of the following measures

- Reorient or relocate the receiving antenna.
- Increase the separation between the equipment and receiver.
- Connect the equipment into an outlet on a circuit different from that to which the receiver is connected.
- Consult the dealer or an experienced radio/TV technician for help.

Also, the Federal Communications Commission has prepared a helpful booklet, "How To Identify and Resolve Radio TV Interference Problems." This booklet is available from the U.S. Government Printing Office, Washington, DC 20402. Please specify stock number 004-000-00345-4 when ordering copies.

This Class B digital apparatus complies with Canadian ICES-003.

Cet appareil numérique de la class B est conforme à la norme du NMB-003 du Canada

 <p>THE LIGHTNING FLASH AND ARROW-HEAD WITHIN THE TRIANGLE IS A WARNING SIGN ALERTING YOU OF "DANGER OF VOLTAGE" INSIDE THE PRODUCT.</p>	<p>CAUTION RISK OF ELECTRIC SHOCK DO NOT OPEN</p> <p>CAUTION: TO REDUCE THE RISK OF ELECTRIC SHOCK, DO NOT REMOVE COVER (OR BACK). NO USER-SERVICEABLE PARTS INSIDE. REFER SERVICING TO QUALIFIED SERVICE PERSONNEL.</p>	 <p>THE EXCLAMATION POINT WITHIN THE TRIANGLE IS A WARNING SIGN ALERTING YOU OF IMPORTANT INSTRUCTIONS ACCOMPANYING THE PRODUCT.</p>
SEE MARKING ON BOTTOM / BACK OF PRODUCT		

WARNING: TO PREVENT FIRE OR ELECTRICAL SHOCK HAZARD, DO NOT EXPOSE THIS PRODUCT TO RAIN OR MOISTURE.

The descriptions and characteristics given in this document are given as a general indication and not as a guarantee. In order to provide the highest quality product possible, we reserve the right to make any improvement or modification without prior notice. The English version serves as the final reference on all products and operational details should any discrepancies arise in other languages.

FCC Information

EN



RCA
MC2601

Equipment tested for
compliance as a
complete unit



RCA
MC2602

Equipment tested for
compliance as a
complete unit

Product Registration

Please fill out the product registration card and return it immediately. Returning this card allows us to contact you if needed.

For Your Records

Keep your sales receipt for proof of purchase to obtain warranty parts and service.

In the event that service should be required, you may need both the model number and the serial number. In the space below, record the date and place of purchase, and the serial number:

Date of Purchase

Place of Purchase

Serial No.

Service Information

This product should be serviced only by those specially trained in appropriate servicing techniques. For instructions on how to obtain service, refer to the warranty included in this Guide.

Technical Specification

Product: Digital Audio Player

Brand: RCA

Model: MC2601/ MC2602

Electrical Consumption

Lithium polymer battery (internal)

IMPORTER

Comercializadora Thomson de México, S.A. de C.V.

Álvaro Obregón No. 151. Piso 13.

Col. Roma. Delegación Cuauhtémoc

C.P. 06700. México, D.F.

Telefono: 52-55-11-020360

RFC: CTM-980723-KS5

Important Safety Instructions

EN

PLEASE READ AND SAVE FOR FUTURE REFERENCE

Some of the following information may not apply to your particular product; however, as with any electronic product, precautions should be observed during handling and use.

- Read these instructions.
 - Keep these instructions.
 - Heed all warnings.
 - Follow all instructions.
 - Do not use this apparatus near water.
 - Clean only with dry cloth.
 - Do not block any ventilation openings. Install in accordance with the manufacturer's instructions.
 - Do not install near any heat sources such as radiators, heat registers, stoves, or other apparatus (including amplifiers) that produce heat.
 - Do not defeat the safety purpose of the polarized or grounding-type plug. A polarized plug has two blades with one wider than the other. A grounding type plug has two blades and a third grounding prong. The wide blade or the third prong is provided for your safety. If the provided plug does not fit into your outlet, consult an electrician for replacement of the obsolete outlet.
 - Protect the power cord from being walked on or pinched particularly at plugs, convenience receptacles, and the point where they exit from the apparatus.
- Only use attachments/accessories specified by the manufacturer.
 - Use only with the cart, stand, tripod, bracket, or table specified by the manufacturer, or sold with the apparatus. When a cart is used, use caution when moving the cart/apparatus combination to avoid injury from tip-over.



Portable Cart Warning

- Unplug this apparatus during lightning storms or when unused for long periods of time.
- Refer all servicing to qualified service personnel. Servicing is required when the apparatus has been damaged in any way, such as power-supply cord or plug is damaged, liquid has been spilled or objects have fallen into the apparatus, the apparatus has been exposed to rain or moisture, does not operate normally, or has been dropped.

Important Safety Instructions

EN

- **ADDITIONAL SAFETY INFORMATION**
- Apparatus shall not be exposed to dripping or splashing and no objects filled with liquids, such as vases, shall be placed on the apparatus.
- Always leave sufficient space around the product for ventilation. Do not place product in or on a bed, rug, in a bookcase or cabinet that may prevent air flow through vent openings.
- Do not place lighted candles, cigarettes, cigars, etc. on the product.
- Connect power cord only to AC power source as marked on the product.
- Care should be taken so that objects do not fall into the product.
- Do not attempt to disassemble the cabinet. This product does not contain customer serviceable components.
- **IF YOUR PRODUCT OPERATES ON BATTERIES, adhere to the following precautions:**
 - A. Any battery may leak electrolyte if mixed with a different battery type, if inserted incorrectly, or if all batteries are not replaced at the same time.
 - B. Any battery may leak electrolyte or explode if disposed of in fire or an attempt is made to charge a battery not intended to be recharged.
 - C. Discard leaky batteries immediately. Leaking batteries can cause skin burns or other personal injury. When discarding batteries, be sure to dispose of them in the proper manner, according to your state/provincial and local regulations.

End User License Agreement

EN

IMPORTANT: READ CAREFULLY BEFORE DOWNLOADING OR INSTALLING THIS SOFTWARE!

THIS END USER LICENSE AGREEMENT (THIS "EULA") IS A LEGAL AGREEMENT BETWEEN YOU AND THOMSON INC., OR ANY THOMSON GROUP ENTITY, AS DEFINED BELOW (COLLECTIVELY "THOMSON ENTITY"), FOR THE RCA OR THOMSON BRANDED PORTABLE DIGITAL AUDIO/VIDEO DEVICE APPLICATION/DRIVER SOFTWARE PROGRAM AND ASSOCIATED DOCUMENTATION, IF ANY (COLLECTIVELY, THE "PROGRAM"). THIS EULA CONTAINS IMPORTANT LEGAL LIMITATIONS, RESTRICTIONS AND DISCLAIMERS, AND ALSO SPECIFIES THE DURATION OF YOUR LICENSE.

BY INSTALLING THE PROGRAM OR CLICKING ON THE ACCEPTANCE BUTTON OF THE PROGRAM, COPYING OR OTHERWISE USING THE PROGRAM, YOU ACKNOWLEDGE AND AGREE THAT YOU HAVE READ THIS EULA, UNDERSTAND IT, AND AGREE TO BE BOUND BY ITS TERMS AND CONDITIONS. YOU MAY USE THE PROGRAM ONLY IN ACCORDANCE WITH THIS EULA, AND ANY SUCH USE IS HEREBY UNDERSTOOD TO BE CONDITIONAL UPON YOUR SPECIFIC AGREEMENT TO THE UNMODIFIED TERMS SET FORTH HEREIN. IF YOU DO NOT AGREE WITH ALL OF THE TERMS OF THIS EULA, CLICK ON THE REJECTION BUTTON AND/OR DO NOT INSTALL THE PROGRAM AND/OR DO NOT USE THE PROGRAM.

1. LICENSE

(a) Under this EULA, you are granted a license (i) to use the Program on a single workstation, and (ii) to make one (1) copy of the Program into any machine-readable form for backup of the Program, provided the copy contains all of the original Program's proprietary notices.

(b) You may transfer the Program and license to another party only as a part of the Thomson/RCA branded Portable Digital

Audio/Video Device ("AV Device"), and only if the other party agrees to accept the terms and conditions of this EULA. If you transfer the Program, you must at the same time either transfer all copies to the same party or destroy any copies not transferred.

(c) The terms of this EULA will govern any software upgrades or updates provided by THOMSON Entity that replace and/or supplement the original Program, unless such upgrade or update is accompanied by separate license terms and conditions in which case the terms of that separate license will govern. You acknowledge and agree that THOMSON Entity may automatically download upgrades or updates to the Program software to your computer in order to update, enhance, and/or further develop the Program.

2. LICENSE RESTRICTIONS

(a) Except for the licenses expressly granted to you in this EULA, no other licenses or rights are granted or implied.

(b) You may not (i) make the Program available over a network where it could be used by multiple computers at the same time; (ii) modify, translate, reverse engineer, decompile, disassemble (except to the extent that this restriction is expressly prohibited by law), or create derivative works based upon the Program; or (iii) copy the Program, except as expressly permitted herein. You agree that you shall only use the Program in a manner that complies with all applicable laws in the jurisdictions in which you use the Program, including, but not limited to, applicable restrictions concerning copyright and other intellectual property rights.

(c) The Program may contain pre-release code that does not perform at the level of a final code release. In such case, the Program may not operate properly. Updated versions of the Program may be downloaded from www.rca.com (if purchased in the United States) and www.thomson-lyra.com (if purchased in Europe).

End User License Agreement

(d) THOMSON Entity is not obligated to provide support services for the Program.

(e) The Program is provided with "RESTRICTED RIGHTS". Use, duplication, or disclosure by the U.S. Government is subject to restrictions as set forth in subparagraph (c)(1)(ii) of DFARS 252.227-7013, or FAR 52.227-19, or in FAR 52.227-14 Alt. III, as applicable.

3. TERM AND TERMINATION

(a) Your license is effective on the date you accept this EULA and remains in effect until this EULA is terminated by either party.

(b) You may terminate this EULA and the associated license, without any notice or delay, by destroying or permanently erasing the Program and all copies thereof.

(c) If you fail to comply with any of the terms of this EULA, in whole or part, your license will automatically terminate without notice from THOMSON Entity.

(d) Upon termination of this EULA and your associated license, you shall cease all use of the Program and destroy or permanently erase the Program and all full or partial copies thereof.

4. WARRANTY DISCLAIMER

THE PROGRAM IS PROVIDED "AS IS" WITHOUT WARRANTY OF ANY KIND, EITHER EXPRESSED OR IMPLIED, INCLUDING, BUT NOT LIMITED TO THE IMPLIED WARRANTIES OF MERCHANTABILITY, FITNESS FOR A PARTICULAR PURPOSE, TITLE OR NON-INFRINGEMENT. THE ENTIRE RISK AS TO THE QUALITY AND PERFORMANCE OF THE PROGRAM IS WITH YOU. SHOULD THE PROGRAM PROVE DEFECTIVE, YOU (AND NOT THOMSON ENTITY, ITS SUPPLIERS, OR ITS DEALERS) ASSUME THE ENTIRE COST FOR ALL NECESSARY REPAIR OR CORRECTION.

This exclusion of warranty may not be allowed under some applicable laws. As a result, the above exclusion may not apply to you, and you may have other rights depending on the law that applies to you.

5. OWNERSHIP RIGHTS

All title and intellectual property rights in and to the Program and any copies thereof are owned by THOMSON Entity or its suppliers. All title and intellectual property rights in and to the content which may be accessed through use of the Program is the property of the respective content owner and may be protected by applicable copyright or other intellectual property laws and treaties. This license grants you no rights to use such content.

6. LIMITATION OF LIABILITY

(a) TO THE MAXIMUM EXTENT PERMITTED BY APPLICABLE LAW, IN NO EVENT SHALL THOMSON ENTITY, OR ITS DEALERS BE LIABLE FOR ANY SPECIAL, INCIDENTAL, INDIRECT, OR CONSEQUENTIAL DAMAGES WHATSOEVER (INCLUDING, WITHOUT LIMITATION, DAMAGES FOR LOSS OF PROFITS, BUSINESS INTERRUPTION, CORRUPTION OF FILES, LOSS OF BUSINESS INFORMATION, OR ANY OTHER PECUNIARY LOSS) REGARDLESS OF CAUSE OR FORM OF ACTION, INCLUDING CONTRACT, TORT, OR NEGLIGENCE, ARISING OUT OF YOUR USE OF OR INABILITY TO USE THE PROGRAM, EVEN IF THOMSON ENTITY HAS BEEN ADVISED OF THE POSSIBILITY OF SUCH DAMAGES. BECAUSE SOME STATES AND JURISDICTIONS DO NOT ALLOW THE EXCLUSION OR LIMITATION OF LIABILITY OF CONSEQUENTIAL OR INCIDENTAL DAMAGES, THE ABOVE LIMITATION MAY NOT APPLY TO YOU.

(b) YOU ASSUME RESPONSIBILITY FOR THE SELECTION OF THE APPROPRIATE PROGRAM TO ACHIEVE YOUR INTENDED RESULTS, AND FOR THE INSTALLATION, USE, AND RESULTS OBTAINED.

End User License Agreement

EN

7. WINDOWS MEDIA

The software embedded within your A/V Device (the "Device Firmware") contains software licensed from Microsoft that enables you to play Windows Media Audio (WMA) files ("WMA Software"). The WMA Software is licensed to you for use with your A/V Device under the following conditions. By installing and using this version of the Device Firmware, you are agreeing to these conditions. IF YOU DO NOT AGREE TO THE END USER CONDITIONS OF THIS SECTION 7, DO NOT INSTALL OR USE THIS VERSION OF THE DEVICE FIRMWARE.

The WMA Software is protected by copyright and other intellectual property laws. This protection also extends to documentation for the WMA Software, whether in written or electronic form.

GRANT OF LICENSE. The WMA Software is only licensed to you as follows:

You may use this version of the Device Firmware containing the WMA Software only as such use relates to your A/V Device.

You may not reverse engineer, decompile, or disassemble the WMA Software, except and only to the extent that such activity is expressly permitted by applicable law.

You may transfer your right to use the Device Firmware only as part of a sale or transfer of your A/V Device, on the condition that the recipient agrees to the conditions set forth herein. If the version of the Device Firmware that you are transferring is an upgrade, you must also transfer all prior versions of the Device Firmware that you have which include the WMA Software.

MICROSOFT IS NOT PROVIDING ANY WARRANTY OF ANY KIND TO YOU FOR THE WMA SOFTWARE, AND MICROSOFT MAKES NO

REPRESENTATION CONCERNING THE OPERABILITY OF THE WMA SOFTWARE.

The WMA Software is of U.S. origin. Any export of this version of the Device Firmware must comply with all applicable international and national laws, including the U.S. Export Administration Regulations, that apply to the WMA Software incorporated in the Device Firmware.

Content providers are using the digital rights management technology for Windows Media contained in your A/V Device ("WM-DRM") to protect the integrity of their content ("Secure Content") so that their intellectual property, including copyrights, in such content is not misappropriated. Your A/V Device uses WM-DRM software to play Secure Content ("WM-DRM Software"). If the security of the WM-DRM Software in your A/V Device has been compromised, owners of Secure Content ("Secure Content Owners") may request that Microsoft revoke the WM-DRM Software's right to acquire new licenses to copy, display, and/or play Secure Content. Revocation does not alter the WM-DRM Software's ability to play unprotected content. A list of revoked WM-DRM Software is sent to your A/V Device whenever you download a license for Secure Content from the Internet or from a computer. Microsoft may, in conjunction with such license, also download revocation lists onto your A/V Device on behalf of Secure Content Owners.

End User License Agreement

8. THIRD PARTY SOFTWARE

ANY THIRD PARTY SOFTWARE THAT MAY BE PROVIDED WITH THE PROGRAM IS INCLUDED FOR USE AT YOUR OPTION. IF YOU CHOOSE TO USE SUCH THIRD PARTY SOFTWARE, THEN SUCH USE SHALL BE GOVERNED BY SUCH THIRD PARTY'S LICENSE AGREEMENT, AN ELECTRONIC COPY OF WHICH WILL BE INSTALLED IN THE APPROPRIATE FOLDER ON YOUR COMPUTER UPON INSTALLATION OF THE SOFTWARE. THOMSON ENTITY IS NOT RESPONSIBLE FOR ANY THIRD PARTY'S SOFTWARE AND SHALL HAVE NO LIABILITY FOR YOUR USE OF THIRD PARTY SOFTWARE.

9. GOVERNING LAW

If you acquired this AV Device in the United States, this EULA shall be governed and construed in accordance with the laws of the State of Indiana, U.S.A. without regard to its conflict of laws principles. If you acquired this AV Device within the European Union, this EULA shall be governed and construed in accordance with the laws of France, without regard to its conflict of laws principles. If you acquired this AV Device outside the United States or the European Union, then local law may apply.

10. GENERAL TERMS

This EULA can only be modified by a written agreement signed by you and THOMSON Entity, and changes from the terms and conditions of this EULA made in any other manner will be of no effect. If any portion of this EULA shall be held invalid, illegal, or unenforceable, the validity, legality, and enforceability of the remainder of the Agreement shall not in any way be affected or impaired thereby. This EULA is the complete and exclusive statement of the agreement between you and THOMSON Entity, which supersedes all proposals or prior agreements, oral or written, and all other communications between you and THOMSON

Entity, relating to the subject matter of this hereof. "THOMSON Group Entity" when used in this EULA shall mean any person, corporation, or other organization, domestic or foreign, including but not limited to subsidiaries, that is directly or indirectly controlled by Thomson, French company. For purposes of this definition only, the term "control" means the possession of the power to direct or cause the direction of the management and policies of an entity, whether by ownership of voting stock or partnership interest, by contract, or otherwise, including direct or indirect ownership of more than fifty percent (50%) of the voting interest in the entity in question.

Table of Contents

EN

FCC Information		Suppressing Stereo Signal	12
End User License Agreement		Stop Listening to the Radio	
Before You Begin	2	Radio Recording	13
Connecting to Computer	5	Recording Duration	
Charging the Battery		Listening to Recording	
Transferring Files to the Player		Deleting Recording	
General Controls	6	Voice Recording	14
File Menu	7	Recording Duration	
How Files are Organized		Listening to Recording	
File Menu Navigation		Deleting Recording	
Player Menu	8	Line-in Recording	15
Player Menu Navigation		Recording Duration	
Music & Audible Playback	9	Listening to Recording	
Turning On and Off Player		Deleting Recording	
Playing / Pausing		Picture Playback	16
Skipping Files		Viewing Picture	
Scanning Files		Activating Slideshow	
Random Playback		Viewing Slideshow	
Repeat Playback	10	Video Playback	17
DSP		Converting Video	
My Selections		Viewing Video	18
Radio	11	Skipping Video	
Listening to Radio		Scanning Video	
Manual and Preset Modes		Setting the Player	19
Manual Tuning		Settings	
Saving Preset Stations	12	System Info	
Selecting Preset Stations		More Information	20
Clearing Presets		Warranty	22

Before You Begin

EN

Dear RCA Customer,

Thank you for purchasing the RCA Digital Audio Player. This product will play open mp3 and Windows Media™ audio (WMA) content as well as content purchased from most online music download services.

After purchasing and downloading music to your PC, you are now ready to move content to your player. To transfer the music, you should use Windows Media Player or the application recommended by the online music download service.

(Note: Services and applications must be Windows Media audio-compliant and support Digital Rights Management.)

Unpacking your unit

When you unpack your new player, be sure you have removed all the accessories and documentation. The items below should have been packed in the box with your player.

- Digital Audio Player
- Music Management CD
- Earphones
- USB cable
- Line-in cable
- Neck strap

What's so special about this mp3 player?

This player is meant to play mp3 and Windows Media™ audio files and view picture and video clip files.

To do so, you need the use of a Windows computer with a USB port, USB cable and a music management software.

Computer system requirements

- Pentium III 500MHz or higher recommended
Macintosh iMac G3 or higher
- Windows ® 2000 (SP3 or higher), or XP
Mac OS X Version 10.2 or higher
- Internet Explorer 4.0 or higher
- Internet access
- 200MB free hard disk space for the software
- 64MB RAM (128 MB recommended)
- CD-ROM drive capable of digital audio extraction
- USB port (2.0 recommended)
- Sound card

Before You Begin

EN



Warning:

Use of this product is for your personal use only. Unauthorized recording or duplication of copyrighted material may infringe upon the rights of third parties and may be contrary to copyright laws.

Precautions for the Unit

- Do not use the unit immediately after transportation from a cold place to a warm place; condensation problem may result.
- Avoid shock to the unit.
- Do not store the unit near fire, places with high temperature or in direct sunlight.
- Do not operate or store unit in places with frequent static electricity or electrical noise (e.g. speaker, TV set).
- Clean the unit with a soft cloth or a damp chamois leather. Never use solvents.
- The unit must only be opened by qualified personnel.

Caution

- Keep product out of direct sunlight. Exposure to direct sunlight or extreme heat (such as inside a parked car) may cause damage or malfunction.
- Do not expose to rain or moisture.

Caution while Driving

Use of headphones while operating an automobile or moving vehicle is not recommended and is unlawful in some states and areas. Be careful and attentive on the road. Stop operation of the unit if you find it disruptive or distracting while driving.

Headset Safety



Have a Blast- Just Not in Your Eardrums

Make sure you turn down the volume on the unit before you put on

headphones. Increase the volume to the desired level only after headphones are in place.

- Do not play your headset at a high volume. Hearing experts warn against extended high-volume play.
- If you experience a ringing in your ears, reduce volume or discontinue use.
- You should use extreme caution or temporarily discontinue use in potentially hazardous situations. Even if your headset is an open-air type designed to let you hear outside sounds, don't turn up the volume so high that you are unable to hear what is around you.

Before You Begin

EN

Important Battery Information

- Charge the unit for at least 2 hours before first use.
- Charge the unit for at least 2 hours after putting away the unit for a long time.
- The battery used in this device may present a risk of fire or chemical burn if mistreated. Do not separately recharge, disassemble, heat above 100°C (212°F), or incinerate.
- Battery replacement should only be made by a trained technician. Refer to Limited Warranty for details.
- Do not attempt to open the unit. No user serviceable parts inside.
- To reduce risk of injury, use only rechargeable batteries recommended by the manufacturer for this product. Other types of batteries may burst causing damage and personal injury.
- Keep the unit away from children. Do not disassemble or incinerate.
- Use USB port of PC or the specified charger (not included). Use of another charger may present a risk of fire or explosion.

incinerate, or expose to high temperatures. Examples of high temperatures that may damage your product include leaving it in a locked car in summer, or putting it on top of heat generating electronic devices (such as power amplifiers and computer monitors).

- Dispose of used battery promptly. Keep away from children. Do not disassemble and do not dispose of in fire.



Caution

- The battery used in this device may present a risk of fire, explosion, or chemical burn if mistreated. Do not separately recharge, disassemble,

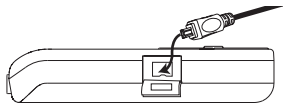
Connecting to Computer

EN

Charging the Battery

The player's battery can only be charged through the USB port of a computer.

1. Open the cover of the USB jack and connect the smaller end of the USB extension cable to the USB jack on the player.



2. Insert the larger end of the USB extension cable into the USB port on the computer tightly. Once connected, the display shows as below:



3. Press and hold [power button] to enter battery charging mode. The display shows as below with the battery icon animating.



- Charge the unit for at least 2 hours before first use.
- You can still transfer files to the player in the battery charging mode.
- When the battery is full, the display shows "Battery full".



Note: The player will automatically go to battery charging mode if the battery level is low.

Attention: Do not separately recharge, disassemble, incinerate, or expose to high temperatures over 45°C (113°F). Examples of high temperatures that may damage your product include leaving it in a locked car in the summer, the dashboard of car or putting it on top of other heat generating electronics devices (such as power amplifiers and computer monitors).

Transferring Files to the Player

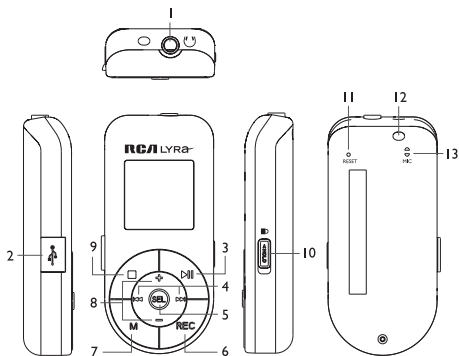
You should refer to the software manual for details in software installation, connecting your player with the computer and transferring files to the player.



Attention: Do not disconnect the USB connection during music download. Doing so may corrupt system files or the files being downloaded.

General Controls

EN



1. : headphone jack, input jack for line-in cable.
2. : USB jack.
3. : 1) press once to switch on the player; 2) starts and pauses playback.
4. Slide **SEL** to the / to : 1) skip and search backward or forward a file; 2) go back or forward in a menu level in menu navigation; 3) select radio frequency or preset stations.
5. **SEL** : 1) in music playback, press to store music files in My Selections; 2) for sectioned audible files, press repeatedly during playback to select skipping by section or by file; 3) in radio mode, press to select between preset and manual tuning modes.
6. **REC** : press to start and pause recording;
7. **M** : press to access the player's menu.
8. Slide **SEL** to the or to : 1) increase or decreases volume during playback; 2) move upward or downward in menu navigation.
9. : 1) press once to stop playback and recording; 2) press and hold to switch off the player.
10. : lock switch - slide to the locked icon to prevent accidental key activation. The lock icon shows on the display when keys are locked.
11. **RESET** : reset button.
12. Neck strap hole
13. **MIC** : microphone for voice recording.

File Menu

EN

How Files are Organized?

The files transferred to the player will be sorted automatically so that you can easily find and play them. They are sorted as below in the library mode:

- Music* (contains music files)
- Audiobooks (contains audible files)
- Radio Recs (contains radio recording)
- Voice Recs (contains voice recording)
- Line-in Recs (contains line-in recording)
- My Selections (contains a playlist of your preferred music files)
- Pictures (contains photo files)
- Video (contains video files)

File menu



*Music files are further sorted as below:

- Artists
- Albums
- Titles
- Genres
- Years

The file menu is displayed when **M** is pressed during playback.

File Menu Navigation

- Slide to the **▶▶** to go to the next menu level.
- Slide to the **+ or -** to move along menu items at the same level.
- Slide to the **◀◀** to go to the previous menu level.
- If the selected item is a music, audible, recording, photo or video files, slide to the **▶▶** or **▶▶▶** to start playback.

Player Menu

Player Menu

The player menu lets you access more features of the player.

Player menu



Depending on the mode you are in (e.g. music playback, radio recording etc.), the items available in the player menu may vary.

Follow the steps below to access the player menu:

- If you are at the file menu navigation screen, press **M** once to access the player menu.

File menu



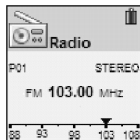
- If you are at the playback screen, press **M** twice to access the player menu.

Playback screen



- If you are in Radio, Voice Recording, Line-in Recording, Picture or Video mode, press **M** once to access the player menu.

Radio mode



Player Menu Navigation

- Slide to the **»** to go to the next menu level
- Slide to the **+** or **-** to move along menu items at the same level.
- Slide to the **«** to go to the previous menu level.
- Items in the player menu include:
 - Go to (to access radio, voice recording and line-in recording modes)
 - Shuffle (refer to p.9)
 - Repeat (refer to p.10)
 - DSP (refer to p.10)
 - Slideshow (refer to p.16)
 - Clear MySel (refer to p.10)
 - Settings (refer to p.19)
 - System Info (refer to p.19)

Music & Audible Playback

EN

Turning On and Off Player

- Press **▶||** to turn on the unit.
- To turn off the player completely, press and hold **■**.

Playing / Pausing

- Press **▶||** to begin playback.
- Press **▶||** once to pause playback, press again to resume playback.

During playback, total time, elapsed playback time and file information show on the display. If music files contain lyrics, they will be displayed with the lyrics function turned on (refer to page 19).

Playback screen



Skipping Files

- To skip to the next file, slide to the **▶▶**.
- To skip to the previous file, slide to the **◀◀** within the beginning 4 seconds of the current file. Otherwise, slide to the **◀◀** twice.

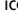
Note: for sectioned audible files, press **SEL** and then perform the steps above to go to the previous or next audible section. Press **SEL** repeatedly to select skipping by file or by section.

If skipping by file is selected, sliding to **◀◀** at any time during playback will only go to the previous file.

Scanning Files

- To fast reverse quickly, slide and hold to the **◀◀** during playback.
- To fast forward quickly, slide and hold to the **▶▶** during playback.

Random Playback

1. Press **M** once or twice to access to player menu (refer to page 8 for more details).
2. Slide to the **+** or **-** to highlight "Shuffle".
3. Press **SEL** repeatedly to select the shuffle mode on or off. The shuffle icon  lights on the display when activated.

Note: random playback is not available for audible files.



Tips: Shuffle on + Repeat one = a file is selected randomly and played



repeatedly.

Shuffle on + Repeat All = Files are played in random order repeatedly.

Music & Audible Playback

EN

Repeat Playback

1. Press **M** once or twice to access to player menu (refer to page 8 for more details).
2. Slide to the + or – to highlight “Repeat”.
3. Press **SEL** repeatedly to select a repeat mode (Repeat One , Repeat All  and Repeat Off). The corresponding icon lights on the display.

Note: repeat playback is not available for audible files.

DSP

DSP feature consists a number of sound effects.

1. Press **M** once or twice to access to player menu (refer to page 8 for more details)
2. Slide to the + or – to highlight “DSP”.
3. Press **SEL** repeatedly to select an effect mode (Flat, Bass, Pop, Rock and Jazz).

Note: DSP is not available for audible files.

My Selections

My Selections is a playlist of your preferred music files (audible, radio, voice and line-in recorded files are not selectable).

1. Select your preferred files in one of the following ways:

- Press **SEL** once while you are listening to a preferred music file with “Added to MySel” shows on the display briefly.
 - Press **SEL** once while you are browsing music files in the navigation menu, “Added to MySel” shows on the display briefly (see “File Menu - How Files are Organized” and “File Menu Navigation” for details).
 - 2. Select “My Selections” folder from the file menu (see “File Menu - How Files are Organized” and “File Menu Navigation” for details).
 - 3. Press **▶||** to begin playback.
-
- To clear My Selections, press **M** once or twice to access to player menu (refer to page 8 for more details). Slide to the + or – to highlight “Clear MySel” and then press **SEL** to confirm clearing.

Radio

EN

Listening to Radio

1. Press **M** once or twice to access to player menu (refer to page 8 for more details).
2. While "Go to" is highlighted in the menu, slide to the **»** to enter into the submenu.

Go to	>
Shuffle	Off
Repeat	Off
DSP	Flat

3. While "Radio" is highlighted, slide to the **»** to switch on the radio.

Radio
Voice Recording
Line-in Recording

Manual and Preset Modes

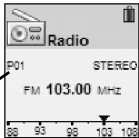
Press **SEL** repeatedly to select between the two modes while listening to the radio. See picture below for details.

Manual mode – tuning to stations manually,

Preset mode – selecting stations saved in preset memory.

Radio preset mode

Preset mode



Manual Tuning

- Slide to the **«** or **»** once to tune down or up frequency band. or
- Slide and hold to the **«** or **»** until you see "Searching..." to start automatic search for the next available station. or
- Slide and hold to the **«** or **»** to tune down or up the frequency band at a faster rate until you release the button.

Saving Preset Stations

1. Tune to a station to be saved as a preset station (refer to manual tuning).
2. Press **M**.
3. Slide to the + or - to highlight "Save to Preset" and slide to the ► .
4. Slide to the ◀◀ or ▶▶ to select a preset number.
5. Press **SEL** to save the selected station in the selected preset number or press **M** to exit without saving.

Selecting Preset Stations

1. Make sure you are in preset mode. Refer to "Manual and Preset Modes" on the previous page.
2. Slide to the ◀◀ or ▶▶ to select a preset number.

Clearing Presets

1. In preset mode, select the preset station to be cleared, press **M** to view the radio sub-menu.
2. Slide to the + or - to highlight "Clear Preset".
3. Press **SEL** to confirm clearing.

Suppressing Stereo Signal

If FM stereo reception is weak, select mono sound to reduce the noise.

1. While listening to the radio, press **M** to view the radio sub-menu.
2. Slide to the + or - to highlight "Mode".
3. Press **SEL** repeatedly to select between stereo or mono sound.

Stop Listening to the Radio

- Press and hold ■ to switch off the player. OR
- Press **M** while listening to the radio. Select "Go to" by pressing **SEL** and then "Library" by pressing **SEL** again. The player will return to the file menu.

Radio Recording

EN

Radio station can be recorded as mp3 files.

1. Tune to the station to be recorded.
2. Press **REC** to start recording. Press **REC** to pause recording and again to resume.
3. Press **■** to stop recording. Recorded file is stored in the "Radio Recs" folder.

Radio recording mode



Recording Duration

1. While listening to the radio, press **M** to view the radio sub-menu.
2. Slide to the **+** or **-** to highlight "RecDur" (recording duration).
3. Press **SEL** repeatedly to select among max, 1 hour, 30 min and 5 min.

Listening to Recording

1. In the file menu, slide to the **+** or **-** to highlight "Radio Recs".
2. Slide to the **▶▶** to view recorded files and then slide to the **+** or **-** to highlight a desired recording.
3. Press **▶▶** or slide to the **▶▶** to play the highlighted file.

Deleting Recording

1. In the file menu, slide to the **+** or **-** to highlight "Radio Recs".
2. Slide to the **▶▶** to view recorded files and then slide to the **+** or **-** to highlight an unwanted recorded file.
3. Press **M** and then slide to the **+** or **-** to highlight "Delete File".
4. Press **SEL** to confirm deletion.



Tips: Refer to page 8 for details on the file menu.

Voice Recording

EN

Voice can be recorded through the microphone as a ".wav" file.

1. Press **M** once or twice to access to player menu (refer to page 8 for more details).
2. While "Go to" is highlighted in the menu, slide to the **»** to enter into the submenu.
3. Slide to the **+** or **-** to highlight "Voice Recording".



4. Slide to the **»**, "Ready" shows on the display.
5. Press **REC** to start recording. Press **REC** to pause recording. Press again to resume.
6. Press **■** to stop recording. Recorded file is stored in the "Voice Recs" folder.

Voice recording mode



Recording Duration

1. Press **M** in voice recording mode to view its sub-menu.
2. Slide to the **+** or **-** to highlight "RecDur" (recording duration).
3. Press **SEL** repeatedly to select among max, 1 hour, 30 min and 5 min.

Listening to Recording

1. In the file menu, slide to the **+** or **-** to highlight "Voice Recs".
2. Slide to the **»** to view recorded files and slide to the **+** or **-** to highlight a desired recording.
3. Press **»** or slide to the **»** to play the highlighted file.

Deleting Recording

1. In the file menu, slide to the **+** or **-** to highlight "Voice Recs".
2. Slide to the **»** to view recorded files and slide to the **+** or **-** to highlight an unwanted recorded file.
3. Press **M** and then slide to the **+** or **-** to highlight "Delete File".
4. Press **SEL** to confirm deletion.



Tips: Refer to page 8 for details on the file menu.

Line-in Recording

EN

Recording an audio source as mp3 files can be made through a line-in cable connected to the headphone jack.

1. Press **M** once or twice to access to player menu (refer to page 8 for more details).
2. While "Go to" is highlighted in the menu, slide to the **»** to enter into the submenu.
3. Slide to the **+** or **-** to highlight "Line-in Recording".



Radio
Voice Recording
Line-in Recording

4. Slide to the **»**, "Ready" shows on the display.
5. Press **REC** to start recording. Press **REC** to pause recording. Press again to resume.
6. Press **■** to stop recording. Recorded file is stored in the "Line-in Recs" folder.

Line-in recording mode



Recording Duration

1. Press **M** in line-in recording mode to view its sub-menu.
2. Slide to the **+** or **-** to highlight "RecDur" (recording duration).
3. Press **SEL** repeatedly to select among max, 1 hour, 30 min and 5 min.

Listening to Recording

1. In the file menu, slide to the **+** or **-** to highlight "Line-in Recs".
2. Slide to the **»** to view recorded files and then slide to the **+** or **-** to highlight a desired recording.
3. Press **»** or slide to the **»** to play the highlighted file.

Deleting Recording

1. In the file menu, slide to the **+** or **-** to highlight "Line-in Recs".
2. Slide to the **»** to view recorded files and then slide to the **+** or **-** to highlight an unwanted recorded file.
3. Press **M** and then slide to the **+** or **-** to highlight "Delete File".
4. Press **SEL** to confirm deletion.



Tips: Refer to page 8 for details on the file menu.

Adjust the volume level of the source audio device in order to achieve the optimum recording quality. The source output varies from model to model. You might want to experiment with a few recordings to determine the proper volume output of the source to get optimum recording quality from the player. Recommend starting the source at around the room volume level.

Picture Playback

EN

Viewing Picture

1. In the file menu, slide to the + or – to highlight "Pictures".
2. Slide to the ► to view picture files and then slide to the + or – to highlight a desired picture.
3. Press ► or slide to the ► to play the highlighted picture.
4. Slide to the ◀ or ► to view previous or next picture.
5. Press ■ to stop viewing pictures and return to the file menu.

Activating Slideshow

1. Press **M** once or twice to access to player menu (refer to page 8 for more details).
 2. Slide to the + or – to highlight "Slideshow".
 3. Press **SEL** repeatedly to select among off, 3, 5, 10 and 15 seconds. This is the viewing duration of each picture in the slideshow.
- If you want to turn off slideshow, select "Off" in the above step.



Tips: Refer to the software user manual for transferring picture or video clip files to the player.

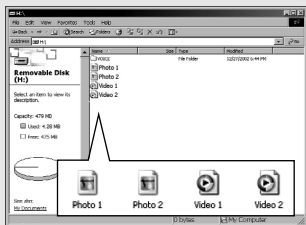
Viewing Slideshow

1. In the file menu, slide to the + or – to highlight "Pictures".
2. Press ►► to start slideshow. Pictures change according to the duration you have selected in "Activating Slideshow".
- Press ►► to pause slideshow and again to resume it.
- Slide to the ◀ or ► to view previous or next picture.
3. Press ■ to stop slideshow and return to the file menu.



Attention: Picture and converted video files should be transferred via Windows

Explorer (drag-and-drop) in the shown root directory. Picture and video files will not play from any created subfolders.



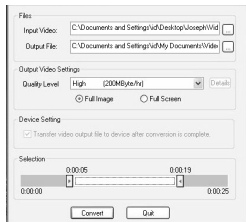
Video Playback


EN

Converting Video

Your video has to be converted to optimum size before transferring to this player for playback. To do so, you need to install the RCA Video Converter in your computer (Windows 2000 and XP only).

1. Load the music management CD included with this player in your computer. Installation will start automatically after the installation of device installer and Yahoo! Music Engine. Follow the instructions on screen to install the converter.
2. Launch the video converter after installation succeeded.



3. Under "Files", select the "Input Video" file and "Output File" locations from the file directory of your computer by clicking the corresponding button  on the right.
 - As a shortcut, you may also drag and drop the source video file to the "Input Video" field.

- You can connect the player to the computer and select it as the output location.
4. Under "Settings", select "Quality Level" as "High" (default) for the best viewing quality.

You may also want to select between "Full Image" and "Full Screen".
 - Full image - the converter will keep the whole original image to be seen. However, the player's screen may not be occupied fully.
 - Full screen - the converter will resize the image to fit the player's screen. Some parts of the original image may be cut.



Original



Full image



Full screen

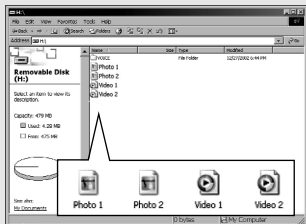
5. Under "Selection", drag the two arrows to assign the start and end points of the video to be converted. The corresponding time stamps show above the arrows for reference. If you need to convert the whole video, drag the arrows to the beginning and the end times of the video.
6. Click "Convert" to start video conversion. The converted file will be saved at the output location you have assigned.

Video Playback

EN



Attention: Picture and converted video files should be transferred via Windows Explorer (drag-and-drop) in the shown root directory. Picture and video files will not play from any created subfolders.



Before transferring video files to your portable device, you must use the video transcoder software to convert the video to a format suitable for playing in your portable device. This video transcoder software relies on the video codecs already installed in your computer. Make sure the video file you wish to convert plays on your computer before using the video transcoder software. Note that some video files that play on your computer may rely on specialized video playback applications that are not compatible with the video transcoder software.

Viewing Video

1. In the file menu, slide to the + or – to highlight "Video".
2. Slide to the ► to view video files and then slide to the + or – to highlight a desired video.
3. Press ►|| or slide to the ► to play the highlighted video.
 - Press ►|| to pause playback and again to resume it.
4. Press ■ to stop viewing video and return to the file menu.

Skipping Video

- To skip to the next video, slide to the ►.
- To skip to the previous video, slide to the ◀.

Scanning Video

- To fast reverse quickly, slide and hold to the ◀◀ during playback.
- To fast forward quickly, slide and hold to the ►► during playback.



Tips: Refer to the software user manual for transferring picture or video clip files to the player.

Setting the Player

EN

Settings

1. Press **M** once or twice to access the player menu (refer to page 8 for more details)
2. Slide to the **+** or **-** to highlight "Settings".
3. Slide to the **▶▶** to enter the setting menu. Slide to the **+** or **-** to highlight a desired option. The following items are available.
 - **Brightness** (adjusts the display brightness, 8 levels available),
 - **Screensaver** (adjusts the duration before screensaver activation, 5 options available),
 - **Power Save** (adjusts the duration before automatic shut down, 5 options available),
 - **FreqStep** (Frequency Step) (selects between US and Europe frequency mode),
 - **Lyrics** (hides or shows lyrics on the playback screen if they are available. Refer to "About Lyrics" on this page),
 - **Language** (selects the display language),
 - **Flip Display** (flips the display by 180° rotation),
 - **Restore Defaults** (restores all settings to default values by pressing **SEL** or sliding to the **▶▶**).

4. Unless otherwise indicated, select available options within each item by pressing **SEL** or sliding to the **▶▶** repeatedly. To exit the setting menu, press **M**.

System Info

1. Press **M** once or twice to access to player menu (refer to page 8 for more details)
2. Slide to the **+** or **-** to highlight "System Info".
3. Slide to the **▶▶** to check memory usage and firmware version.



About Lyrics. The unit supports LRC lyric format (seperated file with the same name as the original music file but with .lrc as the file extension) and Lyrics3 V2.0 lyric format (lyrics already embedded in the music files). For LRC format, you should copy both music and LRC lyric files to the unit in the same folder. For Lyrics3 format, you only need to copy the music files to the unit.

More Information

EN

Troubleshooting Tips

The player does not turn on when the PLAY button is pressed?

- Battery may be empty.
- Press the reset button to reset the player.

Skipping tracks or bad sound quality?

- Repeat, random or playlist function may be activated.
- There may be strong magnetic fields (e.g. too close to TV) near the unit.
- Low Battery level.

Cannot perform playback?

- LOCK function may be activated.
- There may be no mp3/WMA tracks in the internal memory.

USB display does not appear when connected to computer?

- Check connection between your unit and the computer. (Refer to the software instruction manual)
- You may have to re-associate the drive letter that was assigned to the device. Please check your help on Windows for details on assigning a different drive letter.

Cannot show lyrics?

- Refer to page 19 for setting the unit to show lyrics and the lyric format supported.

Cannot playback tracks on the player.

- Make sure audio tracks are encoded in the mp3 or Windows Media formats at supported bitrates. Bitrates supported by the player:
mp3 – 32 to 320 kbps
wma – 48 to 192 kbps
- WMA or audiobooks files may be DRM protected and you don't have the proper rights (license) to play the files.
- Check the website and/or application help system of the music download service provider from where the content was purchased for license acquisition details. For more information on how license acquisition works, go to www.microsoft.com/windows/windowmedia/forpros/drm/default.aspx.
- Play the original or downloaded song on your computer to ensure that there was nothing wrong with the encoding of the mp3 or WMA.

Cannot view picture or video clip files.

- Video clip files must be converted to optimum format by video converter.
- Picture and converted video clip files must be copied to the root directory on the player for viewing.

More Information

EN

The player does not work after reformat.

- In case you need to reformat the player, it must be in FAT32 format. The player does not work in NTFS format.

My computer does not boot-up if the player is connected prior to turning on the PC.

- In order to improve the performance of your portable music player and allow a faster download experience, the storage in your device has been formatted using a larger sector size. The BIOS in some older computers does not support this larger sector size, which causes it not to recognize the device when the PC is booting-up. To correct this, simply disable the "boot from USB" option in your computer BIOS or wait until your computer has completed its boot-up sequence before connecting your portable music player.

Check for Updates

Visit <http://www.rca.com/digitalaudidownloads> for the latest news and firmware upgrades for our Digital Audio Player. You must update your system after new downloads have been made in order for the new applications to be executed.



Note:

For better result, we recommend a constant

encoded bit rate from 32 to 320kbps for mp3 and 48kbps to 192kbps for Windows Media Audio.

Nevertheless, your unit can play tracks encoded in variable bit rate (VBR).

This unit may temporarily cease to function if subjected to electrostatic disturbance. To resume to normal functioning, you may use a pin to activate the reset button.

Frequently Asked Questions

You can get FAQ information at www.rca.com/digitalaudiofaq.

Specifications

Weight: 30g

Dimensions: 70.6 mm (Length) x 32mm (Width) x 14.4mm (Thickness).

Canadian Limited Warranty

EN

Thomson multimedia Ltd. warrants to the purchaser or gift recipient that if any manufacturing defect becomes apparent in this product within 1 year from the original date of purchase, it will be replaced free of charge, including return transportation.

This warranty does not include damage to the product resulting from accidents, misuse or leaking batteries.

Should your product not perform properly during the warranty period, either:

1. Return it to the selling dealer with proof of purchase for replacement,

OR

2. Remove the batteries (where applicable), and pack product complete with accessories in the original carton (or equivalent).

— Mail prepaid (with proof of purchase) and insured to:

Thomson multimedia Ltd.
6200 Edwards Blvd.,
Mississauga, Ontario L5T 2V7
Canada

The provisions of this written warranty are in addition to and not a modification of or subtraction from the statutory warranties and other rights and remedies contained in any applicable legislation, and to the extent that any such provisions purport to disclaim, exclude or limit any such statutory warranties and other rights and remedies, such provisions shall be deemed to be amended to the extent necessary to comply therewith.

If you are unable to find a qualified servicer for out of warranty service, you may write to:

Thomson Inc.
P.O. Box 0944
Indianapolis, Indiana, U.S.A., 46206-0944

Attach your sales receipt to this booklet for future reference. This information is required if service is needed during the warranty period.

PURCHASE DATE

NAME OF STORE



Thomson Inc.
P.O. Box 1976
Indianapolis, IN 46206-1976
© 2006 Thomson Inc.
Trademark(s) ® Registered
Marca(s) ® Registrada(s)
Marque(s) ® Déposée(s)
www.rca.com
Printed In China / Impreso en China
Tocom (v3.0)

RCA

u s e r
m a n u a l

Software
Installation

File Transfer

It is important to read this instruction book prior to using your new product for the first time.

End User License Agreement

EN

IMPORTANT: READ CAREFULLY BEFORE DOWNLOADING OR INSTALLING THIS SOFTWARE!

THIS END USER LICENSE AGREEMENT (THIS "EULA") IS A LEGAL AGREEMENT BETWEEN YOU AND THOMSON INC., OR ANY THOMSON GROUP ENTITY, AS DEFINED BELOW (COLLECTIVELY "THOMSON ENTITY"), FOR THE RCA OR THOMSON BRANDED PORTABLE DIGITAL AUDIO/VIDEO DEVICE APPLICATION/DRIVER SOFTWARE PROGRAM AND ASSOCIATED DOCUMENTATION, IF ANY (COLLECTIVELY, THE "PROGRAM"). THIS EULA CONTAINS IMPORTANT LEGAL LIMITATIONS, RESTRICTIONS AND DISCLAIMERS, AND ALSO SPECIFIES THE DURATION OF YOUR LICENSE.

BY INSTALLING THE PROGRAM OR CLICKING ON THE ACCEPTANCE BUTTON OF THE PROGRAM, COPYING OR OTHERWISE USING THE PROGRAM, YOU ACKNOWLEDGE AND AGREE THAT YOU HAVE READ THIS EULA, UNDERSTAND IT, AND AGREE TO BE BOUND BY ITS TERMS AND CONDITIONS. YOU MAY USE THE PROGRAM ONLY IN ACCORDANCE WITH THIS EULA, AND ANY SUCH USE IS HEREBY UNDERSTOOD TO BE CONDITIONAL UPON YOUR SPECIFIC AGREEMENT TO THE UNMODIFIED TERMS SET FORTH HEREIN. IF YOU DO NOT AGREE WITH ALL OF THE TERMS OF THIS EULA, CLICK ON THE REJECTION BUTTON AND/OR DO NOT INSTALL THE PROGRAM AND/OR DO NOT USE THE PROGRAM.

1. LICENSE

- Under this EULA, you are granted a license (i) to use the Program on a single workstation, and (ii) to make one (1) copy of the Program into any machine-readable form for backup of the Program, provided the copy contains all of the original Program's proprietary notices.
- You may transfer the Program and license to another party only as a part of the Thomson/RCA branded Portable Digital Audio/Video Device ("AV Device"), and only if the other party agrees to accept the terms and conditions of this EULA. If you transfer the Program, you must at the same time either transfer all copies to the same party or destroy any copies not transferred.
- The terms of this EULA will govern any software upgrades or updates provided by THOMSON Entity that replace and/or supplement the original Program, unless such upgrade or update is accompanied by separate license terms and conditions in which case the terms of that separate license will govern. You acknowledge and agree that THOMSON Entity may automatically download upgrades or updates to the Program software to your computer in order to update, enhance, and/or further develop the Program.

2. LICENSE RESTRICTIONS

- Except for the licenses expressly granted to you in this EULA, no other licenses or rights are granted or implied.

- You may not (i) make the Program available over a network where it could be used by multiple computers at the same time; (ii) modify, translate, reverse engineer, decompile, disassemble (except to the extent that this restriction is expressly prohibited by law), or create derivative works based upon the Program; or (iii) copy the Program, except as expressly permitted herein. You agree that you shall only use the Program in a manner that complies with all applicable laws in the jurisdictions in which you use the Program, including, but not limited to, applicable restrictions concerning copyright and other intellectual property rights.
- The Program may contain pre-release code that does not perform at the level of a final code release. In such case, the Program may not operate properly. Updated versions of the Program may be downloaded from www.rca.com (if purchased in the United States) and www.thomson-lyra.com (if purchased in Europe).
- THOMSON Entity is not obligated to provide support services for the Program.
- The Program is provided with "RESTRICTED RIGHTS". Use, duplication, or disclosure by the U.S. Government is subject to restrictions as set forth in subparagraph (c)(1)(ii) of DFARS 252.227-7013, or FAR 52.227-19, or in FAR 52.227-14 Alt. III, as applicable.

3. TERM AND TERMINATION

- Your license is effective on the date you accept this EULA and remains in effect until this EULA is terminated by either party.
- You may terminate this EULA and the associated license, without any notice or delay, by destroying or permanently erasing the Program and all copies thereof.
- If you fail to comply with any of the terms of this EULA, in whole or part, your license will automatically terminate without notice from THOMSON Entity.
- Upon termination of this EULA and your associated license, you shall cease all use of the Program and destroy or permanently erase the Program and all full or partial copies thereof.

4. WARRANTY DISCLAIMER

THE PROGRAM IS PROVIDED "AS IS" WITHOUT WARRANTY OF ANY KIND, EITHER EXPRESSED OR IMPLIED, INCLUDING, BUT NOT LIMITED TO THE IMPLIED WARRANTIES OF MERCHANTABILITY, FITNESS FOR A PARTICULAR PURPOSE, TITLE OR NON-INFRINGEMENT. THE ENTIRE RISK AS TO THE QUALITY AND PERFORMANCE OF THE PROGRAM IS WITH YOU. SHOULD THE PROGRAM PROVE DEFECTIVE, YOU (AND NOT THOMSON ENTITY, ITS SUPPLIERS, OR ITS DEALERS) ASSUME THE ENTIRE COST FOR ALL NECESSARY REPAIR OR CORRECTION.

End User License Agreement

EN

This exclusion of warranty may not be allowed under some applicable laws. As a result, the above exclusion may not apply to you, and you may have other rights depending on the law that applies to you.

5. OWNERSHIP RIGHTS

All title and intellectual property rights in and to the Program and any copies thereof are owned by THOMSON Entity or its suppliers. All title and intellectual property rights in and to the content which may be accessed through use of the Program is the property of the respective content owner and may be protected by applicable copyright or other intellectual property laws and treaties. This license grants you no rights to use such content.

6. LIMITATION OF LIABILITY

(a) TO THE MAXIMUM EXTENT PERMITTED BY APPLICABLE LAW, IN NO EVENT SHALL THOMSON ENTITY, OR ITS DEALERS BE LIABLE FOR ANY SPECIAL, INCIDENTAL, INDIRECT, OR CONSEQUENTIAL DAMAGES WHATSOEVER (INCLUDING, WITHOUT LIMITATION, DAMAGES FOR LOSS OF PROFITS, BUSINESS INTERRUPTION, CORRUPTION OF FILES, LOSS OF BUSINESS INFORMATION, OR ANY OTHER PECUNIARY LOSS) REGARDLESS OF CAUSE OR FORM OF ACTION, INCLUDING CONTRACT, TORT, OR NEGLIGENCE, ARISING OUT OF YOUR USE OF OR INABILITY TO USE THE PROGRAM, EVEN IF THOMSON ENTITY HAS BEEN ADVISED OF THE POSSIBILITY OF SUCH DAMAGES. BECAUSE SOME STATES AND JURISDICTIONS DO NOT ALLOW THE EXCLUSION OR LIMITATION OF LIABILITY OF CONSEQUENTIAL OR INCIDENTAL DAMAGES, THE ABOVE LIMITATION MAY NOT APPLY TO YOU.

(b) YOU ASSUME RESPONSIBILITY FOR THE SELECTION OF THE APPROPRIATE PROGRAM TO ACHIEVE YOUR INTENDED RESULTS, AND FOR THE INSTALLATION, USE, AND RESULTS OBTAINED.

7. WINDOWS MEDIA

The software embedded within your A/V Device (the "Device Firmware") contains software licensed from Microsoft that enables you to play Windows Media Audio (WMA) files ("WMA Software"). The WMA Software is licensed to you for use with your A/V Device under the following conditions. By installing and using this version of the Device Firmware, you are agreeing to these conditions. IF YOU DO NOT AGREE TO THE END USER CONDITIONS OF THIS SECTION 7, DO NOT INSTALL OR USE THIS VERSION OF THE DEVICE FIRMWARE.

The WMA Software is protected by copyright and other intellectual property laws. This protection also extends to documentation for the WMA Software, whether in written or electronic form.

GRANT OF LICENSE. The WMA Software is only licensed to you as follows:

You may use this version of the Device Firmware containing the WMA Software only as such use relates to your A/V Device.

You may not reverse engineer, decompile, or disassemble the WMA Software, except and only to the extent that such activity is expressly permitted by applicable law.

You may transfer your right to use the Device Firmware only as part of a sale or transfer of your A/V Device, on the condition that the recipient agrees to the conditions set forth herein. If the version of the Device Firmware that you are transferring is an upgrade, you must also transfer all prior versions of the Device Firmware that you have which include the WMA Software.

MICROSOFT IS NOT PROVIDING ANY WARRANTY OF ANY KIND TO YOU FOR THE WMA SOFTWARE, AND MICROSOFT MAKES NO REPRESENTATION CONCERNING THE OPERABILITY OF THE WMA SOFTWARE.

The WMA Software is of U.S. origin. Any export of this version of the Device Firmware must comply with all applicable international and national laws, including the U.S. Export Administration Regulations, that apply to the WMA Software incorporated in the Device Firmware.

Content providers are using the digital rights management technology for Windows Media contained in your A/V Device ("WM-DRM") to protect the integrity of their content ("Secure Content") so that their intellectual property, including copyrights, in such content is not misappropriated. Your A/V Device uses WM-DRM software to play Secure Content ("WM-DRM Software"). If the security of the WM-DRM Software in your A/V Device has been compromised, owners of Secure Content ("Secure Content Owners") may request that Microsoft revoke the WM-DRM Software's right to acquire new licenses to copy, display, and/or play Secure Content. Revocation does not alter the WM-DRM Software's ability to play unprotected content. A list of revoked WM-DRM Software is sent to your A/V Device whenever you download a license for Secure Content from the Internet or from a computer. Microsoft may, in conjunction with such license, also download revocation lists onto your A/V Device on behalf of Secure Content Owners.

End User License Agreement

EN

8. THIRD PARTY SOFTWARE

ANY THIRD PARTY SOFTWARE THAT MAY BE PROVIDED WITH THE PROGRAM IS INCLUDED FOR USE AT YOUR OPTION. IF YOU CHOOSE TO USE SUCH THIRD PARTY SOFTWARE, THEN SUCH USE SHALL BE GOVERNED BY SUCH THIRD PARTY'S LICENSE AGREEMENT, AN ELECTRONIC COPY OF WHICH WILL BE INSTALLED IN THE APPROPRIATE FOLDER ON YOUR COMPUTER UPON INSTALLATION OF THE SOFTWARE. THOMSON ENTITY IS NOT RESPONSIBLE FOR ANY THIRD PARTY'S SOFTWARE AND SHALL HAVE NO LIABILITY FOR YOUR USE OF THIRD PARTY SOFTWARE.

9. GOVERNING LAW

If you acquired this A/V Device in the United States, this EULA shall be governed and construed in accordance with the laws of the State of Indiana, U.S.A. without regard to its conflict of laws principles. If you acquired this A/V Device within the European Union, this EULA shall be governed and construed in accordance with the laws of France, without regard to its conflict of laws principles. If you acquired this A/V Device outside the United States or the European Union, then local law may apply.

10. GENERAL TERMS

This EULA can only be modified by a written agreement signed by you and THOMSON Entity, and changes from the terms and conditions of this EULA made in any other manner will be of no effect. If any portion of this EULA shall be held invalid, illegal, or unenforceable, the validity, legality, and enforceability of the remainder of the Agreement shall not in any way be affected or impaired thereby. This EULA is the complete and exclusive statement of the agreement between you and THOMSON Entity, which supersedes all proposals or prior agreements, oral or written, and all other communications between you and THOMSON Entity, relating to the subject matter of this hereof. "THOMSON Group Entity" when used in this EULA shall mean any person, corporation, or other organization, domestic or foreign, including but not limited to subsidiaries, that is directly or indirectly controlled by Thomson, French company. For purposes of this definition only, the term "control" means the possession of the power to direct or cause the direction of the management and policies of an entity, whether by ownership of voting stock or partnership interest, by contract, or otherwise, including direct or indirect ownership of more than fifty percent (50%) of the voting interest in the entity in question.

Table of Contents

EN

End User License Agreement

Before You Begin1

Computer System Requirements . . .1	
What's so special about this mp3 player?2	

Getting Started3

Insert the Included CD-ROM into CD-ROM Drive3	
--	--

Connecting to the Computer . .4

Connecting the Player to the Computer4	
---	--

Transferring Music5

Transferring Files to the Digital Audio Player5	
Transferring Files via Yahoo! Music Engine6	
Transferring Files via Windows Media Player7	
Transferring Files via Windows Explorer (Drag and Drop)8	

Transferring Pictures and Videos9	
--	--

Disconnecting the Player10

Disconnecting Your Player from the Computer10	
--	--

Troubleshooting Tips11

The descriptions and characteristics given in this document are given as a general indication and not as a guarantee. In order to provide the highest quality product possible, we reserve the right to make any improvement or modification without prior notice. The English version serves as the final reference on all products and operational details should any discrepancies arise in other languages.

Before You Begin

EN

Dear RCA Customer,
Thank you for purchasing the RCA Digital Audio Player. Our products will play open mp3 and Windows Media™ audio (WMA) content and for certain models, content purchased from most online music download services.

After purchasing and downloading music to your PC, you are now ready to move content to your player. To transfer the music, you may use the applications recommended by the online music download service.

Computer System Requirements

- Pentium III 500MHz or higher recommended
- Windows® 2000, or XP
- Internet Explorer 4.0 or higher
- Internet access
- 200MB free hard disk space for the software
- 64MB RAM (128 MB recommended)
- CD-ROM drive capable of digital audio extraction
- USB port (2.0 recommended)
- Sound card



Warning:

Use of this product is for your personal use only. Unauthorized recording or duplication of copyrighted material may infringe upon the rights of third parties and may be contrary to copyright laws.

Before You Begin

What's so special about this mp3 player?

This player is meant to play mp3 and Windows Media™ audio files transferred in the built-in flash memory. To do so, you need the use of a Windows computer with USB port and a music management software (Yahoo! Music Engine or Window Media Player recommended).

The Music Management CD that comes with your Digital Audio Player contains all of the necessary software components you need to make your Digital Audio Player work properly.

These components do the following:

- to use a music management software to organize your music collection,
- to enable you to transfer files from your computer to your Digital Audio Player.

EN

Getting Started

EN

Inserting the Included CD-ROM into CD-ROM Drive

1. Turn on your computer and place the Music Management CD that comes with your digital audio player into your computer.



Note:

Don't connect the USB device to the PC or digital audio player before or during the CD-ROM installation.

This player is supported by Windows 2000 and XP only. No driver for Windows 98 is provided.

2. If the setup screen does not appear, double click My Computer, double click your CD-ROM drive icon, and double click "Install" to run the installer.



Note: The Music Management CD may contain one or more

music management software that can help transfer music content to your digital audio player. Please refer to the relevant section in the user manual for basic transfer operations of your installed software.

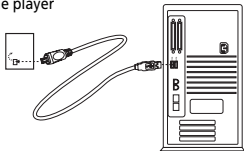
Connecting to the Computer

EN

Connecting the Player to the Computer

Connect the Digital Audio Player to your computer. If a USB connection cable is provided, connect it to the player first before the computer. The larger end of the cable should be connected to the computer while the smaller end to the player.

The player



Some models can be directly connected to the USB port of the computer. If necessary, an optional USB extension cable can be used.

The digital audio player will appear as a removable disk drive.



Note

It might take several seconds for the device (the Digital Audio Player) to be detected, especially in Windows 2000/XP. Click Refresh in My Computer or Explorer to make sure the device has been detected.



Note

The Digital Audio Player is capable of transferring files at full-speed when a USB 2.0 connection is used. USB 2.0 is up to 40 times faster than USB 1.1. If a USB 2.0 port is available on your computer, use it to connect to your Digital Audio Player. The player is still backward compatible with the older USB 1.1 ports. However, you will not be able to take full advantage of the potential speed increase.

Transferring Music

EN

Transferring Files to a Digital Audio Player

Depending on the availability of software on your Music Management CD specific to your digital audio player, you can transfer files to your Digital Audio Player via 1) Yahoo! Music Engine (Windows XP only), 2) Windows Media Player or 3) Windows Explorer (requires no software installation).

If your Digital Audio Player isn't already connected to your computer, connect it to the computer using the provided USB cable as illustrated on the previous page.

- Transferring files via Yahoo! Music Engine (Windows XP only) - refer to page 6,
- Transferring files via Windows Media Player - refer to page 7,
- Transferring files via Windows Explorer (drag-and-drop) - refer to page 8.



Attention

Do not disconnect the USB connection during music download. Doing so may corrupt system files or the files being downloaded.



Note

Secure music download files can be transferred to your player through Windows Media Player or Yahoo! Music Engine. (Note: Services and applications must be Windows Media audio-compliant and support Digital Rights Management. Windows XP with Service Pack 1 required.) (Apple iTunes™ music content is not supported).

For more information on Yahoo! Music Engine, visit <http://music.yahoo.com/>

For more information on Windows Media Player, visit <http://www.microsoft.com/windows/windowsmedia>.

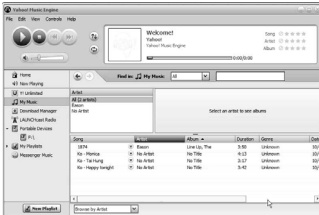
Some wma files may be DRM protected. You must acquire licenses for DRM protected wma files before they can be played on the player. For more information, go to www.microsoft.com/windows/windowsmedia/drm

Transferring Music

EN

Transferring Files via Yahoo! Music Engine (Windows XP only)

Yahoo! Music Engine lets you manage your music easily and organize like a pro. Create your own playlists: music for work, the gym, or even dinner. You can also buy music and transfer to your digital audio player in seconds. Just drag and drop and you're done. For more information on the installation and operations, please visit: <http://music.yahoo.com/>



1. Launch the Yahoo! Music Engine.
2. Attach the digital audio player to your computer. You should see the Jukebox name appear in the left navigation pane.
3. In the Yahoo! Music Engine, click My Music or click on a playlist on the left navigation pane.
4. From a playlist (My Playlists in the left navigation pane): at the bottom of the Yahoo! Music Engine window, click the

Transfer to Device button and select the drive letter to where the playlist is to be transferred. **OR**

5. From My Music: drag and drop files from My Music to the digital audio player. (You may also drag artists and albums from My Music).
6. The Yahoo! Music Engine will check to see if there is sufficient storage space on the device to copy the songs. If not, you will have to reduce the number of songs you are transferring.



Note: Yahoo! Music Engine only works on Windows XP. with Service Pack 1 or higher.



Attention
Make sure all data are transferred to the Digital Audio Player before unplugging the USB connection.

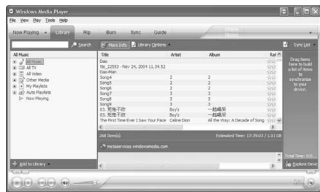
Transferring Music

EN

Transferring Files via Windows Media Player

If you want to take your music collection with you, you can easily synchronize items in your library to your digital audio player. The Sync feature in the latest version of Windows Media Player and allows you to synchronize files in categories and playlists in your library to your digital audio player. For complete details, see the “Synchronizing media to your device” topic in the Windows Media Player help documentation.

1. Connect your player to the computer and open Windows Media Player, select Library from the menu bar, a screen will appear as below:



2. From the left column, select the songs, categories and/or playlist items you want to copy to the player.
3. Drag the selected items to the right column.

4. Select Sync from the menu bar, a screen will appear as below:



5. Select Start Sync, the selected items will now be automatically transferred to your player.



Attention

Make sure all data are transferred to the Digital Audio Player before unplugging the USB connection.

Transferring Music

Transferring Files via Windows Explorer (Drag and Drop)

From Windows Explorer, highlight all the files/folders you want to transfer to your Digital Audio Player and drag them to the drive letter that is associated with it.



Attention

Make sure all data are transferred to the Digital Audio Player before unplugging the USB connection.



Attention

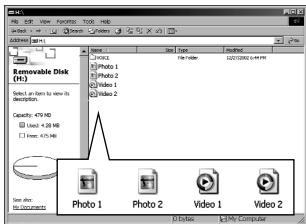
Some wma files may be DRM protected and they must be transferred to your player via music management software that supports Windows Media DRM such as Yahoo! Music Engine and Windows Media Player. You cannot listen to these protected files if transferred via Windows Explorer.

For more information, go to www.microsoft.com/windows/windowsmedia/drm

Transferring Pictures and Videos

EN

Picture and converted video files should be transferred via Windows Explorer (drag-and-drop) in the shown root directory. Picture and video files will not play from any created subfolders.



Before transferring video files to your portable device, you must use the video transcoder software to convert the video to a format suitable for playing in your portable device. This video transcoder software relies on the video codecs already installed in your computer.


Make sure the video file you wish to convert plays on your computer before using the video transcoder software. Note that some video files that play on your computer may rely on specialized video playback applications that are not compatible with the video transcoder software.



Attention
Make sure all data are transferred to the Digital Audio Player before unplugging the USB connection.

Disconnecting the Player


Disconnecting Your Player from the Computer

For Windows XP, from the System Tray, double click the left mouse button on the icon  and select *Safely Remove Hardware*. Select the drive corresponding to your player and click **STOP**.



The *Stop a Hardware device* screen appears. Select the device to be stopped again for confirmation and click **OK**.



You can also stop your player by left clicking on the  icon from the system tray and selecting the drive corresponding to your player.

Before disconnecting the USB connection from the computer or the Digital Audio Player, be sure the "Safe to Remove Hardware" message is displayed.



Attention

If you want to go back to USB mode for file transfer at this stage, you need to unplug and connect the player to the PC again.



Attention

Make sure all data are transferred to the Digital Audio Player before unplugging the USB connection.

The description on this page is based on Windows XP. If you are running other operating systems, there may be some differences. See the Windows Help for details about safely removing hardware.

Troubleshooting Tips

EN

After connecting the player to computer, "USB connected" does not appear on the display.

- Make sure the device is powered on. Some players do not automatically come on when plugged into the computer.
- Make sure that the USB connections to the computer and device are securely in.

Cannot access the player via Windows 2000 computer.

- Install the Service Pack 3 for Windows 2000. Visit www.windowsupdate.microsoft.com to check for the latest updates.

Cannot playback tracks on the player.

- Make sure audio tracks are encoded in the mp3 or Windows Media formats at supported bitrates. Please check the player's user manual for bitrates supported.
- WMA files may be DRM protected and you don't have the proper rights (license) to play the files.
- Check the website and/or application help system of the music download service provider from where the content was purchased from for license acquisition details.
- For more information on how license acquisition works, go to www.microsoft.com/windowsmedia/drm

What does the PlaysForSure logo mean? (available on certain models)

- PlaysForSure is a new logo program from Microsoft®. Consumers can match the PlaysForSure logo on a large selection of devices and online music stores. If you see the logo, you'll know your digital media will play for sure.
- For more information on the Microsoft PlaysForSure program, visit www.PlaysForSure.com.
- For more information on RCA PlaysForSure devices, visit www.rca.com.

The device cannot be recognized by Audible Manager

- Your previously installed Audible Manager may not work with this player. You have to reinstall Audible Manager completely by following the instructions from your CD-ROM which comes with this digital music player.

IMPORTADOR

Comercializadora Thomson de México, S.A. de C.V.
Álvaro Obregón No. 151. Piso 13.
Col. Roma. Delegación Cuauhtémoc
C.P. 06700. México, D.F.
Telefono: 52-55-11-020360
RFC: CTM-980723-KS5

Thomson Inc.
P.O. Box 1976
Indianapolis, IN 46206-1976
© 2006 Thomson Inc.
Trademark(s) ® Registered
Marca(s) ® Registrada(s)
Marque(s) ® Déposé(e)
www.rca.com
Printed In China / Impreso en China

TOCOM (v1.0) MC2600