

RCA

Lyra Jukebox User's Guide

Changing Entertainment. Again.



RD2850 / RD2854

It is important to read this instruction book prior to using your new product for the first time.

Important Information

WARNING

To reduce the risk of fire or electric shock, do not expose this product or AC charger to rain or moisture.

CAUTION

RISK OF ELECTRIC SHOCK DO NOT OPEN



This symbol indicates "dangerous voltage" inside the product that presents a risk of electric shock or personal injury.



This symbol indicates important instructions accompanying the product.

To reduce the risk of electric shock, do not remove cover (or back). No user serviceable parts inside. Refer servicing to qualified service personnel.

Battery can only be repaired or replaced by qualified service personnel.

Technical Specification

Product: Lyra Jukebox
Brand: RCA
Model: RD2850 / RD2854

Electrical Rating

Power supply for charger : 100V-240V ~ 50-60Hz
Charger Output Power : 9.9Watts
DC : 3.7 V Li-ion battery (built -in)

Importer

Comercializadora Thomson de México, S.A. de C.V.
Álvaro Obregón No. 151. Piso 13.
Col. Roma. Delegación Cuauhtémoc
C.P. 06700. México, D.F.
Telefono: 52-55-11-020360
RFC: CTM-980723-KS5

Product Registration

Please fill out the product registration card and return it immediately. Returning this card allows us to contact you if needed.

Product Information

Keep your sales receipt for proof of purchase to obtain warranty parts and service and attach it here. Record the serial number and model numbers — both numbers are located on the product.

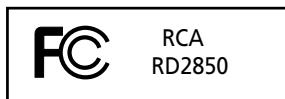
Model No. _____

Serial No. _____

Purchase Date: _____

Place of purchase: _____

Important Information



Equipment tested for compliance as a complete unit



Equipment tested for compliance as a complete unit

FCC Regulations state that unauthorized changes or modifications to this equipment may void the user's authority to operate it.

FEDERAL COMMUNICATIONS COMMISSION INFORMATION

This equipment has been tested and found to comply with the limits for a Class B digital device, pursuant to Part 15 of FCC Rules. These limits are designed to provide reasonable protection against harmful interference in a residential installation. This equipment generates, uses, and can radiate radio frequency energy and, if not installed and used in accordance with the instructions, may cause harmful interference to radio communications. However, there is no guarantee that interference will not occur in a particular installation. If this equipment does cause harmful interference to radio or television reception, which can be determined by turning the equipment off and on, the user is encouraged to try to correct the interference by one or more of the following measures

- Reorient or relocate the receiving antenna.
- Increase the separation between the equipment and receiver.
- Connect the equipment into an outlet on a circuit different from that to which the receiver is connected.
- Consult the dealer or an experienced radio/TV technician for help.

This device complies with Part 15 of the FCC Rules. Operation is subject to the following two conditions: (1) This device may not cause harmful interference, and (2) this device must accept any interference received, including interference that may cause undesired operation.

In accordance with FCC requirements, changes or modifications not expressly approved by Thomson Inc. could void the user's authority to operate this product.

This device generates and uses radio frequency (RF) energy, and if not installed and used properly, this equipment may cause interference to radio and television reception.

If this equipment does cause interference to radio or television reception (which you can determine by unplugging the unit), try to correct the interference by one or more of the following measures:

- Re-orient the receiving antenna (that is, the antenna for the radio or television that is "receiving" the interference).
- Move the unit away from the equipment that is receiving interference.
- Plug the unit into a different wall outlet so that the unit and the equipment receiving interference are on different branch circuits.

If these measures do not eliminate the interference, please consult your dealer or an experienced radio/television technician for additional suggestions. Also, the Federal Communications Commission has prepared a helpful booklet, "How To Identify and Resolve Radio TV Interference Problems." This booklet is available from the U.S. Government Printing Office, Washington, DC 20402. Please specify stock number 004-000-00345-4 when ordering copies.

This Class B digital apparatus complies with Canadian ICES-003.
Cet appareil numérique de la class B est conforme à la norme du NMB-003 du Canada

End User License Agreement

IMPORTANT-READ CAREFULLY: This End User License Agreement (“Agreement”) is a legal agreement between you and Thomson Inc. (“Thomson”) for the RCA Lyra Audio Device application/driver software program and associated documentation, if any (“Program”).

ACKNOWLEDGMENT

BY INSTALLING THE SOFTWARE OR CLICKING ON THE ACCEPTANCE BUTTON OF THE SOFTWARE, COPYING OR OTHERWISE USING THE PROGRAM, YOU ACKNOWLEDGE AND AGREE THAT YOU HAVE READ THIS AGREEMENT, UNDERSTAND IT, AND AGREE TO BE BOUND BY ITS TERMS AND CONDITIONS. IF YOU DO NOT AGREE TO THE TERMS OF THIS LICENSE AGREEMENT, CLICK ON THE REJECTION BUTTON AND/OR DO NOT INSTALL THE SOFTWARE AND/OR DO NOT USE THE PROGRAM.

LICENSE

a) You are granted the license (i) to use the Program on a single workstation and (ii) to make one (1) copy of the Program into any machine-readable form for backup of the Program, provided the copy contains all of the original Program’s proprietary notices.

b) You may transfer the Program and license, only as part of the Lyra Audio Device, to another party if the other party agrees to accept the terms and conditions of this Agreement. If you transfer the Program, you must at the same time either transfer all copies to the same party or destroy any copies not transferred.

LICENSE RESTRICTIONS

a) Except for the licenses expressly granted to you in this Agreement, no other licenses are implied.

b) You may not (i) modify, translate, reverse engineer, decompile, disassemble (except to the extent that this restriction is expressly prohibited by law) or create derivative works based upon the Program or (ii) copy the Program, except as expressly permitted herein. You agree that you shall only use the Program in a manner that complies with all applicable laws in the jurisdictions in which you use the Program, including, but not limited to, applicable restrictions concerning copyright and other intellectual property rights.

End User License Agreement

c) The Program may contain pre-release code that does not perform at the level of a final code release. In this case, the Program may not operate properly. Updated versions of the Program can be downloaded from www.rca.com.

d) Thomson is not obligated to provide support services for the Program.

e) The Program is provided with "RESTRICTED RIGHTS". Use, duplication, or disclosure by the U.S. Government is subject to restrictions as set forth in subparagraph (c)(1)(ii) of DFARS 252.227-7013, or FAR 52.227-19, or in FAR 52.227-14 Alt. III, as applicable.

TERM AND TERMINATION

a) The license is effective on the date you accept this Agreement, and remains in effect until terminated by either party.

b) You may terminate this license without any notice or delay, by destroying or permanently erasing the Program and all copies thereof.

c) If you use, copy, modify, or transfer the Program, or any copy, in whole or part, except as expressly provided for in this license, your license is automatically terminated.

d) When the license is terminated, you must destroy or permanently erase the Program and all copies thereof.

WARRANTY DISCLAIMER

THE PROGRAM IS PROVIDED "AS IS" WITHOUT WARRANTY OF ANY KIND, EITHER EXPRESSED OR IMPLIED, INCLUDING, BUT NOT LIMITED TO THE IMPLIED WARRANTIES OF MERCHANTABILITY, FITNESS FOR A PARTICULAR PURPOSE, TITLE OR NON-INFRINGEMENT. THE ENTIRE RISK AS TO THE QUALITY AND PERFORMANCE OF THE PROGRAM IS WITH YOU. SHOULD THE PROGRAM PROVE DEFECTIVE, YOU (AND NOT THOMSON, ITS SUPPLIERS, ITS AFFILIATES OR ITS DEALERS) ASSUME THE ENTIRE COST FOR ALL NECESSARY REPAIR OR CORRECTION.

This exclusion of warranty may not be allowed under some applicable laws. As a result, the above exclusion may not apply to you, and you may have other rights depending on the law that applies to you.

OWNERSHIP RIGHTS

All title and intellectual property rights in and to the Program and any copies thereof are owned by Thomson or its suppliers. All title and intellectual property rights in and to the content which may be accessed through use of the Program is the property of the respective content owner and may be protected by applicable copyright or other intellectual property laws and treaties. This license grants you no rights to use such content.

End User License Agreement

LIMITATION OF LIABILITY

a) TO THE MAXIMUM EXTENT PERMITTED BY APPLICABLE LAW, IN NO EVENT SHALL THOMSON, ITS AFFILIATES, OR ITS DEALERS BE LIABLE FOR ANY SPECIAL, INCIDENTAL, INDIRECT OR CONSEQUENTIAL DAMAGES WHATSOEVER (INCLUDING, WITHOUT LIMITATION, DAMAGES FOR LOSS OF PROFITS, BUSINESS INTERRUPTION, CORRUPTION OF FILES, LOSS OF BUSINESS INFORMATION OR ANY OTHER PECUNIARY LOSS) REGARDLESS OF CAUSE OR FORM OF ACTION, INCLUDING CONTRACT, TORT OR NEGLIGENCE, ARISING OUT OF THE USE OF OR INABILITY TO USE THE PROGRAM, EVEN IF THOMSON HAS BEEN ADVISED OF THE POSSIBILITY OF SUCH DAMAGES. BECAUSE SOME STATES AND JURISDICTIONS DO NOT ALLOW THE EXCLUSION OR LIMITATION OF LIABILITY OF CONSEQUENTIAL OR INCIDENTAL DAMAGES, THE ABOVE LIMITATION MAY NOT APPLY TO YOU.

b) YOU ASSUME RESPONSIBILITY FOR THE SELECTION OF THE APPROPRIATE PROGRAM TO ACHIEVE YOUR INTENDED RESULTS, AND FOR THE INSTALLATION, USE, AND RESULTS OBTAINED.

WINDOWS MEDIA

This version of the Lyra Audio Device Player ("Lyra Player") contains software licensed from Microsoft that enables you to play Windows Media Audio (WMA) files ("WMA Software"). The WMA Software is licensed to you for use with the RCA/ THOMSON Portable Audio Device digital music player under the following conditions. By installing and using this version of the Lyra Player, you are agreeing to these conditions. IF YOU DO NOT AGREE TO THE CONDITIONS OF THIS END USER LICENSE AGREEMENT, DO NOT INSTALL OR USE THIS VERSION OF THE Lyra Player.

The WMA Software is protected by copyright and other intellectual property laws. This protection also extends to documentation for the WMA Software, whether in written or electronic form.

GRANT OF LICENSE. The WMA Software is only licensed to you as follows:

You may use this version of the Lyra Player containing the WMA Software only with the Portable Audio Device player.

You may not reverse engineer, decompile, or disassemble the WMA Software, except and only to the extent that such activity is expressly permitted by applicable law in spite of this limitation.

End User License Agreement

You may transfer your right to use this version of the Lyra Player only as part of a sale or transfer of your Portable Audio Device player, on the condition that the recipient agrees to the conditions in this End User License Agreement. If the version of the Lyra Player that you are transferring is an upgrade, you must also transfer all prior versions of the Lyra Player that you have which include the WMA Software.

MICROSOFT IS NOT PROVIDING ANY WARRANTY OF ANY KIND TO YOU FOR THE WMA SOFTWARE, AND MICROSOFT MAKES NO REPRESENTATION CONCERNING THE OPERABILITY OF THE WMA SOFTWARE.

The WMA Software is of U.S. origin. Any export of this version of the Lyra Player must comply with all applicable international and national laws, including the U.S. Export Administration Regulations, that apply to the WMA Software incorporated in the Lyra Player.

THIRD PARTY SOFTWARE

ANY THIRD PARTY SOFTWARE THAT MAY BE PROVIDED WITH THE PROGRAM IS INCLUDED FOR USE AT YOUR OPTION. IF YOU CHOOSE TO USE SUCH THIRD PARTY SOFTWARE, THEN SUCH USE SHALL BE GOVERNED BY SUCH THIRD PARTY'S LICENSE AGREEMENT, AN ELECTRONIC COPY OF WHICH WILL BE INSTALLED IN THE APPROPRIATE FOLDER ON YOUR COMPUTER UPON INSTALLATION OF THE SOFTWARE. THOMSON IS NOT RESPONSIBLE FOR ANY THIRD PARTY'S SOFTWARE AND SHALL HAVE NO LIABILITY FOR YOUR USE OF THIRD PARTY SOFTWARE.

GOVERNING LAW

This Agreement is governed by the laws of the State of Indiana, U.S.A. without regard to its conflict of laws.

GENERAL TERMS

This Agreement can only be modified by a written agreement signed by you and Thomson, and changes from the terms and conditions of this Agreement made in any other manner will be of no effect. If any portion of this Agreement shall be held invalid, illegal, or unenforceable, the validity, legality, and enforceability of the remainder of the Agreement shall not in any way be affected or impaired thereby. This Agreement is the complete and exclusive statement of the agreement between you and Thomson, which supersedes all proposals or prior agreements, oral or written, and all other communications between you and Thomson, relating to the subject matter of this Agreement.

Table of Contents

Important Information	2
Warning	2
FEDERAL COMMUNICATIONS COMMISSION INFORMATION	3
End User License Agreement	4
Table of Content	8
Before You Begin	10
Unpacking Your Unit	10
Things to consider before you get started... ..	11
Computer System Requirements	11
Warning	11
Caution	11
Caution While Driving	11
Back up your data	12
Important Battery Information	12
Getting Started: Software Setup	13
Inserting the Included CD-ROM into CD-ROM Drive	13
Installing Software Components	14
Install the USB Driver (Windows 98SE and Me Only)	14
Install System Applications	15
Install MusicMatch Jukebox	16
Install Additional Services	17
Launch the MusicMatch software	17
Install MusicMatch Plug-in	17
Connecting Lyra HD to the Computer	18
Transferring Files to Lyra Jukebox	18
Transfer Files via MusicMatch Jukebox	19
Create Pre-defined Playlists and Transferring them to the Jukebox	20
Transfer Files via Windows Explorer (Drag and Drop)	20
Disconnecting Your Lyra from the Computer	21
System Tray Applications	22
Profile	22
Updating System File	23
Verify User Playlists	23
LyraSync	24
MyDislikes	25
Lyra•Jukebox	26
Overview of General Controls	26
Front View	26
Navigation Controls	26
Left View	27
Right View	27
Top View	27
Display Overview	28
Menu Navigation	29
Basic Operation	29

Table of Contents

Selecting Music Mode	30
Music Playback Display	30
Music Playback Operation	31
Step-by-Step Example	32
Navigation Menu	34
Playlists	36
My Selections	36
My Dislikes	37
View User Playlists	38
Pre-defined Playlists	39
Save MySelections or MyDislikes as a Playlist	39
Clear Playlists	40
All Files	40
Additional Features	41
Repeat	41
Shuffle	42
Adjusting DSP Settings	43
Personalizing DSP Output (Graphic EQ menu item)	43
Profiler	44
Selecting Radio Mode	45
Preset Station	45
Tuning to a Station	45
Setting Preset	46
Selecting Preset Station	47
Clearing Preset	47
Suppressing Stereo Signal	47
Record FM Radio	48
Selecting Recording Duration	49
Selecting Recording Quality	49
View FM Recording	49
System Settings	50
Customize Music Menu	51
System Info	52
Connecting your Lyra Jukebox to your Car Stereo	53
Connecting Your Lyra Jukebox on your stereo system	54
Check for Updates	55
Portable Hard Drive Capability	55
Additional Information	56
Tips and Troubleshooting	56
FAQ (Frequently Asked Questions)	57
Specifications & System Requirements	57
Hardware	57
Hard Disc	58
Software	58
PC Hardware Requirements	59
Accessories	59
Miscellaneous Specifications	59
Limited Warranty (U.S.)	60
Limited Warranty (Canada)	63

Before You Begin

Unpacking Your Unit

Your Lyra Jukebox came with everything you need to make music portable — all of the items shown below should have been packed in the box with your Lyra Jukebox.



Lyra Jukebox



Music Management CD
Contains the Lyra Jukebox applications & MusicMatch Jukebox software



AC/DC adapter charger



Mini USB cable
Plug the small end into the USB on your Lyra Jukebox, and plug the other end into your computer's USB port. Go to page 18 for connection details.



Line out cable — connects Lyra Jukebox to your audio system.
For details, go to page 54.



Car adapter kit
Car cord adapter / cassette adapter
Go to page 53 for instructions.



Clip Phones
Go to page 33 for instructions.

Illustrations contained within this publication are for representation only and subject to change.

Things to consider before you get started...

Computer System Requirements

- Pentium III 500MHz or higher recommended
Macintosh iMac G3 or higher
- Windows @98SE, Me, 2000, or XP
Mac OS X Version 10.1.5 or higher
- Internet Explorer 4.0 or higher
- Internet access
- 100MB free hard disk space for the software
- 64MB RAM (128 MB recommended)
- CD-ROM drive capable of digital audio extraction
- USB port (2.0 recommended)
- Installed sound card
- 16-bit color video card

Warning

Use of this product is for your personal use only. Unauthorized recording or duplication of copyrighted material may infringe upon the rights of third parties and may be contrary to copyright laws.

Caution

- Keep product out of direct sunlight. Exposure to direct sunlight or extreme heat (such as inside a parked car) may cause damage or malfunction.
- Do not expose to rain or moisture.

Caution While Driving

Use of headphones while operating an automobile or moving vehicle is not recommended and is unlawful in some states and areas. Be careful and attentive on the road. Stop operation of the unit if you find it disruptive or distracting while driving.

Before You Begin

Back up your data

As with any portable device that has a hard drive, you must back up the drive regularly. RCA and Thomson are not responsible for lost data.

Important Battery Information

- The battery used in this device may present a risk of fire or chemical burn if mistreated. Do not separately recharge, disassemble, heat above 100C (212F), or incinerate.
- **Battery replacement should only be made by trained technicians. Refer to Limited Warranty (page 60) for details.**
- Do not attempt to open the unit. No user serviceable parts inside.
- To reduce risk of injury, charge only rechargeable batteries recommended by the manufacturer for this product. Other types of batteries may burst causing damage and personal injury.
- Keep the unit away from children. Do not disassemble or dispose product in fire.
- Use only the specified chargers which were packaged with the product. Use of another charger may present a risk of fire or explosion.

Getting Started: Software Setup

The Music Management CD that came with your Lyra Jukebox contains all of the necessary software components you need to make your Lyra Jukebox work properly.

These components do the following:

- install USB driver for Windows 98SE/Me users (Refer to page 14)
- enable you to transfer files from your computer to your Lyra Jukebox
- profile, format and sort the contents, update the system files (Refer to page 22)
- use the MusicMatch Jukebox software to organize your music collection and transfer the music to your Lyra Jukebox

The MusicMatch Jukebox™ software compresses audio files (from music CDs) to the mp3, mp3PRO or Windows Media Audio (WMA) format so you can play them on your Lyra Jukebox. The MusicMatch software also enables you to download files from the internet that are already compressed and then transfer those files to your Lyra Jukebox (or play the music on your computer).

Inserting the Included CD-ROM into CD-ROM Drive

Note: Do not connect your Lyra Jukebox to your computer before you have installed the required drivers. (Windows 98SE/Me only)

1. Turn on your computer and place the Music Management CD that came with your Lyra Jukebox into your computer.

IMPORTANT: Don't connect the USB cable to the PC or Lyra Jukebox before or during the driver installation.

If you're running Windows 2000, no additional drivers are required.

*If you're running Windows 98SE/Me, you **must** install the USB drivers from the CD-ROM in order for the Lyra Personal Jukebox to function properly.*

2. If the setup screen does not appear, double click *My Computer*, double click your CD-ROM drive icon, and double click *Install* to run the installer.

The Lyra Jukebox and MusicMatch Jukebox quick start program runs.

Getting Started: Software Setup



3. Select your Lyra model on the startup screen and click *Install* to access installation programs corresponding to your Lyra device.



4. Click on the software component you want to install. See next Section for details.

Installing Software Components

Install the USB Driver (Windows 98SE and Me Only)

For Windows 98SE and Me systems, you need to install a USB driver before your computer can recognize your Lyra Jukebox.



1. Click *Install USB Driver/System Applications* to install the required driver for your Lyra Jukebox.
2. Follow the on-screen instructions to install all necessary files.
3. Click *Finish* to complete installation and return to the startup screen.

Install System Applications



1. Click *Install System Application* to install applications that will help you better manage your Lyra Jukebox.

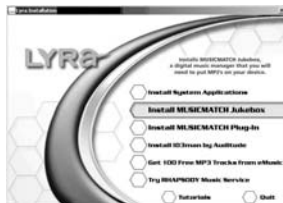
Note: The installation program will detect whether your system requires a USB driver. If you see the *Install USB driver/System Applications* option, click it to install the USB driver. (Refer to the previous section for details). The program will install the USB driver first, restart the computer and then begin to install the System Application Software.

2. Follow the on-screen instructions to install all necessary files.
3. Click *Finish* to complete installation and return to the startup screen.

(Refer to page 22 for further system application details)

Install MusicMatch Jukebox

MusicMatch Jukebox is a music management software used to organize and manage digital audio files and can be used to transfer the music to your Lyra Jukebox.



1. Click *Install MusicMatch Jukebox* to run the MusicMatch setup program.

Wait while the installation program begins. It may take up to 20 seconds for the installer to start.

Note: It is recommended to uninstall any previous installations of the MusicMatch Jukebox software before proceeding. After the uninstall process has been completed, delete the MusicMatch folder found under C:\Program Files.

If you do not wish to uninstall the previous MusicMatch Jukebox software, go to “Install MusicMatch Plug-in” on page 17.

2. Follow the on-screen instructions to complete MusicMatch installation.



For more information on MusicMatch Jukebox, click *Tutorials* on the CD or go to www.musicmatch.com.

Getting Started: Software Setup

Install MusicMatch Plug-in

MusicMatch requires a plug-in for your particular device in order to transfer files from your computer to your Lyra Jukebox.



1. Click *Install MusicMatch Plug-in*.
2. Follow the on-screen instructions to install all necessary files.
3. Click *Finish* to complete installation and return to startup screen.

Install Additional Services

Click on *Install ID3man by Auditude*, *Get 100 Free mp3 Tracks from eMusic*, *Moodlogic* or *Try Rhapsody Music services* for additional digital music services provided by our partners.

Launch the MusicMatch software



The MusicMatch icon found in your computer's system tray.

The MusicMatch software converts audio files to the mp3, mp3PRO and WMA format so you can play them on your Lyra Jukebox.

1. Remove the Music Management CD from your computer.
2. Start the MusicMatch Jukebox software (double click on the MusicMatch icon in your system tray or on your desktop).

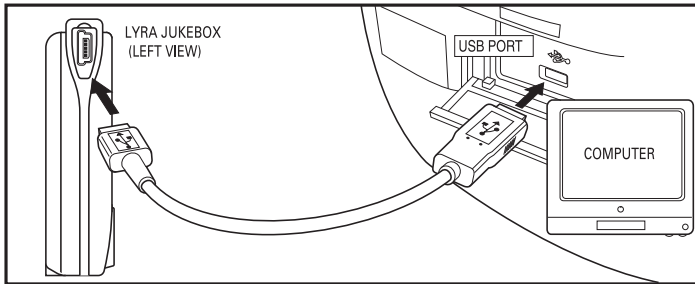
Getting Started: Software Setup

Connecting Lyra HD to the Computer

Connect the Lyra Jukebox to your computer with the mini USB cable provided. Turn on the unit by pressing the **ON** button. Press and hold the **Play** button to start USB transfer. The Lyra Jukebox will appear as a Removal Disk drive letter.

Note: It might take several seconds for the device (the Lyra Jukebox) to be detected, especially in Windows 2000/XP. Click Refresh in My Computer or Explorer to make sure the device has been detected.

Note: The Lyra Jukebox is capable of transferring files at hi-speed mode of USB 2.0. This is up to 40 times faster than USB 1.1. If USB 2.0 port is available on your computer, use it to connect to your Lyra Jukebox. The Lyra Jukebox is still backward compatible with the older USB 1.1 ports. However, you will not be able to take full advantage of the potential speed increase.



Transferring Files to Lyra Jukebox

You can transfer files to your Lyra Jukebox via MusicMatch Jukebox or via Windows Explorer.

If your Lyra Jukebox isn't already connected to your computer, connect the Lyra Jukebox to the computer using the provided USB cable as illustrated above.

Note: The USB port acts as a power source for your Lyra Jukebox.

Note: Do not disconnect the USB cable during music download. Doing so may corrupt system files or the files being downloaded.

Transfer Files via MusicMatch Jukebox

1. Drag and drop desired tracks from the *Music Library* to the *Playlist* display and save the playlist.

Note : *Be sure to save the playlist or it will not be displayed on the playlist window of the Portable Device Manager screen.*

2. From the menu area, select *Files/Send to Portable Device* or click *Send to Portable* under the copy item on the left side of the MusicMatch Jukebox screen to display the Portable Device Manager screen.
3. Click on *Options* and select your portable device under *Select Device*. Click *OK*. Your device should be listed under Portable Device.
4. Select the playlist item and drag it to the active device listed under Portable Device. Only those playlists saved in step 1 are displayed on the playlist window. The songs in the playlist will now be automatically transferred to your Lyra Player.

**USB 2.0
Hi-speed capable**

connected...

Do not unplug


During transfer a progress indicator appears in the *Portable Device Manager* screen, and “Do not unplug” flashes in the Lyra Jukebox’s LCD.



When the transfer is finished, the *Lyra Personal Jukebox Profiler* application may automatically run so it can sort/profile the newly transferred files.

You can run the profiler manually by right clicking on the Lyra icon on the System Tray Area. Refer to page 22 for details.

Caution: *Make sure all data are transferred to the Lyra Jukebox before unplugging the USB cable.*

If you're running Windows 2000 you must stop the device before unplugging it. Click the  icon (the Unplug or Eject hardware icon) from the system tray and select the USB Mass Storage device for the drive letter associated with the Lyra Jukebox, and select the device you want to stop. See the Windows Help for details about the Unplug or Eject Hardware topic.

Getting Started: Software Setup

Transfer Files via Windows Explorer (Drag and Drop)

If your Lyra Jukebox isn't already connected to your computer, connect the Lyra Jukebox to the computer using the provided USB cable as illustrated on page 18 and turn on the unit.



From Windows Explorer, highlight all the files/folders you want to transfer to your Lyra Jukebox and drag them to the drive letter that is associated with it.

Note: You must profile your contents after file transfer in order for the new files to appear in the Navigation Menus. Refer to page 22 for profiling details.

Create Pre-defined Playlists and Transferring them to the Jukebox

Pre-defined playlists can be created on your PC using MusicMatch Jukebox. Refer to the MusicMatch Jukebox User Manual for details. Note that only playlists created with songs stored on the Lyra Jukebox will work on the Lyra. Use Windows Explorer to transfer pre-defined playlists to your Lyra Jukebox.



If your Lyra Jukebox isn't already connected to your computer, connect it using the provided USB cable and turn the unit on.

From Windows Explorer, highlight the pre-defined playlists that you have created in MusicMatch Jukebox and drag them to the *lyra_playlists* directory in the drive letter associated with your Lyra Jukebox.


Note: You must profile your contents after file transfer in order for the new files to appear in the Navigation Menus. Refer to page 22 for profiling details.

Disconnecting Your Lyra from the Computer

USB 2.0
Hi-speed capable
connected...
Safe to unplug


***Note:** Before disconnecting the USB cable from the computer or the Lyra Jukebox, be sure the “Safe to unplug” message is displayed.*



From the System Tray, double click the left mouse button on the icon  and select *Unplug or eject hardware*. Select the drive corresponding to your Lyra player.



The *Stop a Hardware device* screen appears. Select the device to be stopped again for confirmation and click *OK*.

You can also stop your Lyra Jukebox by right clicking on the  icon from the system tray and selecting the drive corresponding to your player.


System Tray Applications

Profile

New files that are transferred to your Lyra Jukebox using Windows Explorer (drag and drop) will not appear in the Navigation Menus until you profile the contents. If MusicMatch Jukebox was used to transfer files, profiling will be done automatically.

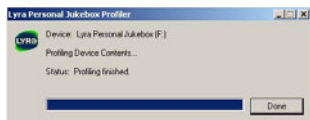
1. Connect your Lyra Jukebox to the computer using the provided USB cable if it is not already connected and turn the unit on.




2. Right click on the Lyra icon  in the System tray (bottom right hand corner of the computer screen).
3. Select the *Profile Device Content...* item to start the profiling and sorting contents.



4. Click *Done* when profiling is complete.



Caution: Make sure all data are transferred to the Lyra Jukebox before unplugging the USB cable.

If you're running Windows 2000 you must stop the device before unplugging it. Click the  icon (the Unplug or Eject hardware icon) from the system tray and select the USB Mass Storage device for the drive letter associated with the Lyra Jukebox, and select the device you want to stop. See the Windows Help for details about the Unplug or Eject Hardware topic.


Note: The Lyra Jukebox can also perform profiling. Refer to page 44 for details.

Updating System File

You can upgrade your Lyra Jukebox or repair damaged system files on your device by downloading the latest firmware from <http://www.rca.com/digitalaudidownloads>. After you have downloaded the latest firmware, follow the steps below to update your system files.

1. Connect your Lyra Jukebox to the computer using the provided USB cable if it is not already connected and turn the unit on.



2. Right click on the Lyra icon  in the System tray (bottom right hand corner of the computer screen) and select the *Update System File...* item to start updating your system with the latest firmware.

Possible cause of system file damage:


- System files and/or folders were accidentally deleted from the device,
- You have formatted your Jukebox.

Verify User Playlists

Verify items in the User Playlists under the *lyra_playlist* system folder exists on the Lyra Jukebox.

1. Connect your Lyra Jukebox to the computer using the provided USB cable if it is not already connected and turn the unit on.



2. Right click on the Lyra icon  in the System tray (bottom right hand corner of the computer screen) and select the *Verify User Playlists...* item.


Getting Started: Software Setup

LyraSync

Files and folders can be synchronized between your PC and your Lyra Jukebox.

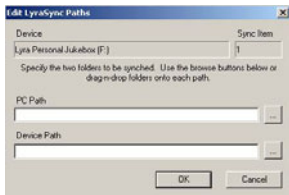
1. Connect your Lyra Jukebox to the computer using the provided USB cable if it is not already connected and turn the unit on.



2. Right click on the Lyra icon  in the System tray (bottom right hand corner of the computer screen) and select *LyraSync*.



3. The *LyraSync Options* screen appears.



4. Click *Insert* to select the paths of files and folders to synchronize between your PC and the Device. Click *OK*.

5. Select the desired LyraSync direction.

- PC overwrites Device
- Device overwrites PC
- Synchronize PC and Device


6. Click *Synchronize* to start.

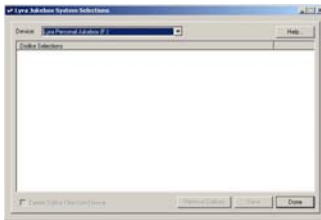
MyDislikes

Items in the *MyDislikes* playlist can be viewed and deleted in *MyDislikes*.

1. Connect your Lyra Jukebox to the computer using the provided USB cable if it is not already connected and turn the unit on.



2. Right click on the Lyra icon  in the System tray (bottom right hand corner of the computer screen) and select *MyDislikes...*

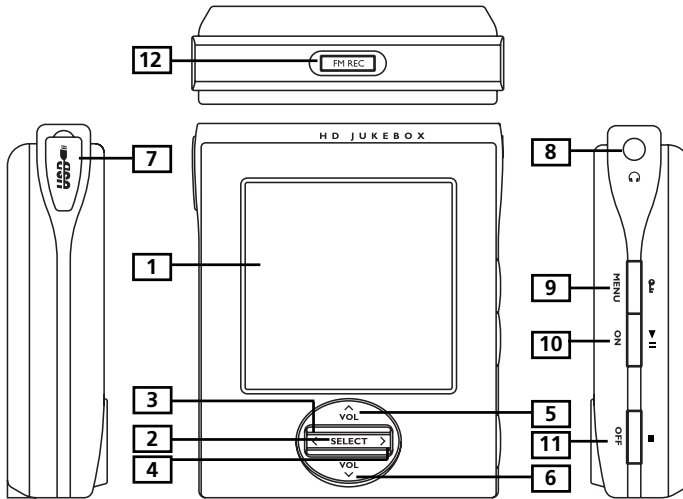


3. Files tagged as dislike on the unit will show on the *Lyra Jukebox MyDislikes* screen. Highlight files to remove from the *MyDislikes* playlist and click *Remove Dislikes*.

Note: Files will be removed from your Lyra Jukebox, playlist and MyDislikes playlist permanently.

4. Press *Done* to close the *MyDislikes* screen.

Overview of General Controls



Front View

1. **LCD (Liquid Crystal Display)** - This is where the Lyra's user interface appears (go to page 30 for an explanation of the items that appear on the LCD during playback).

Navigation Controls

2. **SELECT** - Selects a highlighted item in navigation mode.
During music menu navigation, press SELECT to tag any item to be included in the *MySelections* playlist. These items can be individual songs, or a group of songs under an artist, album, etc. Press SELECT on a tagged item to remove it from *MySelections* playlist.
During music playback, press SELECT to add the current song to the *MySelections* or *MyDislikes* playlist.
In radio mode - Saves the current radio station as a preset station.
3. **Up (^)** - Scrolls up Lyra Jukebox menu and moves the highlight up.
During music and radio playback - Increases volume level.
4. **Down (v)** - Scrolls down Lyra Jukebox menu and moves the highlight down.
During music and radio playback - Decreases volume level.

continued on next page

5. **Enter / Next (>)** - Enters the highlighted item.
 - Views the content of the highlighted item.
 - Shows info screen during menu navigation when the item selected is a song.In music mode - press and release to skip forward to the next song. To scan forward in the current song, press and hold.
During preset tuning in radio mode - Selects the next preset station.
During manual tuning in radio mode - Tunes up radio frequency.
6. **Back / Previous (<)** - Returns to the previous menu.
 - In music mode - Press and release to skip back to the beginning of the song or the previous song. To scan backwards in the song that's playing, press and hold.
 - During preset tuning in radio mode - Selects the previous preset station.
 - During manual tuning in radio mode - Tunes down radio frequency.

Left View

7. **USB port** - Attach the small end (Type mini-B) of the mini-USB cable here. Attach the large end (Type A) to your computer. The Lyra Jukebox will also get power from the USB port when connected.
Plug in the AC power adapter here. When you plug in the AC adapter, the battery inside the Lyra Jukebox automatically starts charging.

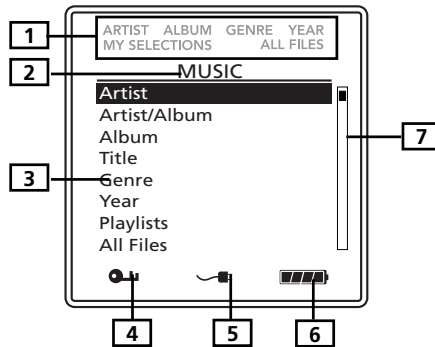
Right View



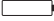
8. **Headphones jack (🎧)** - Insert the headphones plug here.
9. **ON / Play / Pause (▶ ||)** - When the power is off, press to turn on the unit. When the unit is on in music mode, press to play or pause music. In radio mode, press to select between tune and preset mode. Press and hold to switch between music and radio mode.
10. **OFF / Stop (■) / Reset** - When the unit is in stop mode, press to turn the power off. When music is playing, press to stop playback. During radio recording, press to stop recording. When the unit does not respond, press and hold for more than 10 seconds to reset the unit.
11. **MENU / Lock (🔒)** - Accesses the Menu.
 - Press and hold to activate and deactivate key lock.

Top View

12. **FM REC** - Starts or pauses radio recording.

Display Overview



1. The relative icon lights to show the sorting method of the current folder.
2. The menu level you are currently at.
3. The items in the current menu level.
4. The lock icon is displayed when the key lock function is activated. This can be activated by pressing and holding the **MENU/**  **Lock** button until the lock icon is displayed. To unlock, press and hold again until the lock icon is turned off.
5. Charger is connected.
6. The battery indicator shows battery level.
 - Battery full
 - Battery empty
7. The current position you are at among all other items in the current menu level.

Basic Operation

The information in this section presumes you've successfully transferred files to your Lyra Jukebox, and you're ready to play some music.

If you need specific set-up information (downloading music, transferring files, installing software), go to "Getting Started: Software Setup" on page 13-25.

If you want more detailed information about the Lyra Jukebox's features, go to page 26.

Understanding how to navigate through the Lyra Jukebox's menu system, combine with how the buttons operate, will give you information you need for basic functionality.

Menu Navigation

1. To scroll up and down and highlight items on screen, press the **Up (^)** or **Down (v)** arrow.
2. To enter and view the submenu, press the **Enter / Next (>)** arrow button.
3. To go back to the previous menu level, press the **Back / Previous (<)** arrow button.
4. To view the menu at any given time, press the **MENU** button.

Music Menu

MENU	
▶ Go to Radio	
Repeat	Off
Shuffle	Off
DSP	Flat
Profile Content	
Settings	
System Info	

Radio Menu

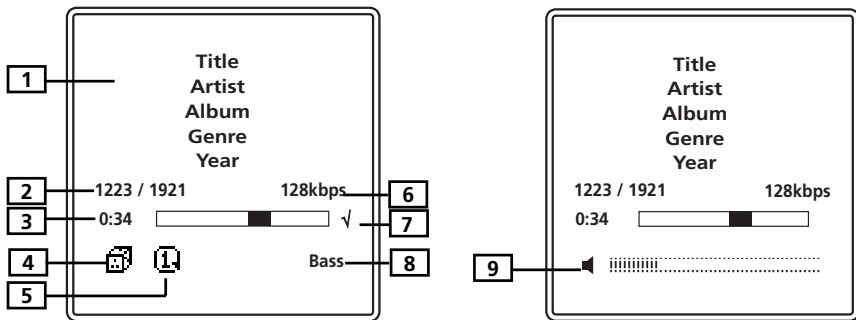
MENU	
▶ Go to Music	
Clear Preset	
Mode	Stereo
RecDur	30min
RecQua	High
Settings	
System Info	

Selecting Music Mode

MENU	
▶ Go to Music	
Clear Preset	
Mode	Stereo
RecDur	30min
RecQua	High
Settings	
System Info	

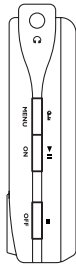
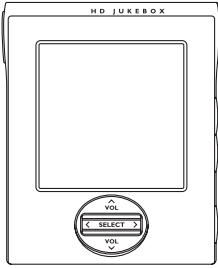
1. If the unit is in radio mode, press the **MENU** / **Lock** (🔒) button to view the Radio menu.
2. Use the **Up** (^) or **Down** (v) arrows to select *Go to Music* and press **SELECT** for music mode.

Music Playback Display



1. Displays song information.
2. The current song number out of the total number of songs on the unit.
3. Song elapse time.
4. Random icon.
5. The repeat icon is displayed when the repeat feature is activated.
 - 1 - Indicates repeat one song
 - 2 - Indicates repeat all songs in the current play mode.
6. Shows mp3 Bitrate and song format (mp3 / mp3PRO / wma).
7. √ - Indicates the song is included in the *MySelections* playlist.
x - Indicates the song is included in the *MyDislikes* playlist.
8. Current DSP selection (Flat / Bass / Rock / Pop / Jazz / Graphic EQ).
9. The volume bar shows on the display for a few seconds when the volume is adjusted.

Music Playback Operation



- Once the item that you want to play is on the screen, press **Play / Pause (▶||)** to begin playback. This item can be an artist, an album, a playlist, or a song. Press again to pause playback. The unit will automatically power off after remaining in pause mode for more than the Power Save interval (length of this Power Save interval can be modified in the *Setting* menu).
- To scan backwards in the track that's playing, press and hold the **Back / Previous (◀)** button.
- To scan forward in the track that is playing, press and hold the **Enter / Next (▶)** button.
- To go to the next track, press and release the **Enter / Next (▶)** button.
- To go to the previous track, press and release the **Back / Previous (◀)** button.
- To stop playback, press the **Stop (■)** button on the side of the unit. The display returns to the previous menu level.
- To turn up the volume, press **VOL (▲)**. The volume bar updates to show the increase in volume level.
- To turn down the volume, press **VOL (▼)**. The volume bar updates to show the decrease in volume level.
- To add an item to *MySelections* list, press **SELECT** to tag it (in navigation mode or during playback). You can add an album, an artist, or individual songs. Songs saved in this list can be played and viewed through the *Playlists* menu.
- To add a song to the *MyDislikes* list, press the **SELECT** button to tag the song. (only active during playback).
- To access the song information screen, press **Enter / Next (▶)** in navigation mode.


Step-by-Step Example

The following example illustrates (with more detail than the previous information) how you find the song you want to play.

1. These instructions presume you've already done the following:
 - Installed the MusicMatch Jukebox software and the Lyra Jukebox profiler application (go to page 16 for detailed instructions).
 - Transferred music from your computer to the Lyra Jukebox (page 18 has detailed instructions) and profiled the contents of the Lyra Jukebox through MusicMatch Jukebox or the Profiler software.

Note: *The music you're transferring could be from a CD you put in your computer, the internet, or music you already had loaded onto your computer.*

2. If you haven't already unplugged the Lyra Jukebox from your computer, disconnect the USB cable from the Lyra Jukebox.

Note: *If you're running Windows 2000, you must stop the device before unplugging it. Click the  icon (the Unplug or Eject hardware icon) from the system tray and select the USB Mass Storage device for the drive letter associated with the Lyra Jukebox, and click STOP. See the Windows Help for details about the Unplug or Eject Hardware topic.*

3. If you've fully charged the battery (the Lyra Jukebox needs to be plugged in for about 4 hours before the battery is fully charged), the display shows "Batteries fully charged.". Disconnect the AC adapter from the outlet and then from your Lyra Jukebox.

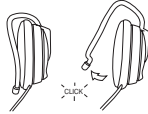
Note: *If the battery isn't fully charged, keep the Lyra Jukebox plugged in while you listen to the music you've transferred from your computer.*

4. Connect the clip phones to your Lyra Jukebox (insert the end of the clip phones connector into the phones jack on the side of the Lyra).

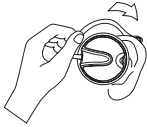
How to Use Your Clip Phones (The e.clipz)



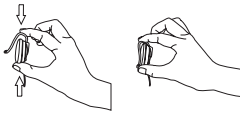
The right ear clip phone is labeled R while the left ear clip phone is labeled L.



- a. Pull the ear hook away from the ear pad slightly. You will hear a click sound.



- b. Slide the ear hook behind the ear with the ear pad on the front of the ear. Rotate the clip phone so the ear pad fits closely with the ear.



- c. Lock the clip phone in place by pushing down on the top of the ear hook until it locks.

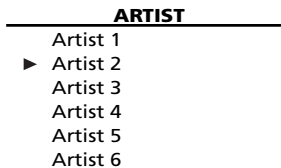


- d. For best sound quality, make sure the earpad fits closely with your ear.

5. If your Lyra Jukebox isn't already on, turn it on (press the **ON / Play / Pause (▶ ||)** button). The RCA Lyra logo flashes on the screen, and then the main *Menu* appears.

Navigation Menu

The following example illustrates steps to select and play songs in the *Artist* category.




1. Highlight *Artist* (use the **Up** (^) or **Down** (v) arrow button).
2. Press the **Enter / Next** (>) button (the *Artist* menu appears with the artists stored on your Lyra Jukebox listed in alphabetical order).
 - To scroll up and down the *Artist* menu, press the **Up** (^) or **Down** (v) arrow button.
 - To return to the main *Music* menu, press the **Back / Previous** (<) arrow button.
3. To view the songs for the artist highlighted, press **Enter / Next** (>) (the songs for that artist appear in alphabetical order).
 - To scroll up and down and view the list of songs for the selected artist, press the **Up** (^) or **Down** (v) arrow button.
 - To return to the previous menu (*Artist*), press the **Back / Previous** (<) arrow button.

Note: To show the Music Menu at any stage of navigation, press **MENU**.

Title 1
Artist 1
Album 1
Genre
Year

1/100 128kbps

0:10 

Highlight the desired song.

- To play the song, press the **Play / Pause** (**▶||**) button.

- To end playback, press the **Stop** (**■**) button.

SONG INFO

Artist: Artist 3
Album: Album 1
Title: Title 4
Genre: Pop
Year: 2002
File: \Music\Title 4.mp3

- To get more info about the song, highlight the desired song in navigation mode and press the **Enter / Next** (**>**) arrow button .

***Note:** The information provided in the INFO screen depends upon the ID3 tags that have been set up for the song.*

- To go to the previous menu, press the **Back / Previous** (**<**) arrow button.

Playlists

Lyra Jukebox has 2 System Playlist selections: *MySelections* and *MyDislikes*.

My Selections

You can create a *MySelections* temporary playlist using the Lyra Jukebox.

- ▶ - The song is included in *MySelections*.
- ▶ - If the item is a folder, all the songs in the folder is included in *MySelections*.
- ▷ - If the item is a folder, some of the songs in the folder is included in *MySelections*.

ALBUM 1

Song 1
▶ Song 2
Song 3
Song 4
Song 5
Song 6

1. In navigation mode, move the cursor to highlight the item to be selected.
 - To scroll up and down the display, press the **Up (^)** or **Down (v)** button.
 - To enter the highlighted folder, press the **Enter / Next (>)** button.
 - To go back to the previous folder, press the **Back / Previous (<)** button.
 - To view music sub-menu, press the **MENU** button.

ALBUM

Album 1
▶ Album 2
Album 3
Album 4

2. If the item is an item (artist, album, etc.), press **SELECT** to tag all the songs belonging to the selected item and place them into the *MySelections* playlist.

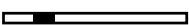
If the item is a song, press **SELECT** to tag the song and place it into the *MySelections* playlist.

The relative icon (▶ or ▷) will show beside any folder or song that has been tagged.

During playback, a √ icon is displayed to show the song is included in *MySelections* playlist.

Title 1
Artist 1
Album 2
Genre
Year

11/100 128kbps

0:10  √

ALBUM 1

- Song 1
- ▶ Song 2
- Song 3
- Song 4
- Song 5
- Song 6

3. To de-select a selected item, use the navigation buttons to highlight the selected item and press **SELECT**.

Refer to “View User Playlist” on page 38 to view items in the MySelections playlist.

To clear MySelections playlist, refer to “Clear Playlists” on page 40.

Note: *MySelections is not active in All Files mode.*

My Dislikes

In playback mode, you can tag songs you don't like and place them into the *MyDislikes* playlist.

SELECT A SONG

- MySelections
- ▶ MyDislikes

1. When a song is playing, press the **SELECT** button.
2. Press **Up (^)** or **Down (v)** to select *MyDislikes*.

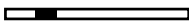
Press **SELECT** to tag the song and add it to the *MyDislikes* playlist.

The x icon will show on the bottom right corner of the display to show the song has been tagged as a “dislike” song.

2. To de-select a song from the *MyDislikes* playlist, press the **SELECT** button again while the song is playing.

Title
Artist
Album
Genre
Year

1/100 128kpbs

0:55  x

Note: *To clear the MyDislikes playlist, refer to “Clear Playlist” on page 40.*

Note: *You can also view the MyDislikes playlist on your computer where songs that have been marked can be viewed or deleted. (Refer to System Tray Applications on page 22)*

View User Playlists

MUSIC

- Artist
- Artist/Album
- Album
- Title
- Genre
- Year
- ▶ Playlists
- All Files
- Radio Recordings

1. Use the **Up** (^) or **Down** (v) button to scroll and highlight *Playlists* from the *Music* menu.

2. Press **Enter** / **Next** (>) to show pre-defined and system playlists.

PLAYLISTS

- ▶ MySelections
- MyDislikes
- Playlist1
- Playlist2
- Playlist3

3. Scroll up and down the *Playlists* menu to select the desired playlist to be viewed using the **Up** (^) or **Down** (v) button.

MYSELECTIONS

- Song 1
- ▶ Song 2
- Song 3
- Song 4

4. Press **Enter** / **Next** (>) to view tagged items in the selected playlist.

Pre-defined Playlists

Pre-defined playlists are those playlists created on the PC and transferred to the Lyra Jukebox. Refer to page 20 for details on creating Pre-defined Playlists and transferring them to your Lyra Jukebox.

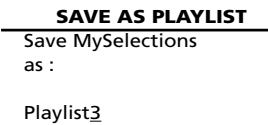
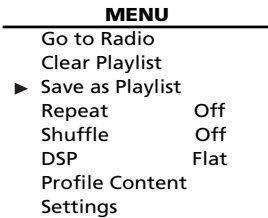


Follow the steps under “View System Playlists” to enter the *Playlists* menu.

All playlists except for *MySelections* and *MyDislikes* playlists are pre-defined playlists

Note: Pre-define Playlists can not be edited on the device.

Save MySelections or MyDislikes as a Playlist



1. Press **MENU** when the cursor is pointing to *MySelections* or *MyDislikes*.
2. Press **Up** (^) or **Down** (v) to select *Save as Playlist* and press **SELECT**.
3. Name the playlist using the arrow buttons. Press **Enter** / **Next** (>) to move the cursor to the right. Press **Back** / **Previous** (<) to move the cursor to the left. Press **Up** (^) or **Down** (v) to select a number or a letter.
4. Press **SELECT** to save.

Clear Playlists

PLAYLISTS

- ▶ MySelections
- MyDislikes
- Playlist1
- Playlist2
- Playlist3

MENU

- Go to Radio
- ▶ Clear Playlist
- Save as Playlist
- Repeat Off
- Shuffle Off
- DSP Flat
- Profile Content
- Settings

1. Press **MENU** when the cursor is pointing to the system playlist to be cleared (*MySelections* or *MyDislikes*).
2. Press **Up (^)** or **Down (v)** to select *Clear Playlist* and press **SELECT**.

All Files

Your Lyra Jukebox is a USB mass storage device that can be used to store any files. To see all of the files that are stored on your Lyra Jukebox:

MUSIC

- Artist/Album
- Album
- Title
- Genre
- Year
- Playlists
- ▶ All Files
- Radio Recordings

All Files

- ▶ Folder 1
- Folder 2
- Folder 3
- Song 1
- Song 2

1. Highlight *All Files* (press the **Up (^)** or **Down (v)** arrow button) from the *Music* menu.
2. Press **Enter / Next (>)** (the *All Files* menu appears). Folders are listed first and individual files are listed next.

Note: The folders and files are sorted in the order they were transferred to the Lyra Jukebox (the folder you transferred most recently appears last in the list of folders and the file you transferred most recently would be the last on the list since file names follow folder names).



Additional Features

MENU	
▶ Go to Radio	
Clear Playlist	
Save as Playlist	
Repeat	One
Shuffle	Off
DSP	Flat
Profile Contents	
Settings	
System Info	

Press **MENU** to access music sub-menu.

Repeat

Three repeat options are available on the Lyra Jukebox.

- *Repeat Off* - No repeat option selected.
- *Repeat One* - Plays the current song repeatedly. The repeat one icon  will show on the display.
- *Repeat All* - Plays all songs in the current view repeatedly. The repeat all icon  will show on the display.

MENU	
Go to Radio	
Clear Playlist	
Save as Playlist	
▶ Repeat	One
Shuffle	Off
DSP	Flat
Profile Contents	
Settings	
System Info	

1. From the music sub-menu, highlight Repeat. (Press the **Up** (^) or **Down** (v) button).
2. Press **SELECT** to toggle and select repeat options.

The corresponding repeat icon appears on the display.
3. Press the **Back / Previous** (<) button or the **MENU / Lock** (🔒) button to return to the main Menu.
4. Select the item you wish to play and press the **Play / Pause** (▶ ||).

If Repeat All is activated, the songs in the folder where playback begins will be repeated

If Repeat One is activated, the selected song where playback begins will be repeated.

5. To de-select the repeat option, repeat steps 1 and 2 and select *Repeat Off*.

Shuffle


When Shuffle is On, songs are played in random order.

If shuffle is activated, the songs in the view where playback begins are played randomly. After all the songs have been played, the unit will randomly select another folder and shuffle all the songs in the newly selected folder.

MENU	
Go to Radio	
Clear Playlist	
Save as Playlist	
Repeat	One
▶ Shuffle	Off
DSP	Flat
Profile Contents	
Settings	
System Info	

1. From the music sub-menu, highlight *Shuffle* (Press the **Up** (\wedge) or **Down** (\vee) button).

2. Press the **SELECT** button repeatedly to toggle between Shuffle on and off.

The Shuffle  icon will show on the display when shuffle is on.

3. Use the **Back / Previous** (\leftarrow) button or the **MENU / Lock** (\bullet) button to return to the main menu.

4. Use the Navigation buttons to select the folder where you want shuffle playback to begin.

Press **Play / Pause** ($\blacktriangleright \parallel$) to begin playback.

All songs/folders in the folder where playback begins will be played randomly.

5. To de-select the shuffle option, repeat steps 1 and 2 to select *Shuffle Off*.

Adjusting DSP Settings

DSP Settings (Digital Signal Processor settings) adjust the various levels of the audio output for different types of songs. For example, the DSP setting for BASS makes the bass sounds more prominent. You can also personalize the levels via the *Graphic EQ* menu item. The default DSP setting for your Lyra Jukebox is *FLAT*.

MENU	
Go to Radio	
Clear Playlist	
Save as Playlist	
Repeat	One
Shuffle	Off
▶ DSP	Flat
Profile Contents	
Settings	
System Info	

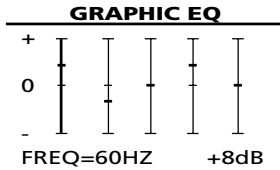
1. From the music sub-menu, select *DSP* using the **Up (^)** or **Down (v)** button.
2. Press **SELECT** to toggle and select the DSP setting you want to use.
 - FLAT
 - BASS
 - ROCK
 - POP
 - JAZZ
 - Graphic EQ

Personalizing DSP Output (Graphic EQ menu item)

Graphic EQ: enables you to personalize audio output settings.


DSP
Flat
Bass
Rock
Pop
Jazz
▶ Graphic EQ

1. From the music sub-menu, select *DSP* using the **Up (^)** or **Down (v)** button.
2. Press **Enter / NEXT (>)** to show a list of DSP options.
3. Select *Graphic EQ* using the **Up (^)** or **Down (v)** button.



4. Press **Enter / Next (>)** to show the *Graphic EQ* display.
5. Press **Enter / Next (>)** to move among frequency adjustments (60Hz, 250Hz, 1kHz, 4kHz and 12 kHz).

Press the **Up (^)** or **Down (v)** button to adjust levels between +15 and -15.

6. Press the **Back / Previous (<)** button to return to the previous menu or the **MENU / Lock ()** button to return to the main *Music* menu.

Profiler

The application will profile and sort supported audio files on your Lyra Jukebox so you can sort and play them properly.

Note: *It is best to profile your contents on your PC after each transfer of music files. Profiling on the unit will take longer and may use up battery power.*

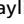
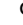

Note: *Approximately 3500 songs can be profiled on the Lyra Jukebox. If the number of audio files exceed this limit, use your PC for profiling (Refer to page 22).*

MENU	
Go to Radio	
Clear Playlist	
Save as Playlist	
Repeat	One
Shuffle	Off
DSP	Flat
▶ Profile Contents	
Settings	
System Info	


1. Highlight *Profile Contents* from the music sub-menu. (Use the **Up (^)** or **Down (v)** button).
2. Press **SELECT** to start profiling contents on the Lyra Jukebox or press **Back / Previous (<)** to cancel and return to the previous menu level.

Selecting Radio Mode

MENU	
▶ Go to Radio	
Clear Playlist	
Save as Playlist	
Repeat	Off
Shuffle	Off
DSP	Flat
Profile Contents	
Settings	
System Info	



1. If the unit is in music mode, press the **MENU / Lock ()** button to view the music sub-menu.
2. Use the **Up ()** or **Down ()** button to select *Go to Radio* and press **SELECT** for radio mode.

Preset Station

Press the **PLAY / PAUSE ()** button to select between Preset mode and Tune mode.

Tuning to a Station

RADIO	
FM 106.1 MHz	
Manual	Stereo

- Press the **Back / Previous ()** arrow button to tune down radio frequency.
- Press the **Enter / Next ()** arrow button to tune up radio frequency.

Setting Preset

RADIO

FM 106.1 MHz

Manual Stereo

SAVE AS PRESET

Save FM 106.1 MHz as

Preset: 1

Name:

SAVE AS PRESET

Save FM 106.1 MHz as

Preset: 1

Name:

SAVE AS PRESET

Save FM 106.1 MHz as

Preset: 1

Name: KMEL Hip-Hop

RADIO

FM 106.1 MHz

Preset 1

KMEL Hip-Hop

Preset Stereo

1. Tune to the station to be saved as a preset station.

2. Press **SELECT**.

3. Press the **Up (^)** or **Down (v)** arrow button to select a preset location

4. Press **SELECT**.

5. Create a name for the preset location using the **Up (^)** or **Down (v)** arrow button to select an alphabet or number.

Press **Back / Previous (<)** to move the cursor to the left.

Press **Enter / Next (>)** to move the cursor to the right.

6. Press **SELECT** to confirm your selection.

Selecting Preset Station

In preset mode, press **Back / Previous (<)** to select the previous preset station and press **Enter / Next (>)** to select the next preset station.

Clearing Preset

MENU	
Go to Music	
▶ Clear Preset	
Mode	Stereo
RecDur	30min
RecQua	High
Settings	
System Info	

CLEAR PRESET	
Clear preset 5?	

Change Preset: ▲ / ▼
 Confirm: SELECT
 Cancel: ◀

1. In radio mode, press **MENU/ Lock (🔒)** to view radio sub-menu.
2. Use the **Up (^)** or **Down (v)** arrow button to select *Clear Preset*.
3. Press the **Enter / Next (>)** button or the **SELECT** button.
4. Press the **Up (^)** or **Down (v)** arrow buttons to select the preset location to clear.
5. Press **SELECT** to confirm.

Press **Back / Previous (<)** to cancel out of the Clear Preset screen and return to the Radio screen.

Suppressing Stereo Signal

MENU	
Go to Music	
Clear Preset	
▶ Mode	Stereo
RecDur	30min
RecQua	High
Settings	
System Info	

1. From the radio submenu, use the **Up (^)** or **Down (v)** arrow buttons to select *Mode*.
2. Press **SELECT** to select between Stereo and Mono sound.

Record FM Radio

RADIO
FM 106.1 MHz
Preset 1
KMEL Hip-Hop
Preset Stereo

1. Tune to the Station to be recorded by following steps under “Tune to a Station” or “Selecting Preset Station”.

RECORD RADIO
Recording...
00:55:34 / 01:00:00
FM 106.1MHz

2. Press **FM REC** to start recording.

RECORD RADIO
Paused...
00:55:34 / 01:00:00
FM 106.1MHz

Press **FM REC** to pause recording. Press again to resume.

RECORD RADIO
Save recording as:
FM106.1 [001].mp3

3. Press **OFF / STOP (■)** to stop recording.

Selecting Recording Duration

MENU	
Go to Music	
Clear Preset	
Mode	Stereo
▶ RecDur	30min
RecQua	High
Settings	
System Info	

1. From the radio sub-menu, use the **Up (^)** or **Down (v)** arrow button to select *RecDur*.
2. Press the **SELECT** button to select among 30min, 60min, 90min, 120min and Max.

Selecting Recording Quality

MENU	
Go to Music	
Clear Preset	
Mode	Stereo
RecDur	30min
▶ RecQua	High
Settings	
System Info	

1. From the radio sub-menu, press the **Up (^)** or **Down (v)** arrow button to select *RecQua*.
2. Press the **SELECT** button to select between Standard (48k), High (96k) and Max (128k).

View FM Recording

MUSIC	
Artist	
Artist/Album	
Album	
Title	
Genre	
Year	
Playlists	
All Files	
▶ Radio Recordings	

1. From the main Music menu, use the **Up (^)** or **Down (v)** arrow button to select *Radio Recordings*.

RADIO RECS	
▶ ♪ FM87.5 [001]	
♪ FM106.1 [001]	
♪ FM106.1 [002]	
♪ FM102.5 [001]	
♪ FM106.1 [003]	

2. Press the **Enter / Next (>)** arrow button to view the list of radio recordings in the order they were recorded.

System Settings

You can personalize the display settings for your Lyra Jukebox.

1. Press **MENU** to view music or radio sub-menus.

Music Menu

MENU	
Go to Radio	
Repeat	Off
Shuffle	Off
DSP	Flat
Profile Contents	
▶ Settings	
System Info	

Radio Menu

MENU	
Go to Music	
Clear Preset	
Mode	Stereo
RecDur	30min
RecQua	High
▶ Settings	
System Info	

SETTINGS	
▶ Customize Menu	
Contrast	0
Backlight	5sec
PowerSave	1 min
AutoResume	Off

2. From the sub-menu, use the **Up (^)** or **Down (v)** arrow button to select *Settings*.
3. Press the **SELECT** button to show setting options.
4. Highlight the display setting (*Customize Menu, Contrast, Backlight, PowerSave* or *AutoResume*) you want to adjust using the **Up (^)** or **Down (v)** arrow button.
5. Press **SELECT** repeatedly to select among options in the following settings.
Contrast (between -5 to +5)
Backlight (Off, 5 sec, 10 sec or 30 sec)
PowerSave (30 sec, 1 min, 2 min or 3 min)
AutoResume (Off, On)
6. Press the **Back / Previous (<)** button to return to the previous menu or the **MENU** button to return to the sub-menu.

Customize Music Menu

You can set the music menu on the Lyra Jukebox to show and hide certain menu items.

MENU	
Go to Radio	
Repeat	Off
Shuffle	Off
DSP	Flat
Profile Contents	
▶ Settings	
System Info	

SETTINGS	
▶ Customize Menu	
Contrast	0
Backlight	Off
PowerSave	1min
AutoResume	Off

MENU	
Artist	On
Artist/Album	On
▶ Album	Off
Title	On
Genre	On
Year	On

MUSIC	
▶ Artist	
Artist/Album	
Title	
Genre	
Year	
Playlists	
All Files	
Radio Recordings	

1. From the Settings menu, select *Customize Menu*. (Press the **Up** (^) or **Down** (v) button).

2. Press **Enter** / **Next** (>) to view *Customize Menu* options.

3. Use the **Up** (^) or **Down** (v) button to select the music menu item to hide or show.

Press **SELECT** to toggle between On and OFF.

Select On to show the item on the music menu. Select Off to hide the item from the music menu.

4. Press the **Back** / **Previous** (<) button to return to the previous menu or the **MENU** button to return to the sub-menu.

Those items that are set to Off will not show on the music menu.

System Info

System Information shows Lyra Jukebox system details which includes the number of songs you have on your Jukebox, the amount of free space available and your firmware version.

SYSTEM INFO

No of Song : 4627
Free Space : 1630.54M
Used Space 2370.46M
▶ Firmware Info

FIRMWARE INFO

1. For Lyra Jukebox information, select *System Info* in the music or radio sub-menu using the **Up** (^) or **Down** (v) button.
2. Press **Enter / Next** (>) to show hardware information.
3. To see firmware information, select *Firmware Info* and press **Enter / Next** (>).
4. Press the **Back / Previous** (<) button or the **MENU** button to return to the sub-menu.

Connecting your Lyra Jukebox to your Car Stereo

The cassette adapter lets you listen to the Lyra in an automobile or RV safely without having to wear headphones.

The car kit is included with your Lyra Jukebox. This accessory kit includes a car cord adapter and a cassette adapter. The car cord adapter lets you power your Lyra from the cigarette lighter socket of a car, truck, or RV. It converts 12-volts to a 5 volt output.

1. Insert the plug on the cassette adapter into the headphones jack on the player. If the headphones are attached, remove them.
2. Insert the cassette (Side A up) into your cassette player making sure the cord is placed in the correct position for your type of player.
3. Remove the cigarette lighter from the socket, and insert the car cord adaptor into the socket.
4. Attach the end of the car cord adapter to the DC IN jack on your Lyra Jukebox (the POWER light comes on).
5. Turn on your Lyra Jukebox, and operate the Lyra Jukebox to play music as described on page 31.
6. Control the volume with the car cassette player.
7. When you're finished,
 - A. Remove the cassette adapter from the car cassette player.
 - B. Turn off the Lyra Jukebox.
 - C. Remove the car cord's plug from the cigarette lighter socket.

Cautions: Make sure to place the cassette securely into the slot with the correct direction for the type of player you have. The car cord adapter is designed to be used only with vehicles having negative ground electrical systems. Use of any other car cord adapter may damage your Lyra Jukebox and void your warranty.

Connecting Your Lyra Jukebox on your stereo system

Your Lyra Jukebox came with a Line Out Cable that you can use to connect your Lyra to your audio system.

1. Make sure your Lyra Jukebox is off.
2. Connect the black end of the cable to the Headphones jack on your Lyra Jukebox player.
3. Connect the red (audio left) and white (audio right) cables to the corresponding left and right audio jacks on your stereo system.
4. Turn on the power to your audio system, and select the proper input setting on the audio system that corresponds with the way you've connected the Lyra Jukebox to the audio system.
5. Turn on your Lyra Jukebox – press the **ON / Play / Pause (▶ ||)** button.
6. Operate the Lyra Jukebox to play music as described on page 31.

Portable Hard Drive Capability

Since Lyra Jukebox has a 20-gigabyte (RD2850) or 40-gigabyte (RD2854) hard drive, you can use it to transport files - any files, not just music files. Some possible uses for this feature are as follows:

- Create back-ups/archive files.
- Connect to other computers - at work, for example.
- Transport digital photo albums.
- Transport files from one computer to another computer. For example, instead of putting files at work on a zip or accessing them on your home computer via e-mail or remote access, you can put the files on your Lyra Jukebox.
- Capture internet downloads.
- Share information.

Check for Updates

Visit <http://www.rca.com/digitalaudidownloads> for the latest news and firmware upgrades for our Lyra Jukebox. You must update your system after new downloads have been made in order for the new applications to be executed (Refer to page 23).

Additional Information

Tips and Troubleshooting

Problem: Player repeats same tracks or all tracks.

- Repeat play is turned on. Press the MENU button to change the play mode.

Problem: Audio distorted at high volume.

- Select another DSP setting.
- Turn down the volume.


Problem: The audio tracks on my Lyra keep skipping or popping.

- You'll need to re-record the audio track – make sure you close all other applications on your PC when you record.
- Try recording with Error Correction setting turned on.

Problem: Player turns itself off.

- Your Lyra Jukebox turns itself off if you leave it in pause mode or navigation mode for the duration specified in PowerSave.

Problem: Songs aren't listed in any of the sort modes (Artist, Album, etc.)

- The contents of the Lyra Jukebox haven't been profiled (sorted) since the last file transfer. Select the *Profile Device Contents...* menu item from the Lyra Jukebox profiler system tray application on your PC to profile (sort) the contents of the device. The icon in the system tray looks like this .

Problem: Bad or missing file error message displayed on the Lyra Jukebox.

- The Lyra Jukebox system files are corrupted or missing. Select the *Update System Files...* menu item from the Lyra Jukebox profiler system tray application on your PC to update the necessary system files.

Problem: Lyra Jukebox Profiler application icon – – doesn't appear in the system tray.

- You can restart Windows to auto-launch the application, or you can double-click or run the Lyra Jukebox Profiler executable file that's in the Profiler sub-folder of the installation directory that was specified during the setup process –
(Example Directory:

C:\Program Files\Thomson\Lyra Jukebox\LyraHDTrayApp\LYRAHD2TrayApp.exe)

If the problem persists, you might need to reinstall the Lyra Jukebox software.

Problem: Lyra Jukebox does not respond.

- Press and hold the OFF button for more than 10 seconds to reset the unit.

FAQ (Frequently Asked Questions)

Question: What is mp3?

mp3 is an abbreviation for MPEG-1, Layer 3 Audio (MPEG = Motion Picture Experts Group). This is a digital sound encoding and compression process that was developed by the Fraunhofer Institut für Integrierte Schaltungen and Thomson. mp3 is an international standard and is well suited for the transfer of high quality audio files over telephone or ISDN lines, and over the internet.

Specifications & System Requirements

Hardware

- Dimensions: 0.9" D, 2.8" W, 3.25" H
- Unit Weight: 11.0 Ounces
- RD2850 - 20 Giga Byte Storage
RD2854 - 40 Giga Byte Storage
- Stereo Headphones Jack
- Mini USB Connection Jack
- Battery Operated: Up to 12 hours of playback with internal rechargeable lithium polymer battery.

Additional Information

Hard Disc

- External Hard Disc Drive: When connected to a computer via USB, the Lyra Hard Disc player is capable of storing any file type allowing the user a fast, convenient method of storing, retrieving, and transferring files. Including word processing files, presentations, spreadsheets and any other computer files.
- Capacity: RD2850 - 20 GB / RD2854 - 40 GB
- Rotational Speed: 4200 RPM
- Average Access Time: 12 MS
- Connection: USB 2.0, Hi-speed capable

Software

- Includes Music Management software with the Lyra Jukebox applications and the MusicMatch Jukebox software.

MusicMatch Jukebox software lets the user organize all tracks in a digital music library, create custom playlists through drag and drop interface.

- Encodes mp3, mp3PRO and Windows Media Audio (WMA) files.
- Integrated CD Player.
- Export to WAV
- mp3 Equalizer

PC Hardware Requirements

- Pentium III 500MHz or higher recommended
Macintosh iMac G3 or higher
- Windows @98SE, Me, 2000, or XP
Mac OS X Version 10.1.5 or higher
- Internet Explorer 4.0 or higher
- Internet access
- 100MB free hard disk space for the software
- 64MB RAM (128 MB recommended)
- CD-ROM drive capable of digital audio extraction
- USB port (2.0 recommended)
- Installed sound card
- 16- bit color video card

Accessories

- CD-ROM Music Management Software
- USB Connection Cable
- AC/DC Adapter
- Clipphone™ Stereo Headphones
- Audio Line-Out Cable
- Car DC Adapter: Supplies power to Lyra Jukebox player from car battery via cigarette lighter plug.
- Car Cassette Audio Output Adapter

Miscellaneous Specifications

- Signal to Noise Ratio (>85dB)
- THD (<0.1%)

1 MusicMatch and MusicMatch Jukebox are registered trademarks of MusicMatch Corp.

2 Warning – This product is not intended for the unauthorized recording or duplication of copyrighted material.

Limited Warranty (U.S.)

What your warranty covers:

- Defects in materials or workmanship.

For how long after your purchase:

- 90 days from date of purchase - Unit repair or exchange, which includes parts and labor.
- 91 days to 1 year from date of purchase - Unit repair or exchange, which includes parts only; you pay the labor.
- The warranty for rental units begins with the first rental or 45 days from date of shipment to the rental firm, whichever comes first.

What we will do:

- **During the initial 90 days:**

Repair or exchange the defective portion of your Hard Drive. If the unit is replaced it will be with a new or, at our option, refurbished unit.

- **After the 90 days and within one year:**

Repair or exchange the defective portion of your Hard Drive. If the unit is replaced it will be with a new or, at our option, refurbished unit.

We will charge you a flat rate to repair or replace a defective Hard Drive. This charge covers the labor cost for its repair.

How you get service:

- Contact us on the Internet at www.rca.com and have your unit's date of purchase and model/serial number ready. The model/serial number information is on your unit.
- Self diagnostic screens will allow you to troubleshoot your problem over the Internet.
- If after going through the troubleshooting screens, you determine that your player requires service, contact us at 317-415-4391. You must contact us to obtain a Service Request Number (SR) for a service repair or exchange. No returns will be accepted without the SR number.
- Proof of purchase in the form of a bill of sale or receipted invoice which is evidence that the product is within the warranty period must be presented to obtain warranty service. For rental firms, proof of first rental is also required.

- Write the SR number on the outside of the carton used to return the unit. Make sure you insure your shipment in case of damage or loss.
- Carefully pack the unit using the original box and packing material if possible. Please retain all non-defective accessories that were included with your unit such as the headphones.
- Include with the shipment:
 1. Evidence of purchase date such as a bill of sale.
 2. A brief note describing your unit's problem.
 3. Your name, address and phone number.
- After we receive your product, it will be repaired, or a new, or at our option, refurbished unit will be shipped to you.
- Please retain a copy of all items loaded into your Hard Drive. Thomson multimedia will not be responsible for your software, firmware, information, or memory data contained in, stored on, or integrated with any products returned to Thomson for repair or exchange whether in or out of warranty.

What your warranty *does not* cover:

- Acts of nature, such as but not limited to lightning damage.
- Adjustment of customer controls.
- Damage from misuse or neglect.
- A unit that has been modified or incorporated into other products or is used for institutional or other commercial purposes.
- Batteries.
- Units purchased, serviced or operated outside the U.S.A.
- Loss of customer's software, firmware, information, or memory data.
- Installation.
- Shipping damage if the unit was not packed and shipped in the manner prescribed by Thomson.

Product Registration:

- Please complete and mail the Product Registration Card packed with your Hard Drive. It will make it easier to contact you should it ever be necessary. The return of the card is not required for warranty coverage.

Additional Information

Limitation of Warranty:

- **THE WARRANTY STATED ABOVE IS THE ONLY WARRANTY APPLICABLE TO THIS PRODUCT. ALL OTHER WARRANTIES, EXPRESS OR IMPLIED (INCLUDING ALL IMPLIED WARRANTIES OF MERCHANTABILITY OR FITNESS FOR A PARTICULAR PURPOSE) ARE HEREBY DISCLAIMED. NO VERBAL OR WRITTEN INFORMATION GIVEN BY THOMSON INC., ITS AGENTS OR EMPLOYEES SHALL CREATE A WARRANTY OR IN ANY WAY INCREASE THE SCOPE OF THIS WARRANTY.**
- **REPAIR OR REPLACEMENT AS PROVIDED UNDER THIS WARRANTY IS THE EXCLUSIVE REMEDY OF THE CONSUMER. THOMSON INC. SHALL NOT BE LIABLE FOR INCIDENTAL OR CONSEQUENTIAL DAMAGES RESULTING FROM THE USE OF THIS PRODUCT OR ARISING OUT OF ANY BREACH OF ANY EXPRESS OR IMPLIED WARRANTY ON THIS PRODUCT. THIS DISCLAIMER OF WARRANTIES AND LIMITED WARRANTY ARE GOVERNED BY THE LAWS OF THE STATE OF INDIANA. EXCEPT TO THE EXTENT PROHIBITED BY APPLICABLE LAW, ANY IMPLIED WARRANTY OF MERCHANTABILITY OR FITNESS FOR A PARTICULAR PURPOSE ON THIS PRODUCT IS LIMITED TO THE APPLICABLE WARRANTY PERIOD SET FORTH ABOVE.**

How state law relates to warranty:

- Some states do not allow the exclusion nor limitation of incidental or consequential damages, or limitations on how long an implied warranty lasts, so the above limitations or exclusions may not apply to you.
- This warranty gives you specific legal rights, and you also may have other rights that vary from state to state.

If you purchased your product outside the United States:

- This warranty does not apply. See your dealer for warranty information.

Limited Warranty (Canada)

Thomson multimedia Ltd. warrants to the purchaser or gift recipient that if any manufacturing defect becomes apparent in this product within 1 year from the original date of purchase, it will be replaced free of charge, including return transportation.

This warranty does not include damage to the product resulting from accidents, misuse or leaking batteries.

Should your product not perform properly during the warranty period, either:

1. Return it to the selling dealer with proof of purchase for replacement,

OR

2. Remove the batteries (where applicable), and pack product complete with accessories in the original carton (or equivalent). Mail prepaid (with proof of purchase) and insured to:

Thomson multimedia Ltd.
6200 Edwards Blvd.,
Mississauga, Ontario L5T 2V7
Canada

The provisions of this written warranty are in addition to and not a modification of or subtraction from the statutory warranties and other rights and remedies contained in any applicable legislation, and to the extent that any such provisions purport to disclaim, exclude or limit any such statutory warranties and other rights and remedies, such provisions shall be deemed to be amended to the extent necessary to comply therewith.

If you are unable to find a qualified servicer for out of warranty service, you may write to:

Thomson Inc.

P.O. Box 0944

Indianapolis, Indiana, U.S.A., 46206-0944

Attach your sales receipt to this booklet for future reference. This information is required if service is needed during the warranty period.

PURCHASE DATE

NAME OF STORE

visit us at www.rca.com

Please do not send any products to the Indianapolis address listed in this manual or on the carton. This will only add delays in service for your product.

Importador

Comercializadora Thomson de México, S.A. de C.V.

Álvaro Obregón No. 151. Piso 13.

Col. Roma. Delegación Cuauhtémoc

C.P. 06700. México, D.F.

Telefono: 52-55-11-020360

RFC: CTM-980723-KS5

EXPORTER

Thomson Inc.

P.O. Box 1976

Indianapolis, IN 46206-1976

©2004 Thomson Inc.

Trademark(s)® Registered

Marca(s) Registrada(s)

www.rca.com

TOCOM 5591383B (EN)