

EN	Quick start guide	3
CS	快速入门指南	10
CT	快速入門指南	17

Quick start guide



- 1 Connect
- 2 Install
- 3 Enjoy

PHILIPS

Need help?

1. Look at our Support Centre website: www.philips.com/support
2. Call our Customer Care helpline in your country:

如需帮助

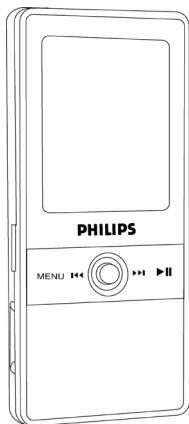
1. 请登陆飞利浦公司支持中心网站: www.philips.com/support
2. 或拨打飞利浦公司在当地的客户服务热线:

如需幫助

1. 請登陸飛利浦公司支持中心網站: www.philips.com/support
2. 或撥打飛利浦公司在當地的客戶服務熱線:

Country	Helpdesk	Tariff / min	Keep ready
中国	4008 800 008	本地资费	购买日期、产品型号和序列号
Hong Kong	26 19 9663	Local tariff	Date of Purchase, Model number and Serial number
Korea	02 709 1200	Local tariff	Date of Purchase, Model number and Serial number

What's in the box



In-ear headphones



Line-In Cable



USB Cable



CD-Rom with software
and user manual



Quick Start Guide

What else you'll need

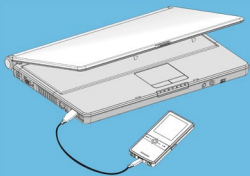


Computer

Computer with:

- Windows Me, 2000, XP
- CD-ROM drive
- USB port
- Internet connection (for access to updated support documents, manuals, future firmware and PC software upgrades).

1 Connect



1. Connect the USB cable to your player by plugging the mini USB (B type, male) end of the supplied USB cable to the bottom of the player, and the USB (A type, male) end to your computer.



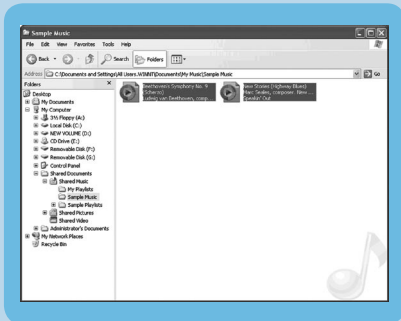
2. The battery of the player will start to charge automatically. It will be fully charged in 5 hours when charging it for the first time, and 80% charged in 3 hours.
3. The player is fully charged when the above image is shown in the right bottom corner of your player's screen.

2 Install

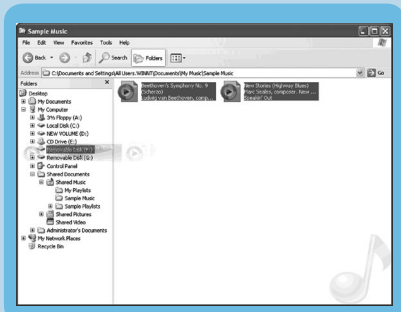
1. Insert the CD supplied with your product into the CD-ROM drive of your PC.
2. If the installation program does not start automatically, browse the CD contents via Windows Explorer and run the program by double clicking on the file ending with .exe.
3. Follow the onscreen instructions to complete the installation of the Philips Firmware Manager.
4. You may need to restart your PC after software installation.

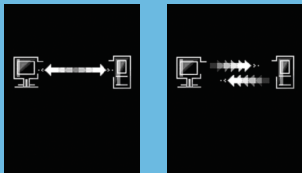
Transfer files with Windows Explorer

1. Connect your player to the computer.
2. Open Windows Explorer to find the files which you want to transfer to player.
3. Drag your mouse to select and highlight the files. See picture on the Right.



4. Drag the files to the directory of your player. See picture on the Right.





5. You will see the images on the left during connection. The left image means your player is connected to the computer and the right one indicates that files are being transferred to or from the player.

Multimedia

The SA5000 supports the following movie formats:

File type: .mov and M-JPEG .avi files, Resolution: QVGA (320x240 pixels),

Format: Motion-JPEG B, Frame rate: 10 fps, Maximum length: 10 minutes

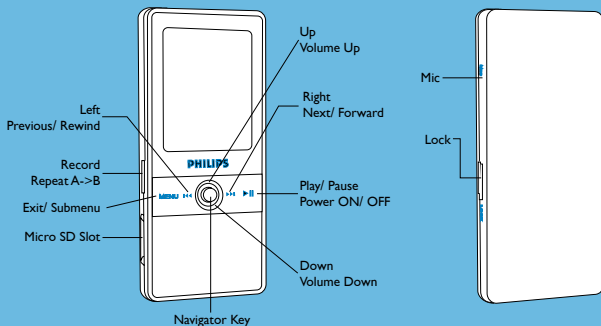
Audio settings

Format	- Linear PCM
Channels	- Mono
Rates	- 11.025kHz Max
PCM Settings	- Big Endian only
Sample size	- 16 bit Max

Note: If your Multimedia file is not .mov or .avi (M-JPEG) format, you have to transfer it into playable format before viewing. You can find a Multimedia converter program such as Quick Time Pro on the Internet.

3 Enjoy

Power on and play



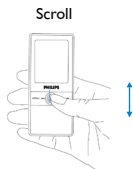
1. To power on, press the Play/Pause button $\gg \parallel$.
2. Press the Navigator key Up and Down to scroll through the Menu.
3. Select Music, Multimedia or Photo by pressing the Navigator key.
4. Press the Navigator key Left $\ll \ll$ or Right $\gg \gg$ to go back or forward.
5. Once you have found a song or recording you'd like to play, press $\gg \parallel$.
6. Press the Navigator key Up or Down to adjust the volume during Playback.
7. Switch the Lock key to the lock position to lock all buttons. Switch the Lock key back to unlock the buttons.

Using the Navigator Key

Your player has a Navigator key which can be pressed Left and Right to navigate through the Menu, Up and Down to scroll through the list. Press the Navigator key to confirm a selection



Through menu



Through list



To confirm item selection

	To	Do this
General	Power ON/ OFF	When turned off, press the play/pause key > once to power on; when turned on, hold for 2 seconds to power off.
	Navigate through Menu	Press the Navigator key Up and Down or Left I◀◀ and Right ▶▶I to navigate through the Menu.
	Scroll through list	Press the Navigator key Up and Down to scroll through the list.
	Select	Press the Navigator key
	Go Back	Press the Menu key
Music / Multi-media	Play/Pause music	Press Play/Pause key >
	Go to next track	Press Navigator key Right ▶▶I
	Go to previous track	Press Navigator key Left I◀◀
	Add track to Playlist	Select or play a track, press MENU for 2 seconds and select ADD to Playlist. Press Navigator or Play key to activate.
	Delete songs or add them to a playlist	Press the MENU key for 2 seconds to enter the submenu.
Photos	Start a slide show	While viewing press the > key
	Stop slide show	Press the > key again

Trouble shooting

How do I reset my player?

In the unlikely event that your player hangs, do not panic. Simply push and hold down the Play/Pause button >|| for approximately 10 seconds until the player shuts down.

Need help?

User Manual

Refer to the User Manual on the CD.

Online help

www.philips.com/support

Register your product

We strongly recommend that you register your product in order to gain access to free upgrades. To register your product, please log on to www.philips.com/register so that we can inform you as soon as new updates become available.



is a trademark of SRS Labs, Inc.
SRS WOW technology is incorporated under license from
SRS Labs, Inc.

Specifications are subject to change without notice.

Trademarks are the property of Koninklijke Philips Electronics N.V.
Or their respective owners

2006 © Koninklijke Philips Electronics N.V. All right reserved.

www.philips.com

wk6085



Be responsible
Respect copyrights



Printed in China