

Always there to help you

Register your product and get support at
www.philips.com/welcome

GoGEAR



SA4ARA 04

SA4ARA 08

SA4ARA 16

SA4ARA 32



User manual

PHILIPS

Contents

1 Important safety information	3
General maintenance	3
Recycling the product	5

2 Your new player	7
What's in the box	7
PC software loaded on the player	7
Files loaded on the player	7
Overview	8
Controls	8
Home screen	8
Lock/unlock the keys	9
Screen on/off	9
SafeSound	9
Adjust the volume	9

3 Get started	11
Charge power	11
Switch the player on or off	11
Automatic standby and shut-down	11

4 Music	12
Transfer music to the player	12
Find music on the player	12
Find music by song information	12
Find music by playlist	12
Find music by file folder	12
Superscroll	12
Play music	13
Play from the same collection	13
Select play options	13
Playlists	13
Add songs to a playlist-on-the-go	13
Remove songs from a playlist-on-the-go	13
Delete songs from the player	14

5 Audiobooks	15
Sync audio books to the player	15
Install AudibleManager on the PC	15
Download audiobooks to the PC	15

Sync to the player	15
Find audiobooks on the player	16
Play audiobooks	16
Use bookmarks	16
Delete audiobooks from the player	16

6 Videos	17
Transfer videos to the player	17
Find videos on the player	17
Play videos	17
Select brightness	17
Delete videos from the player	17

7 Pictures	18
Add pictures to the player	18
Find pictures on the player	18
View pictures	18
Start a slideshow	18
Select play options	18
Delete pictures from the player	18

8 FM radio	20
Tune in to radio stations	20
Listen through the speaker	20
Store preset stations	20

9 Recordings	21
Make recordings	21
Record audio/voices	21
Record from the FM radio	21
Listen to recordings	21
Delete recordings from the player	21
Upload your recordings to a computer	22

10 Text reader	23
Add text files to the player	23
Find text files on the player	23
Read text files	23
Delete recordings from the player	23

11 Folder view	24
-----------------------	-----------

12 Settings	25
Play mode	25
Sound settings	25
SafeSound	25
Sleep timer	25
Display settings	25
Backlight timer	26
Screensaver	26
Slideshow settings	26
Language	26
PC connection preference	26
Information	26
Format device	27
Factory settings	27
CD installer	27

13 Sync with PC media library through Philips Songbird	28
Install Philips Songbird	28
Collect media files from the PC	28
Set the watch folder	28
Import media files	29
Get contents from online sources	30
Search online	30
Create playlists in Philips Songbird	30
Create a playlist	30
Generate LikeMusic playlists	31
Save the play queue as a playlist	32
Manage media files in Philips Songbird	33
Edit metadata	33
Get album artwork	33
Remove media files from the library	34
Sync the player with Philips Songbird	34
Select auto or manual sync	34
Auto sync	35
Manual sync	35

14 Update the firmware through Philips Songbird	36
--	----

15 Repair the player through Philips Songbird	37
--	----

16 Technical data	38
--------------------------	----

Need help?

Please visit

www.philips.com/welcome

where you can access a full set of supporting materials such as the user manual, the latest software updates, and answers to frequently asked questions.

1 Important safety information

General maintenance

The translation of this document is for reference only.

In the event of any inconsistency between the English version and the translated version, the English version shall prevail.

! Caution

- To avoid damage or malfunction:
- Use only power supplies listed in the user manual.
- Do not expose the product to excessive heat caused by heating equipment or direct sunlight.
- Do not drop the product or allow objects to fall on your player.
- Do not allow the product to be submerged in water. Do not expose headphone socket or battery compartment to water; as water entering the set may cause major damage.
- Active mobile phones in the vicinity may cause interference.
- Back up your files. Ensure that you retain the original files you have downloaded to your device. Philips is not responsible for any loss of data if the product becomes damaged or not readable / legible.
- Manage (transfer, delete, etc.) your music files only with the supplied music software to avoid problems.
- Do not use any cleaning agents containing alcohol, ammonia, benzene, or abrasives as these may harm the product.
- Batteries (battery pack or batteries installed) shall not be exposed to excessive heat such as sunshine, fire or the like.
- Danger of explosion if battery is incorrectly replaced. Replace only with the same or equivalent type.

About operating and storage temperatures

- Operate in a place where temperature is always between 0 and 45°C (32 to 113°F)

- Store in a place where temperature is always between -20 and 45°C (-4 to 113°F).
- Battery life may be shortened in low temperature conditions.

Replacement parts/accessories:

Visit www.philips.com/support to order replacement parts/accessories.

Hearing Safety



A pleine puissance, l'écoute prolongée du baladeur peut endommager l'oreille de l'utilisateur.



! Warning

- To prevent possible hearing damage, do not listen at high volume levels for long periods.

The maximum output voltage of the player is not greater than 150 mV.

Wide band characteristic voltage WBCV:>= 75 mV

Modifications

Modifications not authorized by the manufacturer may void user's authority to operate the product.

Copyright information

All other brands and product names are trademarks of their respective companies or organizations.

Unauthorized duplication of any recordings whether downloaded from the Internet or made from audio CDs is a violation of copyright laws and international treaties.

The making of unauthorized copies of copy-protected material, including computer programs, files, broadcasts and sound recordings, may be an infringement of copyrights and constitute a criminal offense. This equipment should not be used for such purposes.

The Windows Media and the Windows logo are registered trademarks of Microsoft Corporation in the United States and/or other countries.

Be responsible! Respect copyrights.



Philips respects the intellectual property of others, and we ask our users to do the same. Multimedia content on the internet may have been created and/or distributed without the original copyright owner's authorization. Copying or distributing unauthorized content may violate copyright laws in various countries including yours.

Compliance with copyright laws remains your responsibility.

The recording and transfer to the portable player of video streams downloaded to your computer is intended only for use with public domain or properly licensed content. You may only use such content for your private, non-commercial use and shall respect eventual copyright instructions provided by the copyright owner of the work. Such instruction may state that no further copies shall be made. Video streams may include copy protection technology that prohibits further copying. For such situations the recording function will not work and you will be notified with a message.

Data logging

Philips is committed to improving the quality of your product and enhancing the Philips user experience. To understand the usage profile of this device, this device logs some info / data to the non-volatile memory region of the device.

These data are used to identify and detect any failures or problems you as a user may experience while using the device. The data stored, for example, will be the duration of playback in music mode, duration of playback in turner mode, how many times battery low was encountered, etc. The data stored do not reveal the content or media used on the device or the source of downloads. The data stored on the device are retrieved and used ONLY if the user returns the device to the Philips service center and ONLY to simplify error detection and prevention. The data stored shall be made available to user on user's first request.

© 2009, Xiph.Org Foundation

Redistribution and use in source and binary forms, with or without modification, are permitted provided that the following conditions are met:

- Redistributions of source code must retain the above copyright notice, this list of conditions and the following disclaimer.
- Redistributions in binary form must reproduce the above copyright notice, this list of conditions and the following disclaimer in the documentation and/or other materials provided with the distribution.
- Neither the name of the Xiph.org Foundation nor the names of its contributors may be used to endorse or promote products derived from this software without specific prior written permission.

This software is provided by the copyright holders and contributors "as is" and any express or implied warranties, including, but not limited to, the implied warranties of merchantability and fitness for a particular purpose are disclaimed. In no event shall the foundation or contributors be liable for any direct, indirect, incidental, special, exemplary, or consequential damages (including, but not limited to, procurement of substitute goods or services; loss of use, data, or profits; or business interruption) however caused and on any theory of liability, whether

in contract, strict liability, or tort (including negligence or otherwise) arising in any way out of the use of this software, even if advised of the possibility of such damage

XPAT XML Parser

Copyright (c) 1998, 1999, 2000 Thai Open Source Software Center Ltd

Permission is hereby granted, free of charge, to any person obtaining a copy of this software and associated documentation files (the "Software"), to deal in the Software without restriction, including without limitation the rights to use, copy, modify, merge, publish, distribute, sub-license, and/or sell copies of the Software, and to permit persons to whom the Software is furnished to do so, subject to the following conditions:

The above copyright notice and this permission notice shall be included in all copies or substantial portions of the Software. THE SOFTWARE IS PROVIDED "AS IS", WITHOUT WARRANTY OF ANY KIND, EXPRESS OR IMPLIED, INCLUDING BUT NOT LIMITED TO THE WARRANTIES OF MERCHANTABILITY, FITNESS FOR A PARTICULAR PURPOSE AND NON-INFRINGEMENT. IN NO EVENT SHALL THE AUTHORS OR COPYRIGHT HOLDERS BE LIABLE FOR ANY CLAIM, DAMAGES OR OTHER LIABILITY, WHETHER IN AN ACTION OF CONTRACT, TORT OR OTHERWISE, ARISING FROM, OUT OF OR IN CONNECTION WITH THE SOFTWARE OR THE USE OR OTHER DEALINGS IN THE SOFTWARE.

Recycling the product

Your product is designed and manufactured with high quality materials and components, which can be recycled and reused.

When you see the crossed-out wheel bin symbol attached to a product, it means the product is covered by the European Directive 2002/96/EC:



Never dispose of your product with other household waste. Please inform yourself about the local rules on the separate collection of electrical and electronic products. The correct disposal of your old product helps prevent potentially negative consequences on the environment and human health.

Warning

- Removal of the built-in battery invalidates the warranty and can destroy the product.
- The following removal and disposal instructions are steps that are to be performed at the end of the product's life only.

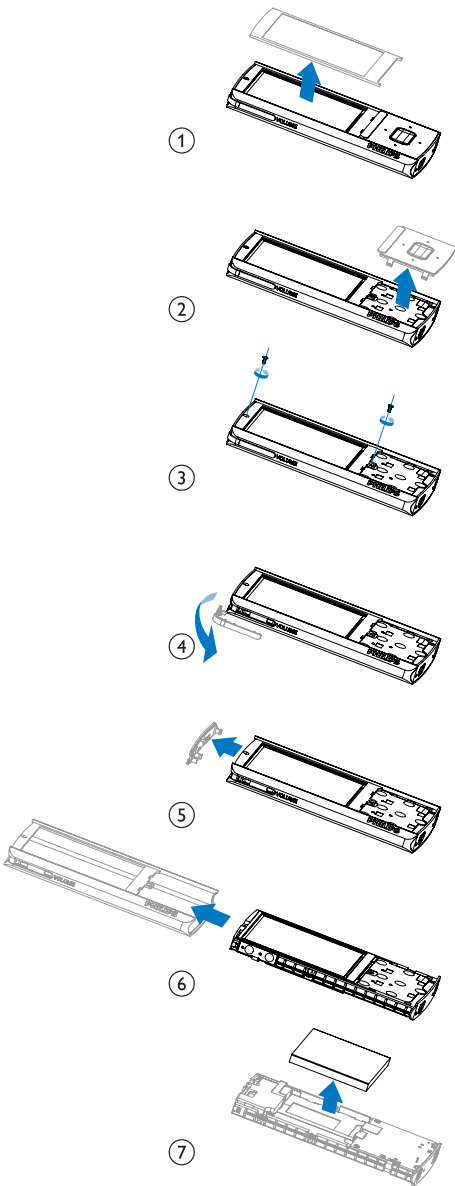
Your product contains a built-in rechargeable battery covered by the European Directive 2006/66/EC, which cannot be disposed of with normal household waste.



To safeguard the functionality and safety of your product, take your product to an official collection point or service center where a professional can remove the battery as shown:

Notice for the European Union

This product complies with the radio interference requirements of the European Union.



Please inform yourself about the local rules on separate collection of batteries. The correct disposal of batteries helps prevent potentially negative consequences on the environment and human health.

2 Your new player

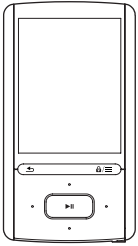
Note

- The images serve as reference only. Philips reserves the right to change color/design without notice.

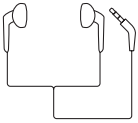
What's in the box

Make sure that you have received the following items:

Player



Earphones



USB cable



Quick start guide



Safety and Warranty sheet



PC software loaded on the player

ARIAZ comes with the following PC software:

- **Philips Songbird** (helps you update the firmware of the player; and manage your media library on a PC and the player).

To get Philips Songbird online,

- On your PC, go to www.philips.com/Songbird or www.philips.com/support.

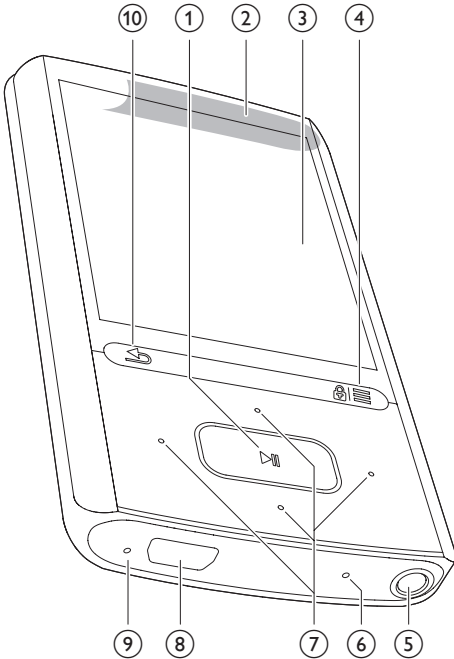
Files loaded on the player

The following files are loaded on ARIAZ:

- User manual
- Frequently asked questions

Overview

Controls



- ① **▶||**
 - Press and hold: Switch the player on or off
 - Press: Select options, or start/pause/resume play
- ② **Speaker**
- ③ **Display**
- ④ **🔒 / ☰**
 - Press: Show options menu
 - Press and hold: Lock/unlock all buttons
- ⑤ **🎧**
 - 3.5-mm headphone connector
- ⑥ **MIC**
 - Microphone
- ⑦ **🏠 / 📁 / 📷 / 📺**
 - Navigation buttons



- **on the list of options:**
 - Press: Skip to the previous/next option
 - Press and hold: Show the initial of current option in a list of options that are sorted by alphabet
- **on the play screen:**
 - Press: Increase/decrease the volume
 - Press and hold: Increase/decrease the volume quickly



- **on the play screen:**
 - Press: Skip to the next/previous file
 - Press and hold: Fast forward or rewind within current file



- USB connector for power charging and data transfer



- Press the hole by using the tip of a ball pen when the screen does not respond to the pressing of keys



- Press: Back one level
- Press and hold: Return to the Home screen

Home screen

Menu	Mode	To
🎵	Music	play audio files
📺	Video	watch videos
📷	Pictures	view pictures
📻	FM radio	tune in to the FM radio; record from the FM radio
🎧	Recordings	create or listen to recordings
📁	Folder view	view files in folders
📄	Text reader	read text files
⚙️	Settings	customize the settings of ARIAZ

Navigate from the Home screen

- From the Home screen, you can access functional menus by pressing the navigation buttons / / / and .
- To go back to to previous screens, press repeatedly; or, press and hold to return to the Home screen.

Switch between the Home screen and play screen

On the Home screen,

During music play or radio play,

- Press and select **[Now playing]** or **[Last played]**.

On the play screen,

- Press and hold .

Select a theme

To select a theme for the display,

- On the Home screen, press and select **[Theme]**.

Lock/unlock the keys

When the player is on, use the lock to prevent accidental operation.

- Press and hold / to lock or unlock the keys.
 - ↳ All buttons except the volume keys are locked and a lock icon is displayed.

Screen on/off

To save power, the screen switches off automatically after the pre-defined time duration if

- no new action is taken on **ARIAZ**; and
- a value is selected in > **[Display settings]** > **[Backlight timer]**.

To exit the power-saving mode

- Press any key.

SafeSound

With the earphones, **SafeSound** allows you to listen to music in a safe way.

When you listen to music through the earphones, the sound pressure on your ears is estimated¹ based on the electrical characteristics of the player and earphones.

Then, the estimate is compared against the reference levels² of sound pressure. As a result, icons of different colors can be displayed to indicate status of sound pressure and the levels of risks to hearing damage.

	Level of sound pressure	Maximum duration
	more than 90 decibels	30 minutes a day
	85 to 90 decibels	2 hours a day
	80 to 85 decibels	5 hours a day
	safe	more than 5 hours a day

Tip

- ¹The methodology is based on European norm (50332-1/2).
- ²The reference levels come from the minimum requirement for health and safety that the European directive 2003/10/EC provides for the noises exposed to individuals.

Use the SafeSound

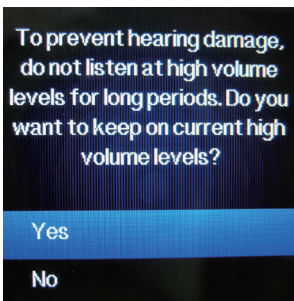
- 1 Make sure that you have plugged the earphones into the player.
- 2 On the music play screen, press and select **[Sound settings]** > **SafeSound**.
- 3 Select the **SafeSound** options.

Tip

- For the information about SafeSound options, see 'SafeSound' (see 'SafeSound' on page 25).

Adjust the volume

- On the play screen, press / .
 - ↳ When you reach the high volume level, a pop-up screen is displayed.




- To continue to increase the volume, select **[Yes]**.
- To exit, select **[No]**.
 - ↳ You return to the previous volume level.

3 Get started

all settings and switches off within 60 seconds.


Note

- Rechargeable batteries have a limited number of charge cycles. Battery life and number of charge cycles vary by use and settings.
- The charging animation stops and the  icon is displayed when the charging process is completed.

To conserve battery power and increase the play time, do the following on ARIAZ:

- Set the backlight timer to a low value (go to * > [Display settings] > [Backlight timer]).

Switch the player on or off

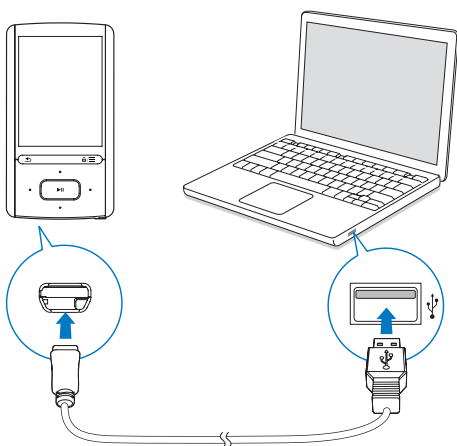
Press and hold  until the player is switched on or off.

Automatic standby and shut-down

The player has an automatic standby and shut-down feature that can save battery power: After 5 minutes in idle mode (no play, no button is pressed), the player switches off.

Charge power

ARIAZ has a built-in battery that can be charged through the USB port of a computer. Connect ARIAZ to a PC by using the USB cable.

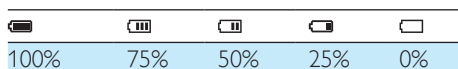


Note

- When you connect ARIAZ to a computer, you are briefly prompted to select: [Charge & transfer] or [Charge & play]. If no option is selected, [Charge & transfer] applies.
- To play ARIAZ when you charge power, select [Charge & play].

Battery level indication

The display indicates the approximate levels of the battery status as follows:



↳ A flashing battery screen indicates that the battery is low. The player saves

4 Music

Transfer music to the player

You can transfer your PC media library to **ARIAZ** in the following ways:

- Sync through Philips Songbird (see 'Sync with PC media library through Philips Songbird' on page 28); With the media management software, you can access online music stores, create playlists, or edit your media collection by metadata or ID3 tag.
- Drag and drop media files in Windows Explorer:
By doing so, you can organize your media collection by file folder:

To drag and drop music files in Windows Explorer,

- 1 Connect **ARIAZ** to a PC.
- 2 On the PC, under **My Computer** or **Computer**,
 - select **ARIAZ**, and create file folders.
- 3 On the PC, drag and drop media files to the file folders on **ARIAZ**.
 - Alternatively, drag and drop file folders from the PC to **ARIAZ**.

Find music on the player

After you sync the player with your PC media library, find the music on the player.

Find music by song information

In **🎵**, songs are sorted by metadata or ID3 tag under different collections: **[All songs]**, **[Artists]**, **[Album art]**, **[Albums]**, or **[Genres]**.

[All songs]

- Songs are sorted by song title in alphabetical order.

[Artists]

- Songs are sorted by artist in alphabetical order;
- Under each artist, songs are sorted by album in alphabetical order.

[Album art]

- Thumbnails of album art are listed for albums in alphabetical order.

[Albums]

- Songs are sorted by album in alphabetical order.

[Genres]

- Songs are sorted by genre, such as pop, rock.

Find music by playlist

In **🎵** > **[Playlists]**, find the playlist that you transfer from the PC media library.

Find music by file folder

In **📁**, find music by file folder.

To organize music files by file folder,

- 1 Connect **ARIAZ** to a PC.
- 2 On the PC, under **My Computer** or **Computer**,
 - select **ARIAZ**, and create file folders.
- 3 On the PC, drag and drop music files to the file folders on the **ARIAZ**.
 - Alternatively, drag and drop file folders from the PC to **ARIAZ**.

Superscroll

In a list of options that are sorted by alphabet, **Superscroll** allows you to browse the options by initial.

- Press and hold **🔍** / **🔍** to start **Superscroll**.
 - ↳ On the screen, you can see the initials of current options.



Play music

You can start play from a song, or play an entire album or artist.

To start play from a song,

- 1 Select a song.
- 2 Press ►|| to start play.
↳ Play starts from current song.

On the play screen,

- Press ►|| to pause and resume play.
- To go to the previous screen, press ⏪.
↳ The play screen returns a few seconds later.
↳ On the play screen, you can see the file information and play status.

To adjust the volume,

- On the play screen, press 🔊 / 🔇.

To select a music file on the play screen,

- Repeatedly press 🔍 / 🔍.

To rewind or fast forward within current song,

- On the play screen, press and hold ⏮ / ⏭.

Play from the same collection

During the song play, you can switch to a collection the same as that of current song.

- 1 On the play screen, press ≡ and select [Play mode].
- 2 In [Play music from...], select [... this artist], [... this album], or [... this genre]. Press ►||.
↳ You start to play current artist, album, or genre.

To play all the songs on the player,

- 1 On the play screen, press ≡ and select [Play mode].
- 2 In [Play music from...], select [All songs]. Press ►||.

Select play options

On the play screen, press ≡ to select play options, such as play mode, sound settings, and sleep timer (see 'Settings' on page 25).

Playlists

On the players, you can find the following playlists:

- playlists that you transfer from the PC media library;
- three playlists-on-the-go for you to add songs on the player.

Add songs to a playlist-on-the-go

To add current song,

- 1 Select or play a song.
- 2 On the list of songs or play screen,
 - press ≡ and select [Add to playlist].
- 3 Select a playlist-on-the-go. Press ►||.
↳ You save current song to the playlist.

To add an album or artist,

- 1 Select an album or artist.
- 2 On the list of albums or artists,
 - press ≡ and select [Add to playlist].
- 3 Select a playlist-on-the-go. Press ►||.
↳ You save the album or artist to the playlist.

Remove songs from a playlist-on-the-go

Remove current song from a playlist

- 1 On the play screen, press ≡ > [Remove from Playlist].
- 2 Select a playlist-on-the-go. Press ►||.

- ↳ You remove current song from the selected playlist.

Remove all the songs in a playlist

- 1 Select **[Playlists]** > **[Clear playlist]**.
- 2 Select a playlist-on-the-go. Press **▶||**.
 - ↳ You remove all the songs from the playlist.

Delete songs from the player

To delete a song,

- 1 Select or play a song.
- 2 On the list of songs or play screen,
 - press **≡** and select **[Delete]**.
- 3 Select **[Yes]**.
 - ↳ Current song is deleted from the player.

To delete an artist or album,

- 1 Select an artist or album.
- 2 On the list of artists or albums,
 - press **≡** and select **[Delete]**.
- 3 Select **[Yes]**.
 - ↳ Current artist or album is deleted from the player.

5 Audiobooks

Go to **J** > **[Audiobooks]** to play books in audio formats that you have downloaded from www.audible.com.

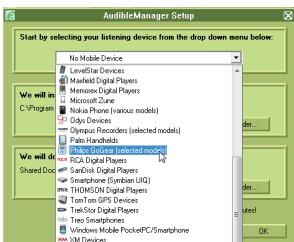
Sync audio books to the player

From www.audible.com, download and install the **AudibleManager** software on your PC. Through the software, you can

- download audiobooks from www.audible.com to your PC library of audio books;
- sync the audiobooks to your player.

Install AudibleManager on the PC

- 1 Connect your PC to the Internet.
- 2 From www.audible.com, download the **AudibleManager** software for MP3/ MP4 players.
- 3 Install the software on your PC:
 - On the setup screen, select **Philips GoGear (selected models)** from the drop-down list of listening devices;



- Follow onscreen instructions to complete the installation.

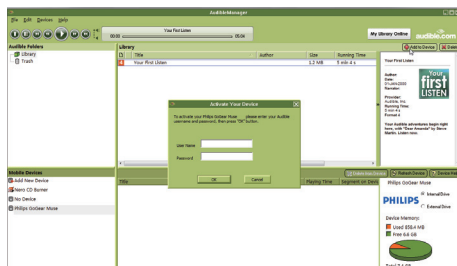
Download audiobooks to the PC

- 1 Connect your PC to the Internet.

- 2 Launch **AudibleManager** on your PC.
- 3 On **AudibleManager**, click the **My Library Online** button to connect to www.audible.com.
- 4 Select and download audio books:
 - Log in to your account with www.audible.com;
 - Download audio books in the format of **A** or **E**.
 - ↳ The downloaded books are automatically added to your library on **AudibleManager**.

Sync to the player

- 1 Launch **AudibleManager** on your PC.
- 2 Connect the player to the PC. Wait till the player is recognized by **AudibleManager**.
- 3 On **AudibleManager**, click **Add to Device**.
 - The first time you connect the player to **AudibleManager**, activate the player as prompted.



To check the audio books transferred to the player,

See the player pane on **AudibleManager**.

- If necessary, click **Refresh Device**.

Find audiobooks on the player

In **🎧** > **[Audiobooks]**, audiobook files are organized by book title or author:

[Books]

- Books are sorted by book title in alphabetical order.

[Authors]

- Books are sorted by author in alphabetical order.

Play audiobooks

1 Select a book.

2 Press **▶||** to start play.

- ↳ On the play screen, you can see the book information and play status.

To resume the last played book,

- In **[Audiobooks]**, select **[Resume [book name]]**.

On the play screen,

- Press **▶||** to pause and resume play.
- To go to the previous screen, press **⏪**.

To select the play speed during play,

- On the play screen, press **≡** > **[Playback speed]**. Select an option.

To skip titles or sections during play,

1 On the play screen, press **≡** > **[Navigation mode]**. Select **[Titles]** or **[Section]**.

2 On the play screen, press **⏮** / **⏭**.

Use bookmarks

On an audiobook, you can add up to 10 bookmarks to the play time. Start play from the bookmarked play time as needed.

To add a bookmark,

1 On the play screen, press **≡** and select **[Bookmarks]** > **[Add bookmark]**.

2 Select a location.

- ↳ Current play time is added to the location in the list of bookmarks.

To play from a bookmarked play time,

- On the play screen, press **≡** and select **[Bookmarks]** > **[Go to bookmark]**. Select an option.
 - ↳ Play starts from the selected play time.

To delete a bookmark,

- On the play screen, press **≡** and select **[Bookmarks]** > **[Delete bookmark]**. Select an option.
 - ↳ You remove the play time from the list of bookmarks.

Delete audiobooks from the player

- On the play screen, press **≡** > **[Delete Audiobook]**.
 - ↳ Current audiobook is deleted from the player.


6 Videos

Transfer videos to the player


Transfer videos from your PC media library to the player.

Find videos on the player


Find videos by file name

- Go to .
 - ↳ Videos are listed by file name in alphabetical order.

Find videos by file folder

- Go to .
 - ↳ Videos are organized by file folder as on the PC.


Play videos

- 1 Select a video.
- 2 Press  to start play.
 - ↳ The video plays in the landscape view.



On the play screen,

- Press  to pause and resume play.





To select a video file on the play screen,

- Repeatedly press  / .


To rewind or fast forward within current video,

- On the play screen, press and hold  / .

Select brightness

- 1 On the play screen, press  and select **[Brightness]**.
- 2 Press  /  to select an option.
- 3 Press .

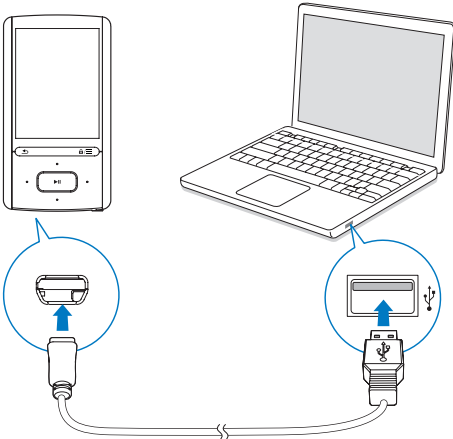
Delete videos from the player

- 1 Select or play a video.
- 2 On the list of videos or play screen,
 - press  and select **[Delete video]**.
 - ↳ Current video is deleted from the player.

7 Pictures

Add pictures to the player

- 1 Connect **ARIAZ** to a computer.
- 2 On the PC, under **My Computer** or **Computer**,
 - select **ARIAZ**, and create file folders.
- 3 On the PC, drag and drop files to the file folders on **ARIAZ**.
 - Alternatively, drag and drop file folders from the PC to **ARIAZ**.



Find pictures on the player

Find pictures by file name

- Go to .
 - ↳ Pictures are listed by file name in alphabetical order.

Find pictures by file folder

- Go to .
- ↳ Pictures are organized by file folder as on the PC.

View pictures

- Select a picture. Press to view the picture in full screen.
 - ↳ The picture is displayed in the landscape view.

On the play screen,

- Press / to rotate the picture.
- Press / to select a picture.

Start a slideshow

- When you view pictures in full screen, press to start a slideshow.
 - ↳ Pictures play one by one.

Select play options

On the play screen, press to select play options:

[Brightness] Select the brightness of the screen.

[Backlight timer] Select a value. After the selected time duration, the screen switches off automatically.

In **[Slideshow settings]**, select your options for slideshow:

[Time per slide] Select the time interval between two slides.

[Repeat] Play pictures in current folder repeatedly.

[Shuffle] Play pictures in current folder in random order.

Delete pictures from the player

- 1 Select or play a picture.
- 2 On the list of pictures or play screen,
 - press and select **[Delete picture]**.

↳ Current picture is deleted from the player.


8 FM radio

Note

- Plug in the supplied earphones when you tune in to radio stations. The earphones double as antenna. For better reception, move the earphone cable in different directions.

Tune in to radio stations

Auto tune

The first time you go to , start Auto tune to search for stations as prompted. Up to 30 stations are stored as presets.


On the list of preset stations,

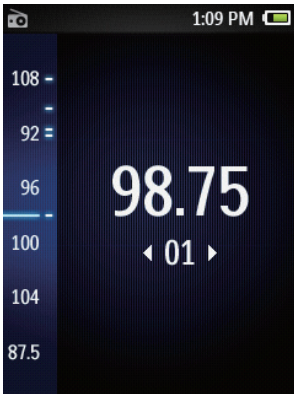
- Press  or  repeatedly to select a preset station. Press  to start play.

To select a preset on the play screen,


- Press  or  repeatedly.

Alternatively,

- Press  and select **[Presets]**.
↳ The list of presets is displayed.








Tip

- When you move to a new place (such as a new city or country), restart auto tune for better reception. On the play screen, press  and select **[Auto tune]**.

Manual tune


To search for a frequency or station,

- 1 On the play screen, press  and select **[Manual tune]**.
- 2 Press and hold  or .
↳ You tune in to the next station from current frequency.
- For fine tuning, press  or  repeatedly.

Listen through the speaker

You can listen to the radio through the speaker or earphones.

To play through the speaker or earphones,





- 1 On the play screen, press  and select **Channel out**.
- 2 Select **[Speaker]** or **Headphones**.

To mute or unmute the radio play,


- On the play screen, press .

Store preset stations

On **ARIAZ**, you can store up to 30 preset stations.

- 1 Tune in to a radio station.
- 2 On the play screen, press  and select **[Save to preset]**.
- 3 Press  or  to select a location in the list of presets. Press .
↳ Current station is saved to the location.

To remove current preset station,

- 1 On the play screen, press  and select **[Remove preset]**.
- 2 Select **[Yes]**.
↳ Current station is removed from the list of presets.


9 Recordings

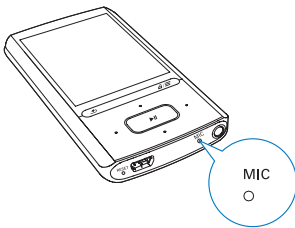
Make recordings




With **ARIAZ**, you can record:

- voices or audio through the built-in microphone; or
- radio programs when the radio plays on the player.



Record audio/voices




- 1 In , select **[Start voice recording]**.
↳ Recording screen appears.
- 2 Ensure that the microphone is close to the sound source to be recorded.



- 3 Press  to toggle between pause and record. Press  to stop.
- 4 Select **[Yes]** to save the recording.
↳ Recordings are saved to  > **[Recordings Library]** > **[Voice recordings]**. (Filename format: VOICEXXX.MP3, where XXX is the recording number that is generated automatically.)

Record from the FM radio







- 1 In , tune in to a radio station.
- 2 On the play screen, press  and select **[Start FM radio recording]**.
↳ You start recording from the FM radio.

- 3 Press  to toggle between pause and record. Press  to stop.
- 4 Select **[Yes]** to save the recording.
↳ Recordings are saved to  > **[Recordings library]** > **[FM radio recordings]**. (Filename format: FMRECXXX.MP3, where XXX is the recording number that is generated automatically.)



Note

- The feature of FM radio recording is available with some versions only; Refer to the onscreen menu of the player to find out which features are available to you.

Listen to recordings

- 1 In  > **[Recordings library]**, select a recording.
- 2 Press  to start play.
To select a file on the play screen,
 - Repeatedly press  / .**To rewind or fast forward within current file,**
 - On the play screen, press and hold  / .

Delete recordings from the player

- 1 Select or play a recording.
- 2 On the list of recordings or play screen,
 - press  and select **[Delete]**.
↳ Current recording is deleted from the player.**To delete all the recordings on the player,**
 - In  > **[Recordings library]**, select a recordings library. Select **[Delete all]**.

Upload your recordings to a computer

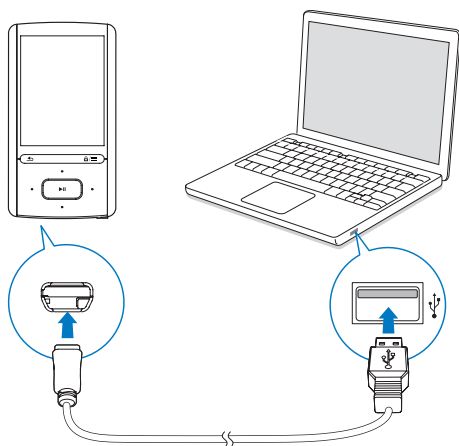
- 1 Connect **ARIAZ** to a computer.
- 2 On the PC, under **My Computer** or **Computer**,
 - select **ARIAZ**;
 - in **ARIAZ**, select recordings in **Recordings > Voice** or **FM**.
- 3 Drag and drop the recording files to a location on the PC.

10 Text reader

You can read text files (.txt files) on the player.

Add text files to the player

- 1 Connect **ARIAZ** to a computer.
- 2 On the PC, under **My Computer** or **Computer**,
 - select **ARIAZ**, and create file folders.
- 3 On the PC, drag and drop files to the file folders on the **ARIAZ**.
 - Alternatively, drag and drop file folders from the PC to **ARIAZ**.



Find text files on the player

Find text files in the file list

- From the Home screen, select **■**.
 - ↳ A list of text files is displayed.
 - ↳ The text files are sorted by file folder in alphabetical order.

Find text files by file folder

- In **■**, select file folders and files as you organize them on the PC.

Read text files

- 1 Select a text file.
 - 2 Press **▶||** to start play.
 - 3 On the play screen,
 - Press **◀** or **▶** to turn over pages;
 - Press **▲** or **▼** to scroll up or down.
- To increase or decrease the font size,**
- On the play screen, press **≡** to select an option.

Delete recordings from the player

- 1 Select or play a text file.
- 2 On the list of text files or play screen,
 - press **≡** and select **[Delete]**.
 - ↳ Current text file is deleted from the player.

11 Folder view

Go to ■ to view and play media files from the media library on the player.

Music: for music files that you sync to the player through **Philips Songbird**;

Video: for video files that you sync to the player through **Philips Songbird**;

Playlists: for playlists that you sync to the player, and the playlists-on-the-go that you create on the player;

SERVICE: for the audiobooks that you sync to the player through **AudibleManager**;

Recordings: for voice or *FM recordings that you make on the player.

To find files transferred in Windows Explorer,

- Locate the files as you have organized in Windows Explorer on the PC.



Note

- *The feature of FM radio recording is available with some versions only. Refer to the onscreen menu of the player to find out which features are available to you.

12 Settings

In *****, select your options for the player:

- 1 Press **⏮** / **⏭** to select an option.
- 2 Press **▶||** to confirm.

Play mode

In **[Play mode]**, select play modes for music play:
[Play music from...]

switches to a collection the same as that of current song

[Repeat]

-
- | | |
|---------------------|--------------------------------------|
| [Repeat 1] | repeats current song. |
| [Repeat all] | repeats all songs in current folder. |
-

[Shuffle]

-
- | | |
|-------------|--|
| [On] | plays all songs in current folder in random order. |
|-------------|--|
-

If both **[Repeat all]** and **[Shuffle]** are activated,

- All songs in current folder are repeated in random order.

Sound settings

-
- | | |
|--------------------|--|
| [FullSound] | Restores the sonic details that music compression loses (e.g. MP3, WMA). |
|--------------------|--|
-

- | | |
|--------------------|------------------------------------|
| [Equalizer] | Defines sound settings as desired. |
|--------------------|------------------------------------|
-



Note

- Equalizer is deactivated when you select **FullSound**.

SafeSound

Switch on **SafeSound**

- In **[SafeSound]**, select **[On]**.

Auto safe volume

If you select a volume level higher than the safe one, **[Auto safe volume]** can have the volume level gradually adjusted to the safe one.

- In **[SafeSound settings]**, select **[Auto safe volume]** > **[On]**.

Volume limit

To set a volume limit for yourself, select

[SafeSound settings] > **[Volume limit]**.

- Press **⏮** / **⏭** to set the volume limit. Press **▶||** to confirm.

Sleep timer

Switch on the sleep timer. The **ARIAZ** can switch off automatically after a certain time duration.

- In **[Sleep timer]** > **[Set sleep timer...]**, select an option. Press **▶||**.
 - ↳ After the selected time duration, the device is switched off automatically.

After the sleep timer is switched on,

- Select ***** > **[Sleep timer]**;
- Alternatively, on the music play screen, press **≡** > **[Sleep timer]**.
 - ↳ You can see the time left before the player is switched off.

Display settings


-
- | | |
|---------------------|---------------------------------------|
| [Brightness] | Adjusts the brightness of the screen. |
|---------------------|---------------------------------------|
-

- | | |
|----------------|------------------------------------|
| [Theme] | Selects the theme for the display. |
|----------------|------------------------------------|
-

Backlight timer

The screen enters the idle mode, if no new action is taken on the player. After the pre-defined time duration, the idle screen is switched off automatically. To save battery power, select a low value for the time duration.

To set the time duration

- 1 From the Home screen, select  > [Display settings] > [Backlight timer].
- 2 Select a time duration.
↳ After the selected time duration, the idle screen is switched off automatically.



Tip

- For power-saving purpose, select a low value.





To exit the power-saving mode

- Press any key.

Screensaver

If you have selected a screensaver, the screensaver appears on the idle screen after the pre-defined time duration.

To select a screensaver

- 1 From the Home screen, select  > [Display settings] > [Screensaver].
- 2 In [Screensaver], press  /  and  to select an option:

[Album art]	shows the CD cover of current song or last played song, if available.
-------------	---

[Screen off]	switches off the screen.
--------------	--------------------------

[Demo mode]	shows major features of the player.
-------------	-------------------------------------

To exit the screensaver

- Press any key.

Slideshow settings

[Time per slide]	selects play time for each slide.
------------------	-----------------------------------

[Repeat]	plays all slides repeatedly, if activated.
----------	--

[Shuffle]	plays all slides in random order, if activated.
-----------	---

Language

You can change the language selection in [Language].

PC connection preference

In [PC connection preference], select how the player is connected to a PC. The player allows the access by a PC through USB Mass Storage Class (MSC), or Media Transfer Protocol (MTP).

[MSC]	*allows the player to also work as Philips Songbird drive. Click the Philips Songbird drive to start the program installation on the PC.
-------	--

[MTP]	during the sync to the player, allows copyright-protected music to be converted to playable formats through Philips Songbird .
-------	---



Tip

- *Make sure that you select [Enable] in  > CD-ROM.

Information

In [Information], learn the following information about the player:

[Player information]

[Model:]	full product name Check the full product name when updating firmware from the support website.
[Firmware version:]	current firmware version Check the firmware version when updating firmware from the support website.
[Support site:]	web site that provides support for the player

[Disk space]

[Free space:]	space available
[Total space:]	memory size
[Songs]	space that songs occupy
[Pictures]	space that pictures occupy
[Videos]	space that videos occupy

[File type supported]

[Music]	supported types of music files
[Pictures]	supported types of picture files
[Videos]	supported types of video files

Format device

Format the player. You remove all the data that are stored on the player.

- Select **[Format device]**, and then, select **[Yes]** as prompted.

Factory settings

In **[Factory settings]**, restore the player to factory settings. Files transferred to the player are retained.

CD installer

If you have selected **[MSC]** in *** > [PC connection preference]**, the **[CD installer]** options are displayed. In **[CD installer]**, select **[Enable]** to allow the player to work as **Philips Songbird** drive. Double click on the drive to start the program installation on the PC.



Tip

- After you repair the player, the CD-ROM partition and Philips Songbird installer are removed from the player (see 'Repair the player through Philips Songbird' on page 37). More space is available on the player.

13 Sync with PC media library through Philips Songbird

With **Philips Songbird**, you can do the following:

- Manage your music collection on a PC;
- Sync **ARIAZ** with your PC music library;
- Register **ARIAZ** on www.philips.com/welcome;
- Update the firmware of **ARIAZ** (see 'Update the firmware through Philips Songbird' on page 36);
- Repair **ARIAZ** (see 'Repair the player through Philips Songbird' on page 37).

Install Philips Songbird

Install Philips Songbird for the first time

When you connect **ARIAZ** to a PC for the first time, a pop-up screen is displayed:

- 1 Select your language and country.
- 2 Follow the onscreen instructions to complete the installation.

Note

- The installation requires you to agree to the license terms.

If the pop-up screen is not displayed automatically:

- 1 On the player, make sure that you have selected the following options:
 - In *** > [CD installer]**, select **[Enable]**.
- 2 On the PC, select **My Computer** (Windows XP / Windows 2000) / **Computer** (Windows Vista / Windows 7).

↳ The **Philips Songbird** drive is displayed.

- 3 To start installation, double-click the **Philips Songbird** drive.

Note

- The installation requires you to agree to the license terms.

Collect media files from the PC

Set the watch folder

Create a central folder

You can have all music files automatically added to your library when you copy them to a folder. Creating a central folder is recommended. In **Philips Songbird**, set the central folder as the watch folder. Each time you launch **Philips Songbird**, songs are added to/ removed from **Philips Songbird** as they are on the central folder.

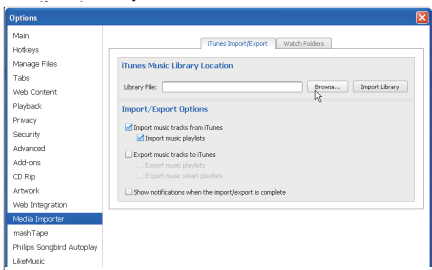
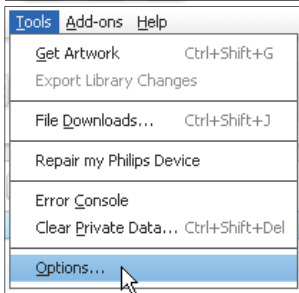
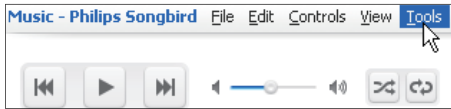
On the PC, create a central folder to save all music files, for example, D:\Songbird media.

First-time launch

The first time you launch **Philips Songbird** on a PC, do the following as prompted to import existing media files into **Philips Songbird**:

- Select the iTunes media folder to import an existing iTunes library;
- Select the central folder to search and import the existing music files.
 - ↳ The central folder is set as the watch folder of **Philips Songbird**.

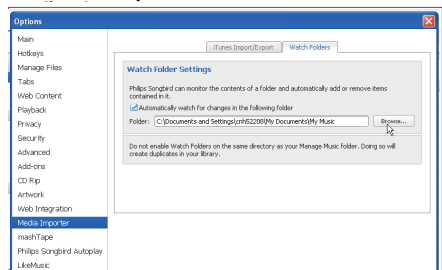
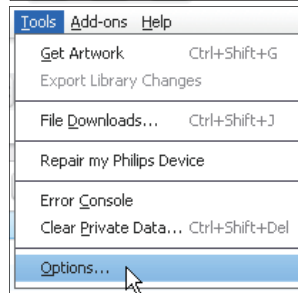
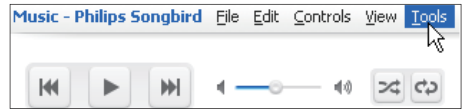
Set iTunes media folder



- 1 On Philips Songbird, go to **Tools > Options...**
- 2 Select **Media Importer**, and then the **iTunes Importer** tab.
- 3 Verify your library location and options.
- 4 Click the **Import Library** button next to the library location.
 - ↳ The software imports the iTunes library into **Philips Songbird**.

Set the watch folder

In **Philips Songbird**, set the watch folder as follows:



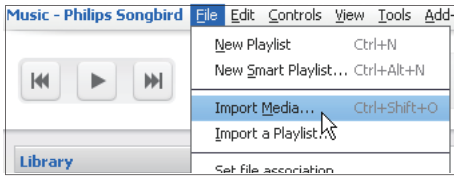
- 1 Select **Tools > Options**.
- 2 In **Options**, select **Media Importer**. Then, select the **Watch Folders** tab.
- 3 In **Watch Folders**, tick the check box as shown.
- 4 Click **Browse**, and select the central folder (e.g. D:\Songbird media) as the watch folder.
 - ↳ In **Philips Songbird**, media files are added or removed as they are in the central music folder.

Import media files

Import media files from other folders
In **Philips Songbird**,

- go to **File > Import Media** to select folders on the PC.
 - ↳ Media files are added under **Library**.

- or, go to **File > Import a playlist** to select playlists on the PC.
↳ Media files are added under **Playlists**.



Get contents from online sources

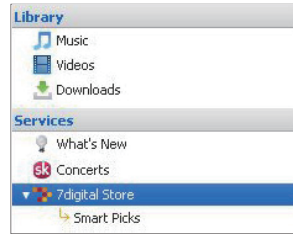
You can access and purchase content from online sources. Find the available online services under **Services** on the source selector pane.

Note

- Before you download or purchase content from online services, subscribe to the online service and log in to your account.
- Some of the services are available in certain countries.

Search online

- 1 Select an online service:
 - Select an option under **Services**;
 - Alternatively, in the search box, click the down arrow to select an online service.



- ↳ You enter the Web page of the online source.

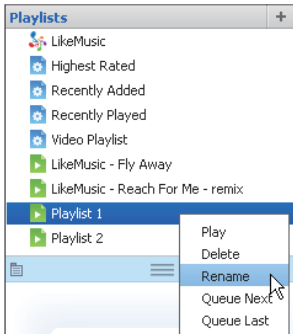
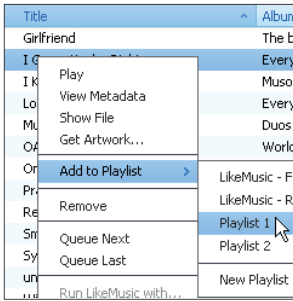
- 2 Search for your media file.
 - If necessary, use the search box to enter a keyword.

Create playlists in Philips Songbird

With a playlist, you can manage and sync your songs as needed.

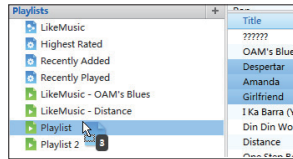
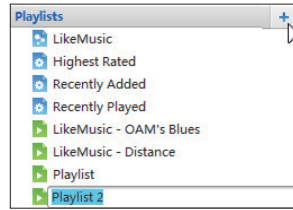
Create a playlist

Select songs that you want to play. Add the songs to a playlist.



- 1 In **Library** > **Music**, select songs.
 - To select multiple songs, hold down the **Ctrl** button when you click songs.
- 2 To add the songs to a playlist:
 - Right click on the songs, and select **Add to Playlist**;
 - Select a playlist;
 - ↳ The songs are added to the playlist.
 - To create a playlist, select **New Playlist**.
 - ↳ A new playlist is created for the songs.
 - ↳ Under **Playlists**, name the playlist as needed.

Alternatively,
Create a playlist. Add selected songs to the playlist.



- 1 Under **Playlists**, click **+** to create a playlist.
 - ↳ A new playlist is created.
- 2 Name the new playlist as desired.
- 3 Drag and drop media files to the playlist.



Tip

- To drag and drop multiple files at the same time, hold down the **Ctrl** button when you click on selections.

Generate LikeMusic playlists

Based on the **LikeMusic** analysis, a playlist can be generated from a seed song. **LikeMusic** analyzes songs in your library and, based on their music characteristics, creates relationships between them. These relationships help **LikeMusic** to create playlists of songs that sound great together. When you import songs into the music library of **Philips Songbird**, the **LikeMusic** analysis starts. For the song that completes the analysis, the **LikeMusic** icon lights up; For the song that cannot complete the analysis, the icon remains gray.

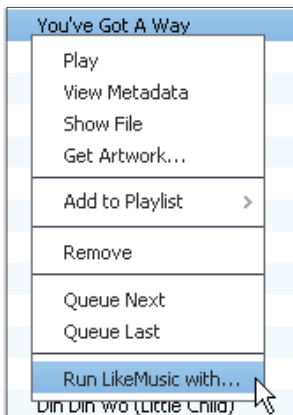


Select a seed song

Make sure that the seed song has completed the **LikeMusic** analysis.

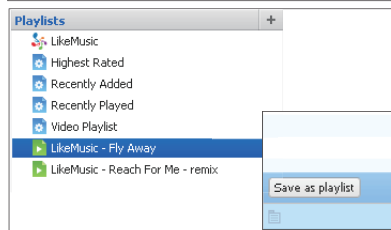
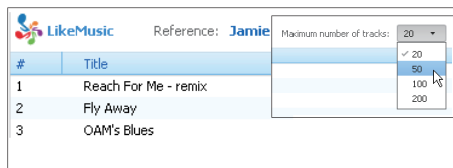
- In **Library > Music**, double click the blue **LikeMusic** icon of the song;

Alternatively,



- In **Library > Music**, right click on a song and select **Run LikeMusic with**.
↳ A **LikeMusic** playlist is displayed in the **LikeMusic** page.

Set the maximum number of songs



- Select a number in the drop-down list.

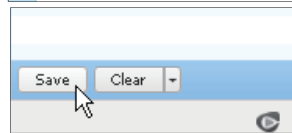
Save the LikeMusic playlist

- Click **Save as playlist** in the **LikeMusic** page.
↳ The **LikeMusic** playlist is saved under **Playlists**.

Save the play queue as a playlist

Create a play queue

- Drag and drop songs or playlists to the **Play Queue** pane.



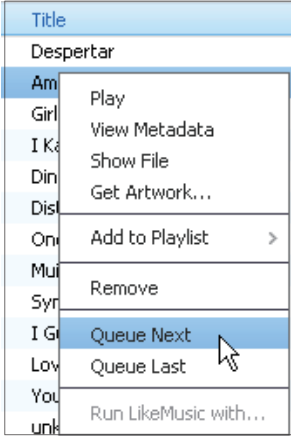
Save the play queue as a playlist

- Click **Save**.
↳ The play queue is saved as a playlist under **Playlists**.

2 Under **Playlists**, name the playlist as needed.

Add songs to the top or end of the play queue

- To add songs to the top, right click on the options and select **Queue Next**;
- To add songs to the end, right click on the options and select **Queue Last**.

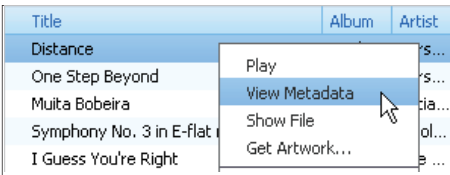


Manage media files in Philips Songbird

Edit metadata

By editing file information (metadata or ID3 tag), you can have media files sorted automatically by song title, artist, album, and other information.

After you sync the media files to the player, you can browse the media library by metadata.



1 In **Library > Music** or **Videos**, select a media file.

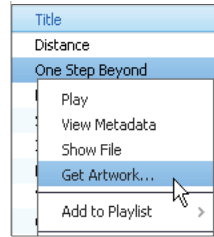
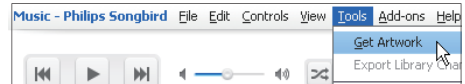
2 Right click on the file to select **View Metadata**.

↳ A metadata table appears for you to edit the information.

Get album artwork

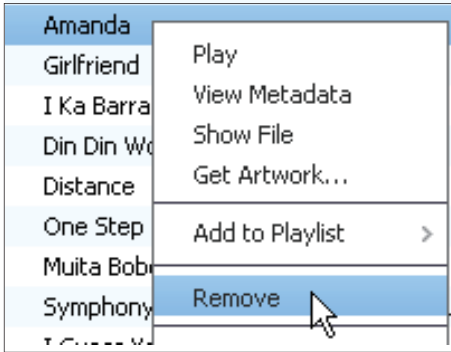
Artwork is sometimes available for music downloads. With **Philips Songbird**, you can insert artwork for songs.

After you sync the songs to some players, you can browse the media library by artwork.



- On **Philips Songbird**, select **Tools > Get Artwork**.
↳ Artwork is fetched for all titles in the library.
- Right click on selected titles, and select **Get Artwork**.
↳ Artwork is fetched for all selected titles.

Remove media files from the library



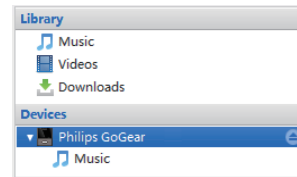
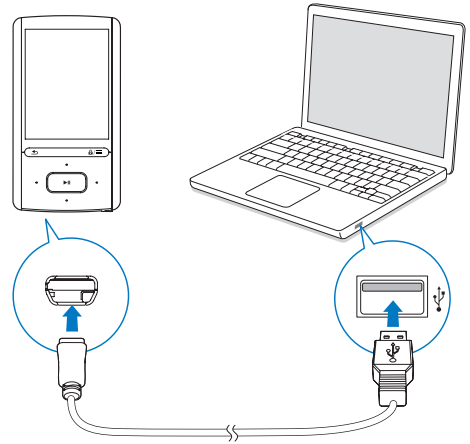
- 1 Right click on a media file. Select **Remove**.
- 2 Confirm as prompted.
 - ↳ The selected file is removed from the library and from all playlists. (By default, the file is only "removed", not "deleted". The file still exists in its original location on the computer or computer network.)

Tip

- To select multiple files, hold down the **Ctrl** button when you click on selections.
- To select multiple consecutive files, hold down the **Shift** button when you click on the first and last selections.

Sync the player with Philips Songbird

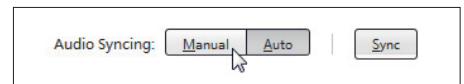
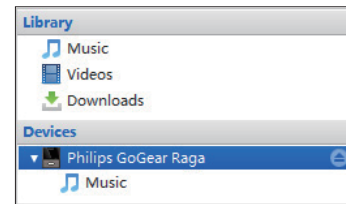
- 1 On the PC, launch **Philips Songbird**.
- 2 Connect the player to the PC by using a USB cable.
 - ↳ On **Philips Songbird**, the player is displayed when it is recognized by the PC.



Select auto or manual sync

The first time you connect the player to **Philips Songbird**, select auto sync as prompted. The player sync with **Philips Songbird** automatically. If you didn't select auto sync, you switch on the manual sync.

To select auto or manual sync,

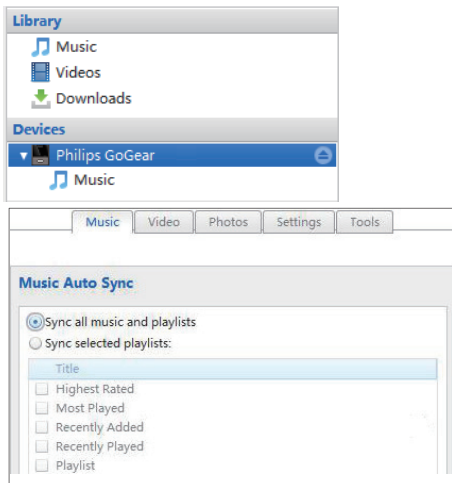


- 1 Select the player under **Devices**.
- 2 Select **Manual** or **Auto**.
- 3 To confirm the option, click **Apply**.

Auto sync

- If you have selected auto sync, auto sync starts automatically when you connect the player to a PC;
- Alternatively, select the player under **Devices**, and click **Sync**.

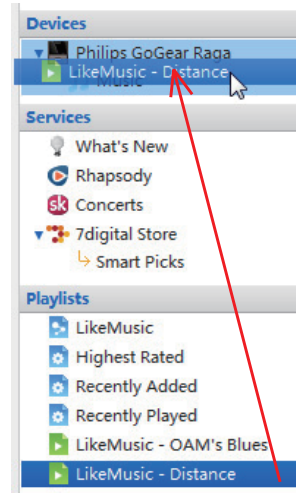
To select auto sync settings,



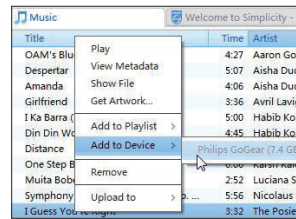
- 1 Select the player under **Devices**.
- 2 On the pop-up window, click the **Music** or **Videos** tab.
- 3 Click to select an option.

Manual sync

To manually transfer selected playlists,



- 1 Select playlists.
 - 2 Drag and drop the playlists to **ARIAZ**.
- To manually transfer selected media files,



- 1 On the Content pane, right click on a selected media file.
- 2 Select **Add to Device > ARIAZ**.
↳ Selected files are transferred to **ARIAZ**.

Tip

- To select multiple files at the same time, hold down the **Ctrl** button when you click on selections.

14 Update the firmware through Philips Songbird

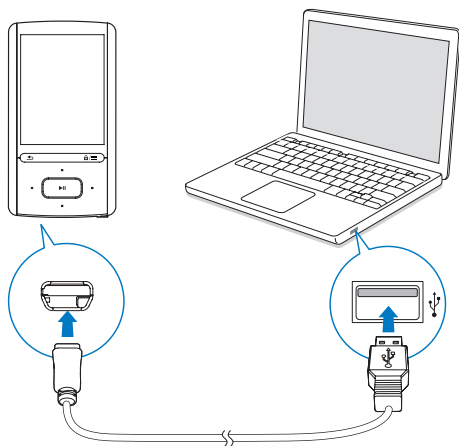
ARIAZ is controlled by an internal program called firmware. Newer versions of the firmware may have been released after you have purchased **ARIAZ**.

Through **Philips Songbird**, you can check for and install firmware updates for **ARIAZ** over the Internet.



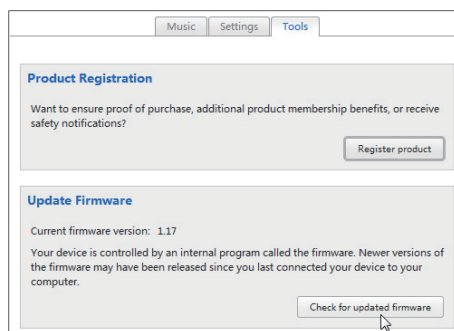
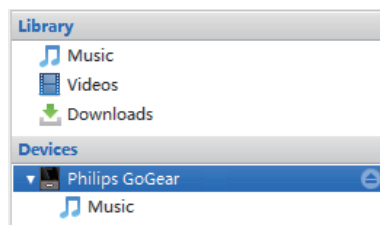
Tip

- Your music files are not affected by a firmware update.



- 1 Make sure that you have connected your PC to the Internet.
- 2 As shown, connect the **ARIAZ** to the PC by using a USB cable.
- 3 On the PC, launch **Philips Songbird**.
 - If necessary, click **Start > Programs > Philips > Philips Songbird**.

- 4 Click **ARIAZ** in the Player pane. Then, select **Tools > Check for updated firmware** in the pop-up window.
 - ↳ **Philips Songbird** checks for updates and installs new firmware from the Internet, if available.



- 5 Follow the on-screen instructions.
 - ↳ Downloading and installation of firmware update start automatically.
 - ↳ The **ARIAZ** restarts after the firmware is updated and is ready for use again.

Note

- Wait until the update is completed, then disconnect the **ARIAZ** from the computer.

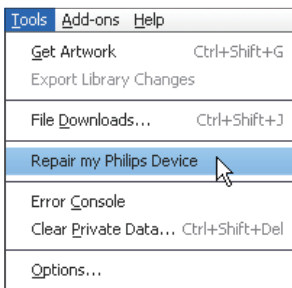
15 Repair the player through Philips Songbird

If **ARIAZ** is not working properly or the display freezes, you can reset it without losing data:

To reset ARIAZ?

- Insert a pen tip or other object into the reset hole located at the base of **ARIAZ**. Hold until the player shuts down.

If you fail to reset the player, repair the player through Philips Songbird:



- 1 On your PC, launch **Philips Songbird**.
- 2 In **Philips Songbird**,
 - select **Tools > Repair my Philips Device**;
 - select **ARIAZ** in the pop-up list.
- 3 Connect the player to the PC.
 - **Make sure that you follow the onscreen instructions on how to connect the player to the PC.**
- 4 Follow the onscreen instructions to complete the repair.



Tip

- After you repair the player, the CD-ROM partition and the **Philips Songbird** installer are removed from the player. More space is available on the player.

16 Technical data

Power

- Power supply: 520 mAh Li-ion polymer internal rechargeable battery
- Play time¹
Music: up to 25 hours (**SafeSound** on); up to 13 hours (**FullSound** on, **SafeSound** on); up to 12 hours (**FullSound** on); up to 25 hours (**FullSound** off)
Video (WMV): up to 5 hours
FM radio: up to 15 hours

PC Software

- Philips Songbird: to update firmware and transfer media

Connectivity

- Headphone 3.5 mm
- USB 2.0 High speed

Sound

- Channel separation: 45 dB
- Frequency Response: 80-18,000 Hz
- Output power: 2 x 2.4 mW
- Signal to noise ratio: > 84 dB

Audio playback

Supported formats:

- MP3
Bitrate: 8 - 320 kbps and VBR
Sampling rate: 8, 11.025, 16, 22.050, 32, 44.1, 48 kHz
- WMA(unprotected)
Bitrate: 5 - 320 kbps
Sampling rate: 8, 11.025, 16, 22.050, 32, 44.1, 48 kHz

Video playback

Supported formats:

- MJPEG (in .mp4), WMV

Picture display

Supported formats:

- JPEG, BMP

Storage media

Built-in memory capacity²:

- SA4ARA04 4GB NAND Flash
- SA4ARA08 8GB NAND Flash
- SA4ARA16 16GB NAND Flash

- SA4ARA32 32GB NAND Flash
- ## Media transfer³
- Songbird (sync)
 - Windows Explorer (drag and drop)

Display

- Color LCD 320 x 240 pixels



Note

- Specifications are subject to change without notice.
- ¹ Rechargeable batteries have a limited number of charge cycles. Battery life and number of charge cycles vary by use and settings.
- ² 1GB = 1 billion bytes; available storage capacity is less. Full memory capacity may not be available as some memory is reserved for the player. Storage capacity is based on 4 minutes per song and 128 kbps MP3 encoding.
- ³ Transfer speed depends on operating system and software configuration.

System requirements

- Windows® XP (SP3 or above) / Vista / 7
- Pentium III 800 MHz processor or higher
- 512 MB RAM
- 500 MB hard disk space
- Internet connection
- Windows® Internet Explorer 6.0 or later
- CD-ROM drive
- USB port

