

Register your product and get support at
www.philips.com/welcome

GoGear

SA3VBE04

SA3VBE08

SA3VBE16

SA3VBE32



EN User manual

PHILIPS

Contents

1	Important safety information	5
	General maintenance	5
	Recycling the product and the built-in battery	8

2	Your new VIBE	9
	What's in the box	9
	Software loaded on the player	9
	Files loaded on the player	9

3	Get started	10
	Charge power	10
	Switch the player on or off	10
	Automatic standby and shut-down	10

4	Overview	11
	Controls	11
	Home screen	11
	Navigate from the Home screen	12
	Select a theme	12
	Lock/unlock the keys	12
	Screen on/off	12

5	Sync with PC media library	13
	Install Philips Songbird	13
	Collect media files from the PC	14
	Set the watch folder	14
	Import media files	15
	Get contents from online sources	15
	Search online	16
	Play online	16
	Add to Philips Songbird	16
	Search in Philips Songbird	17
	Search by metadata	17
	Search by keyword	18
	Create playlists in Philips Songbird	18
	Create a playlist	18
	Generate LikeMusic playlists	19
	Save the play queue as a playlist	20
	Play a playlist	21
	Manage media files in Philips Songbird	21

Edit metadata	21
Get album artwork	21
Remove media files from the library	22
Sync the player with Philips Songbird	22
Select auto or manual sync	23
Auto sync	23
Manual sync	24

6	Music	25
	Find music on the player	25
	Find music by song information	25
	Find music by playlist	25
	Find music by file folder	25
	Superscroll	25
	Play music	26
	Play from the same collection	26
	Select play options	26
	Playlists	26
	Add songs to a playlist-on-the-go	27
	Remove songs from a playlist-on-the-go	27
	Delete songs from the player	27

7	Audiobooks	28
	Sync audio books to the player	28
	Install AudibleManager on the PC	28
	Download audiobooks to the PC	28
	Sync to the player	28
	Find audiobooks on the player	29
	Play audiobooks	29
	Use bookmarks	30
	Delete audiobooks from the player	30

8	Rhapsody	31
	Transfer from Rhapsody to the player	31
	Rate the songs	31
	Add songs to the music library	31
	Renew the subscription tracks	31

9	Videos	32
	Add videos to the player	32
	Find videos on the player	32
	Play videos	32
	Select brightness	32

Delete videos from the player	32
<hr/>	
10 Pictures	33
Add pictures to the player	33
Find pictures on the player	33
View pictures	33
Start a slideshow	33
Select play options	33
Delete pictures from the player	34
<hr/>	
11 FM radio	35
Tune in to radio stations	35
Listen to the FM radio	35
Store preset stations	36
<hr/>	
12 Folder view	37
<hr/>	
13 Settings	38
Play mode	38
Sound settings	38
Sleep timer	38
Display settings	38
Backlight timer	38
Screensaver	39
Date and time	39
Slideshow settings	39
Language	39
PC connection preference	40
Information	40
Rhapsody information	40
Format device	40
Factory settings	40
CD-ROM	41
<hr/>	
14 Update the firmware through Philips Songbird	42
<hr/>	
15 Repair the player through Philips Songbird	43
<hr/>	
16 Technical data	44
System requirements	44

Need help?

Please visit

www.philips.com/welcome

where you can access a full set of supporting materials such as the user manual, the latest software updates, and answers to frequently asked questions.

1 Important safety information

General maintenance

The translation of this document is for reference only.

In the event of any inconsistency between the English version and the translated version, the English version shall prevail.

Caution

- To avoid damage or malfunction:
- Do not expose the product to excessive heat caused by heating equipment or direct sunlight.
- Do not drop the product or allow objects to fall on your player.
- Do not allow the product to be submerged in water: Do not expose headphone socket or battery compartment to water; as water entering the set may cause major damage.
- Active mobile phones in the vicinity may cause interference.
- Back up your files. Ensure that you retain the original files you have downloaded to your device. Philips is not responsible for any loss of data if the product becomes damaged or not readable / legible.
- Manage (transfer, delete, etc.) your music files only with the supplied music software to avoid problems.
- Do not use any cleaning agents containing alcohol, ammonia, benzene, or abrasives as these may harm the product.

About operating and storage temperatures

- Operate in a place where temperature is always between 0 and 35°C (32 to 95°F)
- Store in a place where temperature is always between -20 and 45°C (-4 to 113°F).
- Battery life may be shortened in low temperature conditions.

Replacement parts/accessories:

Visit www.philips.com/support to order replacement parts/accessories.

Hearing Safety



Listen at a moderate volume:

Using headphones at a high volume can impair your hearing. This product can produce sounds in decibel ranges that may cause hearing loss for a normal person, even for exposure less than a minute. The higher decibel ranges are offered for those that may have already experienced some hearing loss.

Sound can be deceiving. Over time your hearing 'comfort level' adapts to higher volumes of sound. So after prolonged listening, what sounds 'normal' can actually be loud and harmful to your hearing. To guard against this, set your volume to a safe level before your hearing adapts and leave it there.

To establish a safe volume level:

Set your volume control at a low setting.

Slowly increase the sound until you can hear it comfortably and clearly, without distortion.

Listen for reasonable periods of time:

Prolonged exposure to sound, even at normally 'safe' levels, can also cause hearing loss.

Be sure to use your equipment reasonably and take appropriate breaks.

Be sure to observe the following guidelines when using your headphones.

Listen at reasonable volumes for reasonable periods of time.

Be careful not to adjust the volume as your hearing adapts.

Do not turn up the volume so high that you can't hear what's around you.

You should use caution or temporarily discontinue use in potentially hazardous situations.

Do not use headphones while operating a motorized vehicle, cycling, skateboarding, etc.; it may create a traffic hazard and is illegal in many areas.

Modifications

Modifications not authorized by the manufacturer may void user's authority to operate the product.

Copyright information

All other brands and product names are trademarks of their respective companies or organizations.

Unauthorized duplication of any recordings whether downloaded from the Internet or made from audio CDs is a violation of copyright laws and international treaties.

The making of unauthorized copies of copy-protected material, including computer programs, files, broadcasts and sound recordings, may be an infringement of copyrights and constitute a criminal offense. This equipment should not be used for such purposes.

The Windows Media and the Windows logo are registered trademarks of Microsoft Corporation in the United States and/or other countries.

Be responsible! Respect copyrights.



Philips respects the intellectual property of others, and we ask our users to do the same. Multimedia content on the internet may have been created and/or distributed without the original copyright owner's authorization.

Copying or distributing unauthorized content may violate copyright laws in various countries including yours.

Compliance with copyright laws remains your responsibility.

The recording and transfer to the portable player of video streams downloaded to your computer is intended only for use with public domain or properly licensed content. You may only use such content for your private, non-commercial use and shall respect eventual copyright instructions provided by the copyright

owner of the work. Such instruction may state that no further copies shall be made. Video streams may include copy protection technology that prohibits further copying. For such situations the recording function will not work and you will be notified with a message.

Data logging

Philips is committed to improving the quality of your product and enhancing the Philips user experience. To understand the usage profile of this device, this device logs some info / data to the non-volatile memory region of the device. These data are used to identify and detect any failures or problems you as a user may experience while using the device. The data stored, for example, will be the duration of playback in music mode, duration of playback in turner mode, how many times battery low was encountered, etc. The data stored do not reveal the content or media used on the device or the source of downloads. The data stored on the device are retrieved and used ONLY if the user returns the device to the Philips service center and ONLY to simplify error detection and prevention. The data stored shall be made available to user on user's first request.

Monkey's Audio decoder

- ① The Monkey's Audio SDK and source code can be freely used to add APE format playback, encoding, or tagging support to any product, free or commercial. Use of the code for proprietary efforts that don't support the official APE format require written consent of the author.
- ② Monkey's Audio source can be included in GPL and open-source software, although Monkey's Audio itself will not be subjected to external licensing requirements or other viral source restrictions.
- ③ Code changes and improvements must be contributed back to the Monkey's

Audio project free from restrictions or royalties, unless exempted by express written consent of the author.

- ④ Any source code, ideas, or libraries used must be plainly acknowledged in the software using the code.
- ⑤ Although the software has been tested thoroughly, the author is in no way responsible for damages due to bugs or misuse.

If you do not completely agree with all of the previous stipulations, you must cease using this source code and remove it from your storage device.

FLAC decoder

Copyright (C) 2000,2001,2002,2003,2004,2005, 2006,2007,2008,2009 Josh Coalson

Redistribution and use in source and binary forms, with or without modification, are permitted provided that the following conditions are met:

- Redistributions of source code must retain the above copyright notice, this list of conditions and the following disclaimer.
- Redistributions in binary form must reproduce the above copyright notice, this list of conditions and the following disclaimer in the documentation and/or other materials provided with the distribution.
- Neither the name of the Xiph.org Foundation nor the names of its contributors may be used to endorse or promote products derived from this software without specific prior written permission.

THIS SOFTWARE IS PROVIDED BY THE COPYRIGHT HOLDERS AND CONTRIBUTORS "AS IS" AND ANY EXPRESS OR IMPLIED WARRANTIES, INCLUDING, BUT NOT LIMITED TO, THE IMPLIED WARRANTIES OF MERCHANTABILITY AND FITNESS FOR A PARTICULAR PURPOSE

ARE DISCLAIMED. IN NO EVENT SHALL THE FOUNDATION OR CONTRIBUTORS BE LIABLE FOR ANY DIRECT, INDIRECT, INCIDENTAL, SPECIAL, EXEMPLARY, OR CONSEQUENTIAL DAMAGES (INCLUDING, BUT NOT LIMITED TO, PROCUREMENT OF SUBSTITUTE GOODS OR SERVICES; LOSS OF USE, DATA, OR PROFITS; OR BUSINESS INTERRUPTION) HOWEVER CAUSED AND ON ANY THEORY OF LIABILITY, WHETHER IN CONTRACT, STRICT LIABILITY, OR TORT (INCLUDING NEGLIGENCE OR OTHERWISE) ARISING IN ANY WAY OUT OF THE USE OF THIS SOFTWARE, EVEN IF ADVISED OF THE POSSIBILITY OF SUCH DAMAGE.

XPAT XML Parser

Copyright (c) 1998, 1999, 2000 Thai Open Source Software Center Ltd

Permission is hereby granted, free of charge, to any person obtaining a copy of this software and associated documentation files (the "Software"), to deal in the Software without restriction, including without limitation the rights to use, copy, modify, merge, publish, distribute, sub-license, and/or sell copies of the Software, and to permit persons to whom the Software is furnished to do so, subject to the following conditions:

The above copyright notice and this permission notice shall be included in all copies or substantial portions of the Software. THE SOFTWARE IS PROVIDED "AS IS", WITHOUT WARRANTY OF ANY KIND, EXPRESS OR IMPLIED, INCLUDING BUT NOT LIMITED TO THE WARRANTIES OF MERCHANTABILITY, FITNESS FOR A PARTICULAR PURPOSE AND NON-INFRINGEMENT. IN NO EVENT SHALL THE AUTHORS OR COPYRIGHT HOLDERS BE LIABLE FOR ANY CLAIM, DAMAGES OR OTHER LIABILITY, WHETHER IN AN ACTION OF CONTRACT, TORT OR OTHERWISE, ARISING FROM, OUT OF OR

IN CONNECTION WITH THE SOFTWARE
OR THE USE OR OTHER DEALINGS IN THE
SOFTWARE.

Recycling the product and the built-in battery

Your product is designed and manufactured with high quality materials and components, which can be recycled and reused. Never dispose of your product with other household waste. Please inform yourself about the local rules on the separate collection of electrical and electronic products and batteries. The correct disposal of these products helps prevent potentially negative consequences on the environment and human health. Please visit www.recycle.philips.com for additional information on a recycling center in your area.

Caution

- Removal of the built-in battery invalidates the warranty and can destroy the product.



Philips VIBE

Notice for the USA

This equipment has been tested and found to comply with the limits for a Class B digital device, pursuant to part 15 of the FCC Rules. These limits are designed to provide reasonable protection against harmful interference in a residential installation. This equipment generates, uses, and can radiate radio frequency energy and, if not installed and used in accordance with the instruction manual, may cause harmful interference to radio communications. However, there is no guarantee that interference will not occur in a particular installation. If this equipment does cause harmful

interference to radio or television reception, which can be determined by turning the equipment off and on, the user is encouraged to try to correct the interference by one or more of the following measures:

- Relocate the receiving antenna.
- Increase the separation between equipment and receiver.
- Connect the equipment into an outlet on a circuit different from that to which the receiver is connected.
- Consult the dealer or an experienced radio/TV technician for help.

Notice for Canada

This Class B digital apparatus complies with Canadian ICES-003.

The set complies with the FCC-Rules, Part-15 and with 21 CFR 1040.10. Operation is subject to the following two conditions:

- This device may not cause harmful interference, and
- This device must accept any interference received, including interference that may cause undesired operation.

2 Your new VIBE

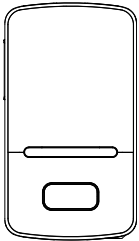
On **VIBE**, you can do the following:

- Play music;
- Watch videos;
- View pictures;
- Listen to audiobooks;
- Tune in to the FM radio (available with some versions).

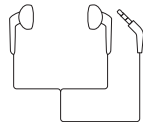
What's in the box

Check that you have received the following items:

Player



Earphones



USB cable



Quick start guide



Note

- The images serve as reference only. Philips reserves the right to change color/design without notice.

Software loaded on the player

VIBE comes with the following software:

- **Philips Songbird** (helps you update the firmware of the player, and manage your media library on a PC and the player).

Files loaded on the player

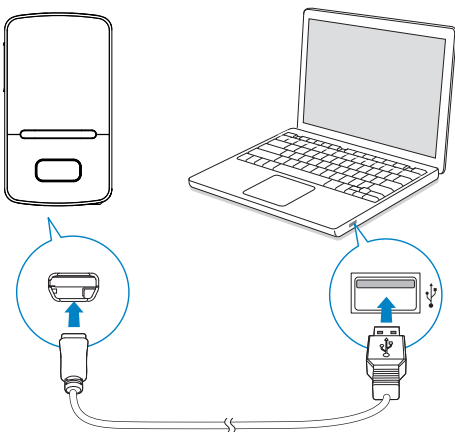
The following files are loaded on **VIBE**:

- User manual
- Frequently asked questions

3 Get started

Charge power


VIBE has a built-in battery that can be charged through the USB port of a computer. As shown, connect the VIBE to a PC by using the USB cable.



Note

- When you connect VIBE to a computer, you are briefly prompted to select: **[Charge & transfer]** or **[Charge & play]**.
- VIBE automatically applies **[Charge & transfer]**, if no new selection is made.

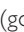
Battery level indication

- When the battery is low, the low battery screen is displayed repeatedly.
- When the charging process is complete,  is displayed.



Note

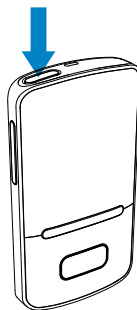
- Rechargeable batteries have a limited number of charge cycles. Battery life and number of charge cycles vary by use and settings.

To conserve battery power and increase the play time, do the following on VIBE:

- Set the backlight timer to a low value (go to  > **[Display settings]** > **[Backlight timer]**).

Switch the player on or off

Press and hold  /  until the player is switched on or off.

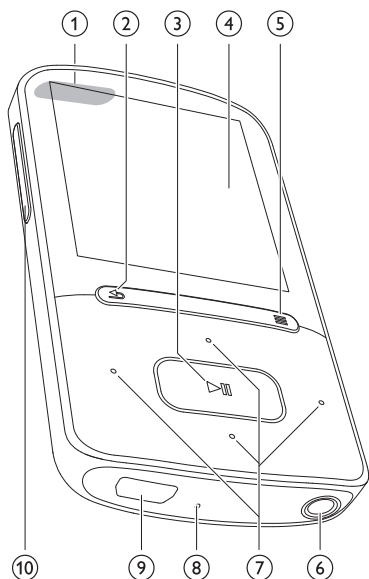


Automatic standby and shut-down

The player has an automatic standby and shut-down feature that can save battery power. After 10 minutes in idle mode (no play, no button is pressed), the player switches off.

4 Overview

Controls



- ① press and hold: switch on/off the player
press: lock/unlock all buttons
- ② press: back one level
press and hold: return to the Home screen
- ③ press: select options, or start/pause/resume play
- ④ display
- ⑤ show options menu
- ⑥ 3.5 mm headphone connector

⑦ on the list of options:
press: skip to the previous/next option

on the play screen:
press: skip to the next/previous option
press and hold: search within current file

⑧ **RESET** press the hole by using the tip of a ball pen when the screen does not respond to the pressing of keys

⑨ USB connector for power charging and data transfer

⑩ press: increase/decrease the volume
press and hold: increase/decrease the volume quickly

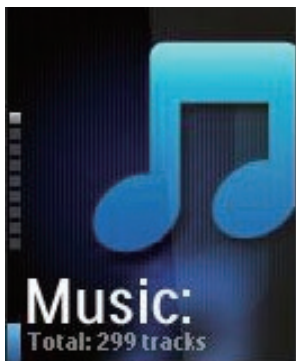
Home screen



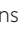


Menu	Mode	To
	Music	play audio files
	Rhapsody*	listen to channel lists that you download and transfer through the Rhapsody software
	Video	watch videos
	Pictures	view pictures
	FM radio	tune in to the FM radio (available with some versions)
	Folder view	view files in folders
	Settings	customize the settings of VIBE
	Now playing	show current play screen

Note

- * Rhapsody channels becomes part of the Home screen after you connect VIBE to a computer that has the Rhapsody software installed. Rhapsody channels services require an active Rhapsody account and is available in some regions only.

Navigate from the Home screen





- From the Home screen, you can access functional menus by pressing the navigation buttons  /  and .
- To go back to previous screens, press  repeatedly; or, press and hold  to return to the Home screen.

Switch between the Home screen and play screen

On the Home screen,

During music play or radio play,


- Press .
- Alternatively, press  and select **[Now playing]** or **[Last played]**.

On the play screen,

- Press and hold .


Select a theme

To select a theme for the display,

- On the Home screen, press  and select **[Theme]**.

Lock/unlock the keys

When the player is on, use the lock to prevent accidental operation.

- Briefly press  to lock or unlock the keys.
 - ↳ All buttons except the volume keys are locked and the display shows a lock icon.

Screen on/off

To save power, the screen switches off automatically after the pre-defined time duration if

- no new action is taken on **VIBE**; and
- a value is selected in *** > [Display settings] > [Backlight timer]**.

To exit the power-saving mode

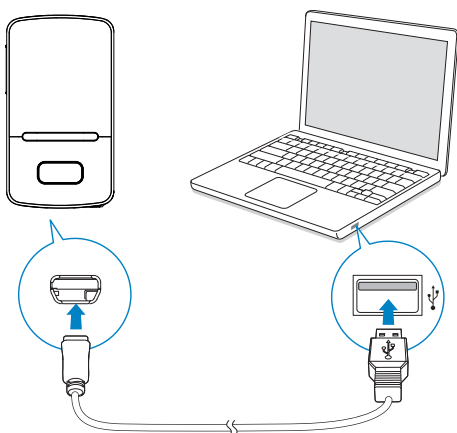
- Press any key.

5 Sync with PC media library

With **Philips Songbird**, you can do the following:

- Manage your media collections on a PC;
- Sync **VIBE** with your PC media library;
- Register **VIBE** on www.philips.com/welcome;
- Update the firmware of VIBE (see 'Update the firmware through Philips Songbird' on page 42);
- Repair the VIBE (see 'Repair the player through Philips Songbird' on page 43).

Install Philips Songbird



Install Philips Songbird for the first time

When you connect **VIBE** to a PC for the first time, a pop-up window appears:

- 1 Select your language and country.

- 2 Follow the on-screen instructions to complete the installation.

Note

- The installation requires you to agree to the license terms.

If the pop-up window is not displayed automatically:

- 1 On the player, make sure that you have selected the following options:
 - In *** > [PC connection preference]**, select **[MSC]**;
 - In *** > [CD installer]**, select **[Enable]**.
- 2 On the PC, select **My Computer** (Windows XP / Windows 2000) / **Computer** (Windows Vista / Windows 7).
 - ↳ The **Philips Songbird** drive is displayed.
- 3 To start installation, double click the **Philips Songbird** drive.

Note

- The installation requires you to agree to the license terms.
- After the installation, the PC connection changes to the MTP mode.

Collect media files from the PC

Set the watch folder

Create a central folder

You may wish to have all media files automatically added to your library when you copy them to a folder. Creating a central folder is recommended. In **Philips Songbird**, set the central folder as the watch folder. Each time you launch **Philips Songbird**, songs are added to/ removed from **Philips Songbird** as they are on the central folder.

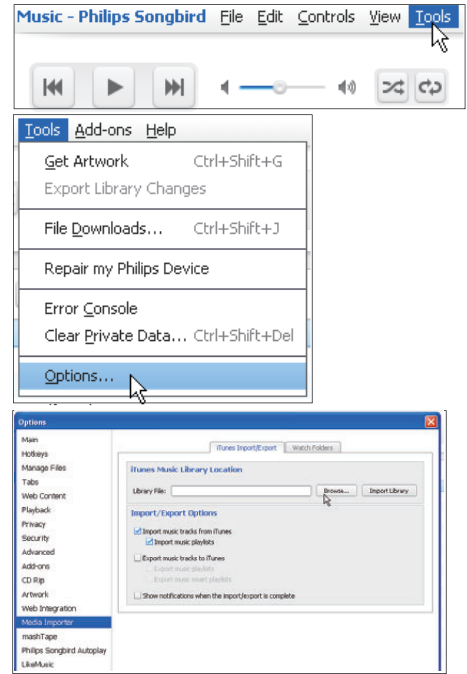
On the PC, create a central folder to save all media files, for example, D:\Songbird media.

First-time launch

The first time you launch **Philips Songbird** on a PC, do the following as prompted to import existing media files into **Philips Songbird**:

- Select the iTunes media folder to import an existing iTunes library;
- Select the central folder to scan and import the existing media files.
 - ↳ The central folder is set as the watch folder of **Philips Songbird**.

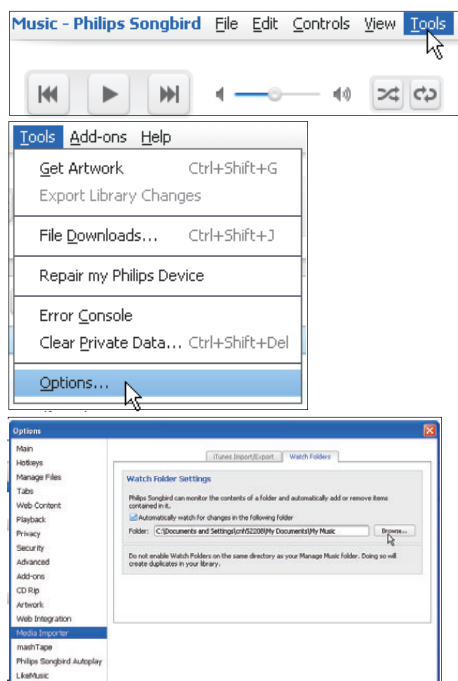
To set iTunes media folder



- 1 On **Philips Songbird**, go to **Tools** > **Options...**
- 2 Select **Media Importer**, and then the **iTunes Importer** tab.
- 3 Verify your library location and options.
- 4 Click the **Import Library** button next to the library location.
 - ↳ The software imports the iTunes library into **Philips Songbird**.

To set the watch folder

In **Philips Songbird**, set the watch folder as follows:



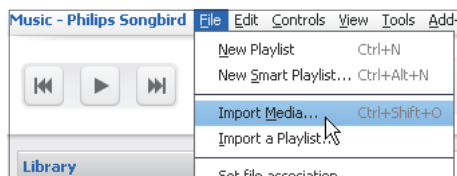
- 1 Select **Tools > Options**.
- 2 In **Options**, select **Media Importer**. Then, select the **Watch Folders** tab.
- 3 In **Watch Folders**, tick the check box as shown.
- 4 Click **Browse**, and select the central folder (e.g. D:\Songbird media) as the watch folder.
 - ↳ In **Philips Songbird**, media files are added or removed as they are in the central music folder.

Import media files

Import media files from other folders

In **Philips Songbird**,

- go to **File > Import Media** to select folders on the PC.
 - ↳ Media files are added under **Library**.
- or, go to **File > Import a playlist** to select playlists on the PC.
 - ↳ Media files are added under **Playlists**.



Get contents from online sources

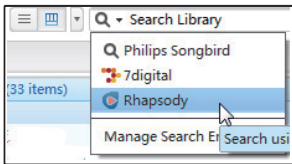
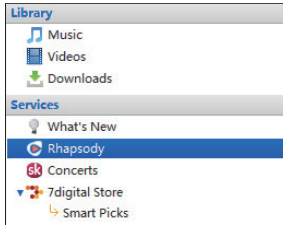
You can access and purchase content from online sources. Find the available online services under **Services** on the source selector pane.

Note

- Before you download or purchase content from online services, subscribe to the online service and log in to your account.
- Some of the services are available in certain countries.

Search online

- 1 Select an online service:
 - Select an option under **Services**;
 - Alternatively, in the search box, click the down arrow to select an online service.



↳ You enter the webpage of the online source.

- 2 Search for your media file.
 - If necessary, use the search box to enter a keyword.

Play online

Note

- Before you play music from **Rhapsody**, subscribe to the service and log in to your account.

On the **Rhapsody** webpage,

- To play the entire playlist, click ► **Play All**;
- To play a song, select the song and click ► next to it.

Key Tracks		Key A
Play/Add	Title	
▶ +	Play/Add All	
▶ +	Christmastime Is Here (Instrumental)	
▶ +	Christmas Eve / Sarajevo 12/24	
▶ +	Linus & Lucy	

Add to Philips Songbird

To transfer songs from **Rhapsody** to **Philips Songbird**, add the songs to a playlist in Philips Songbird (see 'Create playlists in Philips Songbird' on page 18).

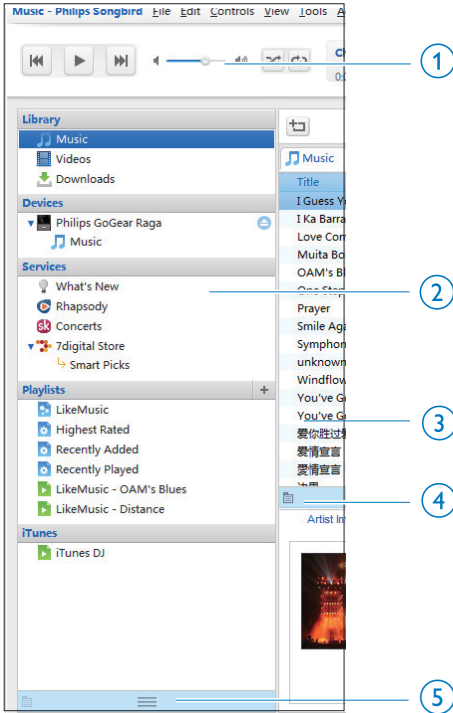
On the **Rhapsody** webpage,

- To add the entire playlist to **Philips Songbird**, click + **Add All**;
- To add a song to **Philips Songbird**, select the song and click + next to it.

Key Tracks		Key A
Play/Add	Title	
▶ +	Play/Add All	
▶ +	Christmastime Is Here (Instrumental)	
▶ +	Christmas Eve / Sarajevo 12/24	
▶ +	Linus & Lucy	

Search in Philips Songbird

Philips Songbird is structured as follows:



- ① **Player pane:** Click the buttons to play media files in the media library of Philips Songbird.
- ② **Source selector pane:** Click to select a source of contents; Click ►/▼ to show or hide the sub-sources.
 - **Library:** media library of Philips Songbird;
 - **Devices:** player that is connected to the PC;
 - **Services:** online media sources;
 - **Playlists:** Playlists that you create or generate in the media library of Philips Songbird.
- ③ **Contents pane:** View contents in current source of contents.

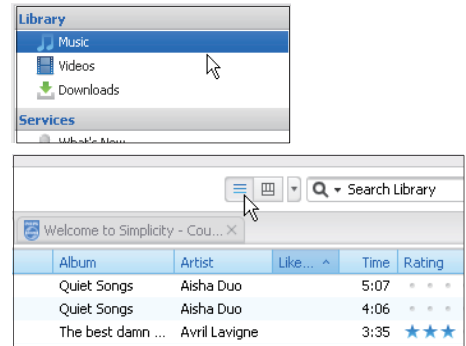
- ④ **Information pane:** From the Internet sources, MashTape can collect information available about the media file being played.
- ⑤ **Artwork pane:** Drag the up arrow to show the pane.

Search by metadata

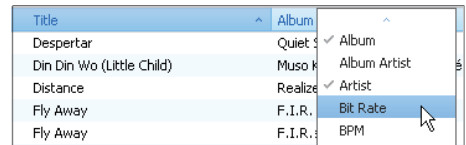
In the media library of **Philips Songbird**, media files are sorted by metadata. To search for media files by metadata, click the icon to select the list or filter pane view.

List view

In the list view, media files are listed by metadata.



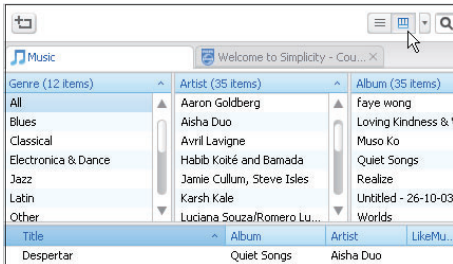
To select what metadata to show,



- 1 In **Library > Music** or **Videos**, right click on the bar of metadata tags.
↳ A list of metadata tags appears.
- 2 Click on the tag that you want to show on the metadata bar.

Filter pane view

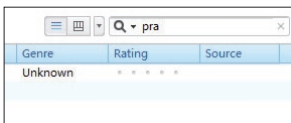
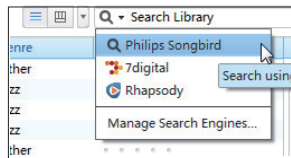
In the filter pane view, media files can be filtered by three metadata tags.



To select a filter pane,

- 1 Right click on the bar of metadata tags.
↳ A list of metadata tags appears.
- 2 Click on the tag that you want to show on the metadata bar.

Search by keyword



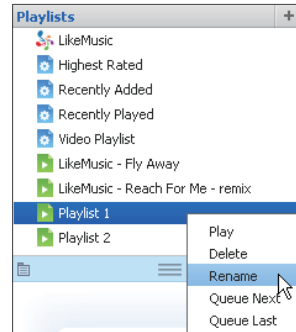
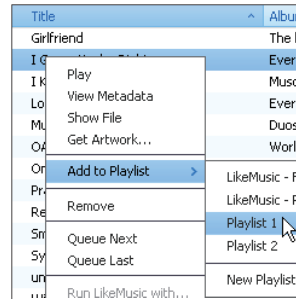
- 1 In the search box, click the down arrow to select **Philips Songbird** as the source of content.
- 2 Enter the keyword in the search box.
- 3 Press the **Enter** key.
↳ You start the search in the library.

Create playlists in Philips Songbird

With a playlist, you can manage and sync your songs as needed.

Create a playlist

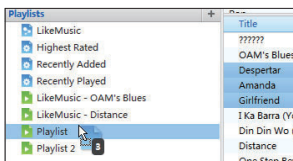
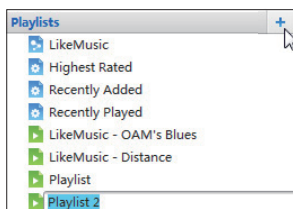
Select songs that you want to play. Add the songs to a playlist.



- 1 In **Library > Music**, select songs.
 - To select multiple songs, hold down the **Ctrl** button when you click songs.

- 2 To add the songs to a playlist:
- Right click on the songs, and select **Add to Playlist**;
 - Select a playlist;
 - ↳ The songs are added to the playlist.
 - To create a playlist, select **New Playlist**.
 - ↳ A new playlist is created for the songs.
 - ↳ Under **Playlists**, name the playlist as needed.

Alternatively,
Create a playlist. Add selected songs to the playlist.



- 1 Under **Playlists**, click + to create a playlist.
 - ↳ A new playlist is created.
- 2 Name the new playlist as desired.
- 3 Drag and drop media files to the playlist.



Tip

- To drag and drop multiple files at the same time, hold down the **Ctrl** button when you click on selections.

Generate LikeMusic playlists

Based on the **LikeMusic** analysis, a playlist can be generated from a seed song.

LikeMusic analyzes songs in your library and, based on their music characteristics, creates relationships between them. These relationships help **LikeMusic** to create playlists of songs that sound great together.

When you import songs into the music library of **Philips Songbird**, the **LikeMusic** analysis starts. For the song that completes the analysis, the **LikeMusic** icon lights up; For the song that cannot complete the analysis, the icon remains gray.

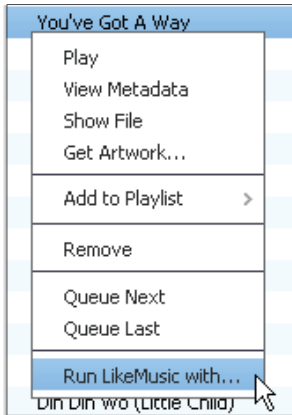


Select a seed song

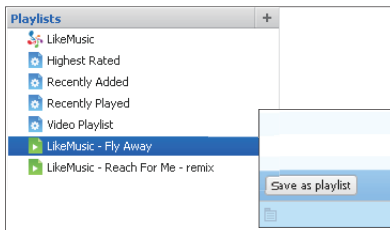
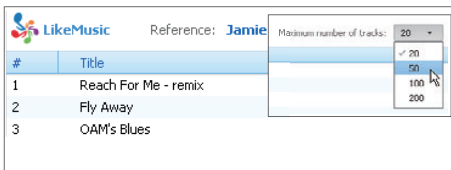
Make sure that the seed song has completed the **LikeMusic** analysis.

- In **Library > Music**, double click the blue **LikeMusic** icon of the song;

Alternatively,



- In **Library > Music**, right click on a song and select **Run LikeMusic with**.
↳ A **LikeMusic** playlist is displayed in the **LikeMusic** page.



Select the maximum number of songs in the playlist

- As shown, select a number in the drop-down list.

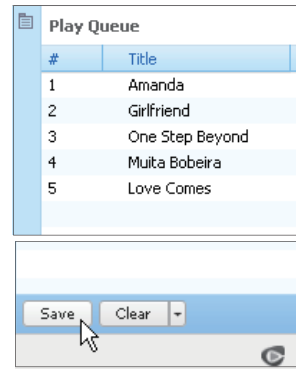
Save the LikeMusic playlist

- As shown, click **Save as playlist** in the **LikeMusic** page.
↳ The **LikeMusic** playlist is saved under **Playlists**.

Save the play queue as a playlist

Create a play queue

- Drag and drop songs or playlists to the **Play Queue** pane.



Save the play queue as a playlist

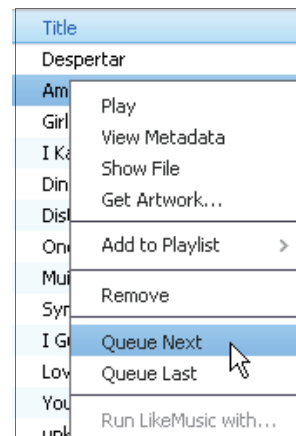
1 Click **Save**.

- ↳ The play queue is saved as a playlist under **Playlists**.

2 Under **Playlists**, name the playlist as needed.

Add songs to the top or end of the play queue

- To add songs to the top, right click on the options and select **Queue Next**;
- To add songs to the end, right click on the options and select **Queue Last**.



Play a playlist

- 1 To play the entire playlist, right click on the playlist and select **Play**.
 - To start play from a song, double click on the song.
- 2 To select play options, click buttons on the player pane.

Manage media files in Philips Songbird

Edit metadata

By editing file information (metadata or ID3 tag), you can have media files sorted automatically by song title, artist, album, and other information.

After you sync the media files to the player, you can browse the media library by metadata.

Title	Album	Artist
Distance		S...
One Step Beyond		S...
Muita Bobeira		cia...
Symphony No. 3 in E-flat		ol...
I Guess You're Right		B ...

Play
View Metadata
Show File
Get Artwork...

- 1 In **Library > Music** or **Videos**, select a media file.
- 2 Right click on the file to select **View Metadata**.
 - ↳ A metadata table appears for you to edit the information.

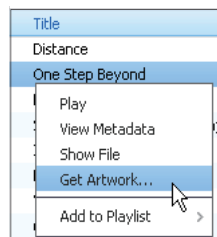
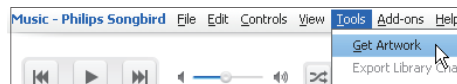
Note

- To sort the music files from **Rhapsody** as needed, edit the metadata in the media library of **Philips Songbird**. The song information remains unchanged on the play screen.

Get album artwork

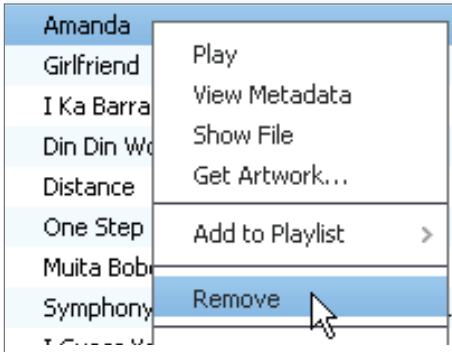
Artwork is sometimes available for music downloads. With **Philips Songbird**, you can insert artwork for songs.

After you sync the songs to some players, you can browse the media library by artwork.



- On **Philips Songbird**, select **Tools > Get Artwork**.
 - ↳ Artwork is fetched for all titles in the library.
- Right click on selected titles, and select **Get Artwork**.
 - ↳ Artwork is fetched for all selected titles.

Remove media files from the library

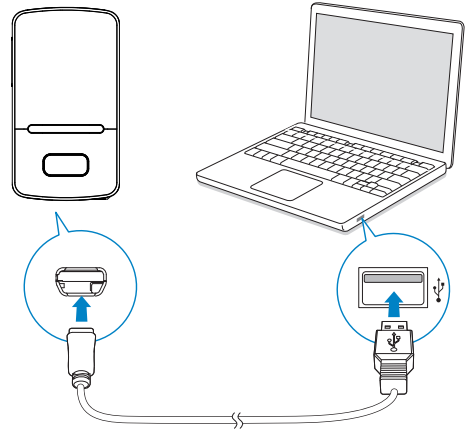


- 1 Right click on a media file. Select **Remove**.
- 2 Confirm as prompted.
 - ↳ The selected file is removed from the library and from all playlists. (By default, the file is only "removed", not "deleted". The file still exists in its original location on the computer or computer network.)

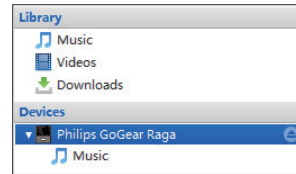
Tip

- To select multiple files, hold down the **Ctrl** button when you click on selections.
- To select multiple consecutive files, hold down the **Shift** button when you click on the first and last selections.

Sync the player with Philips Songbird



- 1 On the PC, launch **Philips Songbird**.
- 2 Connect the player to the PC by using a USB cable.
 - ↳ On **Philips Songbird**, the player is displayed when it is recognized by the PC.

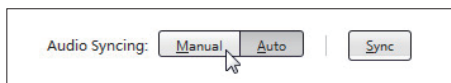
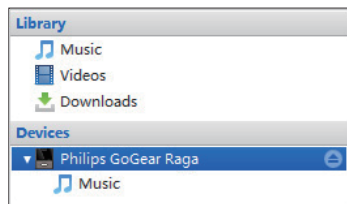


Select auto or manual sync

The first time you connect the player to **Philips Songbird**, select auto sync as prompted. The player sync with **Philips Songbird** automatically.

If you didn't select auto sync, you switch on the manual sync.

To select auto or manual sync,

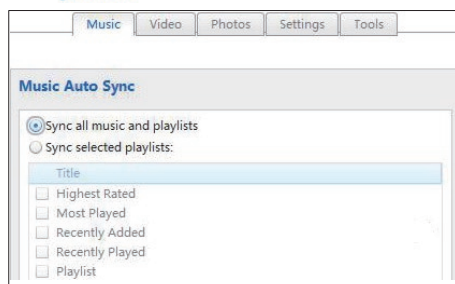
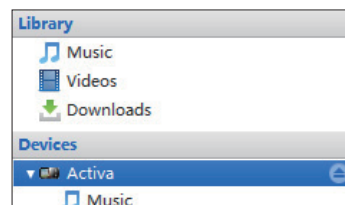


- 1 Select the player under **Devices**.
- 2 Select **Manual** or **Auto**.
- 3 To confirm the option, click **Apply**.

Auto sync

- If you have selected auto sync, auto sync starts automatically when you connect the player to a PC;
- Alternatively, select the player under **Devices**, and click **Sync**.

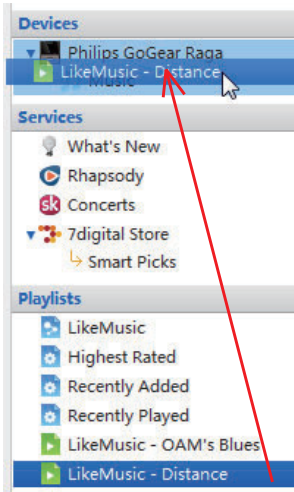
To select auto sync settings,



- 1 Select the player under **Devices**.
- 2 On the pop-up window, click the **Music** or **Videos** tab.
- 3 Click to select an option.

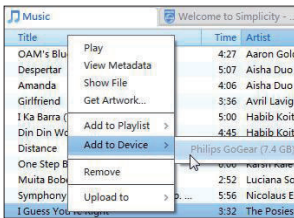
Manual sync

To manually transfer selected playlists,



- 1 Select playlists.
- 2 Drag and drop the playlists to **VIBE**.

To manually transfer selected media files,



- 1 On the Content pane, right click on a selected media file.
- 2 Select **Add to Device > VIBE**.
↳ Selected files are transferred to **VIBE**.

Tip

- To select multiple files at the same time, hold down the **Ctrl** button when you click on selections.

6 Music

Find music on the player

After you sync the player with your PC media library, find the music on the player.

Find music by song information

In **🎵**, songs are sorted by metadata or ID3 tag under different collections: **[All songs]**, **[Artists]**, **[Albums]**, or **[Genres]**.

[All songs]

- Songs are sorted by song title in alphabetical order.

[Artists]

- Songs are sorted by artist in alphabetical order;
- Under each artist, songs are sorted by album in alphabetical order.

[Albums]

- Songs are sorted by album in alphabetical order.

[Genres]

- Songs are sorted by genre, such as pop, rock.

Find music by playlist

In **🎵** > **[Playlists]**, find the playlist that you transfer from the PC media library.

Find music by file folder

In **📁**, find music by file folder.

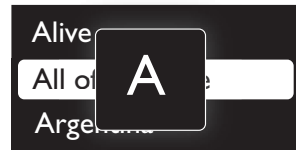
To organize music files by file folder,

- 1 Connect **VIBE** to a PC.
- 2 On the PC, under **My Computer** or **Computer**,
 - select **VIBE**, and create file folders.
- 3 On the PC, drag and drop music files to the file folders on the **VIBE**.
 - Alternatively, drag and drop file folders from the PC to **VIBE**.

Superscroll

In a list of options that are sorted by alphabet, **Superscroll** allows you to browse the options by initial.

- Press and hold **⏏** to start **Superscroll**.
 - ↳ On the screen, you can see the initials of current options.



Play music

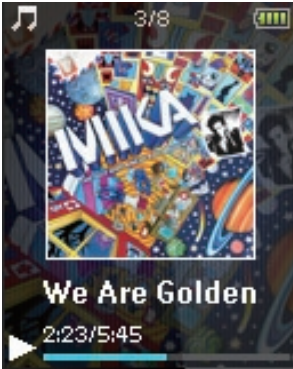
You can start play from a song, or play an entire album or artist.

To start play from a song,

- 1 Select a song.
- 2 Press ►|| to start play.
↳ Play starts from current song.

To play the entire album or artist,

- 1 Select an album or artist.
 - 2 Press ≡ > [Play all].
 - 3 Press ►|| to start play.
- On the play screen,



- Press ►|| to pause and resume play.
- To go to the previous screen, press ↶.
↳ The play screen returns a few seconds later.
- ↳ On the play screen, you can see the file information and play status.

To select a music file on the play screen,

- Repeatedly press ◀◀ / ▶▶.

To rewind or fast forward within current song,

- On the play screen, press and hold ◀◀ / ▶▶.

Play from the same collection

During the song play, you can switch to a collection the same as that of current song.

- 1 On the play screen, press ≡ and select [Play mode].
- 2 In [Play music from...], select [... this artist], [... this album], or [... this genre]. Press ►||.
↳ You start to play current artist, album, or genre.

To play all the songs on the player,

- 1 On the play screen, press ≡ and select [Play mode].
- 2 In [Play music from...], select [All songs]. Press ►||.

Select play options

On the play screen, press ≡ to select play options, such as play mode, sound settings, and sleep timer (see 'Settings' on page 38).



Playlists

On the players, you can find the following playlists:



- playlists that you transfer from the PC media library;
- three playlists-on-the-go for you to add songs on the player.

Add songs to a playlist-on-the-go

To add current song,



- 1 Select or play a song.
- 2 On the list of songs or play screen,
 - press  and select **[Add to playlist]**.
- 3 Select a playlist-on-the-go. Press .
 - ↳ You save current song to the playlist.

To add an album or artist,



- 1 Select an album or artist.
- 2 On the list of albums or artists,
 - press  and select **[Add to playlist]**.
- 3 Select a playlist-on-the-go. Press .
 - ↳ You save the album or artist to the playlist.

Remove songs from a playlist-on-the-go

Remove current song from a playlist


- 1 On the play screen, press  > **[Remove from Playlist]**.
- 2 Select a playlist-on-the-go. Press .
 - ↳ You remove current song from the selected playlist.

Remove all the songs in a playlist

- 1 In the list of playlists, press  and select **[Clear playlist]**.
- 2 Select a playlist-on-the-go. Press .
 - ↳ You remove all the songs from the playlist.

Delete songs from the player

To delete current song during play,

- On the play screen, press  and select **[Delete]**.
 - ↳ Current song is deleted from the player.

7 Audiobooks

Go to **⌘ > [Audiobooks]** to play books in audio formats that you have downloaded from www.audible.com.

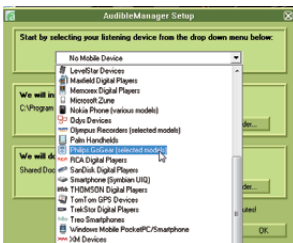
Sync audio books to the player

From www.audible.com, download and install the **AudibleManager** software on your PC. Through the software, you can

- download audiobooks from www.audible.com to your PC library of audio books;
- sync the audiobooks to your player.

Install AudibleManager on the PC

- 1 Connect your PC to the Internet.
- 2 From www.audible.com, download the **AudibleManager** software for MP3/ MP4 players.
- 3 Install the software on your PC:
 - On the setup screen, select **Philips GoGear (selected models)** from the drop-down list of listening devices;



- Follow onscreen instructions to complete the installation.

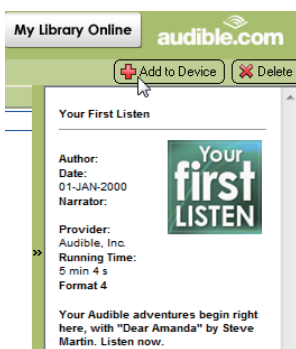
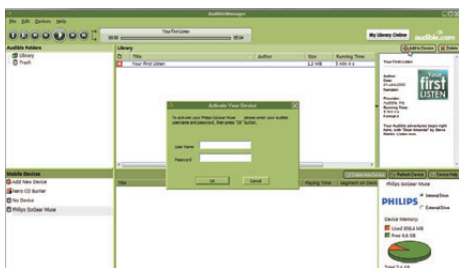
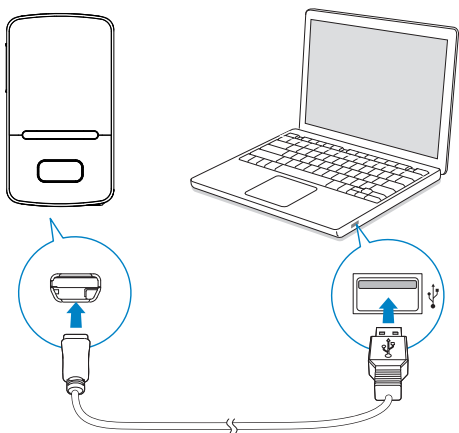
Download audiobooks to the PC

- 1 Connect your PC to the Internet.
- 2 Launch **AudibleManager** on your PC.
- 3 On **AudibleManager**, click the **My Library Online** button to connect to www.audible.com.
- 4 Select and download audio books:
 - Log in to your account with www.audible.com;
 - Download audio books in the format of **Ⓜ** or **Ⓜ**.
 - ↳ The downloaded books are automatically added to your library on **AudibleManager**.

Sync to the player

- 1 Launch **AudibleManager** on your PC.
- 2 Connect the player to the PC. Wait till the player is recognized by **AudibleManager**.
 - On the player, make sure that you have selected **[MTP]** in **⌘ > [PC connection preference]**.

- 3 On **AudibleManager**, click **Add to Device**.
- The first time you connect the player to **AudibleManager**, activate the player as prompted.



To check the audio books transferred to the player,

See the player pane on **AudibleManager**.

- If necessary, click **Refresh Device**.

Find audiobooks on the player

In **♪** > [**Audiobooks**], audiobook files are organized by book title or author:

[**Books**]

- Books are sorted by book title in alphabetical order.

[**Authors**]

- Books are sorted by author in alphabetical order.

Play audiobooks

- Select a book.
- Press **▶||** to start play.
 - On the play screen, you can see the book information and play status.

On the play screen,

- Press **▶||** to pause and resume play.
- To go to the previous screen, press **←**.


To skip titles or sections during play,

- On the play screen, press **≡** > [**Navigation mode**]. Select [**Titles**] or [**Section**].
- On the play screen, press **⏪** / **⏩**.


Use bookmarks

On an audiobook, you can add up to 10 bookmarks to the play time. Start play from the bookmarked play time as needed.


To add a bookmark,

- 1 On the play screen, press  and select **[Bookmarks] > [Add bookmark]**.
- 2 Select a location.
 - ↳ Current play time is added to the location in the list of bookmarks.


To play from a bookmarked play time,

- On the play screen, press  and select **[Bookmarks] > [Go to bookmark]**. Select an option.
 - ↳ Play starts from the selected play time.


To delete a bookmark,

- On the play screen, press  and select **[Bookmarks] > [Delete bookmark]**. Select an option.
 - ↳ You remove the play time from the list of bookmarks.

Delete audiobooks from the player

- On the play screen, press  > **[Delete Audiobook]**.
 - ↳ Current audiobook is deleted from the player.

8 Rhapsody



Go to  to play the **Rhapsody** channel lists that you have downloaded and transferred through the **Rhapsody** software.



Note





- The **Rhapsody** service is available in certain countries.

Transfer from Rhapsody to the player



- 1 Go to www.rhapsody.com to get the **Rhapsody** software.
- 2 Connect the player to a PC with the **Rhapsody** software installed.
- 3 Through the **Rhapsody** software, transfer channel lists to the player:
 - ↳ On the player,  is displayed on the Home screen.
 - ↳ On the player, find the channel lists under .




Rate the songs

Assign rating to the songs, or ban the songs that you don't want to listen to. You can customize the channel list as needed.

- 1 On the play screen, press  and select **[Rate track]**.
- 2 Press  /  to select the rating. Press  to confirm the option.

Add songs to the music library

Add the **Rhapsody** songs to . You can find and play the songs as you do in .

- 1 In , select a channel list.
- 2 Press  and select **[Add to music library]**.
 - ↳ The channel list is added to .



Renew the subscription tracks

With your **Rhapsody** subscription, you can play the subscription songs on the player for a period of time.

If the time period expires, do the following for renewal:

- 1 Make sure that your **Rhapsody** subscription is active;
- 2 On your PC, launch the **Rhapsody** software, and log in to your **Rhapsody** account.
- 3 Connect the player to your PC.

To check the subscription information on the player,

- In , press  > **[Subscription information]**.

9 Videos

Add videos to the player

You can add videos to the player in two ways:


- through Philips Songbird (see 'Sync with PC media library' on page 13),
- in Windows Explorer.

To transfer videos in Windows Explorer,


- 1 Connect **VIBE** to a computer.
- 2 On the PC, under **My Computer** or **Computer**,
 - select **VIBE**, and create file folders.
- 3 On the PC, drag and drop files to the file folders on the **VIBE**.
 - Alternatively, drag and drop file folders from the PC to **VIBE**.

Find videos on the player


Find videos by file name

- Go to 
 - ↳ Videos are listed by file name in alphabetical order.


Find videos by file folder

- Go to 
 - ↳ Videos are organized by file folder as on the PC.

Play videos

- 1 Select a video.
- 2 Press  to start play.
 - ↳ The video plays in the landscape view.



On the play screen,

- Press  to pause and resume play.





To select a video file on the play screen,

- Repeatedly press  / .


To rewind or fast forward within current video,

- On the play screen, press and hold  / .

Select brightness

- 1 On the play screen, press  and select **[Brightness]**.
- 2 Press  and  to select an option.
- 3 Press .

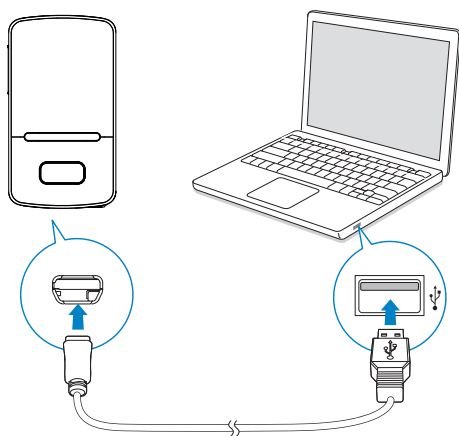
Delete videos from the player

- 1 Select or play a video.
- 2 On the list of videos or play screen,
 - press  and select **[Delete video]**.
 - ↳ Current video is deleted from the player.

10 Pictures


Add pictures to the player

- 1 Connect **VIBE** to a computer.
- 2 On the PC, under **My Computer** or **Computer**,
 - select **VIBE**, and create file folders.
- 3 On the PC, drag and drop files to the file folders on the **VIBE**.
 - Alternatively, drag and drop file folders from the PC to **VIBE**.




Find pictures on the player


Find pictures by file name

- Go to .
 - ↳ Pictures are listed by file name in alphabetical order.

Find pictures by file folder

- Go to .
 - ↳ Pictures are organized by file folder as on the PC.


View pictures

- Select a picture. Press  to view the picture in full screen.
 - ↳ The picture is displayed in the landscape view.


On the play screen,

- Press  /  to select a picture.

Start a slideshow

- When you view pictures in full screen, press  to start a slideshow.
 - ↳ Pictures play one by one.

Select play options

On the play screen, press  to select play options:

[Brightness] Select the brightness of the screen.

[Backlight timer] Select a value. After the selected time duration, the screen switches off automatically.


In **[Slideshow settings]**, select your options for slideshow:

[Time per slide] Select the time interval between two slides.

[Repeat] Play pictures in current folder repeatedly.

[Shuffle] Play pictures in current folder in random order.

Delete pictures from the player

- 1 Select or play a picture.
- 2 On the list of pictures or play screen,
 - press  and select **[Delete picture]**.
 - ↳ Current picture is deleted from the player.

11 FM radio

Note

- Plug in the supplied earphones when you tune in to radio stations. The earphones double as antenna. For better reception, move the earphone cable in different directions.

Tune in to radio stations

Auto tune

The first time you tune in to the radio, start Auto tune to search for stations.

- 1 From the Home screen, go to > [Auto tune].
↳ Up to 30 stations are stored as presets.
- 2 Press or repeatedly to select a preset station. Press to start play.

To select a preset on the play screen,

- Press or repeatedly.



Tip

- When you move to a new place (such as a new city or country), restart auto tune for better reception.

Manual tune

Use Manual tune to search for a frequency or station.

- 1 From the Home screen, go to > [Manual tune].
↳ The last played station starts to play.
- 2 On the play screen, press and hold or .
↳ You tune in to the next station from current frequency.
 - For fine tuning, press or repeatedly.

Listen to the FM radio





- 1 Go to > [Presets].
- 2 Press or to select a preset station. Press to start play.
 - Press to select another preset station from [Presets]. Press to start play.
 - On the play screen, press or to select a preset.
- 3 If necessary, press and hold or to tune in to a radio station.
 - For fine tuning, press or repeatedly.

To mute or unmute the radio play,



- On the play screen, press .

Store preset stations





On **VIBE**, you can store up to 30 preset stations.

- 1 Tune in to a radio station.
- 2 On the play screen, press  and select **[Save to preset]**.
- 3 Press  or  to select a location in the list of presets. Press .
 - ↳ Current station is saved to the location.


To remove current preset station,

- 1 On the play screen, press  and select **[Remove preset]**.
 - ↳ In the list of presets, current station is selected.
- 2 Press . Select **[Yes]**.
 - ↳ Current station is removed from the list of presets.

To remove selected preset stations,

- 1 In the list of presets, press  or  to select a station.
- 2 Press  and select **[Clear preset]**.
 - ↳ In the list of presets, the station is selected.
- 3 Press . Select **[Yes]**.
 - ↳ The selected station is removed from the list of presets.

To remove all preset stations,

- 1 On the list of presets, press  > **[Clear all presets]**.
- 2 Select **[Yes]**.
 - ↳ All the stations are removed from the list of presets.

12 Folder view

Go to ■ to view and play media files from the media library on the player.

Music: for music files that you sync to the player through **Philips Songbird**;

Video: for video files that you sync to the player through **Philips Songbird**;

Playlists: for playlists that you sync to the player, and the playlists-on-the-go that you create on the player.

SERVICE: for the audiobooks that you sync to the player through **AudibleManager**, or the

Rhapsody songs that you sync to the player through the **Rhapsody** software.

Recordings: for *FM radio recordings that you make on the player.

To find files transferred in Windows Explorer,

- Locate the files as you organized in Windows Explorer on the PC.



Note

- *The feature of FM radio recording is available with some versions only. Refer to the onscreen menu of the player to find out which features are available to you.

13 Settings

In *****, select your options for the player.

- 1 Press / to select an option.
- 2 Press to confirm.

Play mode

In **[Play mode]**, select play modes for music play:
[Play music from...]

switches to a collection the same as that of current song

[Repeat]

[Repeat 1] repeats current song.

[Repeat all] repeats all songs in current folder.

[Shuffle]

[On] plays all songs in current folder in random order.

If both **[Repeat all]** and **[Shuffle]** are activated,

- All songs in current folder are repeated in random order.

Sound settings

[FullSound] Restores the sonic details that music compression loses (e.g. MP3, WMA).

[Equalizer] Defines sound settings as desired.

Note

- Equalizer is deactivated when you select **FullSound**.

Sleep timer

Switch on the sleep timer. The **VIBE** can switch off automatically after a certain time duration.

- In **[Sleep timer] > [Set sleep timer...]**, select an option. Press .
↳ After the selected time duration, the device is switched off automatically.

After the sleep timer is switched on,

- Select ***** > **[Sleep timer]**;
- Alternatively, on the music play screen, press > **[Sleep timer]**.
↳ You can see the time left before the player is switched off.

Display settings

[Brightness] Adjusts the brightness of the screen.

[Theme] Selects the theme for the display.

Backlight timer

The screen enters the idle mode, if no new action is taken on the player. After the pre-defined time duration, the idle screen is switched off automatically. To save battery power, select a low value for the time duration.

To set the time duration

- 1 From the Home screen, select ***** > **[Display settings] > [Backlight timer]**.
- 2 Select a time duration.
↳ After the selected time duration, the idle screen is switched off automatically.

Tip

- For power-saving purpose, select a low value.





To exit the power-saving mode

- Press any key.

Screensaver

If you have selected a screensaver, the screensaver appears on the idle screen after the pre-defined time duration.

To select a screensaver

- 1 From the Home screen, select  > [Display settings] > [Screensaver].
- 2 In [Screensaver], press  /  and  to select an option:

[None]	shows blank screen.
[Digital clock]	shows time in digits.
[Album art]	shows the CD cover of current song or last played song, if available.
[Screen off]	switches off the screen.
[Demo mode]	shows major features of the player.

To exit the screensaver








- Press any key.

Date and time








To set the clock

- Press  /  and  to select an option:

[Time settings]

[Set time format]	selects a 12-hour or 24-hour clock
[Set time]	press  /  repeatedly, or press and hold  /  to enter digits; press  /  to select the position of entries; press  to confirm.

[Date settings]

[Set date format]	selects a date format
[Set date]	press  /  repeatedly, or press and hold  /  to enter digits; press  /  to select the position of entries; press  to confirm.

Slideshow settings

[Time per slide]	selects play time for each slide.
[Repeat]	plays all slides repeatedly, if activated.
[Shuffle]	plays all slides in random order, if activated.

Language

You can change the language selection in [Language].

PC connection preference

In **[PC connection preference]**, select how the player is connected to a PC. The player allows the access by a PC through USB Mass Storage Class (MSC), or Media Transfer Protocol (MTP).

[MSC]	*allows the player to also work as Philips Songbird drive. Click the Philips Songbird drive to start the program installation on the PC.
[MTP]	during the sync to the player, allows copyright-protected music to be converted to playable formats through Philips Songbird .



Tip

- *Make sure that you select **[Enable]** in * > **[CD installer]**.

Information

In **[Information]**, learn the following information about the player:

[Player information]

[Model:]	full product name Check the full product name when updating firmware from the support website.
[Firmware version:]	current firmware version Check the firmware version when updating firmware from the support website.
[Support site:]	web site that provides support for the player

[Disk space]

[Free space:]	space available
[Total space:]	memory size
[Songs]	space that songs occupy
[Pictures]	space that pictures occupy
[Videos]	space that videos occupy

[File type supported]

[Music]	supported types of music files
[Pictures]	supported types of picture files
[Videos]	supported types of video files

Rhapsody information

If you have synced to your player the channel lists from **Rhapsody**, find the subscription information in **[Rhapsody information]**. Renew the subscription tracks when the time expires.

Format device

Format the player. You remove all the data that are stored on the player.

- Select **[Format device]**, and then, select **[Yes]** as prompted.

Factory settings

In **[Factory settings]**, restore the player to factory settings. Files transferred to the player are retained.

CD-ROM

If you have selected **[MSC]** in *** > [PC connection preference]**, the **[CD installer]** options are displayed.

In **[CD installer]**, select **[Enable]** to allow the player to work as **Philips Songbird** drive.

Double click on the drive to start the program installation on the PC.



Tip

- After you repair the player, the CD-ROM partition and Philips Songbird installer are removed from the player (see 'Repair the player through Philips Songbird' on page 43). More space is available on the player.

14 Update the firmware through Philips Songbird

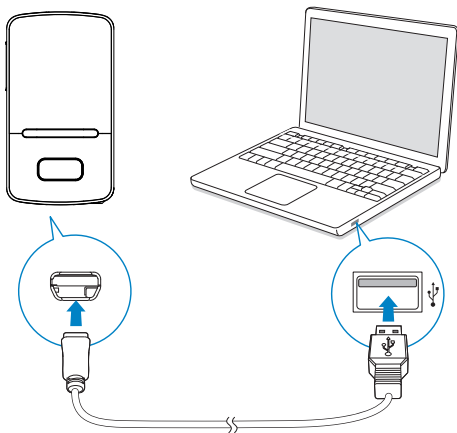
VIBE is controlled by an internal program called firmware. Newer versions of the firmware may have been released after you have purchased VIBE.

Through **Philips Songbird**, you can check for and install firmware updates for VIBE over the Internet.



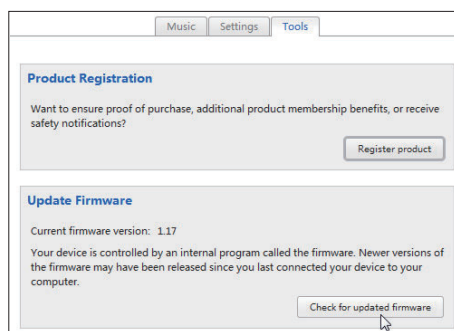
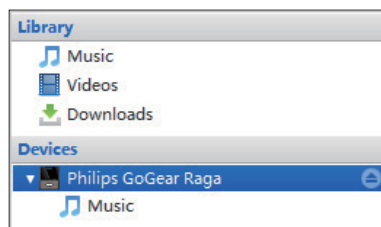
Tip

- Your music files are not affected by a firmware update.



- 1 Make sure that you have connected your PC to the Internet.
- 2 As shown, connect the VIBE to the PC by using a USB cable.
- 3 On the PC, launch **Philips Songbird**.
 - If necessary, click **Start > Programs > Philips > Philips Songbird**.

- 4 Click **VIBE** in the Player pane. Then, select **Tools > Check for updated firmware** in the pop-up window.
 - ↳ **Philips Songbird** checks for updates and installs new firmware from the Internet, if available.



- 5 Follow the on-screen instructions.
 - ↳ Downloading and installation of firmware update start automatically.
 - ↳ The **VIBE** restarts after the firmware is updated and is ready for use again.

Note

- Wait until the update is completed, then disconnect the VIBE from the computer.

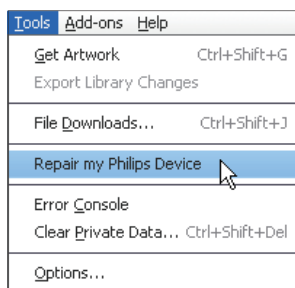
15 Repair the player through Philips Songbird

If VIBE is not working properly or the display freezes, you can reset it without losing data:

To reset VIBE?

- Insert a pen tip or other object into the reset hole located at the base of VIBE. Hold until the player shuts down.

If you fail to reset the player, repair the player through Philips Songbird:



- 1 On your PC, launch **Philips Songbird**.
- 2 In **Philips Songbird**,
 - select **Tools > Repair my Philips Device**;
 - select **VIBE** in the pop-up list.
- 3 Connect the player to the PC.
 - **Make sure that you follow the onscreen instructions on how to connect the player to the PC.**
- 4 Follow the onscreen instructions to complete the repair.

Tip

- After you repair the player, the CD-ROM partition and the **Philips Songbird** installer are removed from the player. More space is available on the player.

16 Technical data

Power

Power supply: 290 mAh Li-ion polymer internal rechargeable battery

Play time¹

- music (.mp3): up to 25 hours (**FullSound** off); up to 13 hours (**FullSound** on)

- video (.mp4): up to 5 hours

- FM radio: up to 12 hours

Software

Phillips Songbird: to update firmware and transfer³ music

Connectivity

Headphone 3.5 mm

USB 2.0 High speed

Sound

Channel separation: > 45 dB

Frequency Response: 80 - 18,000 Hz

Output power: 2 x 2.4 mW

Signal to noise ratio: > 84 dB

Audio playback

Supported formats:

Bit rates	Sampling rates
-----------	----------------

MP3:

8 - 320 kbps and VBR	8, 11.025, 16, 22.050, 32, 44.1, 48 kHz
----------------------	---

WMA:

5 - 320 kbps	8, 11.025, 16, 22.050, 32, 44.1, 48 kHz
--------------	---

FLAC:

up to 1.1 Mbps	48 kHz
----------------	--------

APE:

up to 1.3 Mbps	48 Khz
----------------	--------

Video playback

Supported formats:

MJPEG (in .mp4)

Picture display

Supported formats:

JPEG

BMP

Storage media

Built-in memory capacity²:

SA3VBE04 4GB NAND Flash

SA3VBE08 8GB NAND Flash

SA3VBE16 16GB NAND Flash

SA3VBE32 32GB NAND Flash

Display

Color LCD 128 x 160 pixels



Note

- ¹ Rechargeable batteries have a limited number of charge cycles. Battery life and number of charge cycles vary by use and settings.
- ² 1GB = 1 billion bytes; available storage capacity is less. Full memory capacity may not be available as some memory is reserved for the player. Storage capacity is based on 4 minutes per song and 128 kbps MP3 encoding.
- ³ Transfer speed depends on operating system and software configuration.

System requirements

- Windows® XP (SP3 or above) / Vista / 7
- Pentium III 800 MHz processor or higher
- 512 MB RAM
- 500 MB hard disk space
- Internet connection
- Windows® Internet Explorer 6.0 or later
- CD-ROM drive
- USB port

