

# User Manual

EN

User manual

1



**PHILIPS**

# Need help?

1. Look at our Support Centre website: [www.philips.com/support](http://www.philips.com/support)
2. Call our Customer Care helpline in your country:

Country	Helpdesk	Tariff / min	Keep ready
China	4008 800 008	Local Tariff	Date of Purchase, Model number and Serial number
Hong	2619 9663	Local tariff	Date of Purchase, Model number and Serial number
Korea	02 709 1200	Local tariff	Date of Purchase, Model number and Serial number

<b>2</b>	<b>Your new player</b>
2	Accessories
3	Register your product
3	Overview of controls and connections
<b>5</b>	<b>Getting Started</b>
5	Install
5	Connect
6	Transfer
7	Enjoy
<b>8</b>	<b>Music mode</b>
8	Music Playback
<b>9</b>	<b>Recordings</b>
9	Microphone recordings
<b>10</b>	<b>Settings</b>
<b>11</b>	<b>Firmware Manager</b>
11	Install Firmware Manager
11	Update Firmware
12	Recover Firmware
<b>14</b>	<b>Important Safety Information</b>
<b>17</b>	<b>Specifications</b>

# Your new player

Congratulations on becoming a new owner of this player.

With your new player you can enjoy the following:

- **Digital Audio Player** - supports MP3 and WMA format.
- **Voice Recorder** - provides a synchronous voice recording function. Recorded files will be stored in WAV format.
- **A-B Section Repeat** - enables users to repeat a particular section during normal playback.
- **EQ effect** - you are able to select one of the EQ modes to enhance your music listening experience.
- **USB Storage Device** - allows users to store data in the player. (The memory capacity depends on the model you bought.)

## Accessories

Please check that all the following accessories are included when you open the packing box. If any of the items are damaged or missing, please immediately contact the vendor where you purchased the player.



FM radio headphones



USB Cable  
(A male to mini B male)



3 Neck straps

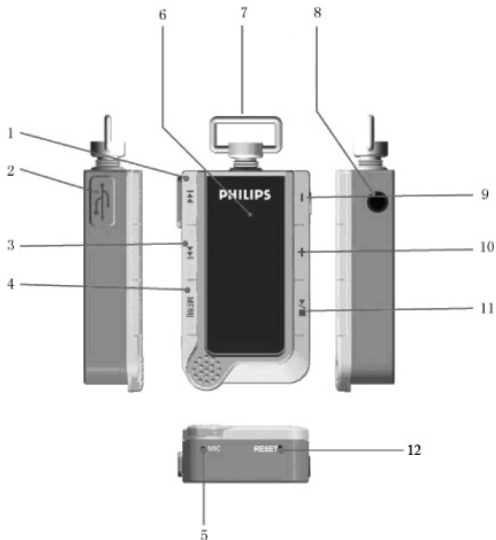


CD with software and user manual

## Register your product

We strongly recommend you that you register your product in order to gain access to free upgrades. To register your product, please go to [www.philips.com/register](http://www.philips.com/register) so that we can inform you as soon as new updates become available.

## Overview of controls and connections



1	⏮	Press to select options in the menu. During playback, press to go to the previous track, or press and hold to rewind a track.
2	USB	USB connector.
3	⏭	Press to select items in the menu. During playback, press to go to the next track. Press and hold to rewind a track.
4	Menu	In music or voice mode, long press to enter the main menu. In the main menu, short press to confirm or enter the sub-menu. In music or voice mode, short press to enter A-B repeat mode.
5	MIC	Built-in microphone.
6	Display	Status and information is shown in this window.
7	Neck Strap Holder	You can tie a strap here.
8	In-ear headphone	Plug the supplied in-ear headphones in here.
9	Volume Down	During playback, press to decrease volume level.
10	Volume Up	During playback, press to increase volume level.
11	▶	Press to play/pause a selected track and press again to resume. When turned off, press once to power on; when turned on, hold for 2 seconds to power off.
12	Reset	In case the player suddenly shuts down and will not power on again, insert a sharp object into the reset hole until the player powers down.

## Install

The player package includes a CD. Insert the CD into your CD-ROM drive, and the installation program will start automatically. Follow the on screen instructions to install the software. The CD contains the following:



- The Philips Firmware Manager allows you to update or recover your player.
- User Manual and Frequently Asked Questions
- Adobe Acrobat Reader

Adobe Acrobat Reader is a free software program that allows you to view and print Portable Document Format (PDF) files. To read the players User Manual, you have to install Adobe Acrobat Reader.

## Connect

### Charging the Battery

The player comes with a rechargeable battery. To charge the battery, follow the instructions below:

1. On the top of the player you see a mini USB (B type, female) port.
2. Plug the mini USB (B type, male) end of the supplied USB cable to the player, and the other end to your computer.
3. The player will start to charge as soon as it is connected with your computer. While the player is recharging, you will see the  icon in the display. When the battery is fully charged, you will see the  icon. The built-in battery takes 2 hours to charge 80-percent, and 2.5 - 3 hours to fully charge.
4. Safely disconnect the player from your computer.

## Battery Status



Charge the battery when necessary. Refer to the figure above to know the battery's status.

## Transfer

Your player appears as a USB mass storage in Windows Explorer. You can organize files and transfer music to your player during USB connection.

1. Click and highlight one or more of songs to transfer between your player and your computer.
2. Use drag and drop actions to complete your transfer.

## Disconnecting your player safely

After managing files using a PC, follow these steps to safely remove the player:

1. When a USB device is connected to a computer, an icon appears in the task bar. Double click the icon to display the Safely Remove Hardware dialog box. You can find all USB devices connected to the computer in the display. To remove the player, close all the related programs. Select **USB Mass Storage Device** and click the **Stop** button.
2. When the **Stop a Hardware device** screen appears, select **USB Mass Storage Device** and click **OK**.
3. When the "Safe to Remove Hardware" message appears, and you can remove the device safely.



## Enjoy

### Power On

Before any operations can be performed, you have to first turn on the device. Follow the steps below to turn on the player.

1. Press **▶||** once.
2. The screen will display the Philips Logo.
3. After the Philips logo appears, the device is ready to use.

### Power Off

Once the device is turned on, you can turn it Off in any mode, except in record mode. Follow the steps below to turn Off your player.

1. In any mode, except for record mode, press and hold **▶||** for about 2 seconds.
2. The screen will display "BYE BYE".
3. When the screen turns dark, the device is turned Off.

### Navigate the menu

The player has an intuitive menu navigation system to guide you through the various functions.

1. Long press the Menu key to enter the Main Menu. In the Main Menu, press **◀◀/▶▶** to select a function.
2. Stop at the function needed, and press the Menu key to select it.
3. The submenu for the selected function appears.

# Music Mode

## Music Playback

The player supports MP3 and WMA formats. Follow the steps below to play music.

1. In the Main Menu, press **◀◀ / ▶▶** to select the Music option and then press **Menu** to enter Music mode.
2. Press **◀◀ / ▶▶** to browse the files on the player.
3. Select a music file, and then press **▶||** to begin playback.

Basic operations	Controls to press
Go to the next song	Press <b>▶▶ </b>
Go to the previous song	Press <b> ◀◀</b>
Pause music	Short press <b>▶  </b> during music playback
Stop music	Long press <b>▶  </b> during music playback
Rewind/Fast-forward	Press and hold <b>◀◀ / ▶▶ </b>
Volume control	Press the Volume <b>+/-</b>

## A-B repeat

1. While playing, press **Menu** to identify the start point A and the LCD displays “A”.
2. Press **Menu** again to identify the end point B and LCD displays “A-B”. The Player will now repeat the selected segment.
3. Press **Menu** again to exit A-B repeat mode.

**Note:** Refer to the Transfer Songs section to transfer music to make sure all MP3 info is imported correctly.

## Microphone Recording

The player has a built-in Microphone, so you can make voice recordings.

1. In the Main Menu, press **◀◀ / ▶▶** to select the Record option, and press **Menu** to enter the recording mode.
2. The recording will start immediately.
3. You can pause recording by pressing **▶||**; press **Menu** to exit the Record mode and return to the Main Menu. The message is now recorded and can be played in the Voice Mode.

## Voice

1. In the Main Menu, press **▶▶** to select the Voice option and then press **Menu** to enter Voice mode.
2. The LCD Screen will display how many recordings are stored.
3. Press **◀◀ / ▶▶** to select recorded files and then press **▶||** to listen to them.
4. If there are no voice files, the LCD will display “No Files”.

## Delete

1. In the Main Menu, choose Delete by pressing the **◀◀ / ▶▶** and then press **Menu** to enter Delete mode.
2. Use **◀◀ / ▶▶** to select Delete Music, Delete Voice or Exit and then press **Menu** to confirm.
3. Press **◀◀ / ▶▶** to select the file you want to delete and press **Menu** to enter confirmation mode.
4. Press **▶||** to confirm deletion or press **Menu** to return to Delete mode.

# Settings

From the Settings Menu you can adjust all the options and adjust the player to meet your needs.

1. Long press **Menu** to enter the Main Menu.
2. Press **◀◀ / ▶▶** to select the Settings option.
3. Press **Menu** to enter.
4. Press **◀◀ / ▶▶** to browse through the various options and press **Menu** to confirm your selection.
5. Press **Menu** to go out from the current setting. Press **◀◀ / ▶▶** to select Exit from the Main Menu and press **Menu** to return to Play Mode.

Settings	Further Options
EQ	Normal / Rock/ Jazz / Pop / Classical
Play Mode	Normal / Repeat One / Repeat All / Random / Shuffle All / Intro
Contrast	10 contrast levels
Power Set	1 Min. / 2 Min. / 5 Min. / 10 Min. / Disabled
Backlight	0 - 60 Seconds
Backlight Color	Color 1 - 7 / Auto
Record Set	Rec. quality / Low / Mid / High / Exit
Language	English / Simplified Chinese / Traditional Chinese

## About

1. Select the Settings option in the Main Menu and press **Menu** to enter.
2. Press **◀◀ / ▶▶** to select the About option and then press **Menu** to enter.
3. You can read the device's information on the screen.

Your player is controlled by an internal program called firmware. With **Philips Firmware Manager**, you can update and restore your player with a few simple clicks.

## Install Firmware Manager

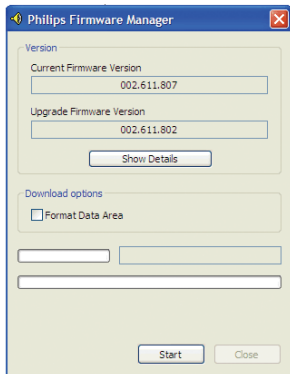
1. Insert the supplied CD into the CD-ROM drive of your computer.
2. Follow the onscreen instructions to begin and complete the installation.

## Update Firmware

Your player is controlled by an internal program called Firmware. We recommend to regularly check [www.philips.com](http://www.philips.com) (enter your product number to find the relevant information) for new upgrades. You can see the current version of firmware on your player by selecting the About function from the Main Menu.

To upgrade your player, please follow instructions below:

1. If you installed the “Philips Firmware Manager” from the CD-ROM before, then remove it from your computer by going to the Start menu, select the “Philips Firmware Manager” and select Uninstall.
2. Download the new “Philips Firmware Manager” from the website.
3. Connect the player to your computer using the USB cable.
4. Select “Philips Firmware Manager” from the Start/Programs menu. The following window appears.



5. Once "Philips Firmware Manager" has detected your player, click "Start" to update your firmware.
6. Disconnect the player safely from your computer.

## Recover Firmware

If your player hangs or does not function anymore, first try to reset it by inserting a sharp object into the reset hole of the player until it powers down. If this does not help, try to recover the player with the "Philips Firmware Manager":

**Important!**

All the content on your player will be erased during the recovery operation. Therefore, please back up your files before recovering your player.

1. Launch the “Philips Firmware Manager” on your PC from Start > Programs > Philips Firmware Manager.
2. Press and hold ►|| on your player.
3. Keep pressing ►|| while you connect your player with the PC using the USB cable.
4. You will see a progress bar on your computer screen. Only release ►|| after this progress bar has finished.
5. Now your player enters the recovery mode. Wait until the “Philips Firmware Manager” screen appears.
6. Click “Start” to update the firmware and fully recover your player.
7. When the update is finished, safely disconnect the player from your computer.

# Important safety information

## General maintenance

To avoid damage or malfunction:

- Do not expose the player to excessive heat caused by heating equipment or direct sunlight.
- Do not drop your player or allow objects to fall on your player.
- Do not allow your player to be submersed in water. Do not expose the headphone socket or battery compartment to water; as water entering the player may cause major damage.
- Do not use any cleaning agents containing alcohol, ammonia, benzene, or abrasives as these may harm the player.
- Active mobile phones in the vicinity may cause interference.
- Backup your files. Please ensure that you retain the original files you have downloaded to your device. Philips is not responsible for any loss of data if the product becomes damaged or not readable/usable.

## About operating and storage temperatures

- Operate in a place where temperature is between -10 and 45° C (32 to 95°F)
- Store in a place where temperature is between -20 and 60°C (-4 to 113°F)
- Battery life may be shortened in low temperature conditions.

Listen to music at a moderate volume. Using the headphones at high volume can impair your hearing.



Important (for models supplied with headphone):

Philips guarantees compliance with the maximum sound power of its players as determined by relevant regulatory bodies only with the original model of provided headphones.

In case the headphones included need replacement, we recommend that you contact your retailer to order a model identical to that of the original, provided by Philips.

### **Traffic safety**

Do not use the headphones while driving or cycling as you may cause an accident.

### **Copyright information**

All other brands and products names are trademarks of their respective companies or organizations.

Unauthorized duplication of any recordings whether downloaded from the internet or made from audio CDs is violation of copyright laws and international treaties.

The making of unauthorized copies of copy-protected material, including computer programs, files, broadcasts and sound recordings, may be an infringement of copyrights and constitute a criminal offence. This equipment should not be used for such purposes.



### **Disposal of your old product**

Your product is designed and manufactured with high quality materials and components, which can be recycled and reused.

Please act according to your local rules and do not dispose of your old products with your normal household waste. The correct disposal of your old product will help prevent potential negative consequences to the environment and human health.

### **Modification**

Modification not authorized by the manufacturer may void user authority to operate on this product.

## Specifications of the player

Dimension (W x D x H)	50*30*13mm
Weight	
Memory	SA200X: 512Mb, SA20XX; 1GB
Music /Voice format	MPEG1/2/3 WMA / WAV
Operating Temperature	-10~35°C
LCD module	96x 26 pixel LCD display with LED backlight
Voice Recording	Record format: WAV
I/O Input	1. Stereo Audio-out jack 2. USB interface
EQ	Jazz, Classical, Rock, Pop, Normal
A-B repeat	Supported
Folder function	Supported
Interface Language	English, Simplified Chinese, and Traditional Chinese
Earphones	Stereo output: 5MW + 5MW
Battery Life	About 8 hours



Be responsible  
Respect copyrights

Specifications are subject to change without notice.  
Trademarks are the property of Koninklijke Philips Electronics N.V.  
Or their respective owners

2006 © Koninklijke Philips Electronics N.V. All right reserved.

[www.philips.com](http://www.philips.com)

wk6085



Printed in China