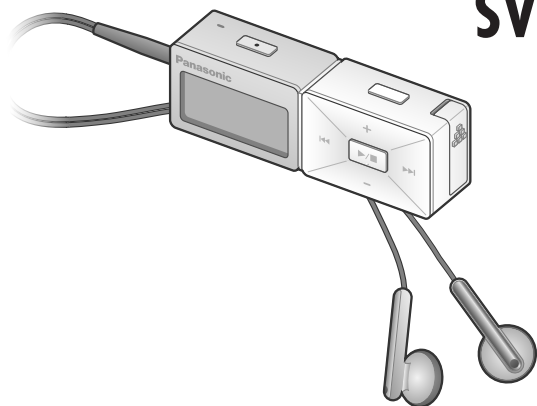


Operating Instructions Digital Audio Player

Model No. **SV-MP710V**
SV-MP720V



Dear Customer

Thank you for purchasing this product. Before connecting, operating or adjusting this product, please read the instructions completely. Please keep this manual for future reference.

Caution

This unit is not waterproof and should not be exposed to excessive moisture.

Note "EB" on the packaging indicates the United Kingdom.

EG EB En

Matsushita Electric Industrial Co., Ltd.

Web site: <http://www.panasonic.co.jp/global>

RQTT0685-B
M0305SF0

Supplied accessories

Use the numbers indicated in parentheses when asking for replacements parts. "As of March 2005"

□ **1 AC Adaptor** For the United Kingdom (NOJZCD000004) For Continental Europe (NOJZCD000008)

□ **1 Rechargeable battery with case**
Recommended replacement rechargeable battery:
ZBRP-BP65HE (Nickel-metal hydride rechargeable battery)

□ **1 Pair of stereo earphones** (LOBAB0000188)

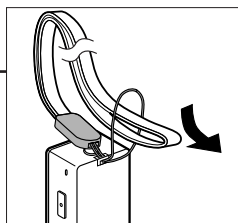
□ **1 USB Cable** (K1HA05AD0003)

□ **1 CD-ROM** (USB Driver)

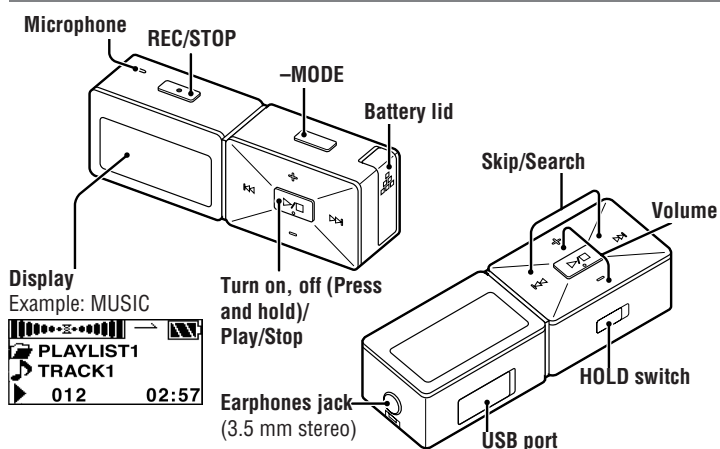
□ **1 Neck lanyard** (RFAT0006-Q)

Caution:

Take care when using the neck lanyard. If used improperly, it can be a choking hazard.



Location of Controls



- Windows Media Player (Version 9.0) Free download from <http://www.microsoft.com/downloads/>
- Supports playback of MP3 and WMA (DRM) music files
- Built-in microphone for voice recording
- Built-in FM tuner with recording function
- Portable data storage device (Plugs directly to your PC)
- Language learning with repetition and comparison.
- Total play list (MUSIC, FM RADIO, IC RECORDER) can contain up to 383 tracks.

These tables show the mode menu items available in the MUSIC, LEARN, FM RADIO, IC RECORDER and SYSTEM modes.

MUSIC

Mode	Options
	CONCERT 3D WEAK/ NATURAL/ STRONG/ 3D SET
SOUND	EQ SETTING NORMAL/ ROCK/ JAZZ/ POP/ CLASSIC/ USER DEFINE
PLAY	NORMAL/ ALL-REP/ ONE-REP/ RANDOM
INFO.	Information (Artist/ File format/ Bit Rate)
ERASE	SINGLE TRACK/ PLAYLIST/ ALL ERASE

FM RADIO

Mode	Options
AUTO PRESET	Freq. set/ Channel set
BAND STEP	50 kHz/ 100 kHz/ 200 kHz

LEARN

Mode	Options
PLAY	NORMAL/ ALL-REP/ ONE-REP
REPEAT SET	TIME/ TRACE/ T.TIME
SPEED	LOW-NOR
ERASE	SINGLE TRACK/ PLAYLIST/ ALL ERASE

IC RECORDER

Mode	Options
RECORD	HQ/ SP/ LP
SPEED	LOW-NOR
ERASE	SINGLE TRACK/ ALL VOICE

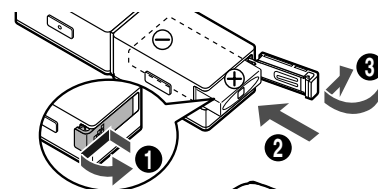
SYSTEM

Mode
LANGUAGE/ AUTO OFF/ BACKLIGHT/ CONTRAST/ SOUND GRAPHIC/ SLEEP TIME

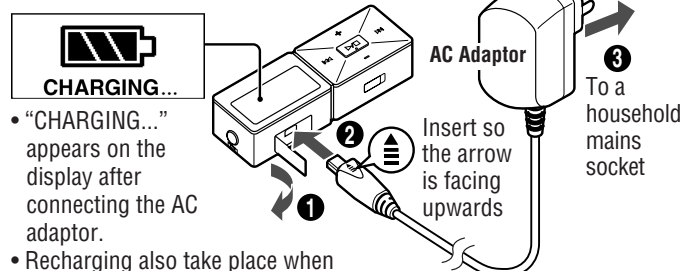
Rechargeable battery (included)

Charge before initial use

1 Insert the rechargeable battery.



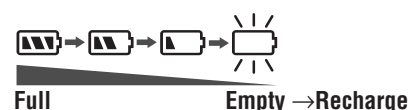
2 Charge the battery.



Recharging time: Approx. 6 hours

- The display will turn off when recharging is complete.

Battery indicator

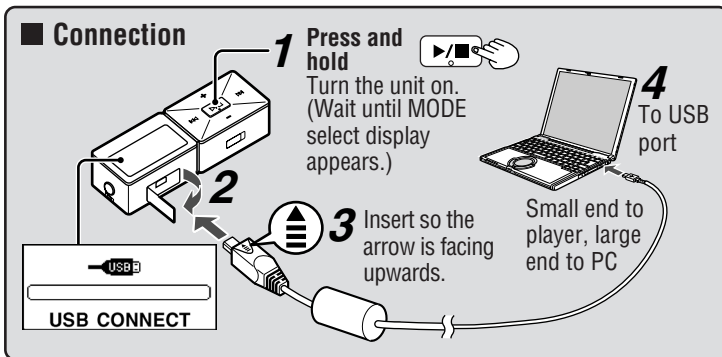


- Note**
- You can not play the unit while charging.
 - The unit is in the standby condition when the AC adaptor is connected. The primary circuit is always "live" as long as the AC adaptor is connected to an electrical outlet.
 - The configuration of the AC adaptor differs according to the area.
 - Ensure the AC adaptor cable is kept as straight as possible. Bending it too much may cause an accident.
 - After recharging is complete, you have to disconnect USB cable and wait about 20 minutes before removing the battery.

System Requirements

- OS: Microsoft® Windows® 98SE, Windows® Me, Windows® 2000 Professional, Windows® XP Home Edition/Professional
 Drive: CD-ROM Drive
- The player and USB Driver cannot be used on Microsoft® Windows® 3.1, Windows® 95, Windows® 98, Windows NT® and Macintosh®.
- USB Driver:
- Operation on an upgraded OS is not guaranteed.
 - Operation on an OS other than the one pre-installed is not guaranteed.
 - Multi-CPU or Multi-boot environments are not supported.
 - Only users having system administrator (Administrator) authority can use this software.

Connecting to a computer and downloading files



After connection (Driver installation)

- Windows® ME, 2000, or XP:** The computer automatically finds and installs the driver for the player.
 - Windows® 98SE:** Put the included CD-ROM in your disk drive, then follow the instructions on the computer screen to install the driver.
- The player appears in My Computer or Explorer as a removable disk or device.

Downloading MP3 and WMA

- In My Computer or Explorer, open the player's folder (removable disk or device).
 - Open the **PLAYER** folder.
 - Copy and paste or drag and drop the MP3/WMA files from your computer's folder into the **PLAYER** folder.
- "DOWNLOAD" appears on the player's display. When downloading is completed, "USB CONNECT" re-appears.
- Disconnect the USB cable if instructed to do so in the PC's operating instructions.
- The player will turn off when downloading is completed.
 - You can first put files into a new folder and then put that folder into the **PLAYER** folder. The folders are treated as sublists by the player and the names appear when you select play lists.

- Note**
- The first 20 characters of a file name you create on a computer are displayed on this unit.
 - There are some characters which cannot be displayed due to an embedded font data limitation.
 - Supports MP3 ID3 V1 tags, ID3 V2 tags and WMA tags.
 - If there are no ID3 tags, the display shows the "filename.mp3".
 - You cannot play MP3/WMA files that are in the player through the computer.
 - Ensure the USB cable is kept as straight as possible. Bending it too much may cause an accident.
 - Operation cannot be guaranteed if you use a USB hub or extension cable.
 - ID3 tags will not be displayed correctly if the language of the ID3 tag recorded for the MP3 is different from the language setting for this unit.
 - Compatible with WMA (DRM).

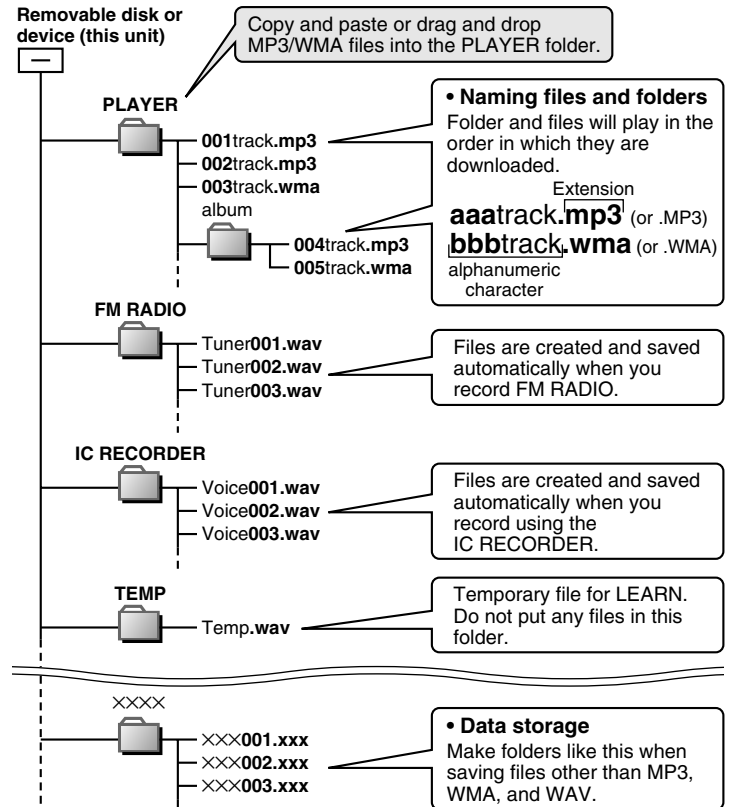
HOLD switch

Button operations are ignored. It prevents:

- The unit turning on unexpectedly causing the battery to run down.
- Interruptions to play or recording.



Files and Folders Structure display on your computer



- Note**
- Total maximum 383 tracks. Total maximum 20 folders.
 - MP3 / WMA Files put into folders other than the **PLAYER** folder are erased when you disconnect the USB cable.
 - You cannot upload MP3/WMA files from this unit's **PLAYER** folder to a computer, but you can erase them.
 - Do not remove the battery while recording with the **IC RECORDER** or **FM RADIO** as all the data you were recording at the time will be lost.
 - Using the **IC RECORDER** as an example, assume the number of recordings has been made up to Voice100. If you delete Voice005 and Voice016, both of these become blank numbers. If you then add a recording it will become Voice005 and the next recording will become Voice016.
 - This unit is compatible with Windows Media Audio 9 (WMA9), however not with WMA9 Professional/Lossless/Voice and MBR※.
 - ※ Multiple Bit Rate: A file that contains the same content encoded at several different bit rates.
 - If you use VBR format MP3 files, some of the unit's functions can not be operated normally.

Saving Data

- The data recorded using this unit's **IC RECORDER** or **FM RADIO** can be uploaded to a PC.
- MP3 and WMA files in this unit can't be uploaded to a PC.
- You can use this unit as a removable disk for saving PC data by connecting the USB cable to a PC. (→left)

Displays

NO TRACK PLAY	• There is no audio data in the player.
LOW BATTERY	• The rechargeable battery may be depleted. Please recharge it.
NO BATTERY	• You haven't inserted the rechargeable battery into the unit.
HOLD	• The HOLD switch is on.
MEMORY FULL	• Memory is full.
TRACK OVER	• You have tried to record more than 383 tracks into a play list.

Maintenance

Clean with a soft, dry cloth.

Do not use any type of abrasive pad, scouring powder or solvent such as alcohol or benzene.

Specifications

Memory size:	SV-MP710V: 256 MB / SV-MP720V: 512 MB
Supported sampling frequency:	MP3 32 kHz, 44.1 kHz, and 48 kHz WMA 8 kHz to 44.1 kHz MP3 8 kbps to 320 kbps (128 kbps is recommend) WMA 32 kbps to 192 kbps (96 kbps is recommend)
Supported bit-rates:	Stereo, 2 channels (MUSIC, FM RADIO) Mono, 1 channel (IC RECORDER)
No. of channels:	20 Hz to 20,000 Hz (+0 dB, -6 dB) (MUSIC) 300 Hz to 4,300 Hz (IC RECORDER, HQ mode) 30 dB (IC RECORDER, HQ mode)
Frequency response:	87.90 MHz to 107.90 MHz (200 kHz steps) 87.50 MHz to 108.00 MHz (50/100 kHz steps)
Mic S/N:	1.6 mW + 1.6 mW (16 Ω, M3 jack)
Radio Frequency range (FM):	DC 1.2 V (one rechargeable battery)
Output:	10 hours (MUSIC)※ ¹ / 5 hours (FM RADIO)
Power supply:	Approximate recording times※ ¹ : 9 hours (IC RECORDER, HQ mode) 5 hours (FM RADIO)
Approximate play times※ ¹ :	Cabinet dimensions (W×H×D): 70.0 × 22.2 × 14.0 mm
Approximate recording times※ ¹ :	Mass: 36.2 g with battery / 23.5 g without battery
	AC adaptor input: AC110 V-240 V 50 Hz/ 60 Hz

Power consumption in standby mode: 0.1 W
• Specifications are subject to change without notice.
• The play time shown depends on operating conditions.
• Mass and dimensions are approximate.
• MB means one million bytes. Useable capacity will be less.
• This product is compatible with the Unicode. The display may not appear correctly with other character codes.
※1 When the supplied rechargeable battery is fully charged.
※2 The play time shown is when the bit rate is 128 kbps (MP3), EQ is set to NORMAL, volume is 11 and the backlight is not used.

Troubleshooting guide

Before requesting service, make the following checks. If you are in doubt about any of the check points, or if the solutions indicated in the chart do not solve the problem, consult your dealer.

No operation	• The HOLD function is on. • The rechargeable battery may be depleted.
The power supply switches off	• The SLEEP TIME function is on. (→page 6)
Play time is short after recharging	• This may occur the first time you recharge the battery or if you haven't used them for a long time. Play time should be restored after a few recharges. • If play is extremely short even after fully recharging the battery, the battery may have exceeded their life. Rechargeable battery can be recharged approximately 300 times.
No sound or there is a lot of noise	• Ensure the earphone plug is inserted firmly. • Wipe the plug clean with a clean cloth. • Turn up the volume. • Keep this unit away from mobile telephones.
Play doesn't resume from the track where I stopped play	• This doesn't work if: You download, record, delete files, or charge the battery.
Play doesn't start from the first track	• The random play mode may be on. • Play usually resumes from the track where you last stopped play. Use skip to return to the first track.
The unit stops working	• Take the rechargeable battery out for about 5 seconds, then reinsert it. • RESET procedure 1. Slide the HOLD switch to ON. 2. Turn the unit on. 3. Press [MODE] 3 times. 4. Press [RECORD/STOP]. All the memories in the unit are deleted.
The display is too dark or too light	• Adjust the contrast. (→page 6)
Play doesn't start immediately	• Depending on the amount of data in the unit, it may take some time for play to start after downloading / recording or changing the battery.
The AC adaptor becomes warm during recharging	• This is normal.

For the United Kingdom and Republic of Ireland

Sales and Support Information
Customer Care Centre
• For UK customers: 08705 357357 • For Republic of Ireland customers: 01 289 8333
• Visit our website for product information www.panasonic.co.uk
• E-mail: customer.care@panasonic.co.uk
Direct Sales at Panasonic UK
• Order accessory and consumable items for your product with ease and confidence by phoning our Customer Care Centre Monday – Thursday 9:00am – 5:30pm, Friday 9:30am – 5:30pm (Excluding public holidays).
• Or go on line through our Internet Accessory ordering application at www.panasonic.co.uk .
• Most major credit and debit cards accepted.
• All enquiries transactions and distribution facilities are provided directly by Panasonic UK Ltd.
• It couldn't be simpler!
• Also available through our Internet is direct shopping for a wide range of finished products, take a browse on our website for further details.

Care and use

- Leave some slack in the cord of the earphones and the neck lanyard if you wind them around the unit.
 - Do not;
 - disassemble, remodel, drop, or allow the unit to get wet.
 - use or store in locations directly exposed to sunlight, corrosive gases, a heat vent, or a heating appliance.
 - use or store in humid or dusty locations.
 - use force to open the battery lid.
 - play your headphones or earphones at a high volume.
- Batteries
- Do not peel off the covering on batteries and do not use if the covering has been peeled off.
 - Align the poles + and - correctly when inserting batteries.
 - Remove batteries if you do not intend to use the unit for a long time.
 - Do not throw into fire, short-circuit, disassemble, or subject to excessive heat.
 - Keep out of the reach of small children.
- Accidental swallowing of batteries can result in stomach and intestinal damage.
- Allergies
- Discontinue use if you experience discomfort with the earphones or any other parts that directly contact your skin. Continued use may cause rashes or other allergic reactions.

This product may receive radio interference caused by mobile telephones during use. If such interference is apparent, please increase separation between the product and the mobile telephone.

Your attention is drawn to the fact that recording pre-recorded tapes or discs or other published or broadcast material may infringe copyright laws.

The socket outlet shall be installed near the equipment and easily accessible or the mains plug or an appliance coupler shall remain readily operable.

Caution: • Use only the provided shielded interface cables when connecting to computer.
• To reduce risk of radio interference caused by headphone, earphone or microphone cable, only purchase accessories with cable length less than 3 m.

THIS UNIT IS INTENDED FOR USE IN MODERATE CLIMATES.

WARNING: TO REDUCE THE RISK OF FIRE, ELECTRIC SHOCK OR PRODUCT DAMAGE, DO NOT EXPOSE THIS APPARATUS TO RAIN, MOISTURE, DRIPPING OR SPLASHING AND THAT NO OBJECTS FILLED WITH LIQUIDS, SUCH AS VASES, SHALL BE PLACED ON THE APPARATUS.

CAUTION! • DO NOT INSTALL OR PLACE THIS UNIT IN A BOOKCASE, BUILT-IN CABINET OR IN ANOTHER CONFINED SPACE. ENSURE THE UNIT IS WELL VENTILATED. TO PREVENT RISK OF ELECTRIC SHOCK OR FIRE HAZARD DUE TO OVERHEATING, ENSURE THAT CURTAINS AND ANY OTHER MATERIALS DO NOT OBSTRUCT THE VENTILATION VENTS.
• DO NOT OBSTRUCT THE UNIT'S VENTILATION OPENINGS WITH NEWSPAPERS, TABLECLOTHS, CURTAINS, AND SIMILAR ITEMS.
• DO NOT PLACE SOURCES OF NAKED FLAMES, SUCH AS LIGHTED CANDLES, ON THE UNIT.
• DISPOSE OF BATTERIES IN AN ENVIRONMENTALLY FRIENDLY MANNER.

SUOMI TÄMÄ LAITE ON TARKOITETTU KÄYTETTÄVÄKSI LEUDOSSA ILMASTOSSA.

VAROITUS: TULIPALO-, SÄHKÖISKUVAARAN TAI TUOTETTA KOHTAAVAN MUUN VAHINGON VÄHENTÄMISEKSI EI LAITETTA SAA ALTISTAA SATEELLE, KOSTEUDELLE, VESIPISAROILLE TAI ROISKEELLE, EIKÄ NESTETTÄ SISÄLTÄVIÄ ESINEITÄ, KUTEN ESIMERKIKSI MALJAKOITA, SAA ASETTAA LAITTEEN PÄÄLLE.

VAROITUS! • ÄLÄ ASENNA TAI LAITA TÄTÄ LAITETTA KABINETTITYYPPISEEN KIRJAKAAPPIIN TAI MUUHUN SUL JETTUUN TILAAN, JOTTA TUULETUS ONNISTUISI. VARMISTA, ETTÄ VERHO TAI MIKÄÄN MUU MATERIAALI EI HUONONNA TUULETUSTA, JOTTA VÄLTETTÄISIIN YLIKUUMENEMISESTA JOHTUVA SÄHKÖISKU- TAI TULIPALOVAARA.
• ÄLÄ PEITÄ LAITTEEN TUULETUSAUKKOJA SANOMALEHDellä, PÖYTÄLINALLA, VERHOLLA TAI MUULLA VASTAAVALLA ESINEELLÄ.
• ÄLÄ ASETA PALAVAA KYNTYLÄÄ TAI MUUTA AVOTULEN LÄHDETTÄ LAITTEEN PÄÄLLE.
• HÄVITÄ PARISTOT LUONTOA VAHINGOITTAMATTOMALLA TAVALLA.

Laite tulee asettaa lähelle verkkopistorasiaa ja pistokkeen täytyy olla sellaisessa asennossa, että siihen on helppo tarttua ongelman sattuessa.

NORSK DETTE APPARATET ER BEREGNET TIL BRUK UNDER MODERATE KLIMAFORHOLD.

ADVARSEL: FOR Å REDUSERE FAREN FOR BRANN, ELEKTRISK STØT ELLER SKADER PÅ PRODUKTET, MÅ DETTE APPARATET IKKE UTSETTES FOR REGN, FUKTIGHET, VANNDRÅPER ELLER VANNSPRUT. DET MÅ HELLER IKKE Plasseres GJENSTANDER FYLT MED VANN, SLIK SOM BLOMSTERVASER, OPPÅ APPARATET.

ADVARSEL! • APPARATET MÅ IKKE Plasseres I EN BOKHYLLE, ET INNEBYGGET KABINETT ELLER ET ANNET LUKKET STED HVOR VENTILASJONSFORHOLDENE ER UTILSTREKKELIGE. SØRG FOR AT GARDINER ELLER LIGNENDE IKKE FORVERRER VENTILASJONSFORHOLDENE, SÅ RISIKO FOR ELEKTRISK SJOKK ELLER BRANN FORÅRSAKET AV OVERHETING UNNGÅS.
• APPARATETS VENTILASJONSÅPNINGER MÅ IKKE DEKKES TIL MED AVISER, BORDDUKER, GARDINER OG LIGNENDE.
• Plasser IKKE ÅPEN ILD, SLIK SOM LEVENDE LYS, OPPÅ APPARATET.
• BRUKTE BATTERIER MÅ KASSERES UTEN FARE FOR MILJØET.

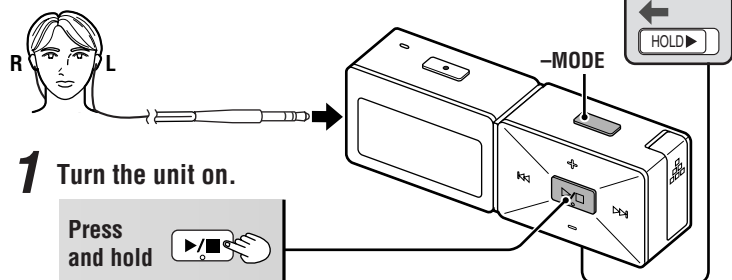
Utstyret bør plasseres i nærheten av ACstikkkontakten, og støpslet må være lett tilgjengelig hvis det skulle oppstå problemer.

Playing tracks (MUSIC mode)

Do each step within 10 seconds

Preparation: Download (→page 2) or **record tracks** (→page 5)

Release (before operation)



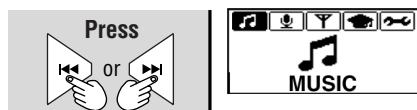
1 Turn the unit on.

Press and hold

The unit will highlight the mode last used.

2 Select MUSIC.

Skip this step if MUSIC is already selected.

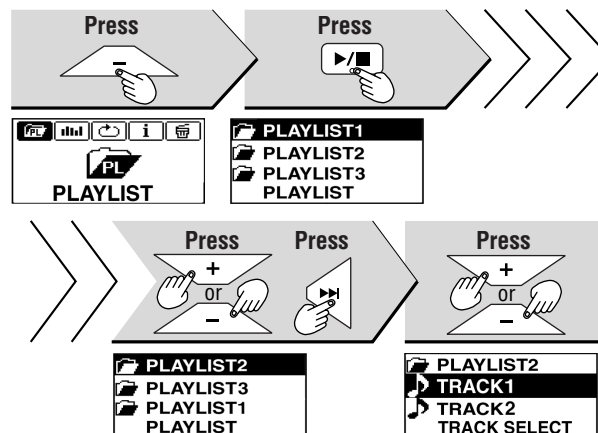


Adjust the volume	Press or (0-25) VOL	
Setting mode Other modes	Press and hold	Skip
A-B repeat	Press at the start point (A) and once more at the end point (B) within the same track. Press to cancel.	Stop
		Resume

Note • To delete the contents (→ page 6, "MUSIC, ERASE MODE").

3 Select the play list.

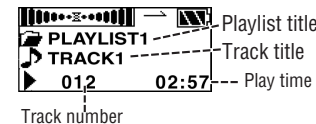
• To play recordings, select the FM RADIO play lists.



4 Start play.



Play stops at the end of the play list.



Using the language learner (LEARN mode)

Do each step within 10 seconds

Preparation: Download the language learning model recording.

Select LEARN and use **Play**, **Skip**, **Search**, **Stop**, **Resume**, **Off** and **change modes** as you would in the MUSIC. (→ above)



Repeating and listening to model recordings (TRACE BACK)

Repeat and listen to the specified trace back segment.

1 Turn on the TRACE BACK function. (→ page 6, "LEARN, REPEAT SET").

2 While playing the model recording, press .

3 Listen to the model recording.

Play goes back 6 seconds and repeats 3 times. The number of times to repeat and the trace back time can be changed. (→ page 6, "LEARN, REPEAT SET")



• Microsoft, the Microsoft logo, the Windows, Windows logo, Windows NT and Windows Media are either trademarks or registered trademarks of Microsoft Corporation in the United States and other countries.



• WMA is a compression format developed by Microsoft Corporation. It achieves the same sound quality as MP3 with a file size that is smaller than that of MP3.
• MPEG Layer-3 audio decoding technology licensed from Fraunhofer IIS and Thomson multimedia.
• Other names of systems and products mentioned in these instructions are usually the registered trademarks or trademarks of the manufacturers who developed the system or product concerned. The TM and [®] marks are not used to identify registered trademarks and trademarks in these instructions.

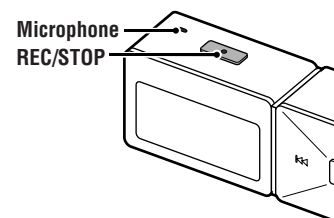
Comparing model recordings and your voice (COMPARE)

You can continuously play and compare pronunciation of the model recording with your recorded voice.

1 Start playing the model recording.

2 Press .

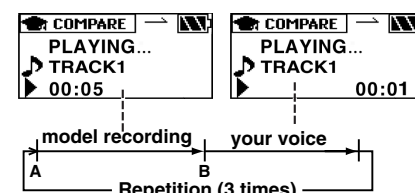
3 When "RECORDING" appears, speak into the microphone.



4 Press .

5 When "PLAYING" appears, listen to the model recording and your recorded voice.

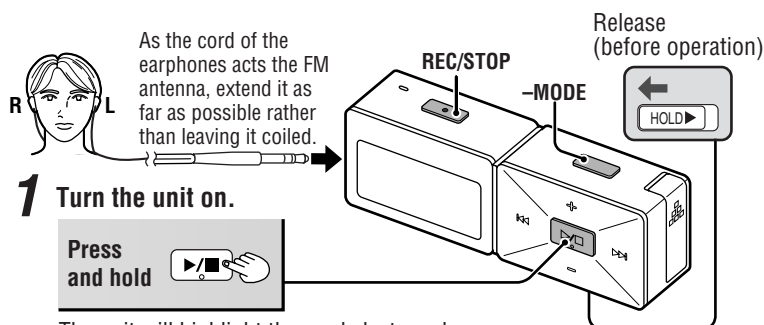
Both play continuously 3 times. The number of times to repeat can be changed. (→ page 6, "LEARN, REPEAT SET")



Note • During TRACE BACK and A-B repeat function, if you press , the COMPARE function will not work.
• To delete the contents (→ page 6, "LEARN, ERASE MODE").

Using the FM radio (FM RADIO mode)

Do each step within 10 seconds



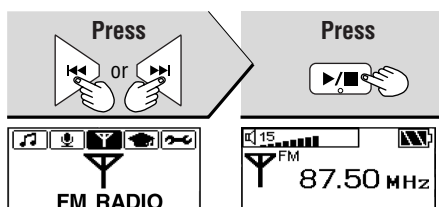
1 Turn the unit on.

Press and hold

The unit will highlight the mode last used.

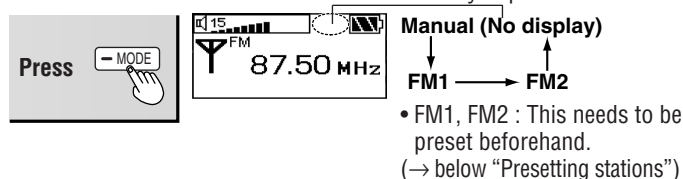
2 Select FM RADIO.

Skip this step if FM RADIO is already selected.

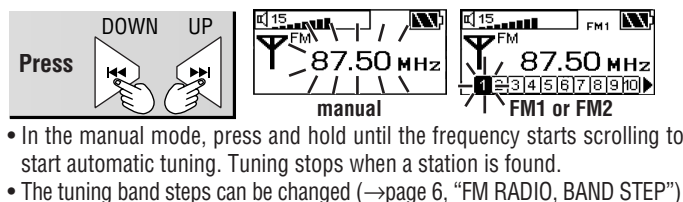


3 Select manual or preset mode.

Each time you press



4 Select the station.



Adjust the volume	Press + or - (0-25)
Setting mode	Press and hold -MODE
Other modes	Press and hold ▶
Off	Press and hold ▶

Recording the radio

While listening to the station.

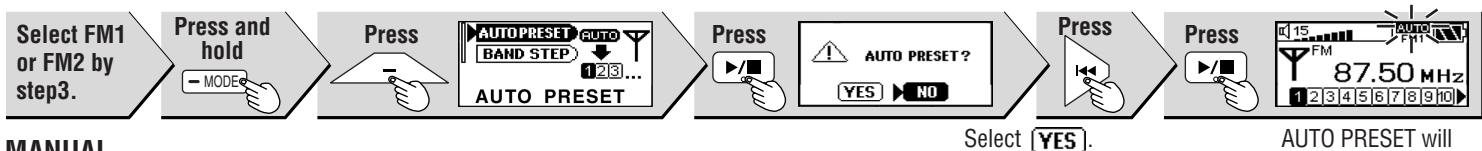


Presetting stations (FM1, FM2)

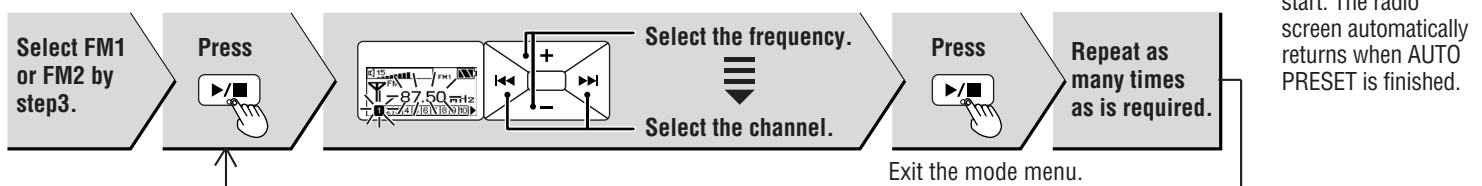
FM1: 20 stations can be stored.

FM2: 10 stations can be stored.

AUTO



MANUAL



Voice recording (IC RECORDER mode)

Do each step within 10 seconds

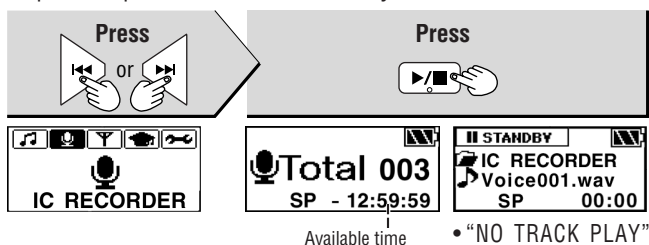
1 Turn the unit on.

Press and hold

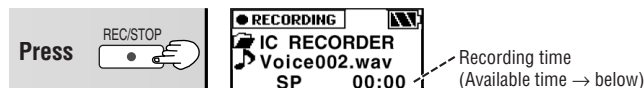
The unit will highlight the mode last used.

2 Select IC RECORDER.

Skip this step if IC RECORDER is already selected.



3 Start recording.



4 Speak into the microphone.

Show available time	Press -MODE . Press again to show the recording time.
Stop recording	Press REC/STOP .
To play recorded tracks	Press ▶ After all recorded tracks are played the unit returns to standby. During play, press again to stop and return to standby.
Setting mode	Press and hold -MODE
Other modes	Press and hold ▶
Off	Press and hold ▶

- Skip and Search method is the same as MUSIC mode (→page 4).
- The unit will turn off if left in standby mode for more than 5 minutes.
- To delete the contents (→ page 6, "IC RECORDER, ERASE MODE").

You can set various items in each mode.

1. Select MODE

2. Settings for selected mode displayed.

3. Select the desired item

4. Set

5. Confirm

Press and hold **MODE** → Press **◀** or **▶** → Press **▶** → Press and hold **MODE** → Press **◀** or **▶** → Press **◀** or **▶** → Press **+** or **-** → Press **▶**

Example: PLAY MODE (MUSIC)

① MUSIC ② ③ ④ ⑤

• Step 2 is not necessary with SYSTEM.

• Press **MODE** to cancel the setting.

1 MUSIC

PLAYLIST

(→ page 4, MUSIC mode, step 3)

SOUND MODE

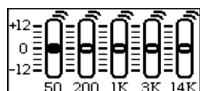
CONCERT 3D



The SURROUND effect with presence.

WEAK, NATURAL, STRONG, 3D SET(USER DEFINE)*1.

*1: Press **▶**, **◀** to select the range and then press **+**, **-** to set level.



EQ SETTING



NORMAL: No change in sound
*2: on/off of the REMASTER is possible → right

ROCK: Adds impact

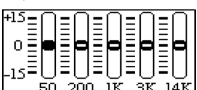
JAZZ: Adds club-like atmosphere

POP: Clarifies the treble range

CLASSIC: Adds concert hall-like atmosphere

USER DEFINE:

Press **▶**, **◀** to select the range and then press **+**, **-** to set level.



*2: REMASTER (Digital Re-master)
You can regenerate signal frequency lost during compression, restoring the sound to near pre-compression form.

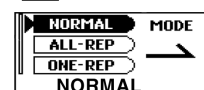
Press **▶**, **◀** and then press

▶, **◀** to set on/off.

ON: Sound enhanced

OFF: Conserves battery life

PLAY MODE



→ NORMAL: Normal play

→ ALL-REP: All tracks repeat in a list

1 → ONE-REP: 1 track repeat

RANDOM: All tracks random repeat in a list.

INFO. MODE

Show artist and data information



ERASE MODE

Erasing

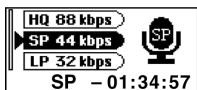


• When selecting ALL, press **▶** (YES) and press **▶**.

2 IC RECORDER

RECORD MODE

The record mode



Recording time guide

(Maximum hours available when player is empty of files.)

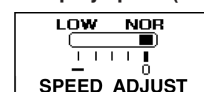
Mode	SV-MP710V	SV-MP720V
HQ	6	12
SP	12	24
LP	18	36

(in hours)

HQ: High quality
SP: Standard play
LP: Long play

SPEED MODE

The play speed (Low-Normal)



ERASE MODE (Same method as MUSIC)

• There is no PLAYLIST.

3 FM RADIO

AUTOPRESET AUTO PRESET (→ page 5, FM RADIO mode, Presetting stations)

BAND STEP BAND STEP

The tuning band step



Select 50 kHz, 100 kHz or 200 kHz. Converting the steps erases all preset stations.

4 LEARN

PLAYLIST (→ page 4, MUSIC mode, step 3)

PLAY MODE (Same method as MUSIC)

* However no RANDOM setting.

REPEAT SET



• TIME: Number of times to repeat

• TRACE*: TRACE / A-B repeat

• T.TIME: Number of seconds to trace.

If you do not select "TRACE BACK" mode, "T.TIME" does not appear.

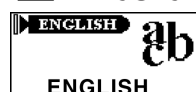
* TRACE
Repeat and listen to the specified trace back segment.
* A-B repeat
Play repeats between the two points.

SPEED MODE (Same method as IC RECORDER)

ERASE MODE (Same method as MUSIC)

5 SYSTEM

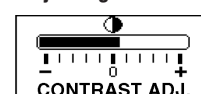
LANGUAGE



• The language setting is English only.

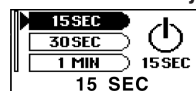
CONTRAST

Adjusting the screen contrast



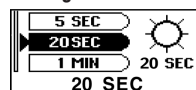
AUTO OFF

Setting the elapsed time before the power automatically turns off due to inactivity



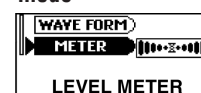
BACKLIGHT

Setting the duration the display will light when a button is pressed



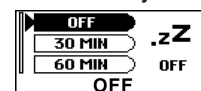
SOUND GRAPHIC

Selecting the display graphic mode



SLEEP TIME

Setting the time the unit will automatically turn off



• The display will show ".zZ" when SLEEP is selected.