

Portable CD Player Operating Instructions

The model number and serial number of this product can be found on either the back or the bottom of the unit. Please note them in the space provided below and keep for future reference.

MODEL NUMBER _____
SERIAL NUMBER _____

Dear Customer

Thank you for purchasing this product. Before connecting, operating or adjusting this product, please read these instructions completely. Please keep this manual for future reference.



This manual was printed with soy based ink.

Panasonic Consumer Electronics Company,
Division of Matsushita Electric Corporation of America
One Panasonic Way Secaucus, New Jersey 07094 <http://www.panasonic.com>
Panasonic Sales Company,
Division of Matsushita Electric of Puerto Rico, Inc. ("PSC")
Ave. 65 de Infantería, Km. 9.5 San Gabriel Industrial Park, Carolina, Puerto Rico 00985

Panasonic Canada Inc.
5770 Ambler Drive, Mississauga, Ontario L4W 2T3 www.panasonic.ca

© 2003 Matsushita Electric Industrial Co., Ltd.
Printed in Japan

RQT7184-P
F1103TR0

Troubleshooting guide

Before requesting service, make the following checks. If you are in doubt about some of the check points, or if the remedies indicated in the chart do not solve the problem, see "Product information" on page 3 for assistance.

No play.	<ul style="list-style-type: none"> •The HOLD function is on. Release HOLD (⇄page 5). •The batteries may have run empty (⇄page 5). (If play is extremely short even after fully recharging the batteries, the batteries may have exceeded their life. Rechargeable batteries can be recharged approximately 300 times.) •The disc isn't correctly set. •The disc is scratched or dirty. (Tracks skipped.) •There is moisture on the lens. Wait for about an hour and then try again. •The lens is dirty: clean it with a blower (recommended product: SZZP1038C). If the lens gets marked with fingerprints, gently wipe them off with a cotton swab. •The unit may not read MP3 correctly if it is shaken while it is reading the files. •Play of a multi-session disc may not be possible if there is a blank data segment between sessions. •If there is large JPEG data etc. within a MP3 file, sound may become muted and play may not be possible. •If you try playing a CD that contains CD-ROM format data and normal audio data (CD-DA), output from one of the above may become silent, and play may not be possible.
No sound or there is a lot of noise.	<ul style="list-style-type: none"> •Ensure the plugs are inserted firmly. •Wipe the plugs clean with a clean cloth. •Noise may occur when playing MP3 if recording quality is poor. •The elapsed playing time disappears and sound is interrupted if bumps continue repeatedly. •Separate this unit from mobile telephones.
Play doesn't resume from the last point stopped.	<ul style="list-style-type: none"> •This doesn't work if you change discs. •This doesn't work during random play. •It may not work correctly under some conditions.
Play doesn't start from the first track.	<ul style="list-style-type: none"> •Random play modes may be on (⇄page 6). •Play resumes from the last point stopped.
The unit stops working.	Disconnect then reconnect all power sources (batteries and AC adaptor).
Cannot search through tracks.	You cannot search through MP3 files.
Cannot skip albums.	You cannot skip between the first and last albums during play.
Cannot change the Digital Re-master mode.	If [◀◀] or [▶▶] is pressed before [MEMO] you cannot change the Digital Re-master mode.

Cannot specify the AB segment.	You may not be able to specify segment A or B at the end of disc.
Digital Re-master does not work.	Depending on the type of MP3 disc recording, the effect may not appear.
The unit malfunctions when connected to other equipment.	Be sure to connect other equipment through the remote control. Speakers connected directly to the unit should have an impedance of 1 kΩ or less.
Cannot hear the remote control's operation tone.	The operation tone may be off (⇄page 6).
The remote control does not work properly.	Use only the included remote control to operate this unit.
Cannot recharge.	<ul style="list-style-type: none"> •You aren't using the special rechargeable batteries (⇄page 5). •You must insert two batteries before you can recharge them. •The unit must be off before you can recharge.
The AC adaptor becomes warm during recharging.	This is normal.
The batteries are taking a long time to recharge.	The batteries may take a maximum of 4 hours to recharge under some conditions.
Play time is short after recharging.	<ul style="list-style-type: none"> •This may occur after the first time you recharge the batteries or haven't used them for a long time. Play time should be restored after a few recharges. •The batteries can go flat if you leave the AC adaptor connected after recharging is complete.
The battery indicator fails to appear or is incorrect.	<ul style="list-style-type: none"> •The indicator does not appear when the AC adaptor is connected. •The indicator does not appear correctly under some conditions.

Display

<i>hold</i>	The HOLD function is on. Release HOLD (⇄page 5).
<i>no disc</i>	<ul style="list-style-type: none"> •You haven't inserted a disc or it isn't inserted correctly. •You have inserted a disc this unit cannot play.
<i>OPEN</i>	The disc lid is open.
<i>F</i>	The program already contains 20 tracks.
<i>]</i>	Reading MP3 files.

IMPORTANT SAFETY INSTRUCTIONS

Read these operating instructions carefully before using the unit. Follow the safety instructions on the unit and the applicable safety instructions listed below. Keep these operating instructions handy for future reference.

- 1) Read these instructions.
- 2) Keep these instructions.
- 3) Heed all warnings.
- 4) Follow all instructions.
- 5) Do not use this apparatus near water.
- 6) Clean only with dry cloth.
- 7) Do not block any ventilation openings. Install in accordance with the manufacturer's instructions.
- 8) Do not install near any heat sources such as radiators, heat registers, stoves, or other apparatus (including amplifiers) that produce heat.
- 9) Do not defeat the safety purpose of the polarized or grounding-type plug. A polarized plug has two blades with one wider than the other. A grounding-type plug has two blades and a third grounding prong. The wide blade or the third prong are provided for your safety. If the provided plug does not fit into your outlet, consult an electrician for replacement of the obsolete outlet.
- 10) Protect the power cord from being walked on or pinched particularly at plugs, convenience receptacles, and the point where they exit from the apparatus.
- 11) Only use attachments/accessories specified by the manufacturer.
- 12) Use only with the cart, stand, tripod, bracket, or table specified by the manufacturer, or sold with the apparatus. When a cart is used, use caution when moving the cart/apparatus combination to avoid injury from tip-over.
- 13) Unplug this apparatus during lightning storms or when unused for long periods of time.
- 14) Refer all servicing to qualified service personnel. Servicing is required when the apparatus has been damaged in any way, such as power-supply cord or plug is damaged, liquid has been spilled or objects have fallen into the apparatus, the apparatus has been exposed to rain or moisture, does not operate normally, or has been dropped.



Caution

- Discontinue use if you experience discomfort with the earphones or any other parts that directly contact your skin. Continued use may cause rashes or other allergic reactions.

■ Batteries

- Do not peel off the covering on the batteries and do not use if the covering has been peeled off.
- Align the poles + and – correctly when inserting the batteries.
- Do not mix different types of batteries or old and new batteries.
- Remove the batteries if you do not intend to use the unit for a long time.
- Do not throw into a fire, short-circuit, disassemble, or subject to excessive heat.
- Do not attempt to recharge dry cell batteries.
- When carrying batteries in a pocket or bag, ensure no metal objects such as necklaces are placed together with them. Contact with metal may cause short-circuiting which can cause a fire.

■ CDs

- Do not use irregularly shaped CDs.
- Do not use non-specification discs.
- Do not use CDs printed with label printers available on the market.
- Do not use CDs with labels and stickers that are coming off or with adhesive exuding from under labels and stickers.

■ Listening



Do not play your headphones or earphones at a high volume. Hearing experts advise against continuous extended play.

If you experience a ringing in your ears, reduce volume or discontinue use.

Do not use while operating a motorized vehicle. It may create a traffic hazard and is illegal in many areas.

You should use extreme caution or temporarily discontinue use in potentially hazardous situations.

Even if your headphones or earphones are the open-air type designed to let you hear outside sounds, don't turn up the volume so high that you can't hear what's around you.

Sound can be deceiving. Over time your hearing "comfort level" adapts to higher volumes of sound. So what sounds "normal" can actually be loud and harmful to your hearing.

Guard against this by setting your equipment at a safe level BEFORE your hearing adapts.

To establish a safe level:

- Start your volume control at a low setting.
- Slowly increase the sound until you can hear it comfortably and clearly, and without distortion.

Once you have established a comfortable sound level:

- Leave it there.

WARNING:

TO REDUCE THE RISK OF FIRE, ELECTRIC SHOCK OR PRODUCT DAMAGE, DO NOT EXPOSE THIS APPARATUS TO RAIN, MOISTURE, DRIPPING OR SPLASHING AND THAT NO OBJECTS FILLED WITH LIQUIDS, SUCH AS VASES, SHALL BE PLACED ON THE APPARATUS.

CAUTION!

THIS PRODUCT UTILIZES A LASER.
USE OF CONTROLS OR ADJUSTMENTS OR PERFORMANCE OF PROCEDURES OTHER THAN THOSE SPECIFIED HEREIN MAY RESULT IN HAZARDOUS RADIATION EXPOSURE.
DO NOT OPEN COVERS AND DO NOT REPAIR YOURSELF. REFER SERVICING TO QUALIFIED PERSONNEL.

CAUTION: (SL-SX430)

Use only car adaptor, Model: SH-CDC9
manufactured by Matsushita Electric Industrial Co., Ltd.

Marking sign is located on bottom of the unit.

THE FOLLOWING APPLIES ONLY IN THE U.S.A.**CAUTION:**

This equipment has been tested and found to comply with the limits for a Class B digital device, pursuant to Part 15 of the FCC Rules.

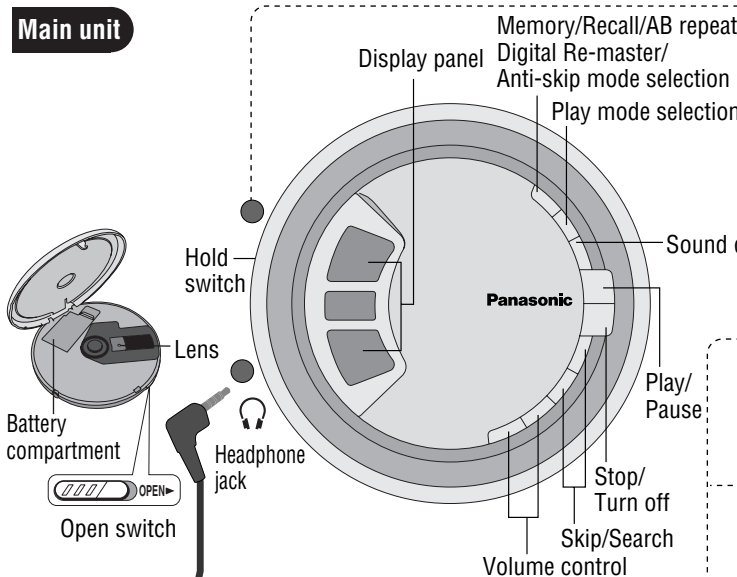
These limits are designed to provide reasonable protection against harmful interference in a residential installation. This equipment generates, uses and can radiate radio frequency energy and, if not installed and used in accordance with the instructions, may cause harmful interference to radio communications. However, there is no guarantee that interference will not occur in a particular installation. If this equipment does cause harmful interference to radio or television reception, which can be determined by turning the equipment off and on, the user is encouraged to try to correct the interference by one or more of the following measures:

- Reorient or relocate the receiving antenna.
- Increase the separation between the equipment and receiver.
- Connect the equipment into an outlet on a circuit different from that to which the receiver is connected.
- Consult the dealer or an experienced radio/TV technician for help.

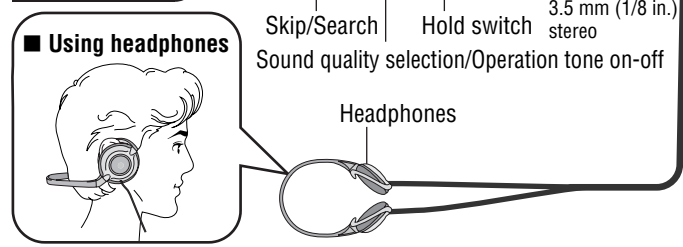
Location of controls/Connection to other equipment

Turn off this unit and the other equipment before connection.

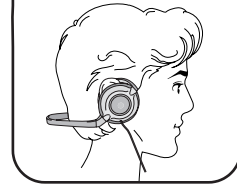
Main unit



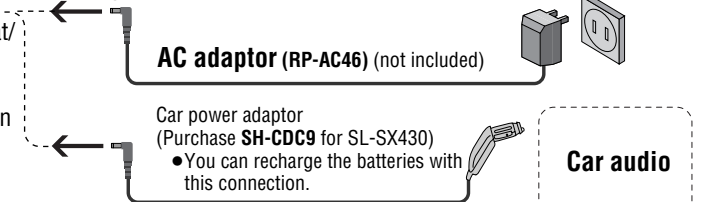
Remote control



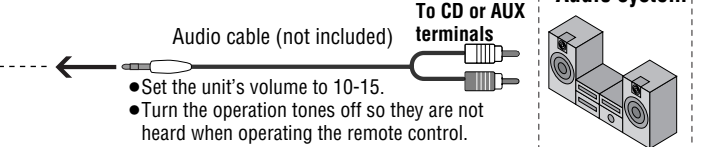
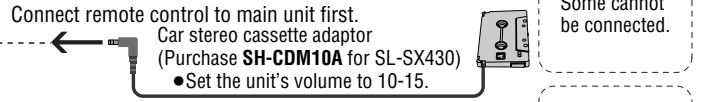
Using headphones



To DC IN jack



To remote control jack



Supplied Accessories

Check the packing carton for these accessories.

- 1 Pair of stereo headphones: **SL-SX431C** LOBAD0000165
- 1 Wired remote control: N2QCB000010 **SL-SX430** (only for U.S.A.)
- 2 Alkaline batteries
- 1 Car power adaptor: SH-CDC12PEY
- 1 Car stereo cassette adaptor: SHCDM10B1PYK

Use numbers indicated when ordering replacements or optional accessories from your Panasonic dealer.
In U.S.A. contact 1-800-332-5368 or the website (<http://www.pasc.panasonic.com>).

Specifications

Audio (CD-DA)

Sampling frequency: 44.1 kHz
 No. of channels: 2 (left and right, stereo)
 Headphone output level: RMS max. 6 mW+6 mW/16 Ω (adjustable)
 Frequency response: 20 Hz to 20,000 Hz (+0.5 dB to -7 dB)

Pickup

Light source: Semiconductor laser
 Wavelength: 780 nm

MP3

Supported bit-rates: 32 kbps to 320 kbps (128 kbps is recommended)
 Supported sampling frequency: 48 kHz/44.1 kHz/32 kHz
 Maximum number of items (total no. of albums and tracks): 999
 Maximum album levels: 100

General

Power supply: DC input (AC adaptor, not included): DC 4.5 V
 Operational temperature range: 0 °C-40 °C (32 °F-104 °F)
 Rechargeable temperature range: 5 °C-40 °C (41 °F-104 °F)

Play time: Using on a flat stable surface at 25 °C (77 °F), EQ is off, Hold is on, Anti-skip is on POS 1 (CD-DA), recommended bit rate (MP3:128 kbps), and the Digital Re-master is off (MP3). Play times are in hours and approximate.

Batteries used	MP3 disc	CD-DA disc
2 alkaline batteries	85	50
2 optional rechargeable batteries	40	23

Recharging time: 3 to 4 hours
 • The play time may be less depending on the operating conditions.
 • Play time will be considerably reduced when playing CD-RW.
 Dimensions (W×H×D): 135×24.3×135 mm (5⁵/₁₆"×3¹/₃₂"×5⁵/₁₆")
 Mass: 224 g (7.9 oz.) (with batteries)
 180 g (6.4 oz.) (without batteries)

Note: Specifications are subject to change without notice. Mass and dimensions are approximate.

Playing MP3

This unit can play MP3 files you have recorded to discs. MPEG Layer-3 audio decoding technology licensed from Fraunhofer IIS and Thomson multimedia.

HOLD

This function causes the unit to ignore accidental button presses. Set to HOLD so the unit doesn't power on accidentally or play is interrupted.
 • The unit and remote control each have independent HOLD switches.

Note on CD-R and CD-RW

This unit can play CD-R and CD-RW recorded with CD-DA or MP3. Use an audio recording disc for CD-DA and finalize* it when you finish recording. The unit may not be able to play some discs due to the condition of the recording.
 ※A process performed after recording that enables CD-R/CD-RW players to play audio CD-R and CD-RW.

Resume function

Play begins from the last point stopped. Replacing the disc cancels the function.

Auto off function

If the unit is left in stop mode for approximately 10 minutes, the unit turns itself off automatically.

Power Supply

Rechargeable batteries (not included) Recharge before initial use.

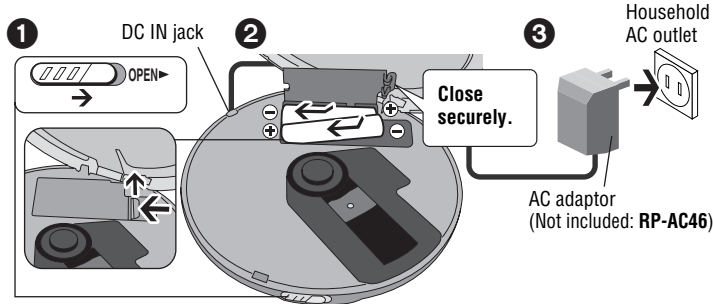
As a safety precaution this unit is constructed so it is impossible to recharge ordinary batteries. For details, check with your dealer.

Special rechargeable Ni-Cd batteries:
P-3GAVA/2B (set of 2)

Ordinary dry cell batteries/
rechargeable batteries



Make sure the unit is off when recharging.



- The battery indicator () scrolls while recharging and disappears when finished (3 to 4 hours).
- You can recharge the batteries before they are fully discharged.
- Fit the battery lid so it is secure and flush with the battery compartment. If it comes loose, it may scratch your discs.

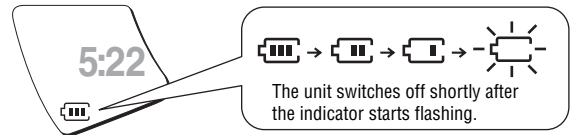
Dry cell batteries

After disconnecting the AC adaptor, insert two "LR6, AA, UM-3" alkaline batteries.

Insert the same way as the rechargeable batteries.

The battery indicator

This indicator appears when the unit is on.



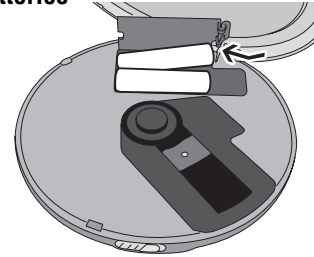
- Before playing starts the battery indicator may flash although the batteries are not drained. It appears correctly once you start play.

General

■ Play time

⇄ Specifications, page 4

■ Removing batteries



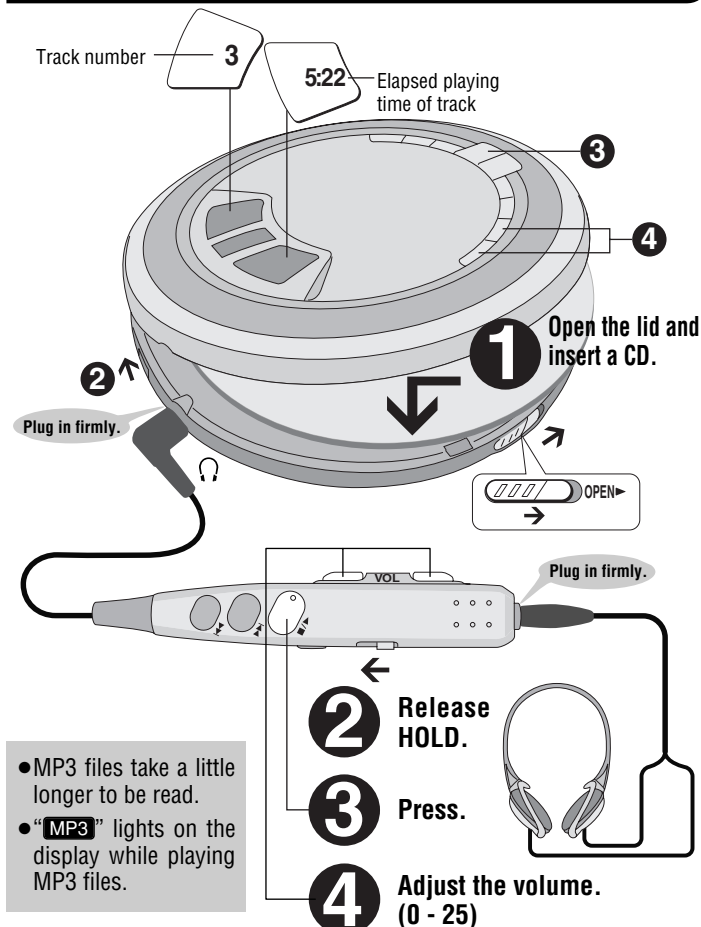
Car power adaptor

SL-SX431C includes a car power adaptor. (Refer to the separate installation instructions.)

Purchase the SH-CDC9 car power adaptor (not included) for use with SL-SX430.

How to Use

Playback



- MP3 files take a little longer to be read.
- "MP3" lights on the display while playing MP3 files.

Pause

Remote control

Not available.

Main unit

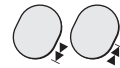


Press.

■ Press again to restart play.

Search

Remote control



Press and hold during play.

Main unit



Press and hold during play.

- You cannot search while playing MP3.
- You can search only within the current track during program, one track repeat, random, random repeat and AB repeat play modes (⇄ page 6).

Skip

Remote control



Press.

Main unit



Press.

- Press [] twice to skip to the beginning of the previous track during play.
- You cannot use [] to skip to the previous track during random play (⇄ page 6).

Stop/Turn off

Remote control



Press.

- Press and hold to turn the unit off.

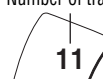
Main unit



Press.

- Press again to turn the unit off.

Number of tracks



51:52

Total play time

(MP3)

Number of albums



TRACK -- 25

Number of tracks

