

**Packard Bell**  
**Vibe 100**  
**Disassembly Manual**

**Vibe 100**



---

**Table of Contents**

Overview	2
Technician Notes	2
Disassembly Instructions	2
Reassembly Instructions	2
Required Tools	2
Hazardous Voltage	3
Avoid Electrostatic Discharge	3
Power Supply Unit	3
Opening the Casing	5
Removing the Battery	5
Removing the Hard Disk	6
Removing the Mainboard/LCD assembly	7
Notice	10

---

## **Overview**

This document contains step-by-step disassembly instructions for the Vibe 100 MP3 player. The instructions are illustrated where necessary with images of the part that is being removed or disassembled. Furthermore, the screws that are removed are shown next to the image of the parts themselves.

Packard Bell reserves the right to make changes to the Vibe 100 MP3 player without notice.

## **Technician Notes**

Only technicians authorized by Packard Bell should attempt to repair this equipment. All troubleshooting and repair procedures are detailed to allow only subassembly/module level repair. Because of the complexity of the individual boards and subassemblies, no one should attempt to make repairs at the component level or to make modifications to any printed wiring board. Improper repairs can create a safety hazard. Any indication of component replacement or printed wiring board modifications may void any warranty or exchange allowances.

## **Disassembly Instructions**

When disassembling the system unit, follow these general rules:

- n Turn off the power and disconnect all cables and peripherals.
- n Label all removed connectors. Note where the connector goes and in what position it was installed.
- n Do not disassemble the system into parts that are smaller than those specified in the instructions.

## **Reassembly Instructions**

Reassembly is the reverse of the disassembly process. Use care to ensure that all cables and screws are returned to their proper positions. Check that no tools or any loose parts have been left inside the player. Check that everything is properly installed and tightened.

## **Required Tools**

All disassembly procedures can be performed using the following tools:

- n Philips (#1 bit) screwdriver.
- n Small flat-bladed screwdriver or a small coin.

---

## **Hazardous Voltage**

There is hazardous voltage present inside the MP3 player when it is connected to an AC supply, even when the MP3 player's power switch is off. Exposure to hazardous voltage could cause personal injury. To avoid risk of injury, contact an Authorized Service Provider for proper (un)installation of optional hardware devices.

## **Avoid Electrostatic Discharge**

Electrostatic electricity can easily damage circuit cards and integrated circuits (ICs). To reduce risk of damage, store them in protective packaging whenever they are not installed in your system.

Add-in cards can be extremely sensitive to ESD and always require careful handling. After removing the card from the MP3 player, place the card flat on a grounded, static-free surface, component-side up. Use a conductive foam pad if available, but not the card wrapper. Do not slide the card over any surface.

Before you install or remove memory modules, video memory, disk drives, circuit cards or other devices, protect them from static electricity. To do so, make sure your MP3 player's power switch is OFF. Then, unplug the MP3 player's AC power cord. Before picking up the device you (un)install, you should wear an anti-static wrist wrap (available at electronic supply stores). Be sure to connect the wrist wrap to an unpainted metal portion of the MP3 player chassis. As an alternative, you can dissipate electrostatic build-up by touching an unpainted metal portion of the MP3 player chassis with one hand. Then touch the device you are (un)installing with the other hand, and maintain continuous contact with it until it is (un)installed in the MP3 player.

## **Power Supply Unit**

Under no circumstances should you attempt to disassemble the power supply. The power supply contains no user-serviceable parts. Inside the power supply are hazardous voltages that can cause serious personal injury. Always return a defective power supply to your dealer.

### **WARNING**

Ensure that the MP3 player is disconnected from its power source and from all telecommunications links, networks, or modem lines whenever the cover is removed. Do not operate the MP3 player with the cover removed.

### **AVERTISSEMENT**

Assurez-vous que le lecteur MP3 est débranché de son alimentation ainsi que de toutes les liaisons de télécommunication, des réseaux, et des lignes de modem avant d'enlever le capot. Ne pas utiliser le lecteur MP3 quand le capot est enlevé.

### **WARNUNG**

Der Player darf weder an eine Stromquelle angeschlossen sein noch eine Verbindung mit einer Telekommunikationseinrichtung, einem Netzwerk oder einer Modem-Leitung haben, wenn die Gehäuseabdeckung entfernt wird. Nehmen Sie den Player nicht ohne die Abdeckung in Betrieb.

### **ADVERTENCIA**

Asegúrese de que cada vez que se quite la cubierta del lector MP3, el dispositivo haya sido desconectado de la red de alimentación y de todos los enlaces de telecomunicaciones, de red y de líneas de módem. No ponga en funcionamiento el lector

---

MP3 mientras la cubierta esté quitada.

**WAARSCHUWING**

Zorg er voor dat alle verbindingen van en naar de MP3 speler (stroom, modem, netwerk, etc) verbroken worden voordat de behuizing geopend wordt. Zet de MP3 speler nooit aan als de behuizing geopend is.

**AVVERTENZA**

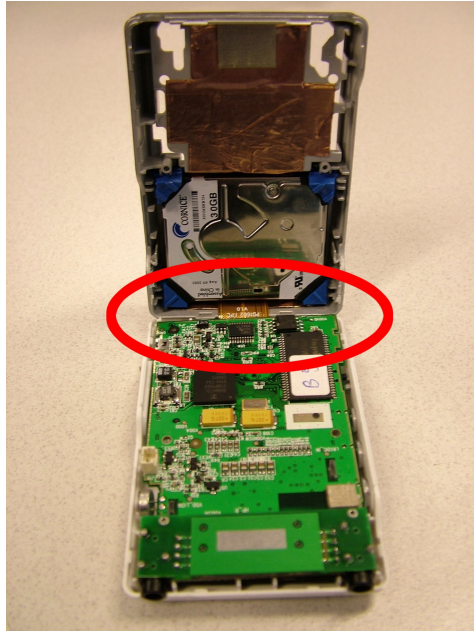
Prima di rimuovere il coperchio del Vibe 100, assicurarsi che il sistema sia scollegato dall'alimentazione, da tutti i collegamenti di comunicazione, reti o linee di modem. Non avviare il Vibe 100 senza aver prima messo a posto il coperchio.

---

## Opening the Casing

To open the player, perform these following steps:

1. Gently pry the bottom and the top cover apart. There is a flat cable keeping the mainboard and the hard disk together.



**Fig. 1** Location of the flat cable

2. Disconnect the flat cable on either end, depending on the parts that need to be exchanged

## Removing the Battery

To remove the internal battery, first open the casing (see [Opening the Casing](#)) and then perform the following steps:

1. Lift up the foil with product specifications on the backside; under the lower side corners are two screws.
2. Remove the two screws
3. Remove the cover, and lift the battery out, so that its connector is freely accessible (see **Fig. 2**).



**Fig. 2** Location of the battery connector

4. Release the connector on the mainboard. Use a small flathead screwdriver or tweezers.
5. Disconnect the battery from the mainboard.

## **Removing the Hard Disk**

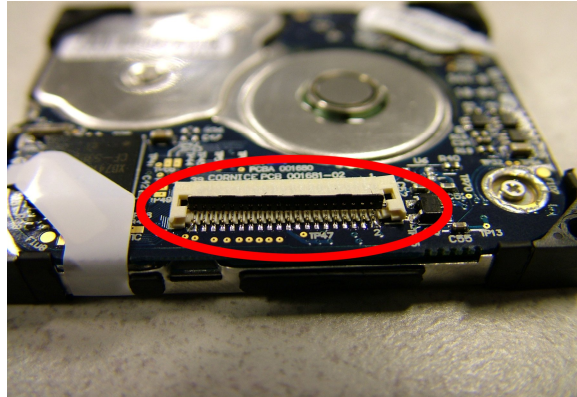
To remove the top cover, open the player (see [Opening the Casing](#)), remove the battery (see [Removing the Battery](#)), then perform these steps:

1. Lift out the hard disk.



**Fig. 3** The hard disk is lifted out.

2. Disconnect the flat cable from the hard disk. To do so, lift up the dark-coloured clip and pull out the flat cable.



*Fig. 4 The flat cable connector*

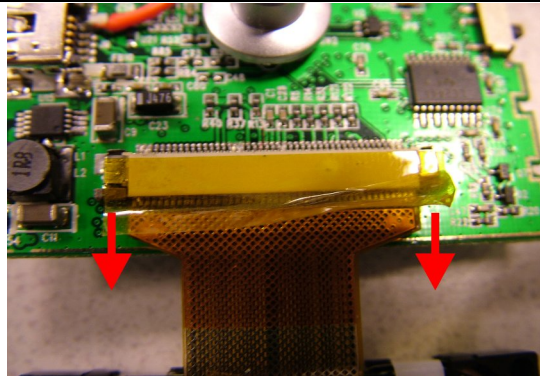
3. Remove the rubber placeholders, and place them on the new hard disk.
4. Reconnect the flat cable: push in the cable, and push down the clip to secure the cable.

### ***Removing the Mainboard/LCD assembly***

To remove the mainboard, open the player (see [Opening the Casing](#)), remove the battery (see [Removing the Battery](#)) and perform the following steps:

1. Lift up the mainboard to reach the HDD flat cable connector.
2. Lift up the tape covering the HDD connector.
3. Now push down the two clips on the side of the connector.
4. Take out the flat cable.





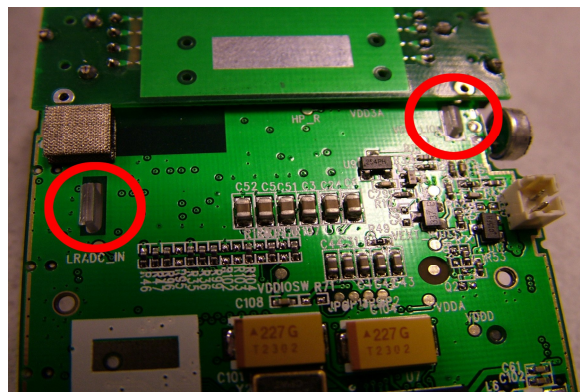
**Fig. 5** The HDD connector.

5. Push the side panel of the top cover gently aside.
6. The mainboard is loose now but the LCD panel is glued to the front. When removing the mainboard, the LCD screen itself will hinge. Carefully tear it loose.
7. When re-inserting the mainboard, avoid pressure on the mainboard area where the LCD is mounted.
8. When putting back the LCD only press the edges of the screen to re-glug it to the front panel.

---

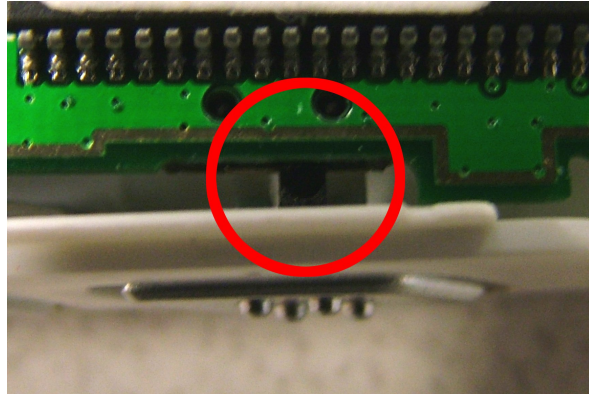
**Note** The plastic LCD bracket should be properly clicked into the mainboard before inserting it into the top cover (else there will be too much pressure on the LCD panel when fixing it inside the casing. (see **Fig. 6**)

---



**Fig. 6** The LCD plastic bracket

- 
9. Make sure the hold switch is properly aligned (see **Fig. 7**)



**Fig. 7** The hold switch

---

## **Notice**

The information in this guide is subject to change.

This guide contains information protected by copyright. No part of this guide may be photocopied or reproduced in any form or by any means without prior written consent from NEC Computers International B.V.

NEC COMPUTERS INTERNATIONAL B.V. SHALL NOT BE LIABLE FOR TECHNICAL OR EDITORIAL ERRORS OR OMISSIONS CONTAINED HEREIN; NOR FOR INCIDENTAL OR CONSEQUENTIAL DAMAGES RESULTING FROM THE FURNISHING, PERFORMANCE, OR USE OF THIS MATERIAL.

Copyright © 2006 Packard Bell B.V. All rights reserved.

Company names and product names mentioned herein may be trade names, trademarks and/or registered trademarks of their respective owners.

The software described in this guide is furnished under a license agreement or nondisclosure agreement. The software may be used or copied only in accordance with the terms of the license agreement.

### ***Vibe 100 Disassembly Manual***

Author: Aurélie Bosserdet

First Edition: February 2006

Document Part Number: 7404790000.

Version: 1.0

Packard Bell B.V.