



BY



mach speed technologies

AMERICAN OWNED AND OPERATED

Model A1000

USER'S MANUAL

WWW.MACHSPEED.COM

Congratulations on purchasing your Trio Personal Media Player! To get the most out of your purchase, please take the time to carefully read through this manual.

Foreword

If any problems occur during while using your Trio, please feel free to contact Mach Speed technical support at 580-272-0035, or sending an email to mssupport@machspeed.com.

Thank you for your support and cooperation!

Mach Speed Technologies bears no responsibility for any damage or loss of personal data due to misuse of software and/or hardware, damage to the player caused by human factors, replacement of battery, or other unforeseen circumstances. To prevent loss of your data, please backup your data regularly.

Information in the manual is subject to change without notice and is subject to copyright protection. Copying or otherwise reproducing this material without prior written consent is prohibited.

Due to Firmware changes, some of the pictures and functions described in this manual may not be the same as are included with your player.

Note:

- This player does NOT support DRM encrypted or copy protected WMA audio files, such as those provided by many subscription sites. Please

verify that your download service allows you to download files in MP3 format, or a non encrypted WMA format before loading files to the player.

- The playback times listed refer to the maximum playback times possible, using the best power savings. The actual playback time may differ as adjustments to screen brightness, power savings modes, volume, etc are made.
- As parameters such as bitrate and codecs differ, the player may not be compatible with all listed files. If you are experiencing issues playing your files on this player, we recommend using a supported conversion tool to reconvert your file to the specifications of the device.

Caution

Modifications not approved by the party responsible for compliance will void the user's authority to operate the equipment.

NOTE- This equipment has been tested and found to comply with the limits for Class B Digital device, pursuant to part 15 of the FCC rules. These limits are designed to provide reasonable protection against harmful interference in a residential installation. This equipment generate, uses and can radiate radio frequency energy and, if not installed and used in accordance with the instructions, may cause harmful interference to radio or telephone reception, which can be determined by turning the equipment off and on, the user is encouraged to try to correct the interference by one or more of the following measures:
Reorient or relocate the receiving antenna.

Increase the separation between the equipment and the receiver
Connect the equipment to an outlet on a circuit different from that to which the receiver is connected.

Consult the dealer or an experienced radio/TV technician for help.

Caution

Do not use the player in exceptionally cold or hot, dusty, damp or dry environments.

Do not drop, strike, or throw your player. Physical damage to your player will void ALL warranties.

Please charge your battery when:

The battery power icon shows an empty icon;

The system automatically shuts down and powers back off when you switch the unit on once again;

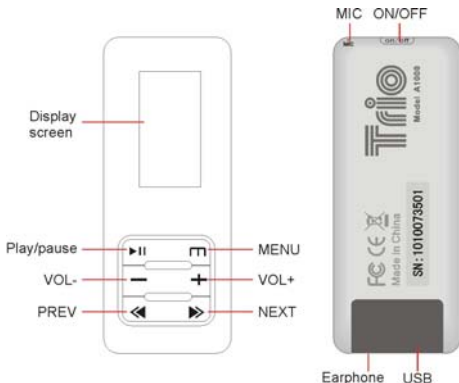
There is no response if you press a button

Please always follow the correct disconnect procedures for your operating system. Do not disconnect power abruptly when the player is being formatted or in the process of uploading or downloading files.

Otherwise it may lead to file corruption, firmware failure, and even hardware damage.

- We are not liable for any loss of data stored on this device.
- Please do not dismantle this player. Any disassembly not done by an authorized technician will void ALL warranties
- This product and manual are change without subject to notice.

Appearance



Basic Operations

- **Powering on:** Set the ON/OFF switch to the ON position, then press and hold the PLAY button for 5 seconds.
- **Powering off:** Press and hold the PLAY button for 5 seconds, until the player powers off. Once the device is powered off, set the ON/OFF switch to the OFF position.

Please note that if you do not press and hold the PLAY button before setting the ON/OFF switch, the device will not retain any settings changes you have made.

● **Adjusting the volume:** In Music, Record, Radio modes, press the VOL- or VOL+ buttons to decrease or increase the volume.

● **Charging the player:** To charge your player, set the ON/OFF switch to the ON position and connect the device to a powered USB port.

Loading Files

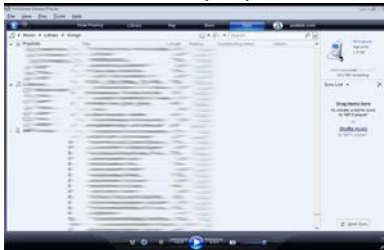
Using Windows Media Player

(Note: you must use Windows Media Player 10 or later to use this feature.)

(Note: this player does not support DRM encrypted audio files, such as those downloaded from the Overdrive download service.)

1. Open Windows Media Player and connect the MP3 player to a working USB port.

2. Open the Windows Media Player Sync tab.



3. Drag your music to the sync list (on the right of the screen) from the list on the left. Once you have selected the music you wish to add to the player, press “Start Sync”.



4. Windows Media player will load the songs on to your MP3 player.



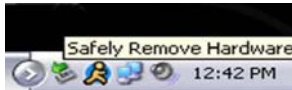
5. Once all the songs you have added are synced to the unit, and Windows Media Player says that is safe to disconnect your MP3 player, disconnect the device.



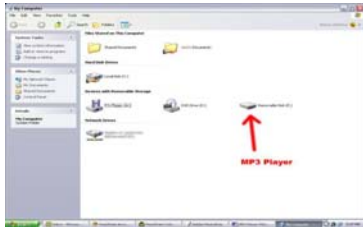
COPY AND PASTE

NOTE- This method is also used to load your lyric or text files to the player.

1. Connect the MP3 player to a working USB port.
2. When the unit is connected to your computer, it will create a gray and green icon in the system tray (lower right hand corner of your desktop). The icon will be called safely remove hardware.



3. Go to the “My Computer” section of your computer. In there you will find a section called “devices with removable storage”

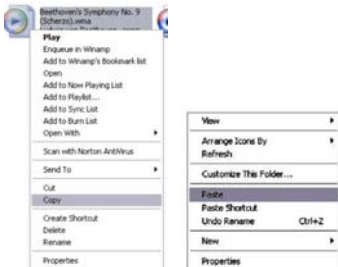


4. Locate the drive created by the unit, generally just called Removable Disk, with a letter in Parenthesis. Drive letters vary depending on your system configuration.
5. Open the drive by either double left clicking on the drive itself, or by right clicking to open the option menu then left click on the desired drive.



6. Locate the music stored on your computer. Generally this is stored in the "My Music" folder of your computer. NOTE: if you are unable to locate the music on your computer, click on start, search, files and folders, then search for "*.MP3".
7. Once you have located the song files, you can right click on the song itself, and select "copy". Open the removable disk drive, right click

on in the empty space, and select Paste. This will transfer the song on to your MP3 player.



8. Repeat step 7 for as many songs as you want to copy on to the unit.

NOTE: MAC Computers

When connected to your MAC computer, the device will act as a removable drive. Simply drag your MP3 files to the device.

Music Mode



NOTE- This player supports audio files in MP3 or non encrypted WMA formats. If your files are not in these formats, they will not play.

On the main menu, select “Music” using the Previous or Next buttons, and then press the Menu button to enter the Music mode. when you enter Music mode, the first song in the list will begin playing automatically.

While playing music

Press the Play button to pause a file, press again to resume playback. Press and hold the Next or Previous Buttons to fast forward or rewind. Briefly press the Next or Previous Buttons to skip to the previous or next track.

Press and hold the Menu button to return to the Main Menu.

Briefly press the Menu button to display a list of the files loaded; press

the Next or Previous buttons to select the file or folder you wish to access, then press Menu button to play. Press the VOL+ button to return to previous screen.

Note: To set your repeat mode, play mode, or EQ mode, go to Setting, then Music menu.

Radio Mode



NOTE- Before entering Radio mode, please insert your headphones, as they act as an antenna.

On the main menu, select “Radio” using the Previous or Next buttons, and then press the Menu button to enter the Radio mode.

When in Radio Mode, briefly press the Menu button to display the Radio Mode Submenu. Press and hold the Menu button to return to the Main Menu.

Radio Mode Submenu

Press the Menu button to make a selection, or the VOL+ button to exit the menu.

Manual- Sets the tuner to manual search. Press the Next or Previous buttons to browse through frequencies.

Auto-Automatically scans the available stations and saves any with a strong signal as a preset. This will override any presets you have manually saved.

Preset- Listen the preset stations which you have manually saved or were saved by Auto scan. Press the Next or Previous buttons to browse through Saved Presets.

Mem- This option allows you to save the current station as a preset.

Del- This will remove all presets from memory.

Record Mode



On the main menu, select “Record” using the Previous or Next buttons, and then press the Menu button to enter the Recording mode.

In Recording mode, briefly press the Play button to begin recording, and when finished, briefly press the Play button again to pause it.

Briefly press the Menu button to save the current recording and begin a new one. Recordings you have created are accessed in the Music Mode.

Text Mode



NOTE- This player will only access text files in TXT and LRC formats.

On the main menu, select “Text” using the Previous or Next buttons, and then press the Menu button to enter the Text Reader mode. Press the Next or Previous buttons to flip pages, or press the Play button to begin auto browsing. Briefly press the Menu button to display a list of the files loaded; press the Next or Previous buttons to select the file or folder you wish to access, then press Menu button to play. Press the VOL+ button to return to previous screen.

Explorer Mode



On the main menu, select “Explorer” using the Previous or Next buttons, and then press the Menu button to enter the Explorer mode. Press the Next or Previous buttons to select the file or folder you wish to access, then press Menu button to play. Press the VOL+ button to return to previous screen.

To delete a selected file, press the Play button and a dialog box will come up asking whether you wish to delete the file or not, select yes or no, and briefly press the Menu button to confirm your selection.

Settings Mode



On the main menu, select “Settings” using the Previous or Next buttons, and then press the Menu button to enter the Settings mode. Use the Next or Previous buttons to select an item, and the Menu button to confirm. Briefly press the VOL+ button to return to the previous screen. Press and hold the Menu button to return to the Main Menu.

Music

- **Repeat Mode-** Allows you to set the audio repeat mode.

Once (Play a single file one time), Repeat One (Plays a single file over and over again), Folder Once (Play the files in a single folder one time), All Once (Play all of the files in this selection one time), All Repeat (play all of the files in this selection over and over again),Intro (play the first 10 seconds of each track)

- **Play Mode-**Allows you to alternate between playing your files in order or shuffle.
- **EQ Select-** Select one of several Equalizer settings to apply to your audio files.
- **MS PlayFX setting-** Allows you to alternate between 3D Headphone and Pure Bass.

Text Settings

- **Auto play Time-** Sets up a function that will automatically flip the pages for you on a timer.

Radio Submenu

- **Stereo Switch-** flip between stereo or mono reception.
- **FM Region-** You can select your local region.

Display Submenu

Allows you to change display settings and power savings options.

- **Backlight Time-** This allows you to adjust the length (in seconds) that the screen will stay lit when not used. The smaller the time increment, the longer your player will last between charges. Default 15s.

- **Backlight Display Mode-** If you are not listen to music or read the text, the player will power the screen off to conserve battery life. The default is set to Power save, and we recommend leaving this to extend battery life.

Power Off

Set a timer to power the device off. This is designed for those of us who listen to music as we fall asleep.

Language

Set your display language.

System Information

Displays relevant system information including the firmware version, and memory. Also, you also can restore to the default settings here.

If at any point, you have questions about your player or experience an issue with your player, please feel free to contact our technicians at mssupport@machspeed.com or by phone at 580 272 0035.



35 free songs

+1 free audiobook

- Choose from over 5 million songs and over 5,000 audiobooks
- DRM-free tracks play on your PC, Mach Speed media player, and any MP3 player
- Free 14-day trial—Cancel anytime, keep your downloads

To redeem your free mp3s, go to:



emusic.com/machspeer



Get up to 35 music downloads and 1 audiobook free with 14-day eMusic trial subscriptions. Offers available to first-time eMusic customers only. Separate subscriptions required. Audiobook offer valid for one audiobook credit; some titles require multiple credits for download. Internet access, registration, and credit or debit card required. Limited time offer. Offers and eMusic's prices are subject to change without notice and are subject to eMusic's terms of use. eMusic and the eMusic logo are either registered trademarks or trademarks of eMusic.com Inc in the USA and other countries. All rights reserved. eMusic is not responsible for products, services, or claims made by Mach Speed.