

---

*CLD2BL*

## User's Manual



Thank you for your purchase.  
Please read this manual carefully  
before using your player

## Note

Congratulations on purchasing your MP3 player! To get the most out of your purchase, please take the time to carefully read through this manual.



If you have any remaining questions, comments, or concerns please feel free to contact Mach Speed technical support at 580- 272-0035 or by email at [mssupport@machspeed.com](mailto:mssupport@machspeed.com). Thank you for your support and cooperation!

We bear no responsibility for any damage or loss of personal data due to misuse of software and/or hardware, damage to the player caused by human factors, replacement of battery or other unforeseen circumstances. To prevent data loss, please backup your data regularly.

Information in the manual is subject to change without notice.

Information in the User's Manual is subject to copyright protection. Without prior written permission, photocopying or copying is prohibited.

Some of the pictures or functions described in this manual may not be the same as those included with your player.

- If you do not use your MP3 player for an extended period of time, please switch it off.
- Avoid using your MP3 player in extremely hot, cold, dusty or wet conditions.
- Avoid striking or dropping your MP3 player, as it may cause physical damage, battery loosening, or other hardware damage.
- Please charge the player under the following conditions:
  - The battery icon shows  in normal operation with low battery prompt.
  - The player turns off automatically.
  - There is no response when pressing keys and the battery icon shows .
- Static electricity may cause damage to interior hardware of the player.
- Do not disconnect the player while formatting, uploading, or downloading files to the player, as it

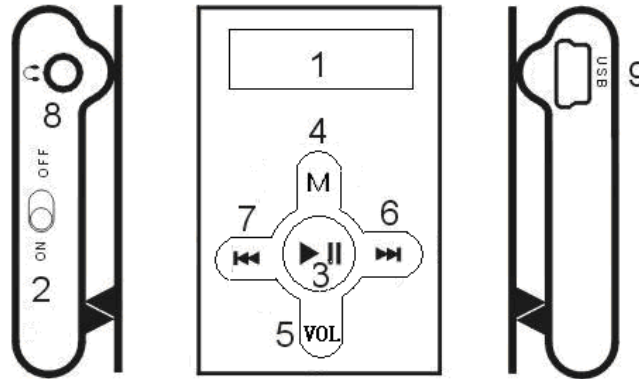
may cause program errors, or cause the unit to not power on.

- When the player is used as a removable hard disk, user should store files following correct file management methods. We are not liable for any data loss or damage.
- Do not disassemble this product for any reason. Disassembling this player will void all warranties associated with the player. If you have any issues or questions, please contact our technical support department.

## Contents

<b>COMPUTER COMMUNICATION .....</b>	<b>8</b>
<b>CHAPTER 2 INTRODUCTION TO YOUR PLAYER.....</b>	<b>ERROR: REFERENCE SOURCE NOT FOUND</b>
● <b>FUNCTION KEY ILLUSTRATION.....</b>	<b>ERROR: REFERENCE SOURCE NOT FOUND</b>
● <b>BASIC OPERATION.....</b>	<b>ERROR: REFERENCE SOURCE NOT FOUND</b>
● <b>FOR CHARGE.....</b>	<b>ERROR: REFERENCE SOURCE NOT FOUND</b>
● <b>USE AS AN USB DRIVE.....</b>	<b>ERROR: REFERENCE SOURCE NOT FOUND</b>
<b>CHAPTER 3 REFERENCES TO USER.....</b>	<b>ERROR: REFERENCE SOURCE NOT FOUND</b>
<b>3.1 TROUBLE-SHOOTING.....</b>	<b>ERROR: REFERENCE SOURCE NOT FOUND</b>
<b>3.2 SPECIFICATIONS.....</b>	<b>ERROR: REFERENCE SOURCE NOT FOUND</b>


## Introduction to your player




### ● Function key illustration

1. LCD screen
2. ON—OFF: Power switch
3. : PLAY
4. M: Menu/ A-B
5. VOL: Volume button
6. : NEXT
7. : PREV
8. Ear Piece Socket
9. USB jack

## ● Basic operation

▲ **Power On:** Set the power switch to the ON position, and press and hold the  button to power on.

▲ **Power Off:** Press and hold the  button to power off. You can then set the power switch to the OFF position, but doing so will erase any system changes you made.

▲ **Charging the battery:** To charge the battery, set the power switch to the ON position, and connect the player to a powered USB port. While the player is charging, you can load files to the player. Please charge the battery from 3-5 hours to completely charge the battery.

## Music mode

To play your music files, you will enter music mode. On the main menu, use the NEXT and PREV buttons to highlight the “MSC” mode and briefly press the “M” button. This will display your current song. To play the file you can press PLAY. To pause the file, press PLAY again.

While a file is playing you can enter the Music Submenu by pressing the “M” button briefly. The Music Submenu allows you to adjust your repeat mode, Equalizer, Tempo rate, Activate the A-B Replay mode, and set the number of times you’re A-B replay will play, and the gap between plays. The functions are described below.

- Repeat- Allows you to set your repeat mode. Choose from Normal, Repeat One, Folder, Repeat folder, Repeat all, Random, and Intro.
- Equalizer- Allows you to set your equalizer. Choose from Natural, Rock, Pop, Classic, Soft, Jazz,

---

and DBB.

- Tempo- Allows you to adjust the temp of your audio. You can select from 80% slower to 80% faster, adjusted in 10% increments.
- Replay- Enters the A-B repeat mode. Once you select this item, you will be returned to the music file. Press NEXT to select the “A” point (starting point) and press NEXT again to select the “B” point (ending point). Press NEXT a third time to begin playing your selection.
- Replay times- Allows you to select the number of times your A-B repeat selection will play
- Replay gap- Allows you to set the gap between A-B replays.

All menu selections are made by using the NEXT and PREV buttons to select your option, and pressing “M” to confirm the selection.

When a file is played or stopped, you can enter the file management menu by pressing the “M” button. Once in the file management menu, you can select local folder, which allows you select the file you wish to play; delete, which will delete the current file; or delete all, which will delete all of the files on the player.

In the local folder, use the NEXT and PREV keys to select the file you wish to play, and press the “M” button to confirm. This will bring up the file, and you will press PLAY to begin playing.

At any time, you can press and hold the “M” button to return to the main menu.

## System Settings

The System Settings mode allows you to adjust most of your system settings. On the main menu, use

---

PREV and NEXT to highlight “SYS” and briefly press the “M” button.

- System Time- Allows you to set the system time. This is used to make time stamps on your recordings. Use the VOL button to switch between items, and NEXT and PREV to adjust the items. Press “M” when finished.
- Backlight- Allows you to adjust the backlight duration after a button is pressed. The higher the value set, the longer the light will stay lit. Use NEXT and PREV to adjust the value, and press “M” when finished.
- Language- Allows you to set the display language. Use NEXT and PREV to adjust the value, and press “M” when finished.
- Power off-Allows you to set the off time, and sleep time Use NEXT and PREV to adjust the value, and press “M” when finished.
  - Off time- This value determines how many minutes the player will power off in if the system is idle. Setting this value to 0 will disable this feature.
  - Sleep time- this value determines how many seconds after the system is idle before it enters standby mode. Setting this value to 0 will disable this feature.
- Replay Mode- Allows you to set you’re a-B replay mode to either a manual or automatic play. Use NEXT and PREV to adjust the value, and press “M” when finished.
- Contrast- Allows you to adjust the screen contrast to make the screen easier to view. Use NEXT and PREV to adjust the value, and press “M” when finished.
- Online Mode- An advanced user mode which allows greater control when connected to your computer.
- Memory Info- Displays the memory information.
- Version- Displays the current firmware version.
- Firmware update- An advanced user mode used when updating the firmware. We do not recommend using this mode unless directed to by a technician.

- Exit- returns to the main menu.

# Computer Communication

## Using Windows Media Player

*(Note: you must use Windows Media Player 10 or later to use this feature.)*

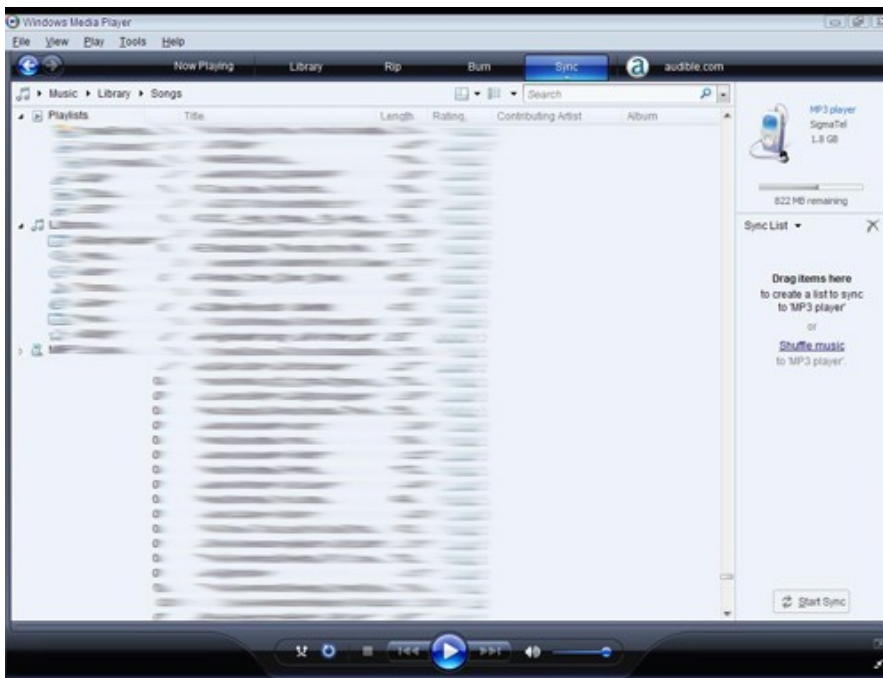
*(Note: this player does not support DRM encrypted audio files, such as those downloaded from the Windows Media Player download service.)*

1. Open Windows Media Player and connect the MP3 player to a working USB port. Windows Media player will prompt you with a setup screen asking you to name the MP3 player.

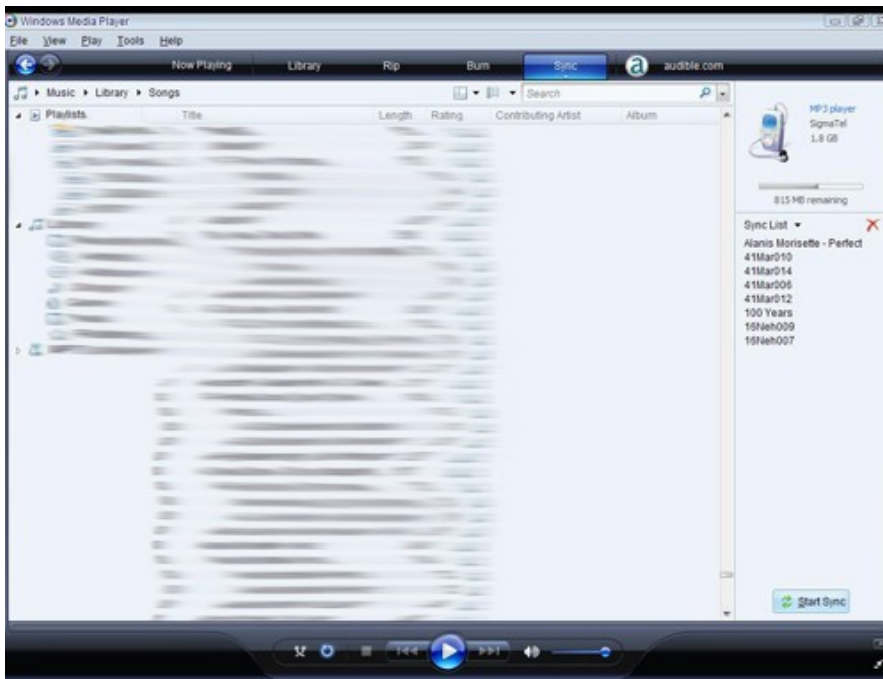




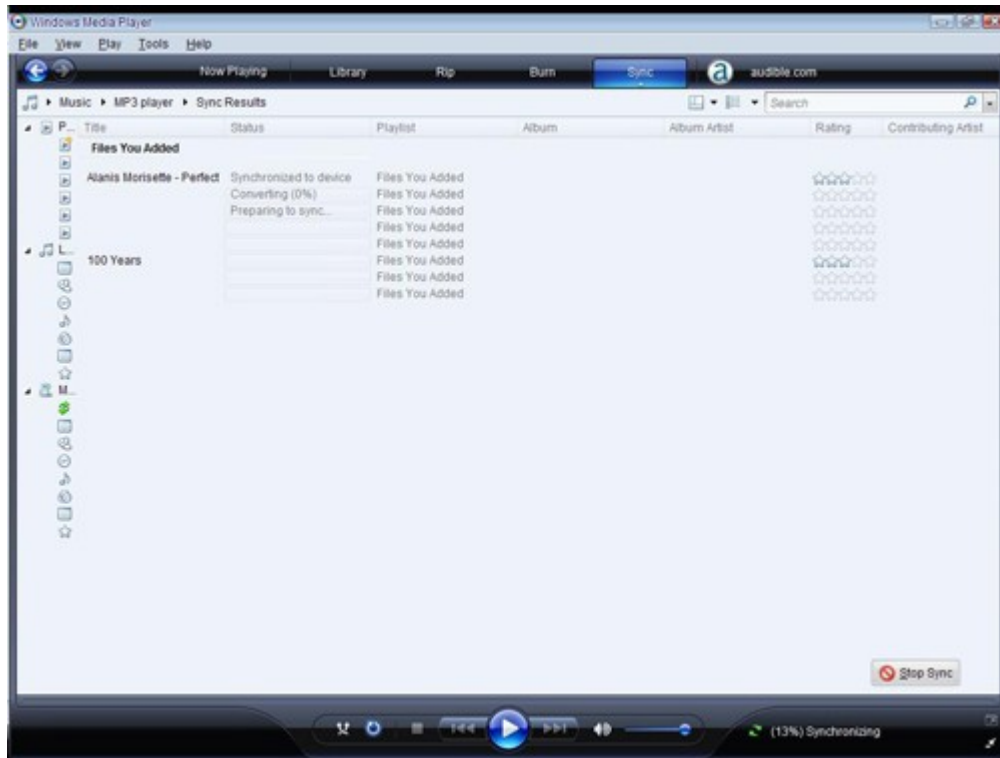
2. Once you have named your MP3 player, select Finish, and your Windows Media Player will open to the Sync tab.



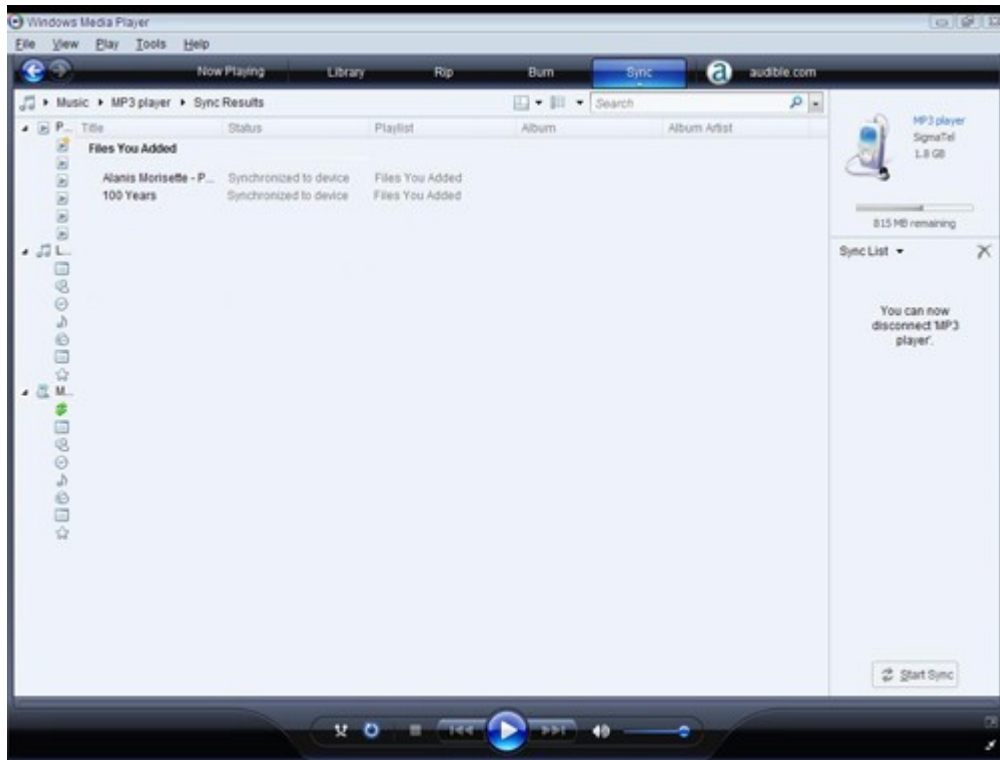
3. Drag your music to the sync list (on the right of the screen) from the list on the left. Once you have selected the music you wish to add to the player, press Sync.



3. Windows Media player will load the songs on to your MP3 player.



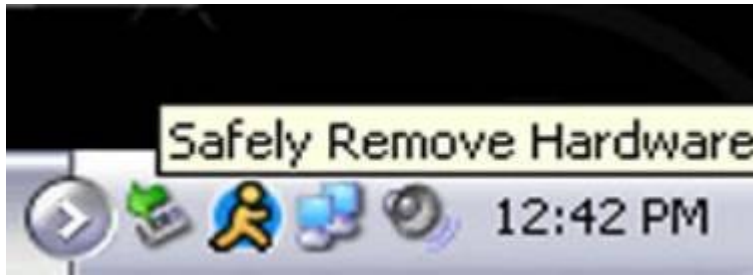
4. Once all the songs you have added are synced to the unit, and Windows Media Player says that is safe to disconnect your MP3 player, disconnect the device.



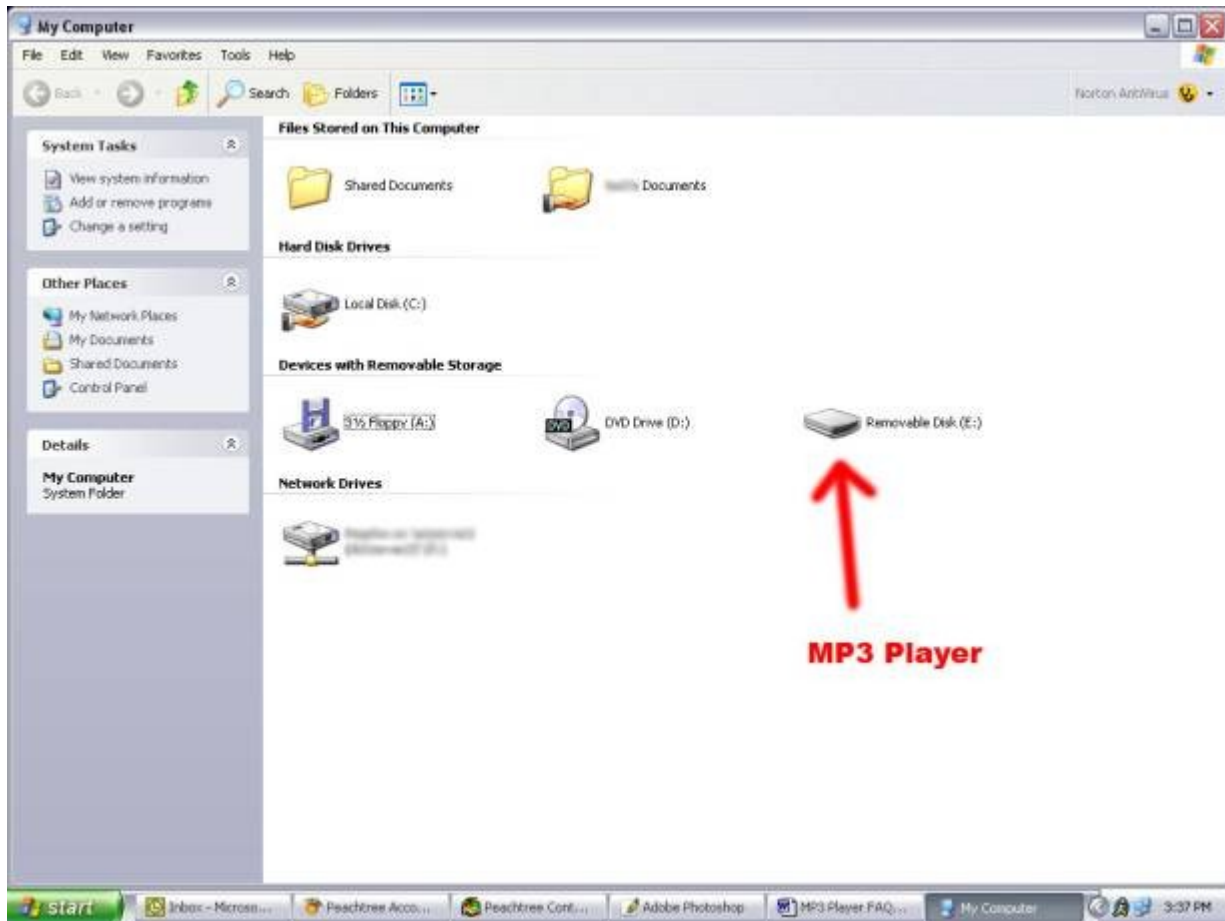
## COPY AND PASTE

1. Connect the MP3 player to a working USB port.

2. When the unit is connected to your computer, it will create a gray and green icon in the system tray (lower right hand corner of your desktop). The icon will be called safely remove hardware.



3. Go to the "My Computer" section of your computer. In there you will find a section called "devices with removable storage"



4. Locate the drive created by the unit, generally just called Removable Disk, with a letter in Parenthesis. Drive letters vary depending on your system configuration.
5. Open the drive by either double left clicking on the drive itself, or by right clicking to open the

option menu then left click on the desired drive.



6. Locate the music stored on your computer. Generally this is stored in the "My Music" folder of



your computer. NOTE: if you are unable to locate the music on your computer, click on start, search, files and folders, then search for “.MP3, \*.WMA”.

**Search by any or all of the criteria below.**

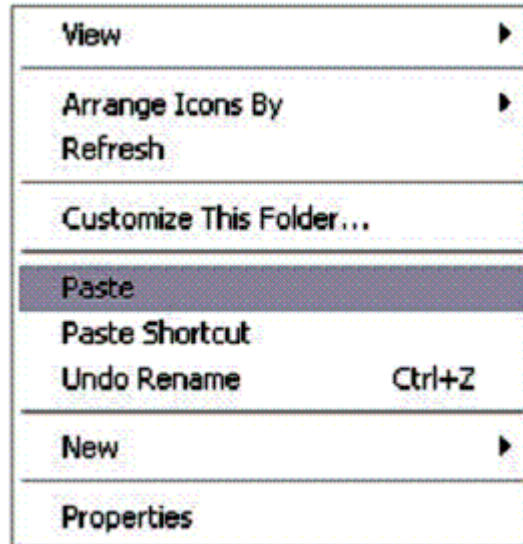
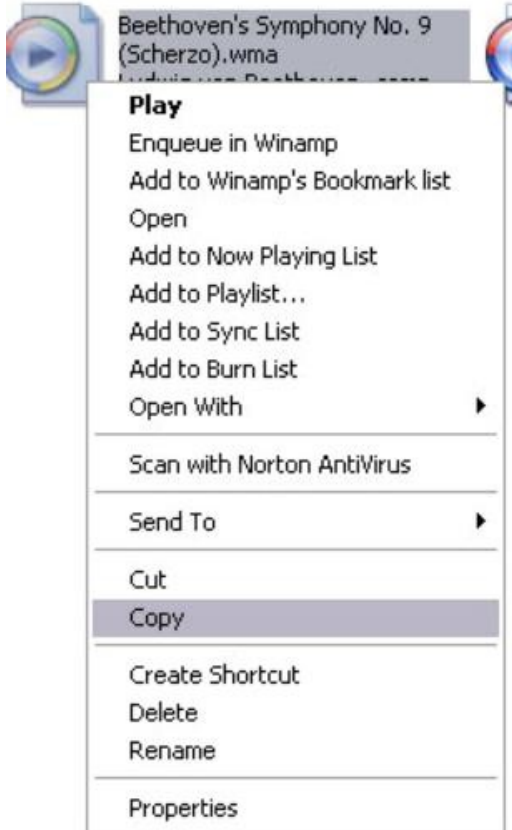
All or part of the file name:

A word or phrase in the file:

Look in:

**When was it modified?****What size is it?****More advanced options**

7. Once you have located the song files, you can right click on the song itself, and select "copy". Open the removable disk drive, right click on in the empty space, and select Paste. This will transfer the song on to your MP3 player.



8. Repeat step 7 for as many songs as you want to copy on to the unit.

**NOTE: MAC Computers**

When connected to your MAC computer, the device will act as a removable drive. Simply drag your MP3 files to the device.

**3.2 Specifications**

Display screen	LCM 96*24	
USB specification	High Speed USB2.0	
Memory	Flash: 64M~4G	
Power Source	Up to 4hrs music playback time.	
MP3, WMA	Headphone maximum output	(L) 10mW+ (R) 10mW (32Ohm)
	MP3 bit rate	8K bps – 320K bps
	WMA bit rate	64K bps – 320K bps
	Frequency response	20Hz~20KHz
	SNR	65dB
	Distortion rate	(0.1%)
Music format	MP3, WMA	
Support operating temperature	-10C to 40C	
Language	Simplified Chinese, traditional Chinese, English, French, Portuguese etc.	
Support operating system	Windows98SE/ME/2K/XP/Vista、Mac OS 10.4 above.	