



Pub. 988-0148-841

With you every turn of the way™



way™ 350c

Turn-by-Turn Mapping GPS and MP3 Player Operation Instructions



Accessory Ordering Information for all countries

To order Lowrance GPS accessories, please contact:

1) Your local sporting goods, marine, aviation, automobile or consumer electronics store. Most quality dealers that handle outdoor electronic equipment or other consumer electronics should be able to assist you with these items.

To locate a Lowrance dealer near you, visit our web site, and look for the Dealer Locator (www.lowrance.com/support/dealerlocator). Or, you can consult your telephone directory for listings.

2) U.S. customers: LEI Extras Inc., PO Box 129, Catoosa, OK 74015-0129
Call 1-800-324-0045 or visit our web site www.lei-extras.com.

3) Canadian customers can write:

Lowrance/Eagle Canada, 919 Matheson Blvd. E. Mississauga, Ontario L4W2R7 or fax 905-629-3118.

Shipping Information

If it becomes necessary to send a product for repair or replacement, you must first receive a return authorization number from Customer Service. Products shipped without a return authorization will not be accepted. When shipping, we recommend you do the following:

- 1.** Please do not ship the knobs or mounting bracket with your unit.
- 2.** If you are sending a check for repair, please place your check in an envelope and tape it to the unit.
- 3.** For proper testing, include a brief note with the product describing the problem. Be sure to include your name, return shipping address and a daytime telephone number. An e-mail address is optional but useful.
- 4.** Pack the unit in a suitable size box with packing material to prevent any damage during shipping.
- 5.** Write the Return Authorization (RA) number on the outside of the box underneath your return address.
- 6.** For your security, you may want to insure the package through your shipping courier. Lowrance does not assume responsibility for goods lost or damaged in transit.

Visit our web site:



With you every turn of the way™

Table of Contents

Preface: Introducing GPS	1
How Lowrance GPS and the GPS System Work.....	2
Section 1: Installation & Accessories	3
Power Cable	3
External Power and Standby Mode	4
External Connections.....	4
USB-to-PC Cable Connection.....	4
MMC or SD Card.....	4
Getting Music (or Pictures) on Your iWAY	5
Mounting Brackets.....	5
Other Accessories	6
Moving On: iWAY Operation.....	6
Section 2: Mapping Mode Operation	7
The Power Button	7
Using the Touch Screen.....	7
"Press and Drag"	8
Closing Menus	8
The Main Menu	8
Map and Music	9
Options Menu	9
Find	9
Map Mode Practice Run	11
The Map Mode Display and On-Screen Commands	12
Using the Menu Button	13
Using the Speak Instruction Button.....	13
Using the Map Display Toolbar	13
Using the Map Orientation Button.....	15
Using the Location Information Button	15
Creating and Saving Contacts.....	16
Selecting a Contact.....	16
Editing a Contact	17
Deleting a Contact.....	17
Navigating to a Contact.....	17
Section 3: Music Mode Operation	18
The Power Button	18
Using the Touch Screen.....	18
The Main Menu	18
Map and Music	19
Options Menu	19
Find	19
Music Mode Practice Run	20
The Music Mode Display and On-Screen Commands.....	21

Using the Play Control Buttons	22
Using the Now Playing Box to Launch Music Browser.....	23
Visualization Effects – Waveform/Spectrum Analyzer	23
Music Browser	23
Find Music	24
Shuffle (On/Off)	24
Repeat (On/Off).....	25
Setup Equalizer.....	25
Section 4: Pictures, Gauge, and Options Menu	26
Pictures Slideshow	26
Gauge Page	27
Options Menu – Page One	27
Directions List	28
Auto Zoom (On/Off)	29
Overlay Data Setup.....	29
Route Via Waypoints.....	30
AutoSort	31
Cancel Navigation	31
Routing Options.....	32
Avoid Cross-Traffic Turns.....	33
Prefer/Avoid Toll Roads	33
Prefer/Avoid Interstates.....	33
Turn Preview	33
Options Menu – Page Two.....	34
Categories Drawn.....	35
My Trails.....	36
Trip Calculator	37
Trip Active	37
Reset Trip.....	38
Threshold	38
Calculated Data	38
Safety Mode (On/Off).....	38
Sound and Voice Setup	39
Interface Setup	40
Skin Selection	41
Keyboard	41
Brightness.....	41
Transparency	42
Contrast	42
Calibrate Screen	42
Standby Mode vs. Power Off Mode.....	43
Options Menu – Page Three	43
Units of Measure	44

Reset Options.....	44
Device Information.....	45
GPS Status.....	45
Current Position Lock	46
EPE (Estimated Position Error).....	46
Satellite Display	47
Lat/Lon Coordinates.....	47
Transfer Data	47
GPS Simulator.....	47
Section 5: Searching, Finding, and Navigating.....	49
Using the iWAY's Virtual Keyboard.....	50
Find Gas and ATMs, Lodging, and Restaurants.....	51
Using the Name Filter	52
Navigating to the Selected POI.....	53
Recent Destinations	54
Find Address.....	54
Address Book	56
Other Pages	56
Intersections	57
Find a Street	58
Find an Intersection	58
Choosing New Destinations while Navigating.....	58
Following a Generated Route.....	59
Knowing the Area.....	60
Using Turn Preview and the Directions List	60
Considering Temporary or Local Conditions.....	61
Index	63

WARNING!

A CAREFUL NAVIGATOR NEVER RELIES ON ONLY ONE METHOD TO OBTAIN POSITION INFORMATION.

CAUTION

When showing turn-by-turn navigation data, a GPS unit will show the shortest, most direct route to the destination. There are times when it may give directions, such as a U-turn, that may be prohibited in some locations. While navigating, a driver is responsible for noting all traffic signs and obeying all local traffic laws. When following turn-by-turn directions, a driver must take advantage of all available navigation tools, and must visually check to make sure a clear, safe path to the next destination is available.

WARNING!

When a GPS unit is used in a vehicle, the vehicle operator is solely responsible for operating the vehicle in a safe manner. Vehicle operators must maintain full surveillance of all pertinent driving conditions at all times. An accident or collision resulting in damage to property, personal injury or death could occur if the operator of a GPS-equipped vehicle fails to pay full attention to travel conditions and vehicle operation while the vehicle is in motion.

Do not attempt to configure, adjust or enter information into your GPS unit while driving.

Preface: Introducing GPS

And, how this manual can get you out on the road, fast!

Welcome to the exciting world of turn-by-turn GPS navigation! We know you're anxious to begin finding your way, but we have a favor to ask. Before you grab the iWAY™ 350c and begin installing it, please give us a moment or two to explain how our manual can help you get the best performance from your mapping GPS receiver and MP3 music player.

Our goal for this book is to get you on the road fast, with a minimum of fuss. Like you, we'd rather spend more time actually getting somewhere and less time reading about it in the manual!

So, we designed our book so that you *don't* have to read the *whole thing* from front to back for the information you want. At the start (or end) of each segment, we'll tell you what content is coming up next. If it's a concept you're already familiar with, we'll show you how and where to skip ahead for the next important topic. We've also made it easy to look up any tips you may need from time to time. Here's how:

The manual is organized into five sections. This preface will introduce you to GPS, your iWAY 350 and the manual's organization. The first section will help you install the iWAY in your vehicle. We'll also show you how to use the USB cable to connect the iWAY to your PC. We'll finish by describing some of the available accessories.

Section 2 covers *Mapping Mode Operation*. It will show you how easy it is to run the iWAY 350, right out of the box. This section features a one-page GPS Practice Run. **(If you've already jumped ahead and figured out how to install the unit yourself, and you just *can't* wait any longer, turn to the Practice Run on page 11 and head for the road with your GPS unit!)**

In Section 3, we leave Mapping mode and introduce you to *Music Mode Operation*. We'll tell you everything you need to know about getting music into your iWAY, arranging the files on your memory card and creating and using play lists. We'll also explain how you can easily browse music on your iWAY and listen to your favorite tunes while navigating! **If you're in a hurry to get some music playing, skip to the Music Practice Run on Page 20 and start copying music to your iWAY!**

Section 4 describes the Options Menu, the commands used to configure things like screen brightness, sound levels and units of measure. We'll also show you how to use utilities like the Trip Calculator.

Finally, in Section 5, we'll go into detail on how to search for and navigate to points of interest, addresses and contacts you've created. We'll also offer tips on how to understand and follow the automatic turn-by-turn routes you've created. Before we go any further, we'd like to take just a moment to explain how the iWAY works.

How Lowrance GPS and the GPS System Work

You'll navigate a little easier if you understand the basics of how the iWAY 350 scans the sky to tell you where you are and where you're going. (If you already understand GPS receivers and the GPS system, skip on ahead to Section 1, *Installation & Accessories* on page 3.)

First, think of your unit as a small, highly automated computer. The iWAY 350 includes a touch powerful screen with several menus so you can tell it what to do. The screen also lets the unit show your location on a moving map, as well as point the way to your destination. A speaker lets you hear verbal turn-by-turn driving instructions, as well as MP3 music files.

An internal antenna tunes in to a couple of dozen GPS and WAAS satellites circling the earth. Your unit listens to signals from as many satellites as it can "see" above the horizon, then computes its location in relation to those satellites. The iWAY 350 plots that position on the moving map shown on the screen.

A hard drive contains highly detailed road and highway mapping data for Hawaii, the 48 contiguous United States and most of Canada. You can't change or erase the map. Another partition of the hard drive is available for you to store MP3 music files. The iWAY's memory also records GPS data you create, such as address book contacts.

GPS stands for Global Positioning System, a navigational system that can accurately locate your position anywhere on the Earth. This technology is available to everyone, everywhere, 24 hours a day, in all weather conditions. GPS uses 24 satellites orbiting 10,900 miles above the Earth to transmit position data back to Earth. A GPS receiver processes that data to tell you where you are.

For the system to work, the unit must have a clear view of the satellites in order to receive their signals. Unlike radio or television signals, GPS works at very high frequencies. These signals can be easily blocked by trees, buildings, an automobile roof, even your body.

If you would like to know more about GPS and its companion system WAAS, visit our web site and check out the GPS Product Guide section (www.lowrance.com/Support/gps.asp). It includes a GPS tutorial, frequently asked questions and a glossary.

NOTE:

The iWAY is controlled using a pressure-sensitive touch screen. In this manual, the touch screen "keystrokes" appear as boldface type. So, if you're in a real hurry when you're looking up instructions (or if you just need a reminder), you can skim the instructions and pick out what menu command to use by finding the boldface command text.

Section 1: Installation & Accessories

This section describes the various accessories and cables that came with your iWAY, and exactly how to use them. Some of the most important information in this section is how to connect the iWAY to your car's power, and how to use the USB-to-PC cable to add songs or picture files to your MMC or SD Card.

If you need help using any of these accessories, look through this section. Otherwise, move on to *Section 2: Mapping Mode Operation* beginning on page 7. You can also turn to the beginning of Sec. 3 on page 18 if you'd rather start learning about iWAY's Music Mode.

Power Cable

The iWAY operates on internal rechargeable batteries. When the included power cable is connected, the iWAY draws power directly from the power cable and recharges the internal batteries. The power cable is designed to plug into a car's cigarette lighter. An optional power adapter for home use is also available.



The iWAY 350 Power cable.

Flash memory will keep your stored data safe and accessible for the life of the product — after the unit is turned off, no battery or external power is needed to store your data.

To use the power cable, simply plug the cable's cigarette lighter adapter into a cigarette lighter receptacle. Then insert the other end of the cable into the power socket on the back of the unit, as shown in the following image.



Attach power cable to iWAY.

NOTE:

When operating on external power, the iWAY is designed to enter a Standby mode if the external power source fails. For full details, see the discussion of power button functions in Sec. 4.

External Power and Standby Mode

The iWAY has an optional Standby Mode (it is on, by default), which allows the unit to conserve power while still monitoring your current position. When the iWAY is in Standby Mode, it will activate quickly when turned on.

If the iWAY is running on external power, and that power source is removed, the iWAY will display a dialog warning you that it is about to enter Standby Mode. If you want to keep operating the iWAY, you can simply touch the screen to interrupt this automatic Standby.

However, if the iWAY does enter Standby in this manner, it will automatically restart (or "wake up") as soon as external power is reconnected.

Tip:

These features of Standby Mode can be particularly handy in vehicles where the ignition controls the cigarette lighter. In such vehicles, simply connect the iWAY to external power, and then turning the car off will automatically place the iWAY in Standby, and starting the car will restart the iWAY.

External Connections

On the right side of your iWAY 350, you will find 3 sockets for external connections. These are, from top to bottom, the USB cable connection (for software updates), the headphone connection (which also works as a line-out, for vehicles with an auxiliary line input to the stereo system), and the power connection (described earlier).

USB-to-PC Cable Connection

The iWAY comes with a special cable designed to allow you to copy files from your computer to the iWAY's MMC or SD Card. In this way, the iWAY acts like a card reader. Please read the supplemental document *Making USB Connections Between iWAY 350c and Computers* (which was included with this unit) for details on attaching and using the USB-to-PC Cable Connection.

MMC or SD Card

On the left side your iWAY, you will find the MMC or SD Card slot, as shown in the following images. You will need an MMC (or SD) card to play music or a photo slideshow. The iWAY automatically searches the memory card for media files it can play.

To insert an MMC card, hold it so that the label faces forward, and slide it into the slot, pushing with your fingernail until the card locks in place. To remove the card, again use your fingernail to push the card, which will release the catch and eject the card.



The MMC slot can be found on the left side of the iWAY.

Getting Music (or Pictures) on Your iWAY

Of course, to use your iWAY's Music Mode, you'll need some music files to listen to. The iWAY uses the MMC card to store music (or picture) files. Whenever you switch to Music Mode or launch the Pictures slideshow, the iWAY automatically searches the memory card for media files it can play.

With the memory card inserted in the unit, use the provided USB-to-PC cable to connect the iWAY to your computer. Once it's connected, you can treat the memory card just like another removable disk on your computer. That means you can add new folders, rename folders or files, and copy and delete files the same way you would on the computer.

Before you copy your music onto the card, consider creating subfolders to sort your music by artist, album or genre – however you prefer to arrange your music. The iWAY makes it easy to play a whole folder at a time, so if you arrange your music well when you're copying it to the card, playing the right songs when you want to hear them will be a breeze.

Once you have the files you want on your MMC or SD Card, the iWAY will be ready to play back them whenever you want.

Mounting Brackets

Several mounting brackets are available for your iWAY, through LEI Extras. There are permanent mounts and temporary mounts suitable for virtually any boat, aircraft or other vehicle, even motorcycle handlebars. Each of these mounts work without screws or adhesives. To safely install your GPS unit in your vehicle, you must refer to the instruction sheet packed with the mounting bracket.

Other Accessories

The iWAY comes with a soft fabric face cover to protect the screen from damage when it's not in use. It simply slips on and off the unit.



The iWAY 350 shown with protective face cover.

A special lint-free, microfiber towel is included for cleaning the unit's screen. The towel is highly effective in clearing away smudges and finger prints. Just wipe the screen with the dry towel — it's not necessary to moisten the towel with water. If you lose the towel or wear it out, you can replace it with a similar microfiber cloth. These are often available where shop towels or auto cleaning towels are sold.

CAUTION:

Do not use any chemical, such as window cleaners, on the iWAY screen or damage may occur. Cleaning fabrics other than the microfiber towel type may scratch the screen. Damage caused by incorrect cleaning is not covered by the warranty. You may wash the towel if it becomes soiled or loses its effectiveness, but do not use fabric softener. Fabric softener will ruin the towel's cleaning capability.

Moving On: iWAY Operation

Now that you've got the iWAY installed and working, it's time to find out how it works. The following section jumps right into a description of Mapping Mode Operation, which will tell you everything you need to know about the iWAY's moving map and the various settings on the map display. If you prefer, you can also skip to the beginning of Sec. 3 on page 18 to start learning about iWAY's Music Mode.

Section 2: Mapping Mode Operation

This section addresses the unit's *Mapping Mode* operation. Mapping Mode includes all navigation features, from finding the nearest restaurant to plotting a road trip across the country. If you would prefer to start out using the built-in music player, skip ahead to Sec. 3, Music Mode Operation.

Before you turn on the unit and find where you are, it's a good idea to learn about the different menus, the two Page screens and how they work together. BUT, if you just can't wait to get navigating, turn to the one-page *Map Mode Practice Run* on page 11.



iWAY 350c GPS unit, front view, showing Map Mode and toolbar.

The Power Button

The Power button turns the unit on and off and activates the backlight. To turn on the unit, press **POWER**. To turn on the backlight, press **POWER** again. The unit has three preset backlight levels to select from. Repeatedly pressing **POWER** will cycle through the backlight settings and turn off the backlight. To turn off the unit (or enter Standby mode), press and hold the **POWER** key for 3 seconds. For complete details concerning Standby mode, see the discussion of power button functions in Sec. 4.

If you find that your iWAY has locked up or become unresponsive, you can force a restart by holding down the **POWER** button for 10-15 seconds.

Using the Touch Screen

As we've already mentioned, you will use the touch screen for most of the iWAY's controls. You will see on-screen toolbars like the one on the left side of the previous image, as well as menus and textual lists that

allow you to select a single entry.

The iWAY touch screen responds to pressure. With practice, you'll learn exactly the right amount of pressure to activate the touch screen controls. Buttons are easy; scrollbars can be a little harder.

NOTE:

From time to time, you may notice a slight delay between pressing an on-screen button and seeing the iWAY respond. This delay is necessary when the iWAY needs to read information from the hard drive before continuing. If the iWAY does not immediately respond to a touch screen command, wait a moment before pressing it again, as the unit may be processing still.

"Press and Drag"

Some controls, such as the scrollbar or the zoom selection box (which we'll describe later in this section) require you to press and drag an item on the touch screen. We'll use that term throughout this manual, "press and drag," to refer to the motion of selecting an item or location on screen by pressing on it, then maintaining that pressure while you drag the item to a new location on the screen.

Closing Menus

Menus and dialogs that appear on your screen will all have an "X" icon in the top right corner, just like you're used to seeing on your computer at home. Remember that all menus and dialogs can be closed by pressing on this "X."

The Main Menu

When using the iWAY in either Map Mode or Music Mode, press the **MENU** button located in the top left corner of the screen to open the Main Menu. The Main Menu contains commands that let you switch modes, perform searches, or customize the iWAY's behavior.



The iWAY Main Menu.

Map and Music

Use the Map and Music buttons to change the iWAY's mode. Map Mode shows your current position on a moving map, as well as information concerning your current route. Music Mode allows you to choose the audio play list, adjust volume, and set various play controls. The rest of this section concerns Map Mode operation.

Options Menu

The Options Menu has 3 pages full of settings that control iWAY operation or provide additional information. The iWAY works great right out of the box, but as you become more familiar with the unit and what it can do, you'll eventually want to begin tweaking some of these settings.

To access the Options Menu from the Main Menu, simply choose **OPTIONS** and it will appear.

In Sec. 4, we'll describe each of the Options Menu options and commands in detail. All of these options come with default values right out of the box, so you may never need to make changes.

Find

The Find Menu has 3 pages of search options, designed to let you find any destination quickly and easily. See Sec. 5 for details on searching and following a generated route.


The following page contains an 11-step "Practice Run" that will walk you through the most basic Mapping Mode operations. If you don't want to carry the manual with you as you practice with the unit, you might consider photocopying this practice run page and tucking it into your pocket.

Using just the steps outlined here, you can operate your iWAY's Map-

ping Mode well enough to find your current location and find your way to a destination.

Map Mode Practice Run

Start with the iWAY installed in your car. As you practice, try navigating to a location at least a few blocks away. You should start out navigating to a destination you're already familiar with. Don't be too surprised if iWAY suggests a different route than you would take. Try the iWAY's route. Then see the heading "Knowing the Area" in Sec. 5.

1. Connect the unit to your car's power. (See complete installation details beginning on page 3.)
2. To turn on the unit, press and release the **POWER** key.
3. The opening screen displays either a music player or a map of North America. If the Music Mode opens up, press the **MENU** button and choose **MAP** to Map Mode.
4. With your position acquired, press anywhere on the map display to bring up the Map Cursor and the Map Display Toolbar. Here you can:
 - Zoom in** or **Zoom out** using the + and – buttons on the Toolbar.
 - Zoom on an area** using the zoom selection box button on the Toolbar.
 - Scroll map** north, south, east or west by pressing on the map display and dragging the map to show the area you're interested in.
5. Choose your destination. Find an interesting location within a short driving distance from your house, and press on the screen at that location. You'll see the Map Cursor pointing to the position you selected.
6. Press the Location Information button in the top right corner of the page. It looks like the image at right, and can be used to open up detailed information for any item selected on the map. 
7. The Location Information Screen appears, showing details about the location you selected, including its distance away from your current position, and its lat/lon coordinates. Choose **Go To** to begin navigating. The Location Information Screen will disappear, and navigation instructions will begin to appear on your screen.
8. Press the **CLEAR CURSOR** button (the button with a big "X" on it) to close the toolbar. (If Auto Zoom is on, any changes to the zoom level will reset when you Clear Cursor.) Then press the Save Location button (a button with a flag in the top right corner) to mark your starting location. Choose **ADD TO ADDRESS BOOK** and then close all windows to return to the map.
9. Follow the iWAY's directions to the selected location. If you're comfortable finding your way in the area, try departing from the route the iWAY provides to see how it recalculates to correct for wrong or missed turns.
10. To navigate back home, follow steps 5-9, using the contact that you created in step 8 as your destination in step 5.
11. To turn off the unit, press and hold **POWER** key for three seconds.

The Map Mode Display and On-Screen Commands

The Map Mode screen shows your current position and the path of your current route from a "bird's-eye" view. By default, the iWAY shows the map as a 3d view.

NOTE:

This can be changed if you'd prefer to see the map from a different perspective. See the topic *Using the Map Orientation Button*, later in this section.

To switch to Map Mode from Music Mode, press the **MAP** button on the Main Menu. You can do a lot with the Map Mode display. Its basic purpose is to show where you are, and what's around you. The iWAY uses a black arrowhead icon to indicate where you are, and the arrow is pointing the direction you're moving.

When you have the Map Mode displaying your current position, the iWAY will keep this icon in the center of the screen, scrolling the map as you travel so that you can see your surroundings change. If you pass under a highway, you'll see the highway on the map approach your current position icon, then scroll away behind it even as the highway overpass dwindles in your rear-view mirror.

The iWAY uses the Map Mode display to provide you with information about your surroundings. You can also use it to explore locations other than your current position. All of the tools you'll need to operate the Map Mode display are available right on-screen. The Map Mode display looks something like the screen in the following image.



Map Mode display, with all the on-screen command buttons shown.

When tracking your current position, the toolbar buttons on the left of the page are hidden, so that you can see as much of the menu as possible. You can change what's visible on the map display at any time, though, simply by touching the screen. When you do, a map cursor will appear along with a toolbar that contains several map display buttons.

Using the Menu Button

The Menu button appears in the top left corner of the screen. Press this button to show the menus and submenus, which allow you to toggle between Map and Music Mode, search for a destination, select a command or adjust a feature. We'll discuss the Menu in the following pages, and the Options Menu (accessible from the Menu) in Sec. 4.

Using the Speak Instruction Button

This button appears just below the Menu button. Push this button once to make the iWAY repeat the current navigation instruction. (If you're not navigating, the iWAY will speak a short test message.) Whenever the iWAY is speaking an instruction, a volume control slider will appear below the speak button. You can press and drag the control on this slider to quickly adjust the volume.

For more information on sounds options, see the heading "Sound and Voice Setup" in Sec. 4.

Using the Map Display Toolbar

The map display toolbar buttons are used with the touch screen to control what part of the map you see. You can zoom all the way out to see your position relative to the continental U.S., or zoom in close on an area hundreds of miles away to see whether you'll be making a left or right turn at the end of your trip.



Clear Cursor button.

Move Map / Zoom Box button
(press to toggle between modes).

Zoom In button.

Zoom Out button.

The Map Display Toolbar.

The Map Display Toolbar can be made partially transparent, like all of the buttons and overlay boxes that are drawn covering portions of your map. You can control the level of transparency, if you want to make these overlays more readable (by decreasing transparency) or if you want to make the map beneath more visible (by increasing transparency). For details on controlling this and other settings, see Sec. 4: Options Menu.

Clear Cursor immediately clears the cursor and toolbar from the screen and centers the map on your current position.

Move Map or Zoom Box lets you toggle between these two modes:

Move Map Mode lets you drag the map with a touch, focusing on areas other than your current location. When this button is in Move Map Mode, press anywhere on the map display and a cursor will appear. Drag your finger across the screen (still pressing down) and the map and cursor will move with it.

Zoom Box Mode lets you draw a box on the screen and zoom in on the map area within the box. When this button is in Zoom Box Mode, press the screen at the corner of the area you want to select and drag your finger across the area (still pressing down). You will see a box appear on the screen. When the box contains all the area you want to see, lift your finger and the map display will zoom in.

If you're starting at a very wide zoom, Zoom Box can be an extremely helpful way of narrowing down your view to exactly the area you're interested in. Once Zoom Box is activated, you can keep drawing boxes on smaller and smaller areas until you're focused on just what you want to see.

Zoom In and **Zoom Out** change the current zoom level in discreet steps, moving in or out from the *cursor's location*. Control the zoom to get the most detail possible while still showing all of the necessary area. Tap Zoom In once to see a smaller map area in higher detail. Tap Zoom Out once to see more area, with less detail. You can press and hold either zoom button to repeatedly zoom until you reach the right level of detail.

You can use these buttons in combination with the Move Map function to quickly focus on an area other than your current location. Use Zoom Out to show a large enough map that you can quickly drag it to center on the area you're interested in. Then use Zoom In (or the Zoom Box) to fill the map display with only that area.

NOTE:

When activated, the iWAY's Auto Zoom feature controls the map's zoom level any time the cursor isn't showing. This means that any adjustments you make to the zoom with the cursor up will be reset


to a calculated level once you hit **CLEAR CURSOR**. If you would prefer to manually control the zoom level all the time, turn off the Auto Zoom feature, as described later in this section.

Using the Map Orientation Button

There are three different ways to view the map. Whenever the cursor is up, the Map Orientation button can be found in the bottom right corner of the screen. Touch this button to switch among North Up, Track Up, and 3D.

North Up always shows the map with North at the top of the screen. Track Up rotates the map so that the direction you're traveling is at the top of the screen. 3D renders the path ahead from a position above and behind your current position, so that the display on the map more closely matches what you'll actually see through your windshield. Practice some with each mode, and find out which one is right for you.

Using the Location Information Button

There's one more button that appears whenever the cursor is up. The  Location Information button appears in the top right corner of the screen. You can always use this button to bring up a screen showing details on the location selected by the map cursor. This could be a Point of Interest such as a restaurant or gas station, or a contact that you've saved, or simply a map location that you'd like to visit.

As we mentioned, whenever you press the Location Information button, the Location Information Screen appears. The Location Information Screen will include as much information as possible about the location that you've selected. If it's simply a cursor location, this may include only the lat/lon coordinates and the distance and bearing to the location, although a cursor location close to a road will also have the street address. If it's a Point of Interest the information should include street address and even the shop's phone number.



The Location Information Screen for a saved contact (shown left) and for a restaurant POI (shown right).

From the information screen, you can choose to **Go To** the selected location, which makes the iWAY generate a route. This is the easiest way to generate a route to a destination, and we'll use it in the "Map Mode Practice Run." See the heading "Navigating to a Contact" below for details. The command **FIND ON MAP** can be used to center the map on the selected location.

Creating and Saving Contacts

You can use the Location Information button to access information concerning anything from a Point of Interest to a simple cursor position. If you've selected a cursor position, a button labeled "Add to Address Book" will appear on the Location Information Screen. Choose **ADD TO ADDRESS BOOK** from the Location Information Screen to save a contact at the selected location.

NOTE:

You can also create a contact at your current position. If your map cursor is active, choose **CLEAR CURSOR** from the Map Display Toolbar, and the toolbar and cursor will disappear. The Save Location button replaces the Location Information button. This new button looks like the one at right. Press it to save a contact at your current position.



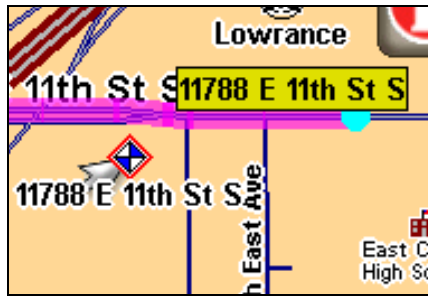
An Edit Contact screen will appear, which includes a textbox containing the contact's name, address and phone number. You can choose to leave the address and phone number fields blank, but any information you add to them will display whenever you open the Location Information screen for that contact. There is also a Choose Symbol button and a small icon showing the contact's current symbol. The contact's lat/lon coordinates are also listed to the right.

To change the contact's name, address, or phone number, simply touch anywhere inside the relevant box, and the iWAY's virtual keyboard will appear, allowing you to enter new information or modify the old.

To change the contact's symbol, select Choose Symbol and a dialog will appear showing the available symbols. Choose the one that best represents the selected location then close the dialog by pressing the "X" in the upper right corner. The new symbol will now appear below the Choose Symbol button (and on the main map display).

Selecting a Contact

You can select any contact by touching its symbol on the map display. When you do, the map cursor will appear pointing directly to the contact and the symbol will be outlined with a red halo. The contact's name will also appear in the pop-up box.



A red halo indicates a selected contact on the map display

Whenever you have a contact selected, you can press the **LOCATION INFORMATION** button to access more information about it. A Location Information Screen will appear, which includes detailed information about the contact as well as buttons to begin navigating to the contact (Go To), to show it on the map, to edit its name and display information, or to delete it from memory.

Editing a Contact

You can edit a contact's name, address, phone number or symbol by selecting it on the map and pushing the **LOCATION INFORMATION** button. Choose **EDIT** from the Location Information Screen.

The Edit Contact screen described earlier under "Creating and Saving Contacts" appears. Make changes precisely as described before.

Deleting a Contact

You can remove a contact from the iWAY by selecting it on the map and pushing the **LOCATION INFORMATION** button. Choose **DELETE** from the Location Information Screen, and the contact will disappear.

Navigating to a Contact

The easiest way to navigate to a saved contact is to treat it like any other cursor position on the map. Use the zoom and Move Map buttons to get the contact on screen, then touch the contact to select it with your cursor.

Press the **LOCATION INFORMATION** button to bring up the Location Information Screen. Choose **Go To** and the iWAY will immediately begin generating a route to the selected contact.

If you have several contacts stored on your iWAY, or don't want to take the time to pan over to one, you can also use the Address Book command from the Find Menu. This method allows you to sort through all of the contacts on the unit either by name or by nearest to your current location. For more details on using the Find Menu, see Sec. 5 beginning on page 49.

Section 3:

Music Mode Operation

This section addresses the unit's *Music Mode* operation. Music Mode is designed as a powerful but simple interface for playing back your music collection while navigating. If you'd rather skip ahead, you can look at Sec. 4 which starts on page 26 and is full of details on setting up and customizing the iWAY's various options. Or you could turn to Sec. 5 starting on page 49, where you'll learn about Searching and how the iWAY generates Turn-by-Turn routes.

Before you start playing your music, it's a good idea to learn about the different menus, the two Page screens and how they work together. If you've already read Sec. 2, then you already know what you need to about the controls, so you can skip ahead to the one-page *Music Mode Practice Run* on page 20.

The Power Button

The Power button turns the unit on and off and activates the backlight. To turn on the unit, press **POWER**. To turn on the backlight, press **POWER** again. The unit has three preset backlight levels to select from. Repeatedly pressing **POWER** will cycle through the backlight settings and turn off the backlight. To turn off the unit (or enter Standby mode), press and hold the **POWER** key for 3 seconds. For complete details concerning Standby mode, see the discussion of power button functions in Sec. 4.

If you find that your iWAY has locked up or become unresponsive, you can force a restart by holding down the **POWER** button for 10-15 seconds.

Using the Touch Screen

At the beginning of Sec. 2 we gave detailed instructions on how to interact with the iWAY's touch screen. If you skipped Sec. 2, you might want to turn back to the heading "Using the Touch Screen" for some handy tips. Otherwise, remember that all menus and dialogs can be closed by pressing on the "X" icon in the menu's top right corner.

The Main Menu

When using the iWAY in either Map Mode or Music Mode, press the **MENU** button located in the top left corner of the screen to open the Main Menu. The Main Menu contains commands that let you switch modes, perform searches, or customize the iWAY's behavior.



The iWAY Main Menu.

Map and Music

Use the Map and Music buttons to change the iWAY's mode. Map Mode shows your current position on a moving map, as well as information concerning your current route. Music Mode allows you to choose the audio play list, adjust volume, and set various play controls. The rest of this section concerns Music Mode operation.

Options Menu

The Options Menu has 3 pages full of settings that control iWAY operation or provide additional information. The iWAY works great right out of the box, but as you become more familiar with the unit and what it can do, you'll eventually want to begin tweaking some of these settings.

To access the Options Menu from the Main Menu, simply choose **OPTIONS** and it will appear.

In Sec. 4, we'll describe each of the Options Menu options and commands in detail. All of these options come with default values right out of the box, so you may never need to make changes.

Find

The Find Menu has 3 pages of search options, designed to let you find any destination quickly and easily. See Sec. 5 for details on searching and following a generated route.

The following page contains an 11-step "Practice Run" that will walk you through the most basic Music Mode operations. Following just the steps outlined here, you can start using the iWAY to listen to your favorite songs in no time.

Music Mode Practice Run

Start at your computer. You should already have some MP3 or Ogg Vorbis music files available. If you need help ripping your CDs to these formats, consult the documentation for the CD ripper software.

1. Insert an MMC or SD Card in your iWAY and connect the iWAY to your computer as described in the supplemental instruction sheet. Browse to the card.
2. Select a few of your favorite songs and copy them onto the card. For now, copy only a few songs and place them in the card's root directory. (Later, you might prefer to set up subfolders in the music drive and organize your music by artist, album or genre.)
3. Once the songs are copied, disconnect the iWAY from your computer, carefully observing the instructions in the supplemental document. Move the iWAY to your car.
4. To turn on the unit, press and release the **POWER** key.
5. The opening screen displays either a map of North America or the music player. If the Map Mode opens up, press the **MENU** button in the top left corner of the screen, then choose the **MUSIC** button to switch to Music Mode.
6. Touch the screen inside the Now Playing box (at the top of the screen) to see a list of the songs available on your card. These should match the songs you just copied there. Using the touch screen, choose one from the list.
7. The song will begin playing. If you haven't changed the output mode, the audio should be playing through the iWAY's built-in speaker (or through headphones, if attached). To play the audio through your car's radio, press the **OUTPUT MODE** button in the bottom left corner of the screen. The volume slider is replaced by a frequency slider. Find an empty frequency on your FM radio, then press and drag the frequency slider to match the frequency of your radio. You should hear the iWAY audio immediately.
8. Cancel the song currently playing by pressing **STOP**. To have iWAY create a play list of all of the songs in the music folder, simply press the **PLAY** button with no song selected. The iWAY will begin playing the first song in its music directory.
9. The buttons to the right of the Visualization Area control the Repeat and Shuffle options. Press **SHUFFLE** to toggle it on (the button should turn yellow). Now press **NEXT SONG**, and the iWAY will randomly choose a song out of those on the card.
10. Listen to your favorite music. Now you can return to your computer and add more songs or play lists to your iWAY.

11. To turn off the unit, press and hold **POWER** key for three seconds.

The Music Mode Display and On-Screen Commands

The Music Mode screen contains a large central area for visualization effects, with a set of play control buttons along the bottom of the screen. When a song or play list is playing, the name of the current song will appear at the top of the screen, as well as the song's length and its quality (in kbps).

To switch to Music Mode from Map Mode, select the **MUSIC** button on the Main Menu. The Music Mode display is designed to be simple. The following image shows the Music Mode screen, and the various play control buttons visible along the bottom of the screen. Using only these buttons and the toggle buttons on the right, you can listen to what you want, when you want.



Music Mode display, with all the on-screen command buttons shown.

All of the Music Mode commands are available right on-screen. The most important tools are the play control buttons at the bottom of the screen, but you can also touch anywhere in the Now Playing box at the top of the screen to choose a new song or play list.

Music Mode always runs using a "play list," even if this consists of a single song. You can copy pre-made play list files from your PC to your iWAY and play the songs in these play lists by selecting them from the song browser. It's just as easy to organize your music when you copy it to the iWAY, by arranging it into folders from your computer. That way you can simply play a folder at a time. When you select a folder to play, the iWAY automatically creates a play list out of all of the songs contained in that folder.

Later in this section we'll explain how to play folders, how to copy music and play lists from your PC, and how to manage all of them on the iWAY.

Using the Play Control Buttons

All of the play control buttons are fairly straightforward, and are probably already familiar to you. The portion of the screen we're referring to as play control buttons looks like this:



The Music Mode Play Control Buttons.

Song Position indicates the playback position in the currently playing song. Whenever a song begins playing, the Song Position slider begins at the far left and moves right. You can quickly skip to a different point in the currently playing song by pressing and dragging the blue button on the Song Position slider to the right (to fast forward) or to the left (to rewind).

Previous Song skips to the beginning of the previous song in the current play list and starts it playing. Hold this button down to fast reverse the currently playing song.

Play will play the currently selected song or play list, starting at the beginning. If you haven't chosen a play list or song yet, pushing Play will automatically generate a play list from all the songs on your iWAY's music drive. When a song is playing, the Play button is replaced by a Pause button.

Pause will stop the song currently playing but save its position (and its position in the current play list). When you pause a song, the Pause button is replaced by a Play button.

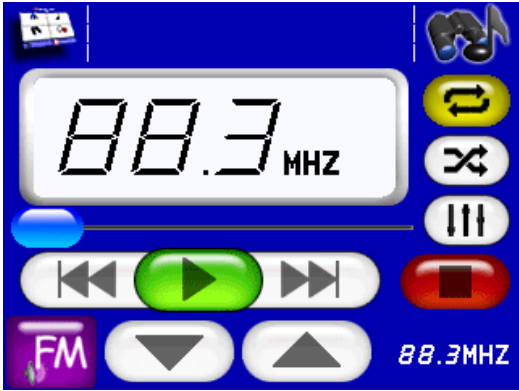
Next Song skips to the beginning of the next song in the current play list and starts it playing. Hold this button down to fast forward the currently playing song.

Stop cancels the current song playing.

Output Mode toggles the iWAY's audio output between speaker output and FM broadcast. When the iWAY is in speaker output mode, it will play audio output through the built-in speaker in the back of the case, or through headphones if they are connected. In FM broadcast mode, the iWAY will

broadcast its audio to a nearby FM radio at the selected frequency.

To hear MP3 music and audible driving directions through your car's FM radio, first tune the radio to a vacant FM frequency. In other words, one not used by a commercial radio station in your area. Next, tune the iWAY to the same frequency as the radio. Press the **OUTPUT MODE** button, then use the up and down arrows to select the frequency. You can choose any odd numbered frequency between 88.0 and 110.0 MHz.



Music Mode Display set to FM broadcast mode. Press the up and down arrows to the right of the FM button to select the same frequency as your car's FM radio.

Volume Slider adjusts the playback volume. Press and drag the blue button to the left or right to get the desired volume. The far left is mute, the far right is maximum volume.

Using the Now Playing Box to Launch Music Browser

The center of the top row of the Music Mode screen is a Now Playing box that shows you the name, position, and quality of the song that is currently playing. You can touch the screen anywhere inside the Now Playing box to open the music browser, which lets you choose the song or play list to play next.

Visualization Effects – Waveform/Spectrum Analyzer

The Visualization Area takes up the center of the Music Mode display and provides either a Waveform Analyzer or Spectrum Analyzer effect in time with the music that's playing.

To switch between the available visualization effects, press the screen inside the Visualization Area.

Music Browser

The iWAY can play both MP3 and Ogg Vorbis music files. It can also

recognize m3u-style play list files. Touch the Now Playing area of the Music Mode screen to launch the Browse Music Files screen.

The music browser is a screen showing the file structure of your music drive, including all of the songs and play lists available as well as any subfolders. If you've sorted your music by album or artist, you can select the folder you wish and play only the songs in that folder, or you can choose a particular song to play right away.



Use the Browse Music Files screen to choose which songs to play next.

From the music browser you can choose individual songs, play list files, or subfolders to play. Choose **PLAY ALL** to play all of the music files in the selected folder and its subfolders.

Find Music

The **FIND MUSIC** button in the top right corner of the screen launches an Audio Search menu. To find a particular audio file by its filename, press **FIND MUSIC** and then touch anywhere inside the Name Filter box to open the iWAY's Virtual Keyboard. Enter all or part of a song's filename and press **DONE**.

The Audio Search menu will provide a list of all of the audio files on your MMC card that match the text in the Name Filter field. Choose the one you want from the list and choose **PLAY** to begin playing it or **BROWSE** to open the music browser at the file's location.

Shuffle (On/Off)

When Shuffle is turned on, at the end of a song iWAY will randomly choose another song from the current play list to play next. When Shuffle is turned off, it will proceed to the next song in the play list (or, if you're playing all the songs in a folder, it will proceed to the next song alphabetically by filename).

Press the **SHUFFLE** button to toggle whether the option is on or off. The

button is yellow when the option is turned on, and white when the option is turned off.

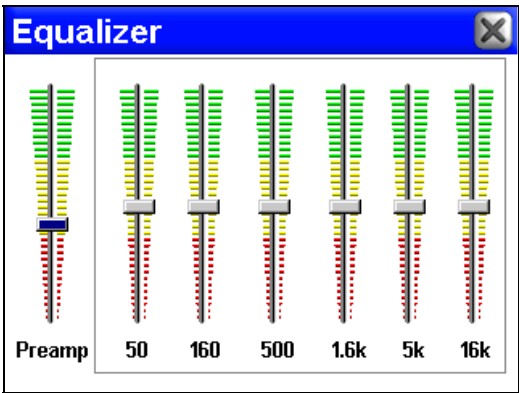
Repeat (On/Off)

When Repeat is turned on, at the end of a play list (or song, if you're only playing one song) iWAY will immediately start playing the play list again, from the beginning. When Repeat is turned off, it will simply stop playing music and wait for you to select a new song or play list.

Press the **REPEAT** button to toggle whether the option is on or off. The button is yellow when the option is turned on, and white when the option is turned off.

Setup Equalizer

Use the **SETUP EQ** button to customize the audio levels of your iWAY playback. To adjust levels, press and drag the slider for the control you want to adjust, moving it up to increase the level and down to decrease it.



Use the Equalizer to precisely control iWAY's audio playback.

Significantly increasing any of the Equalizer levels may cause audio distortion. If you're having problems with audio distortion, decreasing the **PREAMP** level will probably resolve them.

Section 4: Pictures, Gauge, and Options Menu

Pictures Slideshow

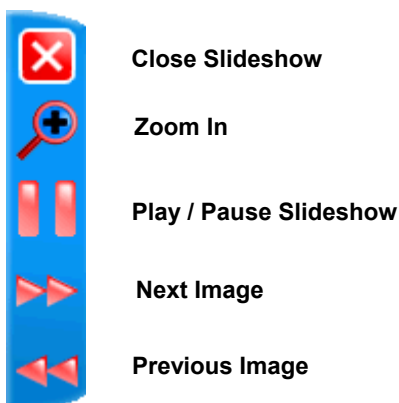
The iWAY can display photo images from your media card. To open the Photos Slideshow, choose **PHOTOS** from the Main Menu.

You can choose to play the images as a slideshow, or pause on a single image. A Pictures Toolbar allows you to control this display with buttons similar to the Music Mode play controls.



Pictures slideshow mode, looking for images, and with an image shown.

In order to use the Pictures Slideshow, you must already have photo images on the MMC or SD Card installed in the iWAY. The iWAY will automatically search the card for any usable images. To operate the Slideshow:



The Pictures Slideshow Toolbar.

Close Slideshow returns the iWAY to the Main Menu.

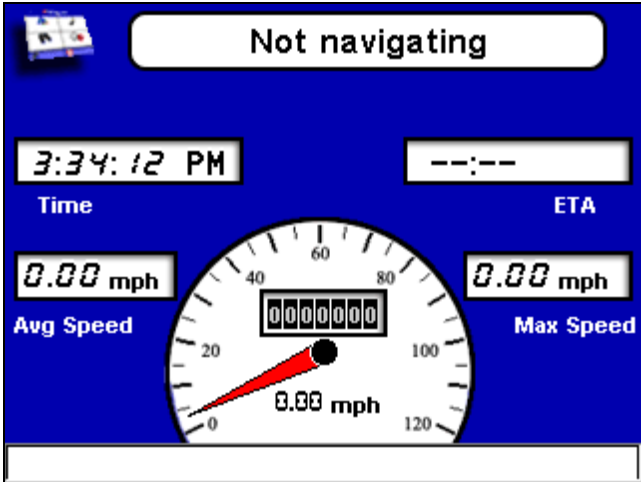
Zoom In enlarges the image currently displayed, zooming in on the center of the display. You can press and drag anywhere within the image display to focus on a particular area of the image.

Play / Pause Slideshow allows you to control whether the iWAY automatically cycles through the available images, or displays a single image constantly.

Next Image and **Previous Image** force the iWAY to skip forward or backward among the available images, so you can choose which one to display.

Gauge Page

The iWAY can display lots of helpful navigation information on a digital gauge. To view the Gauge Page, choose **GAUGE** from the Main Menu.

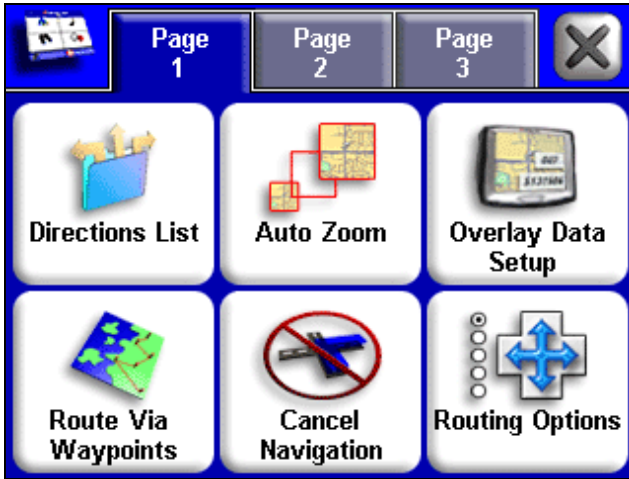


The iWAY Gauge Page shows useful information in an easy-to-read format.

This page shows several of the most useful Overlay Data items in an easy-to-read format. To leave the Gauge Page and return to the Main Menu, simply press the **MENU** button in the top left corner of the screen.

Options Menu – Page One

The iWAY has an Options Menu containing three pages of options and menus designed to let you customize the operation of your iWAY. To access the Options Menu from either operation mode, press **MENU** and then choose **OPTIONS**. Page 1 of the Options Menu will appear, as shown in the following image.



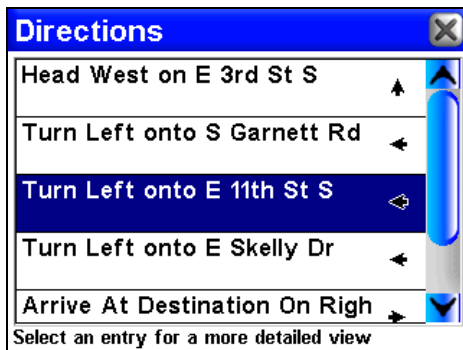
The iWAY Options Menu (Page 1).

In the following pages, we'll describe each of the Options Menu pages. All of these options come with default values so that you can use the iWAY right out of the box, so you may never need to make changes. You might want to skip on to Sec. 5, beginning on page 49, to learn more about searching for destinations and generating routes.

Remember as you read through this section that all menus and dialogs can be closed by selecting the "X" in the upper right corner of the screen.

Directions List

The Directions List is generated whenever iWAY begins navigating to a destination. It contains a list of all the turns from the start of your route to the end, including an arrowhead icon indicating the direction of each turn. It looks something like the screen in the following image.



The Directions List for a generated route.

You can look up and down the list by pressing and dragging the blue slider bar to the right. You can select any individual instruction on-screen for more detailed information. This screen is called a Turn Preview.

If Turn Preview is on, the Directions list will be displayed automatically when the GPS is lost. This could occur when driving through a tunnel or in a parking garage.

Auto Zoom (On/Off)

The iWAY has an Auto Zoom feature which attempts to show you the most map detail possible as you navigate along a route. While the moving map shifts to track your current position, the Auto Zoom will zoom the map in and out based on your speed and the distance to your next turn.

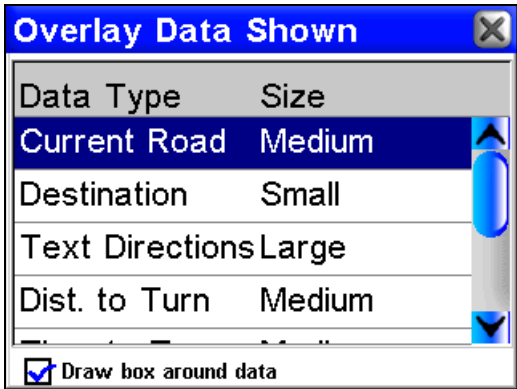
If it's turned on, the Auto Zoom takes control any time the map cursor isn't showing. When the map cursor *is* up, you can use Zoom In, Zoom Out and the Zoom Selection Box to control the zoom level. As soon as you Clear Cursor, though, Auto Zoom will automatically recalculate the zoom level.

If you would prefer to manually control the zoom level of your map display, you can toggle the Auto Zoom feature off by choosing **AUTO ZOOM** from the Options Menu. You can turn this feature back on in the same way.

Overlay Data Setup

Overlay Data are the text boxes that appear over your map display containing information such as the distance to your destination and the instructions for your next turn.

You can choose which information you want to appear as Overlay Data, as well as its location on the screen. To do this, from the Options Menu choose **OVERLAY DATA SETUP**. The first screen that appears is the Overlay Data Shown screen, showing your current setup. You can choose any item in the list to change its font size or location.



Use the Overlay Data Shown screen to modify Overlay Data.

You can also choose the last line in the list, "(Press here to add...)" to add another data box to your screen. The list of available overlay data appears, in an expandable tree structure.

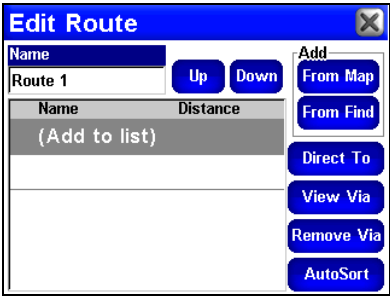
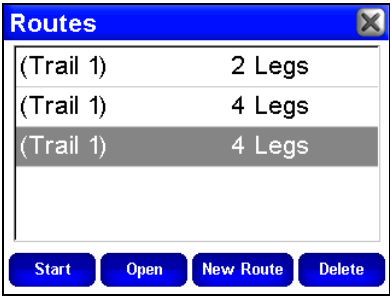
Choose the + next to any of the categories to expand it, and show the available data within the category. You can press the - next to any expanded category to hide its contents, to clear up the screen.

From this list, choose any of the data options to add it to your Overlay Data shown. You can then modify it on the Overlay Data Shown screen just like any of the others.

A checkbox at the bottom of the screen allows you to determine whether the iWAY should draw boxes around the information presented, or simply overlay the text on the map.

Route Via Waypoints

Although the iWAY is designed to generate your route from your start location all the way to your destination, sometimes you'll want a little bit of control over the path it makes. The Route Via Waypoints menu allows you to add intermediate locations along your route. When you use this command, the iWAY will make sure to send you to each location in the list, in order, before it sends you to the final destination.



Use the Routes menu to control your route. Image at left shows Trails, image at right shows all of the routing controls and options available when navigating.

Here's an example. Imagine you want to visit the nearest gas station before heading out of town on a road trip. First, make sure the first waypoint in the list is a nearby gas station (we'll describe how to search for one in Sec. 5), and the second item is your final destination.

NOTE:

The easiest way to set up a route with a multiple waypoints is to perform a search for one location in your route and choose **Go To** to begin navigating to it, then search for another location and choose

Go To for that one. The iWAY will provide you with an option of de-touring to that waypoint (adding it to the beginning of the route) or setting it as a new final destination (adding it to the end of the route). We'll discuss these options in more detail in Sec. 5.

Choose **START** and the iWAY will begin giving directions to the gas station. Once you arrive at the gas station, the iWAY will switch to the next waypoint in the list, and start giving directions to your final destination.

You can add as many as 99 items to the list; just remember that the iWAY will send you through this list in order. To expand on our earlier example, let's say you need to pick up a friend who's traveling with you. Put in the friend's house as the first stop on the trip, then stop by a nearby gas station, then add all of the places you want to go on your road trip (maybe Albuquerque, Las Vegas, Denver), in the order you want to visit them. Once you've got all your major stops entered, in order, have the iWAY start navigating. It will give you directions to your friend's house, so go pick him up, and then head for the road. The iWAY will guide you every step of the way.

AutoSort

If you want to rearrange the order of the waypoints in the list, you can use the **UP** and **DOWN** buttons on the screen to move the selected waypoint higher or lower in the list.

You can also have the iWAY generate a route for you among several locations, even if you *don't* know which order you want to go in. Simply enter all of the destinations in any order, then choose **AUTOSORT**.

The iWAY will try to reorganize the list of locations to make the shortest possible route among all of them. This can be useful if you're on a business trip and need to visit several clients at different locations. Put in all their addresses, choose **AUTOSORT**, and then let the iWAY pick the shortest path that will get you everywhere you need to go.

Cancel Navigation

When the iWAY notices that you've reached your destination, it will display a pop-up window asking if you want to cancel navigation to your destination. Choose **YES** to stop receiving navigation instructions to that location.

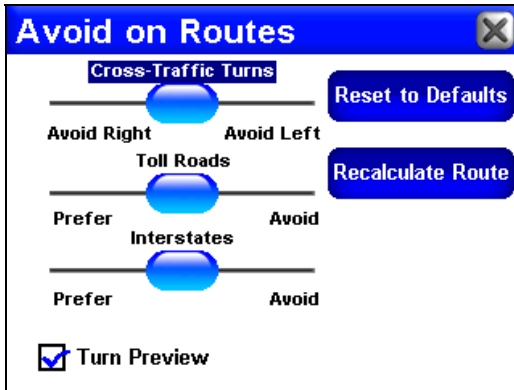
You can also cancel navigation to a destination at any time using the Cancel Navigation command. From the Options Menu, choose **CANCEL NAVIGATION**. Again the iWAY will display a pop-up window to confirm your choice. Choose **YES** and the iWAY will stop generating navigation instructions to the current destination.

NOTE:

If you're navigating a route with multiple via waypoints, when you choose Cancel Navigation the iWAY will ask you whether you want to cancel navigation of the entire route, or just cancel navigation to the current waypoint and continue on to the next waypoint in the route.

Routing Options

Routing Options are used to control exactly how the iWAY generates a route from your current position to a selected destination. To access these options, from the Options Menu choose **ROUTING OPTIONS**. A screen like the one in the following image will appear.



Use the **Avoid on Routes** menu to control how iWAY generates routes.

When generating a route, the iWAY is able to analyze certain types of roads or turns and adjust their value to either prefer or avoid them. Preferred road types will occur more often in your routes – the iWAY will deliberately try to take those types of roads. Road or turn types that you Avoid will show up less, although the iWAY may have to generate a longer route to avoid them.

The three slider controls on this page let you control how *much* you want to avoid or prefer the associated options when generating a route. The farther you move the slider to the left or right, the more it will affect the routes generated by iWAY. If you change these values significantly and notice that your iWAY has begun generating poor routes, try using the **RESET TO DEFAULTS** button to see if that fixes the problem.

You can use the **RECALCULATE ROUTE** button to automatically generate a new route to the same destination using the new preferences. Take advantage of this option when you're trying to learn the right *amount* of avoidance, to make sure the iWAY gives you just what you want.

Avoid Cross-Traffic Turns

Use this option to avoid turns across busy lanes of traffic. The iWAY will *not* avoid cross-traffic turns at major intersections, where you will likely have a protected turn at a traffic light. As with all of these settings, try changing it a little at a time. Sometimes you'd have to drive *miles* out of your way to avoid taking a cross-traffic turn somewhere in your route. Then again, sometimes it's worth it. Practice with this setting to find the value that's right for your driving experience.

Prefer/Avoid Toll Roads

By default, toll roads have a fairly high value in iWAY's route generation, because they are generally high quality roads with high speed limits, allowing you to get where you're going faster.

Of course, the convenience of toll roads comes at a price. If you'd rather save some of the cost of traveling toll roads, consider setting the iWAY to generally Avoid toll roads (press and drag the **TOLL ROADS** slider to the right). If you want to drive free, drag the slider all the way to the right, and the iWAY won't use toll roads at all.

Of course, if you prefer the convenience of toll roads (and don't mind the cost), you can give them an even greater value by pressing and dragging the slider to the left.

Prefer/Avoid Interstates

Of course, Interstate Highways aren't as expensive to travel as toll roads, but sometimes the stress of merging and exiting combined with the high speed make interstates less attractive – especially for short trips across town.

The default is already designed to avoid Interstates for very short trips, but if you feel like it's sending you to the highway too often, try telling the iWAY to Avoid Interstates (press and drag the **INTERSTATES** slider to the right).

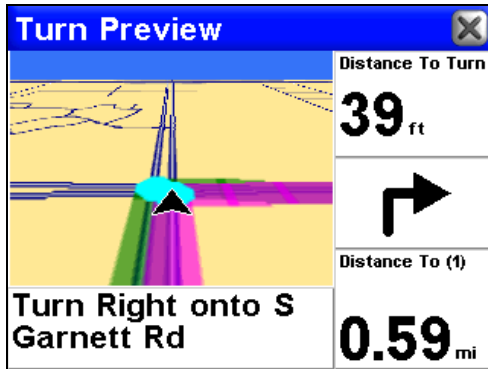
Like toll roads, you might prefer the speed of Interstate travel. You can tell iWAY to prefer Interstates by pressing and dragging the slider to the left.

Turn Preview

The Turn Preview checkbox on this screen allows you to toggle whether or not the iWAY displays a Turn Preview screen whenever you approach a turn in your route, as described earlier.

A Turn Preview is a special screen designed to prepare you for upcoming turns. You can access the Turn Preview for any turn in your route

by visiting the Directions List as described earlier.



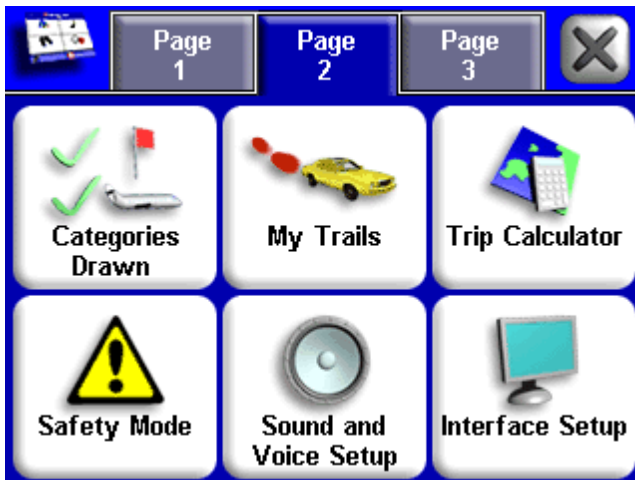
A sample Turn Preview screen.

As you can see in the previous image, the Turn Preview screen includes a close-up map of the turn itself, and you can see the magenta route line showing your path. Additional data boxes show the text instruction, the distance from your current location to the selected turn, the direction of the turn (in this case, straight ahead), and the total distance from the turn to the end of the route.

If you want the iWAY to automatically show you Turn Previews whenever you're navigating, make sure **TURN PREVIEW** is checked. You can turn this feature off by unchecking the box.

Options Menu – Page Two

Page 2 of the Options Menu contains the following options:



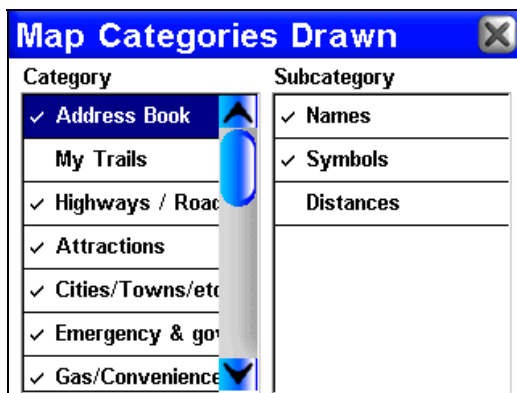
The iWAY Options Menu (Page 2).

Categories Drawn

The Categories Drawn command lets you choose how much of the mapping detail available in our database you want shown on the screen. This information includes contacts, Points of Interest, cities, highways, etc.

If you draw too much detail, your screen can feel cluttered. If you don't draw enough, you're not getting the most value out of your mapping GPS. You can use the Categories Drawn command to selectively turn on or off any of these items, customizing the map to your needs.

From the Options Menu, choose **CATEGORIES DRAWN** and a screen like the one in the following image will appear.



Use the Map Categories Drawn screen to customize your map. In this

example, the category My Trails and subcategory Distances are off.

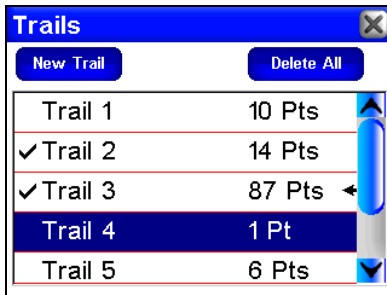
The Map Categories Drawn Menu is divided into two columns, "Category" and "Subcategory." You can turn any Category or Subcategory on or off. If you turn off a Category, none of its Subcategories will appear.

To turn an item on or off, press its entry in the list to highlight it. When it's highlighted, press it again to check it (turn it on) or uncheck it (turn it off). The Category list is longer than will fit on one page, so a scrollbar appears to the right of it. Press and drag the scrollbar's slider to move up or down the list.

My Trails

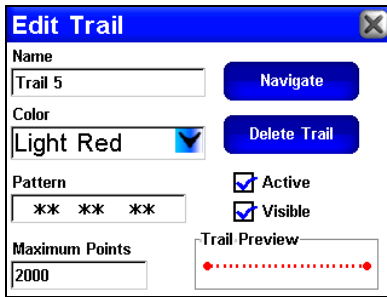
Most GPS units are designed to record plot trails, which are a record of where you've been. By default, Trails are hidden in your iWAY to save on screen clutter. You can choose to display Trails, which will show your travel history on the Map Mode display. For instructions on displaying Trails, see the earlier discussion of Categories Drawn.

The My Trails command lets you control *how* the iWAY records and displays Trails. To view the Trails Menu, choose **MY TRAILS** from the Options Menu. The Trails Menu lists all of the Trails currently stored on the iWAY, with icons to indicate which one is active (that is, which one is currently recording your travel), and which ones should be displayed.



Trails Menu, showing 5 trails. Trail 3 is the active trail (indicated by the arrow on the right). Trails 1, 4 and 5 are hidden (there is no check mark next to them), but Trails 2 and 3 are shown.

From the Trails Menu you can start a new Trail, or edit or delete an existing to Trail. To modify an existing Trail, press its entry in the list. The Edit Trail screen will appear.



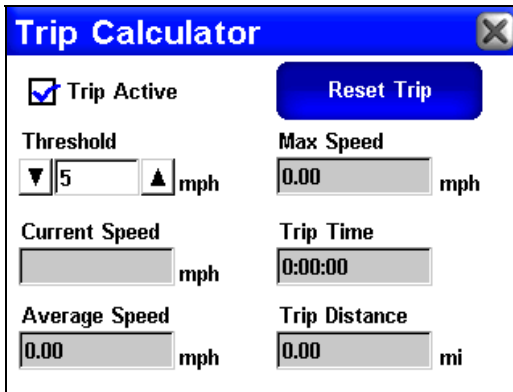
The Edit Trail screen allows you to modify an existing Trail.

On the Edit Trail screen, you can choose to Navigate the selected Trail (converting it into a Route), delete it, rename it, or modify its display characteristics such as color, pattern, and visibility.

Trip Calculator

The Trip Calculator is a handy tool for keeping track of detailed information concerning your route. You can use it to find the distance of your daily commute, or to calculate your average speed on a cross-country road trip.

To access the Trip Calculator, from the Options Menu choose **TRIP CALCULATOR**. A screen like the one in the following image appears.



The iWAY Trip Calculator screen.

Trip Active

Use the Trip Active checkbox to turn on and off trip calculation. If you want to take a detour without recording that in your trip calculation, you can simply use the Trip Active command to disable calculation.

Tap the checkbox to the left of the label **TRIP ACTIVE** to check it (turn on)

and uncheck it (turn off).

Reset Trip

The Reset Trip command is used to reset all of the calculated values to zero and begin recording new information.

Whenever you're starting a new trip, remember to open up the Trip Calculator Menu and choose **RESET TRIP**.

Threshold

You can use Threshold to make sure the information recorded by iWAY in the Trip Calculator only applies to your trip's route – not the lost time in snack stops along the way or the idle time spent in a traffic jam. If you're interested in complete details for *this* trip, set your threshold low (0 mph will monitor conditions all the time).

If you'd prefer a more accurate average measure, raise the Threshold above idle speed. The Trip Calculator will only track time spent and distance traveled while you're moving faster than the Threshold.

You can adjust this value by pushing on the up and down arrows to either side of the **THRESHOLD** box.

Calculated Data

The rest of the Trip Calculator screen shows you the calculated information for your current trip. These text boxes contain values that update in real time, while you watch, so you can see your exact speed or how far you've already gone.

Current Speed, Average Speed and Max Speed all track your ground speed as measured by changes in your GPS position.

Trip Time tells you how long you've been on the road, and **Trip Distance** tells you how long your trip has been so far. Remember that these values are only recorded while you're moving faster than the Threshold (as described earlier).

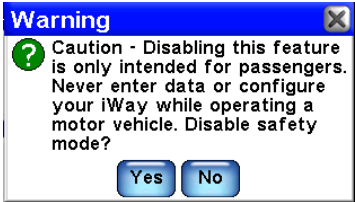
Safety Mode (On/Off)

The iWAY has a Safety Mode to prevent vehicle drivers from operating the GPS while the vehicle is in motion. The unit will navigate and play music while moving. The Power button will also work, but the touch-screen buttons are temporarily disabled whenever Safety Mode is on. The screen buttons become responsive when the vehicle stops.

However, if a passenger is available to act as navigator, Safety Mode can be turned off. This switches the unit to Passenger Mode and allows the passenger to operate the unit while the vehicle is moving.

To disable Safety Mode and switch to Passenger Mode, make sure the vehicle is not moving and, from the Options Menu, choose **SAFETY MODE** to toggle whether the option is on or off. The button itself will show its current state.

A dialog like the one in the following image appears. Choose **YES** to disable Safety Mode and return to the Options Menu.



Safety Mode disable menu.

WARNING:

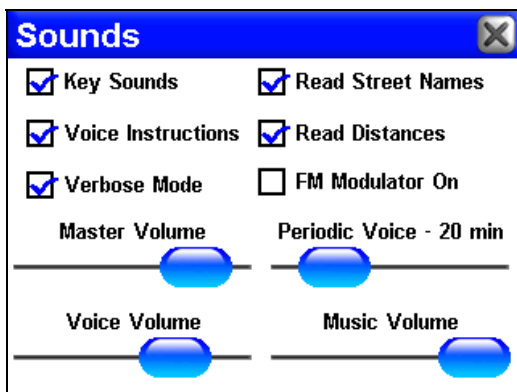
When a GPS unit is used in a vehicle, the vehicle operator is solely responsible for operating the vehicle in a safe manner. Vehicle operators must maintain full surveillance of all pertinent driving conditions at all times. An accident or collision resulting in damage to property, personal injury or death could occur if the operator of a GPS-equipped vehicle fails to pay full attention to travel conditions and vehicle operation while the vehicle is in motion.

Do not attempt to configure, adjust or enter information into your GPS unit while driving.

Sound and Voice Setup

Much of the information you'll receive from the iWAY will come in the form of sounds. Use the Sound and Voice Setup command to adjust the type and frequency of audio output iWAY provides.

From the Options Menu, choose **SOUND AND VOICE SETUP**. The Sounds Menu appears, as shown in the following image.



The iWAY Sounds Menu, used to adjust iWAY's audio output.

To turn Key Press Sounds on and off: Tap the checkbox to the left of the label **KEY SOUNDS** to check it (turn on) and uncheck it (turn off).

To turn Voice Instructions on and off: Tap the checkbox to the left of the label **VOICE INSTRUCTIONS** to check it (turn on) and uncheck it (turn off). If you turn off Voice Instructions, they can still be accessed by pressing **SPEAK**, which will make iWAY state the current instruction.

To adjust Periodic Voice instruction frequency: Press and drag the blue button on the **PERIODIC VOICE** slider. Drag it to the right to increase the frequency of spoken instructions, or to the left to decrease it.

Periodic Voice instructions are repeated at set intervals and are intended as reminders. Use this slider to adjust the frequency of Periodic Voice instructions until your iWAY is giving you exactly as much information as you need.

To set Voice Volume: Press and drag the blue button on the **VOICE VOLUME** slider. Drag it to the right to increase the output volume, or to the left to decrease it. Note that this setting only affects spoken instructions; your music volume will remain unchanged.

To set Music Volume: Press and drag the blue button on the **MUSIC VOLUME** slider. Drag it to the right to increase the output volume, or to the left to decrease it. Note that this setting only affects music playback; spoken instructions will remain unchanged.

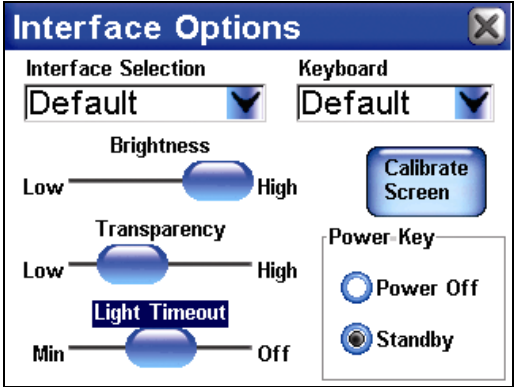
To set Master Volume: Press and drag the blue button on the **MASTER VOLUME** slider. Drag it to the right to increase the output volume, or to the left to decrease it. This setting affects all audio output from the iWAY.

Interface Setup

The Interface Options Menu allows you to control the visual display of

your iWAY, such as its brightness and contrast and the graphical skin. You can also use the Interface Options Menu to access the Calibrate Screen command, in case your iWAY's touch screen isn't responding precisely.

To access the Interface Options Menu, from the Options Menu choose **INTERFACE SETUP**. The menu will appear, as shown in the following image.



The Interface Options Menu.

Skin Selection

Skin Selection allows you to change the visual appearance of the entire iWAY interface. We provide several to choose from. To change your current skin display, touch anywhere inside the **SKIN SELECTION** box and a drop-down list will appear showing the names of all of the available Skins. Choose one from the list, and the iWAY will begin displaying the new skin automatically.

Screenshots throughout this manual were taken using the "Default" skin.

Keyboard

Keyboard allows you to choose the layout of the buttons on the iWAY's virtual keyboard. Use this option to choose the layout you're most familiar with, so you can enter text information quickly and easily.

Brightness

The Brightness Slider controls the graphical brightness of the screen. High levels of brightness could make the iWAY difficult to read, especially during night use; low levels may make the screen seem too dark for easy viewing. Use the slider bar to adjust your screen's brightness to your preference.

To increase your screen's brightness, press and drag the button on the slider bar to the right. To decrease it, press and drag the button to the left.

Transparency

The Transparency Slider controls the transparency of icons and other Overlays drawn over the background map, such as the Toolbar, and any navigation instruction boxes. Increasing transparency will make it easier to see the background map, but may interfere with the legibility of the Overlays. Decreasing transparency clarifies Overlays but it also obscures underlying map information.

To increase transparency, press and drag the button on the slider bar to the right. To decrease it, press and drag the button to the left.

Contrast

The Contrast Slider controls the graphical contrast between screen colors. Like brightness, contrast must be balanced to individual tastes and lighting conditions. Use the slider bar to adjust it to your preference.

To increase your screen's contrast, press and drag the button on the slider bar to the right. To decrease it, press and drag the button to the left.

Calibrate Screen

The Calibrate Screen command is used to correct any differences between the location you press on the touch screen and the location the iWAY *thinks* you pressed. If you find that the iWAY isn't responding perfectly to your touch screen input, run the calibrate screen command.

From the Screen Setup Menu, choose **CALIBRATE SCREEN**. Another screen will appear on your iWAY, similar to the one in the following image, with a small target icon somewhere on the screen. A test message asks you to press the center of the target. When you do, a new target will appear elsewhere on the screen.



The Touch Screen Calibration menu.

Press each of the targets in turn. After the third, the screen should be calibrated. The calibration screen will disappear, returning you to the Screen Setup Menu. You may want to use a stylus for more accurate calibration (or even the plunger of a ballpoint pen) – if you do, take extra care not to scratch the touch screen.

Standby Mode vs. Power Off Mode

The power button turns the unit off and on in two different ways. When the unit is on, holding the power button down for about two seconds will put the unit in "standby mode." Standby Mode is your unit's default setting; it does not turn the unit completely off.

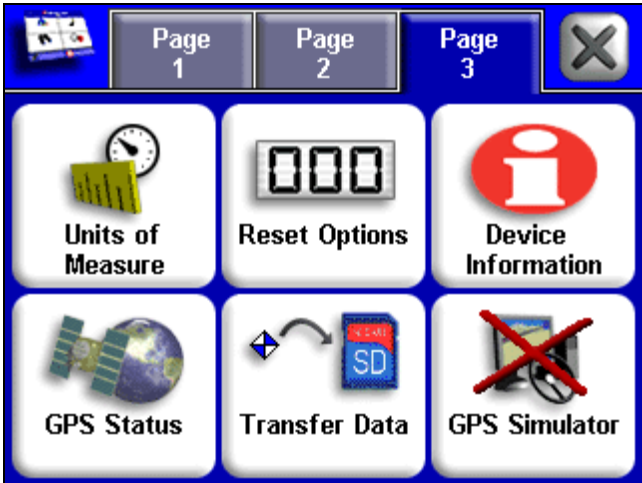
Standby Mode allows it to "sleep" and draw very little battery power. Because the unit is not completely shut off, the next time you turn it on it will start up faster than if the unit was fully shut down.

If the unit is left idle for 24 hours, it will automatically leave the Standby "sleep" state and switch to a full shut down to save battery power. However, the power button's Standby setting is unchanged; the next time you power down, it will again return to Standby Mode.

If you wish, you can disable Standby Mode, so that the unit will completely shut down when you turn it off. To disable it, select **POWER OFF**. In the Power Key box of the Interface Options Menu.

Options Menu – Page Three

Page 3 of the Options Menu contains the following options:

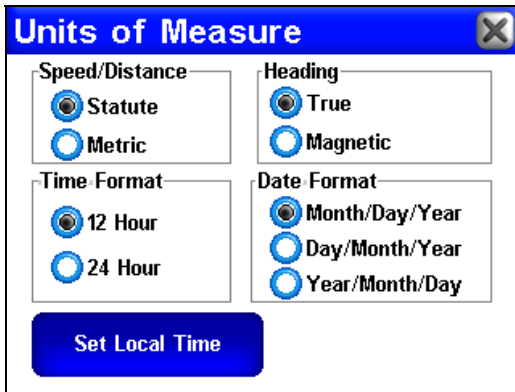


The iWAY Options Menu (Page 3).

Units of Measure

This menu adjusts the units of measure iWAY uses to display speed and distance (statute miles or meters), your heading (true or magnetic), the current time (12 hour or 24 hour format), and the date (Month/Day/Year, Day/Month/Year or Year/Month/Day).

To change any of these, from the Options Menu choose **UNITS OF MEASURE** and the menu shown in the following image will appear.



The iWAY Units of Measure Menu.

To change any setting: simply tap the button next to the format you prefer. The button you select should become selected, and the previous format should become unselected.

Reset Options

To reset all customizable settings to their factory defaults, from the Options Menu choose **RESET OPTIONS**. A dialog will pop up asking you if you're *sure*. Choose **YES** to proceed.



Reset Options confirmation dialog.

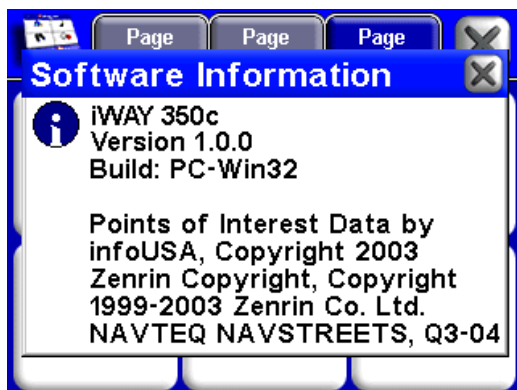
NOTE:

Reset Options does *not* erase any of your contacts, or saved routes or trails.

Device Information

From time to time, Lowrance updates the operating system software in some of its products. These software upgrades are usually offered to customers as free downloads from our web site, www.lowrance.com. These upgrades make the unit perform better or introduce a new feature or function. You can find out what software version is running in your unit by using the Device Information command.

From the Options Menu, choose **DEVICE INFORMATION**. A dialog like the one in the following image will pop up, showing you all the current information about your iWAY.

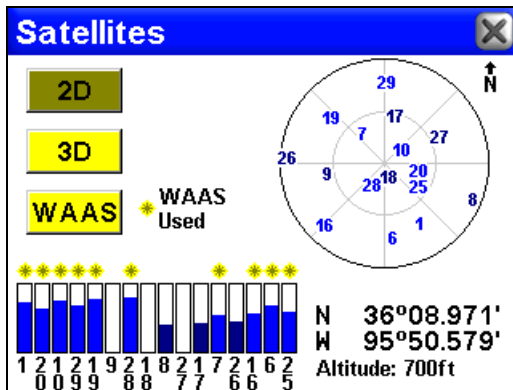


The Device Information screen shows the details of your iWAY's software.

Complete information and instructions for installing an update will be available on the update's page at the Lowrance web site.

GPS Status

The GPS Status command opens a GPS Status Screen, which provides information on the satellite signals that your iWAY is monitoring to determine your position. You can access the GPS Status Screen by choosing **GPS STATUS** from the Options Menu. A screen like the one in the following image will appear.



The iWAY GPS Status Screen.

The GPS Status Screen contains several graphical elements that represent a lot of information.

Current Position Lock

A set of three buttons along the left side of the screen indicates the quality of position lock your iWAY currently has. The button that's selected indicates your current position lock. If none of them is selected, your current position hasn't been established.

2D means the iWAY has achieved a lock on your current position on a map. A 2D lock does *not* include your altitude. The iWAY must receive reliable signals from 3 satellites to establish a 2D lock.

3D means the iWAY has achieved a more reliable lock, including not only your coordinate location but also your altitude (or elevation). The iWAY must receive reliable signals from 4 satellites to establish a 3D lock.

WAAS means your GPS is receiving reliable correction signals from the FAA's Wide Area Augmentation System. WAAS is designed for use in aircraft, but occasionally terrestrial vehicles can attain a WAAS lock. This is the most accurate position signal available in the iWAY.

EPE (Estimated Position Error)

The Estimated Position Error (abbreviated "EPE") is shown right next to the Current Position Lock buttons. This value represents the expected error from a benchmark location. In other words, if the EPE shows 50 feet, then the position shown by the unit is estimated to be within 50 feet of the actual location.

This also gives you an indicator of the fix quality the unit currently has. The smaller the position error number, the better (and more accurate) the fix is. If the position error flashes dashes, then the unit hasn't

locked onto the satellites, and the number shown isn't valid.

Satellite Display

A white circle that serves as a graphical view of the satellites overhead fills much of the right half of the screen. Each satellite is shown on the circular chart relative to your position. The GPS receiver is tracking satellites that are in blue type. The receiver hasn't locked onto a satellite if the number is in dark blue, so it isn't being used to solve the position.

Lat/Lon Coordinates

Beneath the Satellite Display, you can see your Coordinates in Latitude and Longitude. These numbers can be used to pinpoint your location on any map, or to create contacts at your position on another GPS.

Transfer Data

In addition to storing media files such as music and pictures, you can use your MMC or SD Card to store and transfer GPS data recorded on the unit. This is a handy way to save contacts that you've created, Trails of places you've been, and routes you've set up.

To save data to your memory card, or to load data *from* your memory card, choose the **TRANSFER DATA** command from the Options Menu. Tell the iWAY whether you want to **LOAD** data for the iWAY to display and use, or **SAVE** data to the card, to store or transfer it to another GPS unit.

If you choose to Load data, then you should choose the dropdown box and make sure to choose the filename of the GPS Data File you want to load. If you're Saving data, you can select the Filename text box to enter a new name describing the data you're saving.

GPS Simulator

The iWAY offers a GPS Simulator option that allows it to simulate the navigations of a route. When you turn on the Simulator, the iWAY pretends it has a GPS lock at the current location, then begins moving along the current route as though you are following it.

This feature can be handy when the iWAY recommends a route you've never traveled before, letting you preview the whole way from your start to your destination. Four play control buttons in the bottom left of the screen allow you to control the simulator.

Use the **REVERSE** button to move backwards along the route. Stop or resume motion along the route using the **PLAY / PAUSE** button, or speed up simulation by pressing **FORWARD**. To stop following the current route and return to your starting location, press Stop.

The iWAY will remain in Simulator Mode until you turn it off in the Options Menu. To turn off Simulator Mode, choose GPS Simulator from the Options Menu.

NOTE:

If you are running the Simulator while driving about 15 miles per hour or faster, and the unit acquires a satellite lock, the unit will ask if you want to leave simulator mode. Select **Yes** to begin navigating or select **No** to continue running the Simulator.

Section 5:

Searching, Finding, and Navigating

One of the most important uses of the iWAY is generating routes to help you get from where you *are*, to where you want to be. In this section, we'll teach you how to make iWAY generate a route for you, as well as how to use the information iWAY provides.

With the exception of the simple **Go To** command on the Location Information screen, the iWAY's search functions all begin with pressing the **FIND** button on the Map Mode Menu. When you do so, the Find menu appears, as shown in the following image.



The iWAY Find Menu (Find 1 page).

NOTE:

You can search for items even before the unit has acquired a position. If you do a search before your position has been determined, iWAY will show you distance and bearing to the selected item from the unit's last known position. It will also offer to simulate the route. For details on simulating a route, see Sec. 4.

The Find Menu, like the Options Menu, is divided into three pages. When you first open the Find Menu, you will always see page 1, which has buttons for each of the most common searches. To access the other pages, choose the appropriate button at the top of the screen.

The options on the top row of page 1 all point to a database of POIs (Points of Interest) stored on your unit. We've divided Gas and ATMs, Lodging and Restaurants into their own categories to save you time on the most common searches. These category buttons can be convenient,

but when in doubt you can choose to **SEARCH ALL POIS BY NAME** from page 2 of the Find Menu. The iWAY has very powerful search tools to help you refine your search, and pick precisely the location you want out of all the iWAY's stored locations.

NOTE:

Any time you perform a search while the map cursor is up, by default the distances listed for search results will be calculated from the cursor position, not your current position. That means you can scroll ahead to a destination a hundred miles away, and find the nearest hotel *there*, or you could clear the cursor and do a search for the hotel nearest your *current* location, then finish the trip tomorrow.

FIND ADDRESS lets you enter a street address and navigate directly to it. **ADDRESS BOOK** lets you search through a list of contacts that you've created, and navigate back to them.

RECENT DESTINATIONS is a helpful function that keeps track of the most recent places you have navigated to, so you can go right back.

Finally, as we mentioned in Sec. 2, the Location Information screen's **Go To** command allows you to generate a route to any point on the map, simply by placing the map cursor at your desired destination.

We'll discuss all of these search options in the following pages, but first we need to describe one of the iWAY's basic tools, which will be used a lot in searching: the virtual keyboard.

Using the iWAY's Virtual Keyboard

Many of the search options available through the Find menu will require you to enter data such as shop names or address numbers. To do this, you will use the touch screen to select letters, numbers and symbols on iWAY's virtual keyboard.

Whenever you are asked to enter keyboard information, the keyboard will appear. It generally looks like one of the following images. Note the button in the bottom right corner that says **NUM/SYM**. You can use this button to toggle between the Letters key set and the Numbers and Symbols key set.



The iWAY virtual keyboard is shown left using the Letters key set, and shown right using the Numbers and Symbols key set.

The other important button to notice is the one on the top right, **DONE**. Push **DONE** when the text field contains the information you want to enter. When you do this, the iWAY will sometimes provide you with a list of several options that closely resemble whatever information you entered. Choose the one you want by pressing its line in the list.

Now that you know how to enter the information the iWAY will need, let's look at some of the ways you can *use* this information. We'll simply work our way across the Find Menu screen, starting on the left.

Find Gas and ATMs, Lodging, and Restaurants

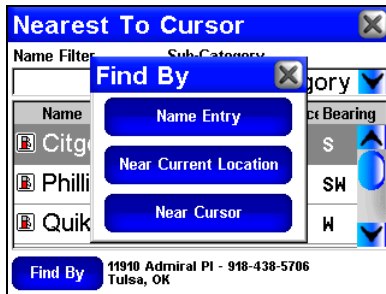
All of the options on the top row of page 1 work essentially the same. We'll use the **GAS, ATMs** command as an example, but you can follow essentially the same steps to locate and plot a course to any Point of Interest stored in our database.

To find a nearby gas station:

1. From the Menu, press **FIND** to open the Find Menu.
2. Choose **GAS, ATMs**. A "Calculating" screen will appear briefly, and then the iWAY will show you a list of the nearest gas stations in its database. Wait a moment for it to finish filling up the list, and then you can choose the one you want.

NOTE:

The iWAY has several methods of performing searches. If you have the map cursor showing, it searches for all relevant locations near to the map cursor. If you're not navigating and don't have the cursor showing, it searches for locations near your current position. You can change these search settings by choosing the Find By button in the bottom left corner of the search screen.



The Find By menu allows you to customize searches.

The Find By menu allows you to force the iWAY to search by any of the methods described earlier, or by Name. Searching by Name allows you to find the closest Mobil, or the closest Texaco, if you have a preference. It's often used in Restaurant searching.

For our example, though, we'll assume we're running low on gas and need the first gas station available, so we'll just use the iWAY's default Find By setting, **NEAREST**.

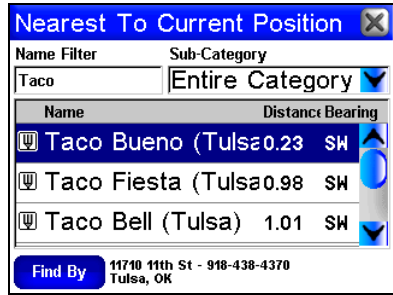
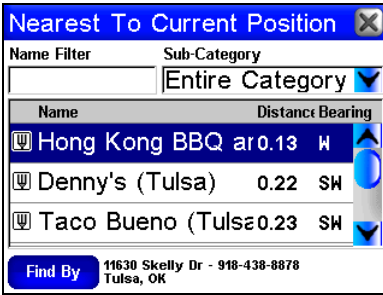
The list of search results contains two entry fields at the top, and three columns across the bottom of the screen. The first column contains the location's name, and fills most of the screen. The contents of the second and third column depend whether or not you're *currently* navigating to a destination. If you're not navigating, you will see the distance and bearing from your current location (or cursor position) to the listed location. If you're already on a route, though, the iWAY will use these two columns to show the To Exit and From Exit distances to help you manage your trip.

Using the Name Filter

Sometimes a search returns far too many results to include the one you want, or maybe just more results than you feel like scrolling through. The Name Filter on the search results list helps you narrow down the list to just those items containing a particular set of letters.

To use the Name Filter, press anywhere inside the **NAME FILTER** field, and the virtual keyboard will appear. Type all or part of the name you are looking for, and press **DONE**. The iWAY will return to the previous list, but it will only show those locations whose names contain the text you entered in the Name Filter field.

For instance, a search for the nearest Restaurants may provide too long a list to be useful. You could significantly narrow the search by entering the word "Taco" in the Name Filter field. This shows all the nearest Taco Bells, Taco Buenos, and any other restaurant nearby with "Taco" anywhere in the name, as shown in the following images.



At left, a list of nearest restaurants to your current position can be displayed. To search for a specific restaurant by name, select the Name Filter option; "Taco" search results are shown at right.

Navigating to the Selected POI

Now that you have a list of nearest POIs (and know how to read it), choose the one that suits you best, and touch its line on the screen. The iWAY will then show you a Location Information Screen with details about the POI you've chosen.

Since this is the result of a POI search, the Location Information Screen will likely have the name of the POI, its street address, and probably even its phone number. (That can be very helpful for calling ahead to get a table at a restaurant.) Much more important to you are the Go To and Find On Map commands.

You can choose Find On Map to make the iWAY close the Location Information Screen and move the map so that it's centered on the selected POI. This can be helpful if you're trying to figure out where it is in relation to your own position, or to some other part of town.

Right now, we're just trying to get *to* the gas station, though, so choose **Go To**. The iWAY will generate a route from your current position (or last known position, if it doesn't have a satellite lock) to the selected destination.

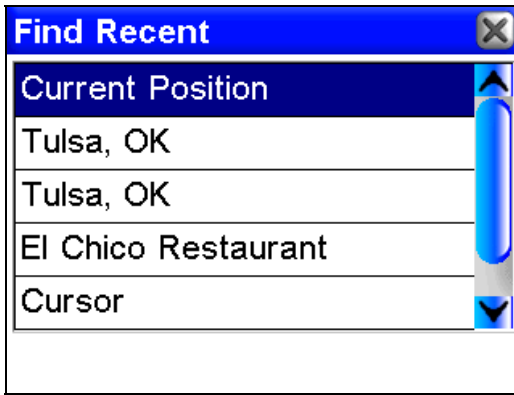
NOTE:

There are several optional settings that control exactly *how* the iWAY generates its route. These options are discussed in detail in Sec. 4. See the heading "Route Options" there for more details.

As soon as the route is generated the iWAY will draw the course of your route in magenta on the map, and begin providing visual and spoken directions along the route. You can skip ahead to the heading "Following iWAY's Instructions" if you're interested in exactly how the iWAY directs you along your course, or you can keep reading to see the other sorts of searches available on the Find Menu.

Recent Destinations

This handy command provides you with a list of the 20 most recent destinations you searched for. If the destination was a cursor location, the list will show its street address whenever possible.



The Find Recent screen.

You can use the Find Recent menu to quickly get back on your route if you diverted to a POI along the way, or to navigate back and forth between two locations on a common commute.

Find Address

Find Address will let you navigate to nearly any address, using only the street number and the street name. Of course, this is a very handy feature when trying to visit a friend or some other residential destination. It can also be quite helpful when trying to locate a shop or business that's not included in our POI database! Just look it up in the phone book and enter its street address to navigate right to it.

1. From the Menu, press **FIND** to open the Find Menu, then choose **ADDRESS**. The following image appears, with three fields. "Address" requires only the number, and "Street" requires only the street's name (not identifiers such as "Ave."). To enter information in either of the text fields, simply press anywhere inside the field.
2. **To enter an address number**, press inside the **ADDRESS** field and the virtual keyboard will appear. Enter the desired address number, and then choose **DONE**. The Find Address menu will appear again, with the information you entered in the Address field.
3. **To enter a street name**, press inside the **STREET** field and the virtual keyboard will appear. Enter the desired street name, and then choose **DONE**. The Find Address menu will appear again, with the information you entered in the Street field.

Find Address

Address # Enter the house number, then enter the street name with no modifiers. Eg. 1234 S Main St. would require you to enter Main for the street.

Street name only

None

State City/County Filter

Alabama ▼

Find Address Reset Help

Find By Name

Street Clear Done

A	B	C	D	E	F	G	H
I	J	K	L	M	N	O	P
Q	R	S	T	U	V	W	X
Y	Z	-	'	Space	←	Shift	Num Sym

Find Address menu, shown left with all fields empty, and shown right the Find By Name menu.

4. **To choose your state**, press the down arrow (↓) or anywhere inside the State field and a list will pop up with a scrollbar to the right. Press and drag on the blue box to scroll the list up or down, then choose the name of your state by touching its line in the list. You can also press the up or down arrows to move the selection one line at a time.

5. **To choose your city or county**, press inside the **CITY/COUNTY** field and the virtual keyboard will appear. Enter the desired street name, and then choose **DONE**. The Find Address menu will appear again, with the information you entered in the City/County field. When you choose **FIND ADDRESS**, the iWAY will only search within the city or county you've entered.

NOTE:

You can leave the City/County field blank for most address searches. We recommend you only enter information in this field if your address search provides too long of a list when you don't specify a city or county.

6. Choose **FIND ADDRESS**. A dialog will pop up letting you know it's working while the iWAY searches for the address, and then a list of possible choices will appear. Touch the line of the address you want to bring up its Location Information Screen.

Find Address

Address # Enter the house number, then enter the street name with no modifiers. Eg. 1234 S Main St. would require you to enter Main for the street.

1648

Working...

Finding street address. Please wait.

State City/County Filter

Oklahoma ▼

Find Address Reset Help

Addresses

- 1648 OK-125, E St Sw
Miami, OK 74354
- 1648 E St Nw
Miami, OK 74354
- 1648 OK-58, OK-8, E State Rd, E St
Fairview, OK 73737
- 1648 Sw E Ave
Lawton, OK 73501
- 1648 US-183, E St
Snyder, OK 73566
- 1648 W E Ave
Elk City, OK 73644

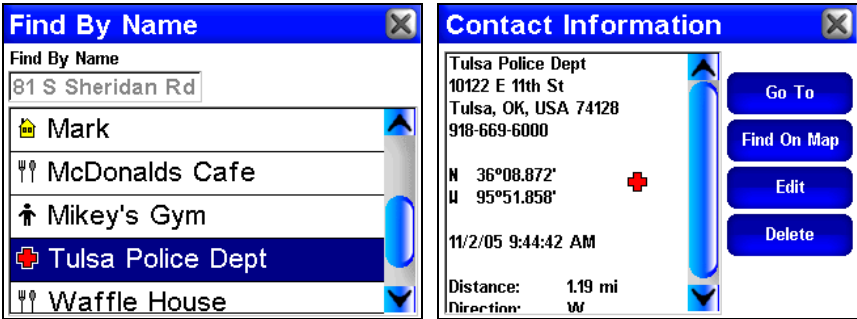
Find Address generates a list of possible matches. Choose the one you want.

Of course, you already know how to use the Location Information Screen. You can see how far away the address is, or choose Find On Map or Go To if you want to begin navigating to it.

Address Book

Address Book allows you to navigate to contacts you have created. To create a contact, use the Location Information screen and select **ADD TO ADDRESS BOOK**. We describe contact creation under the heading "Creating and Saving Contacts" in Sec. 2.

Once you have created an address, choose **ADDRESS BOOK** in the Find 1 menu. The Find By Name screen will appear allowing you to enter the contact's name or you can scroll through your address book using the slide tool. You can also use the Find By Name option to search your entire Address Book.



The Find by Name screen is shown at left. Once you have selected a specific name from your address book, the Contact Information screen, at right, will display the address and other information.

Choose the contact you're interested in by selecting it from the list. The Location Information Screen will appear, allowing you to **GO TO** the contact, **FIND ON MAP**, **EDIT** its name and display information, or **DELETE** it. Choose any of these buttons to continue.

Other Pages

If you're looking for POIs, pages 2 and 3 of the Find Menu offer not only the Search All POIs by Name button, but also buttons for several other subcategories. If you're searching for POIs in a particular category other than Gas and ATMs, Lodging or Restaurants, these can be handy menus for narrowing and simplifying your search.



Pages 2 and 3 of the Find Menu.

In addition to these subcategories, pages 2 and 3 provide a Find Intersections option, and an RV Parks/Services Menu.

Intersections

The Intersections command on the Find menu will let you navigate to any street intersection. This can be a very helpful tool when you're trying to follow directions but don't have a specific street address. You can also use the Intersections command to find a single street. To search for either an intersection or a street, from the Find Menu choose **FIND 3**, then **INTERSECTIONS**. The Find Streets menu appears.

On the Find Streets menu, enter a name for the First Street by touching anywhere inside the **FIRST STREET** field. The virtual keyboard will appear. Enter the name of the street (without direction or street type modifiers such as "N." for "North" or "Ave." for Avenue). When you're finished entering the street name, press **DONE**.

The iWAY will return to the Find Streets menu, with the entered name showing in the First Street field. (In this example, it's 80th Street.)

Find Streets ✕

First Street

Second Street

City

Find Intersection

Find First Street

You can use the Find Streets screen to find a single street by entering a name and choosing Find First Street.

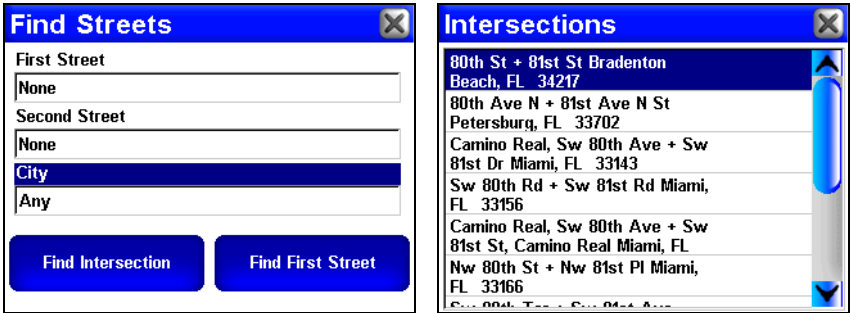
Find a Street

If you just want to find your way to a single street, choose **FIND FIRST STREET** and the iWAY will provide a list of streets of similar names. If the list is too long, try specifying a city by pressing inside the **CITY** field and entering a name on the virtual keyboard.

From the list, choose the name of the street you're looking for, and the iWAY will display it on the map.

Find an Intersection

To find an intersection, make sure you've entered a street name in the First Street field as described in the previous instructions. Repeat those steps to enter the name of a crossing street in the **SECOND STREET** field, then choose **FIND INTERSECTION** and the iWAY will provide a list of all known intersections of those two street names. Choose one from the list, and the iWAY will show a dialog asking whether you want to **Go To** the intersection, **FIND ON MAP**, or **ADD TO ADDRESS BOOK**.



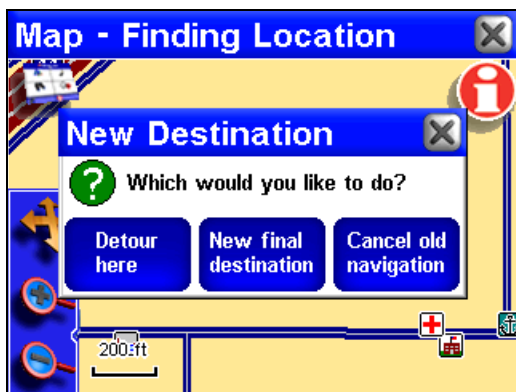
Find Streets menu shown left, with the list of found intersections right.

Choosing New Destinations while Navigating

So far we've taught you all the ways to make the iWAY generate a route for you from scratch. No matter which method you use, the iWAY responds in the same way. It begins examining the roads between your current position, and your selected destination.

If you're already navigating to a destination, though, the iWAY will behave a little differently. The iWAY needs to know whether you want to cancel your previous navigation, or put it on hold while you visit this new location. You can even schedule to visit the new location *after* you finish your current route.

If you choose to Go To a new destination while you're navigating, the following dialog will appear.



Choose how to add a new destination to a current route.

Detour Here will make the iWAY immediately navigate you to the selected location. Once you arrive there, the iWAY will resume navigating to your previous destination. This can be useful when you're traveling to a destination and want to stop for lunch along the way. Search for the nearest restaurant, detour to the restaurant, and then the iWAY will automatically switch back to your real destination.

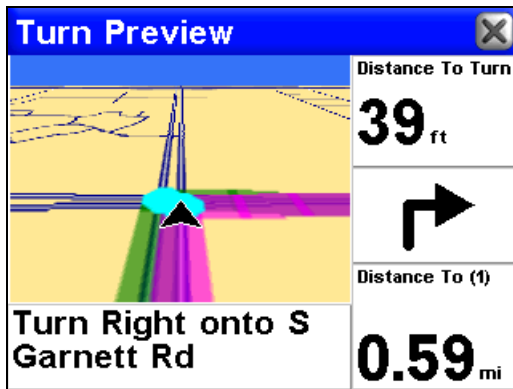
New Final Destination will add the new location to the *end* of your current route. So if you're currently navigating to a nearby restaurant and choose to set a gas station as your New Final Destination, the iWAY will direct you to the restaurant first, and send you on to the gas station after you've finished eating.

Cancel Current Navigation will stop navigating to your old destination, and start you navigating to the new location.

Following a Generated Route

By default, the iWAY tries to find you the fastest, shortest route to your destination. It will generate a list of instructions detailing the turns you need to make and the roads you need to follow along the way. It will also draw a magenta line on the map display, showing the route you're supposed to take.

Every turn in your route – every instruction you'll receive – is shown on the map as a green dot on the magenta route line. You can point the map cursor at any of these dots and a pop-up text box will show you the text instruction for that turn.



The iWAY clearly indicates every turn in a generated route.

Push the Location Information button while a turn dot is selected, and the Turn Preview Screen for that turn will immediately appear.

It's easy to teach the steps to make the iWAY generate a route. It's a little harder to describe exactly how you should use that information. Following the routes generated by the iWAY will take some practice. You have to learn when it's perfect, and when it's just good. And, of course, you have to learn what exactly it *means* by some of the terms it uses. In the following pages, we'll try to give you some pointers to lead you in that direction.

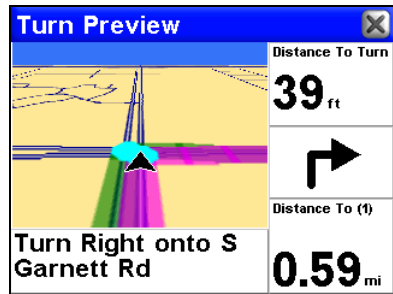
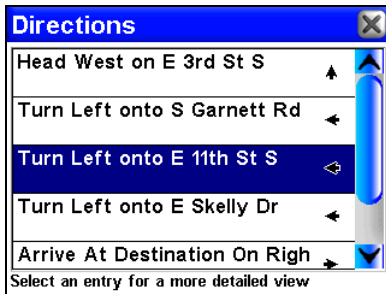
Knowing the Area

The iWAY is designed to help you find your way in unfamiliar streets. It *can* be extremely handy at home, too, but there is no substitute for local knowledge. If you use the iWAY in your own neighborhood, it may occasionally recommend a route that you know isn't the best option. Of course, we do our best to provide the optimum route in all situations, but if you know a better path than the one the iWAY provides, take it.

As soon as you leave the iWAY's recommended course, it will begin generating a new route based on your new position. This will likely match the path you planned to take.

Using Turn Preview and the Directions List

Turn Preview and the Directions List are both described in Sec. 2. The main navigation mode of the iWAY is the Map Mode with its Overlay Data and voice instructions. The goal of the Map Mode is to provide you a constant awareness of your current position on your route, and a general sense of the larger route. Turn Preview and the Directions List are designed to give you slightly different information from the basic Map Mode navigation.



The Directions List is shown left; a Turn Preview is shown right.

Turn Preview allows you to leave your current position to focus minutely on a particular turn in the path ahead. A close zoom range and large-font data boxes combine to help you see exactly the road conditions up ahead.

The Directions List, on the other hand, gives you a detailed description of the entire route – more information than you can see in the basic Map Mode. The Directions List tells you every step of the way, so you can get a very good idea what to expect further down the road.

The path described in the Directions List parallels the magenta route line on your Map Mode, and every entry in the list is shown on the map's route as a dot, as we mentioned. You can select any turn in the Directions List to open a Turn Preview screen for that instruction.

These tools can be very useful when checking a route through a known area. After the iWAY generates a route, open the Directions List and read through the steps to see if it generally matches the path you would take. If the route is over unknown ground, this can be a very useful way to prepare yourself for the path ahead.

Considering Temporary or Local Conditions

Of course, the iWAY cannot possibly be aware of all temporary or local conditions that could affect your course. Short-term construction, traffic jams, or local bans on U-turns could all impact the usefulness of an iWAY-generated route.

If you're following a route generated by the iWAY and temporary or local conditions make it impossible (or inconvenient) to follow the iWAY's instructions, use your best judgment. Keep driving, and do your best to keep moving toward your destination.

Whenever the iWAY notices that you have left the path it generated for

you, it will begin generating a new one, based on your new position. This feature is particularly handy for dealing with temporary or local conditions that interfere with a route. When construction diverts you from the route the iWAY recommended, you'll often find that the iWAY recalculates your route and builds one that matches the official detour.

The most important step in learning how to follow iWAY's routes is practicing. Use the iWAY as often as possible, and pay attention to the way it "thinks." With time, you'll learn exactly how to get the very most out of the navigation provided by this clever little GPS unit.

Index

A

Accessories, 1, 2, 3, 6
Address Book, 2, 10, 15, 16, 48, 54, 56
Antenna, 2, 63

B

Batteries, 3, 41
Brightness, 1, 39, 40

C

Calibrate Screen, 39, 40, 41
Cancel Navigation, 30, 31
Contact, 1, 2, 10, 14, 15, 16, 34, 43, 45,
48, 54, 68
Contrast, 39, 40
Cursor, 10, 12, 13, 14, 15, 16, 28, 48,
49, 50, 52, 57
Customize Display, 33, 59

D

Data Boxes (Customize Display), 33, 59
Detour, 36, 57, 60
Directions List, 27, 32, 58, 59

E

Equalizer, 24

F

File Transfer, 1, 3, 4, 5, 45, 64

G

GPS Data File, 45

I

Icons, 8, 11, 15, 17, 27, 35, 40
Information Displays (Customize
Display), 33, 59
Installation, 2, 3

K

Keyboard, 15, 23, 40, 48, 49, 50, 52, 53,
54, 55, 56

L

Location Information Button, 10, 14, 15,
16, 58
Location Information Screen, 10, 14, 15,
16, 47, 48, 51, 53, 54

M

Main Menu, 8, 9, 11, 17, 18, 20, 25, 26
Map Mode, 7, 8, 9, 10, 11, 13, 15, 17,
18, 19, 20, 34, 47, 58, 59
Map Orientation, 11, 14
Memory Cards (MMC), 3, 4, 5, 19, 23,
25, 45
Music Mode, 1, 3, 5, 6, 7, 8, 9, 10, 11,
12, 17, 18, 19, 20, 21, 22, 25

N

Navigating, 35
Cancel, 30, 31
Nearest, 7, 16, 29, 48, 49, 50, 51, 54, 57
Now Playing Box, 19, 20, 22

O

Overlay Data, 26, 28, 29, 58

P

Page Displays, 54, 55
Play Control Buttons, 21
Play Lists, 1, 9, 18, 19, 20, 21, 22, 23,
24
POI (Point of Interest), 14, 15, 34, 47,
49, 51, 52, 54
Power, 3, 4, 7, 10, 17, 19, 37, 41

R

Range, 59

Repeat Play List, 19, 24, 56
Reset Options, 43
Route, 1, 9, 10, 11, 15, 16, 17, 18, 27,
28, 29, 30, 31, 32, 33, 35, 36, 43, 45,
46, 47, 48, 50, 51, 52, 56, 57, 58, 59,
60
Routing Options, 31
Cross-Traffic Turns, 32
Interstates, 32
Toll Roads, 32

S

Screen Calibration, 39, 40, 41
Searching, 9, 10, 15, 16, 17, 18, 19, 23,
47, 48, 49, 50, 51, 52, 53, 54, 55, 56
Intersections, 55
Streets, 55, 56
Shuffle Play List, 19, 23
Simulator, 45, 46
Speaker, 2, 19, 21

T

Text Boxes (Customize Display), 33, 59
Touch Screen, 2, 7, 8, 12, 17, 19, 39, 40,

41, 48
Control, 8
Trail, 34, 35, 43, 45
Trip Calculator, 1, 35, 36, 37
Turn Preview, 28, 32, 33, 58, 59

U

Units of Measure, 42
USB-to-PC Cable, 1, 3, 4, 5
Utilities, 1, 35, 36, 37

V

Virtual Keyboard, 48
Visualization Area, 19, 22

W

WAAS, 2, 44
Waypoints, 29, 30, 31

Z

Zooming, 10, 13, 26, 28

FCC Compliance

This device complies with Part 15 of the U.S. Federal Communications Commission (FCC) Rules. Operation is subject to the following two conditions: (1) this device may not cause harmful interference, and (2) this device must accept any interference received, including interference that may cause undesired operation.

Changes or modifications not expressly approved by the manufacturer could void the user's authority to operate the equipment.

Note:

This equipment has been tested and found to comply with the limits for a Class B digital device, pursuant to Part 15 of the FCC Rules. These limits are designed to provide reasonable protection against harmful interference in a residential installation. This equipment generates, uses and can radiate radio frequency energy and, if not installed and used in accordance with the instructions, may cause harmful interference to radio communications. However, there is no guarantee that interference will not occur in a particular installation. If this equipment does cause harmful interference to radio or television reception, which can be determined by turning the equipment off and on, the user is encouraged to try to correct the interference by one or more of the following measures:

- Reorient or relocate the receiving antenna.
- Increase the separation between the equipment and receiver.
- Connect the equipment into an outlet on a circuit different from that to which the receiver is connected.
- Consult the factory customer service department for help.

Lowrance Mapping Database End User License Agreement

The data (“Data”) is provided for your personal, internal use only and not for resale. It is protected by copyright, and is subject to the following terms and conditions which are agreed to by you, on the one hand, and Lowrance Electronics, Inc. (“Lowrance”) and its licensors (including their licensors and suppliers) on the other hand.

© 2004 NAVTEQ. All rights reserved.

The Data for areas of Canada includes information taken with permission from Canadian authorities, including: © Her Majesty the Queen in Right of Canada, © Queen's Printer for Ontario, © Canada Post, GeoBase®.

TERMS AND CONDITIONS

Personal Use Only. You agree to use this Data together with the iWAY™ 350c GPS receiver for the solely personal, non-commercial purposes for which you were licensed, and not for service bureau, time-sharing or other similar purposes; for purposes of clarity, such “personal, non-commercial purposes” shall include use in your internal business operations. Accordingly, but subject to the restrictions set forth in the following paragraphs, you may copy this Data only as necessary for your personal use to (i) view it, and (ii) save it, provided that you do not remove any copyright notices that appear and do not modify the Data in any way. You agree not to otherwise reproduce, copy, modify, decompile, disassemble or reverse engineer any portion of this Data, and may not transfer or distribute it in any form, for any purpose, except to the extent permitted by mandatory laws.

Restrictions. Without limiting the preceding paragraph, you may not use this Data with any products, systems, or applications installed or otherwise connected to or in communication with vehicles, and which are capable of dispatch, fleet management or similar applications.

No Warranty. This Data is provided to you “as is,” and you agree to use it at your own risk. Lowrance and its licensors (and their licensors and suppliers) make no guarantees, representations or warranties of any kind, express or implied, arising by law or otherwise,

including but not limited to, content, quality, accuracy, completeness, effectiveness, reliability, fitness for a particular purpose, usefulness, use or results to be obtained from this Data, or that the Data or server will be uninterrupted or error-free.

Disclaimer of Warranty: LOWRANCE AND ITS LICENSORS (INCLUDING THEIR LICENSORS AND SUPPLIERS) DISCLAIM ANY WARRANTIES, EXPRESS OR IMPLIED, OF QUALITY, PERFORMANCE, MERCHANTABILITY, FITNESS FOR A PARTICULAR PURPOSE OR NON-INFRINGEMENT. Some States, Territories and Countries do not allow certain warranty exclusions, so to that extent the above exclusion may not apply to you.

Disclaimer of Liability: LOWRANCE AND ITS LICENSORS (INCLUDING THEIR LICENSORS AND SUPPLIERS) SHALL NOT BE LIABLE TO YOU: IN RESPECT OF ANY CLAIM, DEMAND OR ACTION, IRRESPECTIVE OF THE NATURE OF THE CAUSE OF THE CLAIM, DEMAND OR ACTION ALLEGING ANY LOSS, INJURY OR DAMAGES, DIRECT OR INDIRECT, WHICH MAY RESULT FROM THE USE OR POSSESSION OF THE INFORMATION; OR FOR ANY LOSS OF PROFIT, REVENUE, CONTRACTS OR SAVINGS, OR ANY OTHER DIRECT, INDIRECT, INCIDENTAL, SPECIAL OR CONSEQUENTIAL DAMAGES ARISING OUT OF YOUR USE OF OR INABILITY TO USE THIS INFORMATION, ANY DEFECT IN THE INFORMATION, OR THE BREACH OF THESE TERMS OR CONDITIONS, WHETHER IN AN ACTION IN CONTRACT OR TORT OR BASED ON A WARRANTY, EVEN IF LOWRANCE OR ITS LICENSORS HAVE BEEN ADVISED OF THE POSSIBILITY OF SUCH DAMAGES. Some States, Territories and Countries do not allow certain liability exclusions or damages limitations, so to that extent the above may not apply to you.

Export Control. You agree not to export from anywhere any part of the Data provided to you or any direct product thereof except in compliance with, and with all licenses and approvals required under, applicable export laws, rules and regulations.

Entire Agreement. These terms and conditions constitute the entire agreement between Lowrance (and its licensors, including their licensors and suppliers) and you pertaining to the subject matter hereof, and supersedes in their entirety any and all written or oral

agreements previously existing between us with respect to such subject matter.

Governing Law. The above terms and conditions shall be governed by the laws of the Illinois, without giving effect to (i) its conflict of laws provisions, or (ii) the United Nations Convention for Contracts for the International Sale of Goods, which is explicitly excluded. You agree to submit to the jurisdiction of Illinois for any and all disputes, claims and actions arising from or in connection with the Data provided to you hereunder.

Government End Users. If the NAVTEQ Data is being acquired by or on behalf of the United States government or any other entity seeking or applying rights similar to those customarily claimed by the United States government, (i) for acquisitions conducted by the Department of Defense, the NAVTEQ Data is licensed with “Limited Rights” in accordance with the rights set forth at DFARS 252.227-7013(b)(3), Technical Data-Noncommercial Items, and NAVTEQ Data delivered or otherwise furnished with “Limited Rights” shall be marked with the “Limited Rights Notice” set forth at DFARS 252.227-7013(f)(3), and shall be treated in accordance with such Notice and; (ii) for civilian agency acquisitions, the NAVTEQ Data is licensed in accordance with the rights set forth at FAR 52.227-14(g)(1), Rights in Data-General (Protection of limited rights data and computer software). In the event that the Contracting Officer requires the delivery of limited rights NAVTEQ Data that has been withheld or would otherwise be withholdable in accordance with FAR 52.227-14(g)(1), the NAVTEQ Data is licensed with “Limited Rights” as set forth in the “Limited Rights Notice” at FAR 52.227-14(g)(2) (Alternate II), which shall be affixed to the NAVTEQ Data and the NAVTEQ Data shall be treated in accordance with such Notice (which shall be marked on any reproduction of these data, in whole or in part).

If the Contracting Officer refuses to use either of the licenses cited in (i) or (ii), herein, the Contracting Officer must notify NAVTEQ prior to seeking additional or alternative rights in the NAVTEQ Data.

LOWRANCE ELECTRONICS FULL ONE-YEAR WARRANTY

"We," "our," or "us" refers to LOWRANCE ELECTRONICS, INC., the manufacturer of this product. "You" or "your" refers to the first person who purchases this product as a consumer item for personal, family or household use.

We warrant this product against defects or malfunctions in materials and workmanship, and against failure to conform to this product's written specifications, all for one (1) year from the date of original purchase by you. WE MAKE NO OTHER EXPRESS WARRANTY OR REPRESENTATION OF ANY KIND WHATSOEVER CONCERNING THIS PRODUCT. Your remedies under this warranty will be available so long as you can show in a reasonable manner that any defect or malfunction in materials or workmanship, or any non-conformity with the product's written specifications, occurred within one year from the date of your original purchase, which must be substantiated by a dated sales receipt or sales slip. Any such defect, malfunction, or non-conformity which occurs within one year from your original purchase date will either be repaired without charge or be replaced with a new product identical or reasonably equivalent to this product, at our option, within a reasonable time after our receipt of the product. If such defect, malfunction, or non-conformity remains after a reasonable number of attempts to repair by us, you may elect to obtain without charge a replacement of the product or a refund for the product. THIS REPAIR, OR REPLACEMENT OR REFUND (AS JUST DESCRIBED) IS THE EXCLUSIVE REMEDY AVAILABLE TO YOU AGAINST US FOR ANY DEFECT, MALFUNCTION, OR NON-CONFORMITY CONCERNING THE PRODUCT OR FOR ANY LOSS OR DAMAGE RESULTING FROM ANY OTHER CAUSE WHATSOEVER. WE WILL NOT UNDER ANY CIRCUMSTANCES BE LIABLE TO ANYONE FOR ANY SPECIAL, CONSEQUENTIAL, INCIDENTAL, OR OTHER INDIRECT DAMAGE OF ANY KIND.

Some states do not allow the exclusion or limitation of incidental or consequential damages, so the above limitations or exclusions may not apply to you.

This warranty does NOT apply in the following circumstances: (1) when the product has been serviced or repaired by anyone other than us; (2) when the product has been connected, installed, combined, altered, adjusted, or handled in a manner other than according to the instructions furnished with the product; (3) when any serial number has been effaced, altered, or removed; or (4) when any defect, problem, loss, or damage has resulted from any accident, misuse, negligence, or carelessness, or from any failure to provide reasonable and necessary maintenance in accordance with the instructions of the owner's manual for the product.

We reserve the right to make changes or improvements in our products from time to time without incurring the obligation to install such improvements or changes on equipment or items previously manufactured.

This warranty gives you specific legal rights and you may also have other rights which may vary from state to state.

REMINDER: You must retain the sales slip or sales receipt proving the date of your original purchase in case warranty service is ever required.

**LOWRANCE ELECTRONICS
12000 E. SKELLY DRIVE, TULSA, OK 74128
(800) 324-1356**

How to Obtain Service...

...in the USA:

We back your investment in quality products with quick, expert service and genuine Lowrance parts. If you're in the United States and you have technical, return or repair questions, please contact the Factory Customer Service Department. Before any product can be returned, you must call customer service to determine if a return is necessary. Many times, customer service can resolve your problem over the phone without sending your product to the factory. To call us, use the following toll-free number:

800-324-1356

8 a.m. to 5 p.m. Central Standard Time, M-F

Lowrance Electronics may find it necessary to change or end our shipping policies, regulations, and special offers at any time. We reserve the right to do so without notice.

...in Canada:

If you're in Canada and you have technical, return or repair questions, please contact the Factory Customer Service Department. Before any product can be returned, you must call customer service to determine if a return is necessary. Many times, customer service can resolve your problem over the phone without sending your product to the factory. To call us, use the following toll-free number:

800-661-3983

905-629-1614 (not toll-free)

8 a.m. to 5 p.m. Eastern Standard Time, M-F

...outside Canada and the USA:

If you have technical, return or repair questions, contact the dealer in the country where you purchased your unit. To locate a dealer near you, visit our web site, www.lowrance.com and look for the Dealer Locator.

**Copyright © 2005 Lowrance Electronics, Inc.
All rights reserved.**

No part of this manual may be copied, reproduced, republished, transmitted or distributed for any purpose, without prior written consent of Lowrance. **Any unauthorized commercial distribution of this manual is strictly prohibited.**

Lowrance® is a registered trademark and iWAY™ is a trademark of Lowrance Electronics, Inc.



Points of Interest Data in this unit are by infoUSA, copyright © 2001-2005, All Rights Reserved. infoUSA is a trademark of infoUSA, Inc.



Mapping Database, copyright © 2005 NAVTEQ. NAVTEQ ON BOARD is a trademark of NAVTEQ.

Lowrance Electronics may find it necessary to change or end our policies, regulations and special offers at any time. We reserve the right to do so without notice. All features and specifications subject to change without notice. All screens in this manual are simulated. This edition developed for software version: 1.0.0.

For free owner's manuals and the most current information on this product, its operation and accessories, visit our web site:

www.lowrance.com

Lowrance Electronics Inc.
12000 E. Skelly Dr.
Tulsa, OK USA 74128-2486
Printed in USA.