

# jWIN

## 2.0" TFT Color LCD Video MP3 Player with FM Radio



### **Instruction Manual JX-MP301 (302, 304)**

Please read this manual carefully before operating and save it for future reference.

**Have a question? Please visit <http://www.jWIN.com>**

## USER SAFETY GUIDE

### INSTRUCTIONS ON ENVIRONMENTAL PROTECTION




Do not dispose of this product in the usual household garbage at the end of its life cycle; bring it to a collection point for the recycling of electrical and electronic appliances. This symbol on the product means the instructions for use or the packing will inform about the methods for disposal. The materials are recyclable as mentioned in its marking. By recycling, material recycling, or other forms of re-utilization of old appliances, you make an important contribution to protect the environment. Please inquire at your local community administration for the authorized disposal location.

### Important Safety Instructions

1. **READ INSTRUCTIONS** - All the safety and operating instructions should be read before the appliance is operated.
2. **RETAIN INSTRUCTIONS** - The safety and operating instructions should be retained in a secure place for future reference.
3. **HEED WARNINGS** - All warnings on the appliance and in the operating instructions should be observed.
4. **FOLLOW INSTRUCTIONS** - All operating and use instructions should be followed.
5. **WATER AND MOISTURE** - The appliance should not be used near water, such as near a bathtub, kitchen sink, laundry tub, and/or swimming pool.

## USER SAFETY GUIDE

### Important Safety Instructions – Continued

6. **HEAT** - The appliance should be situated away from heat sources such as radiators, heat registers, stoves, or other appliances (including amplifiers) that produce heat.
7. **POWER SOURCES** - The appliance should be connected to a power supply only of the type described in the operating instructions or as marked on the appliance.
8. **CLEANING** - The appliance should be cleaned with a dry cloth.
9. **OBJECT AND LIQUID ENTRY** - Care should be taken so that objects do not fall and liquids are not spilled into the device's openings.
10. **CARTS AND STANDS** - The appliance should be used only with a cart or stand that is recommended by the manufacturer. An appliance and cart combination should be moved with care. Quick stops, excessive force, and uneven surfaces may cause the appliance and cart combination to overturn. 
11. **SERVICING** - The user should not attempt to service the appliance beyond that described in the user's operating instructions. All other servicing should be referred to qualified service professional.
12. **DAMAGE REQUIRING SERVICE** - The appliance should be serviced by qualified service professional when:
  - a. The power-supply cord or plug has been damaged.
  - b. Objects have fallen into, or liquid has been spilled into the appliance's apertures.
  - c. The appliance has been exposed to rain.

## USER SAFETY GUIDE

### Important Safety Instructions – Continued

- d. The appliance has been dropped and suffered damage.
  - e. The appliance does not appear to operate normally, or exhibits a change in performance.
13. **BATTERY USAGE** - To prevent battery leakage, which may result in bodily injury, property damage or damage to the unit, follow these instructions:
14. **LEAD AND MERCURY** - This product may contain lead and/or mercury. Disposal of these materials may be regulated by your local authorities due to environmental considerations. For more detailed disposal or recycling information, please contact your local authorities or the EIA (Electronic Industries Alliance) – <http://www.eiae.org>

### FCC Notice (USA)

This device complies with part 15 of the FCC Rules. Operation is subject to the condition that this device does not cause harmful interference.

## USER SAFETY GUIDE

**Do not change or modify this equipment. Any changes or modifications not expressly approved by the party responsible for compliance could void the user's authority to operate the equipment.**

### Important Notes on Hearing

Your hearing is very important to you and to us. Please take care when operating this equipment. We strongly recommend you to follow the guidelines below in order to prevent possible damage to or loss of hearing.

After continuously listening to the loud sounds, hearing will adapt and will give the impression that the volume has been reduced. What seems normal may, in fact, be harmful. To guard against this **BEFORE HEARING ADAPTS**, set the volume at a low level and slowly increase the volume level until sound can be heard comfortably and clearly without distortion. Damage to hearing is accumulative and is irreversible. Any ringing or discomfort in the ears indicates that the volume is too loud. Once a comfortable listening level is established, **DO NOT INCREASE THE VOLUME LEVEL FURTHER.**

In the use of headphones, please take more caution. Hearing experts say that continuous listening to loud music can damage hearing, especially when using headphones.

## INTRODUCTION

Thank you for purchasing the JX-MP301 (302, 304). Unpack the unit and make sure all accessories are put aside so they will not be lost.

### **2.0" TFT Color LCD Video MP3 Player with FM Radio and Touch Screen**

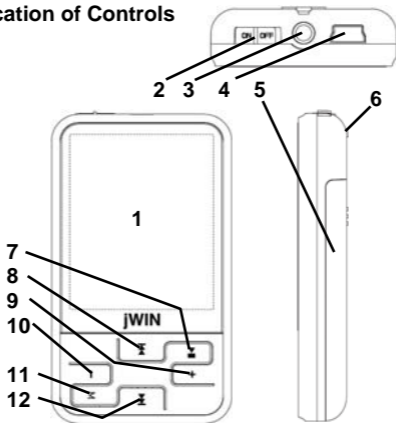
- Compact, slim, sleek and stylish design
- 2.0" TFT color liquid crystal display (LCD)
- Built-in flash memory (1GB / 2GB / 4GB)
- File storage capability
- Integrated FM stereo radio (87-108MHz)
- USB 2.0 for fast file transfer
- Supports MP3, WMA, AVI, JPEG, and TXT files
- Photo viewer
- Portable E-book reader (TXT file support)
- Built-in digital voice / FM radio recorder
- Built-in speaker
- Supports multiple languages
- Supports ID3 tag and lyric display
- 7 preset EQ (Normal, 3D, Rock, Pop, Classic, Bass, Jazz)
- User EQ
- Replaceable and rechargeable 600mAh battery

#### **What's included**

- USB Cable
- Stereo Earphones
- Driver / Instruction Manual (ENG/SP/FR) / Video Conversion Software CD

## GETTING STARTED

### Location of Controls



1. Color LCD Screen	7. <b>PLAY/PAUSE</b> button
2. Power On/Off switch	8. <b>FW</b> button
3. Headphone jack	9. <b>Vol+</b> button
4. Mini USB jack	10. <b>Vol-</b> button
5. Battery compartment	11. <b>M</b> button
6. Microphone	12. <b>FF</b> button

## GETTING STARTED

### Minimum System Requirements

- Intel Pentium processor 200MHz and above.
- Windows 2000 and Windows XP.
- 32MB of RAM (128MB recommended)
- Up to 100MB of available hard-disk space
- Standard USB Port

### USB Connection

- Connect one end of the supplied mini USB cable to the player.
- Connect the other end of the mini USB cable to the computer.
- Charging process begins automatically.
- You can also charge the player via AC Power Adapter (not included)



## OPERATING INSTRUCTIONS

### Power ON / Power OFF

Turn Power ON/OFF switch to ON position, press and hold the **[▶||]** button to power ON.

In any mode, press and hold the **[▶||]** button to power OFF.

### Set Key Lock

Press and hold the **[▶||]** button and the **[M]** button for two (2) seconds at the same time to set Key Lock.

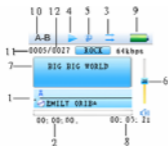
**Note:** All keys on the player will be locked.

In Lock mode, press and hold **[▶||]** button and **[M]** button (for 2 seconds) at the same time again to unlock.

**Note:** All buttons on the player will be unlocked.

### Playing Music

In Main menu, select Music menu and touch **[M]** button to enter Music mode. Music playback begins automatically. During Music playback, touch **[M]** button to enter Music playlist.



Press **[FF]** or **[FW]** key to select a Music file. Touch **[M]** button and Music playback begins automatically. During Music playback, press **[▶||]** button to pause. While in Pause mode, press **[▶||]** button again to resume playback.

**OPERATING INSTRUCTIONS****Playing Music-continued**

<b>No</b>	<b>Function</b>	<b>No</b>	<b>Function</b>
1	Song Title & ID3 Display	7	Equalizer / Song Lyrics Display
2	Playback Time	8	Track Duration
3	Playback Mode	9	Battery Indicator
4	Play/Pause Status	10	A-B Repeat
5	Playback Setting	11	Current Track number
6	Volume Level	12	Total Track number

**Adjusting the Volume**

During Music playback, press the [VOL+] or [VOL-] buttons to adjust volume level.

**Note:** Pressing and holding the [VOL+] or [VOL-] buttons will also adjust the volume level (value settings from 00 to 40).

**Skipping to Previous / Next Music File**

During Music playback, Press the [FF] or [FW] buttons to skip to Previous or Next track.

## OPERATING INSTRUCTIONS

### Deleting a Music File

During Music playback, press the **[M]** button to enter the submenu.

1. Touch the **[FF]** or the **[FW]** buttons to select a folder or Music file.
2. When a folder is selected, touch the **[M]** button to enter folder.
3. When a Music file is selected, press the **[VOL-]** button to delete.
4. At the "Delete File" prompt "YES / NO", scroll to "YES" option and touch the **[M]** button to confirm deletion.
5. When the file is deleted, the player returns to previous submenu options.

**Note:** Press and hold the **[M]** button to return to Main menu.

### A-B Repeat

During Music playback, press and hold the **[M]** button.

1. The "A-B Repeat" indicator displays "A".
  2. Press and hold the **[M]** button again and "A-B" is displayed.
  3. Music will now repeat "A-B" playback in a loop.
- To cancel "A-B" repeat playback, press and hold the **[M]** button to resume.

## OPERATING INSTRUCTIONS

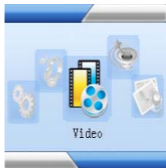
### Synchronous Song Lyrics Display

When a Music file in the player has a song lyrics file with same file name, song lyrics will be displayed automatically during Music playback.

### Video Playback

In Main menu, select Video menu and touch the **[M]** button to enter Video mode.

- When Video playlist is displayed, touch the **[FF]** or **[FW]** buttons to select a Video file.
- When a folder is selected, touch the **[M]** button to enter folder.
- When a Video file is selected, touch the **[M]** button and playback begins automatically.



### FW / FF a Video file

During Video playback, press and hold the **[FF]** or **[FW]** buttons to FW or FF playback.

### Adjusting the Volume

During Video playback, press the **[VOL+]** or **[VOL-]** buttons to adjust volume level.

**Note:** Pressing and holding the **[VOL+]** or **[VOL-]** buttons will also adjust the volume level (value settings from 00 to 40).

## OPERATING INSTRUCTIONS

### Deleting a Video File

During Video playback, press the **[M]** button to enter the submenu.

1. Touch the **[FF]** or the **[FW]** buttons to select a folder or a Video file.
2. When a folder is selected, touch the **[M]** button to enter folder.
3. When a Video file is selected, press the **[VOL-]** button to delete.
4. At the **"Delete File"** prompt **"YES / NO"**, scroll to **"YES"** option and touch the **[M]** button to confirm deletion.
5. When the file is deleted, the player returns to previous submenu options.

**Note:** Press and hold the **[M]** button to return to Main menu.

### Listening to the Radio

The earphones must be connected to the player when using FM mode. They act as an antenna for radio frequency reception.

- In Main menu, select FM menu and press the **[M]** button to enter FM mode.



## OPERATING INSTRUCTIONS

### Listening to the Radio-continued

#### Manual Frequency Search

In FM mode, touch the **[M]** button to enter submenu.

1. Scroll to "Manual" option and touch the **[M]** button.
2. Touch the **[FF]** or the **[FW]** buttons to manually select a favorite frequency.
3. To manually preset the selected frequency, touch the **[M]** button and scroll to "MEM" option followed by the **[M]** button.
4. When the preset station list is displayed, touch the **[FF]** or the **[FW]** buttons to scroll to a desired station shown in red color, followed by the **[M]** button to save the frequency.
5. At the "Save Channel" prompt, select "YES" option and press the **[M]** button to confirm changes.
6. Press the **[▶||]** button to return.

**Note:** The preset frequency will now be displayed in the preset station list.

#### Auto Frequency Search

In FM mode, touch the **[M]** button to enter submenu.

1. Scroll to "Auto" option and touch the **[M]** button.
2. The player will automatically scan and save any available frequencies in sequential order.

## OPERATING INSTRUCTIONS

### Playback a Preset Frequency

In FM mode, touch the **[M]** button to enter submenu.

1. Scroll to "Preset" option and touch the **[M]** button to enter preset mode.
2. Touch the **[FF]** or the **[FW]** buttons to scroll to the previous or next preset frequency. (Example: CH:01, CH02 etc.)

Press and hold the **[M]** button to return to Main menu.

### Deleting a Preset Frequency

In FM mode, touch the **[M]** button to enter submenu.

1. Scroll to "DEL" option followed by the **[M]** button. The preset station list will be displayed.
2. Touch the **[FF]** or the **[FW]** buttons to select a preset frequency to be deleted followed by "M" key.
3. At the "Del Channel" prompt, select "YES" option and press the **[M]** button to confirm deletion.
4. Press the **[▶||]** button to return

**Note:** The preset frequency that has just been deleted will now display "Empty" temporarily.

## OPERATING INSTRUCTIONS

### FM Recording

During FM playback, press and hold [▶||] key to enter FM recording mode.

1. Press the [▶||] button and recording begins automatically.
2. During recording, press the [▶||] button to pause.
3. Press the [▶||] button again to resume.
4. To end and save the recording, press and hold the [M] button.

**Notes:** The FM recording will be saved as filename "FM00001.WAV" in the player root directory when connected to the computer.

FM recording can be played in Music mode.

\* In areas where the signal is weak, some channels may be unavailable, or reception may be poor.



## OPERATING INSTRUCTIONS

### Viewing Photos

#### Displaying a Photo File

In Main menu, select Photo menu and press the **[M]** button to enter Photo mode.



1. When Photo playlist is displayed, touch the **[FF]** or the **[FW]** buttons to select a Photo file. When a folder is selected, touch the **[M]** button to enter folder.
2. When a Photo file is selected, touch the **[M]** button and Photo playback begins automatically.
3. Touch the **[FF]** or the **[FW]** buttons to view previous or next photo file.

During Photo playback, touch the **[M]** button to return to Photo playlist or press and hold the **[M]** button to return to Main menu.

#### Deleting a Photo File

- In Photo playlist, when a photo file is selected, press **[VOL-]** key to delete.
- At the "Delete File" prompt, select "YES" option and press the **[M]** button to confirm deletion.

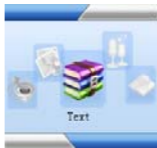
## OPERATING INSTRUCTIONS

### Text Mode

#### Reading Text

In Main menu, select Text menu and touch the **[M]** button to enter Text mode.

1. When Text playlist is displayed, touch the **[FF]** or the **[FW]** buttons to select a Text file.
2. When a folder is selected, touch the **[M]** button to enter folder.
3. When a Text file is selected, touch the **[M]** button and playback begins automatically.
4. Touch the **[FF]** or the **[FW]** buttons to scroll backward or forward to view text.



During Text playback, press the **[M]** button to return to Text playlist or press and hold the **[M]** button to return to Main menu.

#### Deleting a Text File

1. In Text playlist, when a Text file is selected, press **[VOL-]** key to delete.
2. At the "Delete File" prompt, select "YES" option and press the **[M]** button to confirm deletion.

## OPERATING INSTRUCTIONS

### To Bookmark a Page

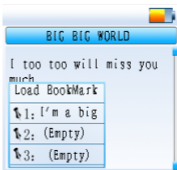
The Text function supports up to 3 bookmark pages for quick search purpose.

1. During Text playback, touch the **[FF]** or the **[FW]** buttons to scroll backward or forward to view Text.
2. At the desired page to create a bookmark, press the **[▶||]** button and the 3 bookmark will be displayed.
3. Touch the **[FF]** or the **[FW]** buttons to Scroll to any of the 3 following bookmarks and touch the **[M]** button to confirm settings.

### To View a Bookmark Page

During Text playback, press **[M]** button to view the 3 bookmarks.

- Touch the **[FF]** or the **[FW]** buttons to select a bookmark followed by the **[▶||]** button and the bookmarked page will be displayed automatically.



## OPERATING INSTRUCTIONS

### Using the Recorder

#### Record Mode

In Main menu, select Record menu and touch the **[M]** button to enter Record mode.

1. In Record mode, touch the **[▶||]** button and recording begins automatically.
2. During recording, press the **[▶||]** button to pause recording and press the **[▶||]** button again to resume.
3. To end recording, press and hold the **[M]** button to end and save the recording.

**Note:** Recording files (WAV format) can be played in Music menu.

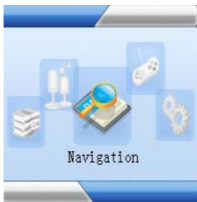


## OPERATING INSTRUCTIONS

### Explorer Mode

The Explorer mode displays all the folders and files stored in the player.

1. In Main menu, select Explorer menu and touch the **[M]** button to enter.
2. When Explorer playlist is displayed, touch the **[FF]** or the **[FW]** buttons to select a file.
3. When a folder is selected, touch the **[M]** button to enter folder.
4. When a file is selected, touch the **[M]** button and playback begins automatically.



**Note:** During playback, press and hold the **[M]** button to return to Main menu.

### Deleting a File

1. In Explorer playlist, when a file is selected, press the **[VOL-]** button to delete.
2. At the "Delete File" prompt, select "YES" option and touch the **[M]** button to confirm deletion.

**Note:** Deletion of folder is NOT supported.

## OPERATING INSTRUCTIONS

### Playing the Brick Game

The player comes with a free built-in Brick Game.

- In Main menu, select Game menu and touch the **[M]** button to enter Game mode.



### Game Control Keys

1. To begin / pause, press the **[▶||]** button.
2. To move to left or right, touch the **[VOL+]** or the **[VOL-]** buttons.
3. To rotate the "Falling Brick", press the **[FW]** button.

**Note:** In Game mode, press and hold the **[M]** button to return to Main menu.

### Settings Mode

There are 7 settings available in the Settings mode.

- In Main menu, select Settings menu and touch the **[M]** button to enter Settings mode.
- Touch the **[FF]** or the **[FW]** buttons to select the desired settings in each option.



## OPERATING INSTRUCTIONS

### Music Settings

#### Repeat Mode

- Once: To play all the files once.
- Repeat 1: To repeat one file.
- Folder Once: To play all the files in the folder once.
- Folder Repeat: To repeat all files in the folder.
- All Once: To repeat all files once.
- All Repeat: To repeat all files.
- Intro: To play the first 10 seconds of each music file.

#### Play Mode

- Order: Music playback in sequence.
- Shuffle: Music playback randomly.

#### EQ Select

- Normal / 3D / Rock / Pop / Classic/ Bass / Jazz / User EQ
- User EQ Mode (User can customize their favorite EQ settings).

In the User EQ settings, press **[VOL +]** or **[VOL -]** buttons to adjust on each individual frequency segment. (60Hz, 300 Hz, 1KHz, 3KHz, 6KHz)

- Frequency settings are adjusted in -6dB~+6dB intervals. Touch the **[FF]** or the **[FW]** buttons to skip or adjust the next frequency segment. (active segment will be indicated in red color)

Touch the **[FF]** or the **[FW]** buttons to skip to "YES" option and press the **[M]** button to save changes and exit.

## OPERATING INSTRUCTIONS

### FM Radio Settings

- Stereo SW: Set FM stereo mode ON/OFF
- ON
- OFF
- FM Region: Configure FM for your region.
  - China
  - Europe
  - Japan
  - USA

### Record Settings

- REC Quality: Recording quality & file size settings
- High Quality: Better recording quality with larger file size.
- General Quality: Normal recording quality with smaller file size.
- REC Volume: The highest settings +5 will produce the loudest recording quality. +1 / +2 / +3 / +4 / +5

### Display Settings

- Blight Time: To set the backlight ON timer (unit in seconds). This function will be disabled when the time is set to Always On.
- 5s / 10s / 15s / 20s / 30s / Always On
- Lum: To set the backlight brightness. 1 / 2 / 3 / 4 / 5
- Blight Mode: When set to Power Saver, the screen will turn OFF according to the Blight Time settings (Press any key to resume).
- Normal / Power Saver



## OPERATING INSTRUCTIONS

### System Settings

- About: To display information on firmware version, date and memory status.
- Upgrade: For firmware upgrade (if any).
- Default Set: To restore the player to original default settings.

### Power Off Time Settings

OFF/10 Minutes/15 Minutes/30 Minutes/60 Minutes/120 Minutes

### Language Settings

To change the desired language settings on the player.

### Using the AVI Converter Software

This player supports AVI format video files and can transform other video formats to the supported AVI format by using the bundled AVI Converter Software.

The software fully supports fast speed video conversion of multi-video format into high quality AVI format.

System Requirements to Install AVI Converter Software:

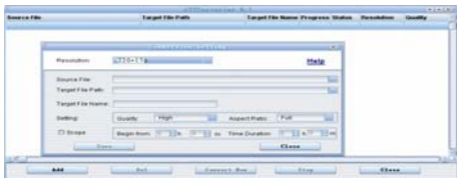
- Intel or AMD processor (Intel Pentium 3 and above, including Intel Celeron series).
- Windows 2000 / Windows XP



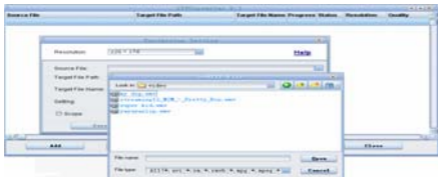
## OPERATING INSTRUCTIONS

### Installation the AVI Converter Software

1. Connect the player to PC and execute the preloaded AVI Converter setup program (EXE file) bundled in the player to begin.
2. Follow the on-screen instructions to complete the installation.
3. Upon a successful installation, an AVI Converter program icon will be created on the computer desktop.
4. Double click on the AVIConverter icon to begin.
5. Click on "Add" button to select a video file to convert.



6. Click on Source File button.



## OPERATING INSTRUCTIONS

### Installation the AVI Converter Software-continued

7. Select the Target File Path button to save the converted video file. (Keep the rest of the settings as default and Click on Save button, followed by Close button)



8. Click on Convert Now button to start video conversion process



## OPERATING INSTRUCTIONS

### **Installation the AVI Converter Software-continued**

Conversion is complete when the status information shows 100% and OK. Click on Close button to quit.

Finally, transfer (using copy & paste) the converted video file (AVI format) into the player and you are now ready for video playback.

**Note:** Please use only the bundled AVI Converter Software in this player for video conversion. Video files converted using third party software might not work properly with this player.

## TROUBLESHOOTING

- **No power:** Please check if it is power ON
- **No sound from the earphone:** 1. Make sure the volume level is not set to "0". 2. Check if the earphone is properly connected to the player. 3. Check if the music file is corrupted. Try again with other music files.
- **Error message: "Warning File Format Error":** Please try the following: Turn the Power ON/OFF safety switch to OFF. Connect the player to the PC and remove the file that is corrupted or non-standard audio/video file on the player. Disconnect the player from the computer and try again.
- **What is the common file type that is causing the "Warning File Format Error" error?** When any file type is not supported by the player is detected, the error message will occur. If this error occurred on a video file, try to convert the video file by using the AVI Converter and try again.
- **Cannot transfer music:** 1. Check if the USB cable is working properly. 2. Make sure the product drivers has been installed correctly (if require). 3. Check if the computer USB port is working properly. Restart the computer and try again.

## SPECIFICATIONS

- Memory: (1GB / 2GB / 4GB), Flash
- Display: 2.0" TFT Color LCD (220 x 176 / 262K real color)
- Audio frequency: 20 – 20kHz
- Headphone Output: 5mW (L) + 5mW (R), 32Ω
- Supported file format: MP3, WMA, AVI, JPEG, TXT
- Supported languages: English, French, Italian, Dutch, Spanish, Portuguese, Russian, Chinese (traditional) , Chinese (simple) , Japanese, Korean
- Connectivity
  - 3.5mm stereo headphone jack
  - Mini USB port
- Power Sources
  - Replaceable rechargeable 600mAh battery
- System Requirements: MS windows 98 / ME / 2000 / XP (May require driver installation)
- Frequency Range:
  - FM: 87MHz – 108MHz
- Unit Dimensions (W x H x D): 3" x 1.7" x 0.5" (76mm x 43mm x 14mm)
- Unit Weight: Approx. 1.7 oz (47 g)

\* Features and specifications are subject to change without prior notification. Dimensions and weights are approximate.



**TEL: 516-626-7188**

**FAX: 516-626-7105**

**website: [www.jWIN.com](http://www.jWIN.com)**

© 2008 jWIN Electronics Corp. All rights reserved. No portion of this printed material or product enclosed herewith including design, shape and graphics, may be reproduced or transmitted in any form without the prior written consent of jWIN Electronics Corp. by any means, electronic or mechanical, including photocopying, recording or use of an information storage and retrieval system. Any unauthorized distribution or reproduction of this printed material or product, or any portion thereof, will be prosecuted to the fullest possible extent of the law.