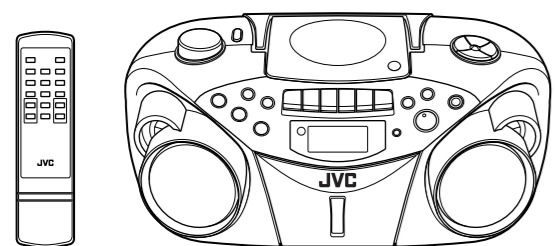


**JVC****CD PORTABLE SYSTEM****RC-EX26B**

ENGLISH

**INSTRUCTIONS****Thank you for purchasing this JVC product.**

Please read these instructions carefully before starting operation to be sure to obtain optimum performance and a longer service life from the unit.

0205NSMBICORI  
EN ©2005 Victor Company of Japan, Limited

LVT1382-009A [B]

**SAFETY PRECAUTIONS****IMPORTANT for the U.K.**

**DO NOT** cut off the mains plug from this equipment. If the plug fitted is not suitable for the power points in your home or the cable is too short to reach a power point, then obtain an appropriate safety approved extension lead or consult your dealer.

**BE SURE** to replace the fuse only with an identical approved type, as originally fitted.

If nonetheless the mains plug is cut off ensure to remove the fuse and dispose of the plug immediately, to avoid a possible shock hazard by inadvertent connection to the mains supply.

If this product is not supplied fitted with a mains plug then follow the instructions given below:

**IMPORTANT.**

**DO NOT** make any connection to the terminal which is marked with the letter E or by the safety earth symbol or coloured green or green-and-yellow.

The wires in the mains lead on this product are coloured in accordance with the following code:

Blue : Neutral  
Brown : Live

As these colours may not correspond with the coloured markings identifying the terminals in your plug proceed as follows:

The wire which is coloured blue must be connected to the terminal which is marked with the letter N or coloured black.

The wire which is coloured brown must be connected to the terminal which is marked with the letter L or coloured red.

**IF IN DOUBT - CONSULT A COMPETENT ELECTRICIAN.**

**Caution** — **STANDBY/ON switch!**

Disconnect the mains plug to shut the power off completely. The **STANDBY/ON** switch in any position does not disconnect the mains line. The power can be remote controlled.

**CAUTION**

To reduce the risk of electrical shocks, fire, etc.:

- Do not remove screws, covers or cabinet.
- Do not expose this appliance to rain or moisture.

**IMPORTANT FOR LASER PRODUCTS**

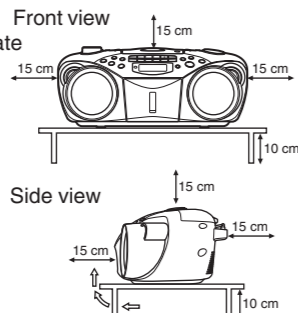
- CLASS 1 LASER PRODUCT
- CAUTION:** Do not open the top cover. There are no user serviceable parts inside the unit; leave all servicing to qualified service personnel.
- CAUTION:** Visible and invisible laser radiation when open and interlock failed or defeated. Avoid direct exposure to beam.
- REPRODUCTION OF LABEL: CAUTION LABEL, PLACED INSIDE THE UNIT.

<b>CAUTION -</b>	INVISIBLE LASER RADIATION WHEN OPEN AND INTERLOCKS DEFEATED. AVOID EXPOSURE TO BEAM.
<b>VORSICHT !</b>	UNSICHTBARE LASERSTRAHLUNG TRITTS AUS, WENN DECKEL GEFÖFFNET UND WENN SICHERHEITVERRIEGELUNG ÜBERBRÜCKT IST. NICHT DEM STRAHL AUSSETZEN!
<b>WARNING -</b>	OSYNLIG LASERSTRÅLNING NÄR DENNA DEL ÄR ÖPPNAD OCH SPÄRR ÄR URKOPPLAD STRÅLEN ÄR FARLIG.
<b>ADVARSEL -</b>	USYNLIG LASERSTRÅLING VED ÅBNING NÄR SIKKERHEDSAFBRYDERE ER UDE AF FUNKTION. UNDGÅ UDSÆTTELSE FOR STRÅLING.

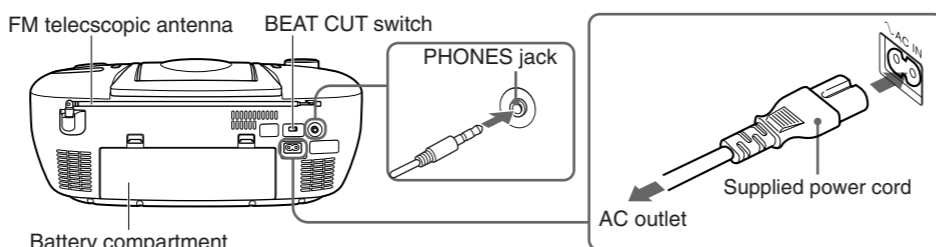
**Caution: Proper Ventilation**

To avoid risk of electric shock and fire, and to prevent damage, locate the apparatus as follows:

- Front:  
No obstructions and open spacing.
- Sides/ Top/ Back:  
No obstructions should be placed in the areas shown in the illustrations on the right.
- Bottom:  
Place on the level surface. Maintain an adequate air path for ventilation by placing on a stand with a height of 10 cm or more.

**FIRST THINGS**

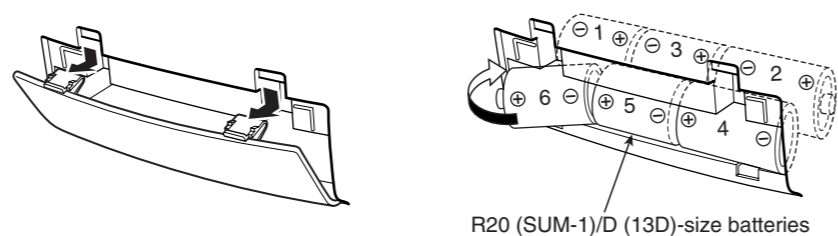
This portable system operates on battery or AC power.

**INSERTING BATTERIES****1 Open the battery compartment cover.**

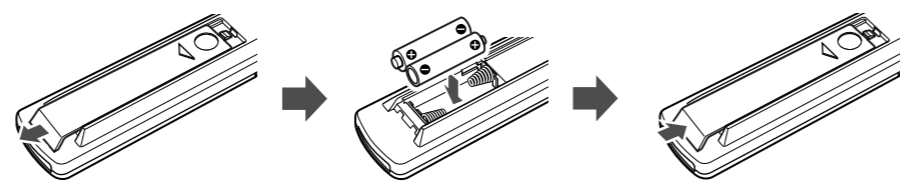
Pull the battery compartment cover toward you while pressing the sections marked by the arrows.

**2 Insert six R20 (SUM-1)/D (13D)-size batteries. (not supplied)**

Be sure to insert the batteries with the (+) and (-) terminals positioned correctly.

**3 Replace the battery compartment cover.****Inserting Batteries into the Remote Control Unit:**

Match the polarity (+ and -) of the batteries. R03 (UM4)/AAA (24F) x2 (supplied)



**Note: The battery power will be switched off when you plug the power cord into the ~ AC IN jack on the unit.**

**CAUTION:**

To avoid battery leakage or explosion, handle batteries properly.

- If you are not going to use your system for a month or more, remove the batteries from the battery compartment.
- Dispose of batteries in the proper manner, according to federal, state, and local regulations.
- Do not mix with different battery types or with new and old ones, or do not attempt to charge a battery not intended to be recharged.
- Discard leaky batteries immediately. Leaking batteries can cause skin burns or other personal injury.

**SUPPLYING AC POWER**

Plug the power cord into the ~ AC IN jack on the back of the unit, and into an AC power outlet.

**Note:** To switch off the system completely, unplug the power cord.

**CAUTIONS:**

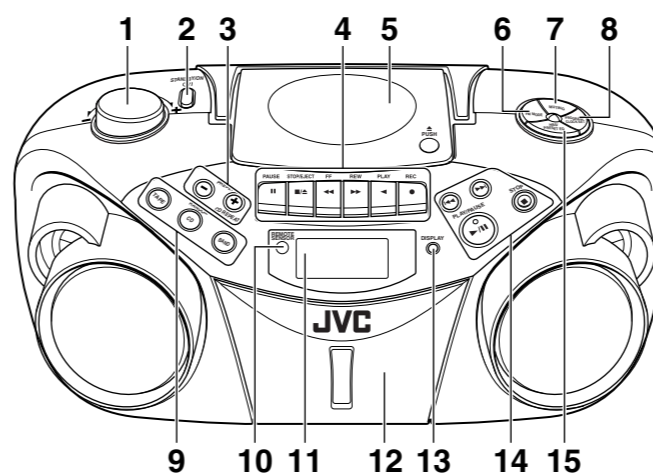
- ONLY USE JVC POWER CORD PROVIDED WITH THIS UNIT TO AVOID MALFUNCTION OR DAMAGE TO THE UNIT. REMOVE BATTERIES WHEN USING THE POWER CORD.**
- BE SURE TO UNPLUG THE POWER CORD FROM THE OUTLET WHEN GOING OUT OR WHEN THE UNIT IS NOT IN USE FOR AN EXTENDED PERIOD OF TIME.**

**USING HEADPHONES**

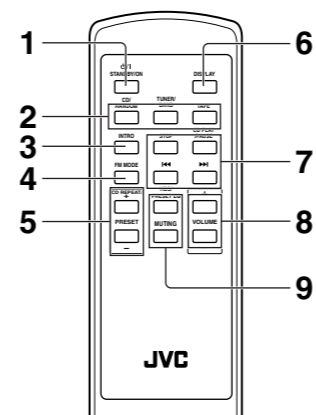
Connect commercially available headphones to the PHONES jack on the rear of the main unit. While the headphones are connected, the speakers do not produce any sound. Before connecting the headphones, make sure to turn down the sound volume.

**ANTENNAS**

The AM antenna is built in, so adjusting the position of the unit may help AM reception. The FM telescopic antenna on the back of the unit can be extended and rotated for better FM reception.

**NAMES OF PARTS AND CONTROLS****Top and front sides:****Main unit**

- |                             |                         |
|-----------------------------|-------------------------|
| 1 VOLUME knob               | 9 TAPE button           |
| 2 STANDBY/ON  button        | CD/RANDOM button        |
| 3 PRESET - button           | TUNER/BAND button       |
| PRESET + / CD REPEAT button | 10 REMOTE SENSOR        |
| 4 Tape operation buttons    | 11 Display window       |
| PAUSE  button               | 12 Cassette deck        |
| STOP/EJECT  button          | 13 DISPLAY button       |
| FF  button                  | 14  button              |
| REW  button                 | button                  |
| PLAY  button                | PLAY/PAUSE  button      |
| REC  button                 | STOP  button            |
| 5 CD door                   | 15 HBS/PRESET EQ button |
| 6 FM MODE button            |                         |
| 7 MUTING button             |                         |
| 8 PROGRAM/CLOCK SET button  |                         |

**Names of buttons:****Remote control unit**

- |                              |                        |
|------------------------------|------------------------|
| 1 STANDBY/ON  button         | 6 DISPLAY button       |
| 2 CD/RANDOM button           | 7 STOP button          |
| TUNER/BAND button            | CD PLAY/PAUSE button   |
| TAPE button                  | button                 |
| 3 INTRO button               | button                 |
| 4 FM MODE button             | 8 VOLUME + button      |
| 5 PRESET + /CD REPEAT button | VOLUME - button        |
| PRESET - button              | 9 HBS/PRESET EQ button |
|                              | MUTING button          |

**GENERAL CONTROLS**

STANDBY/ON - Press to turn on/off the unit.

The display window lights up when the unit is turned on. (Note, however, that the display window does not light even when the unit is turned on if the unit is operated on batteries.)

**SETTING THE CLOCK**

- Press DISPLAY.  
The clock flashes on the display window.
  - Press and hold PROGRAM/CLOCK SET for more than 2 seconds.  
The hour digits start flashing.
- 
- Press or to adjust the hour, then press PROGRAM/CLOCK SET.  
The minute digits start flashing.
- 
- Press or adjust the minutes, then press PROGRAM/CLOCK SET.

**Notes:**

- If there is a power failure, the clock loses the setting and is reset to "0:00." The clock indication will keep flashing until you set the clock again.
- You can also set the clock when the unit is in STANDBY mode. In this case, follow the procedures from step 2.

**To show the clock when CD or tuner is selected.**

Press DISPLAY.

Each time you press the button, the display changes the clock indication and the normal indication alternately. (Operating the unit while clock indication is displayed changes the display to the normal indication.)

**ADJUSTING THE SOUND**

Turn the VOLUME knob (or press VOLUME + / - button on the remote control unit) to increase or decrease the volume to desired level. The volume level can be adjusted in 31 steps from "00" to "30".

**Turning off the sound temporarily**

During playback, press MUTING to turn the sound off. The MUTING indicator appears in the display window. Press it again to restore the sound.

**Reinforcing the bass sound**

Press and hold HBS/PRESET EQ so that the HBS indicator appears in the display window. You can enjoy powerful bass sound with the Hyper-Bass Sound effect.

**Selecting the sound mode**

You can select one of the 5 preset sound modes. Press HBS/PRESET EQ repeatedly until the indicator for the sound mode you want appears in the display window.

**CLASSIC:** Enriched sound with fine treble and ample bass.

**ROCK :** Powerful sound emphasizing treble and bass.

**POP :** More presence in the vocals and midrange.

**JAZZ :** Accented lower frequencies for jazz-type music.

**FLAT :** Equalizer effect is canceled.

**USING THE RADIO****TUNING IN RADIO STATIONS**

- Press TUNER/BAND to enter the tuner mode.
- Press TUNER/BAND to select the band, FM or AM.
- Press and hold or for more than 1 second.  
The unit starts searching and stops when a station of sufficient signal strength is tuned in. If you press or briefly and repeatedly, the frequency changes step by step.

**Changing the FM reception mode**

When an FM stereo broadcast is hard to receive or noisy, press FM MODE so that the MONO indicator appears in the display window.

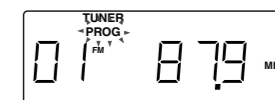
To restore the stereo effect, press FM MODE again so that the MONO indicator goes off. The MONO will be cancelled also when changing the station.

**PRESETTING STATIONS**

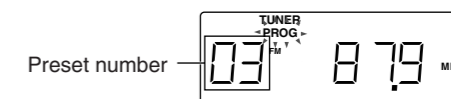
You can preset 10 FM and 10 AM stations.

- Press TUNER/BAND to select the band, FM or AM.
- Press or to tune in the station you want to preset.
- Press PROGRAM/CLOCK SET.

The PROG indicator starts blinking in the display window.



- Press PRESET + /CD REPEAT or PRESET - to select the preset number while the PROG indicator is blinking.



- Press PROGRAM/CLOCK SET while the PROG indicator is blinking.

The tuned station in step 2 is stored in the preset number selected in step 4. Storing a new station on a used number erases the previously stored one.

- Repeat steps 2 to 5 to preset other stations, using different preset numbers.

**Tuning in a preset station**

- Press TUNER/BAND to select the band, FM or AM.
- Press PRESET + /CD REPEAT or PRESET - repeatedly until the desired preset number appears.

**Notes:**

- In some cases, test frequencies have been already memorized for the tuner since the factory examined the tuner preset function before shipment. This is not a malfunction. You can preset the stations you want into memory by following the presetting method.
- If you unplug the AC power cord or if a power failure occurs, the preset stations will be erased in a few days. If this happens, preset the stations again.

