

PORTABLE
MEDIA PLAYER

VP 6200/30GB

ENGLISH

GRUNDIG

About the Portable Multimedia Player

- 1.** VP 6200/30GB is a portable multimedia player with the features to record, play and store varieties of animation/audio/image files.
- 2.** VP 6200/30GB is provided with the encoding function in order to store and play signals directly received from external audio devices such as voice recorder and CD player and video devices such as TV through the LINE IN port in digital data format.
- 3.** VP 6200/30GB has a built-in camera to take images and animations.
- 4.** VP 6200/30GB has a built-in FM radio to record FM signals in MP3 file.

SAFETY CONCERNS

For product safety and correct operation, the following information must be given to the operator/user and shall be read before the installation and operation.

Conventions



WARNING

Provides instructions that the reader should follow in order to avoid personal injury or fatality.



CAUTION

Provides instructions that you should follow in order to avoid a service failure or damage to your PMP.



NOTE

Indicates additional information as a reference.



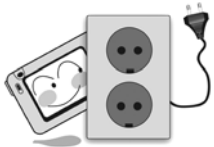
CAUTION

Precautions associated with power



Do not touch the adaptor with wet hands.

- This might be a reason of electric shock.



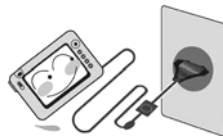
Make sure to insert the adaptor into electrical receptacles with ground ports.

- This might be a reason of electric shock.



Use only the specified adaptor.

- Using a different type of adaptor may damage the product.



Make sure to insert the plug tightly.

- This might be a reason of fire.

Precautions when using the product



Do not listen to the music for a long time with a large volume.

- This might damage your hearing ability.



Do not use the head set/ear phone while driving or walking.

- This might be a reason of an accident.



Do not exert impact on LCD panel and camera lens.

- This might be a reason of product trouble.



In case the product is smoking or deformed by heat, stop using the product and contact the Call Center.

- Using the product continually may damage the product or be a reason of fire.

Precautions associated with the product



Do not leave the product under too hot (over 35 °C) or too cold (below -5 °C) environment.

- This might be a reason of product trouble.



Do not leave the product under direct sunlight or in a closed car.

- This might be a reason of product trouble.



Do not leave the product in a dusty place, bathroom and wet place.

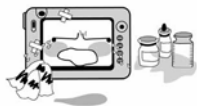
- This might be a reason of product trouble.



Do not place the product near cash cards, prepaid cards, etc.

- The magnetic part of cash card, prepaid cards and others might be damaged and become useless.

Other precautions



Clean the product with soft and dry cloth and do not use benzene or thinner.

- This might be a reason of product trouble.



Do not repair, disassemble or revise the product at random.

- This might be a reason of product trouble. In such a case, the company is not responsible for product trouble



Take care not to introduce dirt or fluids into the product and camera lens.

- This might be a reason of product trouble. In such as case, stop using the product and contact the Call Center.



Take care not to drop the product.

- This might damage the product.

TABLE OF CONTENTS

SAFETY CONCERNS	3
<hr/>	
Conventions	3
Caution	4
TABLE OF CONTENTS	8
Introduction	12
<hr/>	
Features of the product	12
Package	15
Mechanical Features	16
Battery Charging	17
Connection	18
USB Driver Installation (In case of Windows98)	23
Automatic Installation.....	23
Manual Installation of Windows 98 driver	25
Connecting To a Computer	31

Isolate from PC	33
LCD Panel	34
Main Menu Screen	34
File Search Screen	36
Video Record/Play Screen	37
Image Record/Play Screen	39
Audio Record/Play Screen	41
FM Radio Receive/Record Screen	43
Text View/Play Screen	44
Power On/Off	45
Menu Selection	47
ESC Button Functions	49
Video Functions	50
<hr/>	
Play Video	50
Record Video	57
Image Functions	62
<hr/>	
Play Image	62
Record Image	68

Audio Functions	73
Play Audio	73
Record Audio	79
FM Radio Functions	82
Receive FM Radio	82
Record FM Radio	87
Text View Functions	90
Text View	90
Special Functions(Common to Video/Audio)	97
Bookmark	97
Favorite	100
Section Repeat	101
Setting Function	103
System Set	103
Time Set	105

Change Background Image	107
How to use LyricsED	108
Upgrading Firmware	112
Troubleshooting	113
Specifications	116
<hr/>	
Environmental note	118

Introduction

Features of the product

Playing MP3 and WMA music files

The product can play high quality digital music files (MP3, WMA).

AVI (XviD, DivX(3.x, 4.x, 5.x), ASF (Recorded File from VP 6200), Video File

It can play various types of high quality animation files.

Digital camera function

It is equipped with a digital camera of 1.3 Million pixels in order to take images or animations.

Receiving and recording FM

You can receive FM radio broadcasting and record it in MP3 file.

Recording voices in high quality MP3 format

The product is provided with MIC to store and play voice signals in high quality MP3 file.

Recording/storing external video or audio input signals in ASF/MP3 files

It stores images of video/audio/TV converted into ASF files or audio signals of CDP/MP3P converted into MP3 files.

Editing lyrics (supports lyrics editing program)

You can display lyrics of audio files on the LCD panel through the words editing program.

Providing 3.5" TFT LCD

The product provides 3.5" TFT LCD to display high quality image and animation frames.

Convenient firmware upgrade

The firmware version can be subjected to different from released date to the market. Please download the latest firmware from GRUNDIG website (Refer to the 112 page).

Utilizing as an external storage device

You can use the product as an external storage device by connecting the player with PC through USB cable.

Fixed bit rate

You can conveniently do voice recording or line in recording depending on circumstances

(Fixed Bit Rate: 128kbps, Sample Rate: 44.1 KHz).

Equipped with lithium polymer battery for charging

You can conveniently charge the battery with the wall outlet power without purchasing a battery additionally.

Providing animation format conversion program

Even for animations that cannot be directly played on the player, you can play them by converting them into the file format using the animation format conversion program.

Image Viewer / Text Viewer

Enjoy the various image files (JPG, GIF, BMP), and Text Viewer for TEXT File (TXT).

Package



VP 6200/30GB



Software
Installation CD



Stereo Earphone



User Guide



Format
conversion CD



USB Cable



Power Adaptor



AV Cable



Hand Strap



Y Cable

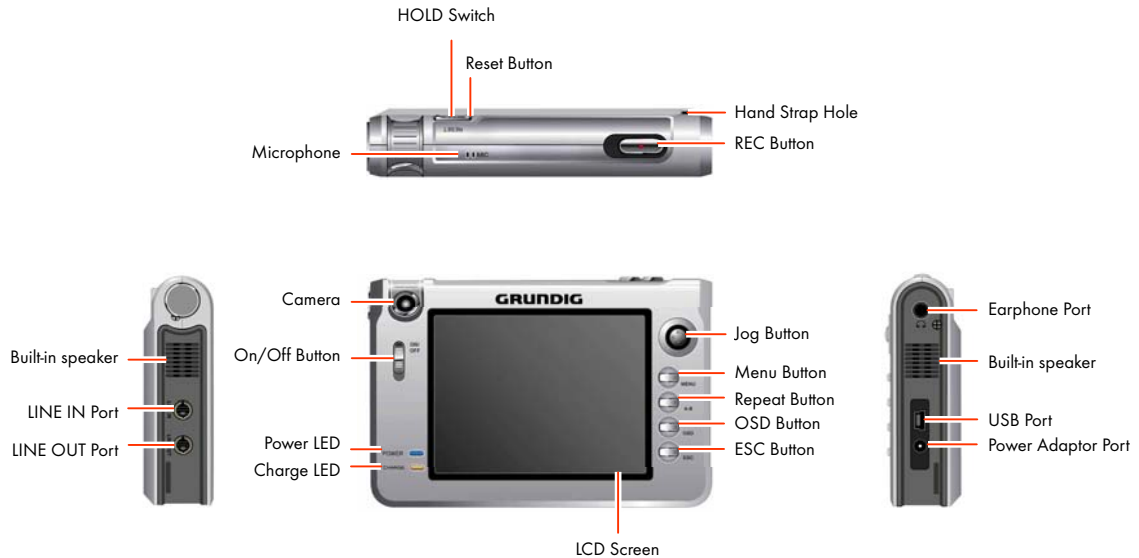


Cradle



Carrying Case

Mechanical Features



Battery Charging

You can charge the battery by connecting the power adaptor to the cradle and placing the body on the cradle or by directly connecting the power adaptor to the adaptor port.

The LED color indicates the charged amount during charging.
(Red-Orange-Green)



The battery will be full charged from entirely discharged stage roughly 5 hours later.

(Red LED: Under charging, Orange LED: 80% charged, Green LED: Completely charged)

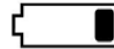
Battery Low Voltage Warning



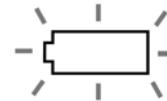
Full charged



A little discharged



Nearly discharged



Completely discharged

Connection

Audio Connection

Connect the Line In port of the body with the external audio device.

Stereo Earphone Connection

Connect the stereo earphone to the earphone port.

TV Connection for Playing

Connect the Line Out port of the body with the TV input port using the AV cable.

TV Connection for Recording

Connect the Line In port of the body with the TV output port using the AV cable.

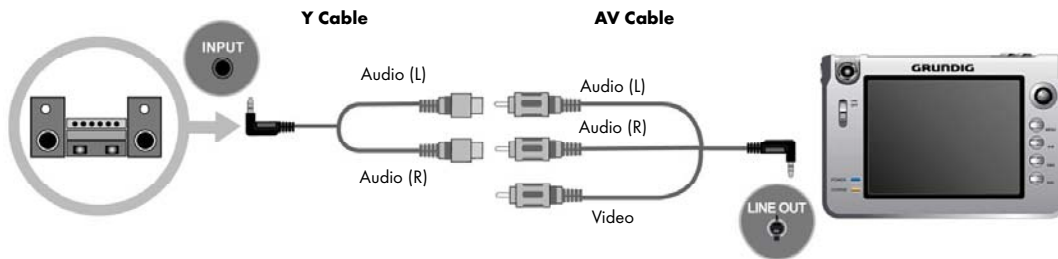
PC Connection

Connect the USB port of the body with that of PC using the USB cable.



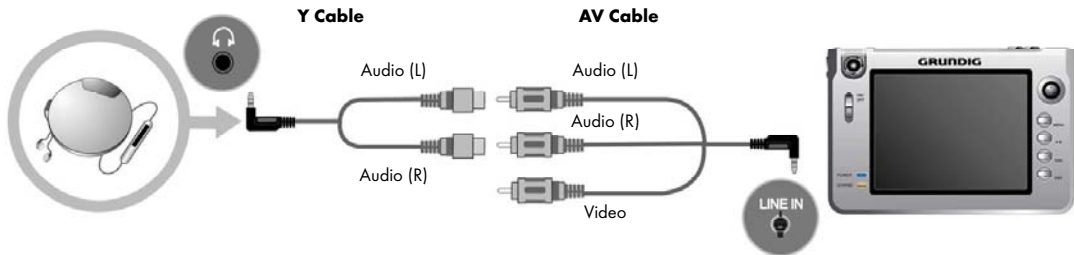
Listening in External Audio devices

Select **[AUDIO PLAY]** after connect the player with external audio device by using Y Cable and AV Cable.



Line In (Recording from External Device)

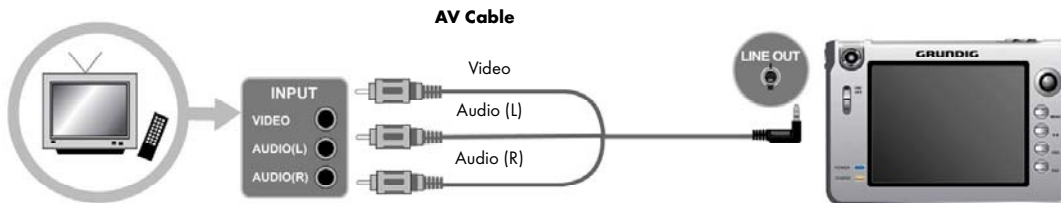
Select **[AUDIO PLAY]** after connect the player with external audio device by using Y Cable and AV Cable. It should be set as 'Line' for 'Audio Input' in 'Audio Recording Setting' (Refer to the Page 72~80).



Please connect the Y cable to AV cable properly. If one of Y cable is connected with AV cable for Video, the sound will be heard from only one side. In that case, please connect the Y cable, which can not be heard, to AV cable properly.

Watching TV

Connect Player to TV by connecting AV cable



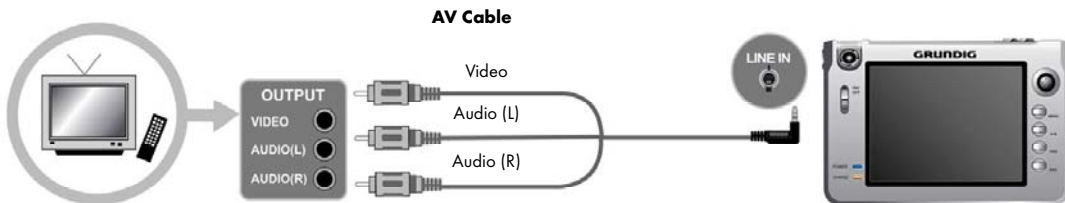
NOTE

- If you want to connect TV to the player and display output of the player on the TV screen, please set 'Screen Output Mode' to 'TV' from the 'SYSTEM SET' menu on the main menu screen. In that case, the LCD panel vibrates, ensuring good quality of the TV screen (This phenomenon is not a product trouble).
- 'TV SYSTEM' in 'SYSTEM SET' should be set properly for user's local TV System as NTSC/PAL (Refer to page 102~103).

TV Recording

Connect the player to TV by using AV cable, and select **[VIDEO RECORD]** or **[IMAGE RECORD]**. It should be set as 'Line' for 'VIDEO INPUT' of **[VIDEO RECORD]** or **[IMAGE RECORD]**

(Refer to page 56~60).



NOTE

The color of Input/Output cable and AV cable are subject to different from manufacturer. In that case, try to connect the video cable alternately until find the video signal, and connect Audio cable.

USB Driver Installation (In case of Windows98)



You need not install the USB driver under other operating systems, but should install it only if the PC OS in use is Windows 98/SE.

Automatic Installation

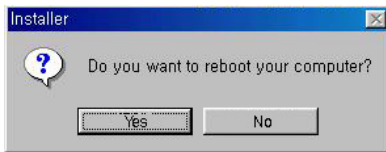
1. Insert the software install CD provided with the product into the CD-ROM drive of PC.
2. Select '**USB Device Driver**' on the software install screen.



3. The following message appears when 'USB Device Driver' is selected. Click the [OK] button.

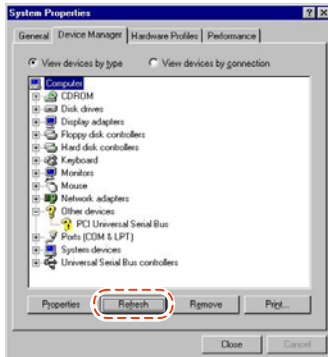


4. Click the [Yes] button and reboot the PC.

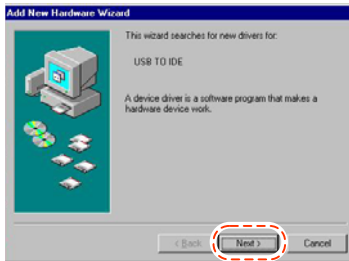


Manual Installation of Windows 98 driver

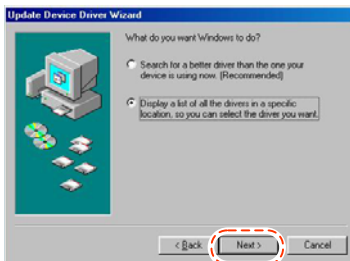
1. Turn on the player power and connect the VP 6200/30 GB player with PC using the USB cable.
2. The following is displayed if you choose **[Control Panel]** → **[System]** on the Windows background window and select the **[Device Manager]** tab. Click **[Refresh]** button.



3. Device driver search appears. Click **[Next>]** button.



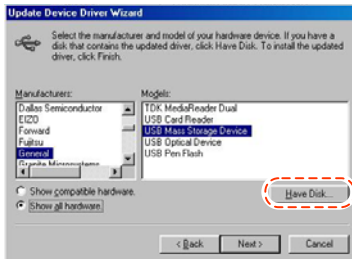
4. Select '**Display a list of all the drivers in a specific location, so you can select the driver you want.**' and click **[Next>]** button.



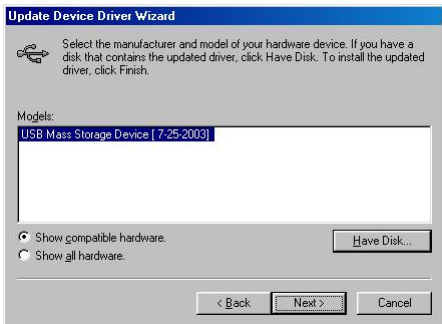
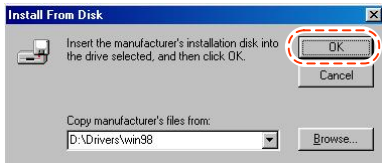
5. Select 'Hard disk controllers' and click [Next>] button.



6. Click [Have Disk...] button.



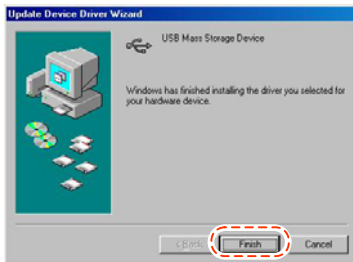
7. Insert the provided CD into the CD-ROM drive. Select **'Win98'** folder and click **[OK]** button.



8. Click **[Next>]** button.

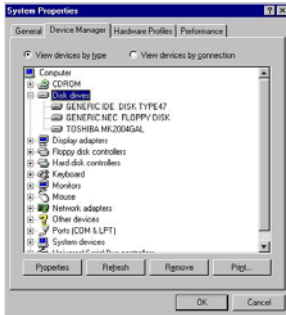


9. When completion screen of USB driver installation is shown, click **[Finish]** button.



Confirmation of USB driver Installation

1. The following is displayed if you choose **[Control Panel]→[System]** on the Windows background window and select the **[Device Manager]** tab.



2. If you select **'disk drive'**, installed USB driver is displayed.



NOTE

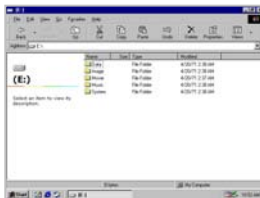
If USB driver is not recognized with the above method, uninstall the USB driver you installed, and install USB driver again.

Connecting To a Computer

Recommended PC Specifications

Part	Specifications
CPU	Pentium MMX or above
OS	Windows 98SE/ME/2000/XP/Mac/Linux
Hard Disk	50 Mbyte or more hard disk storage available
Other	CD-ROM drive, USB port

- The Windows Explorer recognizes the body connected to the PC as a **'PMP'**. There are five folders of 'Music', 'Movie', 'Image', 'Data' and 'System'.
 - 'Music' and 'Movie' folders include 'Bookmark', 'Favorite' and 'Record' folders respectively and 'Image' folder includes 'Record' folder. You can create new folders in 'Music', 'Movie', 'Image' and 'Data' folders





- The player would not work normally if you delete the default folders created under the **'PMP'**. Therefore, do not delete these folders.
 - Please do not format **'HDD'** if possible, but if you have to format please do **'FAT32'** format.
 - The maximum Sub-Folder is up to 16 steps.
 - **'MUSIC'**, **'MOVIE'**, **'IMAGE'**, **'DATA'** can save sub-folder up to 400 folders and 4000 files per each folder.
-

2. Select a file to store in the body from the PC and drag or copy it in the corresponding folder of the **'PMP'**.

- You should each copy in the corresponding folder, depending on file types.
 - Music folder: Audio file
 - Movie folder: Video file
 - Image folder: Image file
 - Data folder: Text file
 - System folder: Firmware file, Background screen file
-



- **Make sure not to disconnect the USB cable during file transmission.**
If the USB cable is separated during file transmission, the file may be damaged.
 - **The order of files appearing in the 'PMP' of Window Explorer does not concern the play order.**
-

Isolate from PC

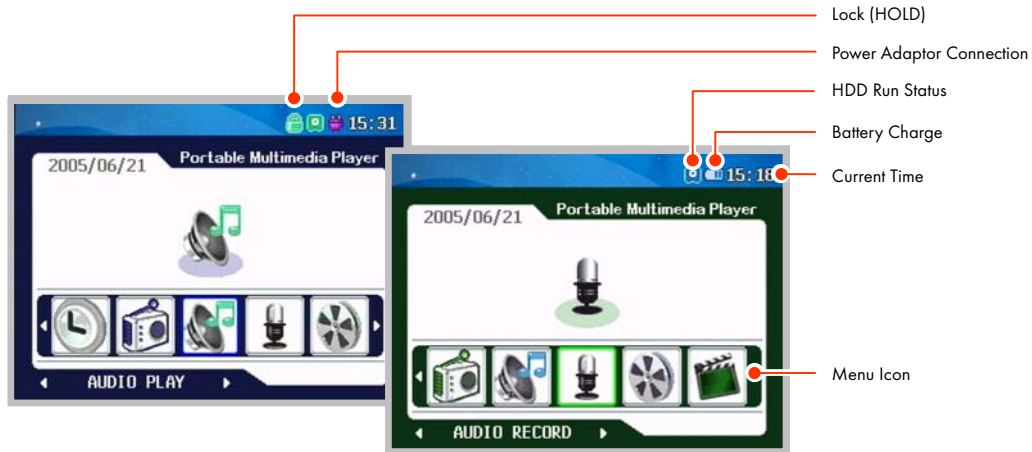
1. Select the portable hardware icon from the task bar on the Windows background screen and click on the right-hand mouse button to choose the '**Safe hardware isolation**'.
2. Select a hardware device to isolate from the PC and click the **[Stop]** button.
3. Click the **[OK]** button to identify the device to stop.
4. Check the '**Safe Hardware Isolation**' indication on the task bar and click the **[Close]** button to finish.



Abnormal isolation of the USB cable from the body might damage the product.





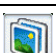





LCD Panel

Main Menu Screen



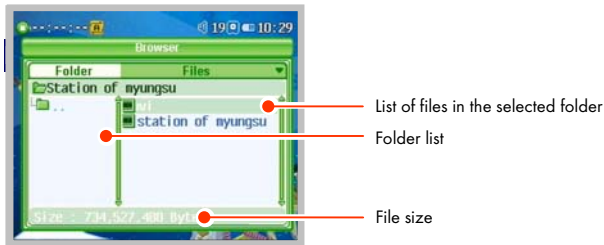
NOTE

Press the **[OSD]** button shortly in the main menu screen, skin color will be changed.

Icon	Menu	Function
	AUDIO PLAY	Play audio (music file).
	VIDEO PLAY	Play video (animation).
	VIDEO RECORD	Record the moving picture signal input from the camera or an external device.
	IMAGE RECORD	Record the image signal input from the camera or an external device.
	IMAGE PLAY	Play images (photo files).
	SYSTEM SET	Set user environment for the player.
	TIME SET	Set a time.
	FM RADIO	Listen to the FM radio or records FM radio signals.
	AUDIO RECORD	Record the audio signal input from the mic or external device.
	TEXT VIEW	To read the text file.

File Search Screen

If you select **[VIDEO PLAY]**, **[AUDIO PLAY]**, **[IMAGE PLAY]** or **[TEXT VIEW]** menus, the screen which allows you to select files to play or to search files to delete for each menu appears.



Push the **jog button** in \wedge or \vee direction to move to the folder in which the file to be played is included. Press the **jog button** to play the file in the selected folder.

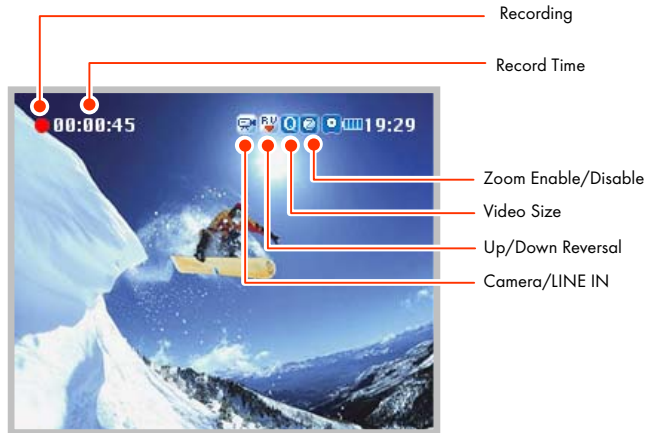
Delete File

Push the **jog button** in \wedge or \vee direction to move to the folder in which the file to be deleted is included and press the **[A-B]** button long. If the 'delete file confirmation message' is displayed, select 'Yes' and press the **jog button**.

Video Record/Play Screen

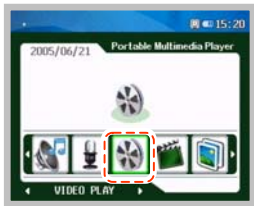
Video Record Screen

Choose the **[VIDEO RECORD]** menu on the main menu screen. The image screen input from the camera or external device is displayed on the LCD panel.



Video Play Screen

Choose the **[VIDEO PLAY]** menu on the main menu screen.



Playing

Play Time

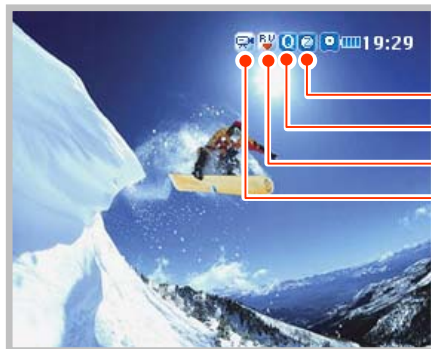
Play Mode

Volume

Image Record/Play Screen

Image Record Screen

Choose the **[IMAGE RECORD]** menu on the main menu screen. The screen input from the camera or external device is displayed on the LCD panel.



Zoom Enable/Disabe

Video Size

Up/Down Reversal

Camera/LINE IN

Image Play Screen

Choose the **[IMAGE PLAY]** menu on the main menu screen.



Playing

Played Files/Total Files

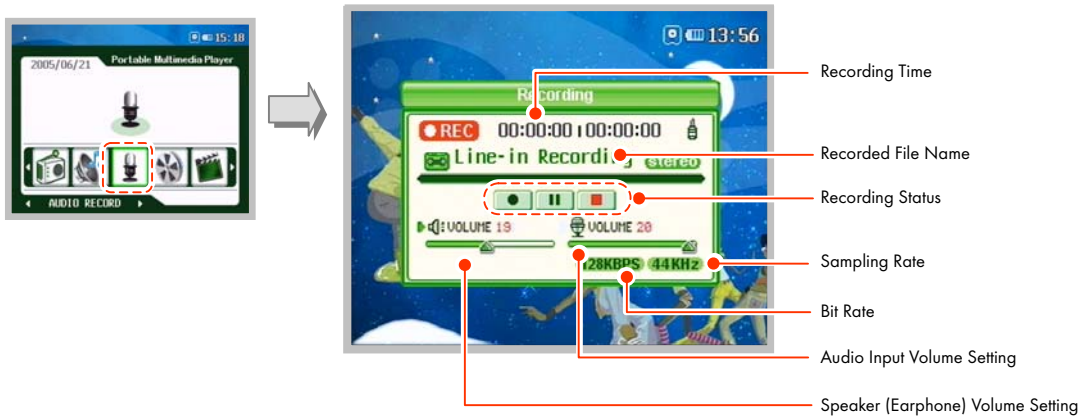
Play Mode

File Size

Audio Record/Play Screen

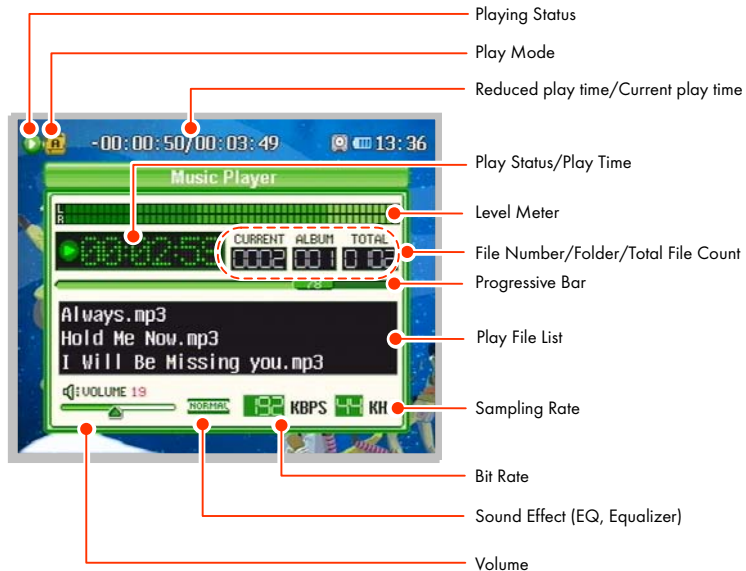
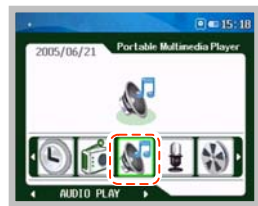
Audio Record Screen

Choose the **[AUDIO RECORD]** menu on the main menu screen.



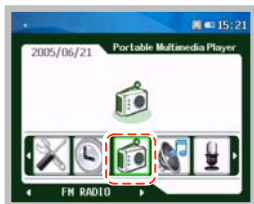
Audio Play Screen

Choose the **[AUDIO PLAY]** menu on the main menu screen.



FM Radio Receive/Record Screen

Choose the **[FM RADIO]** menu on the main menu screen.



Playing

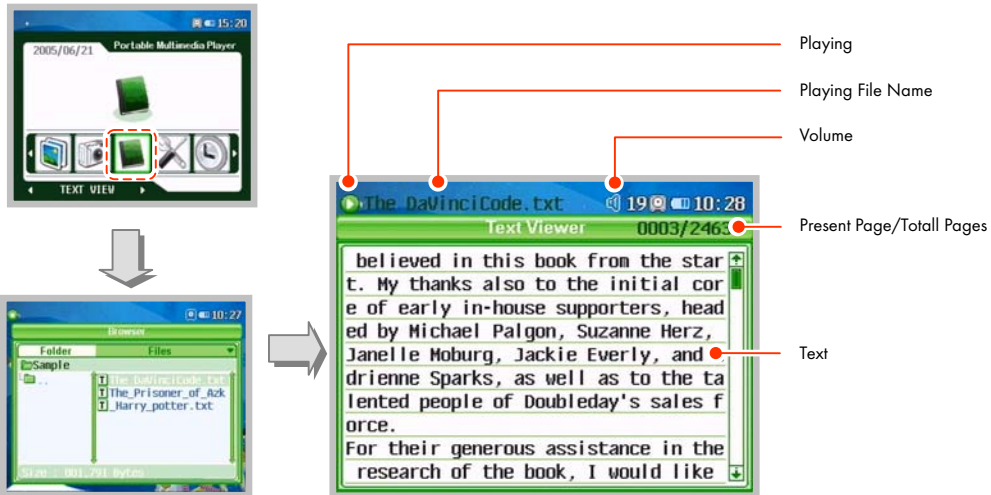
Channel Number

Frequency Setting

Receive Mode

Text View/Play Screen

Choose the [TEXT VIEW] menu on the main menu screen.



Power On/Off

Power On



Push the **[ON/OFF]** button in the arrow direction for about 1~2 sec.

- Power is on with the specified screen displayed on the LCD panel and the main menu screen appears. At this time, the menu selection bar is located on the menu last executed
- For menu non-operation mode such as play, record and record (Ex: main menu setting, file searching, waiting status and others), when no button operation is taken for about 5 minutes, power automatically goes off to minimize power consumption.

Power Off

Push the **[ON/OFF]** button in the arrow direction for about 2 sec.

- Power goes off with 'Power OFF Good Bye' displayed on the LCD panel.

LCD Panel On/Off



If you need not look at the LCD panel in AUDIO Play, FM Radio Receive, TV Output Mode, etc., push the **[ON/OFF]** button **shortly** in the arrow direction to make the LCD panel go off. **Shortly** push the button again to turn on the LCD panel.

- This function is useful for reducing power consumption.

Menu Selection

Selecting menu operation mode

Press the **jog button** in ◀◀ or ▶▶ direction to move to a menu you want. Press the **jog button** to select a desired operation mode.

Press the **[MENU]** button **shortly** on the operation screen to return to the main menu screen.



Menu Selection

If you press the **[MENU]** button **long** on each operation screen, the screen which allows you to set operation mode appears.

Press the **[MENU]** button **shortly** on the menu setting screen to return to the operation screen.



ESC Button Functions

If you push the **jog button** in ◀◀ or ▶▶ direction to move to a wanted menu and press the **jog button**, wanted play mode is selected.

Press the **[ESC]** button **shortly** on the file searching screen or play/record screen, you can return to the main menu screen.

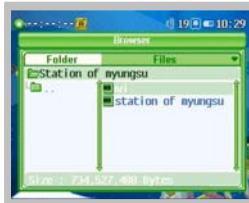


Video Functions

Play Video



1. Push the **jog button** in ◀ or ▶ direction on the main menu screen to move to the **[VIDEO PLAY]** menu and press the **jog button**.



2. When the video file search screen is displayed, push the **jog button** in ^ or v direction to move to a file that you want to play and press the **jog button** to play the selected file.
 - You can move between folders or file list of the selected folder by pushing the **jog button** in ◀ or ▶ direction.
 - If you push the **jog button** in ^ or v direction to move to a certain folder and press the **jog button**, the files of the selected folder are displayed.



3. If you press the **jog button** in ◀◀ or ▶▶ direction during playing, you can move to the previous file/next file.

- You can move to the previous file by pushing it in ◀◀ direction before 5 sec after starting playing and to the beginning of the file being played by pushing it 5 sec later.



4. You can search the file being played by pushing the **jog button** long in ◀◀ or ▶▶ direction.



5. You can hide the icons and captions displayed on the screen by pressing the **[OSD]** button **shortly** during playing.

- Whenever you press the **[OSD]** button, the status changes in the order of 'Hide icon→Hide icon/caption→Show icon/caption(initial status)'.



6. If you press the **[OSD]** button **long** during playing, you can see the file information on the screen and then, press the **[OSD]** button **long** again, the file information will be concealed.

7. If you want to display the file searching screen during playing a video file, press the **[MENU]** button **shortly**. The video play screen appears when you shortly press the **[MENU]** button again.

- The file searching screen is displayed semi-transparently while playing a video file.

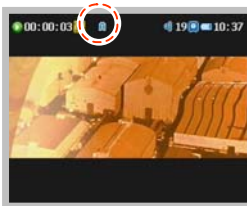
8. Press the **jog button shortly** if you want to stop playing the video file and press it long to finish playing.

- The video file searching screen appears when you finish playing the video file.

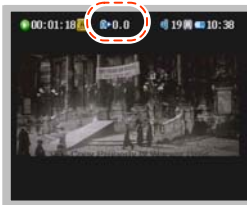


9. If you want to exit the video play menu and return to the main menu screen, press the **[MENU]** button **shortly** on the video file searching screen after playing is completed.

SYNC Mode Setting



1. The icon "A" will be displayed when this file included sub title, and the icon "A" will be disappeared after 10 seconds.
 - When Using The subtitle, the file name of subtitle file should be the same as you wanted animation movie file's name and in the same folder



2. Press the **[REC]** button for a while to change to the sync mode what the time for the subtitle is not correct.
 - The "A+0.0" will be displayed when it is changed to Sync mode. The displayed number indicate the time by second.



- 3.** To setting the displayed sync time, move the jog button to the direction of ◀◀ or ▶▶. It will be moved by 0.5seconds.



- 4.** Press the **[REC]** button to finish sync mode.

Video Play Setting



1. If you press the **[MENU]** button **long** on the file searching screen or during playing a video file, the video play setting screen appears and you can set video play environment.
 - Set transparency of the setting menu screen from 'Half Tone' of the 'General' item of 'SYSTEM SET' menu on the main menu screen.



2. Push the **jog button** in \wedge or \vee direction to select an item to set and push it in \ll or \gg direction to set the selected item.



3. Press the **[MENU]** button **shortly** to exit the video play setting screen.

Class	Item	Description
General	Language	Selects a caption language for video play file (English and 34 languages)
	Resume	Sets playing from the point where the file played last stopped (On/Off)
	Full Screen	Sets to the displayed screen in full screen (Off/4:3/16:9)
Mode	Scope	Sets video file play range - All: Repeatedly plays all video files in the folders under the 'Movie' folder - Dir: Repeatedly plays all video files in the folder which includes the selected video file - 1: Repeatedly plays just one video file selected
	Repeat	Sets repeated playing (On/Off)
	Shift Time (Min)	Sets a shift time for the file being played (0~10)



NOTE

Power/screen setting (equally applies to video play/audio play/image play/text viewer menu)

The power/screen item on the setting screen of video play, audio play, image play and text viewer menus equally applies to the setting from the 'SYSTEM SET' menu on the main menu screen. See 'System Set' of the User Guide for further information on power/screen setting (Refer to the 102~103 page)

Record Video



1. Push the **jog button** in ◀◀ or ▶▶ direction on the main menu screen to move to the **[VIDEO RECORD]** menu and press the **jog button**.
2. If the image screen input to the camera is displayed on the LCD panel, rotate the camera lens to the object to record to take a comfortable pause.
3. You can change up/down reversal by pressing the **jog button**.
 - The image on the LCD panel may be seen reversed depending on direction of the lens and objects. In that case, you can get normal image by pressing the **jog button**.



4. You can produce various screen effects by pushing the **jog button** in ◀◀ or ▶▶ direction.

- Image effect types:
No Effect, Monochrome, Sepia Blue/Red/Green/Magenta, Negative, Solarize 1/2



5. Press the **[REC]** button **shortly** to start video recording.



6. It can be zoom out or zoom in by moving the **Jog button** to ▲ or ▼ in QVGA or VGA mode (Zoom function won't be work in Line In Mode).

- If you select QVGA or VGA mode, the QVGA or VGA mode icon and the zoom -/+ icon are displayed on the video record screen (VGA: Enlarging 2X possible, QVGA: Enlarging 4X Possible).
- You can change QVGA or VGA mode from the 'Camera Size' item on the video record setting menu screen.



7. Press the **[REC]** button **long** to finish recording.

- Press the **[REC]** button **shortly** to stop video recording and press it again to resume recording.



8. If you want to exit the video record menu and return to the main menu screen, press the **[MENU]** button **shortly** after recording is completed.

- The recorded file is stored in 'Record' folder of 'Video' folder.



NOTE

Recorded file format indicates the record time and date.

- L041212_162030.ASF: Line input animation record file
- C041212_162030.ASF: Camera input animation record file

Video Record Setting



1. If you press the **[MENU]** button **long** in record end/wait mode of the video record menu, the video record setting screen appears and you can set video record environment.
 - Set transparency of the setting menu screen from 'Half Tone' of the 'General' item of 'SYSTEM SET' menu on the main menu screen.

2. Push the **jog button** in \wedge or \vee direction to select an item to set and push it in \ll or \gg direction to set the selected item.

3. Press the **[MENU]** button **shortly** to exit the video record setting screen.

Class	Item	Description
General	Video In	Selects image input for video recording (Camera/Line)
	Flickerless	Removes up/down flow of flicker/horizontal line noise - Auto: Outdoor or normal setting - 50Hz: Indoor, AC power frequency 50Hz - 60Hz: Indoor, AC power frequency 60Hz
	Camera Size	Selects image quality of camera input (VGA (640×320): 15frame/sec, QVGA (320×240): 30frame/sec)
	Line-in Size	Selects image quality of line input (VGA/QVGA)
	REC Time(Min)	Sets video record time (0~150) A file will be recorded up to 1GB. If the capacity is over 1 GB a new file will be created after stopping automatically



NOTE

Recording mode depending on image quality

- VGA mode: VGA mode is used to record high quality images. However, is the image is recorded with 15frames/sec, the screen seems to be a little discontinued and a large storage space is required as the file size of the recorded screen is large.
- QVGA mode: Image quality of QVGA mode is a little lower than that of VGA mode. However, it can present natural screen actions and requires smaller storage space than VGA mode.

Image Functions

Play Image



1. Push the **jog button** in **◀** or **▶** direction on the main menu screen to move to the **[IMAGE PLAY]** menu and press the **jog button**.
2. When the image file searching screen is displayed, press the **jog button** in **^** or **v** direction to move to a file you want to play and press the **jog button** to play the selected file.
 - You can move between folders or file list of the selected folder by pushing the **jog button** in **◀** or **▶** direction.
 - If you push the **jog button** in **^** or **v** direction to move to a certain folder and press the **jog button**, the files of the selected folder are displayed.



3. You can zoom a desired part by pressing the **[A-B]** button during playing.

- Whenever you press the **[A-B]** button, zoom changes in the order of 'Normal→2x→4x→Normal'.
- You can move the zoom part by pushing the **jog button** in \wedge , \vee , \ll , \gg directions.



4. You can move to the previous image/next image by pressing the **jog button** in \ll or \gg direction.

- Once the image is enlarged, you cannot move to the previous/next image.
- If a slide time is set, the next image is automatically played after the specified time.
- You can set a slide time on the 'image play setting' menu screen.



5. You can hide the icons displayed on the play screen by pressing the **[OSD]** button **shortly** during playing.

- Press once: Hide icons
- Press again: Display icons



6. If you press the **[OSD]** button **long** during playing, you can see the file information on the screen and then, press the **[OSD]** button **long** again, the file information will be concealed.



7. Press the **[MENU]** button **shortly** if you want to display the file searching screen while playing an image file. The image play screen is displayed when you **shortly** press the **[MENU]** button again.

- The file searching screen is displayed semi-transparently while playing an image file.



8. After selecting image during playing image file, press the **[REC]** button **shortly**, it will be setting.



9. If you want to exit the image play menu and return to the main menu screen, press the **[MENU]** button **shortly** on the image file searching screen after playing is completed.

Image Play Setting



1. If you press the **[MENU]** button **long** on the file search screen or during playing image file, the image play setting screen appears and you can set image play environment.
 - Set transparency of the setting menu screen from 'Half Tone' of the 'General' item of 'SYSTEM SET' menu on the main menu screen.
2. Push the **jog button** in \wedge or \vee direction to select an item to set and push it in \llcorner or \lrcorner direction to set the selected item.
3. Press the **[MENU]** button **shortly** to exit the image play setting screen.

Class	Item	Description
General	Resume	Sets playing from the file played last (On/Off)
Mode	Scope	Sets image file play range - All: Repeatedly plays all image files in the folders under the 'Image' folder - Dir: Repeatedly plays all image files in the folder which includes the selected image file - 1: Repeatedly plays just one image file selected
	Repeat	Sets repeated play (On/Off)
	Shuffle	Sets shuffle play (On/Off)
	Effect	Selects play slide effect (Normal/L→R/R→L/T→B/B→T/Random)
	Rotate	Sets image file rotation (0°/90°/180°/270°/Auto) * Press the [A-B] button long during playing, image will be rotated as direction of reverse of time direction.
	Slide Time (Sec)	Selects automatic play side time (0~5)

Record Image



1. Push the **jog button** in ◀◀ or ▶▶ direction on the main menu screen to move to the **[IMAGE RECORD]** menu and press the **jog button**.
2. If the image screen input to the camera is displayed on the LCD panel, rotate the camera lens to the object to record to take a comfortable pose.
3. You can reverse the screen by pressing the **jog button**.
 - The image on the LCD panel may be seen reversed depending on direction of the lens and objects. In that case, you can get normal image by pressing the **jog button**.



4. You can produce various screen effects by pushing the **jog button** in ◀◀ or ▶▶ direction.

- Recording effect types:
No Effect, Monochrome, Sepia Blue/Red/Green/Magenta, Negative, Solarize 1/2



5. Press the **[REC]** button to start image recording.

- To record image from an external video device, connect the output of the external video device to the LINE IN jack of the player, and select 'Line' for image input. If you press the **[REC]** button, the player starts saving the image from the external video device.



6. You can enlarge or reduce the screen size with the zoom function by pushing the **jog button** in \wedge or \vee direction in QVGA mode (Zoom function won't be work in Line-In Mode).

- If you select QVGA or VGA mode, the QVGA or VGA mode icon and the zoom -/+ icon are displayed on the image record screen (VGA: Enlarging 2X possible, QVGA: Enlarging 4X Possible).
- You can change QVGA or VGA mode from the 'Camera Size' item on the image record setting menu screen.
- The zoom function is not available in SXGA mode.



7. Press the **[MENU]** button **shortly** to exit the image record menu and return to the main menu screen.

- The image record file is created in the 'Record' folder of 'Image' folder.



Recorded file format indicates the record time and date.

- L041212_162030.JPG: Line input animation record file
 - C041212_162030.JPG: Camera input animation record file
-

Image Record Setting



1. Press the **[MENU]** button **long** from the image record menu. The image record setting screen appears and you can set image record environment.
 - Set transparency of the setting menu screen from 'Half Tone' of the 'General' 'item of 'SYSTEM SET' menu on the main menu screen.
2. Push the **jog button** in \wedge or \vee direction to select an item to set and push it in \ll or \gg direction to set the selected item.
3. Press the **[MENU]** button **shortly** to exit the image record setting screen.

Class	Item	Description
General	Video In	Selects record image input (Camera/Line)
	Flickerless	Removes up/down flow of flicker/horizontal line noise - Auto: Outdoor or normal setting - 50Hz: Indoor, AC power frequency 50Hz - 60Hz: Indoor, AC power frequency 60Hz
	Camera Size	Selects camera input image quality - SXGA (1280×1024) - VGA (640×480) - QVGA (320×240)
	Line-in Size	Selects line input image quality - QVGA (320×240) - VGA (640×480)
	Count	When recording image, can takes a many of images by one time click (1 ~ 10). When recording image, press the [REC] button long .
	Interval (sec)	When recording image, takes image continuously as adjusted time interval range (1 ~ 5).

Audio Functions

Play Audio



1. Push the **jog button** in ◀ or ▶ direction on the main menu screen to move to the **[AUDIO PLAY]** menu and press the **jog button**.
2. When the audio file search screen is displayed, push the **jog button** in ^ or v direction to move to a file that you want to play and press the **jog button** to play the selected file.
 - You can move between folders or file list of the selected folder by pushing the **jog button** in ◀ or ▶ direction.
 - If you push the **jog button** in ^ or v direction to move to a certain folder and press the **jog button**, the files of the selected folder are displayed.



3. Pressing the **[OSD]** button **shortly** during playing, you can change the play screen from normal status to 'Semi-transparent'→No display (Display just background screen)→Normal'.



4. You can change the EQ status by pressing the **[OSD]** button **long** during playing.
- You can change the EQ status to 'NORMAL/ROCK/JAZZ/CLASSIC/POP/U.BASS/U.EQ'.



5. You can move to the previous song/next song by pushing the **jog button** in ◀◀ or ▶▶ direction.
- You can move to the previous song by pushing it in ◀◀ direction before 5 sec after starting playing and to the beginning of the song being played by pushing it 5 sec later.



6. You can search the file being played by pushing the **jog button long** in ◀◀ or ▶▶ direction.



7. Press the **jog button shortly** if you want to stop playing the audio file and press it long to finish playing.
- The audio file searching screen appears when you finish playing the audio file.



8. If you want to exit the audio play menu, press the **[MENU]** button **shortly** on the audio file searching screen after playing is complete.

Audio Play Setting



1. If you press the **[MENU]** button **long** on the file searching screen or during playing an audio file, the audio play setting screen appears and you can set audio play environment.
 - Set transparency of the setting menu screen from 'Half Tone' of the 'General' item from the 'SYSTEM SET' menu on the main menu screen.



2. Push the **jog button** in \wedge or \vee direction to select an item to set and push it in \ll or \gg direction to set the selected item.



3. Press the **[MENU]** button **shortly** to exit the audio play setting screen.

Class	Item	Description
General	Language	Selects a voice language for audio play file (English and 34 languages)
	Resume	User can play the file which user stopped to see last time (On/Off)
Mode	Scope	<p>Sets audio file play range</p> <ul style="list-style-type: none"> - All: Repeatedly plays all audio files in the folders under the 'Music' folder - Dir: Repeatedly plays all audio files in the folder which includes the selected audio file - 1: Repeatedly plays just one audio file selected
	Repeat	Sets repeated play (On/Off)
	Shuffle	Sets shuttle play (On/Off)
	Id3, Lyric	<p>Sets Id3 tag information or words view of the play file</p> <ul style="list-style-type: none"> - ID3 Tag: Shows Id3 tag information included in the file instead of file name - Lyrics: Shows words included in the file (Shows just the file name if words are not given) - Normal: Play file name
	Shift Time (Sec)	Sets shift time of the file being played (0~10)

Class	Item	Description
Sound EQ	EQ	Sets tone of the audio file output sound being played (Normal/Rock/Jazz/Classic/Pop/U.B/USER_EQ) * Press the [OSD] button long to adjust the sound during playing
User EQ	60Hz/250Hz/ 1KHz/4KHz/ 12KHz	Sets the tone requested by user from low-pitched tone to high-pitched tone (-12~+12)

Record Audio



1. Push the **jog button** in ◀◀ or ▶▶ direction on the main menu screen to move to the **[AUDIO RECORD]** menu and press the **jog button**.
2. Recording starts when you press the **[REC]** button.
 - Change voice input mode from the 'Audio Input' item on the audio record setting menu screen (MIC/Line).
 - To record audio signal from the external audio devices such as CD player, connect the Y cable to the output jack of the external audio device and the AV cable to the LINE IN jack of the player. The Y cable and the AV cable should be connected to the matching colors (L/R). Select 'Line' for the audio input mode.
3. Press the **[REC]** button **shortly** to stop recording and press it again to resume recording.
 - You can set speaker (earphone) volume and audio input volume only if the audio input is set to 'Line'.



- 4.** Press the **[REC]** button **long** to finish recording.
- The recorded file is stored in the 'Record' folder of 'Music' folder.



- 5.** Press the **[MENU]** button **shortly** to exit the audio record menu and return to the main menu screen.



Recorded file format indicates the record time and date.

- L041212_162030.MP3: Line input audio record file
 - C041212_162030.MP3: Microphone input audio record file
-

Audio Record Setting



1. If you press the **[MENU]** button **long** in record end/wait mode of the audio record menu, the audio record setting screen appears and you can set audio record environment.
 - Set transparency of the setting menu screen from 'Half Tone' of the 'General' item of 'SYSTEM SET' menu on the main menu screen.
2. Push the **jog button** in \wedge or \vee direction to select an item to set and push it in \ll or \gg direction to set the selected item.
 - Audio Input: Voice input selection for audio recording (MIC/Line)
 - REC Time (Min): Audio record time setting (0~150)
 - * **A file will be recorded up to 1 GB. If the capacity is over 1 GB a new file will be created after stopping automatically.**
3. Press the **[MENU]** button **shortly** to exit the audio record setting screen.

FM Radio Functions

Receive FM Radio



As the earphone plays the role of an FM radio antenna, make sure to connect the earphone to the earphone port of the body to listen to the FM radio.



1. Push the **jog button** in ◀ or ▶ direction on the main menu screen to move to the **[FM RADIO]** menu and press the **jog button**.
2. Push the **jog button** in ◀ or ▶ direction to search a channel you want.



3. You can hide the icons displayed on the screen and the receive screen by pressing the **[OSD]** button **shortly** while listening to the radio.

- Whenever you press the **[OSD]** button, the status changes in the order of 'Hide icon/semi-transparent screen → Hide receive screen (Display only background screen) → Show icon/receive screen (normal status)'.

Autoscan Memory Searching Mode



If you press the **jog button long**, audible frequencies are automatically searched and stored.

Autoscan Searching Mode



If you press the **jog button** in ◀◀ or ▶▶ direction **long**, the frequency automatically increases or decreases to search available frequency channels (Ex: 89.1MHz→91.9MHz).

- Frequency searching stops when you press the **jog button** shortly during Autoscan searching.

Manual Searching Mode



You can directly search audible channels by **shortly** pressing the **jog button** in ◀◀ or ▶▶ direction (Ex:91.8MHz→91.9MHz).

Preset Mode



1. Press the **[OSD]** button **long** to change to preset mode.

- The 'preset' mode on the screen is selected.



2. Press the **jog button** in **◀** or **▶** direction to search preset channels by increasing channel number
(93.1MHz→95.9MHz→97.3MHz).

- Press the **[OSD]** button **long** to release the preset mode.

Saving broadcasting channel



1. Press the **[A-B]** button **shortly** while listening to the radio.



2. Channel number is displayed on the LCD panel and current frequency being received is stored.

Deleting broadcasting channel



Press the **[A-B]** button **long** while receiving a stored frequency.

- The channel number displayed on the LCD panel is cleared and the stored frequency being received is deleted.

Record FM Radio



1. Recording starts when pressing the **[REC]** button while listening to the FM radio.
2. Press the **[REC]** button **shortly** to stop recording temporarily and press it again to resume recording.
 - The LCD panel shows the record time during recording. When the record time exceeds the memory capacity, recording automatically stops and only the data recorded by allowed record time is stored.
3. Press the **[REC]** button **long** to finish recording.
 - The record file is stored in the format of 'R041201_161020.MP3' in the 'Record' folder of 'Music' folder.



FM Radio Setting



4. Press the **[MENU]** button **shortly** to exit the FM Radio menu and return to the main menu screen while listening to the FM radio.

1. If you press the **[MENU]** button **long** from the FM radio menu, the FM radio setting screen is displayed and you can listen to the FM radio or set recording environment.

2. Push the **jog button** in \wedge or \vee direction to select an item to set and push it in \ll or \gg direction to set the selected item.



3. Press the **[MENU]** button **shortly** to exit the FM radio setting screen.

Class	Item	Description
General	FM Region	Selects FM radio receive region (KOR/USA, Europe, JPN) If you change the FM region, you should execute the FM RADIO menu again.
	Speaker	Sets speaker output - On: Concurrent output to the built-in speaker and the earphone - Off: Output to the earphone only
	REC Time (Min)	Sets FM radio recording time (0~90) A file will be recorded up to 1 GB. If the capacity is over 1 GB a new file will be created after stopping automatically.



NOTE

Do not pull out the earphone even when you select the speaker mode.

Even you set output to the built-in speaker, you should connect the earphone to the earphone port of the body as it plays the role of an FM radio antenna. Otherwise, there may be troubles when listening to the FM radio.

Text View Functions

Text View

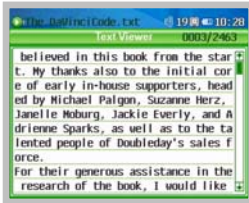


1. Push the **jog button** in ◀ or ▶ direction on the main menu screen to move to the **[TEXT VIEW]** menu and press the **jog button**.
2. When the text file search screen is displayed, push the **jog button** in ^ or v direction to move to a file that user want to play and press the **jog button** to play the selected file.
 - You can move between folders or file list of the selected folder by pushing the jog button in ◀ or ▶ direction.
 - If you push the jog button in ^ or v direction to move to a certain folder and press the jog button, the files of the selected folder are displayed.



3. User can move to the previous page/next page by pushing the **jog button** in ◀◀ or ▶▶ direction.

- You can move to the previous song by pushing it in ◀◀ direction before 5 sec after starting playing and to the beginning of the song being played by pushing it 5 sec later.



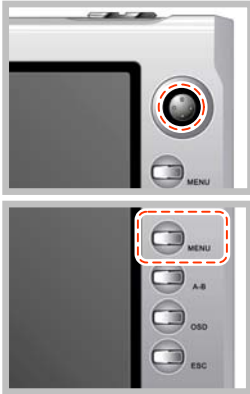
4. User can search the file quickly by pushing the **jog button long** in ◀◀ or ▶▶ direction.

- Time Setting for Automatic Turn the Pages will turn the pages easily.
- Set up the Speed for Automatic Turn the Pages at 'Text View Setting' (Please refer to page 89).



5. Press the **[MENU]** button **shortly** during seeing the text, the browser screen will be shown. And the browser will be disappeared when press the **[MENU]** button **shortly** again

- The browser will be shown as semitransparent during text viewing



6. Press the **jog button** for a while to finish the viewing of present file.
 - Browser of Text file will be displayed after finished to text viewing.

7. Press the **[MENU]** button to return the main menu at the text file browser after finishing text viewer function.



NOTE

The Maximum capacity of text file is 2MB.

Playing Audio during text view



1. To playing Audio file, press the **[OSD]** button **shortly** during seeing the text view. And press the **[OSD]** button **shortly** again, Playing Audio file is stopped.

- Push the **jog button** or direction to adjust volume during playing.
- Pressing the **[OSD]** button during stop status, next music will be playing.



2. To pause during playing, you can press the **[A-B]** button **shortly**.



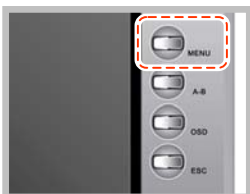
NOTE

To playing audio file in the text view, audio file should be registered in the favorite folder (Refer to the 99 page).

Receive FM Radio during Text view



1. Press the **[OSD]** button **long** during text view, you can move FM radio screen,
 - Select you wanted FM Radio channel (Refer to the 81 ~88).

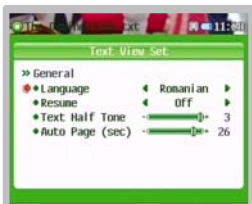


2. Press the **[MENU]** button **shortly**, you can return text view screen.



3. Press the **[OSD]** button **long**, you can stop finishing FM radio receive.

Text View Setting



1. Press the **[MENU]** button for a while at the File Browser, and the text view setting screen is come out as left picture
 - The Transparence of menu screen is controlled at 'SYSTEM SET' in Main Menu as below.
2. Select the specification as you want by moving the **jog button** to \wedge or \vee direction, and set up with selected specification by using the **jog button** \ll or \gg direction.
3. Press the **[MENU]** button **shortly** to finish text view setting.

Class	Item	Description
General	Language	Select the language to see the text file (34 Languages)
	Resume	User can see the page which user stopped to read last time (On/Off)
	Text Half Tone	Transparence rate setting (0~3)
	Auto Page (sec)	Set up the speed to turn the pages (0~30 sec)

Special Functions(Common to Video/Audio)

Bookmark

If you set a certain position in a file being played, the file is played from the specified point or the specified position is searched and played, so that you can promptly search a desired position.

Book mark mode on/off



Bookmark mode on:

If you press the **[A-B]** button **long** during playing a file, **'Bookmark Mode On'** message is displayed to show bookmark mode activated.



Bookmark mode off:

If you press the **[A-B]** button **long** again in bookmark mode, **'Bookmark Mode Off'** message is displayed to show bookmark mode deactivated.

Position setting



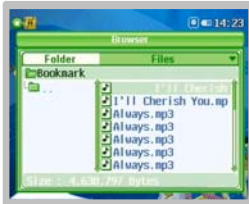
If you press the **[OSD]** button **shortly** in bookmark mode, the selected position is marked.

Searching during play



Push the **jog button shortly** in ◀ or ▶ direction to move to the previous/next bookmark position.

Searching in the Search screen



Press the **jog button** in \wedge or \vee direction in the '**Bookmark**' folder on the searching screen to move to the bookmarked file. Press the **jog button** to play from that position.

Delete Bookmark (This function is permitted only on the searching screen.)



Using the **jog button** in the '**Bookmark**' folder on the searching screen, select the '**Bookmark**' folder or a specific file bookmarked in the '**Bookmark**' folder and press the **[A-B] button long**.

- Bookmark folder selected: Deletes all files bookmarked.
- File in Bookmark folder selected: Deletes only the selected bookmark.

Favorite

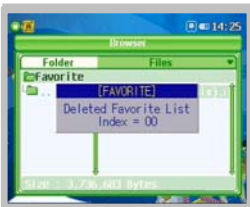
This function is used to select preferred video/audio files and play only the selected files.

Add Favorite (This function is permitted only on the searching screen.)



Select a specific file on the video/audio file searching screen and press the **[A-B]** button **shortly** to add the selected file in the Favorite folder.

Delete Favorite (This function is permitted only on the searching screen.)



Using the **jog button** in the **'Favorite'** folder on the searching screen, select the 'Favorite' folder or a specific file bookmarked in the 'Favorite' folder and press the **[A-B]** button **long**.

- Favorite folder selected: Deletes all favorite files added.
- File in Favorite folder selected: Deletes only the selected favorite files.

Section Repeat

You can set a specific section and play it repeatedly.



1. Press the **[A-B]** button **shortly** at the position to start repeated play.
 - The [A→] icon is displayed on the screen.



2. Press the **[A-B]** button **shortly** again at the position to finish repeated play.
 - The [A↔B] icon is displayed on the screen and the selected section is played repeatedly.



3. Press the **[A-B]** button again if you want to clear the section repeat function during repeated play.
 - The **[A↔B]** icon disappears and repeated play is cleared.



NOTE

In case of video files, the play start position may be a little delayed compared with the specified position from the characteristics of files.

Setting Function

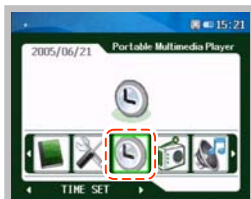
System Set



1. Push the **jog button** in ◀ or ▶ direction on the main menu screen to move to the **[SYSTEM SET]** menu and press the **jog button**.
2. Push the **jog button** in ^ or v direction to select an item to set and push it in ◀◀ or ▶▶ direction to set the selected item.
 - Press the **[MENU]** button **shortly** to exit the system set screen.

Class	Item	Description
General	Language	Sets the language displayed on the screen (English)
	Scroll Speed	Sets character scroll speed (0~2)
	Half Tone	Sets transparency of the set menu screen (0~3)
Power	LCD Off (Sec)	Sets LCD off time when there is no button operation (0~30)
	Power Off (Min)	Sets automatic power off time (0~150)
Display	Display Out	Sets display output mode (LCD/TV)
	LCD Backlight	Sets brightness of LCD panel (0~10)
	TV Standard	Sets TV output mode (NTSC: Korea/PAL: Europe)
	TV X Position	Moves TV screen left and right
	TV Y Position	Moves TV screen up and down
System Default	Load Default	Initializes user set environment (The stored data is not deleted.)
System Information	Identifies Software version/Camera/Audio/Memory (64MB)/Hard Disk information	

Time Set



1. Push the **jog button** in **◀** or **▶** direction on the main menu screen to move to the **[TIMER SET]** menu and press the **jog button**.
2. Push the **jog button** in **∧** or **∨** direction to select an item to set and push it in **◀** or **▶** direction to set the selected item.
3. Press the **[MENU]** button **shortly** to exit the timer setting screen.

Class	Item	Description
Time	Hour/Minute	Sets the current time (24 hour scheme) - Hour (0~23) - Minute (0~59)
	Day/Month/Year	Sets the current date. - Day (1~31) - Month (1~12) - Year (2000~2099)

Change Background Image

You can change the background screen of the body using a desired image (picture) file.

1. Connect the USB port of the body with that of PC using the USB cable.
2. Copy an image file in the '**System**' folder of '**PMP**' from Windows Explorer.
3. Rename the copied file as '**Background.jpg**'.
4. When the USB cable is disconnected, the image file copied in the 'System' folder automatically appears on background screen.



NOTE

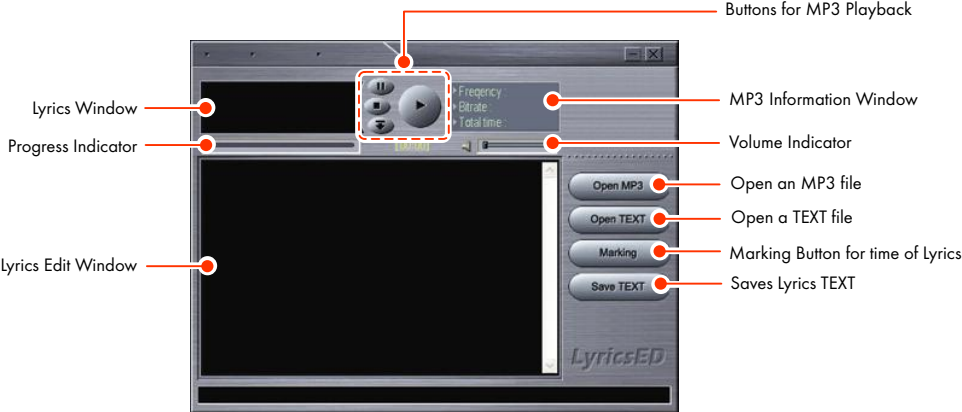
You should copy the image file for background screen in the 'System' folder with the following format:

File name: Background.jpg

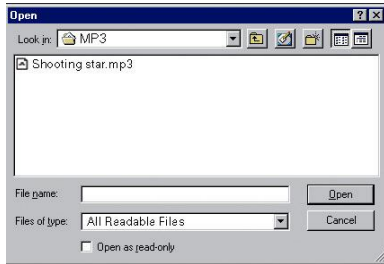
File size: Image file size less than 128KB

How to use LyricsED

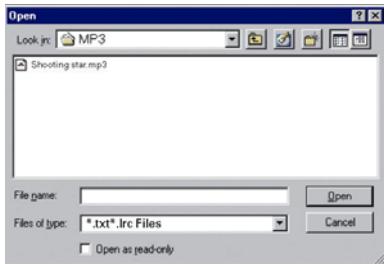
1. Clicking the **Lyrics icon** will show this screen below (as illustrated).



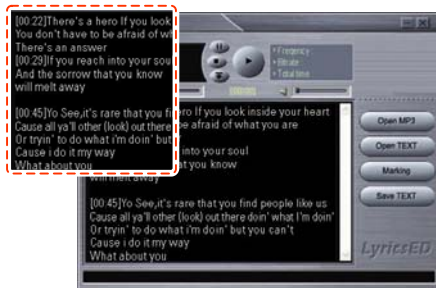
2. Click the **[Open MP3]** button to select an MP3 file and press the **[Open]** button.



3. Click the **[Open TEXT]** button to select a lyrics text file and press the **[Open]** button.



4. Press the **[Stop]** button if you want to stop, and press the **[Play]** button if you want to play again.
5. Press the **[Marking]** button and drag to select the lyrics in the Lyrics Edit Window to mark the time at the beginning of the sentence.



6. Press the **[Save TEXT]** button, and then it will be saved.

7. Press the **[Play]** button to play the music and the lyrics will be displayed in the Lyrics window.



NOTE

Music and lyrics files should be saved as the same file name in the same folder, otherwise it can not be displayed.

Upgrading Firmware

You can download a new version of firmware and upgrade your system in the following procedure.

- 1.** Visit the product homepage (www.grundig.com), and download the new version of firmware to PC.
- 2.** Connect the player and PC with the USB cable.
- 3.** Save the downloaded firmware file in the folder 'System' Folder of 'PMP'.
- 4.** If you disconnect the USB cable from the player, the firmware is automatically upgraded.
- 5.** To upgrade a up to dated firmware ver. You have to check the modified items at homepage.



NOTE

Make sure that the battery is fully charged before upgrading a firmware.

If the power is off during upgrading, the product can be seriously damaged. Therefore, leave the power adapter connected during upgrading, so that the power should not be off during upgrading.

Troubleshooting

This section provides the problems and solutions in using VP 6200/30GB.

Check the following before contacting the customer center.

1. The product is remained off and no information is displayed on the LCD.

Recharge the battery.

2. As the power is on, the message 'Hold Status, Power Off' is displayed, and then, the power gets off.

Release the HOLD switch, and switch on power again.

3. The buttons do not work.

- 1) Check if the lock icon is displayed on the LCD.
- 2) If the lock icon is displayed, release the HOLD switch.
- 3) If the buttons do not work as the HOLD switch is released, press the **[Reset]** button with a pin.

4. The LCD screen flickers up/down.

If 'TV' is selected as the screen output, the LCD screen flickers. It is the process to adjust the TV screen, and not a defect.

5. The TV screen flickers or displays image abnormally if 'TV' is selected as the screen output.

- 1) To watch the TV, you should set the player to the TV broadcasting system.(e.g. PAL for European countries)
- 2) Check if the TV broadcasting system is 'NTSC' or 'PAL', and set up the player properly.

6. Abrupt power off

- 1) Check if 'Power Off' is selected in the [SYSTEM SET] menu in the main menu screen.
- 2) Check if the battery is discharged, and recharge the battery.

7. Abrupt LCD screen off

Check if 'LCD Off' is selected.

8. The movie/audio/image file is not played.

- 1) The file format must be supported by the player.
- 2) Check if the file to play is supported by the player, and select the supported file format.
- 3) If the file format is not supported by the player, convert the file format with the supplied file format conversion software program.

9. No picture or sound of video

- 1) Check the video file in the 'Movie' folder.
- 2) Check if the 'Power LED' is blue, and move the **[ON/OFF]** button slightly following the arrow.

10. No sound or low volume for video/audio

- 1) Check the video/audio file in the 'Movie' or 'Music' folder.
- 2) Check if volume is '00', and adjust volume by moving the **jog button** to \wedge or \vee .

11. The display screen of the movie or image file is too small.

- 1) The moving picture file might be recorded in small screen.
- 2) The size of the image file might be small.

Specifications

Part	Item	Specifications
Audio	No of channels	Stereo (Left/Right)
	Frequency range	20 Hz ~ 20 kHz
	Headphone output	Left 6 mW + Right 6 mW (Max. volume, 16Ω)
	Speaker output	Left 250 mW + Right 250 mW (Max volume, 8Ω)
	Signal to noise ratio	90 dB or higher (with A filter)
FM radio	Frequency range	87,5 MHz 108.0 MHz (worldwide)
	Signal to noise ratio	50 dB or higher (with A filter)
File	Decoding file	Video: AVI (XviD), DivX (3.x, 4.x, 5.x), ASF (Only using the file which is created after the PMP recording) Audio: MPEG 1/2/2.5 Layer3, WMA Image: JPG, GIF, BMP
	Encoding file	Audio: MP3, Video: ASF (640×480, 320×240)

Part	Item	Specifications
File	Bit Rate	MP3: 16 kbps ~ 320 kbps, VBR (Variable Bit Rate) WMA: 32 kbps ~ 320 kbps
	Tag	ID3 V1 Tag, ID3 V2 Tag
	Caption	Video subtitle file (.smi), Audio subtitle file (.lrc)
	Text File	TXT Support
General	Dimension(W×H×D)	About 116×78×23 mm
	Weight	About 220 g
	Play time	Video: about 7 hrs (QVGA), 5 hrs (VGA) (LCD light 5, Vol. 20, Using Earphone) Audio: about 13 hrs (LCD Off, 128Kbps, Vol.20, Using Earphone) Radio: about 21 hrs (LCD Off, Vol.20, Using Earphone)
	Language	Multi-language
	Storage	1.8" 30 GB HDD
	USB	USB 2.0 High Speed

Part	Item	Specifications
General	Recharging	Fully charged with the adapter (5 hrs)
	Battery	Li-polymer battery
	LCD	3.5 inch TFT LCD

Environmental note



This product has been made from high-quality parts and materials which can be re-used and recycled.

Therefore, do not throw the product away with normal household waste at the end of its life. Take it to a collection point for recycling electrical and electronic devices. This is indicated by this symbol on the product, in the operating manual and on the packaging.

Please find out about collection points operated by your local authority.

Help protect the environment by recycling used products.

