

*How to Use and Enjoy Your*

# TREÓ™ 10

DIGITAL MUSIC JUKEBOX



***e.Digital***

## Copyright Information

*How to Use and Enjoy Your Treó 10* © 2001 e.Digital Corporation. All rights reserved. Created for e.Digital Corporation by Manual Labour, Inc.

Under the copyright laws, neither the documentation nor the software maybe copied, photocopied, reproduced, translated, or reduced to any electronic medium or machine-readable form, in whole or in part, without the prior expressed written consent of e.Digital Corporation.

Microsoft®, Windows®, and Windows Media™ are trademarks or registered trademarks of the Microsoft Corporation.

MusicMatch® is a trademark or registered trademark of MusicMatch, Incorporated.

Treó is a trademark of Hy-Tek Manufacturing.

e.Digital™, MicroOS™, and Smart Song Selection™ are trademarks or registered trademarks of e.Digital Corporation.

All other product, service, and company names are the property of their respective owners.

All contents of the CD-ROM included with this product are copyrighted by e.Digital Corporation or used with the permission of their copyright owners. It is unlawful to copy or distribute this information in any way without the express written consent of e.Digital Corporation.

# Introduction

Welcome to the future of personal music players! Using the latest technological advances in both hardware and software, the Treó™ 10 Digital Music Jukebox allows you to carry a sizable audio library—over 150 hours—of your favorite music wherever you go.

You can enjoy the following features:

- A rechargeable Lithium-Ion battery with a six hour battery life.
- Convenient stereo earphones that allow you to use your Treó 10 anywhere.
- Playback of both MP3 and/or Windows Media™ files.
- PC software to organize your music collection.
- A continuously up-to-date player with free feature upgrades over the Internet.
- Smart Song Selection™ lets you navigate your music library while listening.
- Customize your jukebox with adjustable settings.



# Table of Contents

<b>Introduction</b> .....	<b>iii</b>
<b>Chapter 1: Getting Your Treó 10 Up and Running</b> ...	<b>1</b>
What Accessories Are Included with My Treó 10? .....	1
How Do I Begin Using My Treó 10?.....	2
Charging the Battery .....	2
Installing Music Explorer .....	3
Installing MusicMatch .....	6
Downloading Music .....	7
Powering Your Treó 10 On and Off .....	8
Listening to Music .....	9
What's On My Treó 10?.....	10
What's On the Treó 10 Screen? .....	11
How Do I Change the Lithium Ion Battery? .....	14
<b>Chapter 2: Adding Music to Your Treó 10</b> .....	<b>17</b>
How Do I Get Ready to Transfer Music? .....	17
Connecting the USB Cable .....	18
How Do I Transfer Music from My PC to	
My Treó 10?.....	19
Using Music Explorer .....	19
Creating Storage Folders .....	19
Creating Subfolders .....	20
Transferring Files .....	20
Initializing Storage Media .....	22
How Do I Transfer Music from My Treó 10 to	
My PC? .....	23
Transferring Files .....	23
Renaming Folders or Tracks .....	23
Deleting Files .....	24

How Do I Convert Music Tracks to Digital Music Files? .....	24
Creating Digital Music Files .....	25
<b>Chapter 3: Navigating Your Music .....</b>	<b>29</b>
How Do I Navigate and Play Music Files? .....	29
Understanding the Music File System .....	30
Browsing Your Music .....	31
<b>Chapter 4: Customizing Your Treó 10 .....</b>	<b>33</b>
How Do I Adjust My Treó 10's Settings? .....	33
Locking and Unlocking the Buttons .....	34
Choosing the Equalizer Setting .....	35
Customizing the User Equalizer Setting .....	35
Turning On the Backlight .....	36
Selecting the Play Mode .....	36
Setting Up the Automatic Power Off .....	38
How Do I Reformat the Treó 10's Hard Drive? .....	38
<b>Chapter 5: Troubleshooting .....</b>	<b>41</b>
How Do I Solve Problems With My Jukebox? .....	41
Why Can't I Turn On My Treó 10? .....	41
Why Did My Treó 10 Turn Itself Off? .....	41
Why Don't The Buttons Work? .....	41
Why Does My Player Play Tracks in the Wrong Order? .....	41
Why Does My Jukebox's Screen Look Scrambled? .....	42
I Got a Message that There Are No Music Files On My Player. What Do I Do? .....	42
How Do I Solve Sound Problems? .....	42
Why Don't I Hear Any Sound? .....	42
Why Do The Files On My Treó 10 Sound Distorted? .....	43
Why is My Player Skipping? .....	43

How Do I Solve Problems Connecting to My PC? .....	43
Why Can't I Connect to My PC? .....	43
Why Do I Get "Undefined USB Driver" Error Messages When I Connect to My PC? .....	43
I Inserted the Treó 10 Installation CD, but it Didn't Automatically Start. What Should I Do? .....	44
<b>Appendix: Product Information .....</b>	<b>45</b>
Technical Specifications .....	45
Computer Specifications .....	45
Minimum System Requirements .....	46
CODEC Settings .....	46
Factory-Default Treó 10 Settings.....	47
Using Your Treó 10 Properly .....	47
Warnings .....	48
Approvals .....	49
Limited Warranty .....	50
<b>Index .....</b>	<b>53</b>





# Chapter 1: Getting Your Treó 10 Up and Running

Your Treó 10 Music Jukebox allows you to carry a virtual library of music with you. Using this chapter, you'll be able to get your Treó 10 up and running quickly.

This chapter covers how to begin using your Treó 10 once you unpack it. It includes the following sections:

“What Accessories Are Included with My Treó 10?”	page 1
“How Do I Begin Using My Treó 10?”	page 2
“What’s On My Treó 10?”	page 10
“What’s On the Treó 10 Screen?”	page 11
“How Do I Change the Lithium Ion Battery?”	page 14

## What Accessories Are Included with My Treó 10?

When you open the box you will find the following items:

1. Treó 10 Digital Music Jukebox
2. Carrying case
3. Compact stereo earphones with carrying case
4. One pre-installed, rechargeable Lithium-Ion battery
5. AC power adaptor
6. Shielded USB cable
7. Music Explorer™/MusicMatch® software CD-ROM
8. *How to Use and Enjoy Your Treó 10*

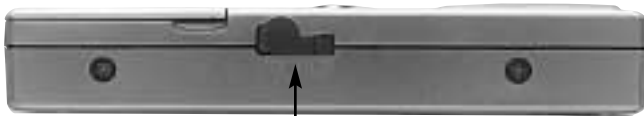
# How Do I Begin Using My Treó 10?

Before you can use your Treó 10 jukebox, you need to get it charged and loaded with music. You can do that using the accessories included with your jukebox.

## Charging the Battery

Your Treó 10 comes with a rechargeable Lithium Ion battery that, once charged, lasts for approximately six hours of continuous operation. The battery is fully rechargeable and should last for years, even with extensive use. You must charge your battery before using your Treó 10 for the first time. To charge the battery:

1. To begin charging the battery, plug the provided AC Power Adaptor into the External Power jack on the right side of your jukebox. Connect the other end to a wall outlet. Your Treó 10 will last for six hours of continuous operation on a fully charged battery.



**EXTERNAL  
POWER**



Do not use any other type of external power adaptor. It will damage the jukebox.



Once you connect to external power, you can immediately begin using your player. However, it takes approximately three (3) hours to fully charge the battery.

## Installing Music Explorer

Before you can transfer music files to your Treó 10, you must install the Music Explorer software on your PC. This software allows you to:

- Organize your music files and
- Move them to and from your player.

The Music Explorer software works much like Windows Explorer™ on your home PC. The application provides the link between the files on your computer and the Treó 10.



Install the Music Explorer software *before* connecting your player to the USB cable and your PC. If you don't, your PC will have problems recognizing the USB driver on your Treó 10.

To install the Music Explorer software:

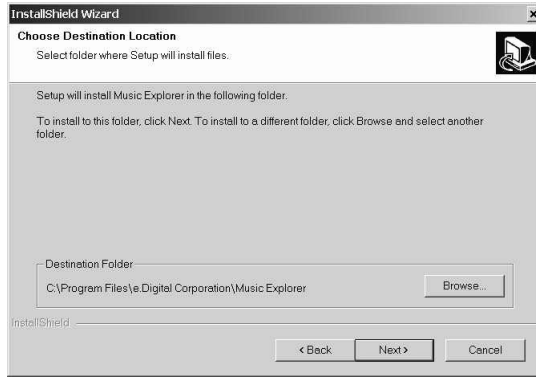
1. Insert the installation CD into your PC's CD-ROM drive. The InstallShield Wizard appears.



2. Click **Next**.

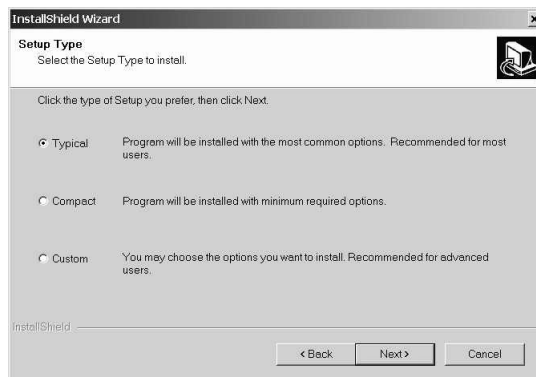
The License Agreement appears.

3. Read the License Agreement and click **Yes**. The Choose Destination Location screen appears:



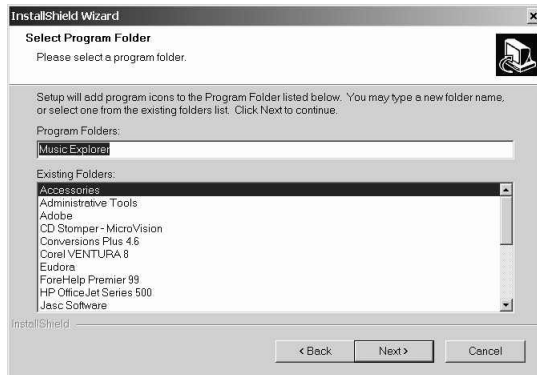
4. Click **Browse** to select an installation directory, then click **Next**.  
Or, to store the software at the default location, click **Next**.

The Setup Type screen appears:

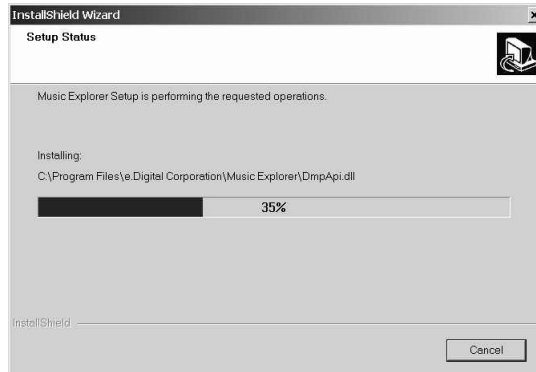


5. Choose the type of installation (**TYPICAL** is recommended), then click **Next**.

The Select Program Folder screen appears:



6. Select a program folder, then click **Next**. The Setup Status screen appears:



After the installation is finished loading, the InstallShield Wizard Complete screen appears.



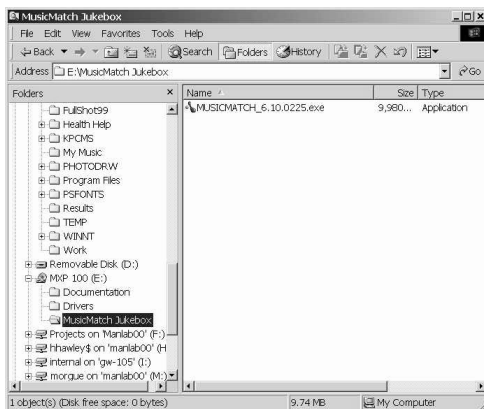
7. Click **Finish** to complete the installation. After installing the software, you can now use it to load music onto your Treó 10. For more information about loading files onto your player, see “Adding Music to Your Treó 10” on page 17.

## Installing MusicMatch

If you need a way to create digital music files from your current music collection, you can install the MusicMatch™ software included on your e.Digital Music Explorer CD.

To install MusicMatch:

1. Right-click on the **Start** button.
2. Select **Explore**. Windows Explorer™ appears.
3. Navigate to your CD-ROM drive and double click on it. The folders on the CD-ROM appear:



4. Select the **MusicMatch Jukebox** folder. The file opens, and its contents appear in the right window.

5. Double-click the **.exe** file. The InstallShield Wizard appears:



6. Complete the setup as instructed. For more information about the MusicMatch software, go to the online help file included with the MusicMatch software, or go to <http://www.musicmatch.com>.

## Downloading Music

Once you've installed Music Explorer, you can transfer music files to and from your Treó 10. Until you do that, you won't have any music on your player to listen to.



Always use external power when transferring music from your PC to your Treó 10.

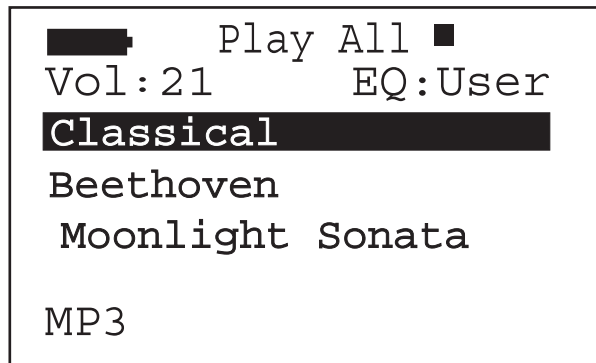
For more information about adding music to your Treó 10, see “Adding Music to Your Treó 10” on page 17.

## Powering Your Treó 10 On and Off

- To turn on the jukebox, press and hold the **Play/Pause** button. You will see this startup screen:



The Play screen will appear:



- To shut off the jukebox:
  1. If music is playing, press **Stop/Off** to stop play.
  2. Press and hold the **Stop/Off** button until the screen is blank.





Your Treó 10 will also turn itself off after one minute of inactivity. You can change the automatic power off setting from the Main Menu. For more information, see “Setting Up the Automatic Power Off” on page 38.

### **Listening to Music**

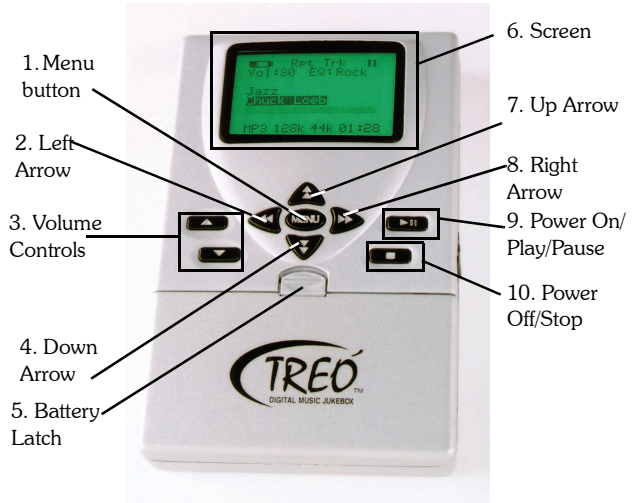
Once you have loaded music onto your player, you can begin listening to it. For more information about adding music to your Treó 10, see “Adding Music to Your Treó 10” on page 17.

To listen to a track, press **Play**. The selected track begins playing. Depending on the selected Play Mode, your Treó 10 will play or repeat the selected track, album, genre, or all stored music. For more information about Play Modes, see “Selecting the Play Mode” on page 36.

You can also browse your music files, albums, and genres. For more information on browsing your music, see “Navigating Your Music” on page 29.

# What's On My Treó 10?

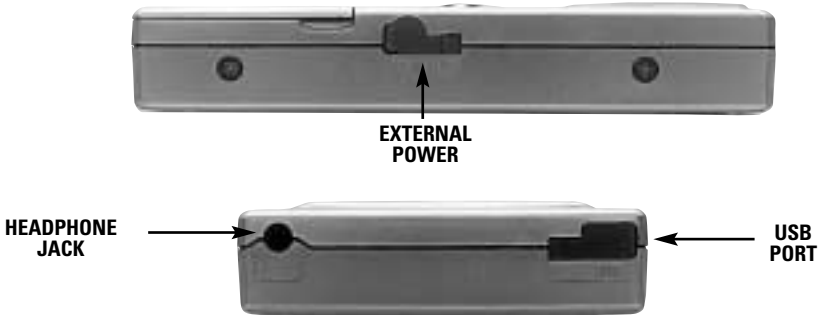
Once you've unpacked your jukebox, you can see the following features on the front of your player.



Press this:	To:
1. Menu Button	View the Main Menu. For more information about the Main Menu, see “Customizing Your Treó 10” on page 33.
2. Left Arrow	Scroll back through available choices.
3. Volume Controls	Increase or decrease the volume. The volume can range from 0 to 30.
4. Down Arrow	Move down one item on the screen.
5. Battery Latch	Remove the Lithium Ion Battery. For more information about charging the battery, see “Charging the Battery” on page 2.
6. Screen	View jukebox activity.
7. Up Arrow	Move up one item on the screen.
8. Right Arrow	Scroll forward through available choices.

Press this:	To:
9. Power On Play/Pause	Turn your Treó 10 on; play or pause music.
10. Power Off/ Stop	Turn your Treó 10 off; stop music play.

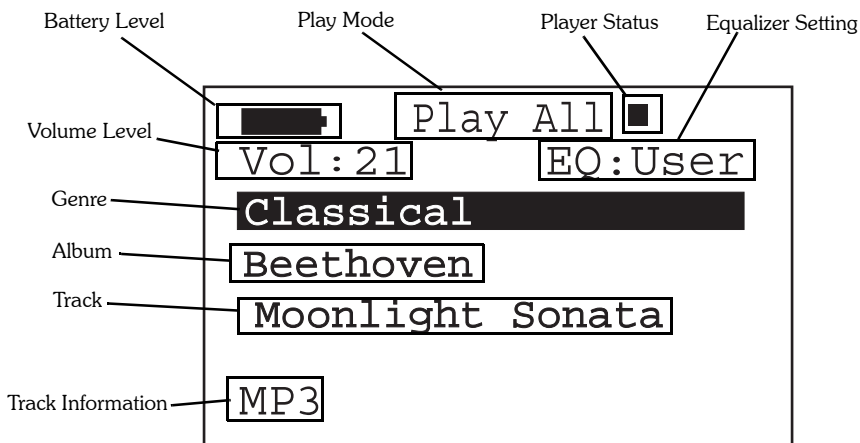
Then, look at the right side and the top for the following connection jacks:



## What's On the Treó 10 Screen?




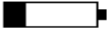

Understanding your Treó 10 screen's layout will help you navigate and play the music you want quickly. It will also help you recognize when your player needs to be recharged, what mode it's in, and where your music files are.

Your Treó 10 displays information in similar ways no matter whether you're playing music, browsing files, or changing your settings:




### Battery Level

You can see the condition of the Treó 10's battery in the top left of the screen

When you see this: The battery is:	
	Fully charged
	Partially discharged
	Half discharged
	Almost discharged
	Being charged

### External Power Source





When you connect your Treó 10 to an external power source using the AC adaptor, you will see a  displayed on the screen.

## Play Mode

The Play Mode controls what order your tracks play in. You can change this setting from the Main Menu. For more information about changing the Play Mode, see “Selecting the Play Mode” on page 36.

## Player Status

You can quickly tell whether you are playing, pausing, or stopped by looking at the player status area of the screen.

When you see this:	Your player
	Is stopped
	Is playing the selected track
	Is paused
	Currently has all buttons locked

## Volume Level

You can see the current volume level directly under the battery level on the screen. For more information about controlling volume, see “What’s On My Treó 10?” on page 10.

## File Information

This area of the display contains the name of the selected:

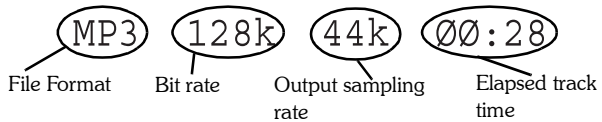
- Genre
- Album
- Track

This information is especially useful when you are browsing files to navigate to a specific selection. For more information about browsing files on your Treó 10, see “Browsing Your Music” on page 31.

### Track Information

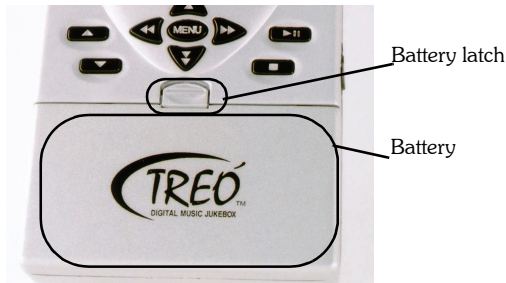
Along the bottom of the display you will see information about the selected or playing track. The information displayed will vary depending on what state your player is in:

- When no music is playing or paused, you will only see the selected track's format, such as **MP3**.
- When music is playing or paused, additional information appears across the bottom of the screen:



## How Do I Change the Lithium Ion Battery?

The Lithium Ion battery included with your Treó 10 is designed for years of use, and is fully rechargeable. However, if you do need to change it at some point, you can quickly access it using the battery latch on the front of the player. The battery is connected to the front of the unit:



To remove the battery:

1. Slide the battery latch up, towards the top of the player.



2. Grasp either side of the battery and pull out, away from the player.  
The battery detaches from the player.

To order a new battery, contact e.Digital at

- [www.edigital-store.com](http://www.edigital-store.com) or
- 1-877-278-1574





# Chapter 2: Adding Music to Your Treó 10

In order to begin enjoying your Treó 10, you must download music from your PC. The Treó 10 includes software that allows you to easily transfer music back and forth between your PC and your player. This chapter includes the following sections:

“How Do I Get Ready to Transfer Music?”	page 17
“How Do I Transfer Music from My PC to My Treó 10?”	page 19
“How Do I Transfer Music from My Treó 10 to My PC?”	page 23
“How Do I Convert Music Tracks to Digital Music Files?”	page 24

## How Do I Get Ready to Transfer Music?

To transfer files using Music Explorer, or to create them using MusicMatch, make sure that your PC is running at least a Windows Operating System and that the system recognizes the USB port on your PC. To check if the system recognizes your PC's USB port:

1. Double-click **My Computer**.
2. Double-click **Control Panel**.
3. Double-click **System**.
4. Click the **Device Manager** tab.
5. Look for the USB controllers. If none appear, you need to enable the USB on the BIOS. See your PC's operating manual for instructions on how to do this.



Make sure that you already have the Music Explorer and MusicMatch software installed before you actually connect the USB cable from your Treó 10 to your PC. For more information on installing the software, see “Installing Music Explorer” on page 3 and “Installing MusicMatch” on page 6.

### **Connecting the USB Cable**

Use the USB cable packaged with your Treó 10 to connect the player to your PC. For more information on the location of the USB port on your Treó 10, see “What’s On My Treó 10?” on page 10.



The Treó 10 must also be connected to the external power source for the USB connection to work properly. For information on connecting the external power source, see “Charging the Battery” on page 2.



Once you’re finished transferring music, be sure to disconnect the Treó 10 from your computer’s USB cable.

Some computers try to boot from peripheral devices. If the player is connected before you start up your PC, your computer may attempt to boot from it.

# How Do I Transfer Music from My PC to My Treó 10?

The Music Explorer software included with Treó 10 allows you to manage your music files. Establishing file folders and transferring music tracks between the Treó 10 and your computer is quick and easy with Music Explorer.

## Using Music Explorer

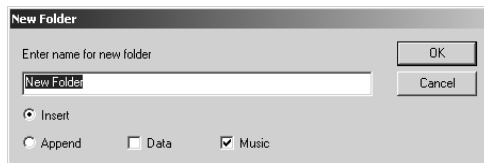
The main screen for Music Explorer functions just like Windows Explorer™ on your PC. When you first access the main screen, you will see an **Internal Storage** icon. This is where all the folders you create to store and organize your music are stored.

## Creating Storage Folders

Storage folders allow you to group your music so that you can navigate to specific tracks more easily. The names you assign the storage folders here are the genre names you will see on your Treó 10. For more information about genres, see “What Is a Genre?” on page 30.

To create a folder:

1. Right-click the **Internal Storage** icon.
2. Select **New Folder**.



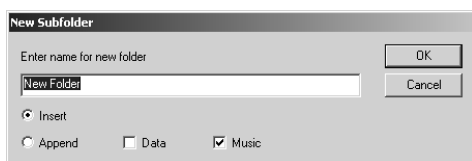
3. Accept the dialog box defaults. Type a name for your folder. Folder names can contain up to 64 characters and can include letters, numbers, and spaces.
4. Click **OK**.

## Creating Subfolders

Level two folders, or “subfolders,” store the music files. Music files are what show up as tracks on your Treó 10. For more information on tracks, see “What Is a Track?” on page 30. The names you assign the subfolders here are the album names you will see on your Treó 10. For more information about albums, see “What Is an Album?” on page 30.

To create a subfolder:

1. With your right mouse button, click on a folder icon.
2. Select **New Subfolder**.



3. Accept the dialog box defaults. Type a name for your subfolder. Subfolder names can contain up to 64 characters and can include letters, numbers, and spaces.
4. Click **OK**.



The Treó 10 will automatically alphabetize genres and albums. However, you assign the track order using Music Explorer.

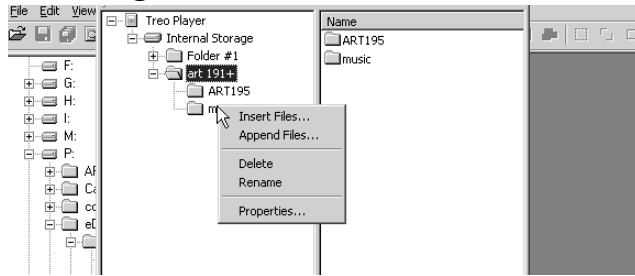
## Transferring Files

Music Explorer provides two ways for you to easily and quickly transfer files from your PC to your Treó 10—using the Quick Menu, or using drag and drop.



Individual music files, also referred to as ‘tracks,’ can **only** be transferred at the subfolder level.

- Using the quick menu:
  1. Right-click a subfolder.



2. Select a transfer method:
  - **Insert files** places transferred music in front of any stored music already in the folder.
  - **Append files** places transferred music at the end of any stored music already in the folder.

Whichever method you select, the following dialog appears:

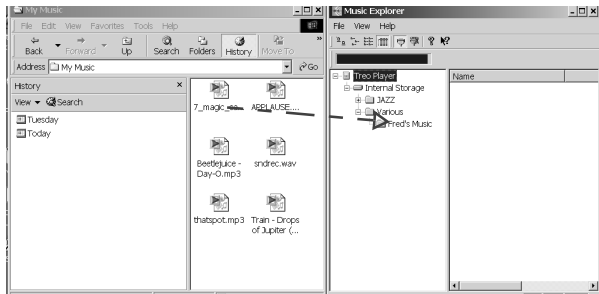


3. Select the file(s) to be transferred. (Hold down the **Ctrl** key when selecting multiple files.)
  4. Click **Open**. Music Explorer transfers the files.
- Using drag and drop:
    1. Open Windows Explorer.
    2. Select the folder(s) or file(s) to be transferred.



You can copy entire music folders from your PC to the Treó 10.

3. Hold down the left mouse button and drag the selected folder to a storage folder on the Treó 10.



4. Release the left mouse button. Windows copies the selected files to the selected Treó 10 storage folder. Those files now appear on your Treó 10 player.

## Initializing Storage Media

Like formatting a computer disk drive, you can initialize your Treó 10's hard disk drive.



Initializing the hard disk drive will remove **all** files from your Treó 10.



You can also reformat the disk directly from the Treó 10 buttons. For more information, see see “How Do I Reformat the Treó 10's Hard Drive?” on page 38.

To initialize the media:

1. Verify that the Treó 10 does not contain any files you wish to keep.
2. Right-click **Internal Storage**.
3. Select **Initialize Storage**.

The player immediately initializes the media and redisplay the browse list in Music Explorer. You may now begin transferring

music files to the Treó 10. For more information, see “How Do I Transfer Music from My PC to My Treó 10?” on page 19.

## How Do I Transfer Music from My Treó 10 to My PC?

Music Explorer also allows you to move the files stored on your Treó 10 to your computer. That way, you can use your Treó 10 as a transport device for your music or data files.

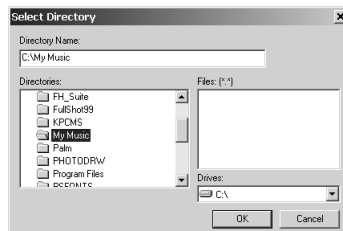


The Treó 10 plays only MP3 and Windows Media™ files. However, you can place any type of file in any of the subfolders, which means you can use your Treó 10 as a data transport tool.

### Transferring Files

To transfer files from the player to your PC:

1. Right-click the file(s) you want to transfer.
2. Select **Copy to PC** from the menu.
3. Select the directory to which you want to copy the file.



4. Click **OK**.

### Renaming Folders or Tracks

You can rename folders or tracks using Music Explorer.

To rename a folder or track:

1. Right-click the folder or track.

2. Select **Rename**.



3. Enter a new name for the folder or track.



Folder, subfolder, and track names can be no longer than 64 characters.

4. Click **OK**.

### **Deleting Files**

Music Explorer allows you to remove music files you no longer want on your Treó 10.

To delete files:

1. Highlight a file, a group of files, or a folder.
2. Right-click on the highlighted selection.
3. Select **Delete**.
4. At the confirmation prompt, click **Yes**. If you want to keep the files instead, click **No**.

## **How Do I Convert Music Tracks to Digital Music Files?**

Your installation disc comes with a copy of Music Explorer and a copy of MusicMatch, software that allows you to convert music tracks from any supported format to digital music files. This conversion, sometimes called “ripping,” is like recording your CDs to another medium (like tape or mini-disc). Once they are copied or transferred onto your PC’s hard drive, you can transfer your favorite music tracks to the Treó 10.





You cannot transfer files directly from MusicMatch to your player. You must use Music Explorer. For more information, see “How Do I Transfer Music from My PC to My Treó 10?” on page 19.

### Creating Digital Music Files

The Treó 10 plays only MP3 and Windows Media™ files. However, you can place any type of file in any of the subfolders, which means you can use your Treó 10 as a data transport tool.

Certain CODEC settings optimize the music files you create. For more information, see “CODEC Settings” on page 46.

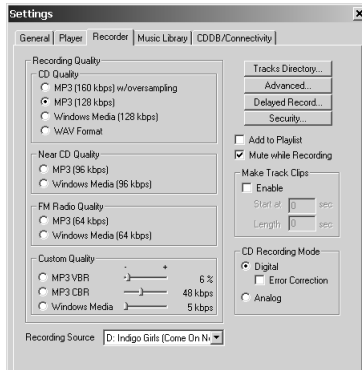


MusicMatch can display track, album title, and artist information for the CD in your computer’s CD drive via the Internet’s Compact Disc DataBase (CDDDB). You must be connected to the Internet to view and download this information. If you are not, each track will simply be labeled with the track number.

To create a music file:

1. Load a music CD into your computer’s CD drive.
2. Open MusicMatch.
3. Select **Settings** from the **Options** menu.

4. Select the **Recorder** tab.



5. Click **Tracks Directory**.



6. Specify the directory where the new files will be stored after they are converted by doing one of the following:
- Select the default directory.
  - Type a path.
  - Click the button and browse to a directory.



You cannot create music files directly on the Treó 10; you must first store them on your computer's hard drive then transfer them to your Treó 10. For more information, see "How Do I Transfer Music from My PC to My Treó 10?" on page 19.

7. Click **OK**.

8. On the MusicMatch player, press .



9. Select the tracks on the CD you wish to convert into digital music format. Checked tracks will be recorded.



10. Select the **Record** option on the recorder dialog box.



11. MusicMatch will record the selected tracks as digital music files and store them in the designated directory.



## Chapter 3: Navigating Your Music

Your Treó 10 has a simple file system that allows you to navigate and play the music you're looking for quickly. Or, you can begin playing music immediately, without having to browse files at all. You can also navigate files while you're playing music.

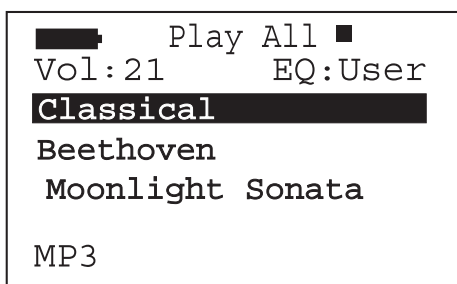
This chapter contains the following section:

“How Do I Navigate and Play Music Files?”

page 29

### How Do I Navigate and Play Music Files?

When you turn on the Treó 10, the Play screen appears with the selected music listed in the center of the screen:



Press the **Play/Pause** button. The selected track begins playing. Depending on the selected Play Mode, the Treó 10 will play or repeat the selected genre, album, track, or all stored music. For more information about Play Modes, see “Selecting the Play Mode” on page 36.

## Understanding the Music File System

With the Treó 10, you can store your music quickly, then find it easily.



You can scroll through genres, albums, or tracks until you find the particular selection you want. For more information about navigating folders, see “Browsing Your Music” on page 31. The e.Digital Music Explorer software included with your player allows you to organize your files. For more information about managing your files, see “Adding Music to Your Treó 10” on page 17.

### What Is a Genre?

A genre is a category of music. A genre can be any set of albums that you choose to group together based on music style, artist, etc. You can choose from any of the genres in the jukebox to play.

### What Is an Album?

An album is a group of music tracks. An album can correspond to a compact disc or it can be a collection of tracks that you choose to group together. You can select any album within a genre to play.

### What Is a Track?

A track is an individual music file. You can select any track within an album to play.

## Browsing Your Music

You can look for music on the Treó 10 at the genre, album, or track level using the arrow buttons. When the Treó 10 is not playing music, you can browse to a desired genre, album, or track and press **Play** to begin playing.

### How Do I Browse Genres?

1. Using the up and down navigation buttons, highlight the genre on your Treó 10.
2. Browse through the available selections using the left and right navigation buttons until you find the genre you are looking for.

### How Do I Browse Albums?

1. Using the up and down navigation buttons, highlight the album on your Treó 10.
2. Browse through the available selections using the left and right navigation buttons until you find the album you are looking for.

### How Do I Browse Tracks?

1. Using the up and down navigation buttons, highlight the track on your Treó 10.
2. Browse through the available selections the using the left and right navigation buttons until you find the track you are looking for.

### How Do I Browse While Playing Music?

If the Treó 10 is already playing music, you can still browse to a desired genre, album, or track to play using the Smart Song Selection™ feature. The currently playing song will continue to play until you press the **Play** button to start the new song. If you do not want to start

the new song, just stop pressing buttons for ten seconds and the display will revert to the currently playing song.



# Chapter 4: Customizing Your Treó 10

Your Treó 10 can be quickly customized to meet your needs. You can change its settings using the Main Menu, or reformat the player's hard drive.

This chapter includes the following sections:

“How Do I Adjust My Treó 10's Settings?”  
page 33

“How Do I Reformat the Treó 10's Hard Drive?”  
page 38

## How Do I Adjust My Treó 10's Settings?

You can customize the way your Treó 10 works by using the Main Menu. You can adjust the way the player selects and plays tracks, the time it takes for your player to shut itself off, and the equalizer settings for your player.

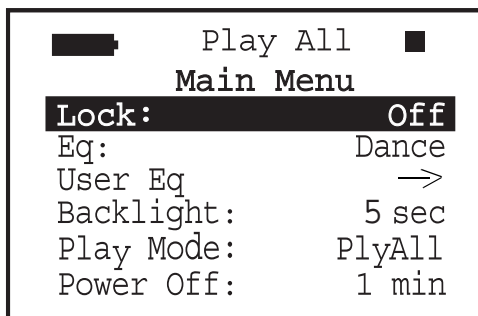


You don't have to adjust anything on the Main Menu to use your player. These options simply allow you to customize your player.



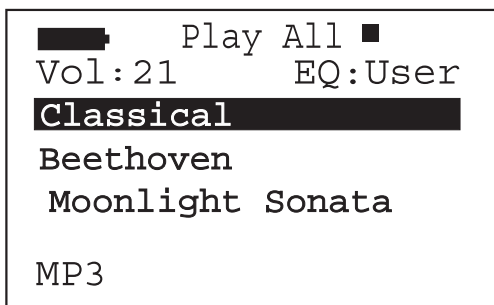
If you don't see the setting you're looking for on the screen, scroll up or down until you find the one you want.

To access the Settings menu, press **Menu**.  
The Main Menu appears:



Use the up and down arrows to highlight the option you wish to change. Use the right and left arrows to change the settings.

To exit the Main Menu, press **Menu**. The Play screen appears.



### Locking and Unlocking the Buttons

By setting the Lock option **On**, the buttons on your Treó 10 will be locked, except the **Menu** button.

To change the Lock setting:

1. Using the up and down arrows, highlight **Lock**.
2. Scroll through the available settings with the right and left arrows.
3. Press **Menu** to save your settings and return to the Play screen.

## Choosing the Equalizer Setting

The Treó 10 equalizer adjusts bass or treble to a variety of presets, or to a customized equalizer setting. Use the equalizer to enhance the sound of specific genres of music.

The equalizer presets are Flat, Rock, Latin, Dance, and Jazz. Flat is a neutral setting in which neither bass nor treble are emphasized.

You can also choose User, an adjustable setting. For more information about customizing the User equalizer setting, see “Customizing the User Equalizer Setting” below.

To select an equalizer setting:

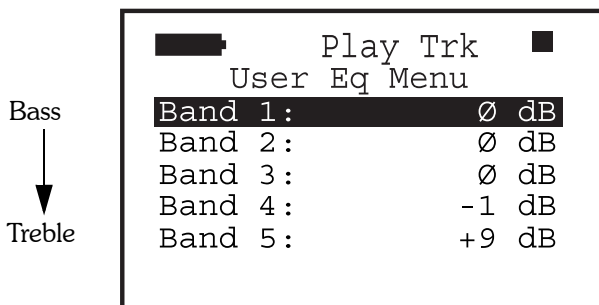
1. Using the up and down arrows, highlight **Eq.**
2. Scroll through the available settings with the right and left arrows.
3. Press **Menu** to save your settings and return to the Play screen.

## Customizing the User Equalizer Setting

The user equalizer allows you to customize one equalizer setting. There are five bands that are each adjustable from -9 (attenuate) to +9 (boost) dB.

To customize the user equalizer settings:

1. Scroll down to **User Eq.**
2. Press the right arrow button to change the settings.



3. Use the up and down arrows to highlight the band you wish to change.
4. Use the right and left arrows to change the settings.
5. When you're finished, press **Menu** to save your settings and return to the Main Menu.
6. Press **Menu** again to return to the Play screen.



Band 1 to Band 5 range from bass to treble, respectively.

### Turning On the Backlight

When the Backlight setting is on, press any button to illuminate the display during low-light situations. You can set the backlighting to be:

- never on
- shut off automatically after a specified time interval (one to five seconds)



When the backlight is on, it drains the battery. If you leave the backlight on, make sure you monitor battery life.

To change the backlight setting:

1. Using the up and down arrows, highlight **Backlight**.
2. Scroll through the available settings with the right and left arrows.
3. Press **Menu** to save your settings and return to the Play screen.

### Selecting the Play Mode

The Treó 10 can play music in a number of different ways.

In this mode	Your player will:
PlyAll	Play all stored music once.
PlyGen	Play the selected genre once.

In this mode Your player will:

PlyAlb	Play the selected album once.
PlyTrk	Play the selected track once.
RptAll	Play all stored music continuously.
RptGen	Repeat the selected genre continuously.
RptAlb	Repeat the selected album continuously.
RptTrk	Repeat the selected track continuously.
RdmAll	Play randomly selected tracks from stored music on the Treó 10 continuously.
RdmGen	Play randomly selected tracks from all music in the selected genre continuously.
RdmAlb	Play randomly selected tracks from all music in the selected album continuously.
Intro	Play nine seconds of each track of music stored on the Treó 10 once.



This mode can drain your battery quickly.

To set the play mode:

1. Using the up and down arrows, highlight **Play Mode**.
2. Scroll through the available settings with the right and left arrows.
3. Press **Menu** to save your settings and return to the Play screen.

## Setting Up the Automatic Power Off

Customize your Treó 10 to turn off automatically if you're not using it. You can set your player to turn off after one to ten minutes of inactivity. Or, select "Never," and your Treó 10 will never shut off automatically. The more quickly your player turns off after a period of inactivity, the longer your battery will last.

To set the Power Off timing:

1. Using the up and down arrows, highlight **Power Off**.
2. Scroll through the available settings with the right and left arrows.
3. Press **Menu** to save your settings and return to the Play screen.

## How Do I Reformat the Treó 10's Hard Drive?

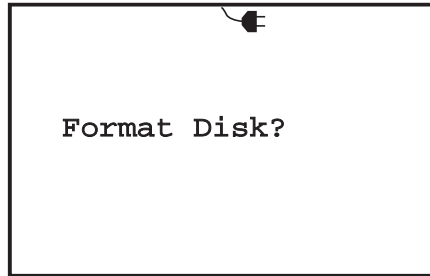
If you wish to erase all of the music files and file structure from your Treó 10, you can do so by reformatting the hard drive. This will clear your player of all files and information. To reformat the hard drive:

1. Turn your Treó 10 off by pressing and holding **Stop**.
2. Connect your player to the AC power adaptor, and plug the adaptor to an electrical outlet.

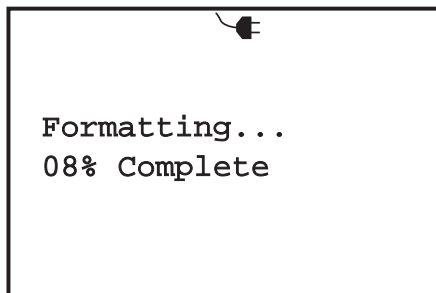
A message will appear on your screen that the battery is charging, or that charging is complete.

3. Press and hold **Stop** and **Play** simultaneously.

After a moment, a message will appear on your screen. Continue holding the buttons.



After a few more seconds, the screen will display the following message:



4. Release both buttons. The player will take up to 15 minutes to reformat the drive. Once it is complete, you can transfer music to it. For more information about transferring music, “Adding Music to Your Treó 10” on page 17.





# Chapter 5: Troubleshooting

## How Do I Solve Problems With My Jukebox?


### Why Can't I Turn On My Treó 10?

- The battery may be weak. Connect to external power, or replace the battery.
- If your unit has power and you know that it contains music, and it still does not work, try the emergency reset: push the **Right Arrow** button, **Menu** button, and **Volume Up** buttons simultaneously.

### Why Did My Treó 10 Turn Itself Off?

Treó 10 has a Power Off setting to control automatic shut-off and conserve battery power when you aren't using your player. Check the Power Off setting and adjust it as desired. For more information about the Power Off setting, see "Setting Up the Automatic Power Off" on page 38.

### Why Don't The Buttons Work?

Check the display. If  appears, the buttons are locked. For more information, see "Locking and Unlocking the Buttons" on page 34.

### Why Does My Player Play Tracks in the Wrong Order?

- The order that tracks play depends on how they were created on the MusicMatch software. For more information about using MusicMatch, see "How Do I Convert Music Tracks to Digital Music Files?" on page 24.
- Your player controls the order that tracks are played with the Play Mode setting. To

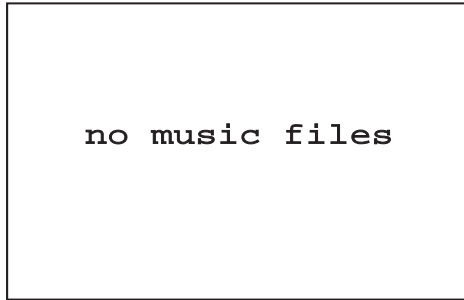
learn how to change that setting, see “Selecting the Play Mode” on page 36.

### **Why Does My Jukebox’s Screen Look Scrambled?**

This can occur when the battery is very weak. Replace or recharge the battery as soon as possible. For more information about charging the battery, see “Charging the Battery” on page 2.

### **I Got a Message that There Are No Music Files On My Player. What Do I Do?**

If you get this message below on your Treó 10’s screen, there are no music files loaded on your jukebox.



To add music files, see “Adding Music to Your Treó 10” on page 17. If this doesn’t work, you may need to reformat your jukebox’s disk. For information on how to do this, see “How Do I Reformat the Treó 10’s Hard Drive?” on page 38.

## **How Do I Solve Sound Problems?**

### **Why Don’t I Hear Any Sound?**

- Verify that the volume is not turned completely down.
- Check that the earphone jack is plugged in all the way.

## Why Do The Files On My Treó 10 Sound Distorted?

- Some CD-ROM drives are not best suited for audio. See the MusicMatch® Online Help guide information. You may be able to change some of the settings to improve the situation.

## Why is My Player Skipping?

Exposing your jukebox to rough handling for extended periods can cause skipping. Try not to continuously jar the player.

# How Do I Solve Problems Connecting to My PC?

## Why Can't I Connect to My PC?

- If the jukebox has powered off, power it on.
- Windows 98® sometimes fails to recognize the presence of the jukebox. To reconnect Windows to the jukebox, detach the USB cable and reattach it.
- Ensure that the AC adaptor is connected.

## Why Do I Get "Undefined USB Driver" Error Messages When I Connect to My PC?

If you try to connect to your PC before you install the Music Explorer® software, your computer may try to assign an undefined USB driver to the jukebox. To fix this, remove the undefined driver and then install the Music Explorer software. For information on installing Music Explorer, see "Installing Music Explorer" on page 3. To remove the driver:

1. Keep the jukebox connected to your computer.
2. Click the **Start** menu.

3. Click **Settings**.
4. Click **Control Panel**.
5. Double-click **System**.
6. Click the **Device Manager** tab.
7. Click the '+' sign beside the Universal Serial Bus controllers.

You should see an undefined driver in the list. Select it, and delete it.

### **I Inserted the Treó 10 Installation CD, but it Didn't Automatically Start. What Should I Do?**

To start installation manually:

1. Click **Start**.
2. Click **Run**.
3. Click **Browse** and navigate to your CD-ROM drive.
4. Double-click **setup.exe**.

# Appendix: Product Information

## Technical Specifications

Your Treó 10 conforms to the following specifications:

**Music Storage:** 10GB—Up to 150 hours of audio content, encoded at 128Kb/s (approximately 3000+ tracks)

**System:** 16-bit DSP running at 150MHz.  
Micro OS 2.0 operating system

Large, crisp display (100 x 64 pixel bitmapped LCD)

**Audio:** Music is encoded at bit rates up to 320Kb/s

Lower bit rates are supported for increased playing time

You can transfer MP3 and/or Windows Media™ files from your PC hard disk.

**Battery:** Lithium-Ion rechargeable battery, 3.7V/1100mAh. Approximately six hours of continuous operation when fully charged.

Recharges in approximately three hours.

**Dimensions:** 118mm W x 19.5mm H x 77mm D  
(0.77 in. x 4.63 in. x 3.03 in.)

**Weight:** 9.9 ounces

## Computer Specifications

You will need a Personal Computer with a Windows™ 98 Second Edition/Millennium Edition (ME)/2000 Operating System. This will allow you to use the Music Explorer and

MusicMatch® companion software to download music to your Treó™ 10 Digital Music Jukebox. You must meet the following hardware and software requirements to run the Music Explorer and MusicMatch® software:

### **Minimum System Requirements**

- Pentium class processor 233 MHZ or faster
- 64 MB RAM
- 90 MB free disk space
- CD-ROM drive
- Windows™ 98 Second Edition/ME/2000
- USB port enabled

## **CODEC Settings**

While creating new music files, set the Coder/Decoder (CODEC) settings to those supported by your Treó 10 to ensure your player can decode the files you create. This prevents skipping or unreadable files. For more information about creating music files, see “How Do I Convert Music Tracks to Digital Music Files?” on page 24. The Treó 10 supports the following CODEC settings:

### **CODEC Support**

**MP3 Decoder** (mpeg-1, audio layer-3)

Sampling Frequencies: 8, 11.025, 12, 16, 22.05, 24, 32, 44.1, or 48 kHz

Constant or Variable Bit Rates: 16, 24, 32, 40, 48, 56, 64, 80, 96, 112, 128, 160, or 320 kBPS

For everyday use, the following setting is recommended:

CD Quality - MP3 (128 kbps)

For more information, see “How Do I Convert Music Tracks to Digital Music Files?” on page 24.

## **Windows Media™ Decoder**

Sampling Frequencies: 32, 44.1, 48 kHz

Bit Rates: 64, 80, 96, 128 kbps

## **Factory-Default Treó 10 Settings**

Your Treó 10 comes with the following factory presets:

Volume: 20

Lock: Off

Eq: Flat

User Eq: 0 dB (all bands)

Backlight: Never

Play Mode: PlyAll

Power Off: 1 min

You can change these settings from the Settings menu. For more information about changing these settings, see “How Do I Adjust My Treó 10’s Settings?” on page 33.

## **Using Your Treó 10 Properly**

Your Treó 10 Digital Jukebox is an electronic device that should be handled with care. Treat it as you would a camera—do not drop it, do not leave it in an automobile either in very hot or very cold weather, and do not expose it to moisture and/or excessive vibration.

It is a good idea to keep your player in the supplied carrying case. The case provides some shock resistance and protects the display screen from being easily scratched.

Clean the player with a soft, dry, or slightly damp cloth. Do not use an abrasive pad, scouring powder and/or solvent, such as alcohol or benzene, as it may ruin the finish.



## Warnings

- To prevent a fire or shock hazard, do not expose the unit to moisture.
- To avoid electrical shock, do not open the case. If your Treó 10 needs service, contact e.Digital at <http://www.edigital-store.com>. When you get to the page, click the **Customer Support** page.
- Handle the battery carefully. Improper handling or disposal could lead to heat generation, smoke, bursting, and/or fire. For more information about how to correctly charge the battery, see “Charging the Battery” on page 2. In no event shall the seller be liable for any direct, incidental and/or consequential damages of any nature, and/or losses and/or expenses resulting from any defective product and/or the use of any product.
- Do not leave the unit where it will be subjected to extremes of light, temperature (such as inside a parked automobile), moisture, and/or vibration.
- Do not use the earphones with the unit while driving, cycling, and/or operating any motorized vehicle. This could create a traffic hazard and is illegal in many areas. It could also be dangerous to play music at a high volume while walking, especially at pedestrian crossings.
- Avoid using the earphones with the unit at a high volume for extended periods of time. If you experience ringing in your ears, reduce the volume.
- Avoid handling the unit roughly, as this may cause playback to skip. Extended periods of rough handling can permanently damage the hard drive.





## Approvals

This equipment has been tested and found to comply with the limitations for a Class B digital device, pursuant to Part 15 of the FCC rules and regulations. These limitations are designed to provide reasonable protection against harmful interference within a residential installation.

This equipment generates, uses, and can radiate radio frequency energy and, if not installed and used in accordance with the instructions, may cause harmful interference to radio communications. However, there is no guarantee that interference will not occur in a particular installation.

If this equipment does cause harmful interference to radio and/or television reception, which can be determined by turning the equipment off and on, the user is encouraged to try to correct the interference by one or more of the following measures:

- Reorient or relocate the receiving antenna.
- Increase the separation between the equipment and the receiver.
- Connect the equipment to an outlet on a circuit different from the one to which the receiver is connected.
- Consult the dealer or an experienced radio and/or television technician for assistance.

This Class B digital apparatus meets all requirements of the Canadian Interference-Causing Equipment Regulations.

Cet appareil numérique de la classe B respecte toutes les exigences du Règlement sur le matériel brouilleur du Canada.



Products with the CE Marking comply with both the EMC Directive (89/336/EEC) and the Low Voltage Directive (73/23/EEC) issued by the Commission of the European Community. Compliance with these directives implies conformity to the following European Norms (the equivalent international standards are in brackets):

- EN55022 (CISPR 22) – Electromagnetic Interference
- EN50082-1 (IEC801-2, IEC801-3, IEC801-4) – Electromagnetic Immunity
- EN60950 (IEC950) – Product Safety

### Limited Warranty

Your Treó 10 Digital Music Jukebox is covered by an e.Digital Corporation Limited Warranty. This product is warranted to be free from manufacturer defects for 180 days from the date of purchase. If the product fails or malfunctions due to a manufacturing defect during the warranty period, a replacement unit of the same make and model will be provided free of charge. This offer is valid only in North America and United States Territories including APO and FPO addresses.



**Warning:** Changes or modifications to this product not expressly approved by e.Digital will void the warranty.

### How to Obtain Warranty Service:

If you are having technical trouble with your product please see our web site ([www.edigital-store.com](http://www.edigital-store.com)) for Customer Support information or contact Customer Support directly at:

- [customersupport@edig.com](mailto:customersupport@edig.com) or
- 1-877-278-1574

All warranties are tracked through the original order number and/or serial number. Please have this information available when you call.

To return a product for repair or replacement during the warranty period, you must obtain an RMA (Return Merchandise Authorization) number from e.Digital by calling toll free 1-877-278-1574. The RMA number and the return shipping address will be provided to you by a Customer Support Representative. Please include your RMA number on the label at the time of shipping. No returns will be accepted without an RMA number.

**The following are not covered by this Limited Warranty:**

Damage from misuse, abuse, or neglect

Damage from use outside the product's usage parameters

Damage from modification or incorporation of other products

Damage from repair or replacement of warranted parts by parties other than an e.Digital authorized service provider

Damage to or loss of any programs or data

Damage resulting from an Act of God

**Important**

For Customer Support, whether during or out of the warranty period, call toll-free, 1-877-278-1574, Monday through Friday, 8:00 a.m. to Midnight Eastern Time.

All repair returns require proper packaging, preferably in the original carton.

Mark on the outside of the package the RMA number. Please include the original purchase receipt and a brief note describing the problem, with the unit. Include your telephone number, along with your return address.

Ship prepaid and insured to:  
e.Digital Customer Service  
1500 World Wide Blvd.  
Hebron, KY 41048

This warranty expresses specific contractual rights; retail purchasers may have additional statutory rights, which vary from state to state.

For on-line based information go to <http://www.edigital-store.com>. When you get to the page, click the **Customer Support** page.

# Index

## A

accessories .....	1
adaptor, AC .....	2
adjusting settings .....	33
album, explained .....	30
<i>See Also</i> subfolders	
approvals .....	49
automatic power off, setting .....	38

## B

backlight setting .....	36
battery	
changing .....	14
charge level .....	12
charging .....	2
safety .....	48
browsing music .....	31
buttons	
explained .....	10
locking, unlocking .....	34
troubleshooting .....	41

## C

cable, connecting USB .....	18
caring for jukebox .....	47
CD	
converting to files .....	24
troubleshooting installation .....	44
CE approval .....	49
changing	
battery .....	14
settings .....	33
charging battery .....	2
choosing	
automatic power off setting .....	38
backlight setting .....	36
equalizer setting .....	35
play mode .....	36
user equalizer .....	35
coder/decoder (CODEC)	
settings .....	46

compact disc. *See* CD

computer	
connecting .....	18
specifications .....	45
transferring music	
from .....	19
to .....	23
troubleshooting	
connection .....	43
USB driver .....	43
connecting	
AC adapter .....	2
computer .....	18
troubleshooting .....	43
USB	
cable .....	18
troubleshooting .....	43
connection jacks .....	11
contacting e.Digital .....	51
controlling music order .....	13
converting CDs to files .....	24
copyright information .....	ii
creating	
folders .....	19
music files .....	25
subfolders .....	20
customer support, contacting .....	51
customizing	
settings .....	33
user equalizer .....	35

## D

deleting	
files .....	24
hard drive. <i>See</i> initializing hard drive	
distorted sound files,	
troubleshooting .....	43
downloading music .....	7
<i>See Also</i> transferring music	

<b>E</b>	
e.Digital, contacting	51
equalizer	
customizing	35
selecting setting	35
erasing	
files	24
player. <i>See</i> initializing hard drive	
error	
no music files	42
undefined USB driver	43
Explorer, Music. <i>See</i> Music Explorer	

<b>F</b>	
factory default settings	47
FCC information	49
features, explained	10
files	
converting CDs to	24
deleting	24
navigating on player	29
none, troubleshooting	42
troubleshooting distorted sound	43
understanding organization	30
finding music	31
folders	
creating	19
<i>See Also</i> genres	

<b>G</b>	
genres explained	30
<i>See Also</i> folders	

<b>H</b>	
hard drive, reformatting player	
from Music Explorer	22
from player	38

<b>I</b>	
information	
computer specifications	45
copyright	ii
technical specification	45
warranty	50

initializing hard drive	
from Music Explorer	22
from player	38
installing	
Music Explorer	3
MusicMatch	6
troubleshooting CD	44

<b>J</b>	
jacks, connection	11

<b>L</b>	
listening to music	9
Lithium Ion battery. <i>See</i> battery	
locking, unlocking buttons	34

<b>M</b>	
minimum computer requirements	46
moving music. <i>See</i> transferring music	
MP3 files	
creating	25
<i>See Also</i> music	
music	
creating files	25
listening to	9
navigating	29
order	13
transferring	7
computer to player	19
player to computer	23
preparation	17
troubleshooting	
distorted sound	43
no files	42
skipping	43
understanding file system	30
Music Explorer	
installing	3
using	19
MusicMatch	
installing	6
optimal CODEC settings	46
using	24

## N

- navigating music ..... 29
- no music files, troubleshooting ..... 42
- no sound, troubleshooting ..... 42

## O

- order, music ..... 13, 36
  - troubleshooting ..... 41
- organizing music files ..... 19

## P

- play order
  - selecting ..... 36
  - troubleshooting ..... 41
- player state ..... 13
- playing music ..... 9
- ports. *See* jacks
- power
  - setting automatic off ..... 38
  - troubleshooting unexpected off ..... 41
  - turning on, off ..... 8
- preparing music transfer ..... 17
- problems. *See* troubleshooting
- proper jukebox care ..... 47

## R

- recording. *See* transferring music
- reformatting hard drive
  - from Music Explorer ..... 22
  - from player ..... 38
- removing battery ..... 14
- renaming folders, tracks ..... 23
- requirements, computer ..... 46
- ripping. *See* creating music files

## S

- safety ..... 48
- screen
  - explained ..... 11
  - scrambled, troubleshooting ..... 42
- selecting
  - equalizer setting ..... 35
  - play mode ..... 36

*See also* settings
- setting up. *See* installing, settings

## settings

- adjusting ..... 33
- automatic power off ..... 38
- backlight ..... 36
- CODEC ..... 46
- equalizer ..... 35
- factory-default ..... 47
- play mode ..... 36
- user equalizer ..... 35

## software

- installing ..... 3
- troubleshooting installation ..... 44

## sound

- controlling ..... 10
- troubleshooting
  - files distorted ..... 43
  - none ..... 42

## specifications

- computer ..... 45
- technical ..... 45

status, track ..... 14

storage media, initializing ..... 22

## subfolders

- creating ..... 20
- See also* albums

system, music file ..... 30

## T

- technical specifications ..... 45
- track, explained ..... 30
- trademark information ..... ii
- transferring music ..... 7
  - computer to player ..... 19
  - player to computer ..... 23
  - preparation ..... 17
- troubleshooting
  - buttons ..... 41
  - computer connection ..... 43
  - installation cd ..... 44
  - jukebox ..... 41
  - music skipping ..... 43
  - no music files ..... 42
  - no sound ..... 42
  - play order ..... 41
  - screen scrambled ..... 42
  - sound files distorted ..... 43
  - undefined USB driver ..... 43
  - unexpected power off ..... 41

turning power on, off ..... 8  
troubleshooting .....41

**U**

undefined USB driver,  
troubleshooting ..... 43  
understanding  
features .....10  
file structure .....30  
screen .....11

**USB**

connecting cable .....18  
undefined driver .....43

user equalizer, customizing .....35  
using Music Explorer .....19

**V**

volume .....10

**W**

warnings .....48  
warranty .....50  
Windows Media™ (WMA) files,  
creating .....25