

mellerware®

TRENDS FOR LIFE

Apollo Stainless Steel Blender



complies with
INTERNATIONAL
IEC60335
SAFETY SPECIFICATIONS

m
500 W

CE
2 YEAR
GUARANTEE

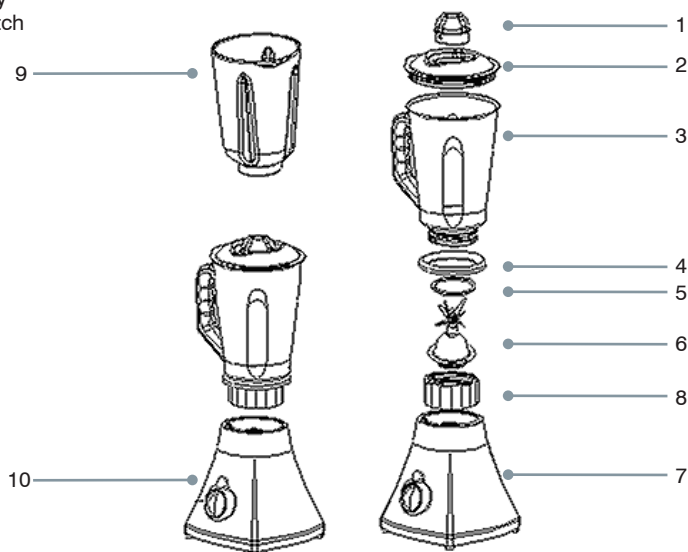
Model:
62000/
62007

PLEASE READ ALL INSTRUCTIONS BEFORE USE

2 year guarantee

Parts & Contents

- 1) Measuring Cap
- 2) Lid
- 3) Jar
- 4) Ring
- 5) Sealing ring
- 6) Cutting blade
- 7) Cup base
- 8) Motor Base
- 9) Jar Assembly
- 10) Rotary switch



Important Safeguards

When using electrical appliances, basic safety precautions should always be followed, including the following:

1. Read all instructions before operating.
2. Do not touch hot surfaces. Use handles or knobs.
3. To protect against electrical shock, do not immerse cord, plug or appliance itself in water or other liquids.
4. Ensure the appliance is situated out of reach of children. Never allow a child to use this appliance.
5. Unplug from mains supply outlet when not in use and before cleaning.
6. Do not operate any appliance with a damaged cord or plug or after the appliance malfunctions or has been damaged in any manner. Return the appliance to the nearest authorized service facility for examination, repair or adjustment.
7. The use of accessory attachments not recommended by the appliance manufacturer may cause injuries.
8. Do not use outdoors.
9. Do not let cord hang over edge of table or counter or touch hot surfaces.
10. Do not place on or near a hot gas or electric burner, or in a heated oven.
11. Always ensure the appliance is switched off before plugging into mains supply outlet. To disconnect, turn any control to OFF position, then remove plug from wall outlet.

Before first use

All parts of the blender are to be thoroughly cleaned before being used for the first time.

Assembling the Jar:

1. Put the rubber sealing ring (5) on the inner edge of the blade unit (6).
2. Put the blade unit with sealing ring into the cup base (7).
3. Inset the ring (4) on the bottom of jar first, then Insert the assembled cup base onto the bottom of the jar (3) and turn clockwise to secure tightly in place.
4. Mount the Measure Cup (1) onto the Lid (2).
5. Secure the Lid onto Jar and press into place.

Inserting the Jar:

1. Make sure that the blender is switched off (Switch in the '0' setting).
2. Place the jar assembly (9) on to the motor base (8) and press down until securely engaged.

Instructions for Use

1. Place the foodstuff you wish to process into the jar.
2. Place the lid on the jar and close securely. Place the measuring cap into the hole in the lid and turn clockwise to lock.
3. Place your hand on the lid and apply firm pressure before switching the unit ON. The appliance is fitted with a safety switch and requires sufficient downward pressure to operate.
4. Switch on the motor base to desired setting:

Speed setting	Use
1	for light usage with liquids
2	for more solid consistency – for mixing liquids and solid foodstuffs
0	stop operation
P	for ice crushing & short, powerful impulse movements

(The switch does not permanently engage in the 'PULSE' setting. You have to hold the switch in the 'PULSE' setting or turn it repeatedly into the 'P' setting)

WARNING: NEVER LEAVE THE APPLIANCE ALONE WHILE IN OPERATION.

After using the blender, always move the switch into the '0' setting and pull out the mains plug. To remove the glass jar simply lift it off the motor base. You do not have to rotate the glass jar to

remove it.

Useful tips:

- To achieve the best results when pureeing solid ingredients, place small portions into the glass jar one by one instead of placing a large quantity all at once.
- If you are processing solid ingredients, cut them into small pieces (2-3cm) first.
- When mixing solid ingredients start off first with a small amount of liquid. Gradually add more and more liquid through the opening in the lid.
- Always place your hand on top of the blender when you are operating the device.
- For stirring solid or very thick liquid ingredients we recommend that you use the blender in impulse mode to prevent the blades from becoming stuck.

Motor Base:

Never immerse the motor base in water. Wipe it only with a damp cloth.

Simple cleaning/ rinsing out the assembled glass jar:

Empty the glass jar and fill it with water. Place the glass jar on the motor base and turn the switch several times into the 'P' setting. Empty the glass jar and rinse until clean.

WARNING: THE JAR OR ANY PART OF THE JAR ASSEMBLY IS NOT BE CLEANED USING A DISH WASHER. USE OF A DISH WASHER MAY RESULT AND DAMAGE AND THE WARRANTY WILL BE VOID.

**SAVE THESE INSTRUCTIONS
THIS PRODUCT IS FOR HOUSEHOLD USE ONLY!**

Warranty

We guarantee that this product has been thoroughly inspected and tested before dispatched and is free from mechanical and electrical defects. Should defects due to faulty material or workmanship develop within one year from date of purchase, under normal domestic use, the appliance will be repaired free of charge. Note: If this product is used commercially the guarantee is limited to 90 days. Kindly retain your purchase slip for this must be presented if making a claim under the terms of the guarantee. If such proof is not available the product shall be deemed to be older than one year and a charge for service and \ or spares will

be applicable. Should your appliance require attention or appear not to be operating properly, please take it to the retailer from whom it was purchased, together with all parts and your purchase slip.

This guarantee does not cover wear and tear or damaged cause by over-loading negligence, accidental or improper use. Any changes will invalidate the guarantee, as would any attempted repair.

SERVICE

Before returning your product for service or repair – check the following:

- Your household mains supply socket is working properly.
- The mains supply circuit is not overloaded.
- The instructions for use have been followed carefully.

If service becomes necessary within the guarantee period the appliance should be returned to the retail outlet where purchased or carefully packed and marked "fragile-handle with care" and sent carriage paid to the address below. (Postage is not refundable) Service outside the guarantee period is still available but this will be chargeable.

creative housewares

27 Nourse Avenue Epping 2 Cape Town
P.O. Box 975 Eppindust 7475 South Africa
Tel: +27 21 534 8114 Fax: +27 21 534 8086
Service Centre Share Call: 086 111 5006
web: www.creativehousewares.co.za