



Docking Entertainment System

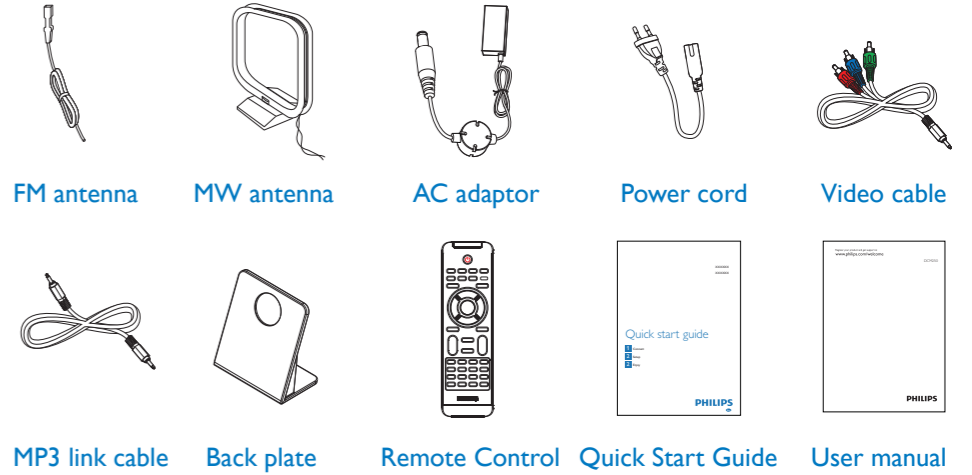
DCM250



# Quick start guide

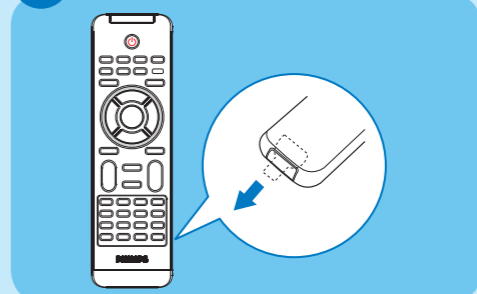
- 1** Connect
- 2** Setup
- 3** Enjoy

# What's in the box



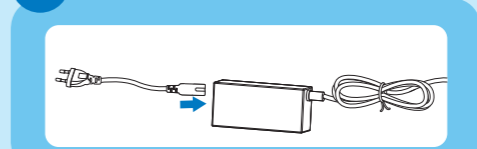
## 1 Connect

**A** Remove the protective tab



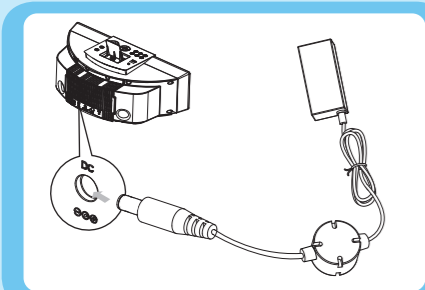
**1** Remove the protective tab to activate the remote control battery.

**B** Connect power

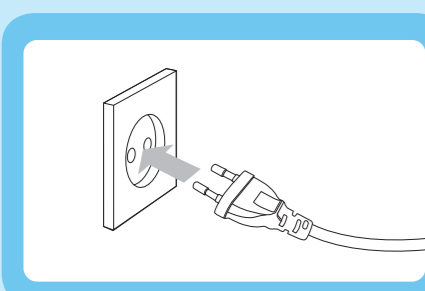


**1** Connect the power cord to the AC adaptor.

# 1 Connect



- 2 Connect one end to the DC socket on the main unit.



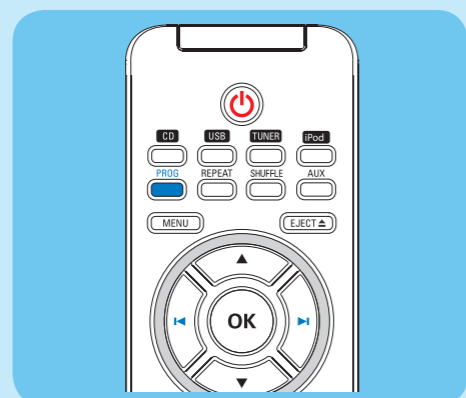
- 3 Connect the other end to the wall socket.

- \* Tip
- See the User Manual for how to connect other equipment to this system.

# 2 Setup

## A Set the clock

- 1 In standby mode, press **PROG** to activate the clock setting mode.
  - ↳ The 12 hour or 24 hour format is displayed.
- 2 Press **◀/▶** to select 12 hour or 24 hour format.
- 3 Press **PROG**.
  - ↳ The hour digits are displayed and begin to blink.
- 4 Press **◀/▶** to set the hour.
- 5 Press **PROG**.
  - ↳ The minute digits are displayed and begin to blink.



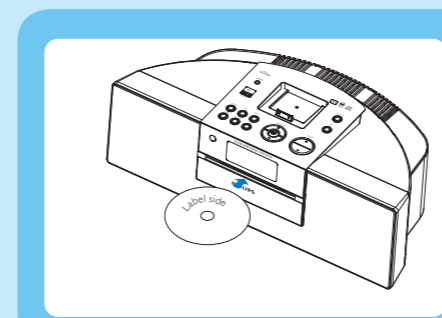
# 2 Setup

- 6 Press **◀/▶** to set the minute.
- 7 Press **PROG** to confirm.

# 3 Enjoy

## A Play disc

- 1 Press **CD** to select the disc source.
- 2 Insert a disc into the disc compartment with the printed side facing up.
- 3 Press **▶||** to start play.
  - To stop play, press **■**.

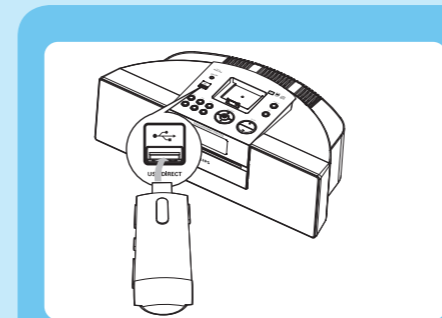


## B Play from USB

### Note

- Ensure that the USB device contains playable audio content.

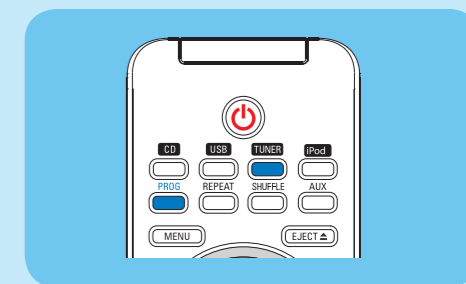
- 1 Connect the USB device into the **↔** socket.
- 2 Press **USB** to select the USB source.
  - ↳ The total number of tracks is displayed.
- 3 Press **▲▼** to select a folder.
- 4 Press **◀/▶** to select a file.
- 5 Press **▶||** to start play.



# 3 Enjoy

## C Program and tune to radio stations

- 1 Press **TUNER** to select the tuner source.
- 2 Press and hold **PROG** for 2 seconds to activate automatic program mode.
  - ↳ [AUTO] (auto) is displayed.
  - ↳ All available stations are programmed in the order of waveband reception strength.
- 3 Press **◀/▶** to select a preset number.



## D Play iPod/iPhone

- 1 Install the supplied back plate, and load the iPod/iPhone in the dock.
- 2 Press **iPod** to select iPod/iPhone source.
  - ↳ The connected iPod/iPhone plays automatically.
  - To pause/resume play, press **▶||**.
  - To skip to a track, press **◀/▶**.
  - To search during play: press and hold **◀/▶**, then release to resume normal play.
  - To navigate the menu: press **MENU**, and press **▲▼◀/▶** to select, then press **OK** to confirm.

- \* Tip
- Detailed features and additional functions are described in the user manual.

